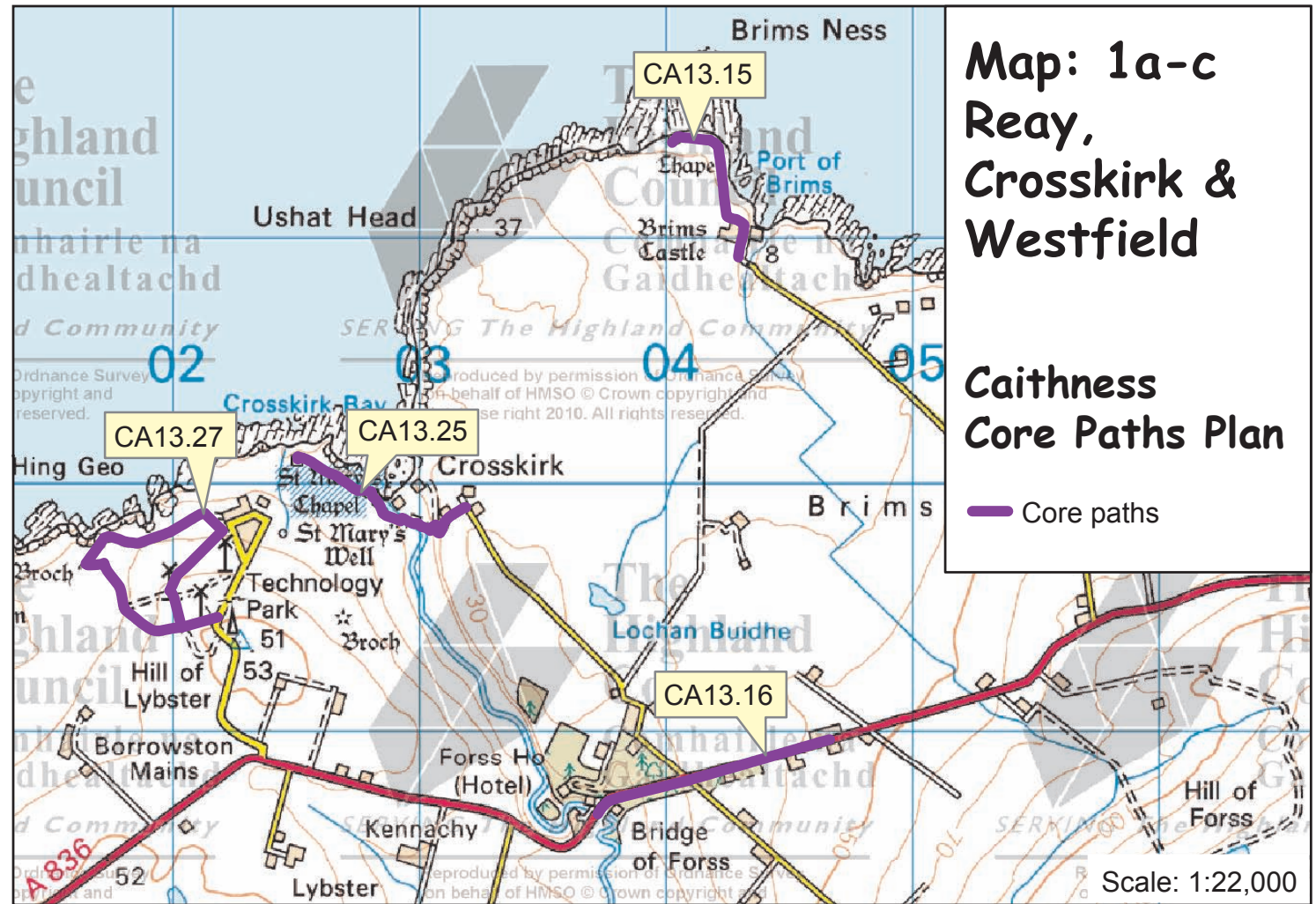
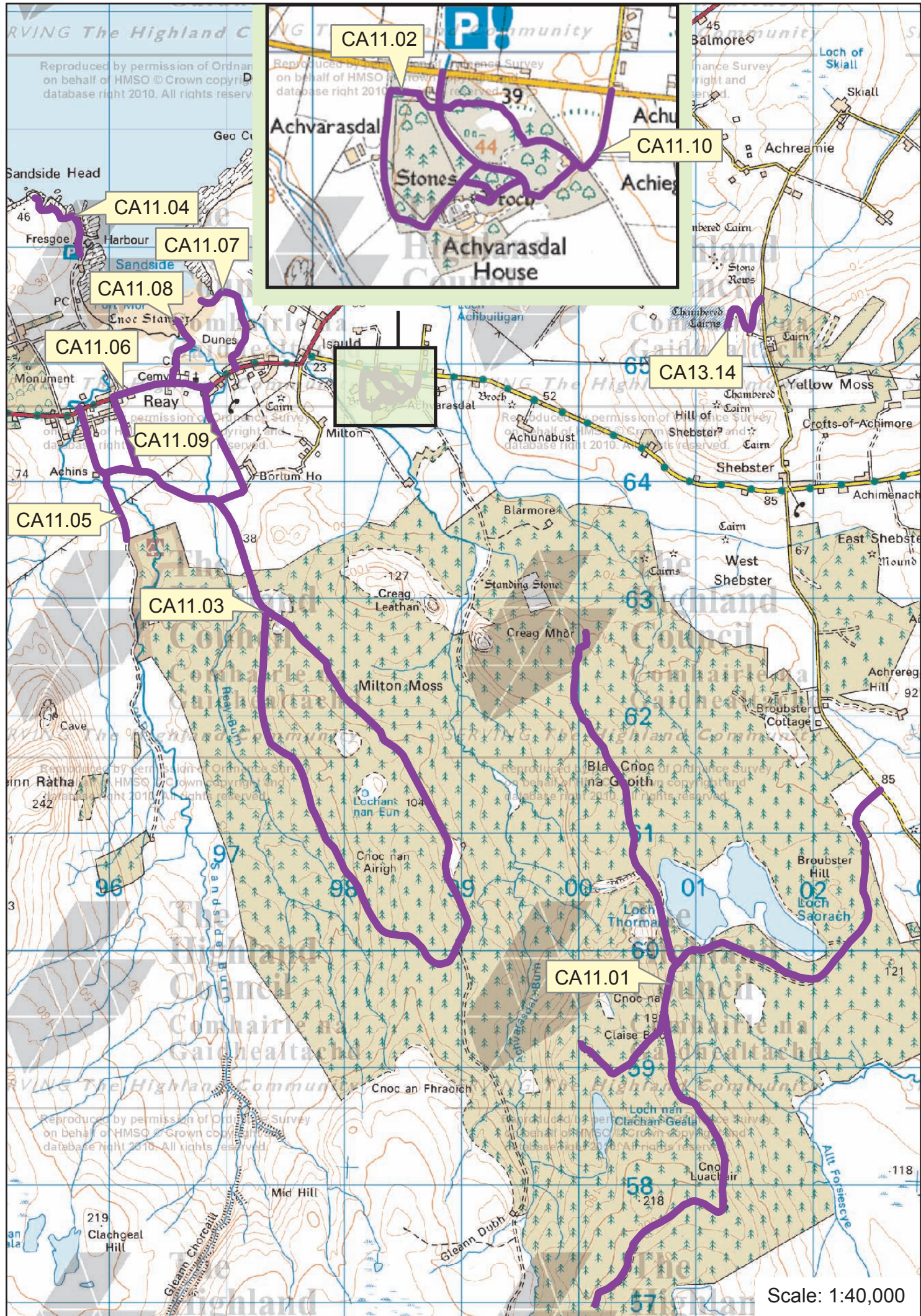


Map: 1a-c Reay, Crosskirk & Westfield

Caithness Core Paths Plan

Path No.	Path Name/Route	Path Type	Length (kms)
CA09.01	Westfield to Achnavast	track	1.8
CA09.02	Achscrabster quarries	track, stone surface, sections grassed over	2.3
CA11.01	Broubster Forest	track	11.3
CA11.02	Achvarasdal Woodland	path (gravel)/roadway (tar)	1.7
CA11.03	Borlum Rock	track	8.4
CA11.04	Sandside Head	track, earth/grass path	0.8
CA11.05	Achins/Helshetter	track	1.5
CA11.06	Reay Roadside Link	roadside footway (tar)	0.8
CA11.07	Reay Golf Course via Mary's Cottage	tarred road, earth/grass path	1.0
CA11.08	Reay Golf Course via Clubhouse	path (gravel/earth/grass)	0.7
CA11.09	Limekiln circuit	track	2.7
CA11.10	Achvarasdal East Drive	track	0.2
CA13.14	Cnoc Freiceadain Cairns	path (earth/grass)	0.7
CA13.15	Brims Ness	track/path (earth/grass)	0.7
CA13.16	Forss Roadside	roadside footway (tar)	1.0
CA13.25	St Mary's Chapel	path (earth/grass)	0.9
CA13.27	Forss Wind Farm	track/path (earth/grass)	1.9



**Map: 1a-c
Reay,
Crosskirk &
Westfield**

**Caithness
Core Paths Plan**

— Core paths

