

HOUSE COMPLETIONS IN HIGHLAND

April 2010 to September 2010

November 2010

SUMMARY

- Between June 2010 and September 2010, 415 new houses were completed in the Highland Council area, continuing the growth from the previous quarter (402);
- This is an increase compared to the same period in 2009 (305);
- Over 110 affordable homes were completed in the last quarter

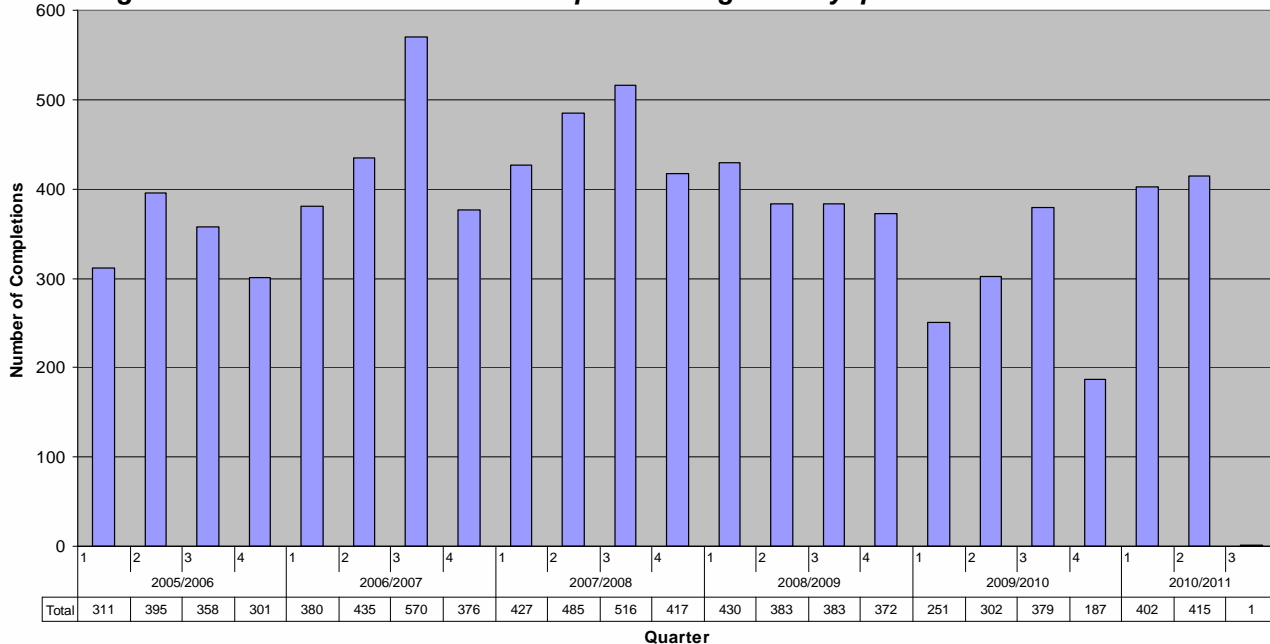
HOUSE COMPLETIONS

Between June 2010 and September 2010, 415 new houses were completed in the Highland Council area. This is an improvement on the same periods for both 2009/10 (302 new homes) and 2008/09 (383 new homes).

This recent upsurge means that progress is still being made towards the Council Programme's target of 6,000 house completions by 2011. Almost 5400 houses of this overall total have now been completed since 2007/08. The Council is working with partners to ensure that as far as possible completion rates are maintained.

The two key drivers in the current level of completions have been the number of affordable housing completions (over 110 new homes) such as Bridgermill, Nairn; Bunoich, Fort Augustus; Nethy Bridge; North Kessock and Wick. The second key driver has been the number of single house plot completions (over 120 new homes).

Figure 1: Number of new houses completed in Highland by quarter 2005 – 2010/11



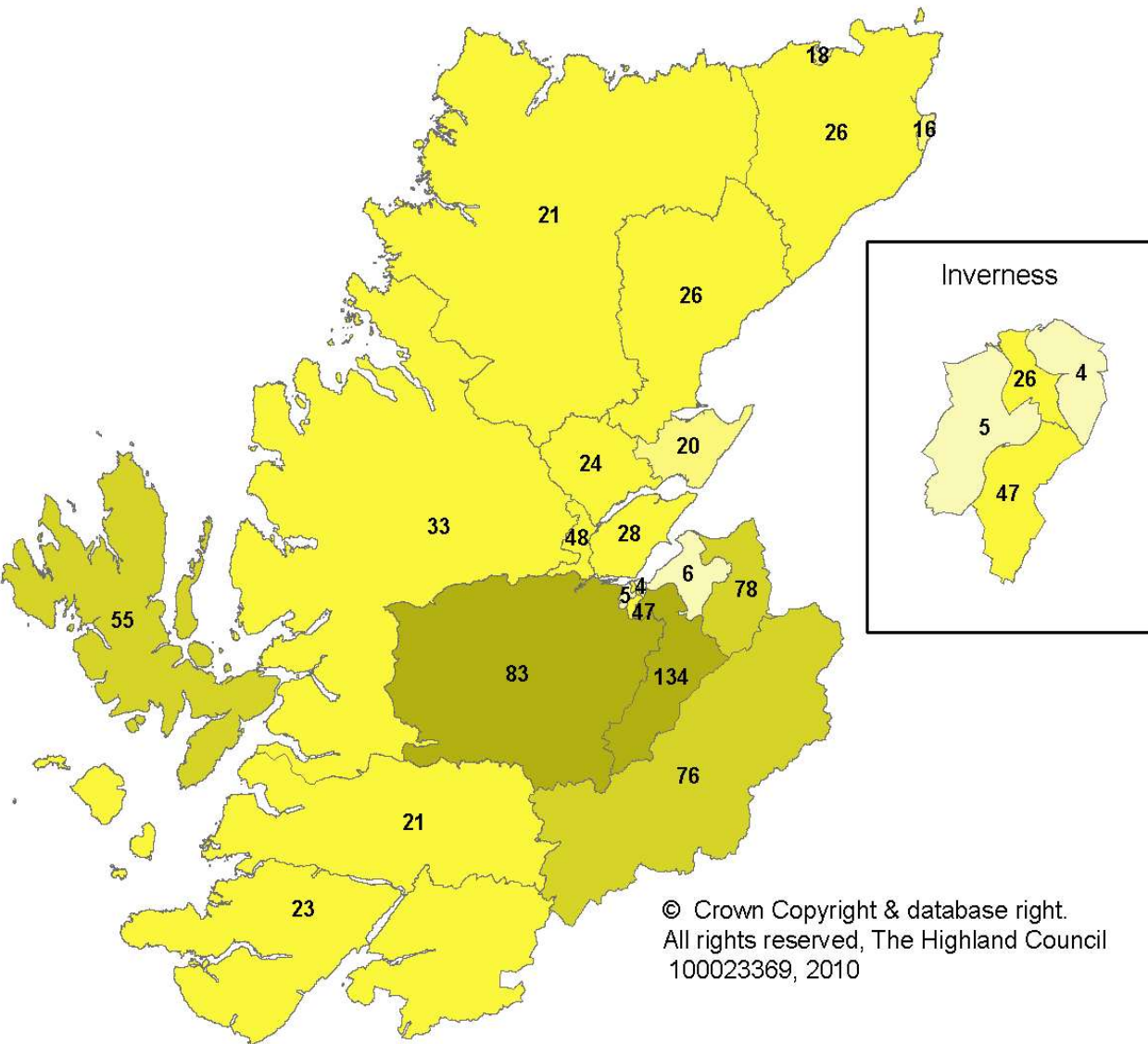
A detailed analysis by Council Ward can be seen overleaf in Figure 3. The key wards where development rates have been high were in Inverness South; Badenoch and Strathspey; Nairn; Aird and Loch Ness; Dingwall and Seaforth.

The figures are based on Building Standards completion certificates issued by the Council.

WARD FOCUS

Figure 2, left, shows a map of completions by ward for 2010 / 2011 for the first two quarters

Figure 3 below shows housing completions for 2004 to 30/09/2010



© Crown Copyright & database right.
All rights reserved, The Highland Council
100023369, 2010

Ward	Ward Name	2004/2005	2005/2006	2006/2007	2007/2008	2008/2009	2009/2010	2010/2011	Ward Total
1	North, West and Central Sutherland	23	19	48	20	41	20	21	192
2	Thurso	33	30	26	54	50	11	18	222
3	Wick	29	15	44	38	23	7	16	172
4	Landward Caithness	44	61	70	71	73	71	26	416
5	East Sutherland and Edderton	22	36	29	27	64	52	26	256
6	Wester Ross, Strathpeffer and Lochalsh	52	59	74	61	93	83	33	455
7	Cromarty Firth	50	48	79	69	80	67	24	417
8	Tain and Easter Ross	9	31	41	44	55	66	20	266
9	Dingwall and Seaforth	84	36	36	84	118	54	48	460
10	Black Isle	87	63	27	27	45	20	28	297
11	Eilean a' Cheò	90	71	96	114	146	109	55	681
12	Caol and Mallaig	48	35	31	60	48	40	21	283
13	Aird and Loch Ness	46	103	89	153	137	73	83	684
14	Inverness West	127	26	34	52	25	3	5	272
15	Inverness Central	23	44	87	150	50	21	26	401
16	Inverness Ness-Side	88	90	96	95	6	22	47	444
17	Inverness Millburn	3	41	2	1	3	16	4	70
18	Culloden and Ardersier	25	36	68	68	52	11	6	266
19	Nairn	105	100	67	60	53	53	78	516
20	Inverness South	179	251	482	406	286	208	134	1946
21	Badenoch and Strathspey	124	134	177	151	72	67	76	801
22	Fort William and Ardnamurchan	33	36	58	40	48	45	23	283
Highland		1324	1365	1761	1845	1568	1119	818	9800

Note 2010/2011 Figures are Quarter 1 & 2 (April to September) only