

HOUSE COMPLETIONS IN HIGHLAND

April 2010 to June 2010

July 2010

SUMMARY

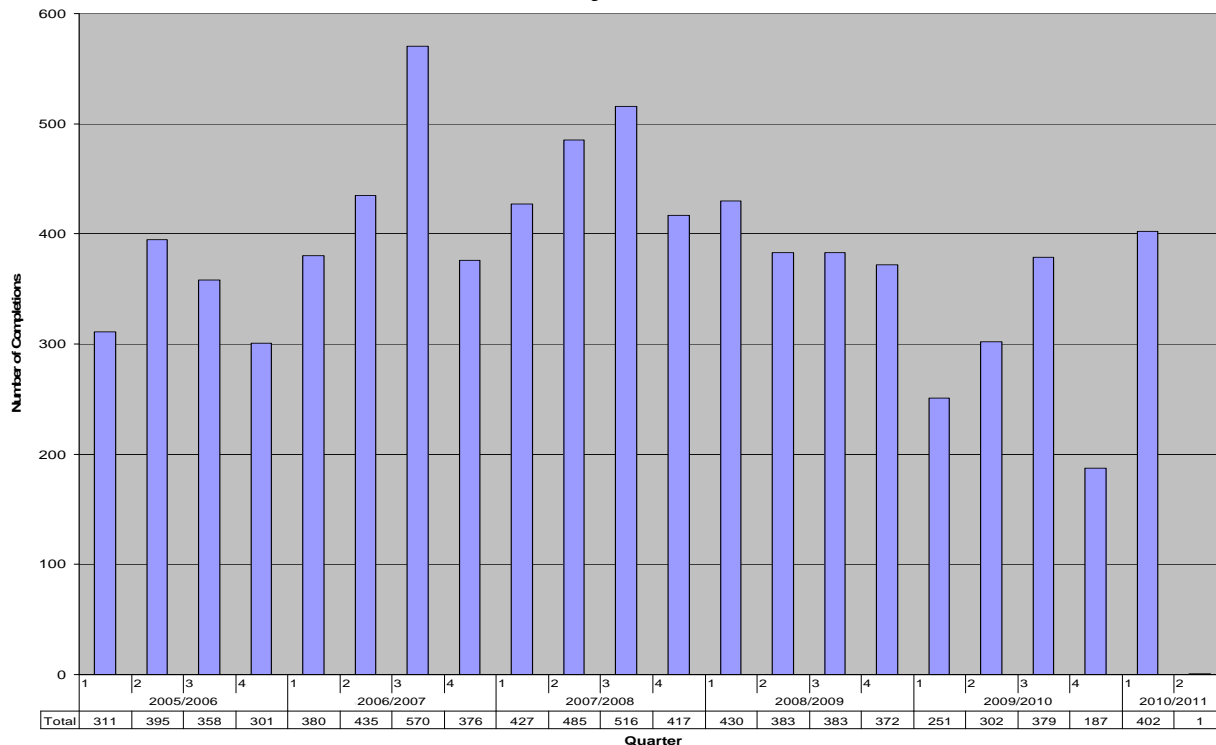
- Between April 2010 and June 2010, 402 new houses were completed in the Highland Council area;
- This is a significant increase of 215% on the previous quarter, with over 100 affordable homes completed.

HOUSE COMPLETIONS

The economic slowdown affected the house completions in 2009 and the severe weather in the early part of 2010 may also have slowed completions considerably. However, there has been a recent upsurge in the number of completions meaning that progress is still being made towards the Council Programme's target of 6,000 house completions by 2011. Almost 5300 houses of this overall total have now been completed since 2007/08. The Council is working with partners to ensure that as far as possible completion rates are maintained.

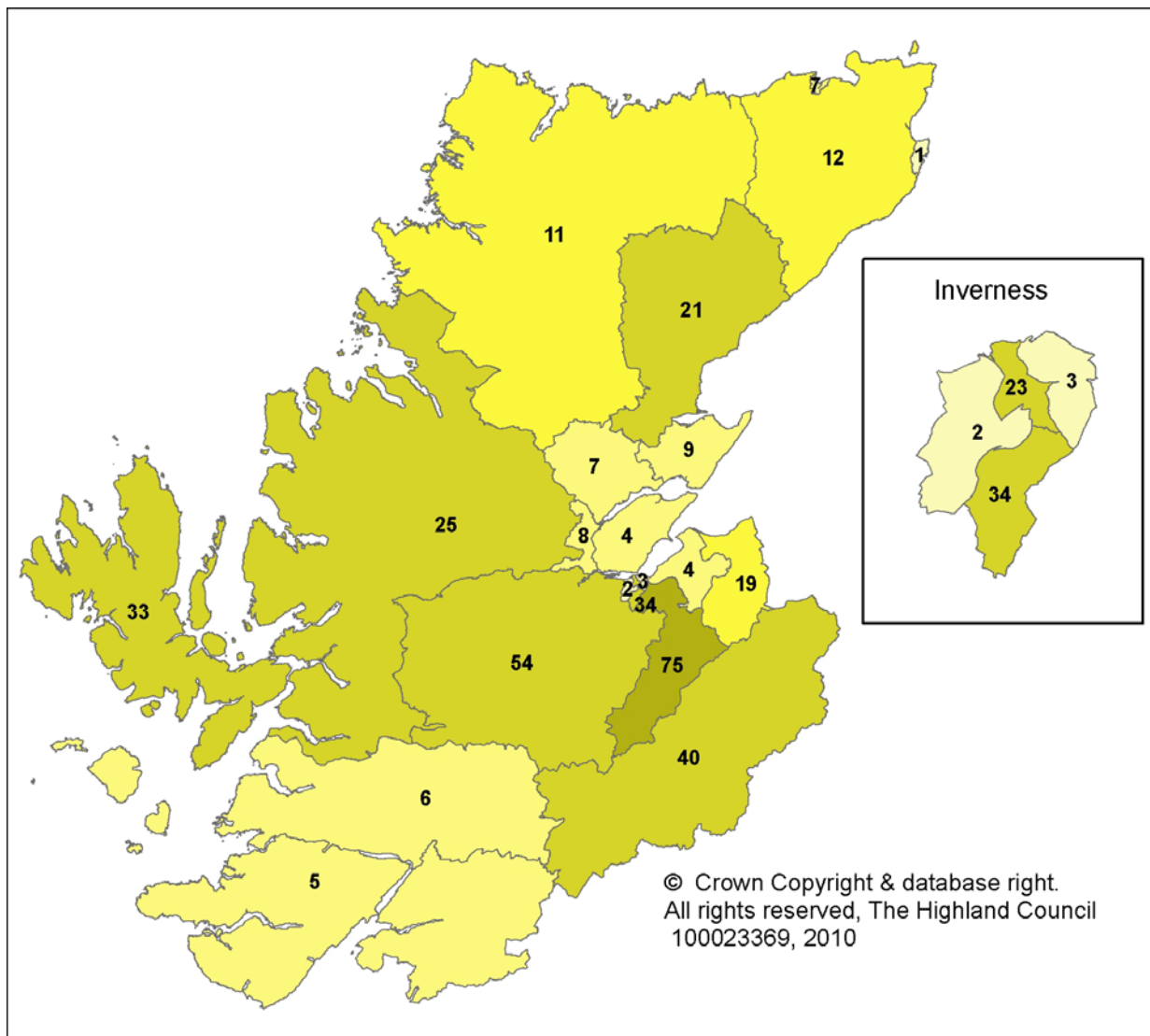
Between April 2010 and June 2010, 402 new houses were completed in the Highland Council area – bringing the figure close to that achieved in 2008/09 figure Q1 (430 new homes) and 2007/08 (427 new homes). One of the key drivers in the current level of completions have been an important number of affordable housing schemes.

Figure 1



A detailed analysis by Council Ward can be seen overleaf in Figure 3. The key wards where development rates have been high were in Inverness South; Eilean a' Cheo` ; Wester Ross, Strathpeffer and Lochalsh; Aird and Loch Ness; Badenoch and Strathspey; Inverness Central; Inverness Ness-side.

The figures are based on Building Standards completion certificates issued by the Council.



WARD FOCUS

Figure 2, left, shows a map of completions by ward for 2010 / 2011 Q1

Figure 3 below shows housing completions for 2004 to 30/06/2010

Ward	Ward Name	2004/2005	2005/2006	2006/2007	2007/2008	2008/2009	2009/2010	2010/2011	Ward Total
1	North, West and Central Sutherland	23	19	48	20	41	20	11	182
2	Thurso	33	30	26	54	50	11	7	211
3	Wick	29	15	44	38	23	7	1	157
4	Landward Caithness	44	61	70	71	73	71	12	402
5	East Sutherland and Edderton	22	36	29	27	64	52	21	251
6	Wester Ross, Strathpeffer and Lochalsh	52	59	74	61	93	83	25	447
7	Cromarty Firth	50	48	79	69	80	67	7	400
8	Tain and Easter Ross	9	31	41	44	55	66	9	255
9	Dingwall and Seaforth	84	36	36	84	118	54	8	420
10	Black Isle	87	63	27	27	45	20	4	273
11	Eilean a' Cheò	90	71	96	114	146	109	33	659
12	Caol and Mallaig	48	35	31	60	48	40	6	268
13	Aird and Loch Ness	46	103	89	153	137	73	54	655
14	Inverness West	127	26	34	52	25	3	2	269
15	Inverness Central	23	44	87	150	50	21	23	398
16	Inverness Ness-Side	88	90	96	95	6	22	34	431
17	Inverness Millburn	3	41	2	1	3	16	3	69
18	Culloden and Ardersier	25	36	68	68	52	11	4	264
19	Nairn	105	100	67	60	53	53	19	457
20	Inverness South	179	251	482	406	286	208	75	1887
21	Badenoch and Strathspey	124	134	177	151	72	67	40	765
22	Fort William and Ardnamurchan	33	36	58	40	48	45	5	265
Highland		1324	1365	1761	1845	1568	1119	403	9385

Note 2010/2011 Figures are Quarter 1 (April to June) only