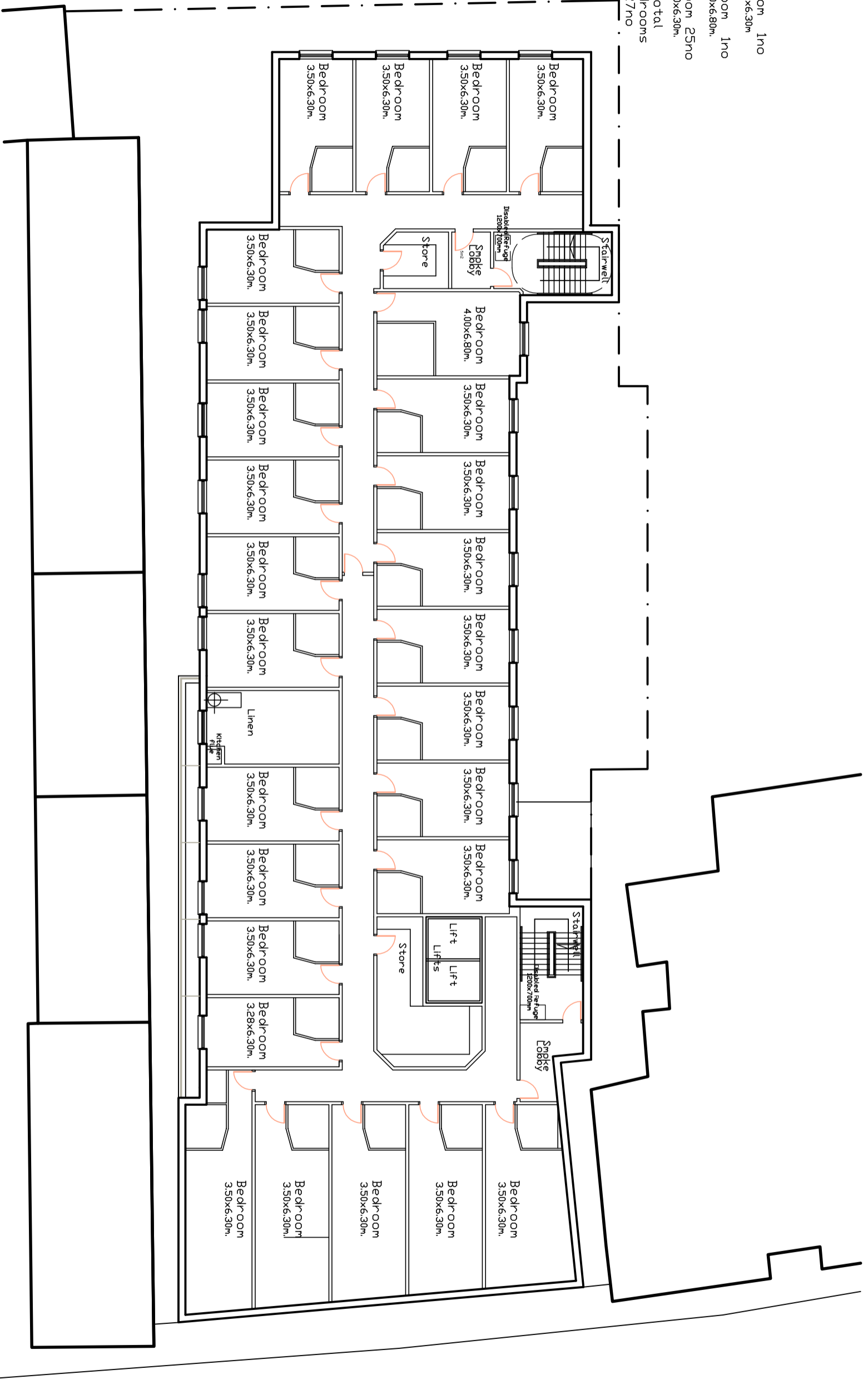


Bedroom 1no  
 3.28x6.30m  
 Bedroom 1no  
 4.00x6.80m  
 Bedroom 25no  
 3.50x6.30m  
 Total  
 Bedrooms  
 27no



FIRST FLOOR LAYOUT. 1.200



PLANNING PROPOSALS,  
 PROPOSED HOTEL, HUNTLY STREET, INVERNESS.

albert house  
 6, cast. hill  
 inverness  
 tel: 01224 365500  
 fax: 01224 353903  
 www.cummingandco.com



**cumming and co**

CLIENT Ardmuir Properties

PROJECT 19-21 Huntly Street, Inverness

CONTENT First Floor Layout Plan

SCALE 1.200 DATE January 2009

JOB REFERENCE 07-124 DRAWING REV

07-124

PL-03

A