



SUTHERLAND CENTRAL WARD PROFILE

Sutherland Local Plan

SUTHERLAND LOCAL PLAN - PROPOSED TIMETABLE

Task	Target Date
Project Plan approved by Area Committee Awareness Raising	3 Oct 2005 Up to mid Dec 2005
<ul style="list-style-type: none"> ■ Circulation of Background Papers on Housing, Business/Economic Development and Environmental Issues ■ Circulation of Ward Profiles ■ Local Plan specific informal consultations and/or meetings (as appropriate) with Community Councils, Community Planning Partnership, various agencies, grazing committees, interested landowners, developers, Members and other Council Services 	10 Nov 2005 → Sept to mid Dec 2005
<ul style="list-style-type: none"> ■ Newsletter and Webpage 	11 Nov 2005 (with regular updates) by 16 Dec 2005
<ul style="list-style-type: none"> ■ Feedback 	Ongoing to Mar 2006
Survey Work , including Housing Land Audit, business/ industry land, site visits and Landscape Capacity Study	11 Nov 2005
Publish Intention to Prepare Advert	Dec 2005 – end Mar 2006
Prepare Site Options	
Informal Consultation on Site Options and Settlement Development Areas	
<ul style="list-style-type: none"> ■ Full household circulation ■ Public exhibitions (at least one in each Community Council area) ■ Technical Workshops with invited participants (at least one in each Community Council area) 	Apr & May 2006
Preparation of formal Deposit Draft	June – Sept 2006
Area Committee to Approve Deposit Draft for publication	Oct 2006
Publish Deposit Draft and formal consultation, including neighbour notification on site options.	Oct 2006
Public Local Inquiry for Unresolved Objections	Apr 2007
Adoption	Nov 2007

For further information, please contact:
 Planning & Development Service, The Highland Council,
 Glenurquhart Road, Inverness, IV3 5NX
 telephone: (01463) 702 262, 702 276 or 702 271
 email: sutherlandlp@highland.gov.uk
 www.highland.gov.uk/plintra/devplans/suth/suth.htm

SUTHERLAND LOCAL PLAN

The Highland Council is now preparing a new Local Plan for the whole of Sutherland. This will replace the following four existing plans:

- Golspie & Lairg (Lairg and Rogart areas)
- North West Sutherland
- Tongue and Farr
- South and East Sutherland

The purpose of the Local Plan is to guide the future development of the area. It covers all land use issues, including housing, business and industry, retailing, infrastructure, recreation and environmental protection. It looks at these issues together to make sure that the wider picture can be seen and guide change in the interest of the whole community.

WHY WE NEED YOUR INVOLVEMENT NOW

As local residents, you know your area better than anyone else and that is why it is important that you are involved in planning for its future. We are right at the beginning of the plan preparation process and we hope that this is just the beginning of your involvement.

To get you started thinking about the issues now, we have put together some of the key facts and figures that are currently available about Sutherland Central Ward (see map overleaf). These cover issues like population, employment and transport and start to paint a picture of Central Sutherland area and the people who live there. Whilst we, as planners, can begin to pick some key issues from these figures, they don't tell us what is really important to the people who live in the area. You - the community - are the only people who know what is important to you and what would improve your community.

YOUR COMMENTS

If you would like to comment at this first stage in the Plan process, please do so by **16th December 2005**. You can use the Feedback Form provided or email comments to the address on the back page. There will be further opportunities to be involved in the Plan's preparation. Please see the proposed timetable on the back page for further information in this regard.



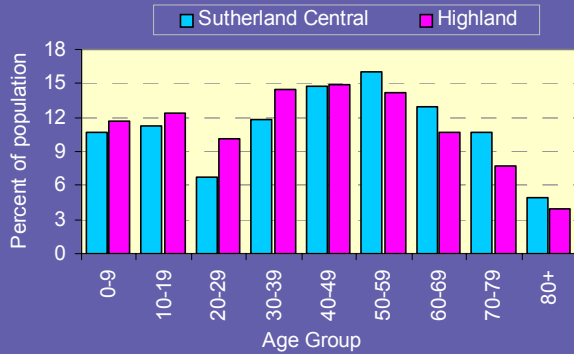
Sutherland Central: Ward Profile*

Source: 2001 Census, The Highland Council and Nomis.

Population

- Central Sutherland has a population of 2435 (48.6% male and 51.4% female).
- Since 1991, the number of people living in the Ward has not changed.

Figure 1: Population by age group



- 22.2% of the Ward population is aged 65 or above, compared with 16.7% in Highland.
- 21.9% of the population is aged 0 to 19 in the Ward, compared with 24.0% in Highland.
- Central Sutherland has a higher percentage of all-pensioner households (31.4%) than Highland (24.0%).
- 3.9% of people in the Ward can speak, read or write Gaelic.

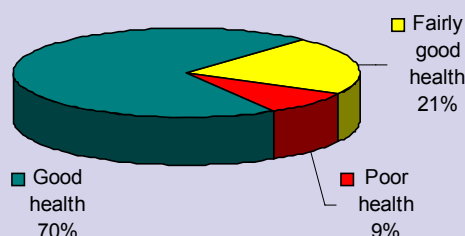
Environment

- Sites of Special Scientific Interest cover 12.0% of the land area.
- 3.9% of the land area is covered by National Scenic Areas.
- There are 51 listed buildings in the area.

Health

- 69.6% of the Central Sutherland population described their general health as being good.
- 20.1% of the Ward population has a limiting long-term illness, compared with 18.4% in Highland.
- 9.3% of people provide unpaid care to others (due to physical or mental ill health, disability or old age).

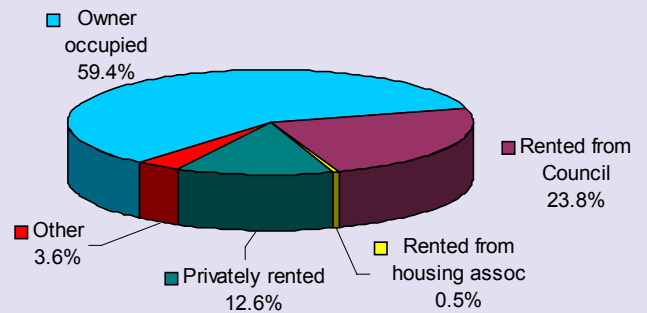
Figure 3: General health of Central Sutherland residents



Housing

- There are 1117 households in Central Sutherland, compared with 1000 in 1991.
- In the 10 years between 1995 and 2004, there were 82 new houses built in the Ward, an average of 8 per year.
- The percentage of people who own their own homes in the Ward (59.4%) is lower than that in Highland (65.7%).
- 11.2% of all housing stock in the Ward is used as second or holiday homes, compared with 6.2% in Highland.
- 4.7% of the housing stock is empty.
- 0.7% of households live in temporary accommodation (caravans and so on).
- There are 69 people in the Ward on the Council's waiting list for housing.

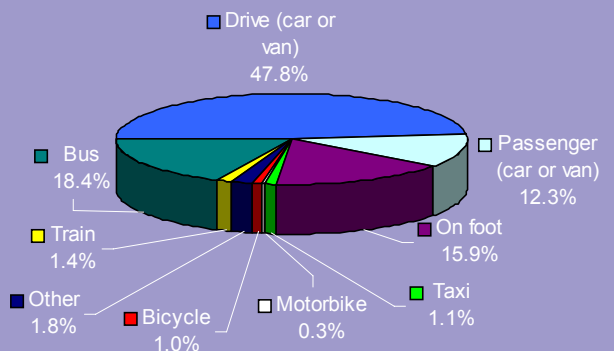
Figure 4: Housing in Central Sutherland



Transport

- 80.4% of households in Central Sutherland have access to one or more cars.
- The number of people who own cars is higher than in Highland (74.9%).
- There are 312 kilometres of roads in the Ward of which 47% are A roads.

Figure 5: Travel to work or study in Central Sutherland

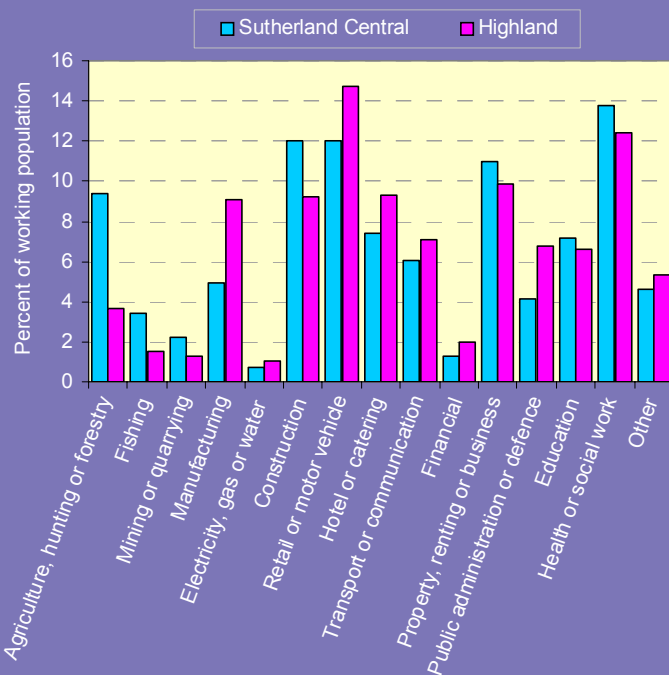


* Note that some percentages are based on small sample sizes.

Employment

- 7.4% of the Central Sutherland working population is employed in the hotels and catering sector, compared with 9.3% in Highland.
- 61.3% of 16 to 74 year olds in the Ward are economically active. In Highland, 68.1% are economically active.
- 15.0% of 16 to 74 year olds in the Ward are self-employed (10.2% in Highland).
- 17.3% of people in the Ward work from home, compared with 9.8% in Highland.

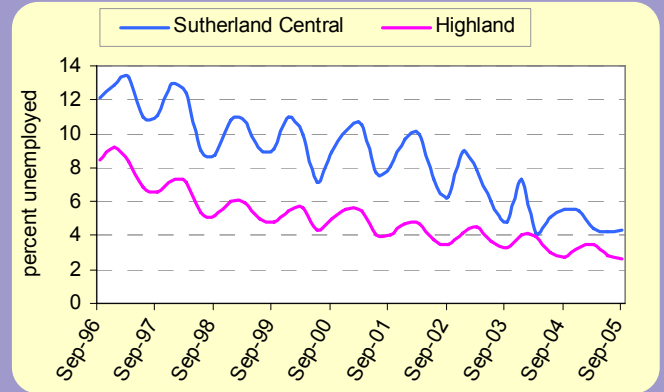
Figure 6: Employment by industry in Central Sutherland



Unemployment

- In September 2005, 4.3% of Central Sutherland residents were registered as unemployed, compared with 2.6% in Highland.
- Unemployment in the area has been reducing since the mid 1990s.

Figure 6: Unemployment

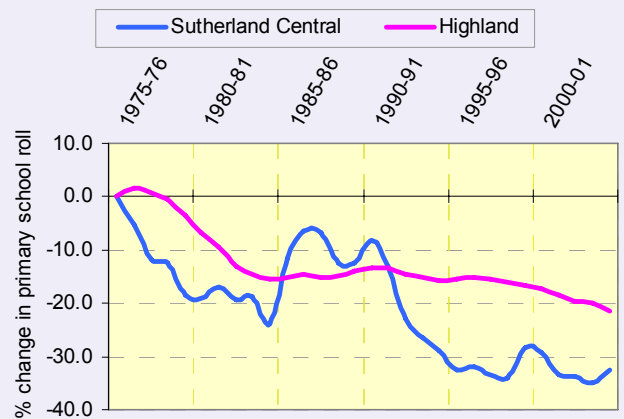


NB. the unemployment rates above are expressed as percentage of economically active people.

Education

- 60.6% of people in Central Sutherland have some qualifications, compared with 67.4% in Highland.
- 18.2% of the Ward population is qualified to degree level, compared with 19.6% in Highland.

Figure 8: Percentage change in primary school rolls since 1975-76

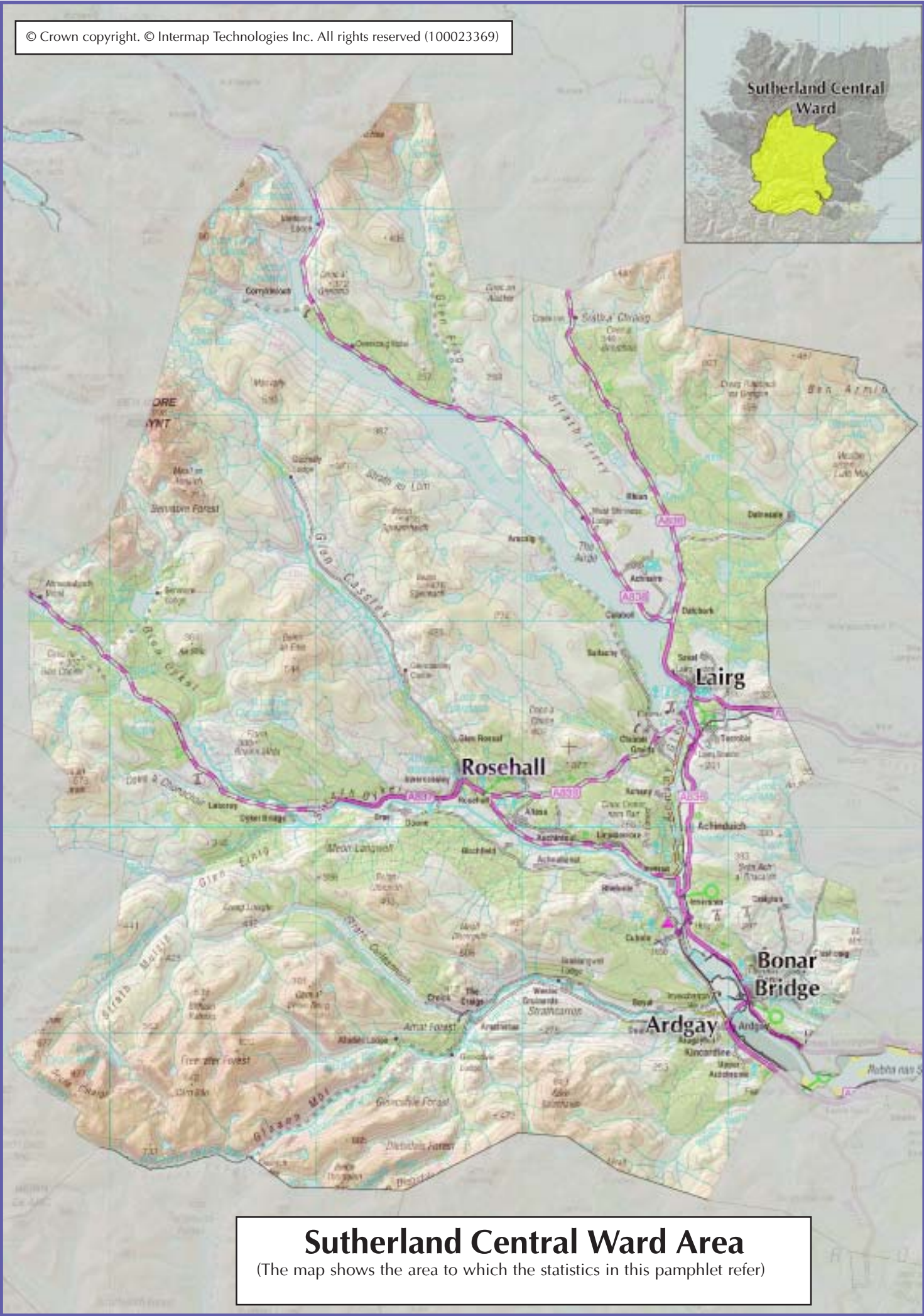


Services

Service	Present
Food Shop	3
Bank	2
GP	2
Hospital (specialised)	1
Primary School	4
Secondary School	×
Library	1
Petrol Filling Station	2
Post Office	4
Highland Council Service Point	2
Tourist Information Centre	1
Swimming Pool	×
Sports Centre	×

Main Settlements

	Population	Households
• Ardgay	267	120
• Bonar Bridge	455	216
• Rosehall	50	27
• Lairg	512	237



Sutherland Central Ward Area
(The map shows the area to which the statistics in this pamphlet refer)