



Figure A-3: Existing Walking and Cycling Infrastructure in Alness

Key:

- ⋯ Part time 20mph zone
- Advisory 20mph zone
- Signalled junctions/pedestrian crossing
- Unsignaled pedestrian crossing
- Signed cycle routes
- National Cycle Network Route 1
- ⋯ Traffic free paths

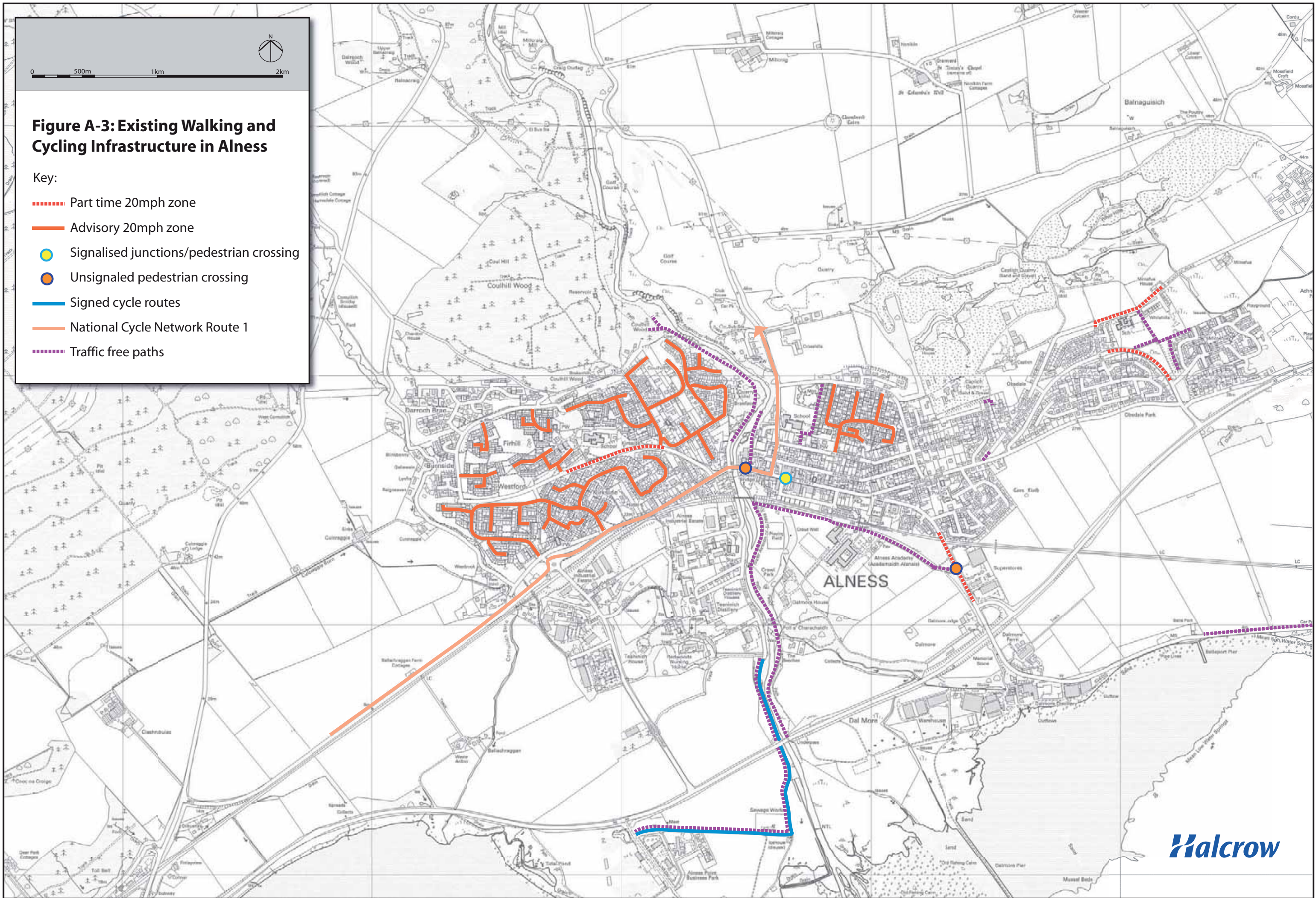




Figure A-4: Existing Walking and Cycling Infrastructure in Invergordon

Key:

- ⋯⋯⋯ Part time 20mph zone
- Advisory 20mph zone
- ⋯⋯⋯ Traffic free paths

