

# SMALL AREA POPULATION ESTIMATES 2004 to 2009

October 2010

## Summary

- The population of Highland increased from 211,340 in 2004 to 220,490 in 2009 (4.3%).
- There were decreases in the 0-15 and 16-44 age groups, and increases in the 45-64 and 65+ age groups.
- The ward with the largest increase in population was Inverness South (4,553 people, 54.7%) with other large increases in Aird & Loch Ness (9.1%), Badenoch & Strathspey (6.5%) and Black Isle (5.4%).
- The largest decreases in population were Wick (-3.1%), Culloden & Ardersier (-2.5%), Thurso (-2.4%) and North, West & Central Sutherland (-2.1%).
- Over wider areas, the greatest growth was in Inverness City (8.5%); the least in our small towns (0.2%); with moderate growth in accessible and remote rural areas (5.7% and 3.8% respectively).
- The population increased in 10 of our 16 deprived areas.
- At a local level, there have been significant increases in areas which have seen new housing; and decreases in both maturing urban areas and rural areas with an ageing population.

## Introduction

On 2nd September 2010 the General Registers Office for Scotland (GROS) published small area population estimates for 2009. These estimates are produced for *datazones*, geographic units which are Government's standard for the presentation of local statistics. They have typical populations of 500 to 1,000 people and are small enough to be aggregated up to provide trends for other areas such as multi-member wards. Estimates for datazones can show some volatility on a year by year basis but with data available since 2001 comparisons can be made over time. This current note looks at changes over the last five years – from July 2004 to June 2009 – a period of rapid growth followed by two years of recession.

## Methodology

GROS use a standard cohort-component methodology which modifies the baseline population (2001 Census) by ageing it and adjusting it with information on births, deaths and migration. Migration within the UK comes from records of registrations with doctors and moves between them, and overseas migration is taken from the International Passenger Survey at ports and airports.

## Highland Headlines

Between 2004 and 2009 there was an increase of 9,150 people (4.3%) over all age groups in Highland. Even this relatively short period gives a stark reminder of our ageing population with large increases in older age groups: a 9.2% increase in people aged 45-64 and a 11.6% increase in people aged 65 and over. There was a 0.2% decrease in people aged 16-44 and, despite recent increases in the birth rate, a decrease of 1.4% in 0-15 year olds. Briefing Note 38 – Council Area Population Projections 2008-2033 – gives more information on the way these trends are expected to continue.

## Ward Analysis

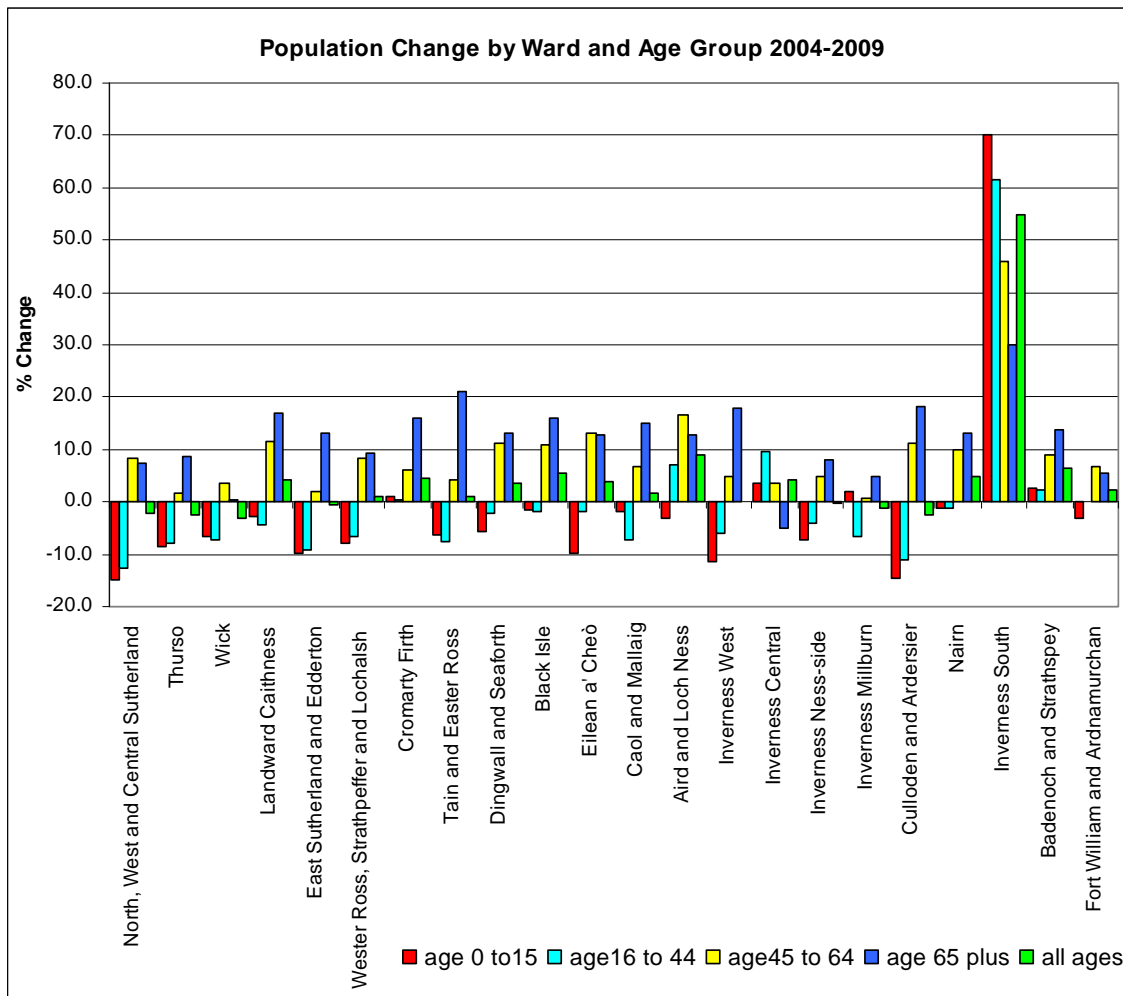
There is a significant variation in the population change between 2004 and 2009 for each Ward:

- The largest increase of 4,553 (54.7%), spread across all age groups, was in Inverness South. Other wards with significant increases in the total population were Aird & Loch Ness (9.1%) and Badenoch & Strathspey (6.5%) and Black Isle (5.4%).
- The population decreased in eight wards, with the biggest decreases in Wick (-3.1%), Culloden & Ardersier (-2.5%), Thurso (-2.4%) and North, West & Central Sutherland (-2.1%).

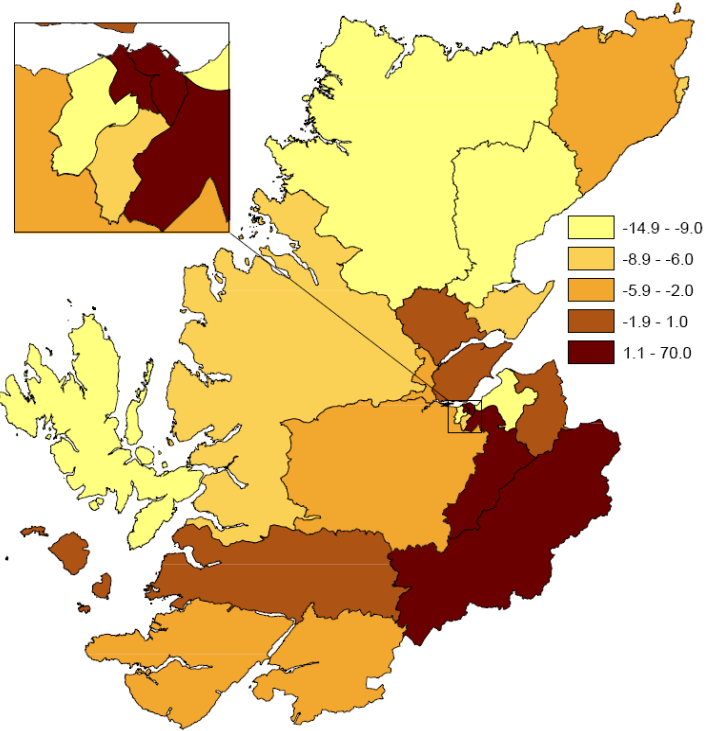
- Only four wards had increases in both younger age groups (0-15 and 16-44): Inverness South, Inverness Central, Badenoch & Strathspey, and Cromarty Firth.
- All wards had increases in retirement age people (65+) apart from Inverness Central.

Ward Number	Ward Name	2004 Population	2009 Population	age 0 to15	age16 to 44	age45 to 64	age 65 plus	all ages	New Houses 04 to 09
1	North, West and Central Sutherland	5,802	5,681	-14.9	-12.6	8.5	7.4	-2.1	140
2	Thurso	7,521	7,344	-8.5	-7.8	1.6	8.8	-2.4	109
3	Wick	6,890	6,676	-6.6	-7.1	3.5	0.2	-3.1	109
4	Landward Caithness	10,726	11,179	-2.9	-4.4	11.5	16.9	4.2	442
5	East Sutherland and Edderton	7,843	7,799	-9.7	-9.2	2.0	13.1	-0.6	197
6	Wester Ross, Strathpeffer and Lochalsh	11,394	11,494	-8.0	-6.8	8.4	9.4	0.9	328
7	Cromarty Firth	11,387	11,891	1.0	0.4	6.2	16.0	4.4	324
8	Tain and Easter Ross	8,721	8,806	-6.2	-7.6	4.2	21.1	1.0	186
9	Dingwall and Seaforth	11,914	12,334	-5.6	-2.1	11.3	13.1	3.5	381
10	Black Isle	9,216	9,715	-1.4	-1.9	10.8	16.1	5.4	217
11	Eilean a' Cheò	9,658	10,046	-9.7	-1.9	13.0	12.9	4.0	507
12	Caol and Mallaig	7,636	7,768	-1.9	-7.3	6.8	14.9	1.7	195
13	Aird and Loch Ness	9,552	10,418	-3.3	7.0	16.6	12.7	9.1	505
14	Inverness West	8,158	8,159	-11.5	-6.0	5.0	17.9	0.0	237
15	Inverness Central	13,119	13,683	3.5	9.5	3.6	-5.1	4.3	407
16	Inverness Ness-side	10,151	10,128	-7.2	-4.1	4.7	7.9	-0.2	55
17	Inverness Millburn	8,119	8,019	2.1	-6.6	0.8	4.9	-1.2	14
18	Culloden and Ardersier	11,191	10,914	-14.4	-11.0	11.3	18.1	-2.5	162
19	Nairn	10,970	11,492	-1.1	-1.2	9.8	13.2	4.8	372
20	Inverness South	8,317	12,870	70.0	61.4	45.8	30.2	54.7	1,975
21	Badenoch and Strathspey	11,879	12,649	2.6	2.3	8.9	13.6	6.5	645
22	Fort William and Ardnamurchan	11,176	11,425	-3.1	0.0	6.6	5.5	2.2	237
	Highland	211,340	220,490	-1.4	-0.2	9.2	11.6	4.3	7,744

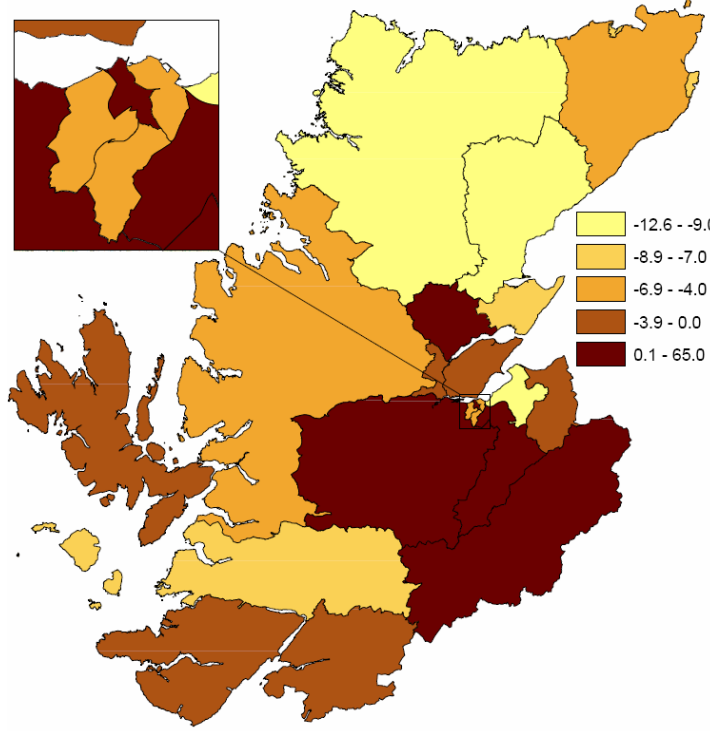
Population increase is often the result of new house building and, in particular the very high population increases across all age groups in the Inverness South ward result from the building of nearly 2,000 houses between 2004 and 2009. The information in this table is summarised in the chart and maps which follow below.



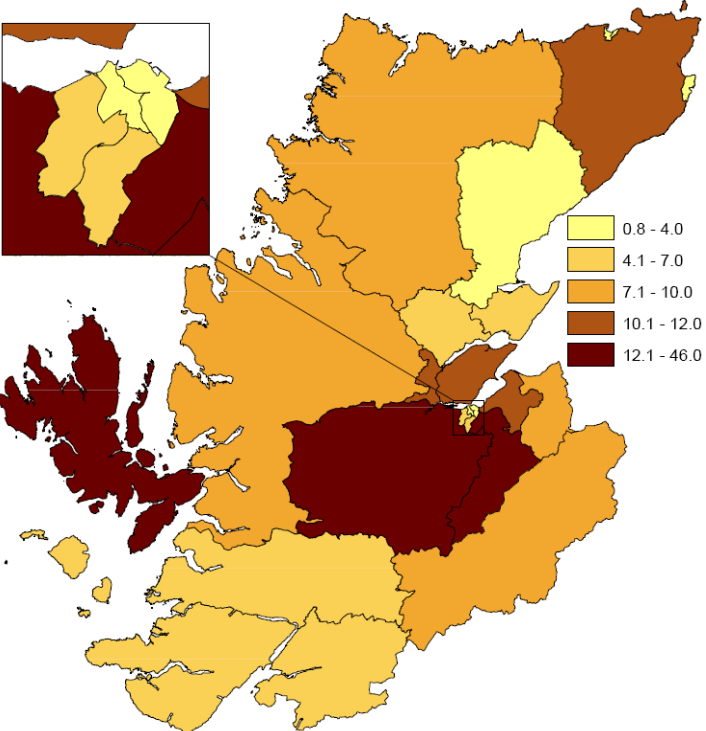
Percentage Change: Young People Aged 0 to 15



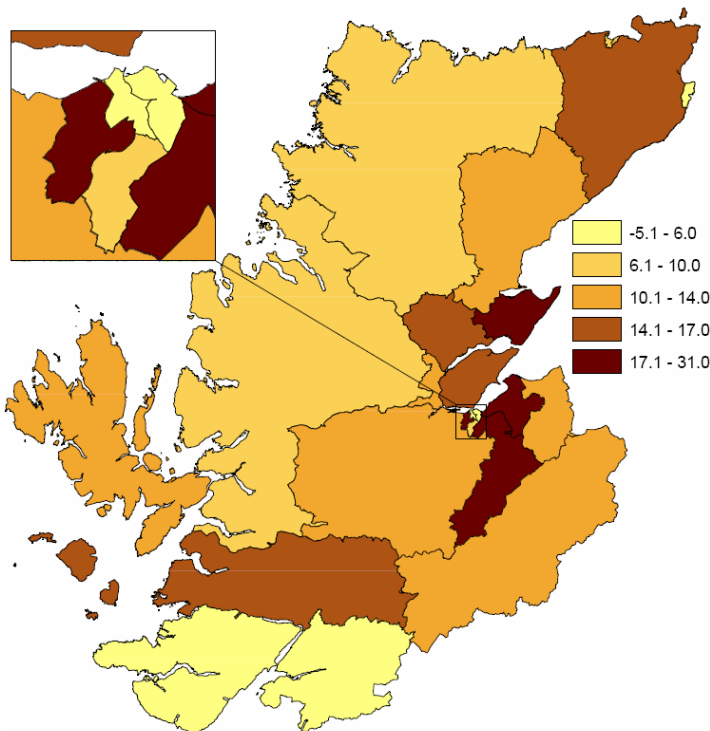
Percentage Change: Working Age People Aged 16 to 44



Percentage Change: Working Age People Aged 45 to 64

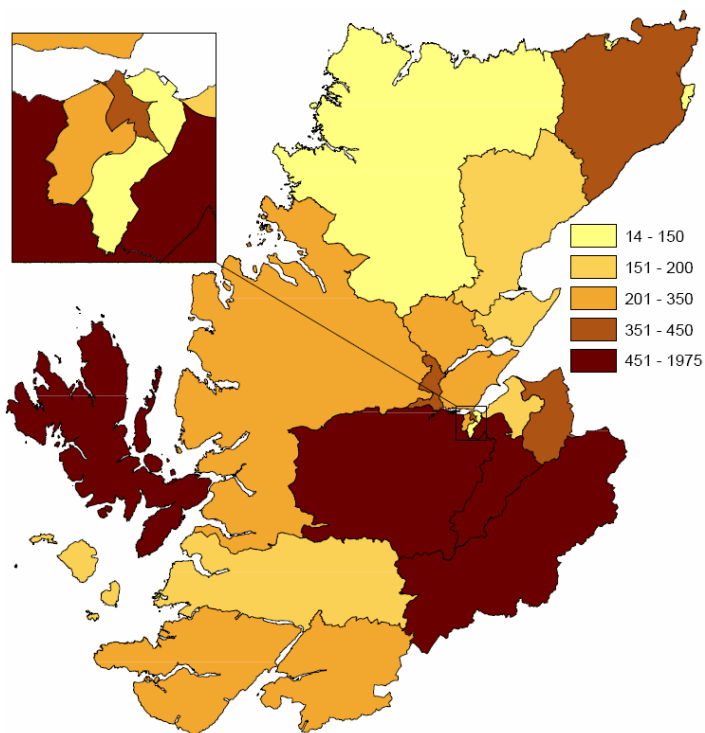
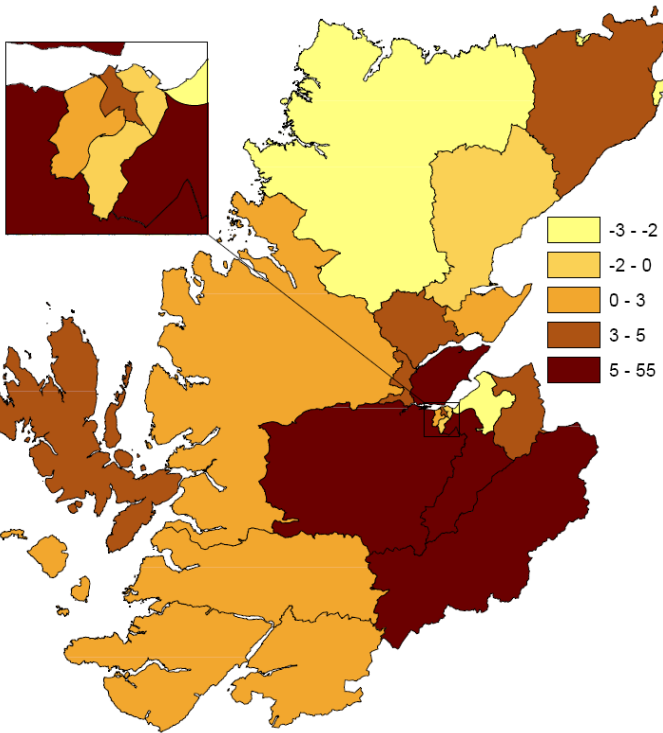


Percentage Change: Retired People Aged 65+



### Percentage Change: Total Population

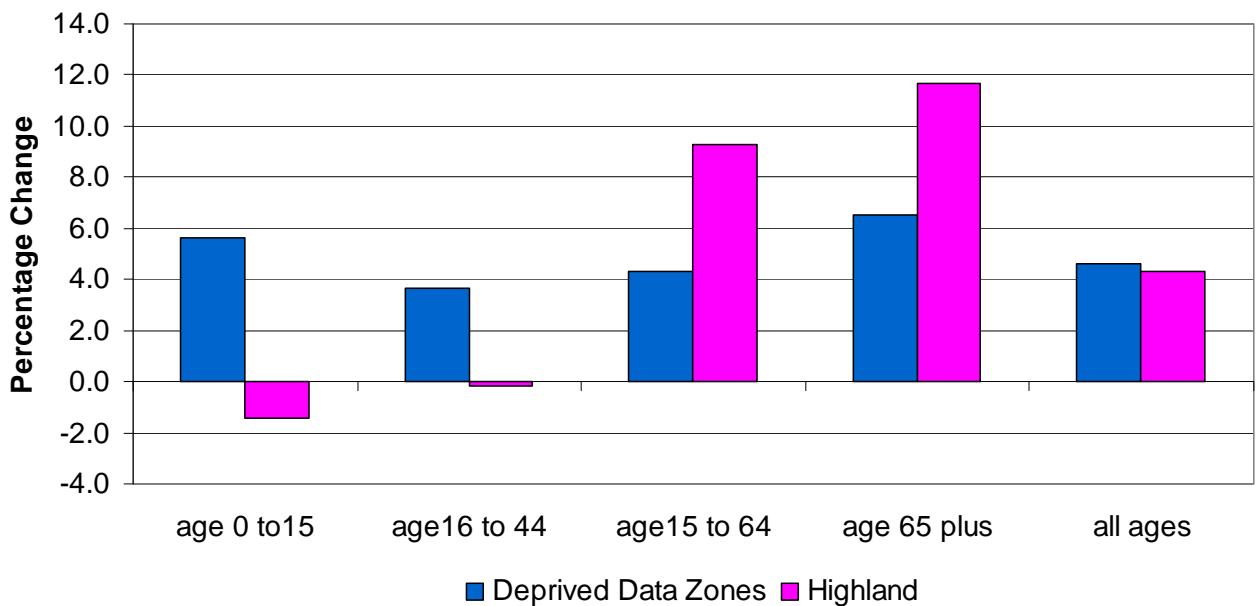
### Numbers of New Houses Built 2005 to 2009



### Deprivation (Scottish Index of Multiple Deprivation 2009)

In 2009 there were 16 datazones in Highland within the 15% most deprived in Scotland and recognised nationally as deprived. The population increased in 10 out of these 16 zones with the biggest increases in Inverness Merkinch East and Central & Longman where there was significant new house building. The profile of age change in these deprived areas is more balanced than the change profile for Highland overall.

**% Population Change in Deprived Areas 2004-2009  
(As Defined by SIMD09)**



## Urban / Rural Analysis (Scottish Government 6 Fold Urban Rural Classification)

The classification assigns each datazone to one of six urban - rural categories: full definitions are given at the end of this note. There are clear differences between the areas:

- The highest rate of growth, and also rate of new house building, was in *other urban areas* (8.5% - Inverness City) with the population growth spread relatively evenly across all age groups.
- Remote small towns* (all of our towns) have seen the lowest rate of growth (0.2%) and also the lowest rate of new house building.
- The rates of population growth and house building were similar in both *accessible* and *remote rural* areas.
- The population in *accessible rural areas* – which approximate to the Inverness commuter belt – grew by 5.7% and they also saw the biggest increase in the over 65 age group (17.7%).
- The population in *remote rural areas* grew by 3.8%.

Urban / Rural Classification 2009/10	2004 Population	2009 Population	Percentage Change 2004 to 2009					New Houses 04 to 09
			age 0 to 15	age 16 to 44	age 15 to 64	age 65 plus	all ages	
2 - Other Urban Areas	53,825	58,385	7.3	7.1	10.9	9.2	8.5	2,685
4 - Remote Small Towns	50,193	50,274	-3.5	-4.6	4.4	7.7	0.2	899
5 - Accessible Rural	20,726	21,907	-2.4	-0.5	11.5	17.7	5.7	801
6 - Remote Rural	86,596	89,924	-5.4	-2.8	10.3	13.8	3.8	3,359
Highland	211,340	220,490	-1.4	-0.2	9.2	11.6	4.3	7,744

### Datazone Analysis

There are 292 datazones in Highland and the pattern of change gives a useful insight into population change at a local level. A spreadsheet giving information for each datazone is available at:

[web tables](#)

**Population increase – top twenty.** The twenty datazones with the largest population increase are given in the table below. In all cases bar one, new housing is the main driver. The exception is Inverness Inshes Wood (Westhill). Originally built as mainly affordable Council and Housing Association developments, around half of the houses are now owned privately and are still relatively low cost. The population growth has been across all three younger age groups, including children.

20 Datazones With The Largest Percentage Population Increase, 2004 to 2009						
Datazone	Datazone name	2004	2009	% change	New Houses	
S01003778	Inverness South	698	2,223	218.5	762	
S01003819	Westhill East	767	1,821	137.4	504	
S01003792	Inverness Inshes	1,073	2,009	87.2	338	
S01003755	Aviemore West	749	1,238	65.3	303	
S01003784	Inverness Castle Heather South	837	1,313	56.9	118	
S01003888	Nairn East Rural	950	1,414	48.8	186	
S01003828	Inverness East	765	1,021	33.5	177	
S01003849	Inverness Merkinch East	682	904	32.6	111	
S01003804	Inverness Inshes Wood	631	834	32.2	0	
S01003753	Loch Ness South	1,036	1,314	26.8	103	
S01003905	Culbokie	920	1,130	22.8	71	
S01003853	Inverness Central & Longman	815	994	22.0	187	
S01003808	Portree North	670	810	20.9	95	
S01003843	Beaully Rural	699	840	20.2	29	
S01003931	Alness Obsdale	791	940	18.8	82	
S01003995	Thurso Rural	981	1,153	17.5	106	
S01003921	Alness Dalmore	819	959	17.1	55	
S01003987	Wick Broadhaven	611	710	16.2	37	
S01003922	Alness Teaninich	784	910	16.1	30	
S01003972	Thrumster & Clyth	643	745	15.9	33	

**Population Decrease – top twenty.** Population decrease is associated with low levels of house building, and zones experiencing rapid population decline can be characterised into two general types:

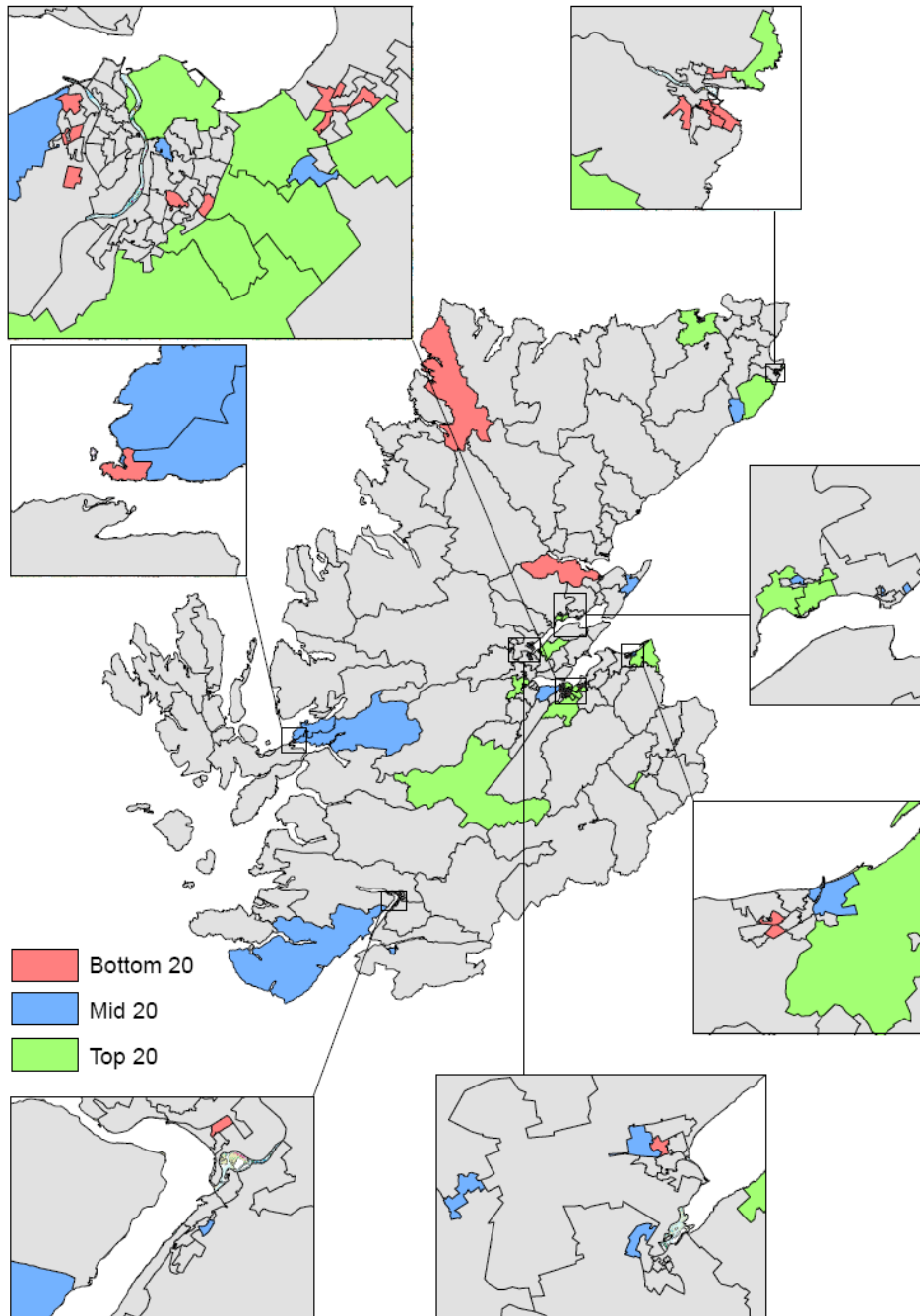
- Most are maturing urban areas built over a short period of time and often occupied by families. Children move away, the parents remain in the house, and the turnover through sales is not high enough to refresh the population.
- Rural areas with an ageing population.

<b>20 Datazones With The Largest Percentage Population Decrease, 2004 to 2009</b>					
<b>Datazone</b>	<b>Datazone name</b>	<b>2004</b>	<b>2009</b>	<b>% change</b>	<b>New Houses</b>
S01003978	Wick South Head	560	521	-7.0	1
S01003949	Edderton	609	566	-7.1	9
S01003977	Wick Pultneytown South	523	486	-7.1	0
S01003981	Wick Pultneytown North	569	527	-7.4	0
S01003799	Inverness Drakies South	784	725	-7.5	0
S01003809	Inverness Kinmylies South	742	679	-8.5	0
S01003848	Inverness Scorguie	714	651	-8.8	0
S01003886	Nairn Academy	535	487	-9.0	0
S01003908	Dingwall Academy	743	676	-9.0	2
S01003891	Nairn Achareidh South	731	665	-9.0	0
S01003736	Caol North East	764	694	-9.2	0
S01003801	Inverness Hilton North	785	709	-9.7	0
S01003985	Wick Hillhead North	757	680	-10.2	4
S01003831	Inverness Scorguie South	627	563	-10.2	0
S01003850	Culloden Blackwell	537	481	-10.4	4
S01003858	Culloden Walker Crescent	562	503	-10.5	0
S01003765	Kyle of Lochalsh	744	650	-12.6	0
S01003838	Smithton West	676	590	-12.7	0
S01003979	Wick South West	617	534	-13.5	0
S01003973	Kinlochbervie & Achfary	540	459	-15.0	6

**The twenty most stable zones.** Most have seen relatively low levels of house building and the apparent stability tends to mask a significant increase in the number of people in the two older age groups, with a corresponding reduction in the number of young people. Exceptions moving towards a more balanced profile are Clashmore, Inverness Hilton West and Inverness Haugh East, while Glencoe and Inverness Scorguie Central have seen the most extreme ageing.

<b>20 Datazones With The Most Stable Total Population, 2004 to 2009</b>					
<b>Datazone</b>	<b>Datazone name</b>	<b>2004</b>	<b>2009</b>	<b>% change</b>	<b>New Houses</b>
S01003748	Kingussie South West	574	577	0.4	6
S01003966	Lairg	957	962	0.2	20
S01003719	Glencoe	599	602	0.2	26
S01003810	Inverness Haugh East	833	836	0.1	3
S01003950	Dornoch East	760	762	0.1	19
S01003988	Melvich	525	526	0.1	2
S01003940	Tain South Rural	862	863	0.0	10
S01003796	Inverness Hilton West	632	632	0.0	0
S01003885	Nairn Sandown	639	639	0.0	11
S01003992	Halkirk	934	934	0.0	19
S01003840	Inverness Scorguie Central	733	731	-0.1	0
S01003920	Invergordon Cromlet	715	713	-0.1	32
S01003916	Balblair	809	806	-0.2	10
S01003952	Clashmore	515	512	-0.2	8
S01004002	Thurso Central	791	786	-0.3	43
S01003918	Evanton	890	884	-0.3	22
S01003968	Helmsdale & Kinbrace	847	841	-0.4	5
S01003846	Lochcarron	702	697	-0.4	15
S01003741	Loch Eil	875	868	-0.4	22
S01003999	Thurso Pennyland South	847	840	-0.4	25

## High Growth, Low Growth and Stable Datazones



Scottish Government Six Fold Urban / Rural Classification 2009/10		
1	Large Urban Areas (None in Highland)	Population of over 125,000
2	Other Urban Areas	Settlements of 10,000 to 125,000 people.
3	Accessible Small Towns (None in Highland)	Accessible Small Towns - Settlements of between 3,000 and 10,000 people and within 30 minutes drive of a settlement of 10,000 or more.
4	Remote Small Towns	Remote Small Towns - Settlements of between 3,000 and 10,000 people and with a drive time of over 30 minutes to a settlement of 10,000 or more.
5	Accessible Rural	Accessible Rural - Settlements of less than 3,000 people and within 30 minutes drive of a settlement of 10,000 or more.
6	Remote Rural	Remote Rural - Settlements of less than 3,000 people and with a drive time of over 30 minutes to a settlement of 10,000 or more.

The GROS Small Area Population Estimates are available at  
[GROS SAPE 2009](#)

Produced by the Information & Research Team; Planning & Development Service  
 For further information please contact:  
 Michelle Douglas [michelle.douglas@highland.gov.uk](mailto:michelle.douglas@highland.gov.uk); or  
 Cameron Thomas [cameron.thomas@highland.gov.uk](mailto:cameron.thomas@highland.gov.uk)