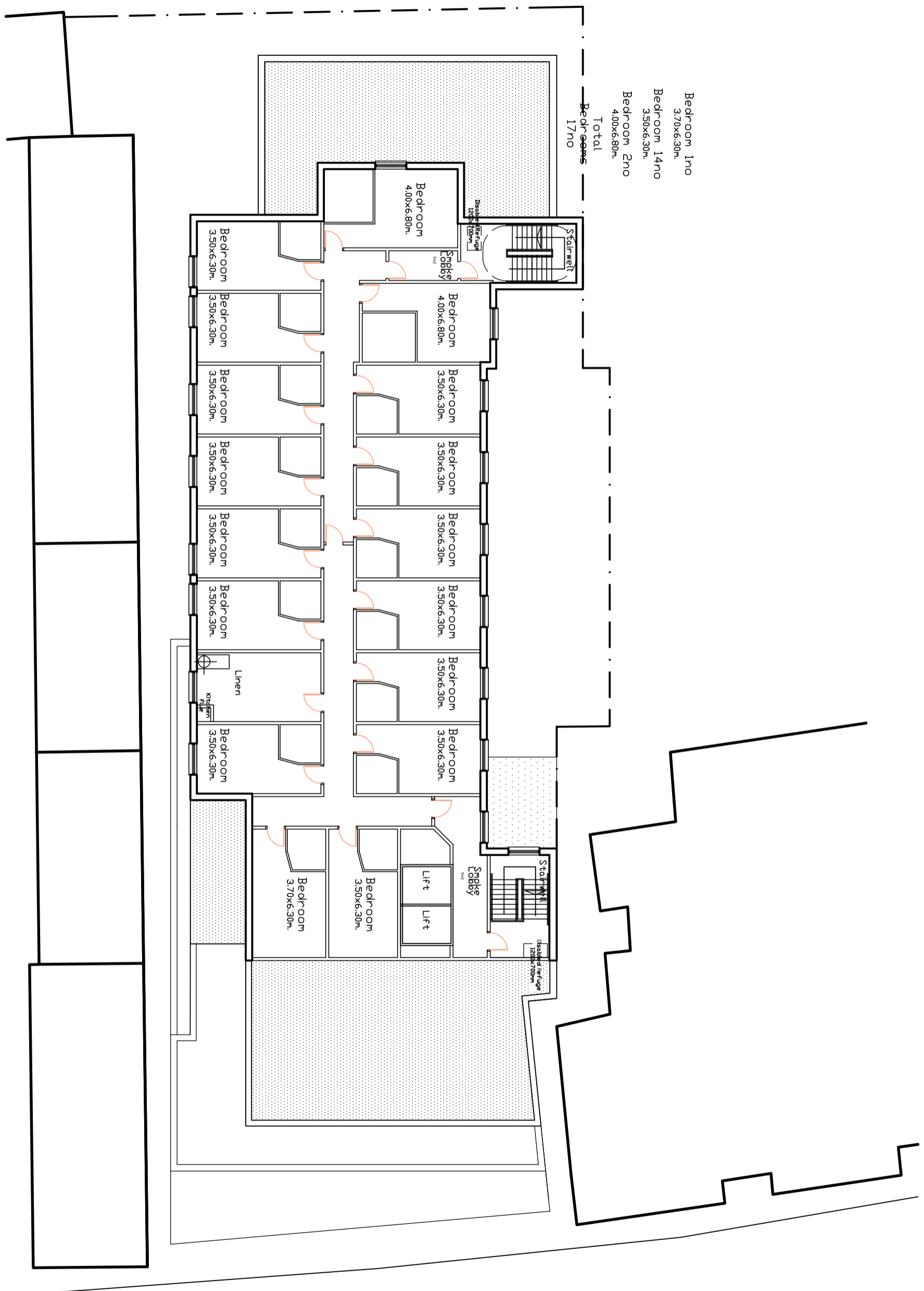
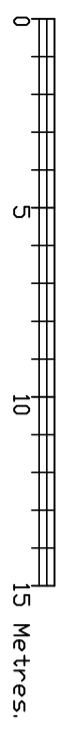


Bedroom 1no
 3.70x6.30m.
 Bedroom 14no
 3.50x6.30m.
 Bedroom 2no
 4.00x6.80m.
 Total
 Bedrooms
 17no



FOURTH FLOOR LAYOUT. 1:200



PLANNING PROPOSALS,
 PROPOSED HOTEL, HUNTLY STREET, INVERNESS.

albon house
 6 cast. ch ll
 300/dear
 a21 1 5g1
 bel 01224 365510
 fax 01224 355913
 t0700cummingandco.com
 www.cummingandco.co.uk
cummingandco

CLIENT	Ardmuir Properties		
PROJECT	19-21 Huntly Street, Inverness		
CONTENT	Fourth Floor Layout		
SCALE	1:200	DATE	January 2008
JOB REFERENCE	07-124	DRAWING	PL-06
		REV	A