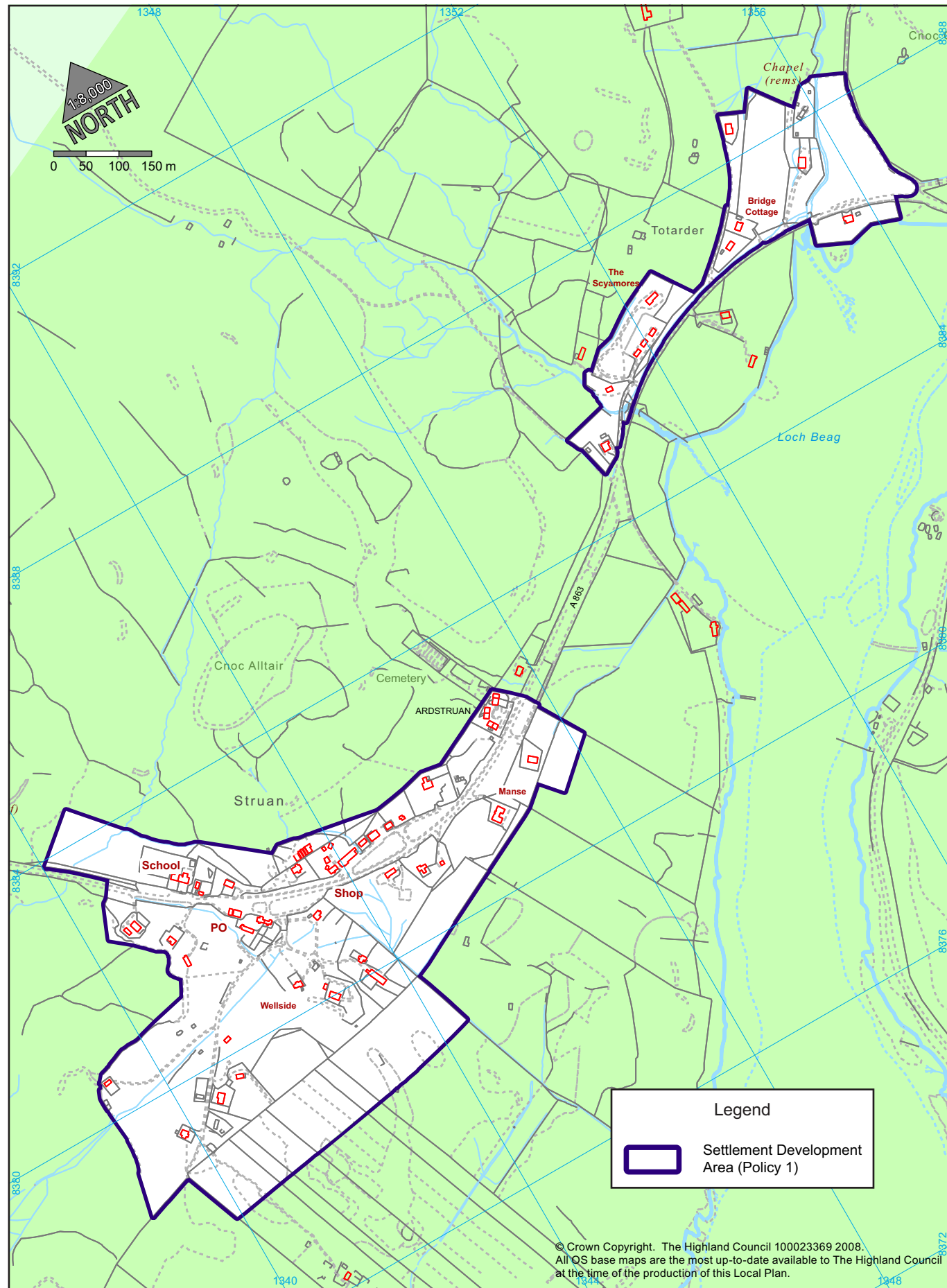


# INSET SL113 : STRUAN & TOTARDER

## Inset SL113 : An Sruthan & Tobhta Àrdair



### Objectives

- To secure exceptional siting and design quality where public seaward views are likely to be affected or land within a landscape designation.
- To secure developer funded road improvements where a network deficiency is created or worsened.
- To protect public seaward views where applicable.
- To safeguard in bye croft land quality by favouring siting on poorer parts of crofts or on common grazings where applicable.
- To secure adequate A863 access for developments in Totarder.