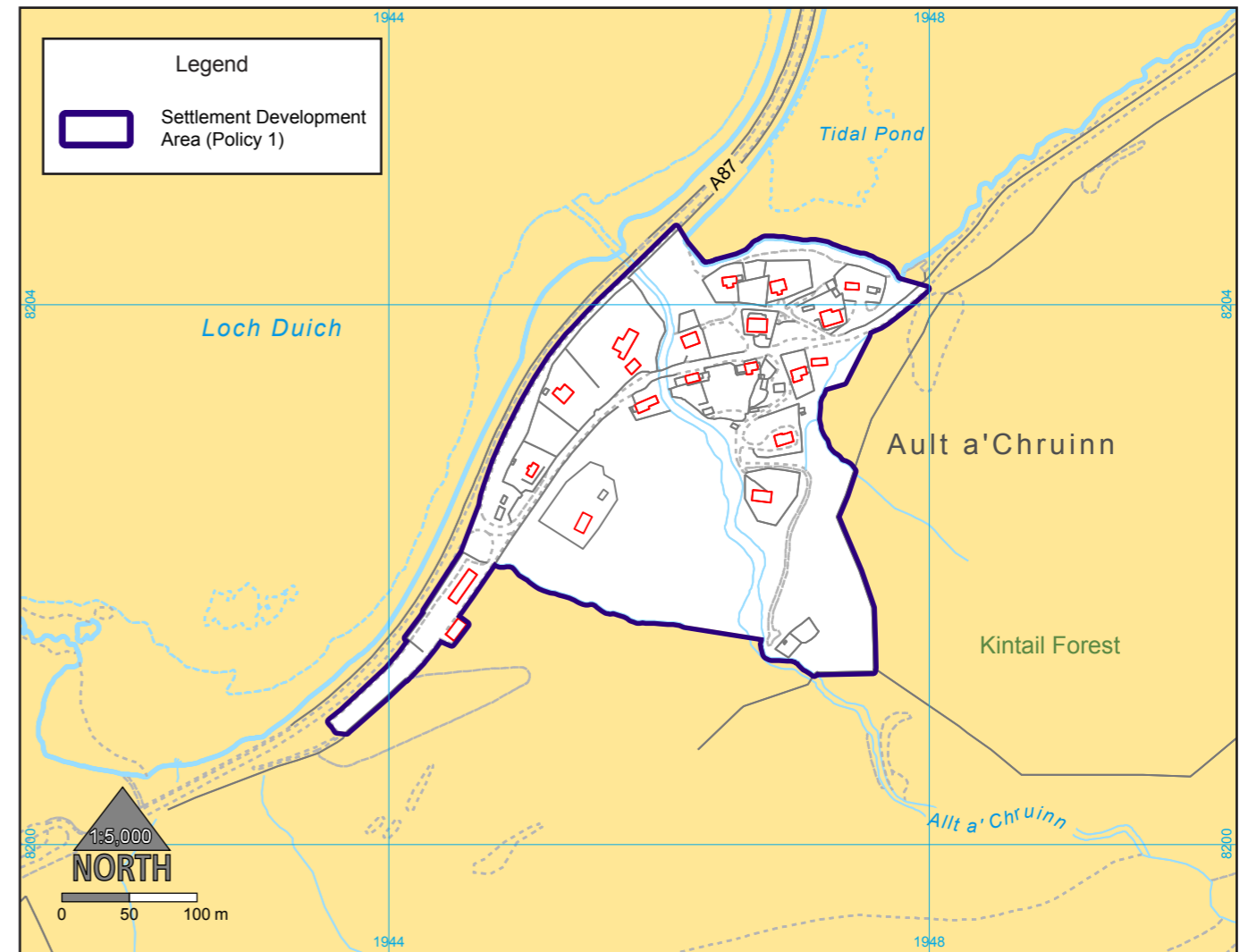


© Crown Copyright. The Highland Council 100023369 2008.  
All OS base maps are the most up-to-date available to The Highland Council at the time of the production of this Local Plan.



**Objectives**

- To take account of the severe gradient constraints particularly on the side of the community's principal burn.
- To secure exceptional siting and design quality where public seaward views are likely to be affected or land is within a landscape designation.
- To secure road improvements where a network deficiency is created or worsened.
- To respect the integrity of the NSA.

**Objectives**

- To minimise pedestrian crossing movements of the A87 spine road.
- To identify development as close as possible to the village centre in particular for affordable housing.
- To take account of the following development factors: steep ground to the north and Loch Duich to the south; trunk road access and visual prominence constraints; the attractive outlook over Loch Duich which is part of a SAC; and the pockets of amenity woodland on the lochside.
- To maximise retention of coastal woodland/scrub.