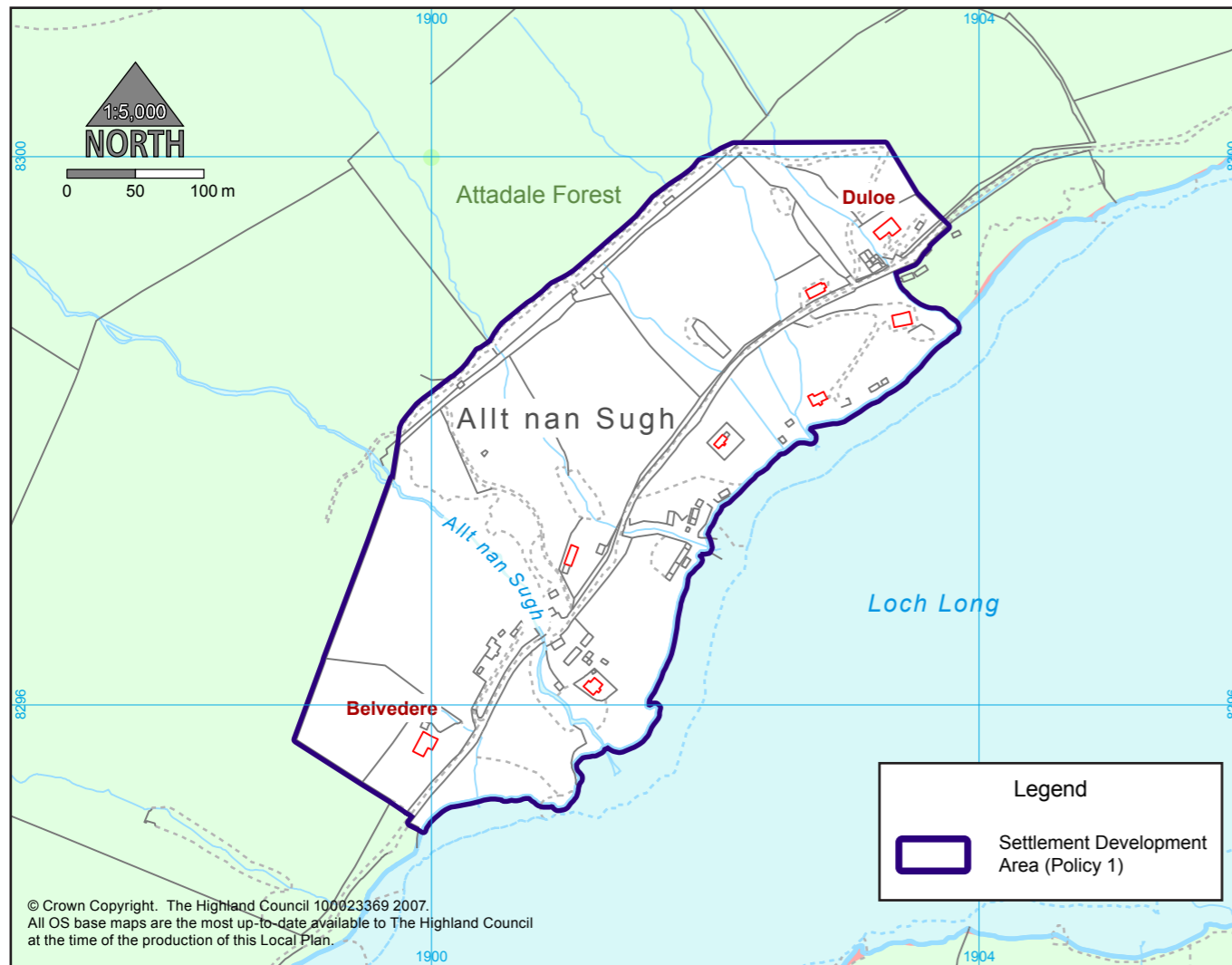


## INSET SL12 : ALLT NAN SUGH

Inset SL12 : Gaelic Name

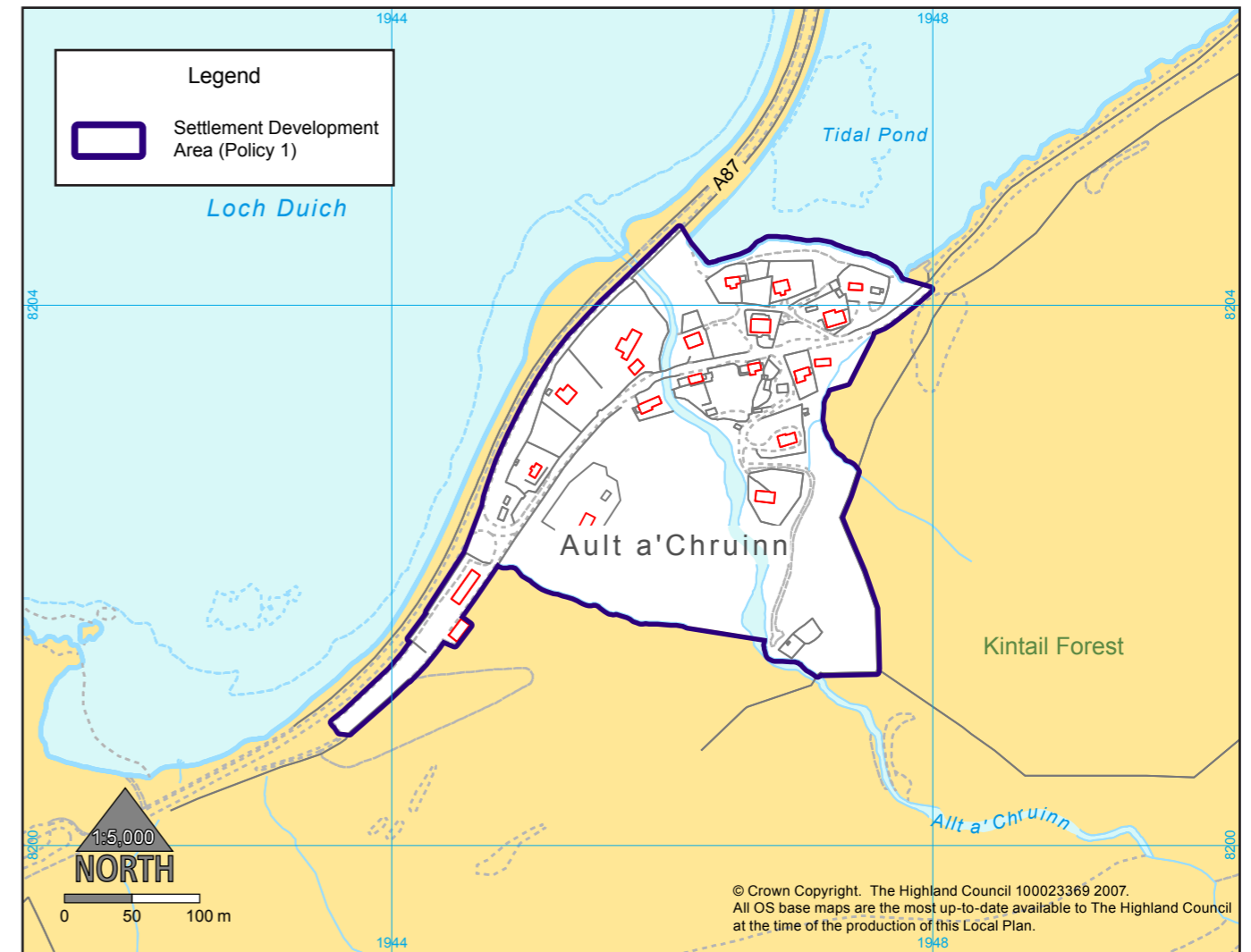


### Objectives

- To safeguard in bye croft land quality by favouring siting on poorer parts of crofts or on common grazings where applicable.
- To protect seaward views where applicable.
- To secure developer funded local road improvements to the Loch Long spine road because it is constrained in terms of its condition and capacity - this will apply to all development taking access off it and in particular to further development within Allt nan Sugh, Camas Luinie and Sallachy.
- To secure exceptional siting and design quality where public seaward views likely to be affected or land within a landscape designation.

## INSET SL13 : AULT a'CHRUINN

Inset SL13 : Gaelic Name



### Objectives

- To take account of the severe gradient constraints particularly on the sides of the community's principal burn.
- To secure exceptional siting and design quality where public seaward views likely to be affected or land within a landscape designation.
- To secure road improvements where a network deficiency created or worsened.