

EXISTING CARPARK.

23-25 HUNTLY STREET.

K I N G
S T R E E T

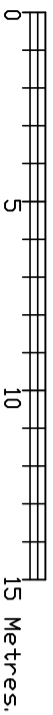
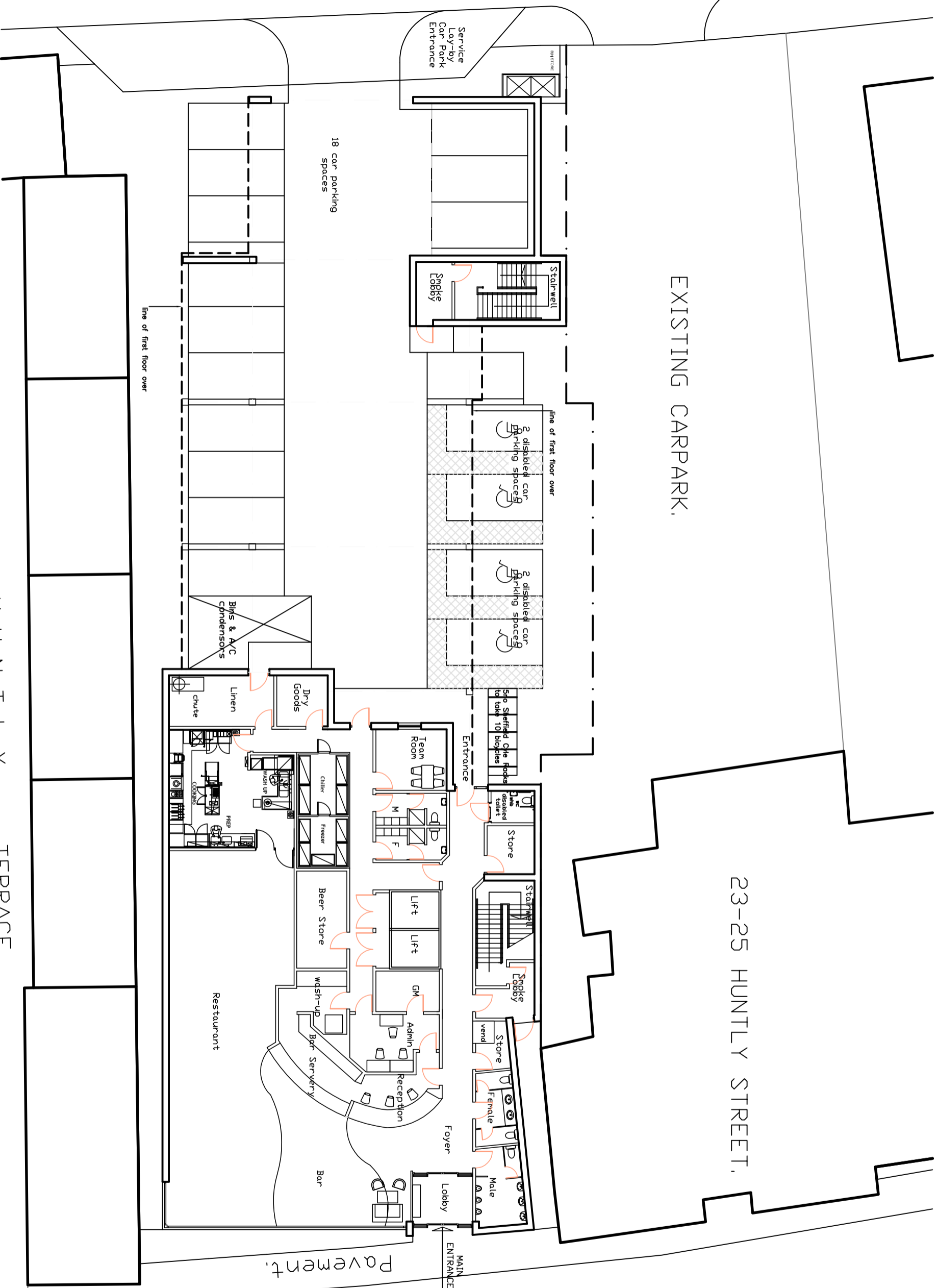
GROUND FLOOR LAYOUT. 1,200

H U N T L Y

T F R R A C E

H U N T L Y
P a v e m e n t.
S T R E E T.

RIVER NESS.



PLANNING PROPOSALS.
 PROPOSED HOTEL, HUNTLY STREET, INVERNESS.

albon houle
6 cast hill
320 deer
ast 1 sqj

tel 01224 365500
fax 01224 355803
rt08@cummingandco.com
www.cummingandco.com

cummingandco

CLIENT	Ardmuir Properties		
PROJECT	19-21 Huntly Street, Inverness		
CONTENT	Ground Floor Layout Plan		
SCALE	1,200	DATE	January 2009
JOB REFERENCE	07-124	DRAWING	02
REV	A		