

HOUSE COMPLETIONS IN HIGHLAND

October 2010 to December 2010

February 2011

SUMMARY

- Between October 2010 and December 2010, 221 new houses were completed in the Highland Council area, showing a marked reduction from the previous quarter (413); The unexpected severe winter weather in November & December may have contributed to the reduction in completions.
- This is a decrease compared to the same period in 2009 (379).

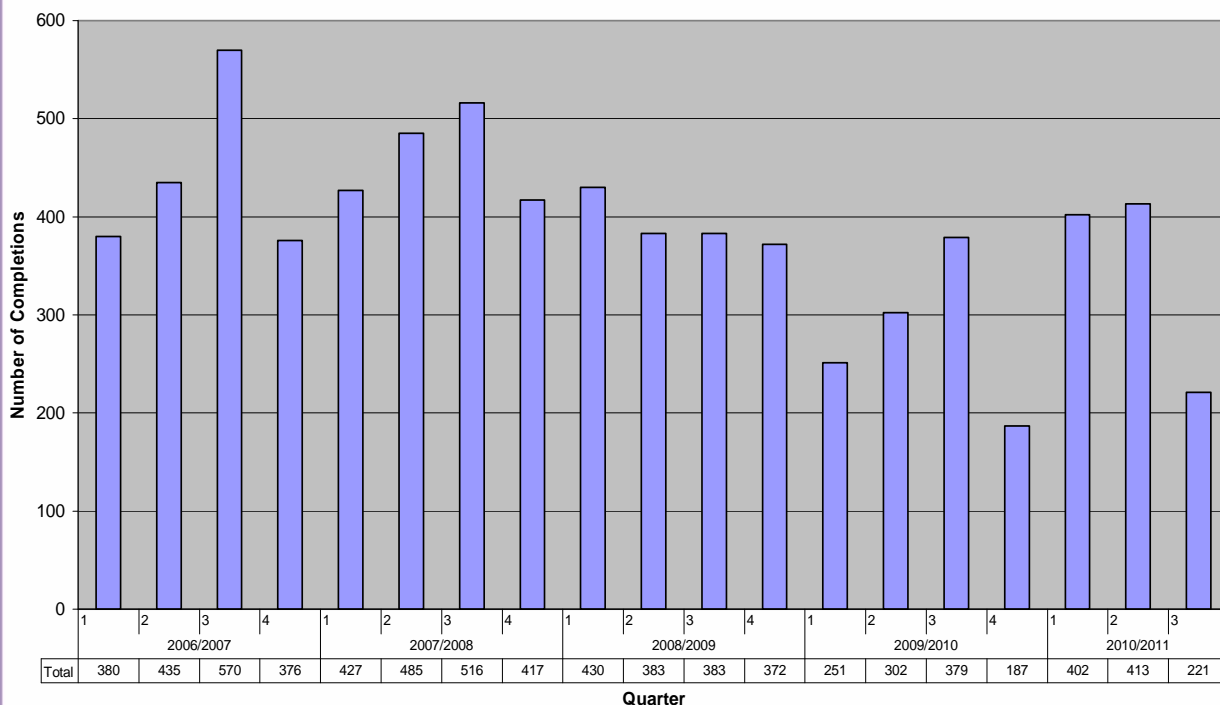
HOUSE COMPLETIONS

Between October and December 2010, 221 new houses were completed in the Highland Council area. This is a marked reduction on the same periods for both 2009/10 (379 new homes) and 2008/09 (383 new homes). However the signs are that there will be a small increase in the number of houses completed over the whole of 2010/11 compared to 2009/10.

The unexpectedly severe cold and wintry weather at the end of November and throughout December combined with the Christmas and New Year holidays will have had a significant impact on the numbers of completions. The current economic climate and the general reduction in housing development will also have played its part.

The Council is working with partners to ensure that as far as possible completion rates are maintained at as high a rate as possible.

Figure 1: Number of new houses completed in Highland by quarter 2005 – 2010/11

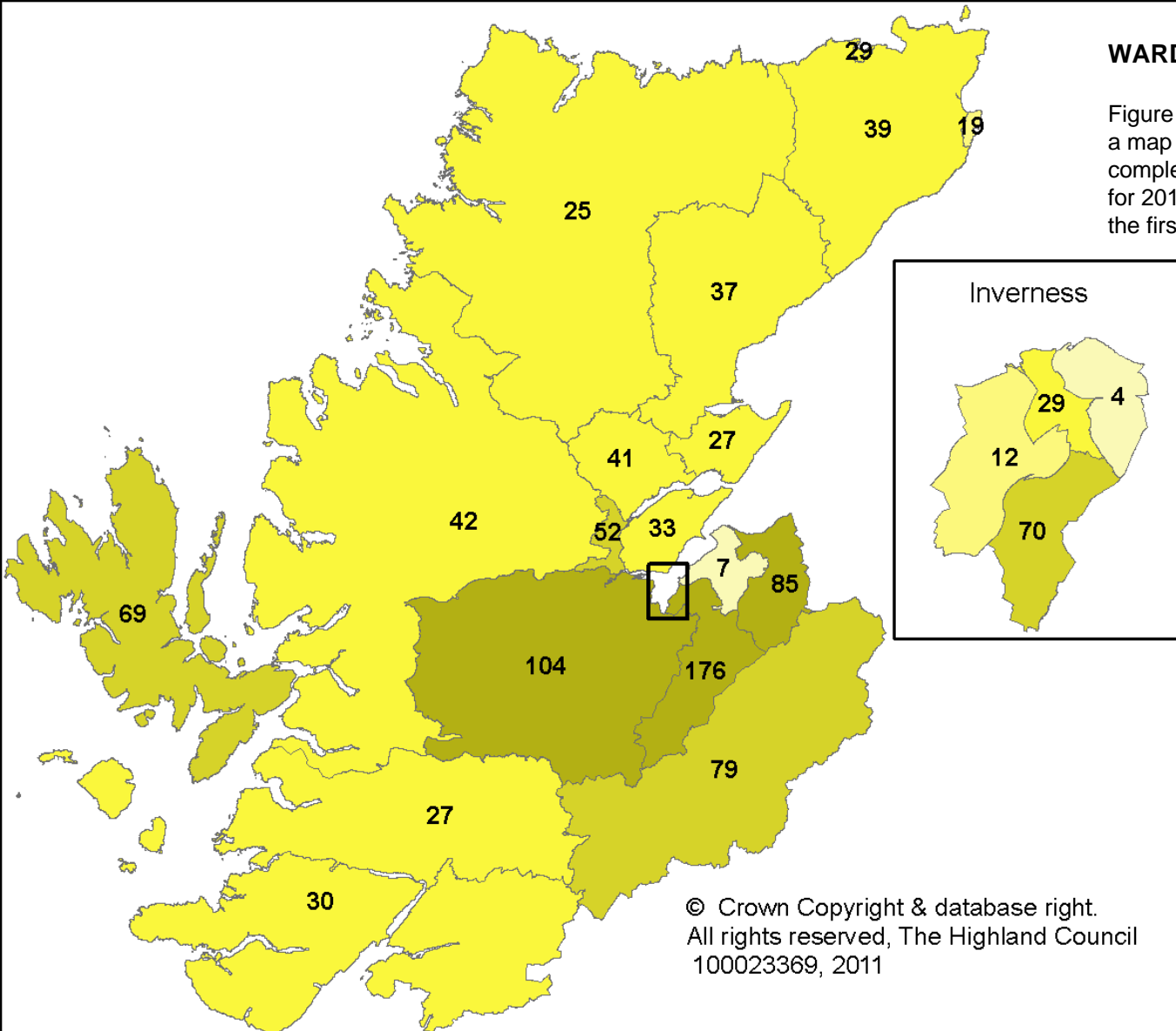


A detailed analysis by Council Ward can be seen overleaf in Figure 3. The key wards where development rates have remained relatively high were in Inverness South; Inverness Ness-Side; Aird and Loch Ness; Cromarty Firth.

The figures are based on Building Standards completion certificates issued by the Council.

WARD FOCUS

Figure 2, left, shows a map of completions by ward for 2010 / 2011 for the first 3 quarters



© Crown Copyright & database right.
All rights reserved, The Highland Council
100023369, 2011

Figure 3: Housing completions for 2006/07 to 31/12/2010

Ward	Ward Name	Year					Total
		2006/2007	2007/2008	2008/2009	2009/2010	2010/2011	
1	North, West and Central Sutherland	48	20	41	20	25	154
2	Thurso	26	54	50	11	29	170
3	Wick	44	38	23	7	19	131
4	Landward Caithness	70	71	73	71	39	324
5	East Sutherland and Edderton	29	27	64	52	37	209
6	Wester Ross, Strathpeffer and Lochalsh	74	61	93	83	42	353
7	Cromarty Firth	79	69	80	67	41	336
8	Tain and Easter Ross	41	44	55	66	27	233
9	Dingwall and Seaforth	36	84	118	54	52	344
10	Black Isle	27	27	45	20	33	152
11	Eilean a' Cheò	96	114	146	109	69	534
12	Caol and Mallaig	31	60	48	40	27	206
13	Aird and Loch Ness	89	153	137	73	104	556
14	Inverness West	34	52	25	3	12	126
15	Inverness Central	87	150	50	21	29	337
16	Inverness Ness-Side	96	95	6	22	70	289
17	Inverness Millburn	2	1	3	16	4	26
18	Culloden and Ardersier	68	68	52	11	7	206
19	Nairn	67	60	53	53	85	318
20	Inverness South	482	406	286	208	176	1558
21	Badenoch and Strathspey	177	151	72	67	79	546
22	Fort William and Ardnamurchan	58	40	48	45	30	221
Highland		1761	1845	1568	1119	1036	7329

Note 2010/2011 Figures are Quarter 1, 2 & 3 (April to December) only