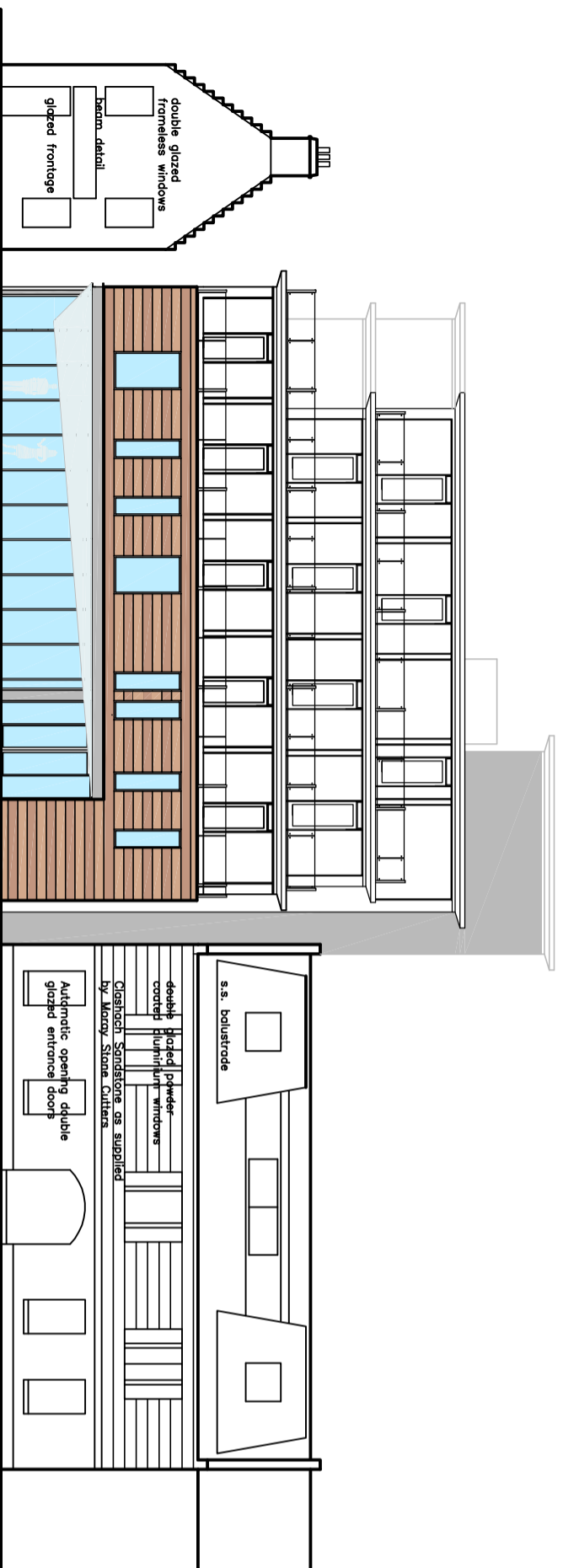




NORTH ELEVATION, 1.200 amended Jan 2009



EAST ELEVATION, 1.200 amended Jan 2009

albert hall, se
6 cas, st ll
33010000
art 11 5gjl

tel 01224 355800
fax 01224 355903

http://www.cummingandco.com
www.cummingandco.co.uk



cummingandco

CLIENT Ardmuir Properties

PROJECT 19-21 Huntly Street, Inverness.

CONTENT North and East Elevations

SCALE 1.200 DATE January 2009

JOB REFERENCE 07-124 DRAWING PL-07 REV A