

# Corporate Improvement Programme



## **Transport Project**

**Louise McCaul**

**27<sup>th</sup> March 2009**

# Overview of Corporate Improvement Programme



- The Programme followed on from the opportunities identified in “Shared Services” project (2008)
- 8 Projects for improvement.....

## **PROJECTS CONTRIBUTING TO THE PROGRAMME**

<b>Project</b>	<b>Supports</b>	<b>Contributing</b>
<b>TRANSPORT</b>	Mobile and Flexible Working	Efficiencies from the right mix between the right transport, reduced travel and better planned journeys
<b>CUSTOMER ENAGAGEMENT AND ASSESSMENT</b>	Mobile and Flexible Working	Provides clearer customer needs to mobile staff allowing better journey planning and enhanced customer service
<b>BUSINESS SUPPORT</b>	Information Management	Clearer and standardised roles in terms of the retrieval, storage and management of information
<b>ASSET MANAGEMENT</b>	Mobile and Flexible Working	Properties that are better equipped to support modern working practices
<b>MFW</b>	Asset Management	Provides a clear and reduced requirement for office accommodation
<b>INFORMATION MANAGEMENT</b>	Mobile and Flexible Working	Enables access to one version of the truth from any location
<b>HR</b>	Business Support	Reduces non value added time managing HR admin
<b>PROCUREMENT</b>	Transport	Can support the procurement of fleet and services

## Target Operating Model V1.0



A reduction in the Corporate Carbon Footprint and delivery of sustainable efficiencies through a Corporate Travel and Transport Strategy



Managed

# Travel and Transport

Sustainable

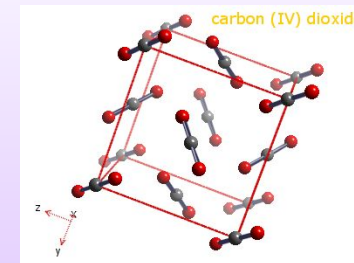
Cost Effective

Efficient

# Links to Carbon Reduction



- Carbon reduction a key driver for the project
- £ saved = less CO<sub>2</sub>



# 3 Types of travel and transport



## Business Travel

Staff (and Councillors)  
travelling on day to day business



## Demand led Transport

Provided for our customers e.g.  
school transport, social work  
transport, community transport



## Operational Transport

Day to day Service Delivery  
(our fleet)



# Current HC Business Travel



Social Work	2,135,074 miles a year
ECS	1,050,598 miles a year
TECS	432,483 miles a year
Planning and Dev	217,432 miles a year
Finance	95,900 miles a year
Chief Execs	236,913 miles a year
Housing and Prop	247,736 miles a year
Building Maintenance	17,880 miles a year

# Service Example- TECS



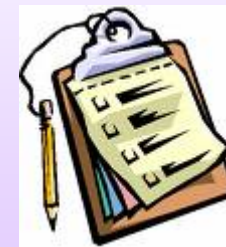
- 10 staff undertook over 12,000 miles each per year
- Could this be better planned, managed and made more efficient?

Examples for managing this: Mobile working, pool cars, using council vehicles which are currently under utilised?

# Service Example- TECS



- 81 staff on essential car allowances did less than 2000 miles per year
- Essential users undertaking 2000-10000 miles per year- mileage reductions can be achieved by better planning and closer scrutiny of journey by staff



# Demand Led Transport



- More efficient school transport
- Opportunities for coordinating social work transport:
- Taxis
- Mini buses
- Essential user
- Meeting clients needs/promoting independence



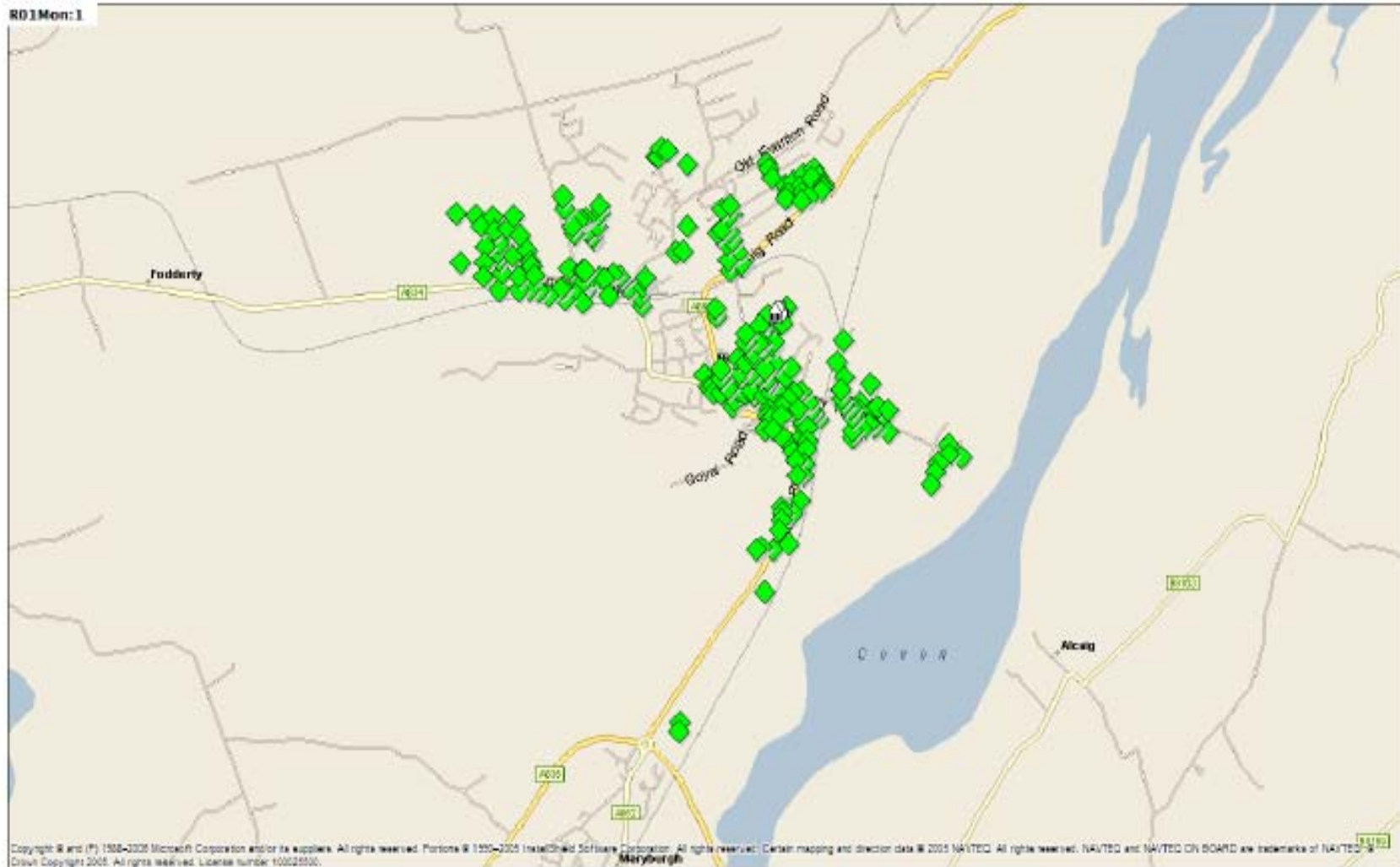
# Operational Transport



- Routing Package required for planning routine journeys e.g. refuse collection
- Refuse collection review 2008 showed that efficiencies could be made....**BUT**
- Major changes to working practices required...e.g. change of time/collection day!



# Round 1 Mon



A reduction in the Corporate Carbon Footprint and delivery of sustainable efficiencies through a Corporate Travel and Transport Strategy



Managed

## Travel and Transport

Sustainable

Cost Effective

Efficient

Thank You, Any Questions.....