

Mid-2010 Population Estimates For Highland

April 2011

Summary

- The population of Highland increased from 220,490 in 2009 to 221,630 in 2010, an increase of 0.52%, fractionally lower than the change for Scotland overall.
- There were 74 more births than deaths in the previous 12 months, the third year in a row with a natural increase after a decade of natural decline.
- In the previous 12 months, we gained 740 people from the rest of the UK and 334 from overseas.
- The median age of our population was 44, higher than the Scotland average of 41.
- We have fewer women in the important 20 to 35 child bearing age group than the Scotland average.
- Over the last decade, the number of people aged over 60 has increased by more than a quarter.

Introduction

On 26th April 2011 National Records of Scotland (NROS) published mid-year estimates for 2010, together with the components of population change during the preceding 12 months. Population change is often linked to the underlying economic conditions and the change between 2009 and 2010 gives a partial insight into how the current economic downturn is affecting Highland. Any population growth has implications for service delivery at a time of tightening budgets, and for the planning process and house building at a time when the industry is also experiencing financial constraints.

This note presents the 2010 population figures and changes since 2009, discusses the components of change, and makes comparisons with other areas of Scotland.

Methodology

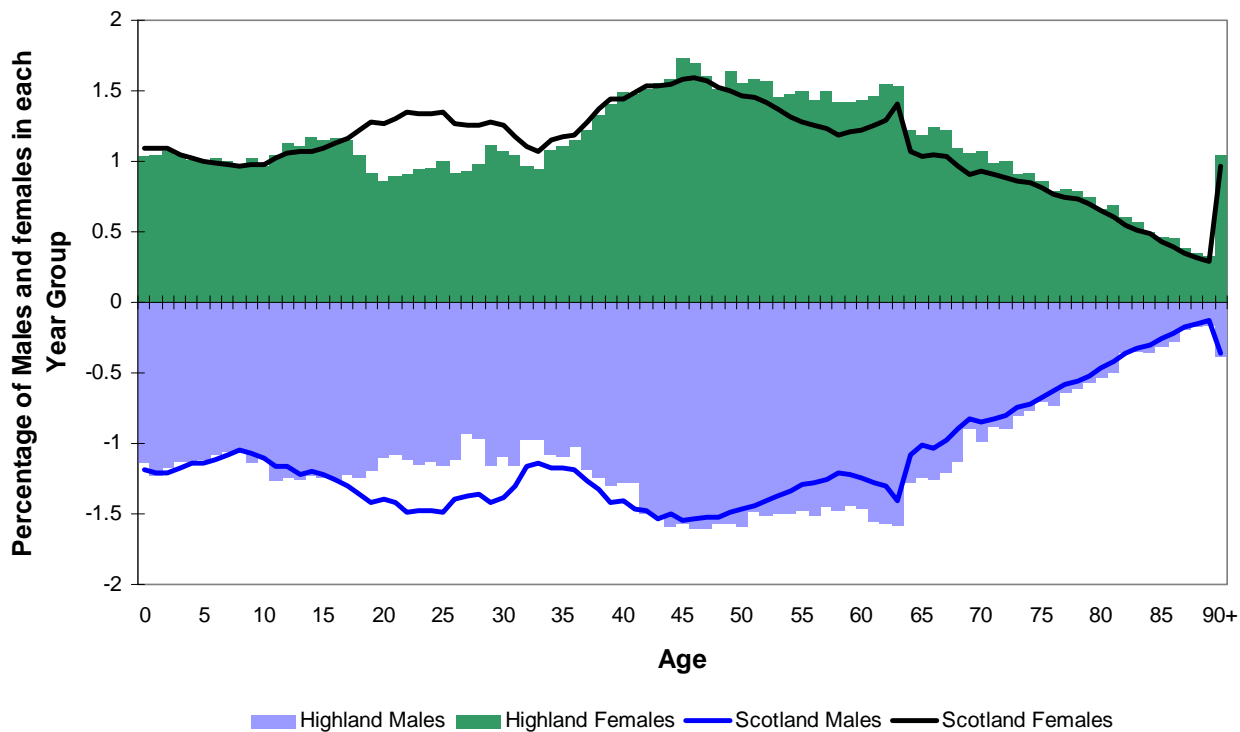
NROS use a standard cohort-component methodology which modifies the baseline population (2001 Census) by ageing it and adjusting it with information on births, deaths and migration. Migration within the UK comes from records of registrations with doctors and moves between them, and overseas migration is taken from the International Passenger Survey at ports and airports.

This is the last of the mid-year estimates to be based on the 2001 census and therefore the estimate that will have the maximum error. There is no reason to believe that the one-year change since 2009 will be subject to major error, but cumulative errors over the decade could well be significant. It will be interesting to compare the figures given in this note with those from the 2011 census when they are published.

The Population of Highland

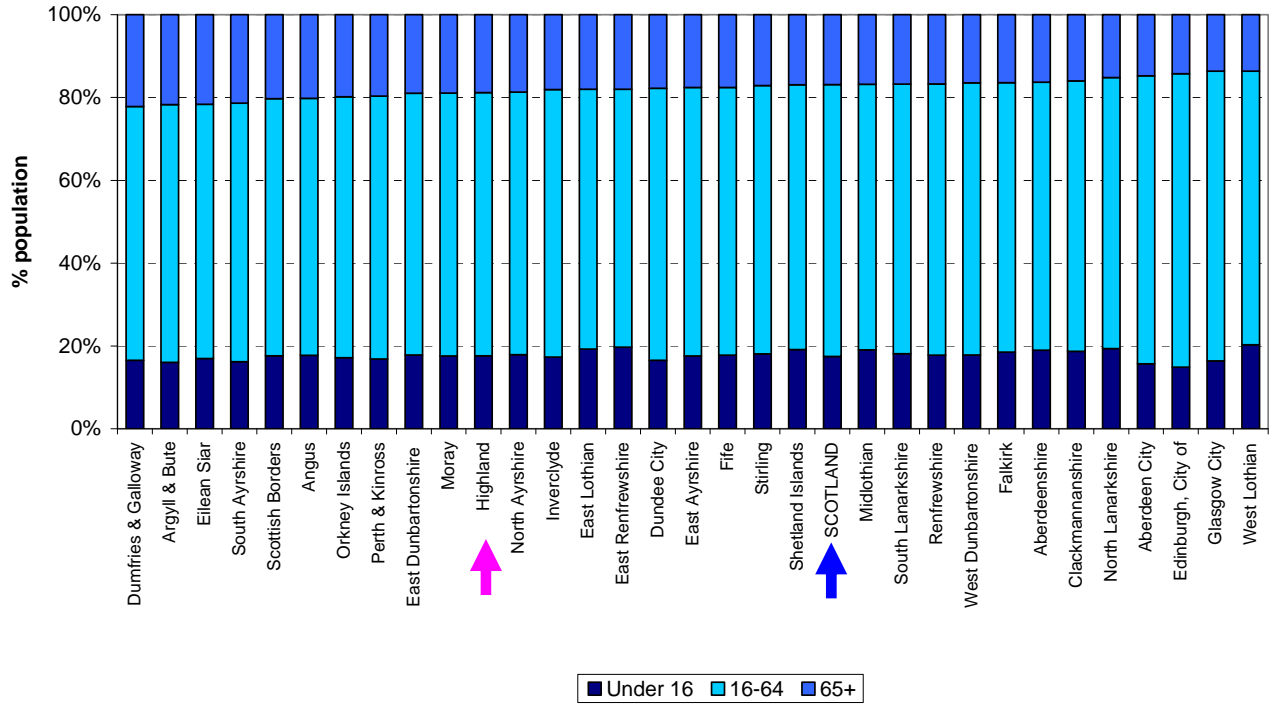
The population of Highland in mid-2010 was 221,630, an increase of 1,140 (0.52%) on the 2009 figure of 220,490. The rate of growth in Highland was fractionally lower than in Scotland overall (0.54%). The chart below gives a profile of our population by age and gender, showing how our population is dominated by people in the 40 to 65 age band. The equivalent profile for Scotland is given for comparison and the “gap” in the crucial 20 to 35 child-bearing age group for women is a graphic illustration that our population will be naturally less sustainable than that of Scotland overall.

Estimated Population of Highland by Age and Sex, 30 June 2010, and Scotland Comparison



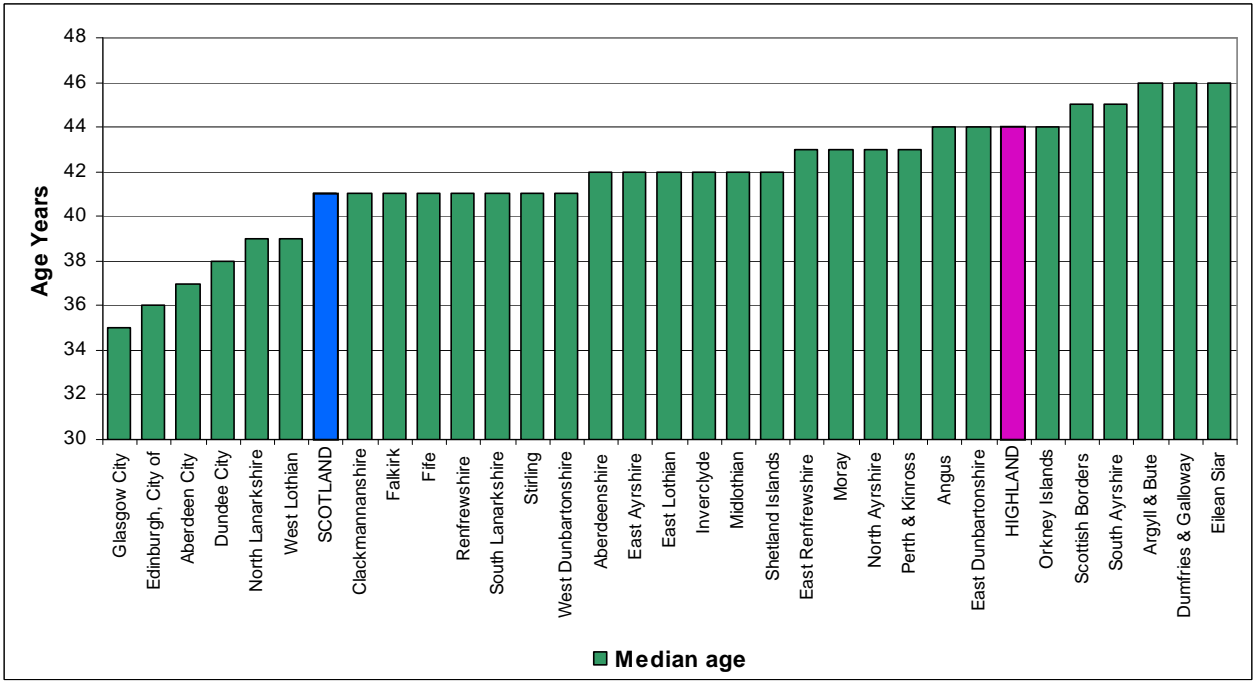
The chart below ranks council areas by the percentage of people aged over 65 and shows that Highland, in common with many other rural areas, had one of the older age profiles. Ten areas had more people aged over 65 than Highland and in general, cities tend to have fewer people aged over 65.

Age structure of Council Areas, 30 June 2010 (% under 16, 16-64 and 65+), ranked by percentage aged 65+



The net result is shown in the chart below: the median age (the age at which half the population is older and half is younger) of the population in Scotland was 41. The median age was lower in city areas (35 in Glasgow City and 36 in City of Edinburgh) than in rural areas (46 in Argyll & Bute, Dumfries and Galloway and Eilean Siar). The median age in Highland was 44, confirming that our population is one of the oldest in Scotland.

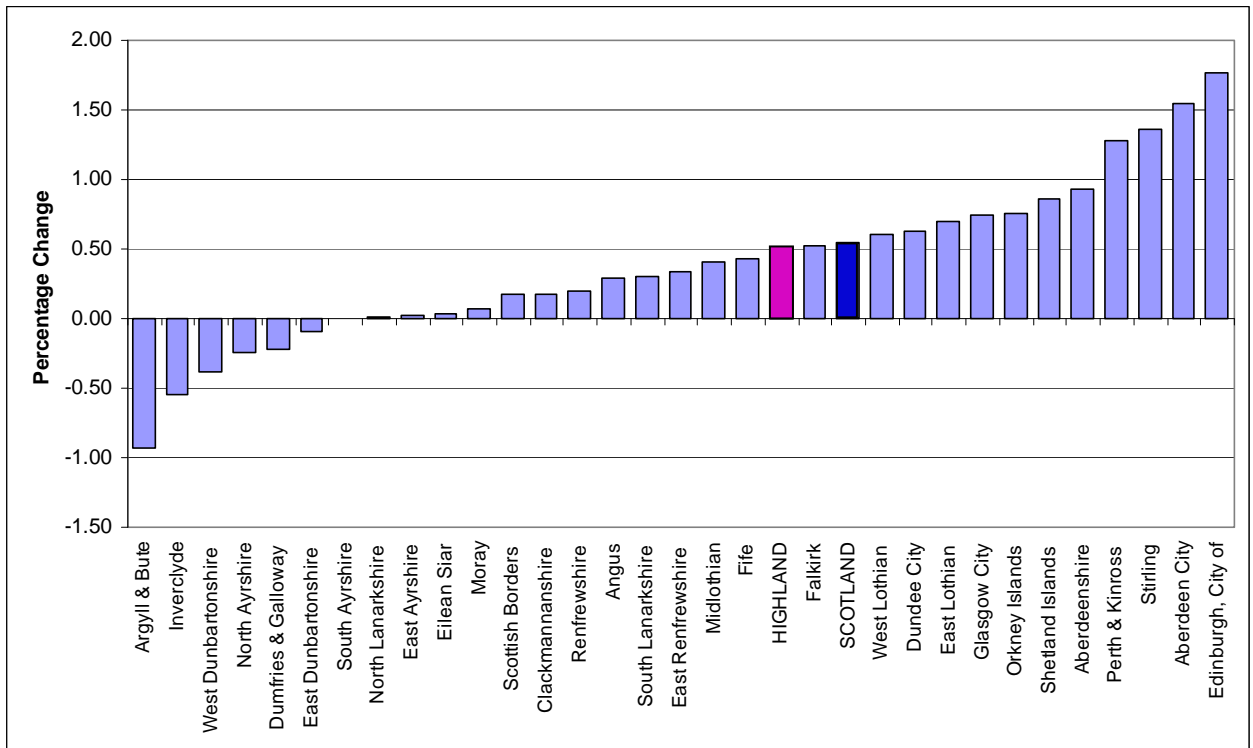
Median Age of the Population by Council Area 30 June 2010



Population Change

The chart below shows that 5 areas experienced population decline during the last year, the most significant in Argyll & Bute (-0.9%) and Inverclyde (-0.6%). Highland was mid table among those areas experiencing growth with the greatest growth in the cities of Edinburgh (1.8%) and Aberdeen (1.6%), but notable gains in the rural areas of Perth & Kinross (1.3%) and Aberdeenshire (0.9%), and both Shetland (0.9%) and Orkney (0.8%) Islands were also evident.

Percentage Change in Population, Council Areas, mid 2009 to mid 2010



Components of Change

Highland has an ageing population but, in common with much of the UK, has experienced an increase in the birth rate over the last decade. Between 2009 and 2010, births exceeded deaths (2,395 versus 2,320) giving a natural increase of 74. This was the third successive year of natural growth after a decade in which deaths exceeded births in every year. The majority of the population increase came from net inward migration (1,001), with the balance from changes in prisoners and armed forces personnel (63). The table below gives the components of migration and shows a small net loss to the rest of Scotland (in general, the long term trend is for outward and inward migration to the rest of Scotland to be roughly in balance) with the main gain from the rest of the UK. There was a net gain of 334 migrants from overseas but note it should not be assumed that these are migrants from the Accession States, as many of these migrants are classed as short term visitors (ie expected to be staying for less than 12 months) and excluded from the resident population according to international definitions.

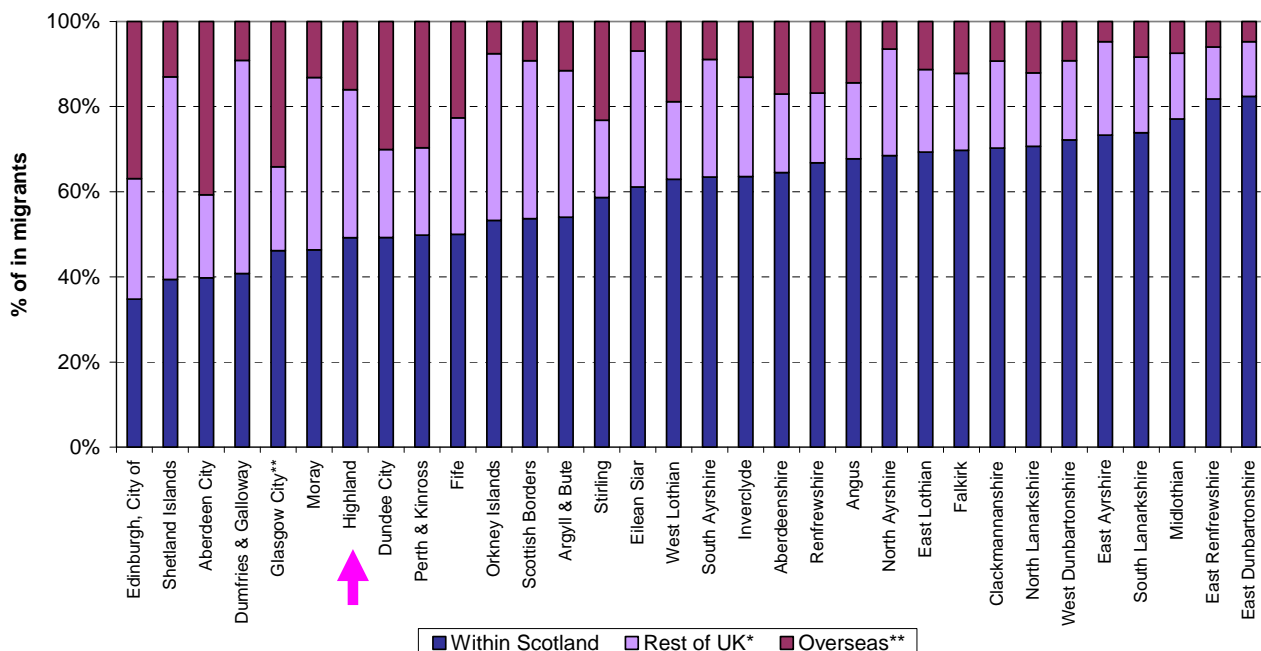
Components of Migration to / from Highland 2009-2010

	To / From Rest of Scotland	To / From Rest of UK	To / From Overseas	Total
Inward Migration	3,911	2,766	1,272	7,949
Outward migration	3,984	2,026	938	6,948
Net Migration	-73	740	334	1,001

Note that the figures in this table are not the same as some quoted earlier because of the way armed forces moves are counted

The chart below ranks council areas by the percentage of migrants from the rest of Scotland and shows that Highland had one of the lowest figures, with only six areas receiving a lower percentage. The general trend among council areas with low percentages is that city areas receive relatively large numbers of migrants from outside the UK (probably linked to universities and employment opportunities) and rural areas receive large numbers from the rest of the UK (possibly linked to lifestyle choices).

Origin of in-migrants by Council areas, 2009–2010, (ranked by increasing percentage of migrants from within Scotland)



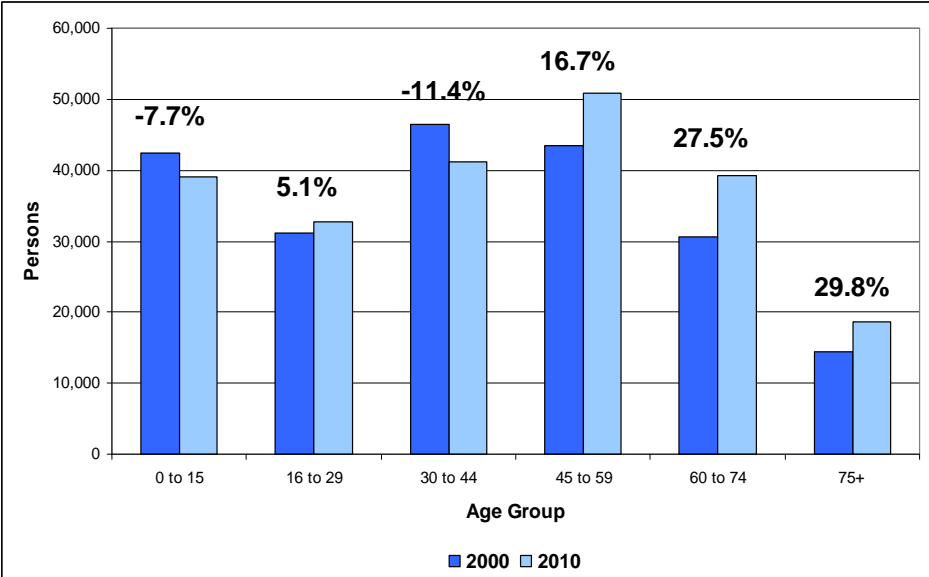
* Includes moves from the armed forces

** Includes asylum seekers

Changing Age Structure

A comparison of the 2010 age profile with that from 2000 shows that significant changes in the age profile of our population have taken place over the last decade, shown in the chart below. There has been a significant increase of over a quarter in each of the over 60 age groups and a decline in the 0 to 15 and 30 to 44 age groups (-7.7% and -11.4% respectively). However, we have also seen a welcome increase of 5.1% in the 16 to 29 age group which will have accounted for around a third of the increase we have seen in the birth numbers during the decade.

The Changing Age Structure of Highland's Population, 2000-2010



The NROS Mid 2010 Population Estimates and Report are available at [2010 population estimates](#)

Produced by the Information & Research Team; Planning & Development Service
For further information please contact:
Cameron Thomas cameron.thomas@highland.gov.uk