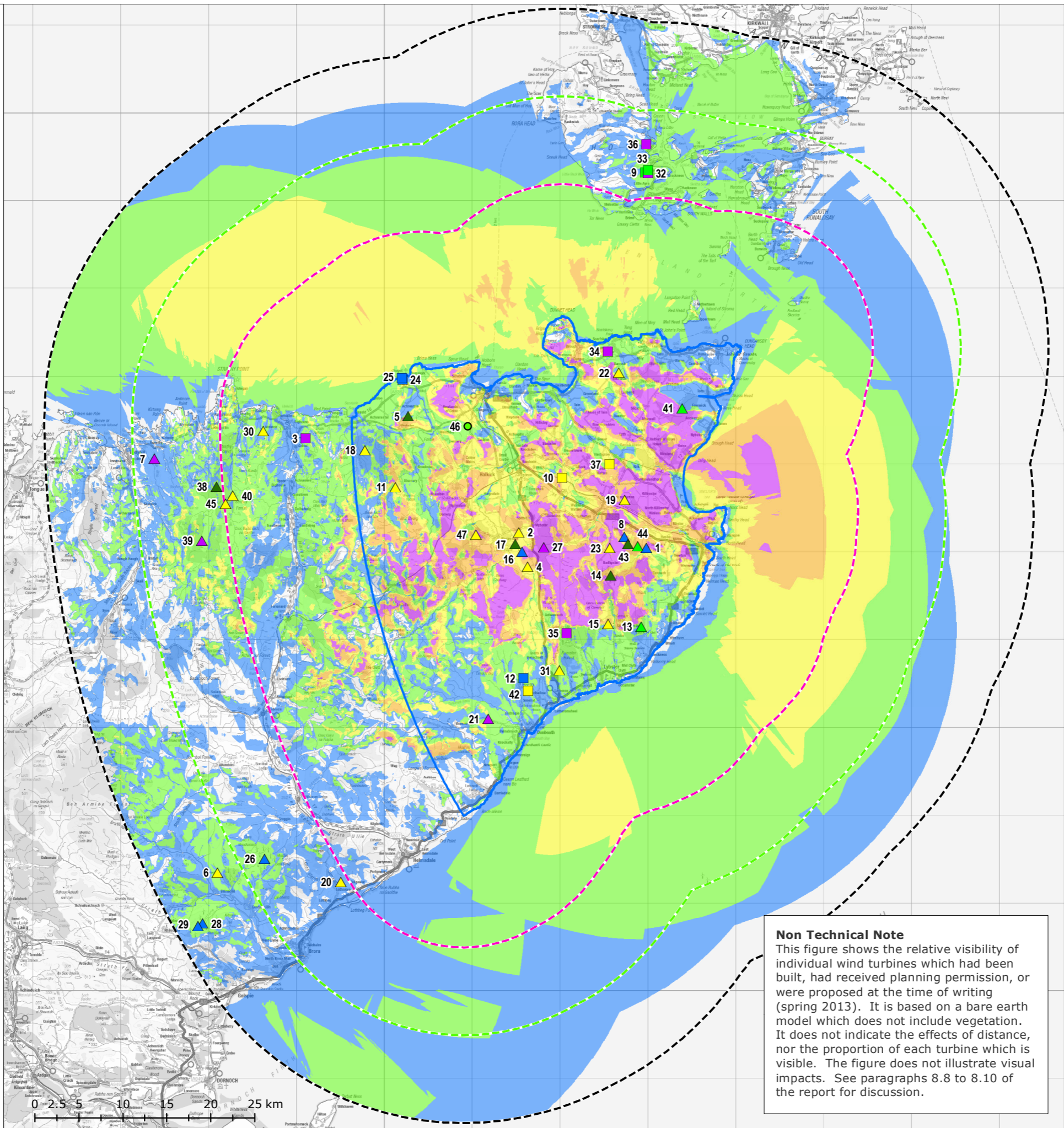


Wind Farm List

1. **Achairn**, Operational, 3 turbines, 100m to tip
2. **Achlachan Wind farm, Watten**, Design/Scoping, 6 turbines, 150m to tip
3. **Ackron Farm**, Application Submitted, 1 turbine, 78m to tip
4. **Bad a Cheo, Mybster**, Design/Scoping, 13 turbines, 150m to tip
5. **Baillie**, Under Construction, 21 turbines, 110m to tip
6. **Balnacoll**, Design/Scoping, 15 turbines, 121m to tip
7. **Bettyhill**, Application Submitted, 2 turbines, 120m to tip
8. **Bilbster**, Operational, 3 turbines, 100m to tip
9. **Binga Fea**, Consented, 2 turbines, 74m to tip
10. **Bower Quarry**, Design/Scoping, 1 turbine, 75m to tip
11. **Broubster**, Design/Scoping, 20 turbines, 127m to tip
12. **Buolfrulich**, Operational, 15 turbines, 70m to tip
13. **Burn of Whilk**, Consented, 13 turbines, 116m to tip
14. **Camster**, Under Construction, 25 turbines, 120m to tip
15. **Camster Forest**, Design/Scoping, 20 turbines, 150m to tip
16. **Causeymire - Phase 1**, Operational, 21 turbines, 101m to tip
17. **Causeymire - Phase 2**, Under Construction, 3 turbines, 101m to tip
18. **Cnoc nan Airigh, south of Reay**, Design/Scoping, 50 turbines, 150m to tip
19. **Cogle Moss, Bilbster**, Design/Scoping, 7 turbines, 100m to tip
20. **Crackaig**, Design/Scoping, 7 turbines, 96m to tip
21. **Dunbeath**, Application Submitted, 23 turbines, 125m to tip
22. **East Of Earl's Cairn Barrock**, Design/Scoping, 13 turbines, 150m to tip
23. **Flex Hill, Flex, Watten**, Design/Scoping, 3 turbines, 150m to tip
24. **Fors - Phase 1**, Operational, 2 turbines, 76m to tip
25. **Fors - Phase 2**, Operational, 4 turbines, 78m to tip
26. **Gordonbush**, Operational, 35 turbines, 110m to tip
27. **Halsary**, Application Submitted, 15 turbines, 100m to tip
28. **Kilbraur**, Operational, 19 turbines, 115m to tip
29. **Kilbraur Extension**, Operational, 8 turbines, 125m to tip
30. **Melvich**, Design/Scoping, 6 turbines, 150m to tip
31. **Nottingham Mains**, Design/Scoping, 2 turbines, 150m to tip
32. **Ore Brae Farm**, Application Submitted, 2 turbines, 67m to tip
33. **Ore Farm**, Consented, 1 turbine, 67m to tip
34. **Rattar Mains**, Application Submitted, 1 turbine, 79.6m to tip
35. **Rumster Forest, Lybster**, Application Submitted, 3 turbines, 75m to tip
36. **Rysa Lodge**, Application Submitted, 3 turbines, 67m to tip
37. **Seater Farm**, Design/Scoping, 4 turbines, 80m to tip
38. **Strathy North**, Under Construction, 33 turbines, 107m to tip
39. **Strathy South**, Application Submitted, 77 turbines, 107m to tip
40. **Strathy Wood**, Design/Scoping, 28 turbines, 150m to tip
41. **Stroupster**, Consented, 12 turbines, 86m to tip
42. **Upper Smeral Wind Cluster**, Design/Scoping, 3 turbines, 67m to tip
43. **Wathegar**, Under Construction, 5 turbines, 101m to tip
44. **Wathegar 2**, Consented, 9 turbines, 101m to tip
45. **West of Dalhalvaig**, Design/Scoping, 28 turbines, 150m to tip
46. **West Of The Rowans, Moss Of Geise**, Consented, 1 turbine, 46m to tip
47. **Westerdale**, Design/Scoping, 60 turbines, 150m to tip



The Highland Council
Cumulative Landscape
and Visual Assessment

Cumulative Zone of Theoretical Visibility of Existing, Consented, and Proposed Wind Farms

- Study Area
 - 15km Outer Study Area
 - 25km Outer Study Area
 - 35km Outer Study Area
- Wind Farm Status - Large (86-150m)**
- ▲ Operational
 - ▲ Under Construction
 - ▲ Consented
 - ▲ Application Submitted
 - ▲ Design/Scoping
- Wind Farm Status - Medium (51-85m)**
- Operational
 - Consented
 - Application Submitted
 - Design/Scoping
- Wind Farm Status - Small (35-50m)**
- Consented
- Number of Wind Farms Visible**
- 1 - 3
 - 4 - 8
 - 9 - 14
 - 15 - 19
 - 20 - 34

Technical Note
The ZTV is calculated to turbine tip height from a height of 2m above ground level.

The ZTV extents for all windfarms are based on the height of the turbines in SNH guidance (Visual Representation of Windfarms: Good Practice Guidance, SNH, 2006).

The terrain model is bare ground and derived from OS Panorama height data.

The earth curvature and atmospheric refraction have been taken into account.

Unshaded areas represent areas where either there is no theoretical visibility, or

Figure 8.4
Map Scale @ A3:1:475,000

Non Technical Note
This figure shows the relative visibility of individual wind turbines which had been built, had received planning permission, or were proposed at the time of writing (spring 2013). It is based on a bare earth model which does not include vegetation. It does not indicate the effects of distance, nor the proportion of each turbine which is visible. The figure does not illustrate visual impacts. See paragraphs 8.8 to 8.10 of the report for discussion.

