

Wind Farm List

- 1. **Achair**, Operational, 3 turbines, 100m to tip
- 5. **Baillie**, Under Construction, 21 turbines, 110m to tip
- 8. **Bilbster**, Operational, 3 turbines, 100m to tip
- 9. **Binga Fea**, Consented, 2 turbines, 74m to tip
- 12. **Buolfruch**, Operational, 15 turbines, 70m to tip
- 13. **Burn of Whilk**, Consented, 13 turbines, 116m to tip
- 14. **Camster**, Under Construction, 25 turbines, 120m to tip
- 16. **Causeymire - Phase 1**, Operational, 21 turbines, 101m to tip
- 17. **Causeymire - Phase 2**, Under Construction, 3 turbines, 101m to tip
- 24. **Forss - Phase 1**, Operational, 2 turbines, 76m to tip
- 25. **Forss - Phase 2**, Operational, 4 turbines, 78m to tip
- 26. **Gordonbush**, Operational, 35 turbines, 110m to tip
- 28. **Kilbraur**, Operational, 19 turbines, 115m to tip
- 29. **Kilbraur Extension**, Operational, 8 turbines, 125m to tip
- 33. **Ore Farm**, Consented, 1 turbine, 67m to tip
- 38. **Strathy North**, Under Construction, 33 turbines, 107m to tip
- 41. **Stroupster**, Consented, 12 turbines, 86m to tip
- 43. **Wathegar**, Under Construction, 5 turbines, 101m to tip
- 44. **Wathegar 2**, Consented, 9 turbines, 101m to tip
- 46. **West Of The Rowans, Moss Of Geise**, Consented, 1 turbine, 46m to tip

Non Technical Note

This figure shows the relative visibility of individual wind turbines which had been built or which had received planning permission at the time of writing (spring 2013), as shown on Figure 8.1. This is overlaid with the landscape character types shown on Figure 5.1. See Table 8.1 of the report for discussion.

Technical Note

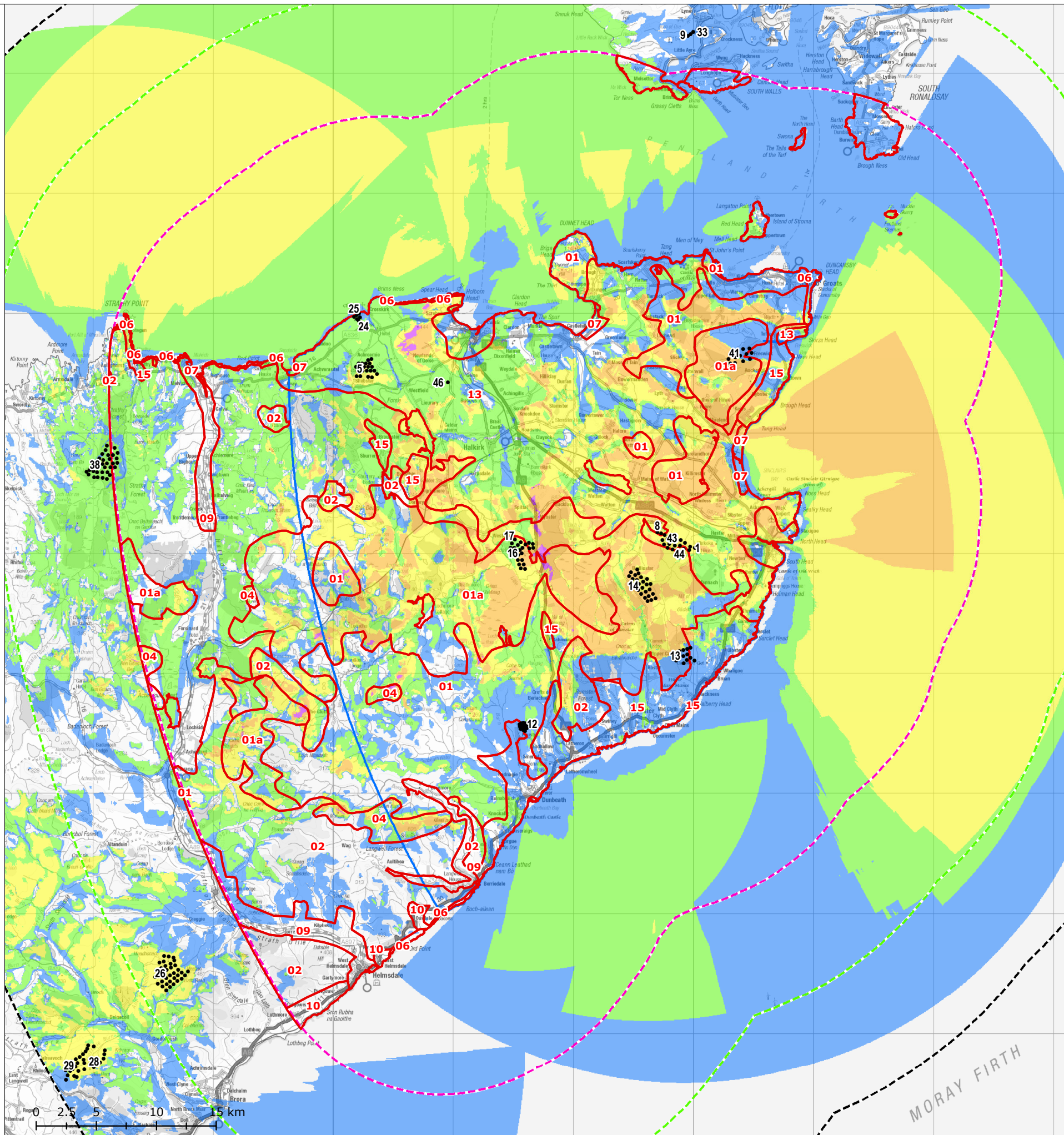
The ZTV is calculated to turbine tip height from a height of 2m above ground level.

The ZTV extents for all windfarms are based on the height of the turbines in SNH guidance (Visual Representation of Windfarms: Good Practice Guidance, SNH, 2006).

The terrain model is bare ground and derived from OS Panorama height data.

The earth curvature and atmospheric refraction have been taken into account.

Unshaded areas represent areas where either there is no theoretical visibility, or visibility has not been mapped due to distance from development (i.e. area is outwith the ZTV extent of a development).



Cumulative Zone of Theoretical Visibility of Existing and Consented Turbines and Landscape Character Types

- Study Area
 - 15km Outer Study Area
 - 25km Outer Study Area
 - 35km Outer Study Area
 - Turbine
 - Landscape Character Type
 - 01. Sweeping Moorland
 - 01a. Flat Peatland
 - 02. Moorland Slopes and Hills
 - 04. Lone Mountains
 - 06. High Cliffs and Sheltered Bays
 - 07. Long Beaches Dunes and Links
 - 09. Strath
 - 10. Coastal Shelf
 - 13. Intensive and Mixed Agriculture and Settlement
 - 15. Small Farms and Crofts
- Number of Turbines Visible**
- 1 - 19
 - 20 - 48
 - 49 - 85
 - 86 - 123
 - 124 - 172

Figure 8.5
Map Scale @ A3:1:350,000

