










Visibility of the Caithness Study Area from View Points

-  Study Area
-  15km Outer Study Area
-  25km Outer Study Area
-  35km Outer Study Area

Visibility of potential 150m turbines

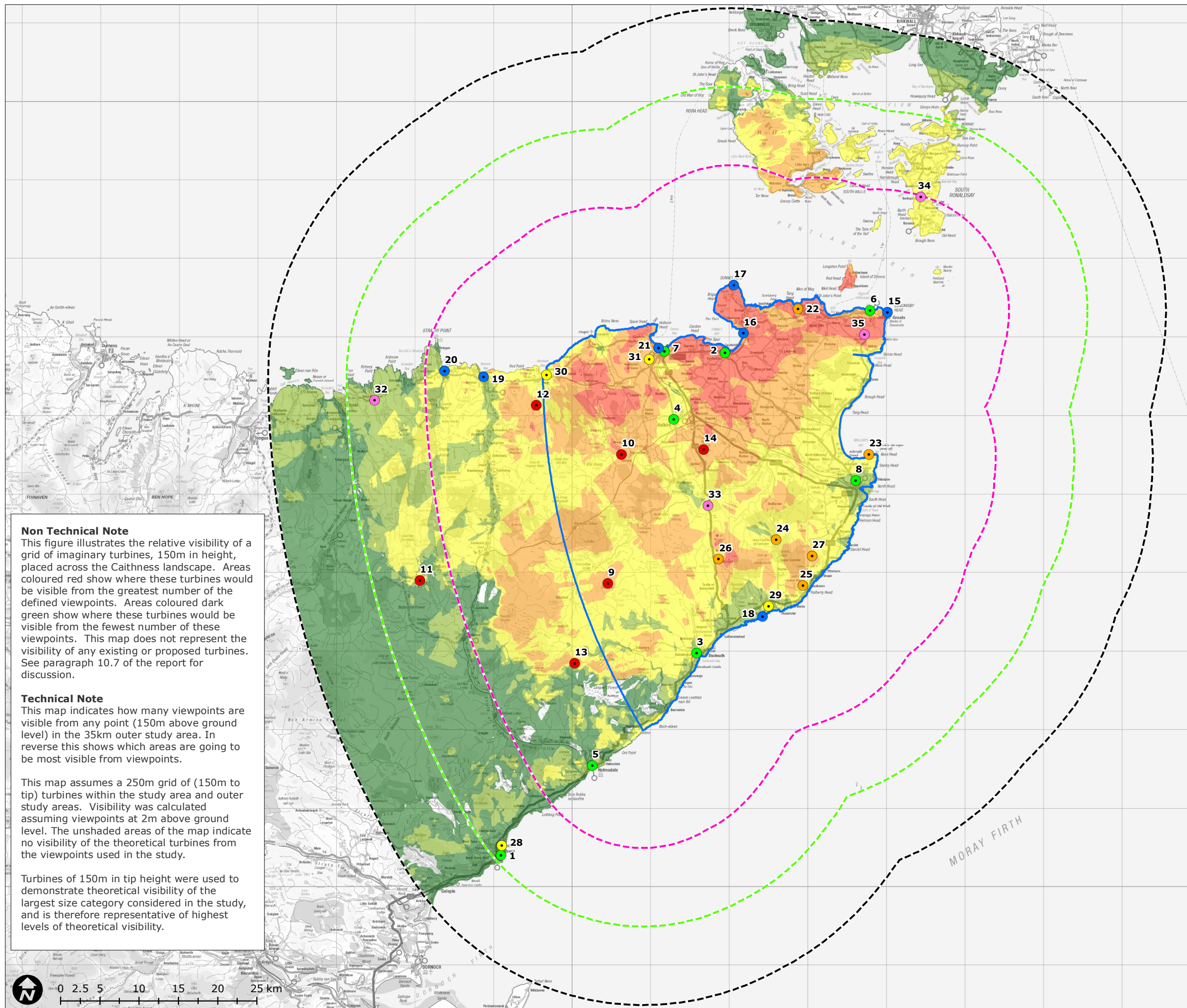
-  Visible from less View Points
-  Visible from some View Points
-  Visible from many View Points
-  Visible from most View Points
-  Visible from more View Points

View Points

-  **Settlement**
 1. Brora
 2. Castletown
 3. Dunbeath
 4. Halkirk
 5. Helmsdale
 6. John O'Groats
 7. Thurso
 8. Wick
-  **Hill**
 9. Ben Alisky
 10. Ben Dorrery
 11. Ben Griam Mor
 12. Ben Ratha
 13. Morven
 14. Spittal Hill
-  **Coast**
 15. Duncansby Head
 16. Dunnet Bay
 17. Dunnet Head
 18. Lybster Bay
 19. Melvich Bay
 20. Strathy Bay
 21. Thurso Cliffs
-  **Heritage**
 22. Castle of Mey
 23. Castle Sinclair Girmigoe
 24. Grey Cairns of Camster
 25. Hill o' Many Stanes
 26. Standing stones of Achavanich
 27. Yarrow Archaeological Trail
-  **Recreation**
 28. Brora Golf Club
 29. Lybster Golf Club
 30. Reay Golf Club
 31. Thurso Golf Club
-  **Other**
 32. A836 viewpoint, Kirtomy
 33. A9 viewpoint, Halsary
 34. A961 viewpoint, South Ronaldsay
 35. A99 viewpoint, Warth Hill

Figure 10.2

Map Scale @ A3:1:475,000



Non Technical Note

This figure illustrates the relative visibility of a grid of imaginary turbines, 150m in height, placed across the Caithness landscape. Areas coloured red show where these turbines would be visible from the greatest number of the defined viewpoints. Areas coloured dark green show where these turbines would be visible from the fewest number of these viewpoints. This map does not represent the visibility of any existing or proposed turbines. See paragraph 10.7 of the report for discussion.

Technical Note

This map indicates how many viewpoints are visible from any point (150m above ground level) in the 35km outer study area. In reverse this shows which areas are going to be most visible from viewpoints.

This map assumes a 250m grid of (150m to tip) turbines within the study area and outer study areas. Visibility was calculated assuming viewpoints at 2m above ground level. The unshaded areas of the map indicate no visibility of the theoretical turbines from the viewpoints used in the study.

Turbines of 150m in tip height were used to demonstrate theoretical visibility of the largest size category considered in the study, and is therefore representative of highest levels of theoretical visibility.