

Appendix 2 - Baseline Data Information and Maps

The information and maps in this section represent baseline data which has been taken at a Highland wide level. More localised information will be included in the Environmental Report. Date of data noted where known, otherwise should be taken as September January 2012.

Maps Contained in this Section are:

- European Bathing Beaches
- Cairngorms National Park
- Core Path Network
- Highland Cycle Network
- Population Change by Ward 1999-2009
- Most Deprived Areas in Highland
- Highland Flood Risk
- Highland Forest and Woodland Strategy
- Hydro Electric Power in Highland
- Highland Council Libraries
- Listed Buildings
- Local Nature Reserves
- National Nature Reserves
- National Scenic Areas
- Ramsar Sites
- Special Areas of Conservation
- Special Protection Areas
- Sites of Special Scientific Interest
- Sewage Treatment
- Settlement Hierarchy
- Waste Facilities – Existing & Proposed
- Waste Water Drainage Consultation Areas
- Waste Management Facilities 2009 (SEPA)
- Special Landscape Areas
- Wild Land

SEA Indicator Scoped In	Key Information	Data Source
Population and Human Health	Incidence of Coronary Heart Disease in Highland is 304 cases per 100,000 (Scotland – 306) for year ending 31 Dec 2006. 1997 figure was 396.	www.isdscotland.org
	Highland wide in 2006 22 pedestrians and 5 cyclists were killed or serious injured in road accidents. 1994-98 yearly averages are 38 pedestrian and 16 cyclist fatalities.	www.scotland.gov.uk
	82 non-domestic noise complaints received by Highland Council in 2006/7.	www.audit-scotland.gov.uk
	Scottish Crime and Victimization Survey 2006 suggests 56% of respondents thought crime to be a 'big' problem (93% considered a problem overall). Feelings of safety while walking alone after dark is often used as a proxy measure for fear of crime. Overall, just over 3 in 10 respondents (32%) reported that they felt unsafe while walking alone after dark (which was the same as the proportion that reported feeling unsafe in the 2003 survey). Just over one in 10 (12%) reported that they felt 'very unsafe'. No regional data.	www.scotland.gov.uk
	11 health-related walking groups operating in PPS area.	www.stepituphighland.org.uk
	50% of Highland population walked a least on one day in the past week with the main aim been as a mode of transport (Scotland 53%). 64% walked at least one day in the past week just for pleasure or to keep fit (Scotland 46%).	SHS Transport Across Scotland 2005-2006
	208, 914 people living in Highland.	Census 2001 http://195.173.143.171/plintra/iandr/cen/prof_hi gh.htm
	Highlands population is projected to increase by 3.6% by 2024. There is expected to be	Highland Council population Projections 2004-2024 http://www.highland.gov.uk/NR/rdonlyres/20D8

	16, 029 more people of retirement age and 5507 fewer children than in 2004. therefore the population is expected to age.	6A3A-5750-42B3-927D-21000CD24694/0/bn8popproj.pdf
	3 data zones in highland Region fall within the 5% most deprived zones in Scotland. 2 data zones fall within the top 5% least deprived.	The Scottish index of multiple Deprivation 2004 http://www.highland.gov.uk/NR/rdonlyres/796EA9D0-C754-4A2D-9799-DBB026E6A611/0/simd2004_paper.pdf
	A large proportion of Highland Region is referred to as “Fragile” in terms of remoteness and scarcity of population. An average of 8 people live per sq km, throughout the region, reducing to 2 people per sq km in some parts.	Highland Council Definition of Fragile Rural areas in Highland. http://www.highland.gov.uk/NR/rdonlyres/267DCD97-B9B0-4BF3-BE1C-15D662186C48/0/fragile_paper.pdf
	45% of Highland households are within 3mins. walking distance of a bus stop (Scotland 55%) but with 20% having frequency of services of less than 1 bus per hour (Scotland 4%). 12% of the population in Highland had used a train in the past month (Scotland 19%). <i>SHS Transport Across Scotland 2005 – 2006.</i>	SHS Transport Across Scotland 2005 - 2006
Material Assets	Key Information	Data Source
Housing	There are 13, 329 housing units available in Highland between 2007 -2011	The Highland Council housing land Audit 2006 http://www.highland.gov.uk/NR/rdonlyres/B3104D9D-838A-42F1-B679-AE682078AE23/0/briefingnote24.pdf
House Sales	A quarter of all house sales in highland are to people from out with the area.	Highland Council Paper – House Sales – What do they tell us about migration in Highland. http://www.highland.gov.uk/NR/rdonlyres/7C0C7DCA-0AB6-4EAE-B6C6-C33A0E03BA52/0/bn2.pdf
Libraries	42 establishments containing a library	Highland Council Housing and Property data files
Vacant homes	There are 93 211 households in highland region and of these just under 10% are vacant or second/holiday homes.	Highland Council Household Estimates (2004) http://www.highland.gov.uk/NR/rdonlyres/ADF1B5B3-1C8D-4C34-97AE-F5B3A35DA583/0/bn3.pdf General registrar for Scotland household Estimates 2006: http://www.gro-scotland.gov.uk/statistics/publications-and-data/household-estimates-statistics/household-estimates-for-scotland-2006/index.html
Number of degraded dwellings	Number of degraded dwellings in each building condition	Highland Council Housing and Property data files

	<p>category:</p> <p>A - Good - Performing well and operating efficiently</p> <p>B - Satisfactory - Performing adequately but showing minor deterioration</p> <p>C - Poor - Showing major defects and / or not operating adequately</p> <p>D – Bad - Life expired and / or serious risk of imminent failure</p>	
	Supply of Affordable housing	Highland Council Affordable housing policy: http://www.highland.gov.uk/NR/rdonlyres/3098EF9A-20A2-46A4-ACD4-B05FEBFCBE0/0/dppgaffordablehousing.pdf
Renewable Energy Installations	Renewable Energy Installation account for 536.25kW of Highland Council Energy use.	Highland Council Energy Management and Performance Plan.
Water Treatment Works	Number of water treatments works in Highland. Investment in future.	<p>Scottish Water Strategic Asset Capacity and Development Plan (2006); http://www.scottishwater.co.uk/portal/page/portal/SW_PAGE_GROUP_PS_ADMIN/SW_PUB_SCHEME_ADMIN_HOLDING/TAB65572/RELEASED%20STRATEGIC%20CAPACITY%20AND%20DEVELOPMENT%20PLAN%20MARCH%202006%20V2.pdf</p> <p>Scottish Waters Vision for Highlands 2010; http://www.scottishwater.co.uk/portal/page/portal/SWE_PGP_INVESTMENT/SWE_PGE_INVESTMENT/SWE_INV_HIGH_2010</p>
Footpath networks	Proportion of population living within 200m of a footpath.	The Highland Councils Core Path Plan. http://www.highland.gov.uk/leisureandtourism/what-to-see/countrysideaccess/corepathplans.htm
Open Space	Proportion of population who live within 200m of open space	The Highland Council Open Space Audit
Cycle paths	Number of designated cycle routes in Highland	Sustrans National Cycle Network Map; http://www.sustrans.org.uk/webfiles/general/sustrans_2008_ncn_map.pdf
Listed Buildings	A Listed - 186 B Listed - 1667 C(S) Listed - 1161	Historic Scotland GIS Dataset
Schedule Monuments	Total Number of Schedule Monuments in Highland is 1237	Historic Scotland GIS Dataset
Inventory Gardens and Designed Landscapes	Total Number of Inventory Gardens and Designed Landscapes	Historic Scotland GIS Dataset
Climatic Factors	Key Information	Data Source
Reduce vulnerability to effects of climate	Areas affected by flooding/costs (sea)	UKCP09 The climate of the United Kingdom and recent trends.

change.	Areas affected by flooding (river) Priority Species Impact on Natural Resources Impact on Provision of Services/cost to Council	http://ukclimateprojections.defra.gov.uk SEPA flood maps www.sepa.org.uk SCCIP pilot project LCLIP. www.sccip.org.uk Marine Climate Change Impacts Partnership.
Reduce need for energy.	Highland Council Energy Consumption is 22, 250GWH per annum.	Highland Council Energy Management and Performance Plan http://www.highland.gov.uk/NR/rdonlyres/4EA59619-0EF5-42CC-9889-7EDA9F997E8E/0/emppfeb06.pdf
Reduce air pollution to levels that do not damage natural systems, including contribution to climate change.	Carbon Footprint – 11.73-11.99 tonnes CO ₂ per capita	Stockholm Environment Institute. <i>Taken from the report “A Right Climate for Change”, (2007) Local Footprints Project and Stockholm Environmental Institute.</i> Climate Change (Scotland) Act 2009 http://www.scotland.gov.uk/Topics/Environment/climatechange/scotlands-action/climatechangeact
Number of Air Quality Management Areas (AQMA) in Highland	None at present	http://www.scottishairquality.co.uk/
Reduce the need to travel.	Number of employees travelling by car. Availability of video conferencing material. Staff training and awareness Number of School Travel Plans Number of Office Travel plans	This should be monitored through the Highland Council green travel plan which is currently under development, Local Transport Strategy http://www.highland.gov.uk/yourenvironment/roadsandtransport/transportplanning/localtransportstrategy.htm
Increase potential use of public transport.	Number of staff choosing public transport for commuting and business travel. Staff training and awareness. Number of School Travel plans Number of Office Travel Plans	This should be monitored through the Highland Council green travel plan which is currently under development, Local Transport Strategy http://www.highland.gov.uk/yourenvironment/roadsandtransport/transportplanning/localtransportstrategy.htm
Increase the proportion of energy from renewable sources	Renewable Energy installations in Highland Council Building is 1200KWh Promotion of renewable energy.	Highland Council Energy Management and Performance Plan http://www.highland.gov.uk/NR/rdonlyres/4EA59619-0EF5-42CC-9889-7EDA9F997E8E/0/emppfeb06.pdf Highland Council Renewable Energy Strategy http://www.highland.gov.uk/yourenvironment/planning/energyplanning/renewableenergy/highlandrenewableenergystrategy.htm Community Benefits from Renewables http://www.highland.gov.uk/livinghere/communityplanning/communitybenefit/

Improve the use of sustainable building techniques	Promotion of Sustainable design in the Community.	Designing for Sustainability in the Highlands http://www.highland.gov.uk/yourenvironment/planning/developmentplans/developmentplanpolicyguidance/designingforsustainability.htm Highland Housing Fair: http://www.highland.gov.uk/yourenvironment/sustainabledevelopment/sharingthegreenagenda/highlandhousingfair.htm
Protect and enhance the connectivity of the green network	Green Network mapping	Green Networks: Supplementary Guidance http://www.highland.gov.uk/yourenvironment/planning/developmentplans/developmentplanpolicyguidance/GreenNetworksSupplementaryGuidance.htm
Water	Key Information	Data Source
Avoid impact to and where possible enhance the water environment.	Number of rivers/lochs in good Ecological Condition.	EU Water Framework Directive. Highland Biodiversity Action plan SEPA Scottish Water
Flooding likelihood	Vulnerability of Highlands communities to flooding. SEPA Indicative River and Coastal Flood Map (Scotland)	Scottish Government: the Future of Flood risk Management in Scotland: http://www.scotland.gov.uk/Topics/Environment/Water/Flooding/Consultation UKCIP09: www.ukcip.org.uk/ www.sepa.org.uk/pdf/flooding/planning_flooding.pdf
Existing flood defences		Office of Science and technology (2005) Foresight report: <i>Future Flooding Scotland</i> . http://www.foresight.gov.uk/Previous_Projects/Flood_and_Coastal_Defence/Reports_and_Publications/Scotland/final_scotland.pdf
Pumping Stations and Sewage Works		Scottish Water (2006) Strategic Asset Capacity and Development Plan; http://www.scottishwater.co.uk/portal/page/portal/SW_PAGE_GROUP_PS_ADMIN/SW_PUBLIC_SCHEMA_ADMIN_HOLDING/TAB65572/RELEASED%20STRATEGIC%20CAPACITY%20AND%20DEVELOPMENT%20PLAN%20MARCH%202006%20V2.pdf
Water Quality	Water Quality in water dependant protected areas (e.g. Special Areas of Conservation)	SEPA Water Quality Classifications: www.sepa.org.uk/water/river_basin_planning/classification_results_2010.aspx Scottish Executives Bathing Water Strategy: http://www.scotland.gov.uk/Publications/2006/03/23151924/0 Scottish Executives Statistics Environment: European Directive 76/160/EEC, which sets mandatory bacteriological and other health-

		<p>related standards for bathing waters in Europe.</p> <p>Monitoring and classification system for water bodies (Water Framework Directive) – www.sepa.org.uk/water/monitoring_and_classification.aspx</p> <p>River Basin Management Plan for Scotland & draft Area Management Plan – www.sepa.org.uk/water/river_basin_planning/early_basin_planning_work.aspx</p> <p>River Basin Management Plan interactive map: http://gis.sepa.org.uk/rbmp</p>
Hydro-power	80 Hydro-powered stations in Highlands and islands	http://www.hi-energy.org.uk/hydroenergy.html
Ground Water and River Levels		Centre for Hydrology and Ecology. National Water Archive; http://www.ceh.ac.uk/data/NWA.htm
Soil & Waste	Key Information	Data Source
Minimise waste and re-use or recover it by recycling, composting or energy recovery.	<p>Waste into landfill: The proportion of waste in Highland being put into landfill. % of recycling/composting.</p> <p>Currently 183 recycling points in Highland.</p> <p>26% of waste in highland recycled.</p> <p>77393 tonnes waste to landfill.</p> <p>Target of 70% recycling by 2025</p>	<p>HC Waste Data Report - http://www.highland.gov.uk/NR/rdonlyres/F6627158-2F0E-4C68-8250-9475DA7B8999/0/20062007AnnualWasteDataReport.pdf</p> <p>SEPA Waste Data Digest Series - http://www.sepa.org.uk/nws/data/data_digest.htm</p> <p>Audit Scotland Annual Statutory Performance Indicators reports - http://www.audit-scotland.gov.uk/performance/council</p> <p>Zero Waste Plan 2010 - http://www.scotland.gov.uk/Topics/Environment/waste-and-pollution/Waste-1/wastestrategy</p> <p>SEPA Information on recycling rates – http://www.sepa.org.uk/waste/waste_data/waste_data_reports/landfill_allowance_scheme.aspx</p>
Erosion	Distance and numbers of path where erosion or poor path construction has or is reducing soil quality and quantity. No data available but possible monitoring of core paths in the future can be used.	The Highland Council Core Paths Plan (to be adopted in summer 2008)
Contaminated Land	<p>Number of sites of Contaminated land in Highland</p> <p>Area of Contaminated Land (ha) in Highland</p>	Highland Council Contaminated Land Database.
Soil Quality	Key indicators of soil quality	Soil Indicators for Scottish Soils http://sifss.macaulay.ac.uk

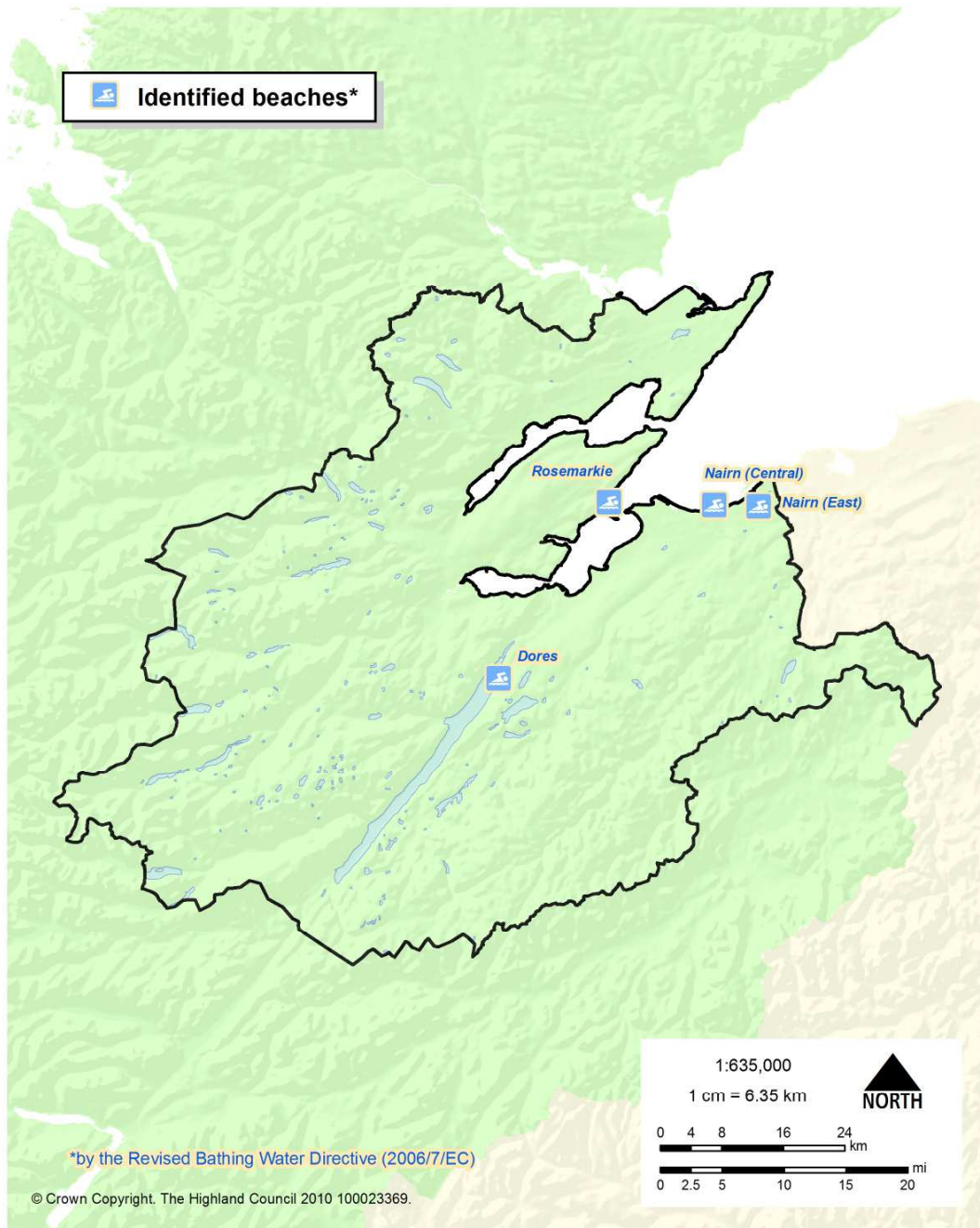
Agricultural Land	Land use, employment and production information. Crofting in Highland	National Farmers Union Scotland; http://www.nfus.org.uk/facts_index.asp Crofters Commission Annual report 2006/07; http://www.crofterscommission.org.uk/documents/croft-englishfinalreport0607.pdf
Waste Management Facilities	Additional waste management capacity required in the Highland Council Area	Zero Waste Plan 2010 Annex B http://www.scotland.gov.uk/Topics/Environment/waste-and-pollution/Waste-1/wastestrategy/annexb/table
Carbon Rich Soils	Location of Carbon Rich Soils in the Inner Moray Firth	James Hutton Institute
Cultural Heritage	Key Information	Data Source
Value and protect diversity and local distinctiveness.	Townscape Quality	A96 Development Framework: http://www.highland.gov.uk/NR/rdonlyres/7297B608-64F3-478C-AC10-4CEABF3595C1/0/A96DevelopmentFramework.pdf Inverness City Vision: http://www.highland.gov.uk/NR/rdonlyres/6E3C5D49-3E28-49D9-AC41-711ADDABA265/0/InvernessCityVision.pdf
	There are 52 areas in highland listed in the inventory of Gardens and Designated Landscapes.	www.snh.org.uk SNH (2004) facts and figures.
Landscape	Key Information	Data Source
Retain and improve quality and quantity of publicly accessible open space.	Landscape Character	Scottish Natural Heritage: <i>Overview of Scotland's national programme of Landscape Character Assessment (2004)</i> Scottish Natural Heritage (1998) <i>Inner Moray Firth Landscape Character Assessment</i> . Scottish Natural Heritage (1999) <i>Ben Alder, Ardverikie and Creag Meagaidh Landscape Character Assessment</i> Scottish Natural Heritage (1998) <i>Inverness District Landscape Character Assessment</i> Scottish Natural Heritage (1998) <i>Moray and Nairn Landscape Character Assessment</i> Scottish Natural Heritage (1999) <i>Ross and Cromarty Landscape Character Assessment</i> .
National Scenic Areas	3 National Scenic Areas found in Inner Moray Firth Area	Special Qualities of NSAs Report http://www.snh.gov.uk/protecting-scotlands-nature/protected-areas/nationaldesignations/nsa/special-qualities/

Wild Land	Areas of Wild Land	Wild Land Areas http://www.snh.gov.uk/protecting-scotlands-nature/looking-after-landscapes/landscape-policy-and-guidance/wild-land/mapping/
Coast	Biodiversity Number, type and specification of harbours in Highland. Coastal Classification	Highland Biodiversity Action Plan www.highland.gov.uk http://www.highland.gov.uk/yourenvironment/roadsandtransport/harbours/ THC Coastal Development Strategy www.highland.gov.uk
Impact of Built development	Visual impact of build development	SNH's visual indicator of built development and land use change – http://www.snh.gov.uk/publications-data-and-research/trends/scotlands-indicators/natural-heritage-indicators
Special Landscape Areas	There are 6 SLAs within or adjacent to the Plan area.	SLA Citations www.highland.gov.uk/developmentplans
Biodiversity, Flora and Fauna	Key information	Data Source
Protect, enhance and where necessary restore designated wildlife sites and protected species	There are currently 12 RAMSAR sites, 90 SAC's, 46 SPA's, 368 SSSI's, 12 NNR's, 1 LNR in Highland	http://www.snh.gov.uk/publications-data-and-research/snhiinformation-service/sitelink/ https://data.nbn.org.uk/
	The Cairngorms National Park extends into Badenoch and Strathspey which is within the Highland Council area and shares a boundary with the plan area	www.cairngorms.co.uk
Improve biodiversity, avoiding irreversible losses.	Highland region supports 192 of the 238 priority species in Scotland and 40 of the 42 priority habitats. 455 of the priority species of conservation importance are found in Highland.	Highland Biodiversity Action Plan www.highlandbiodiversity.com Habitat and Birds Directive – Annex 1
Provide appropriate opportunities for people to come into contact with and appreciate wild life and wild places.	Proportion of population living within 200m of a footpath. The core paths plan is yet to be completed but this information will be added to the baseline data when the plans are adopted, Summer 2008.	The Highland Councils Core path plan.
	Site condition monitoring database being produced by SNH will provide information on the condition of designated sites, 2000-2005, including recreational pressures but this	SNH

	database is not yet operational to provide this data.	
Fisheries and Aquaculture	Natural Resources of the Seas around Highland.	http://www.highland.gov.uk/yourenvironment/agriculturefisheriesandforestry/fisheriesandaquaculture/
Forest and Woodland		The Highland Forest and Woodland strategy. http://www.highland.gov.uk/yourenvironment/agriculturefisheriesandforestry/treesandforestry/highland-forest-and-woodland-strategy.htm Forestry Commission Scotland; http://www.forestry.gov.uk/scotland
Green networks	Mapped extent and mapping methodology for identification of green networks in Highland	Green Networks: Supplementary Guidance www.highland.gov.uk/developmentplans .

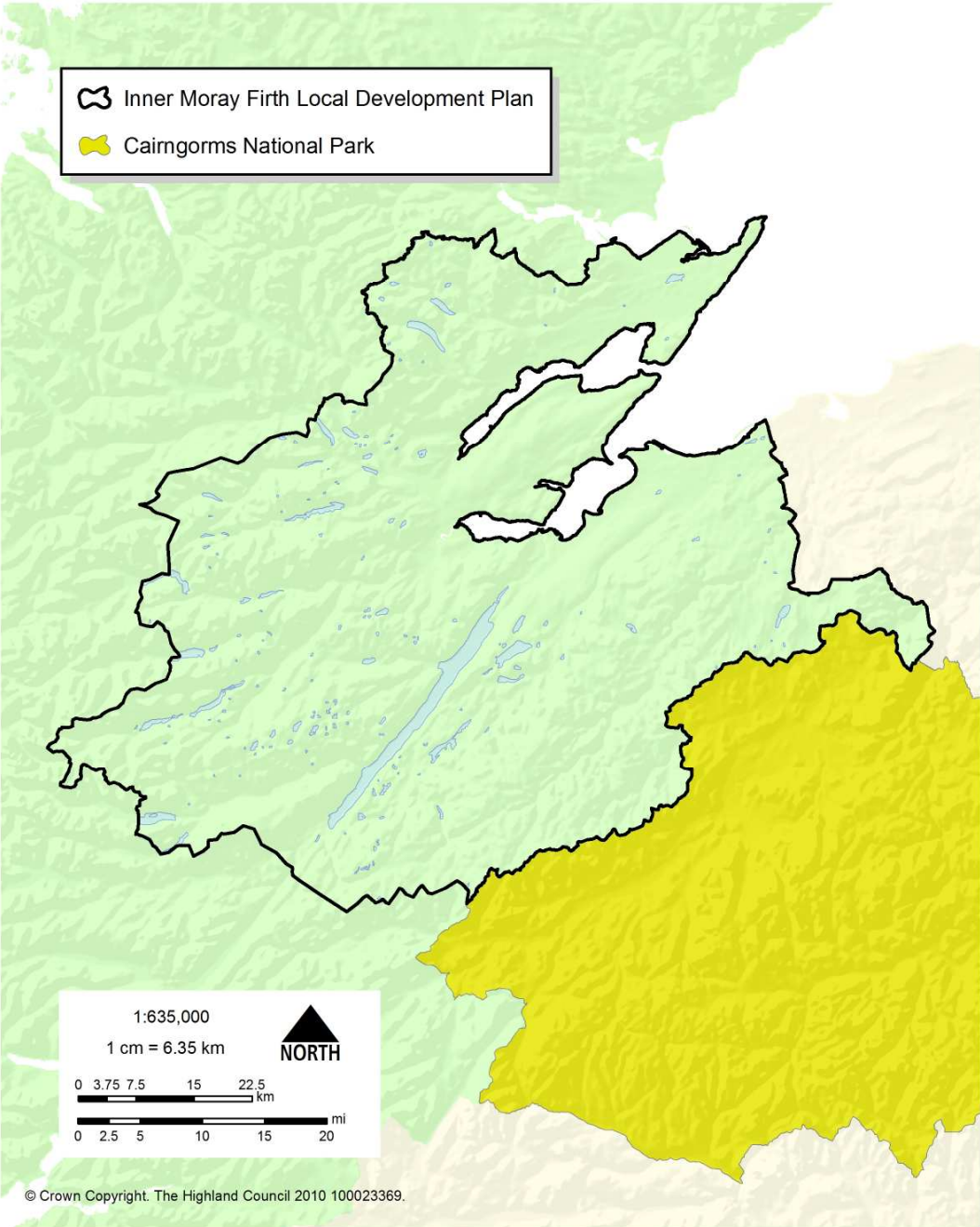
Inner Moray Firth Local Development Plan

European Bathing Beaches



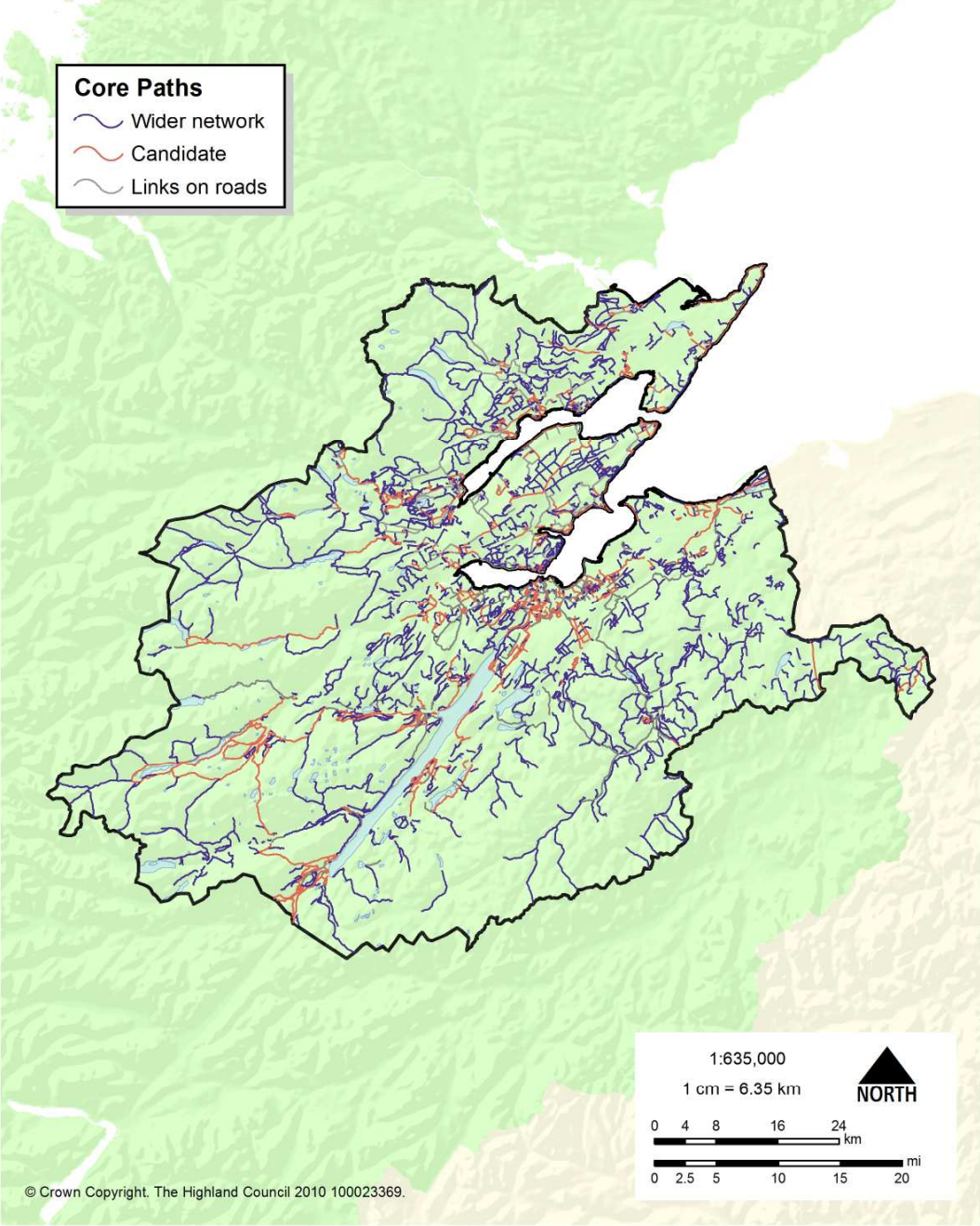
Inner Moray Firth Local Development Plan

Cairngorms National Park



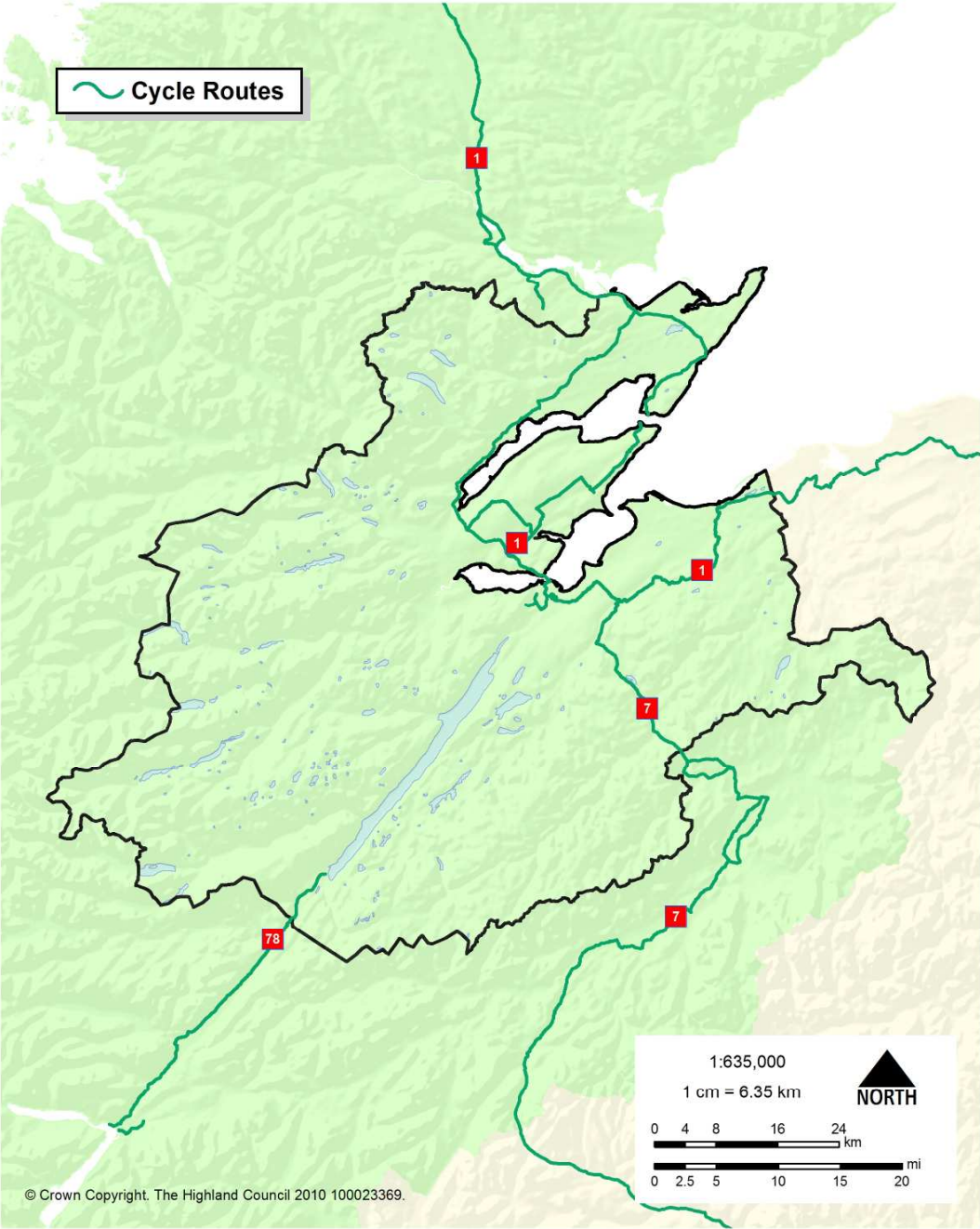
Inner Moray Firth Local Development Plan

Core Path Network



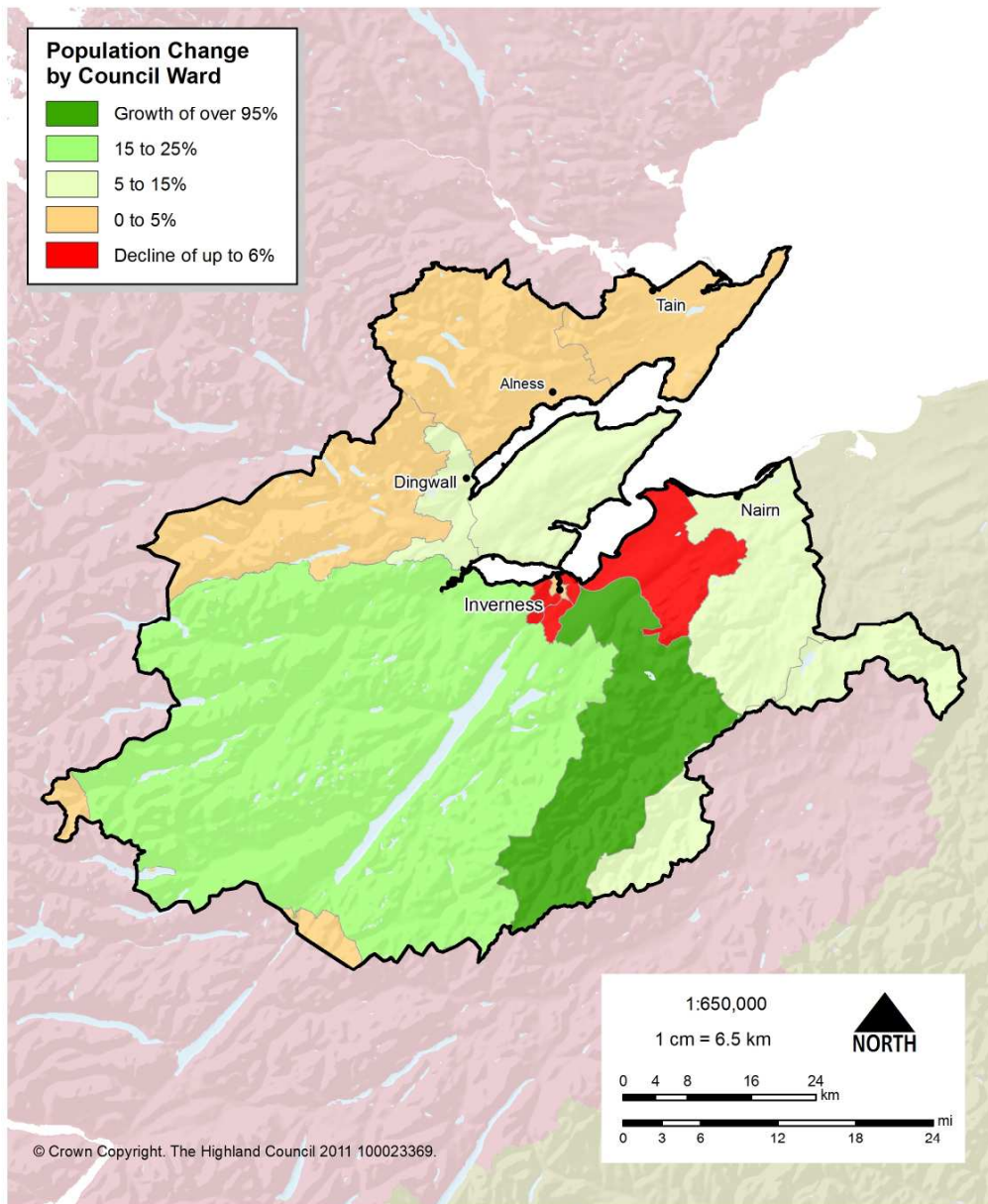
Inner Moray Firth Local Development Plan

Cycle Route Network



Inner Moray Firth Local Development Plan

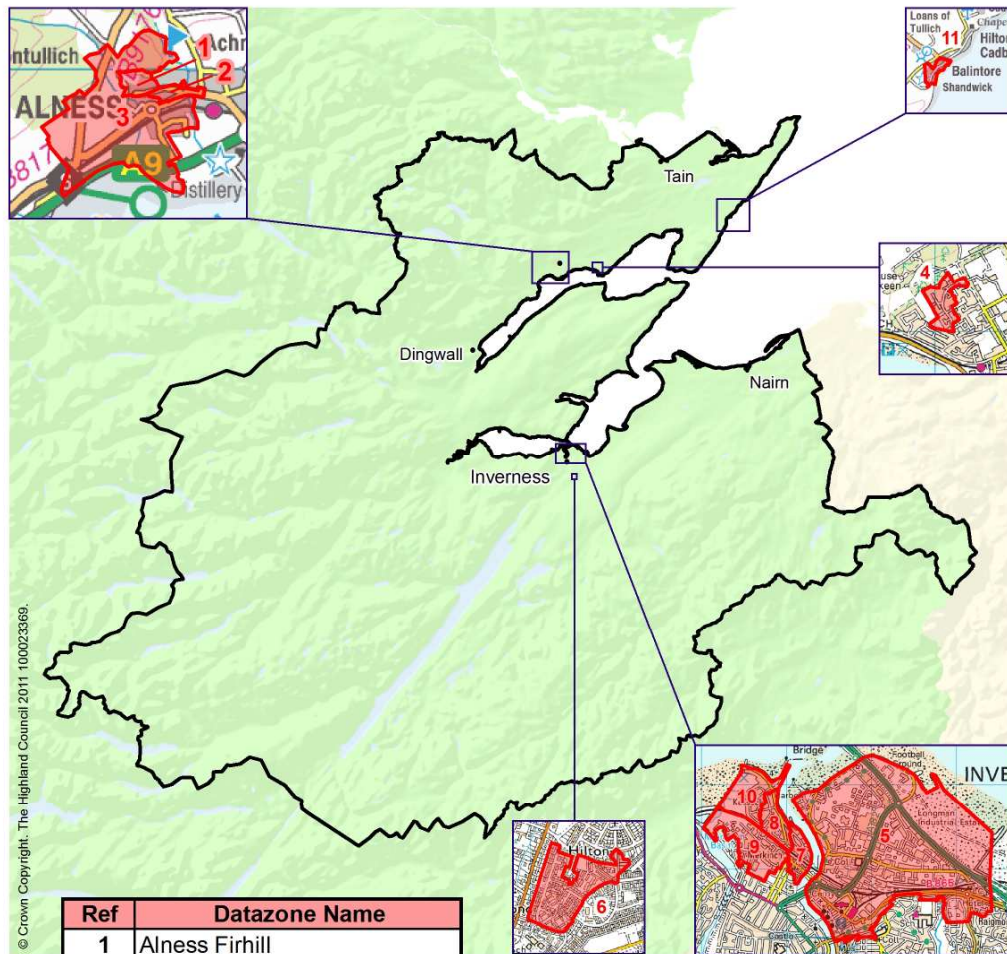
Population Change 1999 to 2009



Inner Moray Firth Local Development Plan

Most Deprived Areas

Scottish Index of Multiple Deprivation 2009

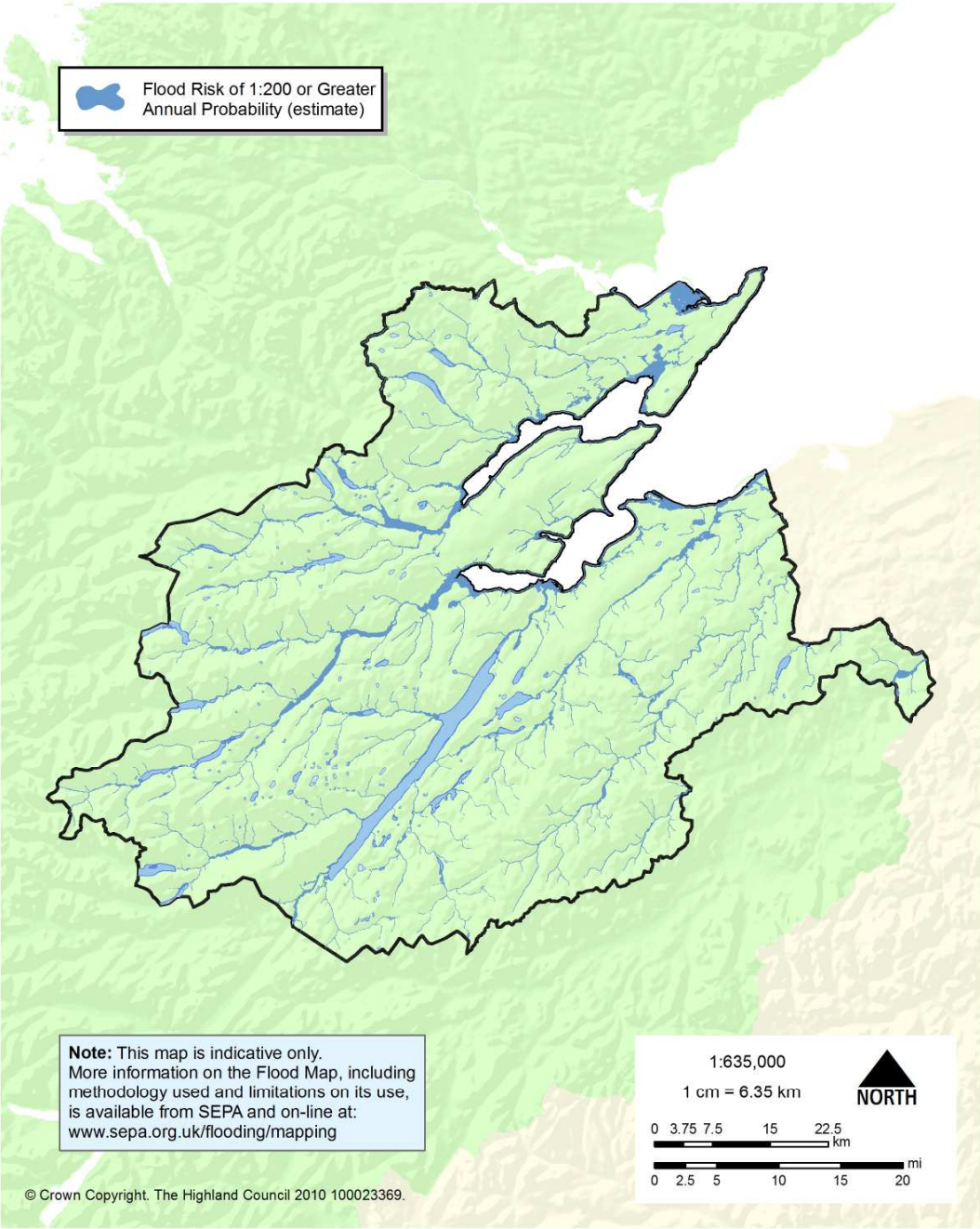


Ref	Datazone Name
1	Alness Firhill
2	Alness Kirkside
3	Alness Teaninich
4	Invergordon Strath Avenue
5	Inverness Central & Longman
6	Inverness Hilton West
7	Inverness Merkinch East
8	Inverness Merkinch North
9	Inverness Merkinch South
10	Inverness South Kessock
11	Seaboard South

Eleven of the Sixteen datazones in Highland which are in the 15% most deprived datazones in Scotland, are within the Inner Moray Firth Local Development Plan Area. They are classed as multiply deprived areas, listed here in alphabetical order.

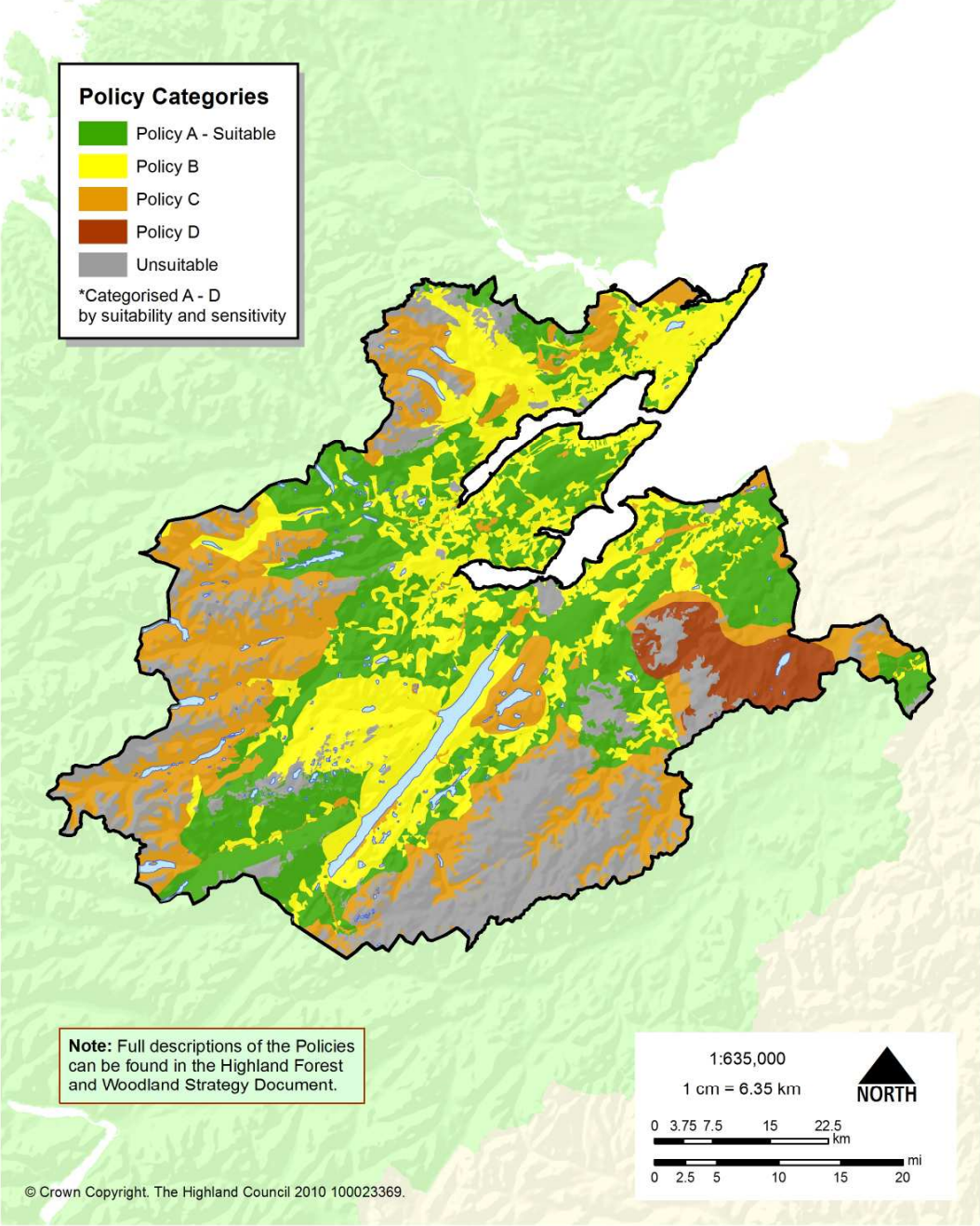
Inner Moray Firth Local Development Plan

Flood Risk – Fluvial and Coastal



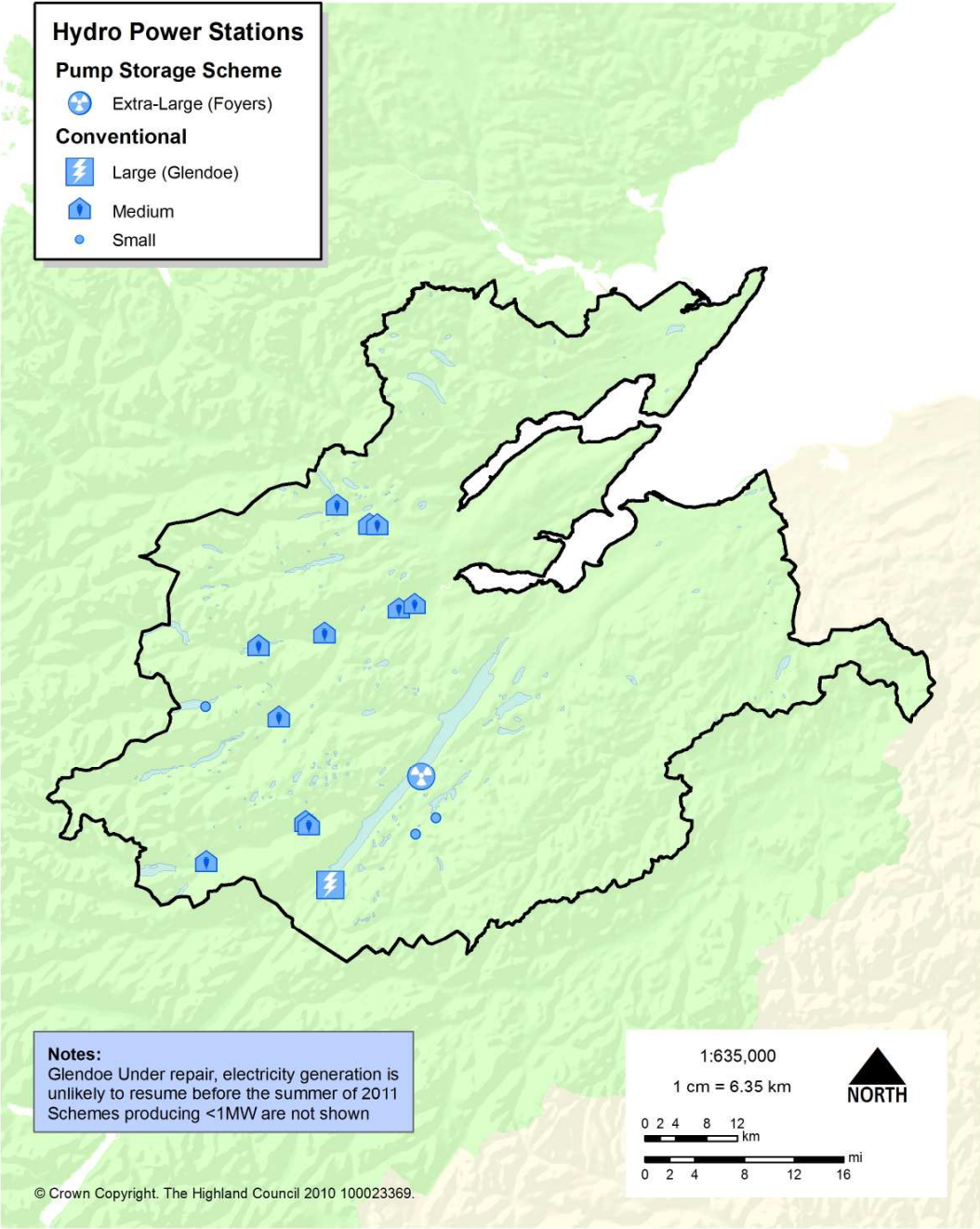
Inner Moray Firth Local Development Plan

Forest and Woodland Strategy



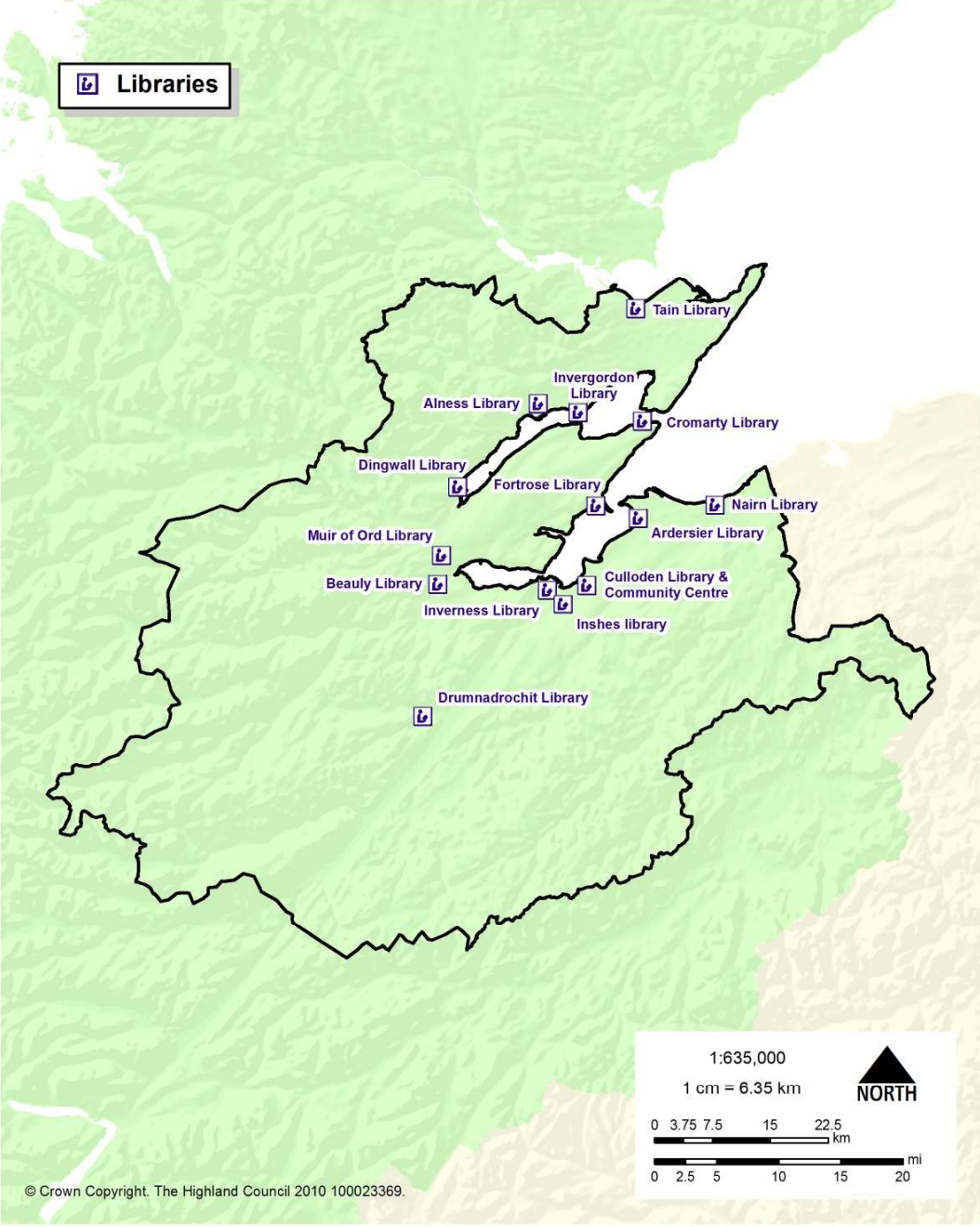
Inner Moray Firth Local Development Plan

Hydro Electric Power



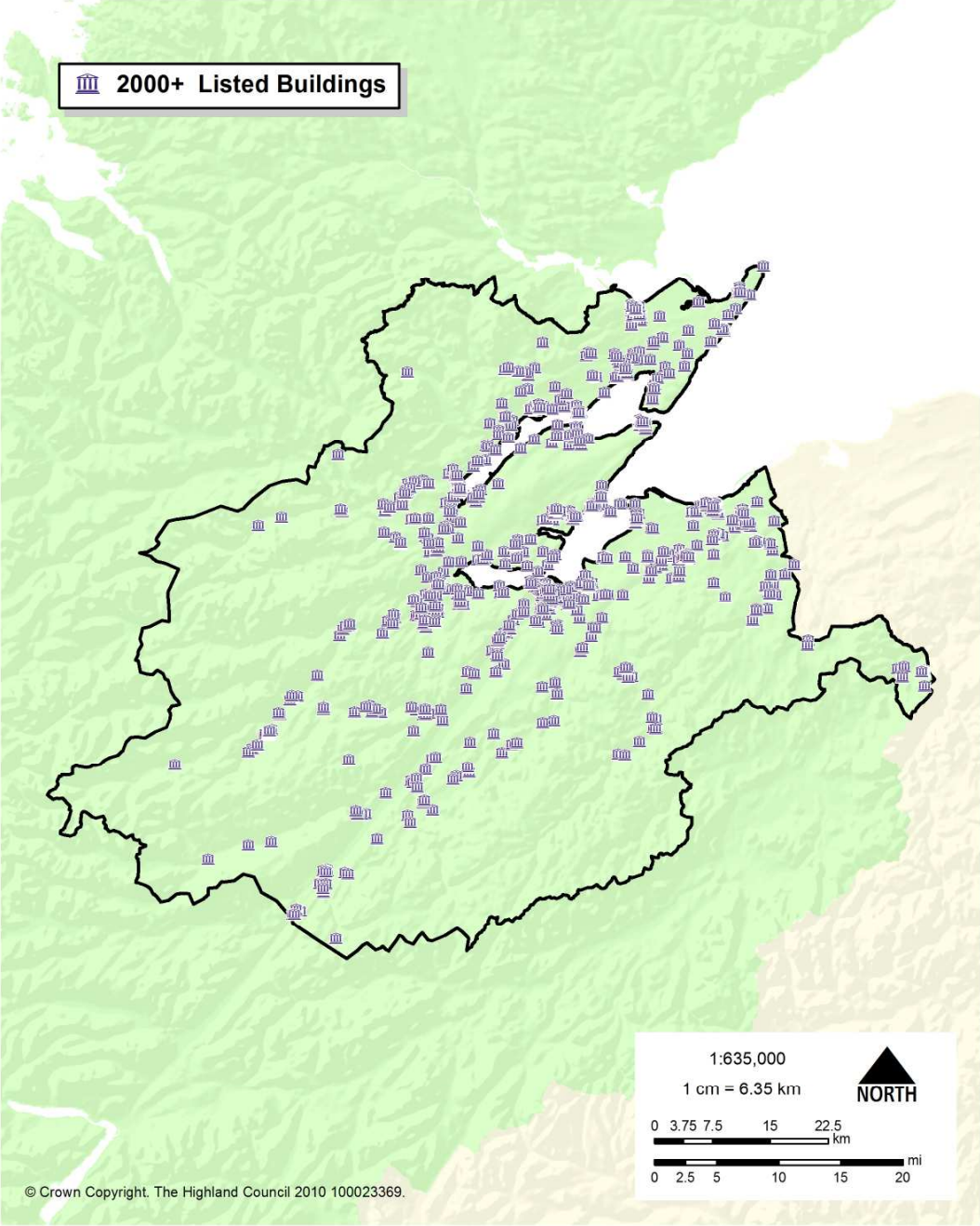
Inner Moray Firth Local Development Plan

Highland Council Libraries



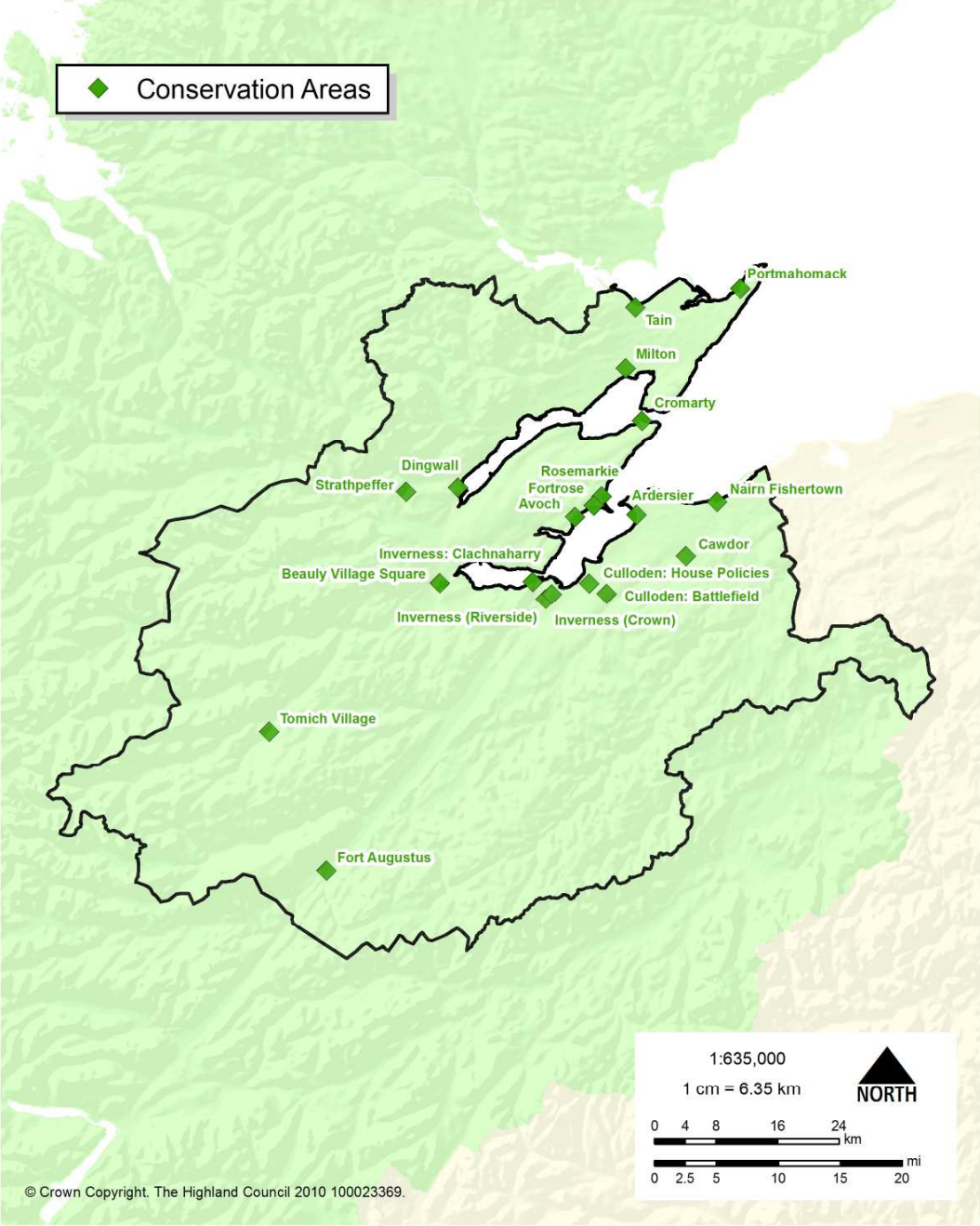
Inner Moray Firth Local Development Plan

Listed Buildings



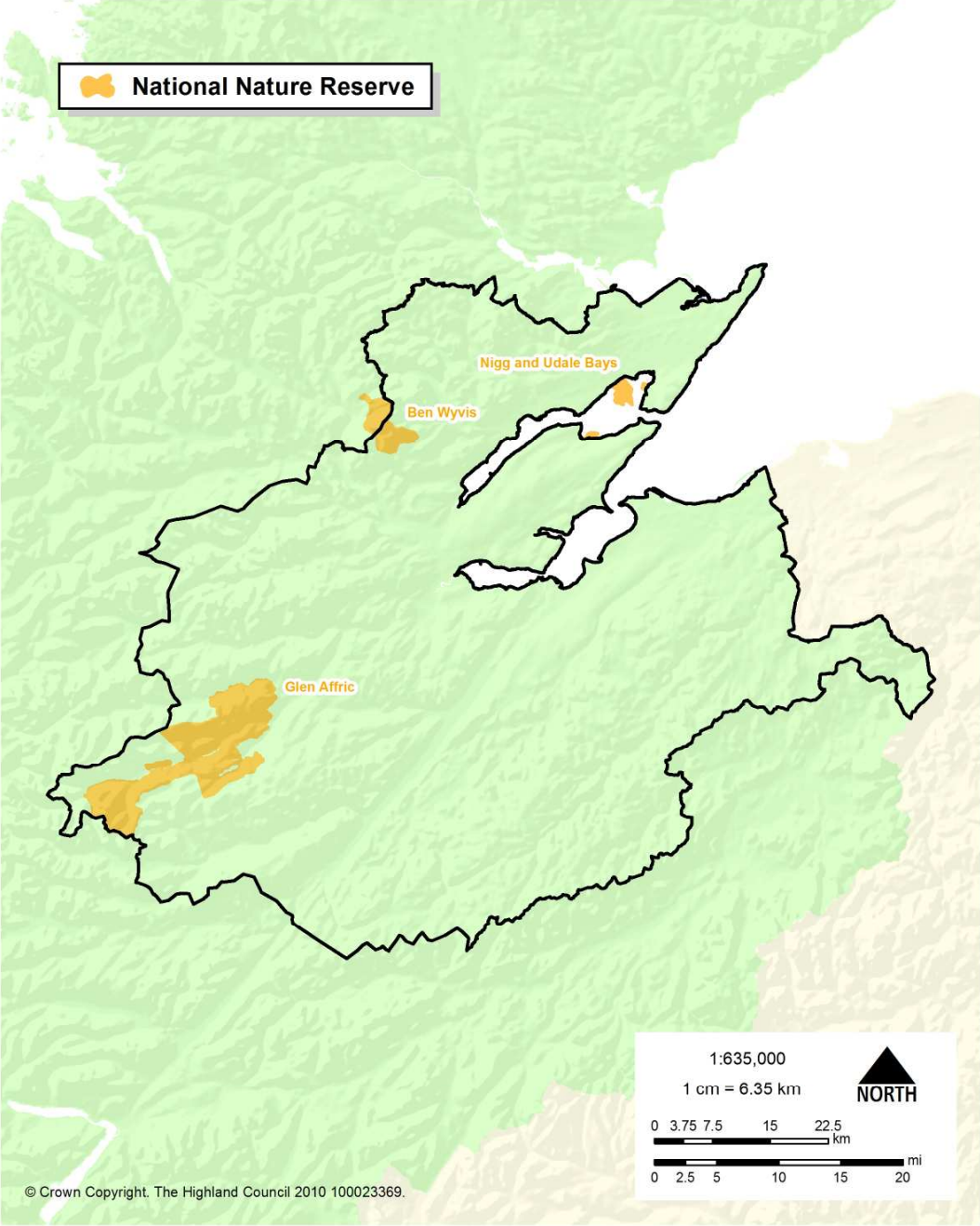
Inner Moray Firth Local Development Plan

Conservation Areas



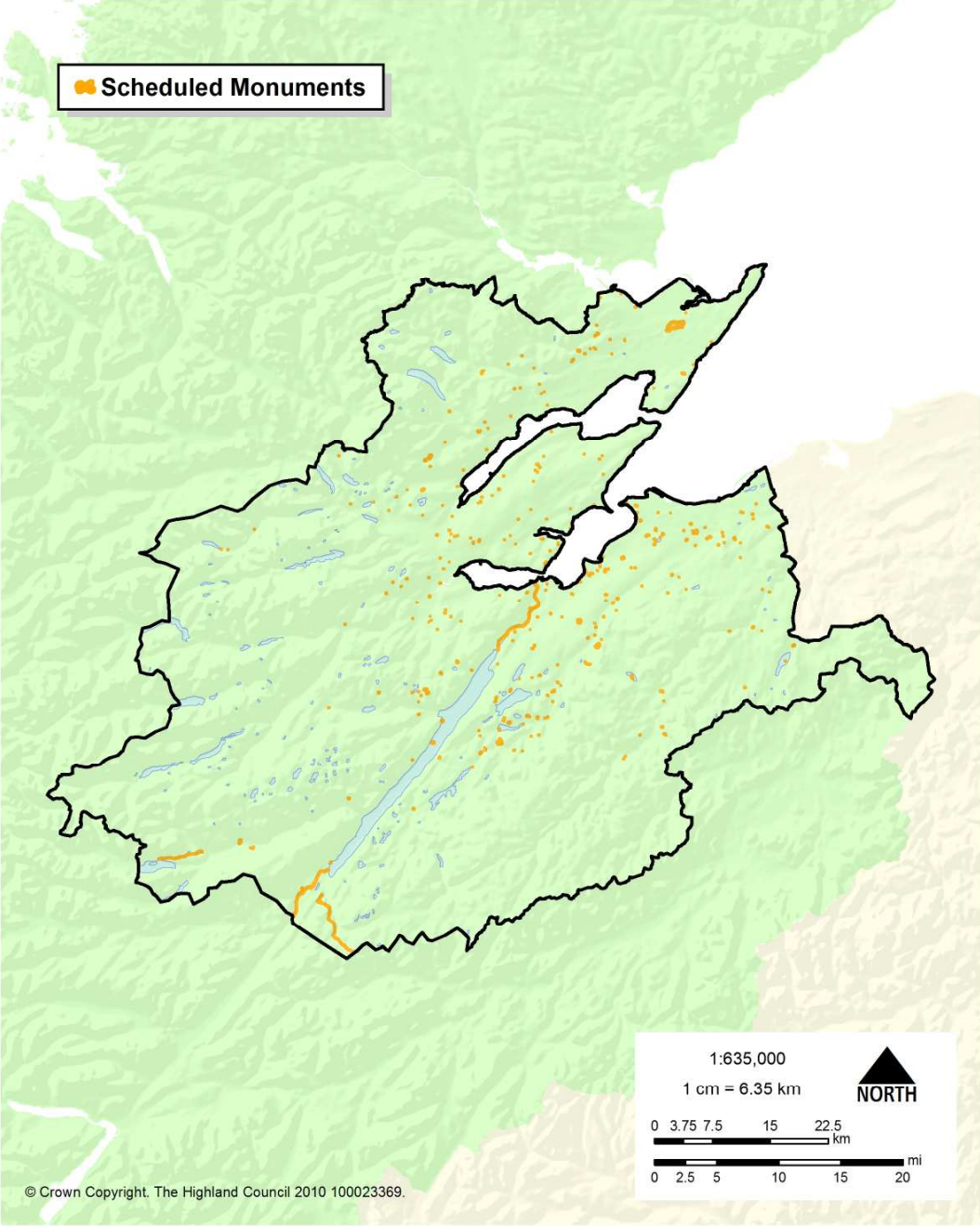
Inner Moray Firth Local Development Plan

National Nature Reserves



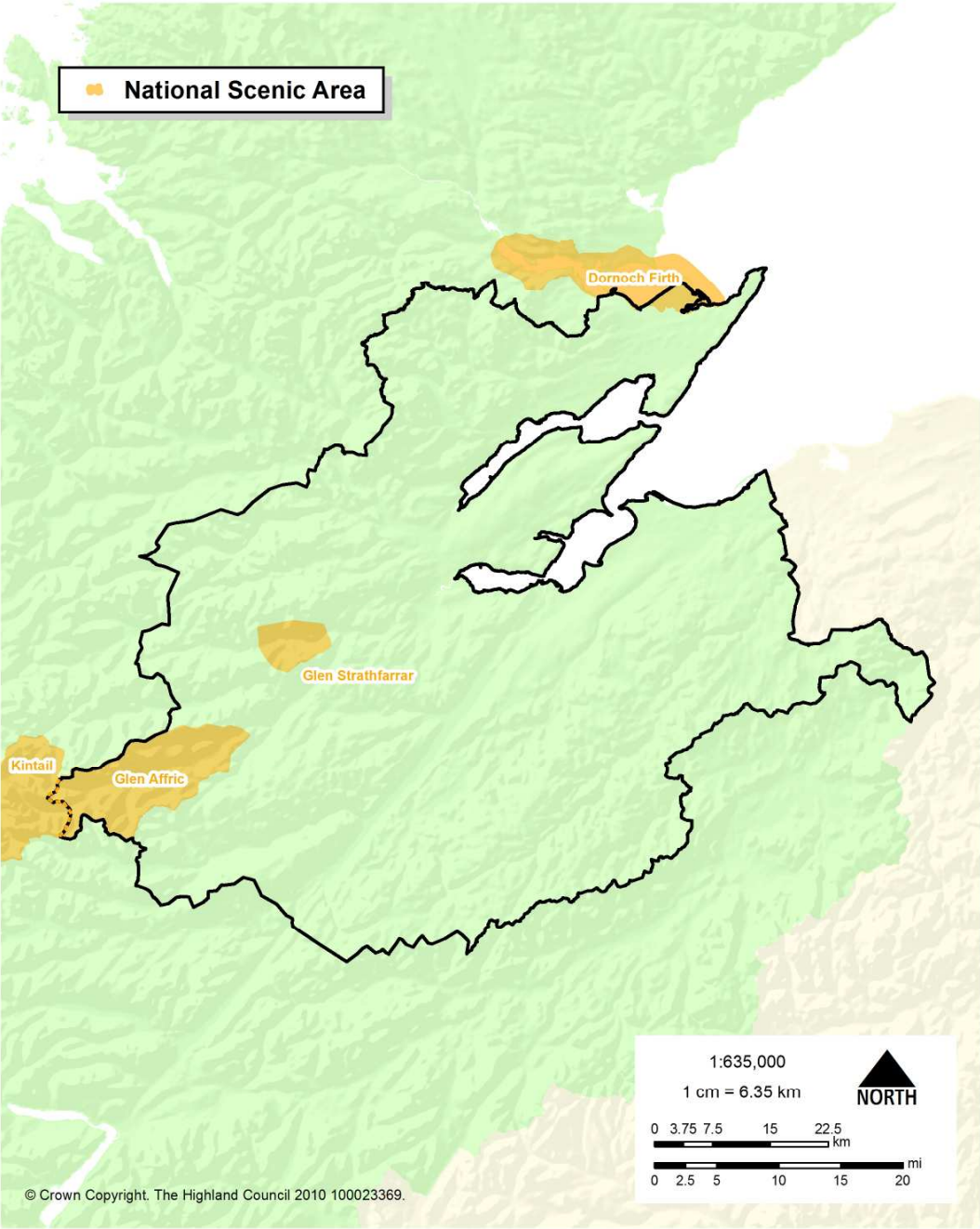
Inner Moray Firth Local Development Plan

Scheduled Monuments



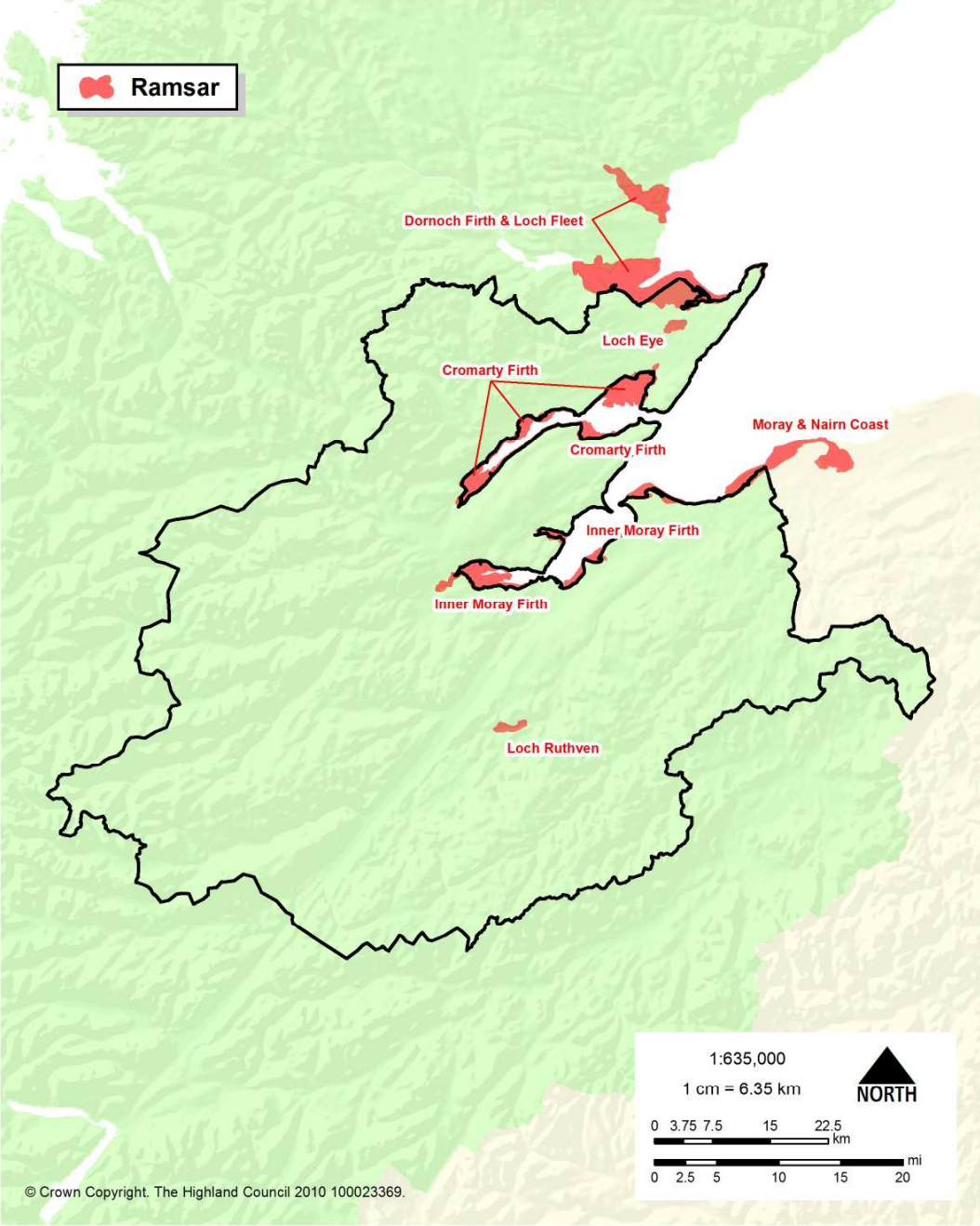
Inner Moray Firth Local Development Plan

National Scenic Areas



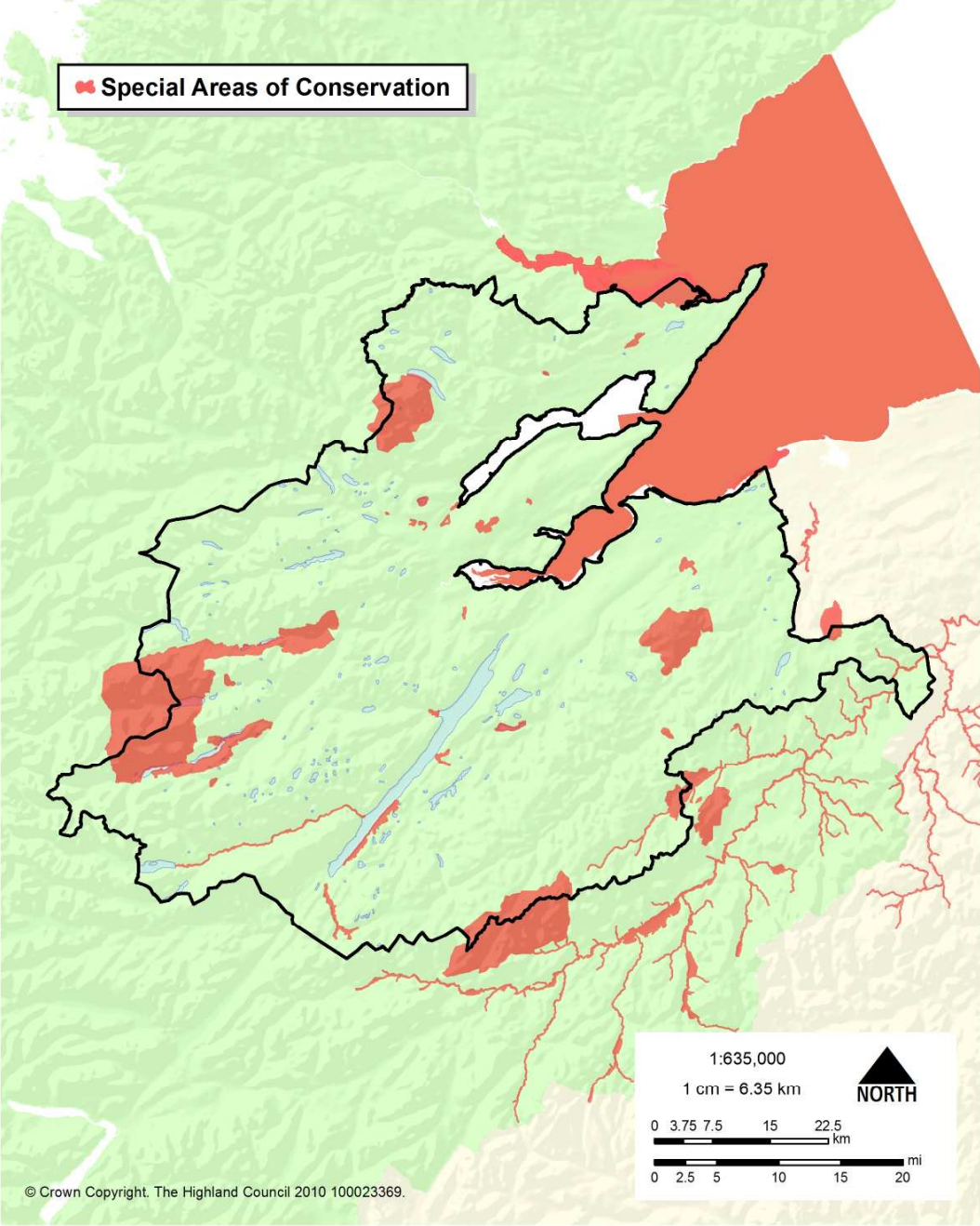
Inner Moray Firth Local Development Plan

Ramsar Sites



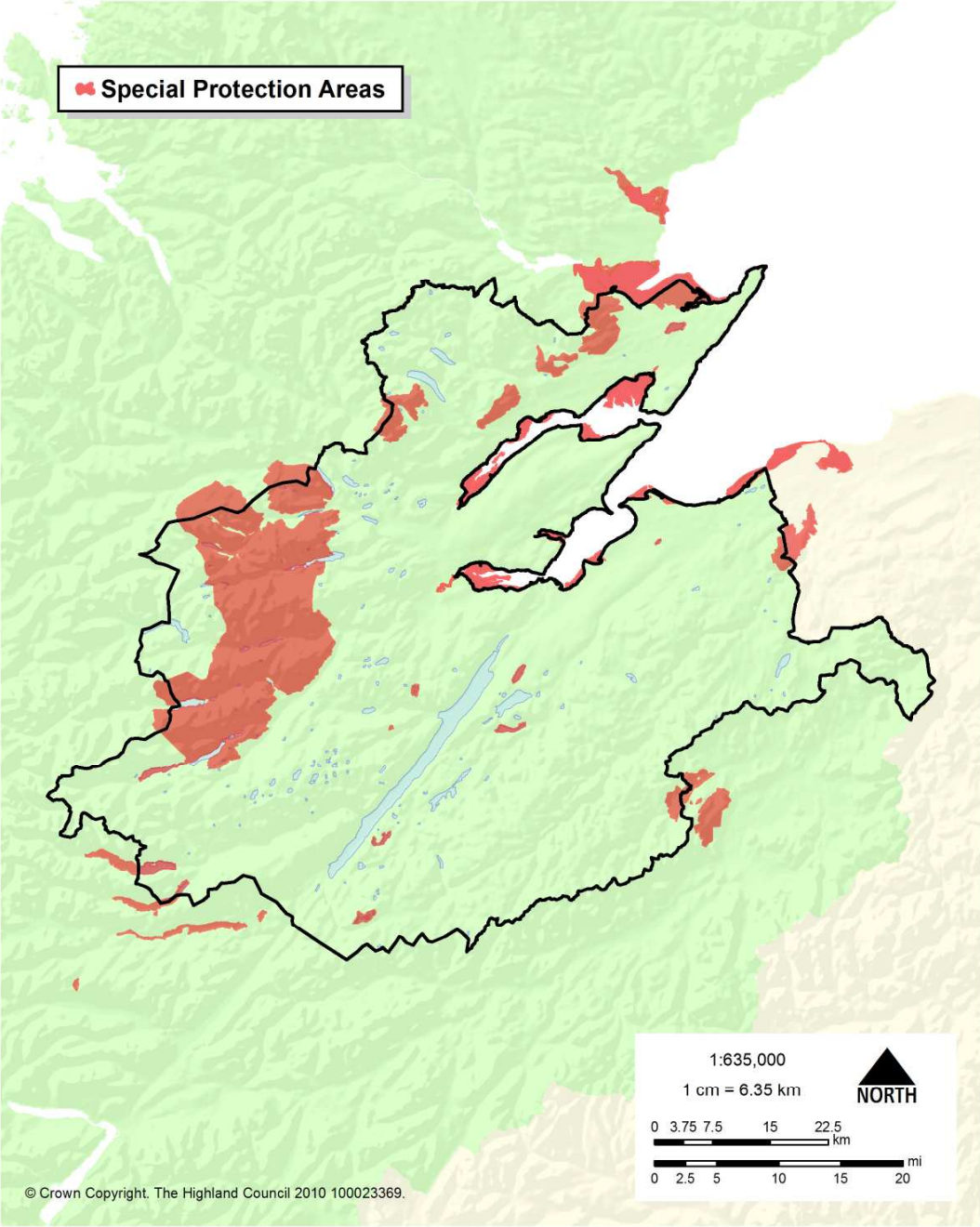
Inner Moray Firth Local Development Plan

Special Areas of Conservation



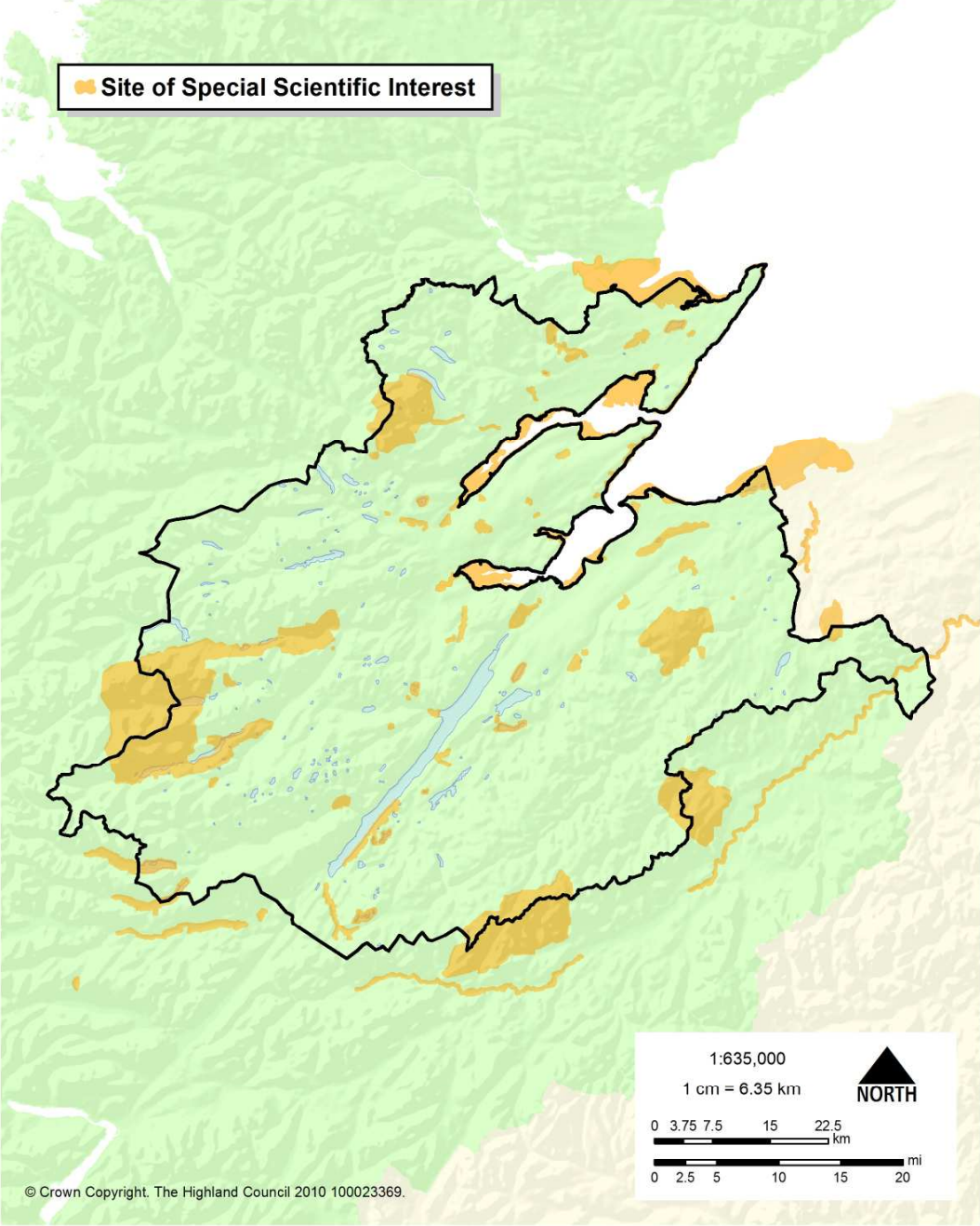
Inner Moray Firth Local Development Plan

Special Protection Areas



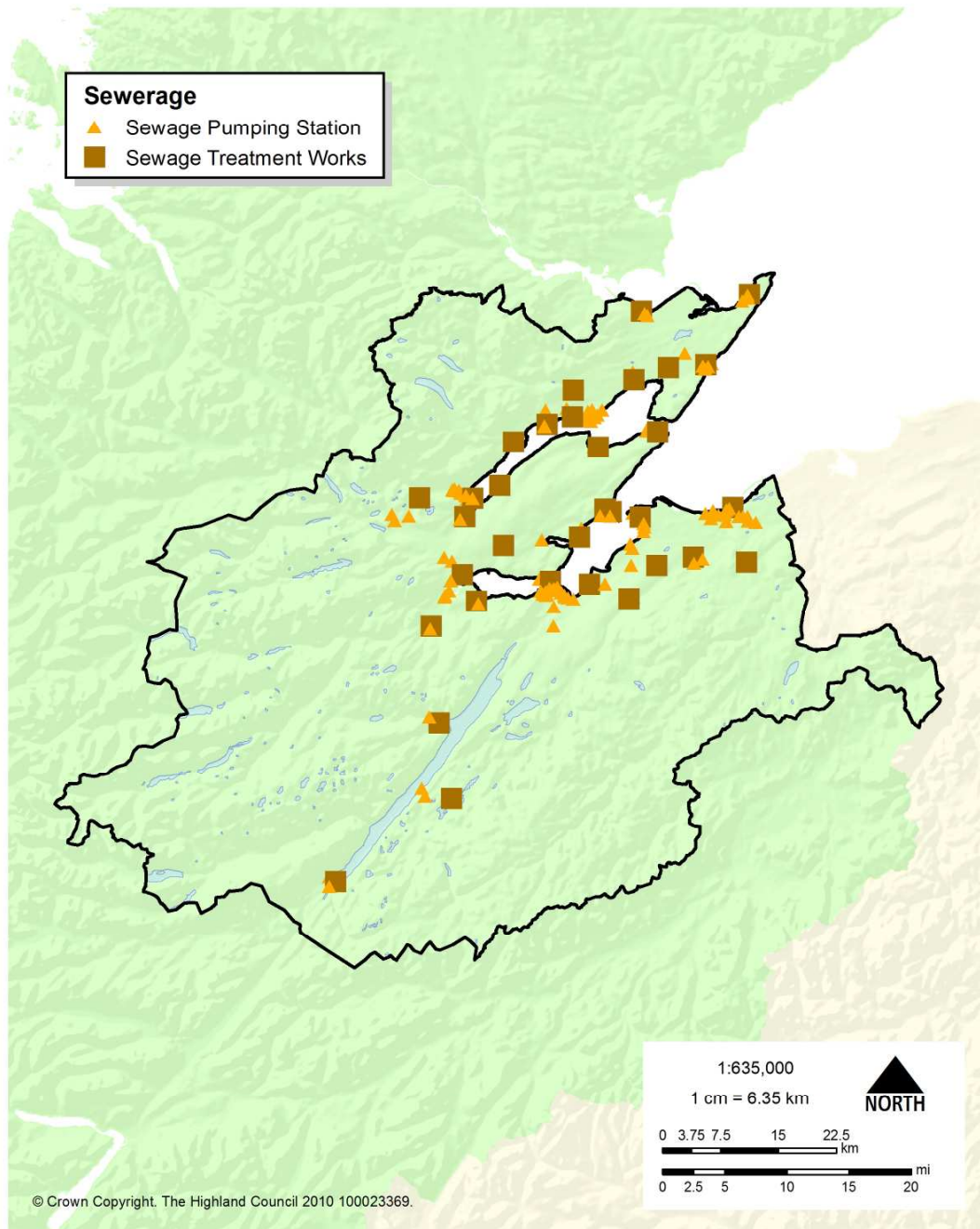
Inner Moray Firth Local Development Plan

Sites of Special Scientific Interest



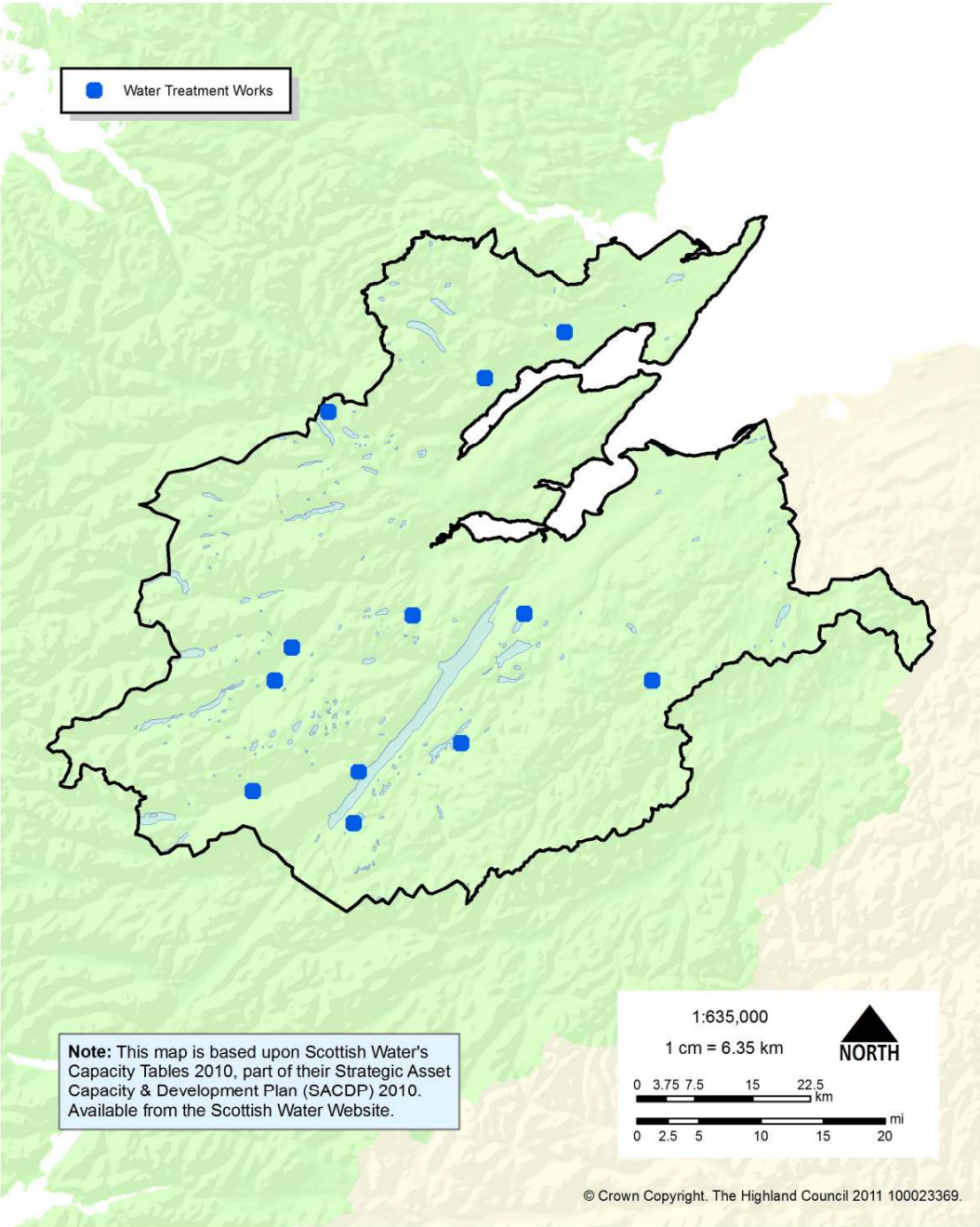
Inner Moray Firth Local Development Plan

Sewage Treatment



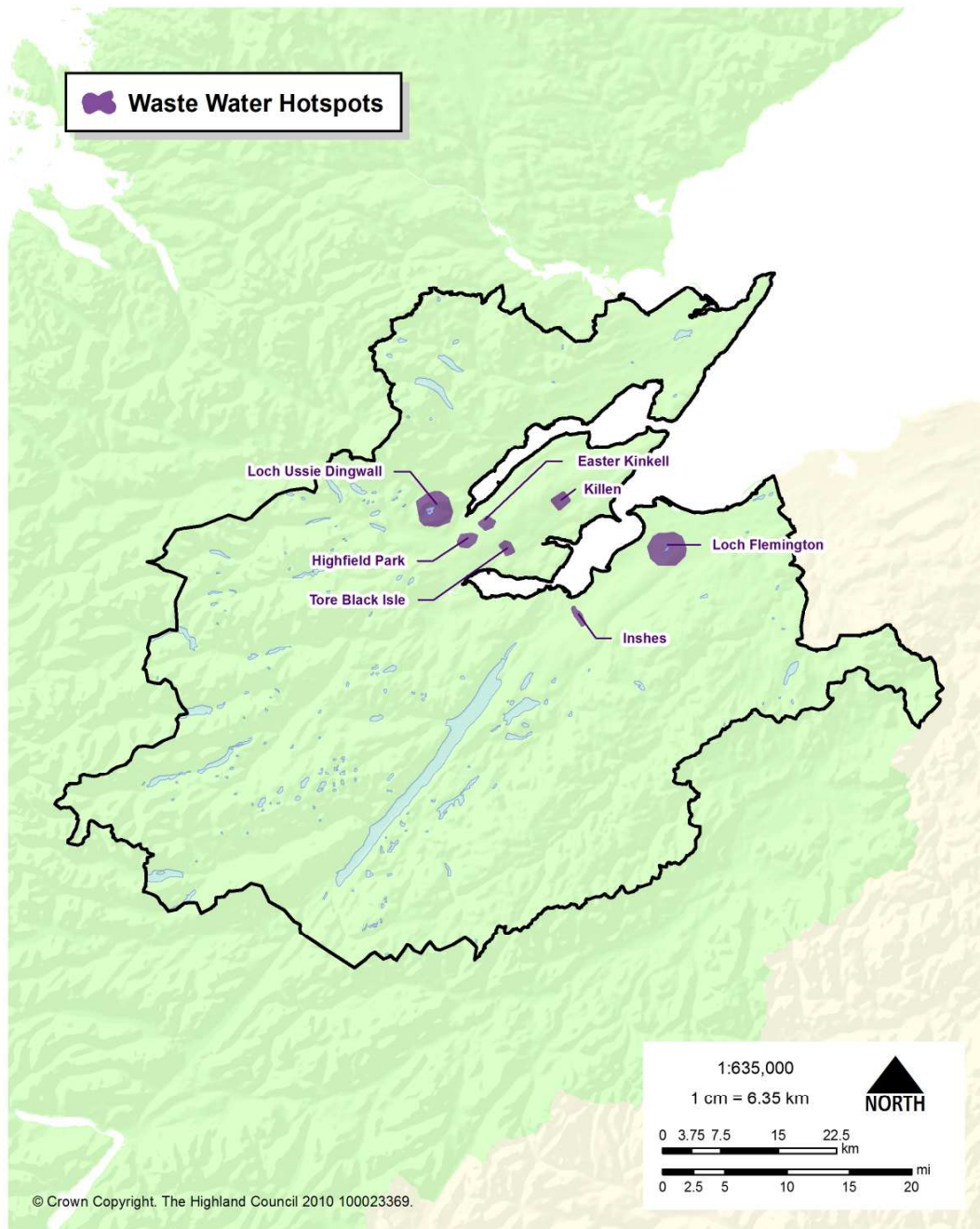
Inner Moray Firth Local Development Plan

Water Treatment



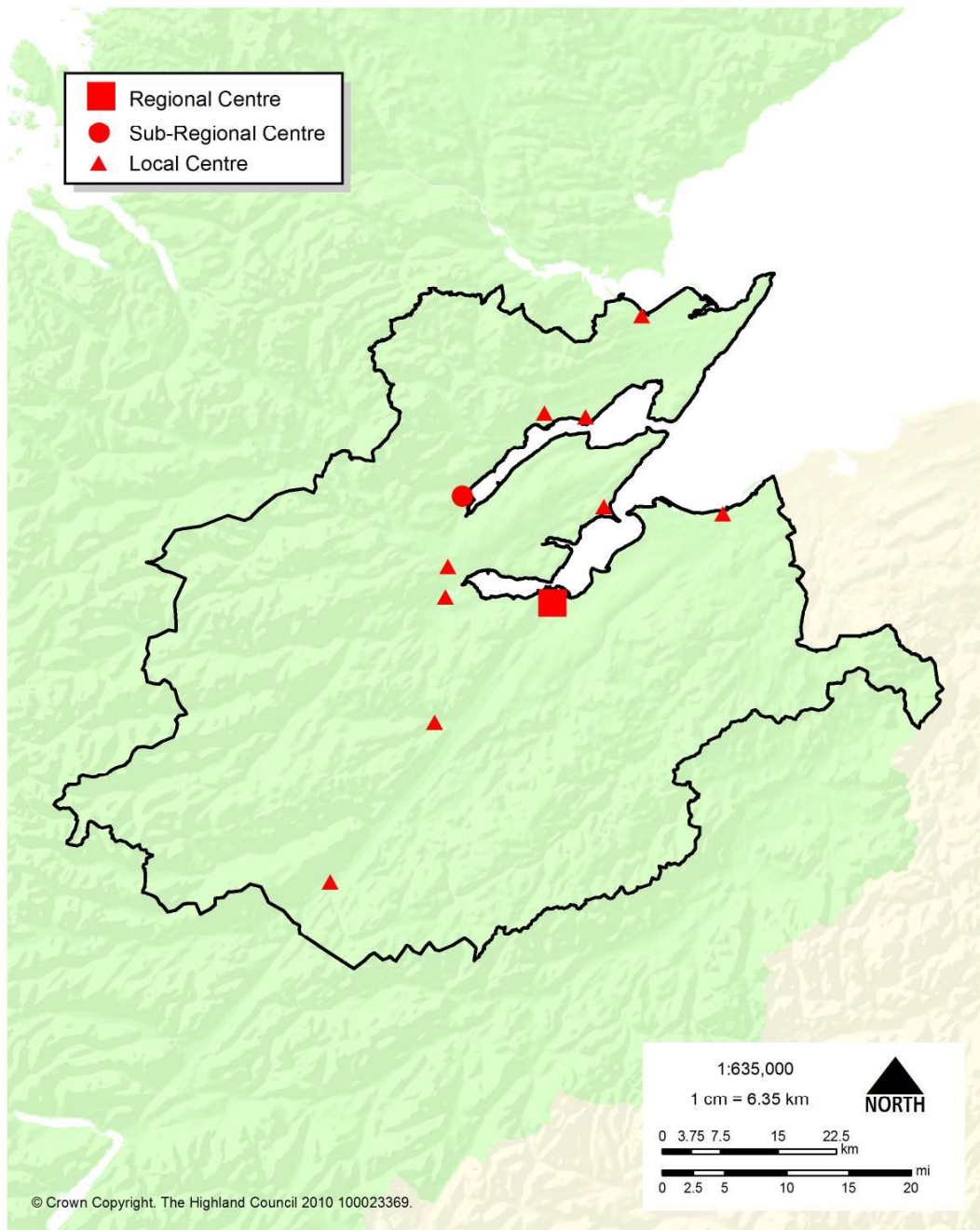
Inner Moray Firth Local Development Plan

Waste Water Drainage Hotspots



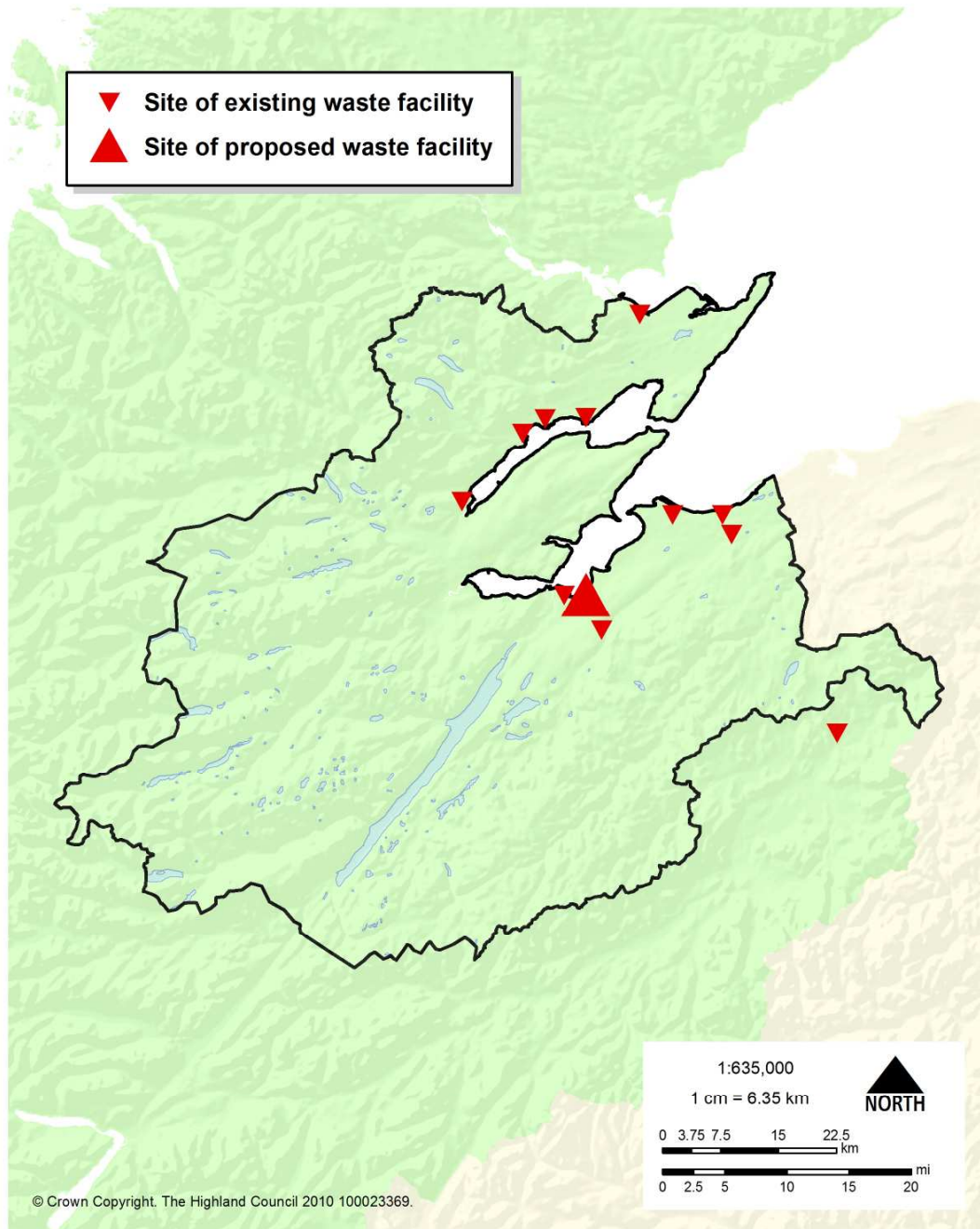
Inner Moray Firth Local Development Plan

Settlement Hierarchy



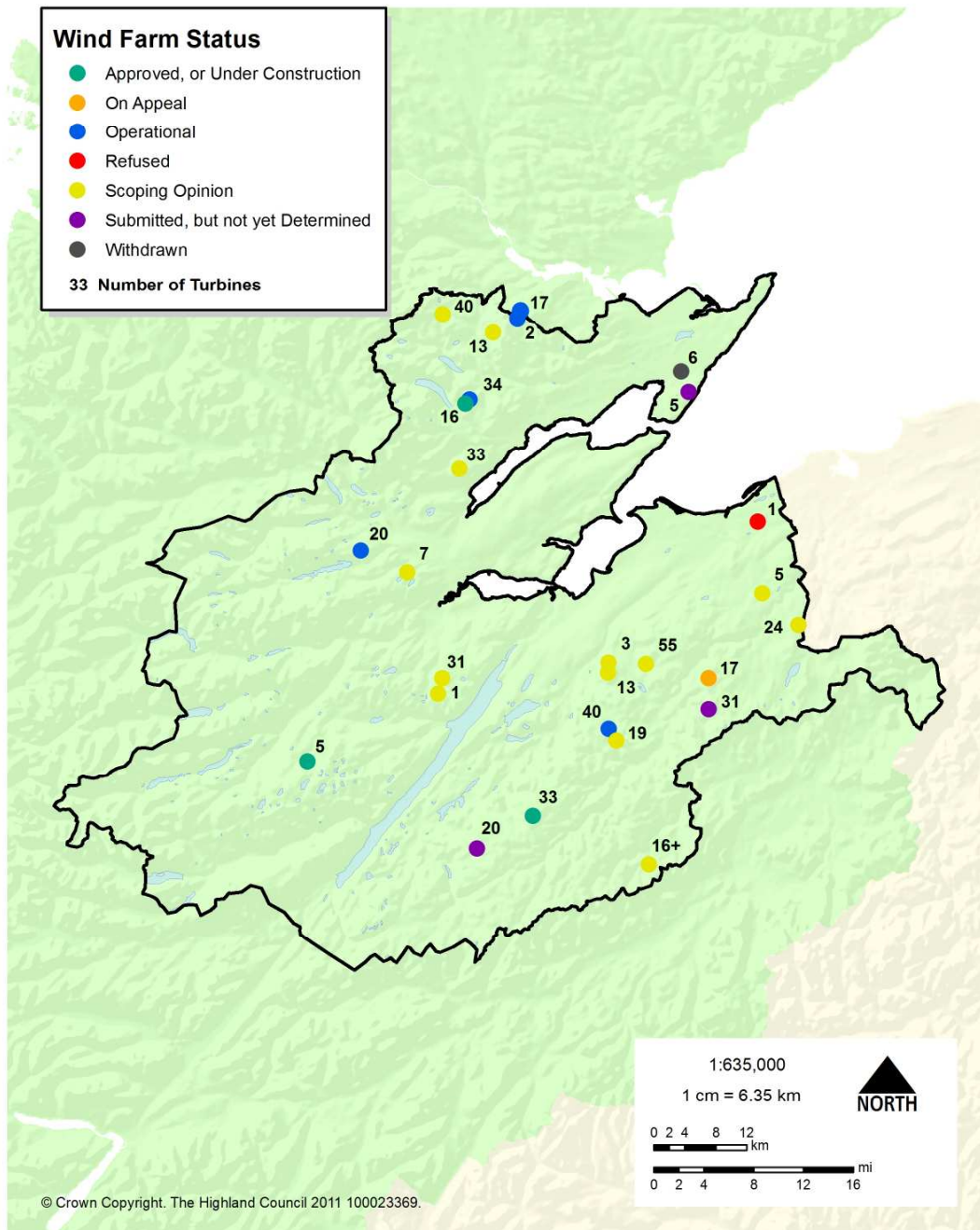
Inner Moray Firth Local Development Plan

Existing and Proposed Waste Facilities



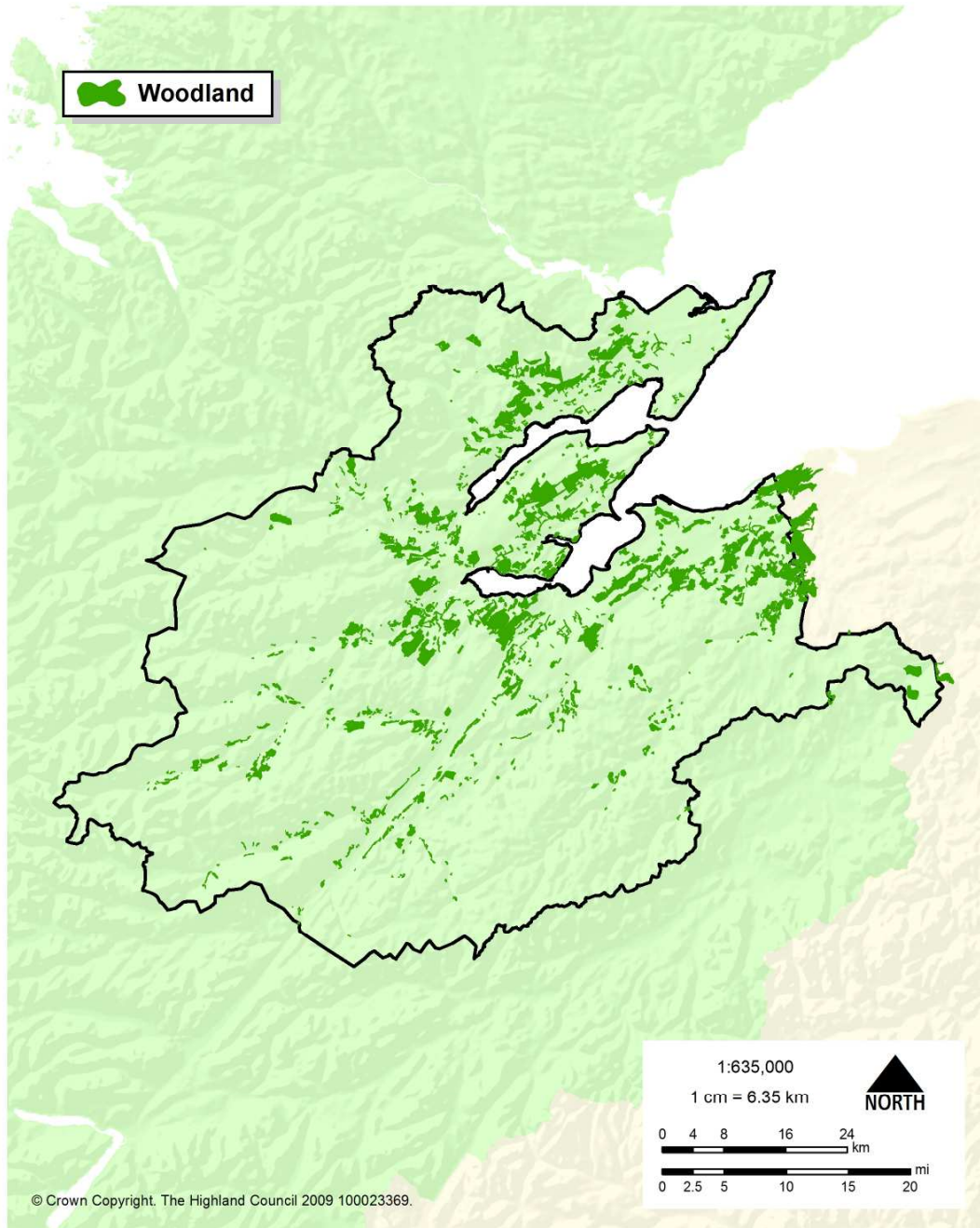
Inner Moray Firth Local Development Plan

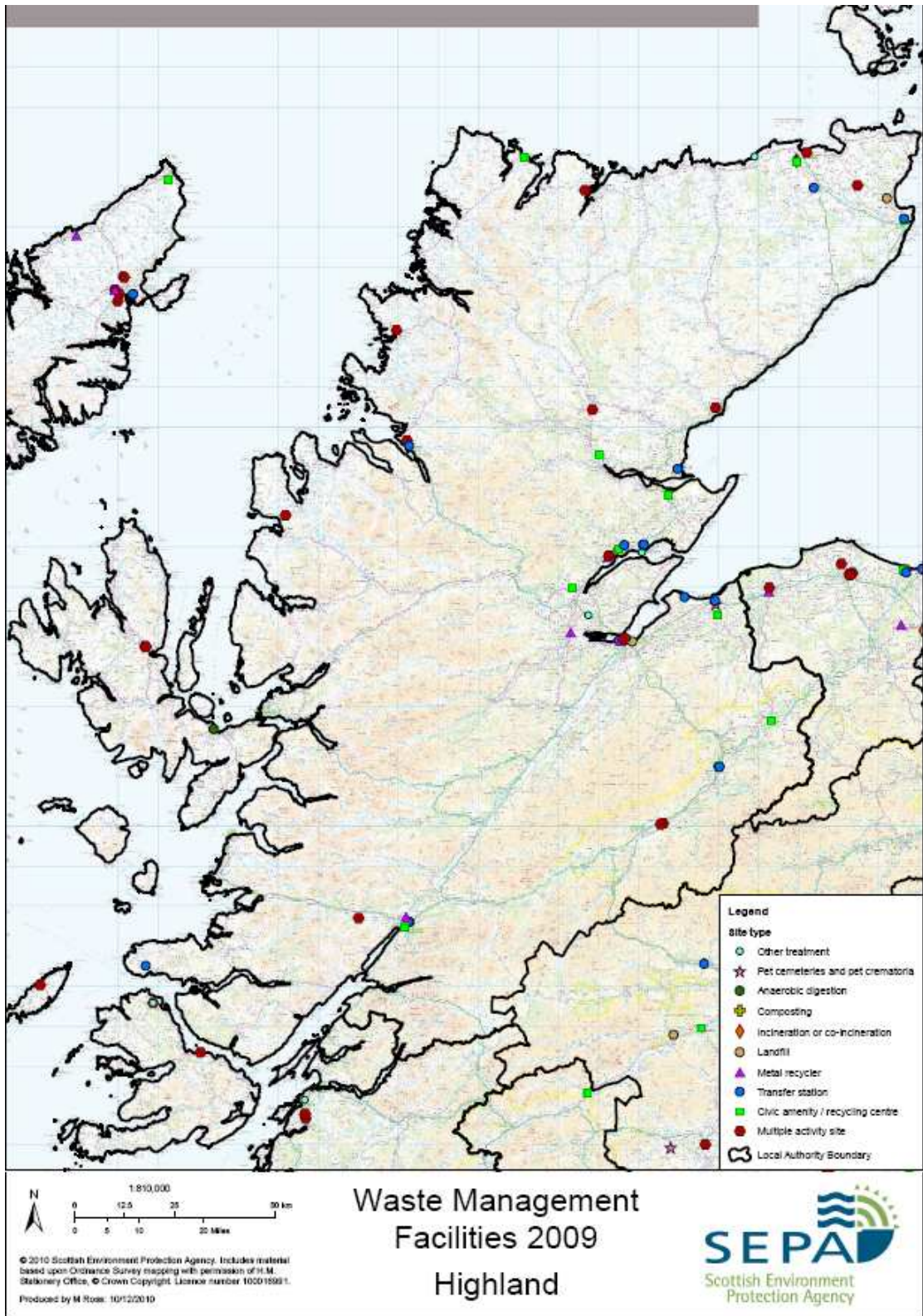
Wind Farm Activity

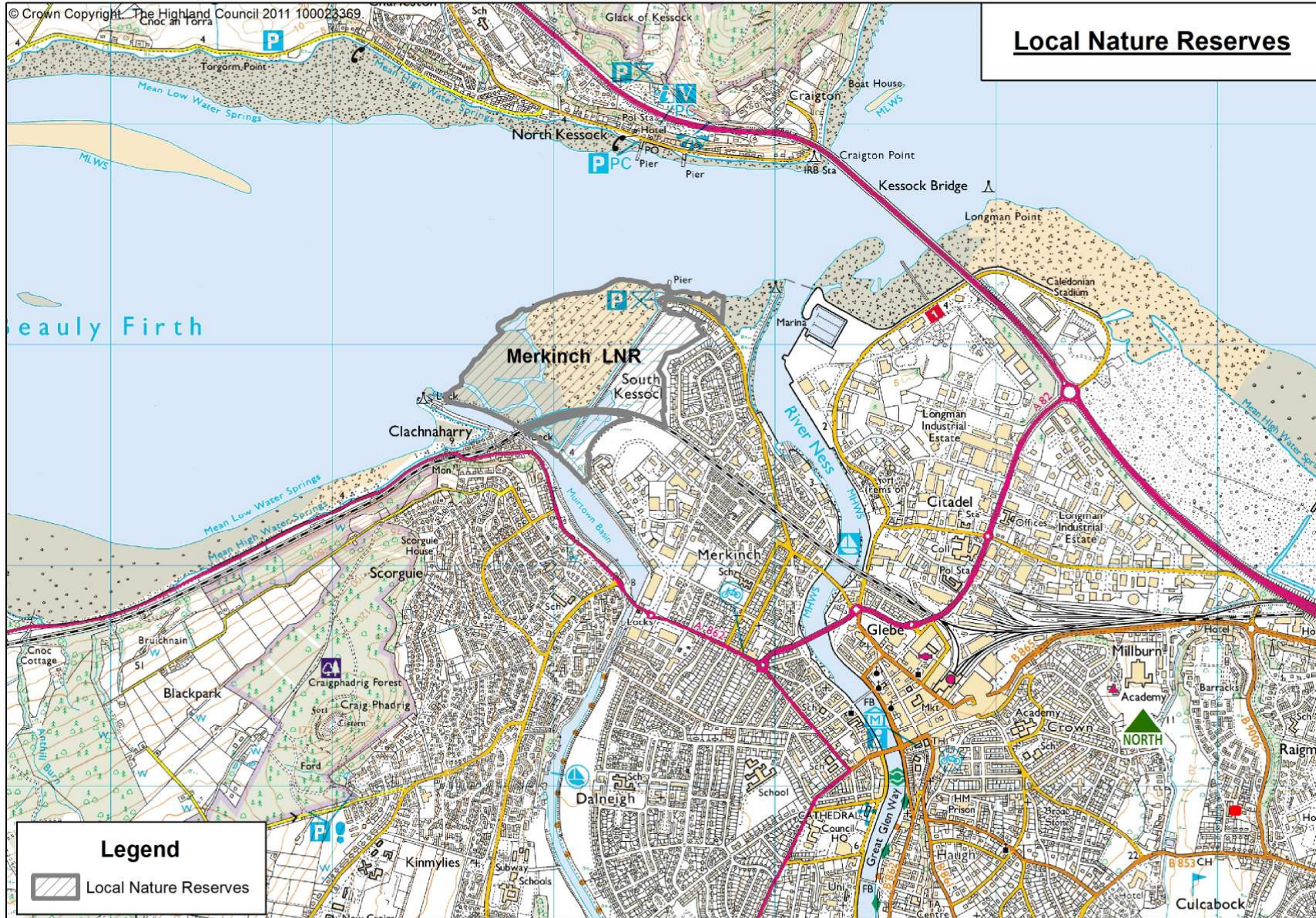


Inner Moray Firth Local Development Plan

Semi-Natural Woodland and Long-Established Woodland





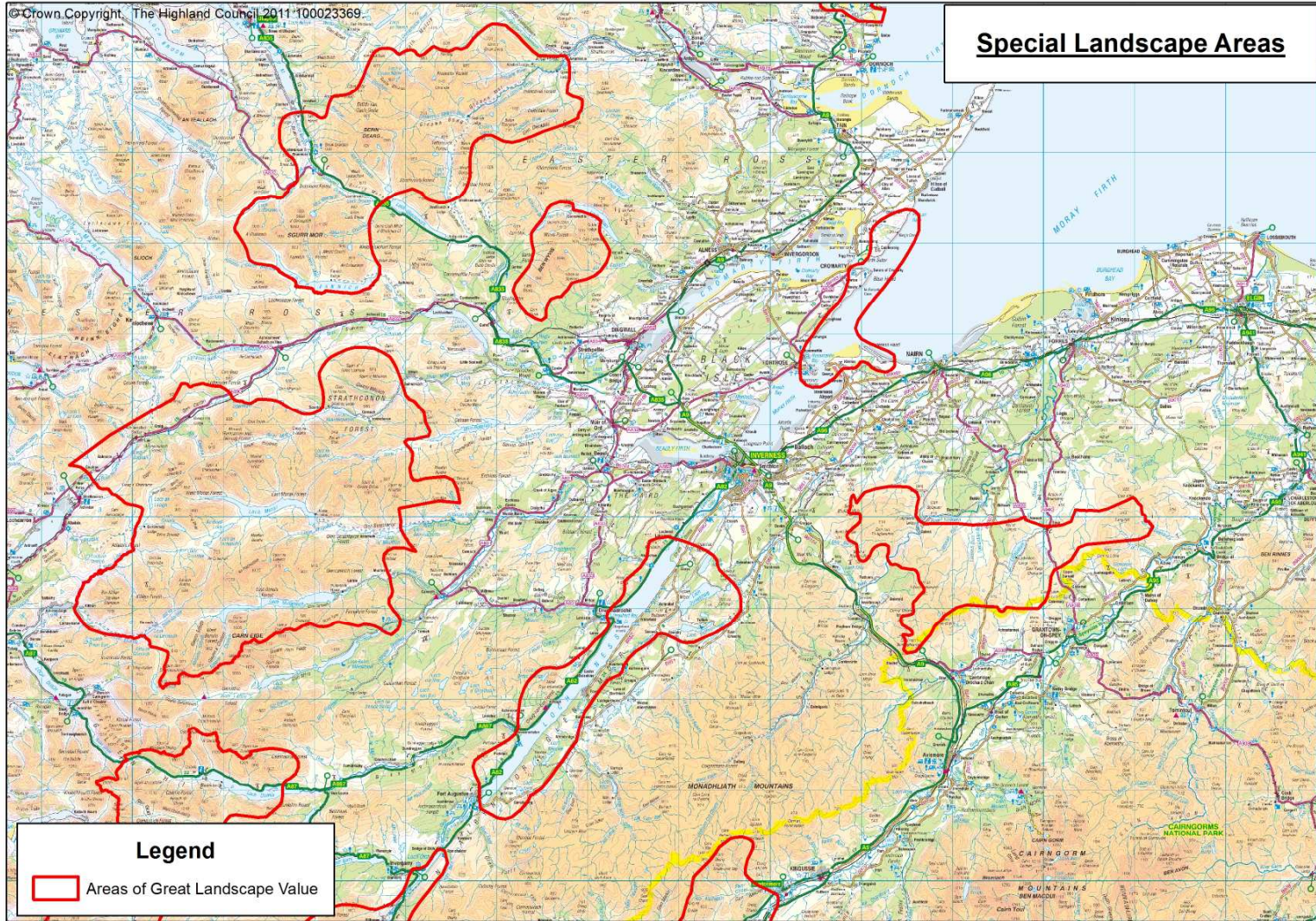


Local Nature Reserves

Legend

Local Nature Reserves

Special Landscape Areas



Legend

 Areas of Great Landscape Value

Wild Land

