

West Highland and Islands Local Development Plan

Strategic Environmental Assessment – Environmental Report

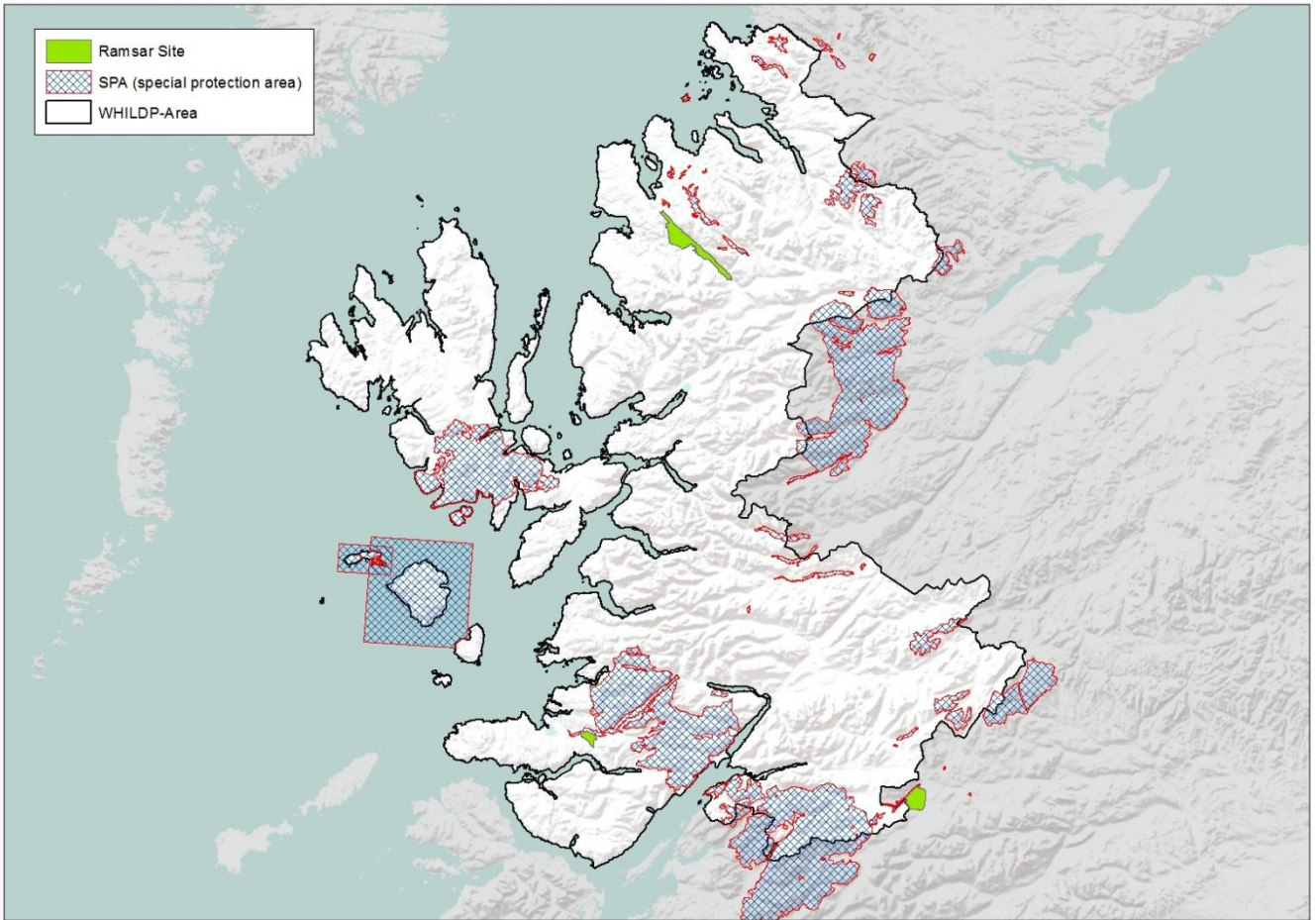
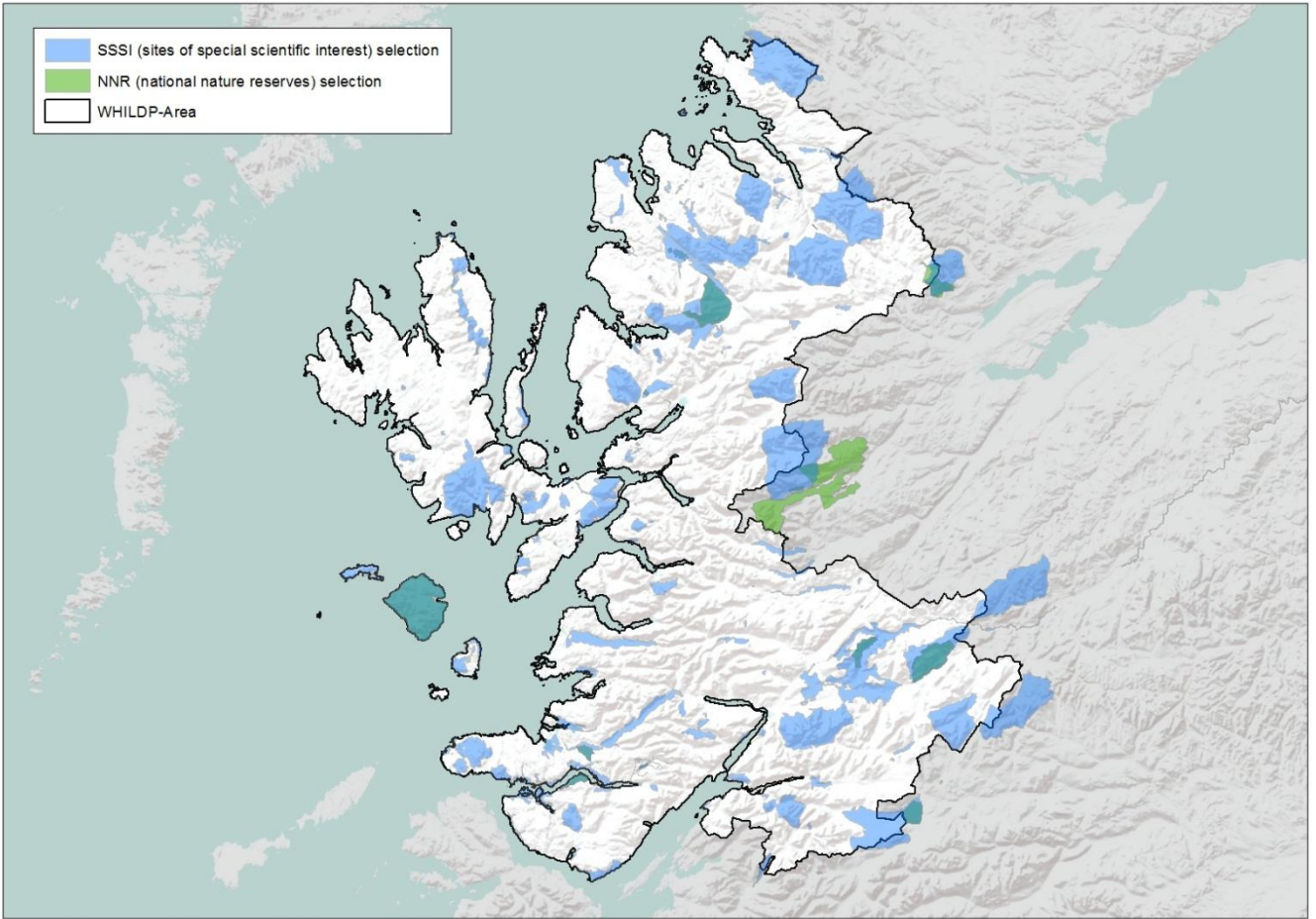
Appendix 2 – Baseline Data Information and Maps

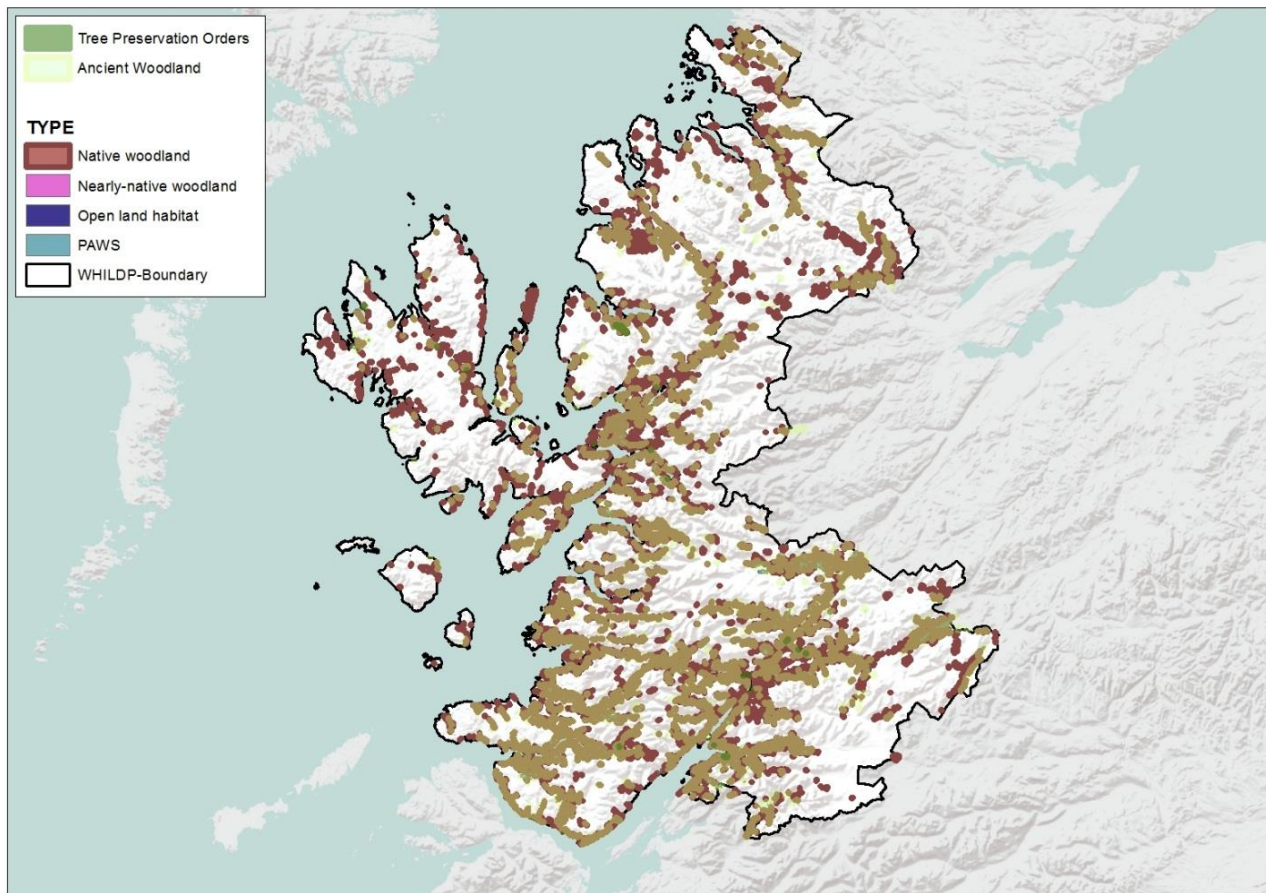
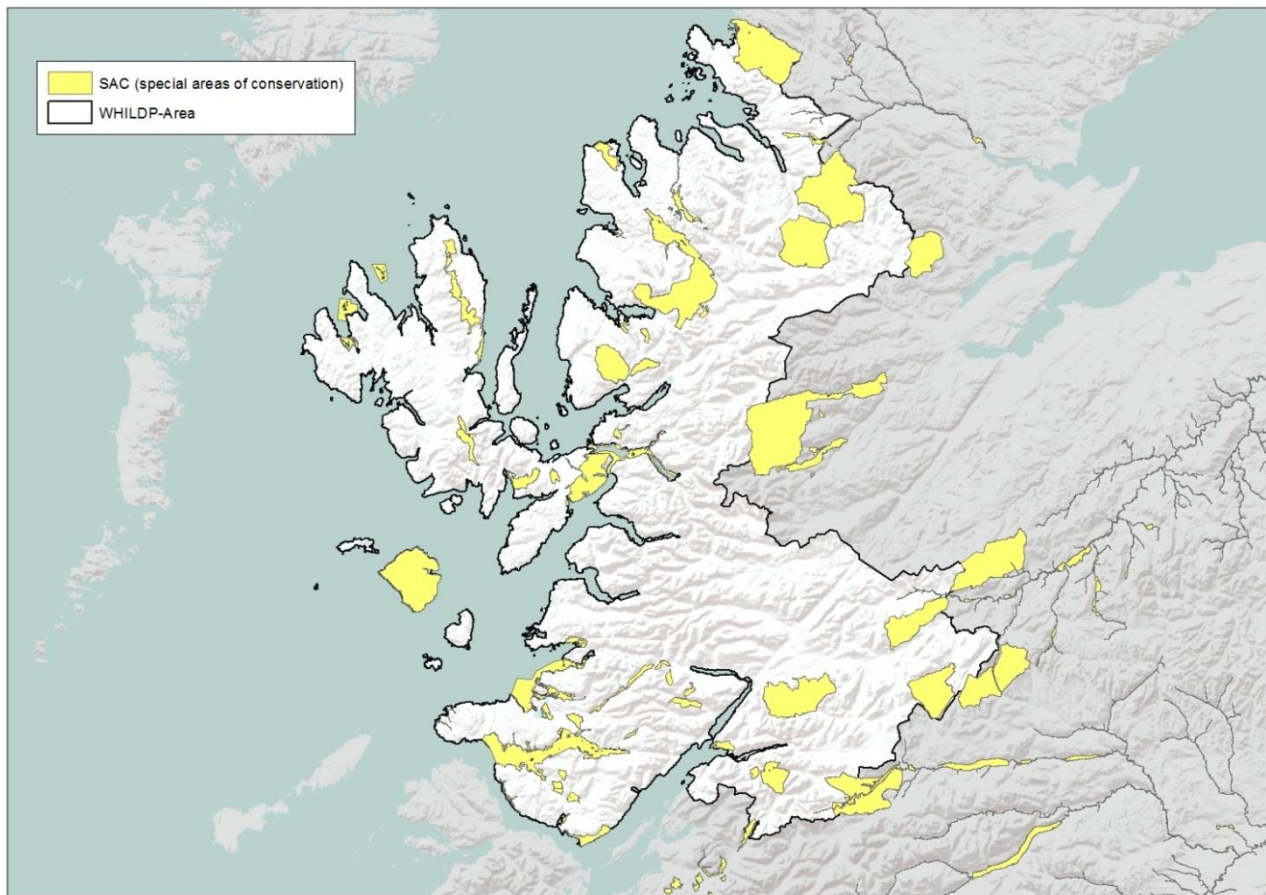
The information in this appendix shows baseline data for West Highland and Islands. It consists of a series of maps and links to sources used in the preparation of this Environmental Report. Data has been taken at either Highland wide level or, when available, at the West Highland and Islands level.

Biodiversity, Flora and Fauna	Key information	Data Source
Protect, enhance and where necessary restore designated wildlife sites and protected species	There are currently 142 SSSI's, 45 SAC's, 19 SPA's, 14 NNR's, 3 RAMSAR in the Plan area.	SNH website for information on designated sites, site condition and qualifying interests/features: www.snh.org.uk Scottish Biodiversity Strategy (Scotland's Biodiversity - It's In Your Hands; 2020 Challenge for Scotland's Biodiversity)
	Two of Scotland's three UNESCO European Geoparks lie within the West Highland and Islands Plan area. These are the Lochaber Geopark and the southern part of the North West Highlands Geopark. These areas boast the best geology in the world with the UK's highest mountains, deepest lochs and stunning natural scenery. These areas cover about 4,000km ² and home to a rich variety trees and woodland and priority habitats.	Scotland's National Peat Plan (2014)
Improve biodiversity, avoiding irreversible losses.	Highland region supports 192 of the 238 priority species in Scotland and 40 of the 42 priority habitats. 455 of the priority species of conservation importance are found in Highland.	Highland Biodiversity Action Plan www.highlandbiodiversity.com Habitat and Birds Directive – Annex 1
Provide appropriate opportunities for people to come into contact with and appreciate wild life and wild places.	Core Paths and Rights of Way	THC Core Paths Scotways
Fisheries and Aquaculture	Natural Resources of the Seas around Highland.	http://www.highland.gov.uk/yourenvironment/agriculturefisheriesandforestry/fisheriesandaquaculture/
Protected species		THC's Statutorily Protected Species Supplementary Guidance. SNH website http://www.snh.gov.uk/publications-data-and-research/snhi-information-service/map/

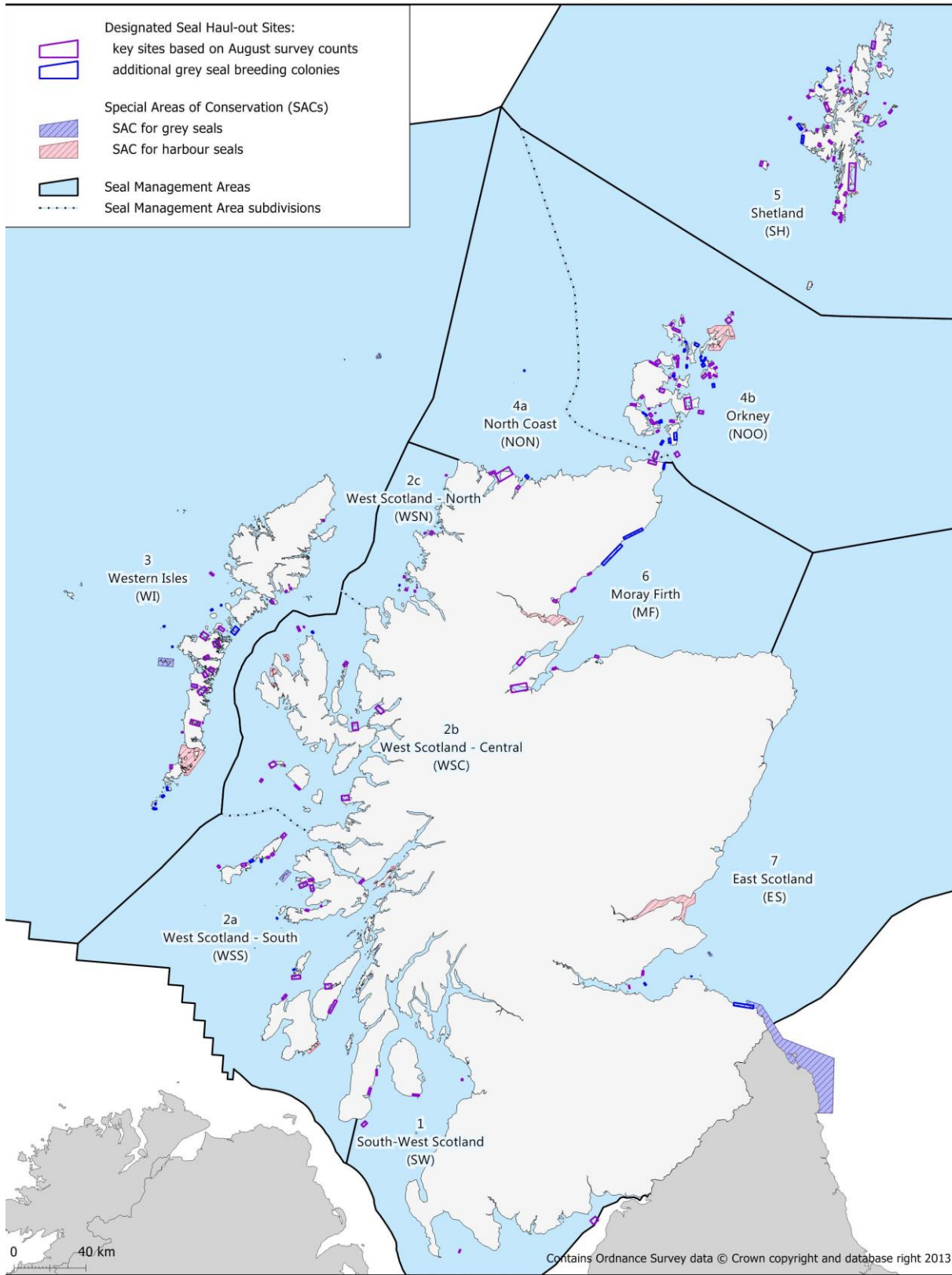
Presence of protected species may be able to be derived from the NBN Gateway <http://data.nbn.org.uk/> (although absence of any record is not conclusive that the species is not present).

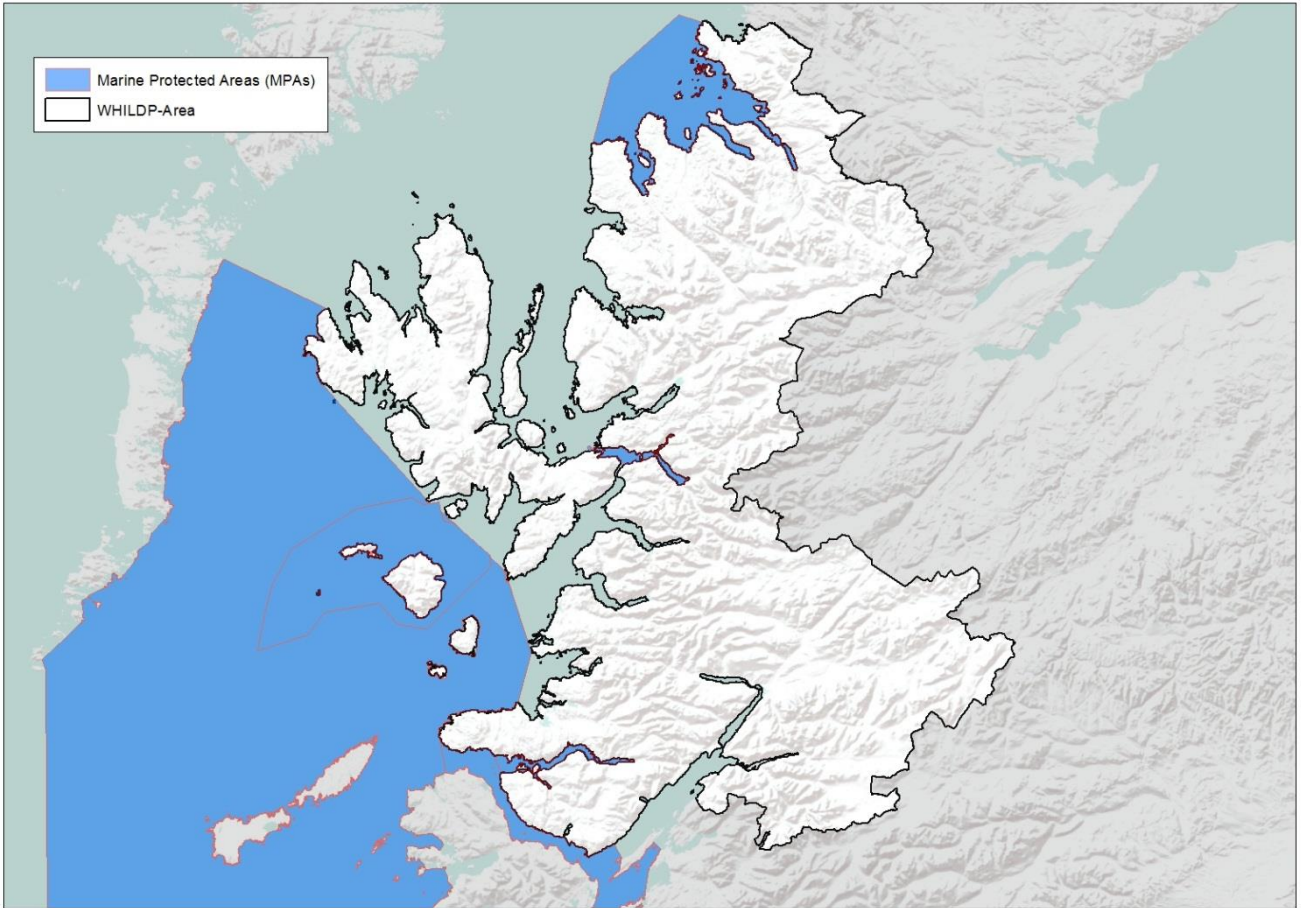
Forest and Woodland	<p>The forestry map below shows the key features within the existing forestry industry across Highland.</p> <p>In the Plan area there are 3184 Semi-natural woodland sites, 9661 Native and nearly native woodland sites and 21 Tree Preservation Orders.</p>	<p>The Highland Forest and Woodland Strategy</p> <p>Forestry Commission Scotland: http://www.forestry.gov.uk/scotland</p> <p>Native Woodland Survey of Scotland</p>
Protect and enhance the connectivity of green networks	<p>Mapped extent and mapping methodology for identification of green networks in Highland</p> <p>Green Networks will be identified through the WHILDP.</p>	<p>Green Networks Supplementary Guidance</p>
Marine Protected Areas	<p>4 Nature Conservation Marine Protected Areas</p>	<p>SNH website for information</p> <p>Marine Protected Areas</p>
Seal Haul-out Areas	<p>10 Seal Haul-out areas</p>	<p>Seal Haul-out Areas</p>





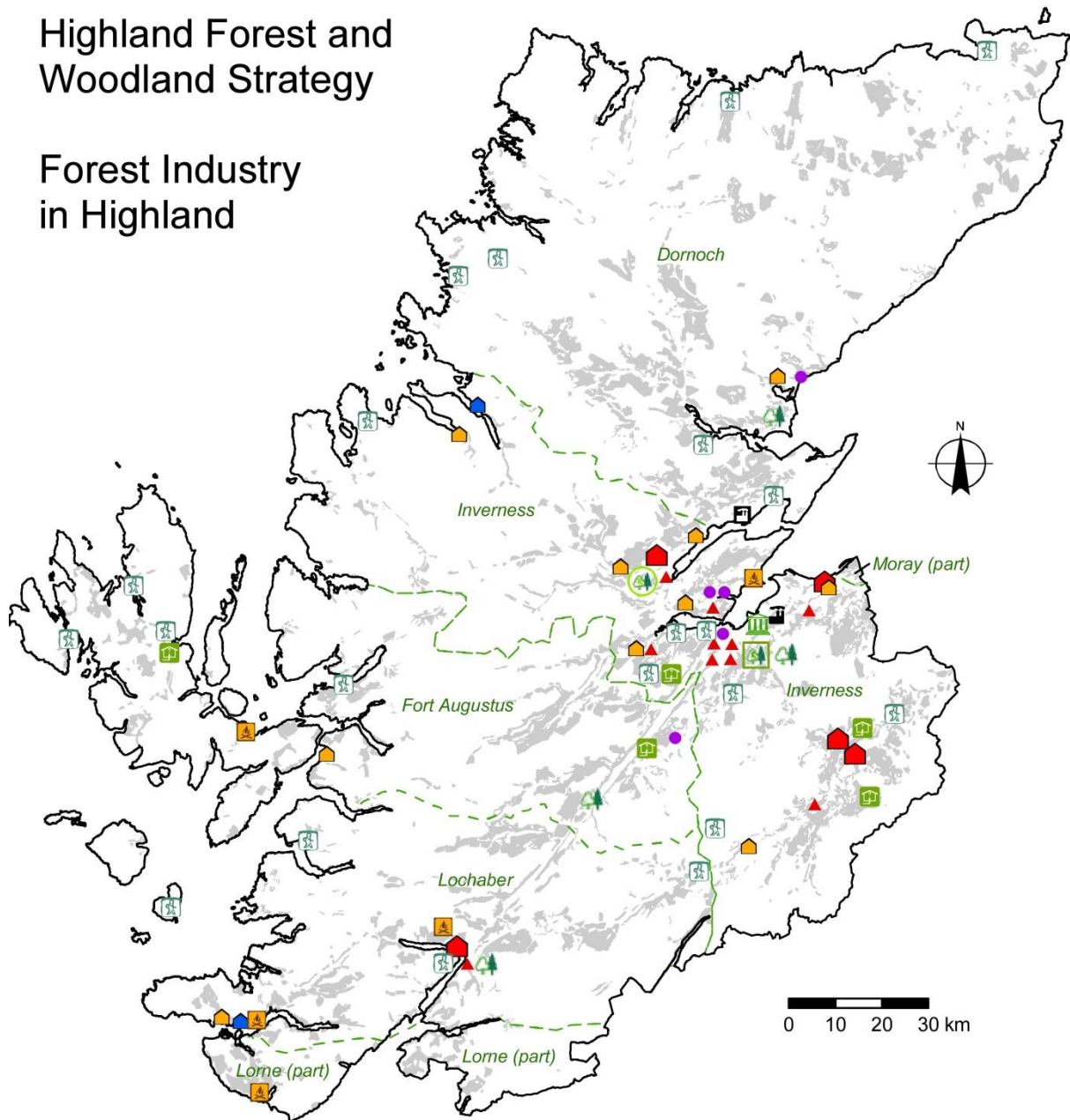
Designated Seal Haul-out Sites in Scotland
as set out in an order made under section 117 of the Marine (Scotland) Act 2010





Highland Forest and Woodland Strategy

Forest Industry in Highland



Forestry Commission Scotland	▲ Forest management company main office	🏠 Major sawmill	🏠 Forestry/woodlands interpretive centre
🏠 Scotland HQ	● Forestry/woodland NGOs	🏠 Smaller scale sawmill	🌲 Forest and woodland area
🌲 Highland Conservancy	🎓 Forestry training colleges	🏠 Mobile sawmills (base location)	
🌲 District office	🏭 Timber processing factory	🏠 Woodfuel supplier	
🌲 Forestry District boundary	🏭 Potential timber processing factory location	🏠 Community woodland	

Population and Human Health	Key Information	Data Source
<p>Population and demographics</p>	<p>Information on the current situation and forecasts for future demographic changes at local, regional and international levels.</p> <ul style="list-style-type: none"> • Population of Highland increased from 208, 914 to 232,132 between 2001 and 2011 (11% increase) • Population is projected to increase by 15% by 2035. • There is expected to be 16, 029 more people of retirement age and 5507 fewer children than in 2004. Therefore the population is expected to age. • 3 data zones in highland Region fall within the 5% most deprived zones in Scotland. 2 data zones fall within the top 5% least deprived. • A large proportion of Highland Region is referred to as “Fragile” in terms of remoteness and scarcity of population. An average of 8 people live per sq km, throughout the region, reducing to 2 people per sq km in some parts. <p>In the West Highland and Islands area the population was 39,201 in 2013. In the decade to 2013 the population grew by 1,936 people, an increase of 5.2% which compares with increases of 10.1% and 5.1% for Highland and Scotland respectively. The population is expected to increase by 5% between 2012 and 2037.</p> <p>Current population density is 3.9 people per km² (compared to Highland at 8.7 people per km² and 67.4 for Scotland).</p>	<p>Census statistics and analysis www.ons.gov.uk</p> <p>Scottish Household Survey 2012 http://www.scotland.gov.uk/Topics/Statistics/16002</p> <p>Scottish Index of Multiple Deprivation</p> <p>Highland Council Deprivation and Fragility Informaton</p>
<p>Health and well-being</p>	<p>Baseline information on the current situation and forecasts for future trends on a variety of topics including health, crime, environmental health.</p>	<p>www.isdscotland.org</p> <p>Transport Scotland: Household Survey 2012 www.audit-scotland.gov.uk http://www.transportscotland.gov.uk/news/scottish-household-survey-travel-diary-2012</p>
<p>School rolls</p>	<p>Many of the primary and secondary schools are significantly under capacity.</p>	<p>School roll forecasts</p>
<p>Physical activity and active travel</p>	<p>Information on physical activity organisations and current and planned</p>	<p>2012 Scottish Household Survey</p>

active travel projects.

- 47.7% of Highland has not walked as a means of transport in the past week and only 40.5% walked for pleasure in the last week.
- 49% of Highland population has access to a bicycle (second only to Moray at 49.6%)

www.scotland.gov.uk/Topics/Statistics/16002

Sustrans National Cycle Network Map;

<http://www.sustrans.org.uk/ncn/map/national-cycle-network>

[Active Travel audits](#) are available for Thurso and Wick

[THC Core Paths](#)

Scotways

[THC Open Space Supplementary Guidance and Greenspace Audit](#)

Greenspace Scotland

<http://www.greenspacescotland.org.uk/audits-and-strategies.aspx>

Scottish Household Survey 2012

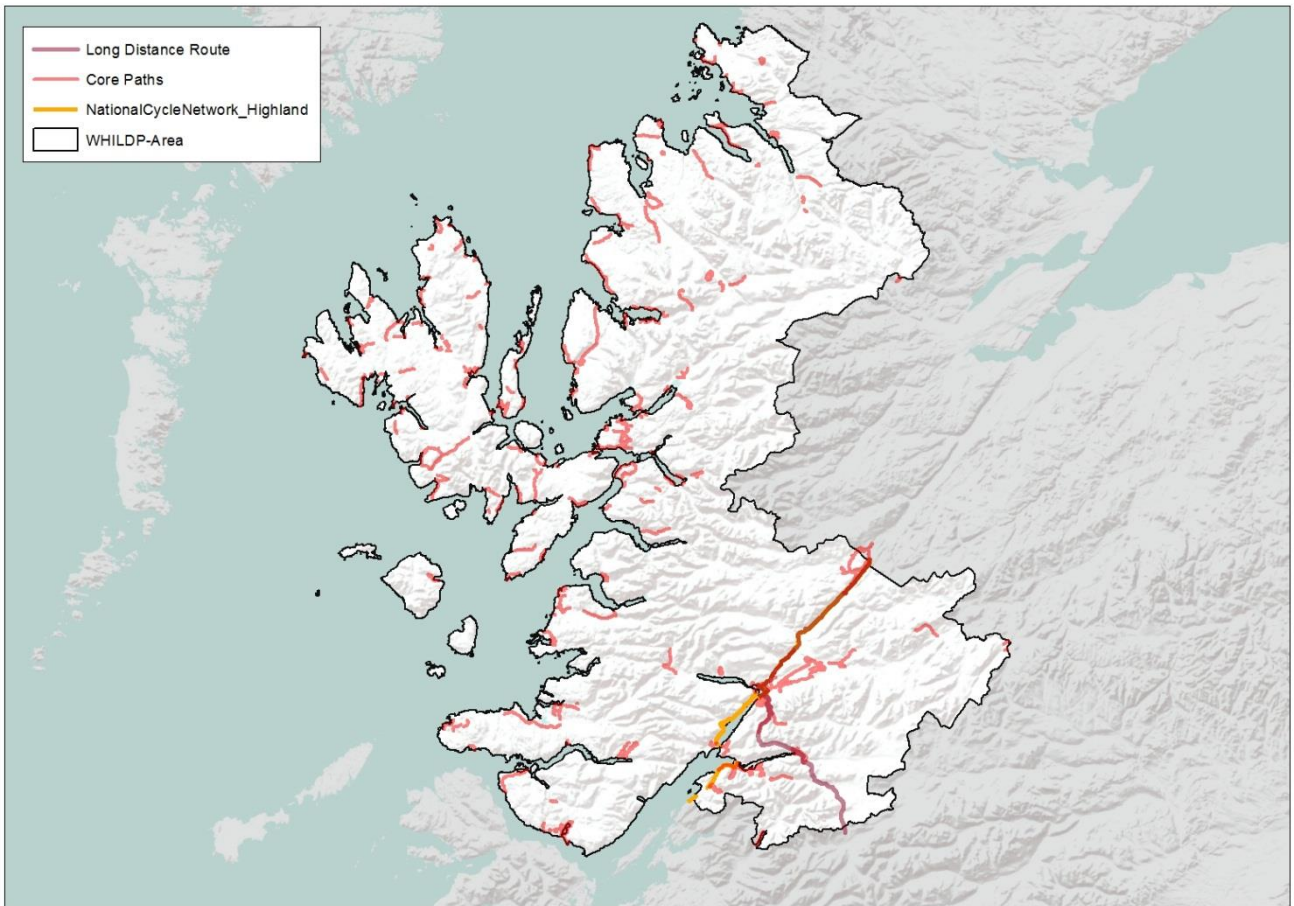
www.gov.scot/Topics/Statistics/16002

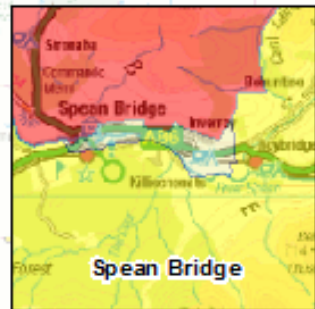
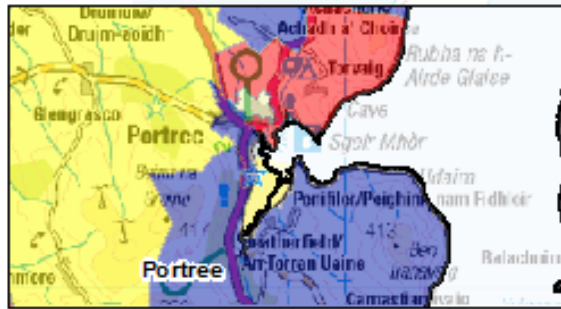
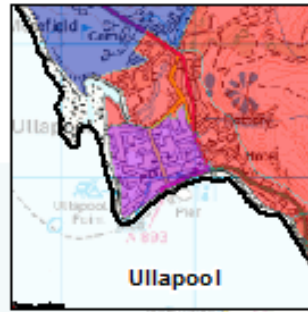
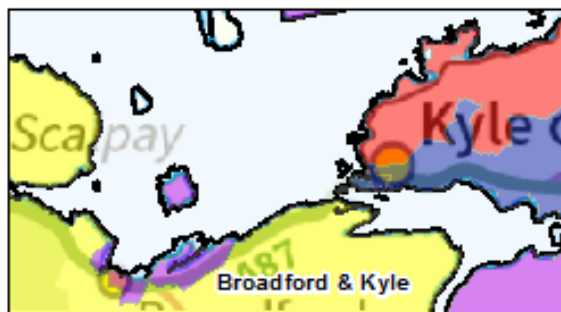
SNH - [Attitudes to Greenspace in Scotland](#)

Footpath networks – Highlights the proportion of population living within 200m of a footpath.

Highlights the proportion of population who live within 200m of open space

Open Space

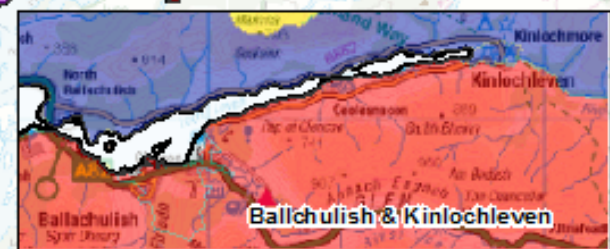
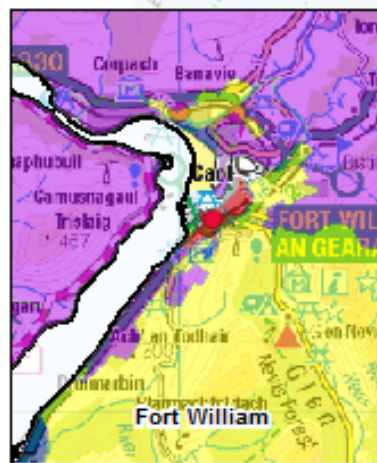




Legend

population change percent

- 17% to -3%
- 3% to +4%
- 3% to 13%
- 13% to 26%
- 26% to 41%



Percentage Change in the Total Population, 2003 to 2013 by Data Zone

431 Date: 19/02/16

1:1,400,000

0 12.5 25 Kilometers

1 cm = 14,000 meters

© Crown copyright. All rights reserved 100023369



Air	Key Information	Data Source
2013 Air Quality Progress Report	<p>Generally the air quality in the Highland Council area is good.</p> <p>It is however considered that significant effects are most likely in the Fort William area as this is a relatively industrial town, with a number of existing businesses having air stack discharges, and it has a relative concentration of traffic.</p>	Air Quality Progress Report (2013)

Number of Air Quality Management Areas (AQMA) in Highland

None at present

<http://www.scottishairquality.co.uk/>

Water	Key Information	Data Source
Flooding likelihood	<p>Within nearly all the main towns and villages there are areas which are at risk of flooding and that both coastal and fluvial flood risk can be an issue in the WHILDP area.</p>	<p>SEPA flood risk management maps</p> <p>Strategic Flood Risk Assessment - SEPA technical guidance to support Development Planning</p>

Water Quality

- Isle of Skye- contains 16 'high' quality classified water bodies; 28 'good' status water bodies and 1 'moderate' water body.
- Fort William Coastal- contains 1 'good' quality water body.
- Appin Coastal- contains 1 'high' quality water body; 6 'good' quality classified water bodies and 2 'moderate' water bodies.
- Ardgour Coastal- contains 7 'good' quality water bodies; contains 5 'moderate' quality water bodies.
- Ardnamurchan Coastal- contains 2 'high' quality water bodies; 13 'good' quality water bodies; 4 'moderate' water bodies.
- Minch Coastal- contains 14 'high' quality water bodies; 43 'good' quality water bodies; 3 'moderate' quality water bodies and 5 'poor' water bodies.
- Rum Coastal- contains 1 'high' quality water body.
- River Broom- 5 natural water bodies; 3 good status; 1 moderate and one poor.
- River Carron- 9 natural water

[River Basin Management Plans](#)

SEPA

<http://www.sepa.org.uk/environment/water/monitoring>

[SEPA Water Quality Classifications](#)

bodies; 1 high status; 6 good status and 2 moderate status.

- River Eive- 5 natural water bodies; 5 good status.
- River Ewe- 22 natural water bodies; 5 high status; 13 good status; 2 moderate status; 1 poor status.
- River Laxford- 8 natural water bodies; 1 high status; 7 good status.
- River Leven- 8 natural water bodies; 6 good status; 1 moderate status and 1 bad status.
- River Ling- 3 natural water bodies; 1 good status; 1 moderate and 1 poor.
- River Lochy- 52 natural water bodies; 2 high quality status; 40 good quality; 3 moderate; 3 poor and 4 bad.
- River Morar- 7 natural water bodies; 1 high quality status; 5 good and 1 moderate.
- River Shiel- 10 natural water bodies; 6 good status; 1 moderate and 2 poor.

<p>Hydro-power</p>	<p>Over 80 hydro-powered stations in Highlands and Islands</p> <p>More than half of Scotland's 145 hydroelectric schemes are in the Highlands and Islands area</p>	<p>Hi Energy http://www.hi-energy.org.uk/hydroenergy.html</p>
<p>Wave and tidal renewable energy</p>	<p>Around 10% of Europe's total wave resource flows in the seas surrounding the Highlands and Islands of Scotland. It is estimated that 14 gigawatts of recoverable energy lie off the area's western and northern flanks.</p>	<p>Hi Energy http://www.hi-energy.org.uk/Renewables/Tidal-Energy.htm</p> <p>www.hi-energy.org.uk/Renewables/Wave-Energy.htm</p>
<p>Ground Water and River Levels</p>		<p>SEPA River Levels http://www.sepa.org.uk/water/river_levels.aspx</p> <p>Centre for Hydrology and Ecology. National Water Archive; http://www.ceh.ac.uk/data/NWA.htm</p> <p>Scotland's River Basin management plan RBMP Interactive Map http://gis.sepa.org.uk/rbmp/</p>

Climatic Factors	Key Information	Data Source
Vulnerability to effects of climate change		<p>The Scottish Climate Change Impacts Partnership</p> <p>www.adaptationscotland.org.uk/1/1/0/Home.aspx</p> <p>Consideration of Climatic Factors within Strategic Environmental Assessment (SEA)</p> <p>www.scotland.gov.uk/Publications/2010/03/18102927/0</p> <p>SEPA flood risk management maps</p> <p>Marine Climate Change Impacts Partnership</p> <p>UKCP09 The climate of the United Kingdom and recent trends.</p> <p>ukclimateprojections.defra.gov.uk</p> <p>http://www.sniffer.org.uk/</p>
Energy consumption	Highland Council energy consumption is 22, 250GWH per annum.	<p>THC energy consumption</p> <p>www.highland.gov.uk/downloads/download/354/energy_consumption</p>
Energy from renewable sources	<p>Renewable Energy installations in Highland Council Building is 1200KWh</p> <p>Promotion of renewable energy.</p>	<p>Renewable energy in THC buildings</p> <p>www.highland.gov.uk/info/1034/land_and_property/271/renewable_energy_in_our_buildings</p> <p>Highland Council Renewable Energy Strategy</p> <p>www.highland.gov.uk/info/198/planning_-_long_term_and_area_policies/152/renewable_energy</p> <p>Community Benefits from Renewables</p> <p>Highland Council Wind Turbine Map</p>

Air Quality Management Areas (AQMA)

None at present in the West Highland and Islands area.

<http://www.scottishairquality.co.uk/>

Travel

44% of people within Highland taking public transport or active travel means to work and study.

Local Transport Strategy and Active Travel Plans

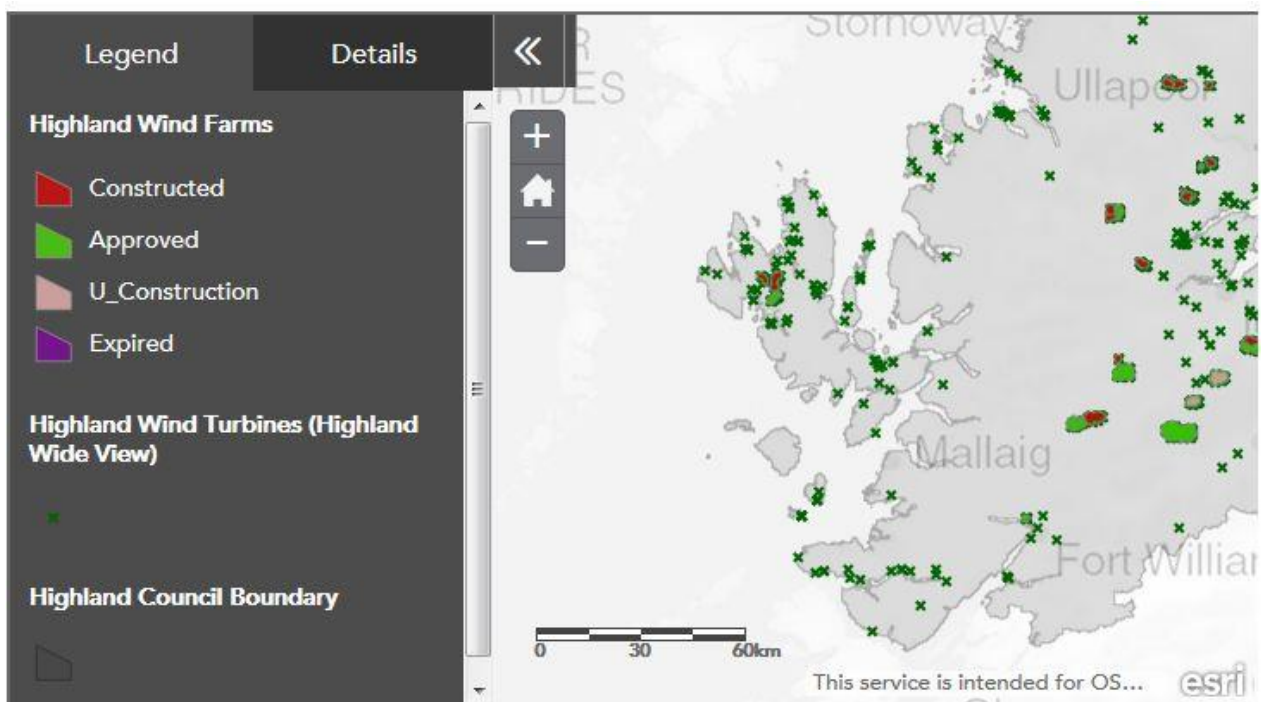
Active travel audits for Wick and Thurso which includes a variety of baseline information.

www.highland.gov.uk/info/1523/transport_and_streets/121/local_transport_planning

Improve the use of sustainable building techniques

Promotion of Sustainable design in the Community.

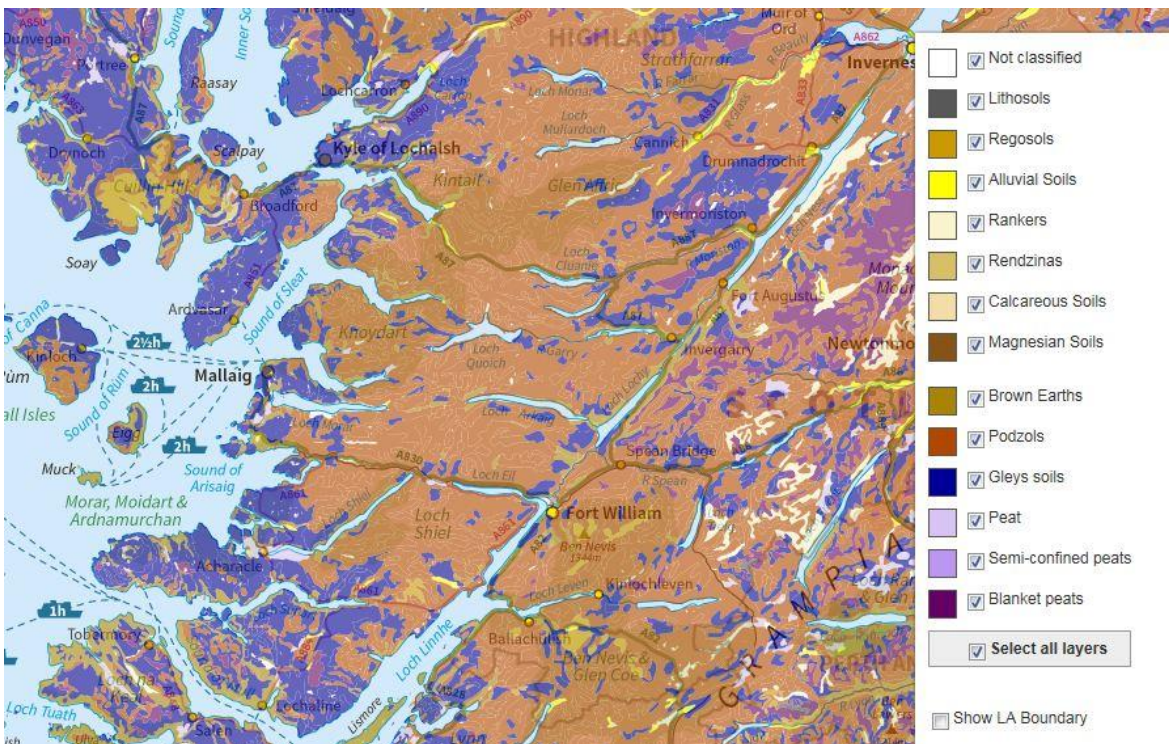
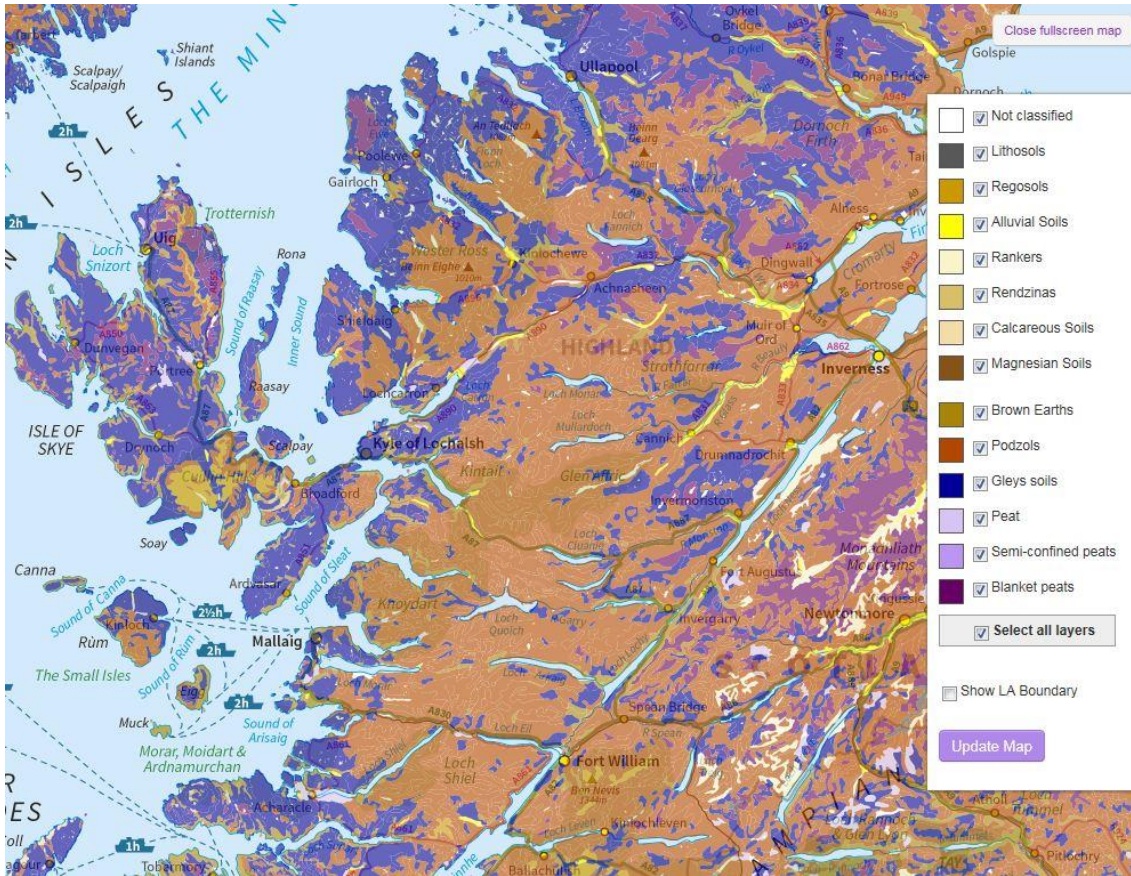
[Designing for Sustainability in the Highlands](#)



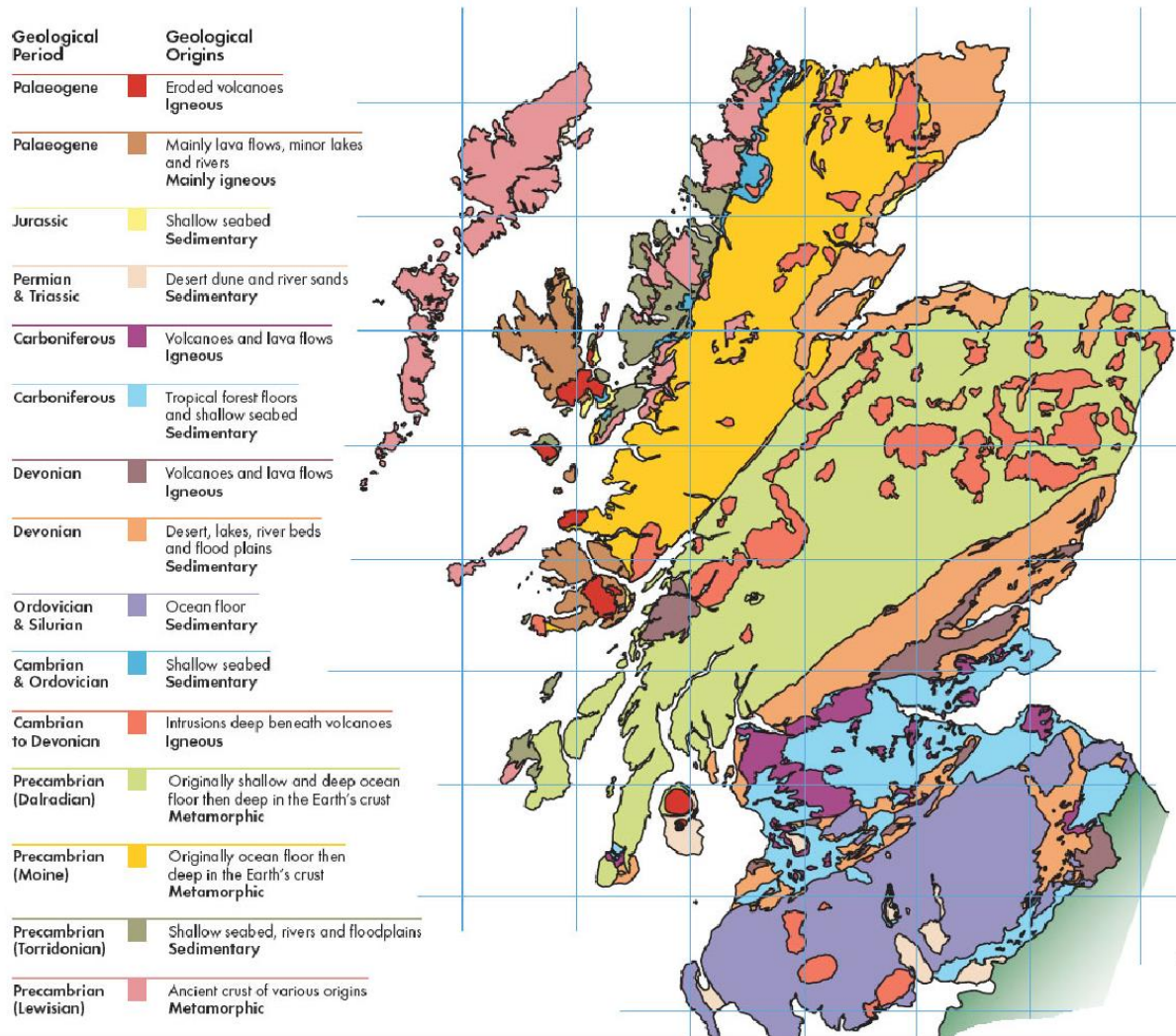
Highland Windfarm Activity November 2015

Material Assets	Key Information	Data Source
Vacant & Derelict Land Register		Scottish Vacant and Derelict Land Survey
Waste Generation and Management		Scotland's Zero Waste Plan Scotland's Environmental Waste Discovery Data Scottish Waste Sites and Capacity Tool Household Waste Summary Data THC Waste Data Report www.highland.gov.uk/downloads/file/13531/annual_waste_data_report_2011_to_2013
Core Path Plan & Rights of Way		The Highland Council (THC) /Scotways www.highland.gov.uk/info/1457/tourism_and_visitor_attractions/163/paths_in_the_highlands
Land Use Plan & Open Space Audit		THC Open Space Supplementary Guidance and Greenspace Audit: www.highland.gov.uk/info/178/
Soil	Key Information	Data Source
Erosion	Distance and numbers of path where erosion or poor path construction has or is reducing soil quality and quantity. No data available but possible monitoring of core paths in the future can be used.	The Highland Council Core Paths Plan
Contaminated Land		Highland Council Contaminated Land Database. Scottish Vacant and Derelict Land Survey
Agricultural Land	Land use, employment and production information. Crofting in Highland Prime agricultural land (considered to be 3.2 and above)	National Farmers Union Scotland; http://www.nfus.org.uk/facts_index.asp Scotland's Soils http://www.soils-scotland.gov.uk/data/lca250k

		<p>Crofting Commission Annual Report www.crofting.scotland.gov.uk/documents.asp?catid=29</p>
Soil Quality	Key indicators of soil quality	<p>Soil Indicators for Scottish Soils sifss.hutton.ac.uk/</p>
Carbon Rich Soils	<p>Peat soils make up 22.5% of Scotland's soil.</p> <p>Scottish soils are estimated to contain approximately 3000 million tonnes carbon, which is the majority of the soil carbon stock of the whole of the UK.</p>	<p>SNH www.snh.gov.uk/planning-and-development/advice-for-planners-and-developers/</p> <p>Scotland's Soils – survey data http://www.soils-scotland.gov.uk/data/soil-survey</p>
Geology		<p>http://www.scottishgeology.com/</p> <p>SNH</p> <p>GCR Sites</p>

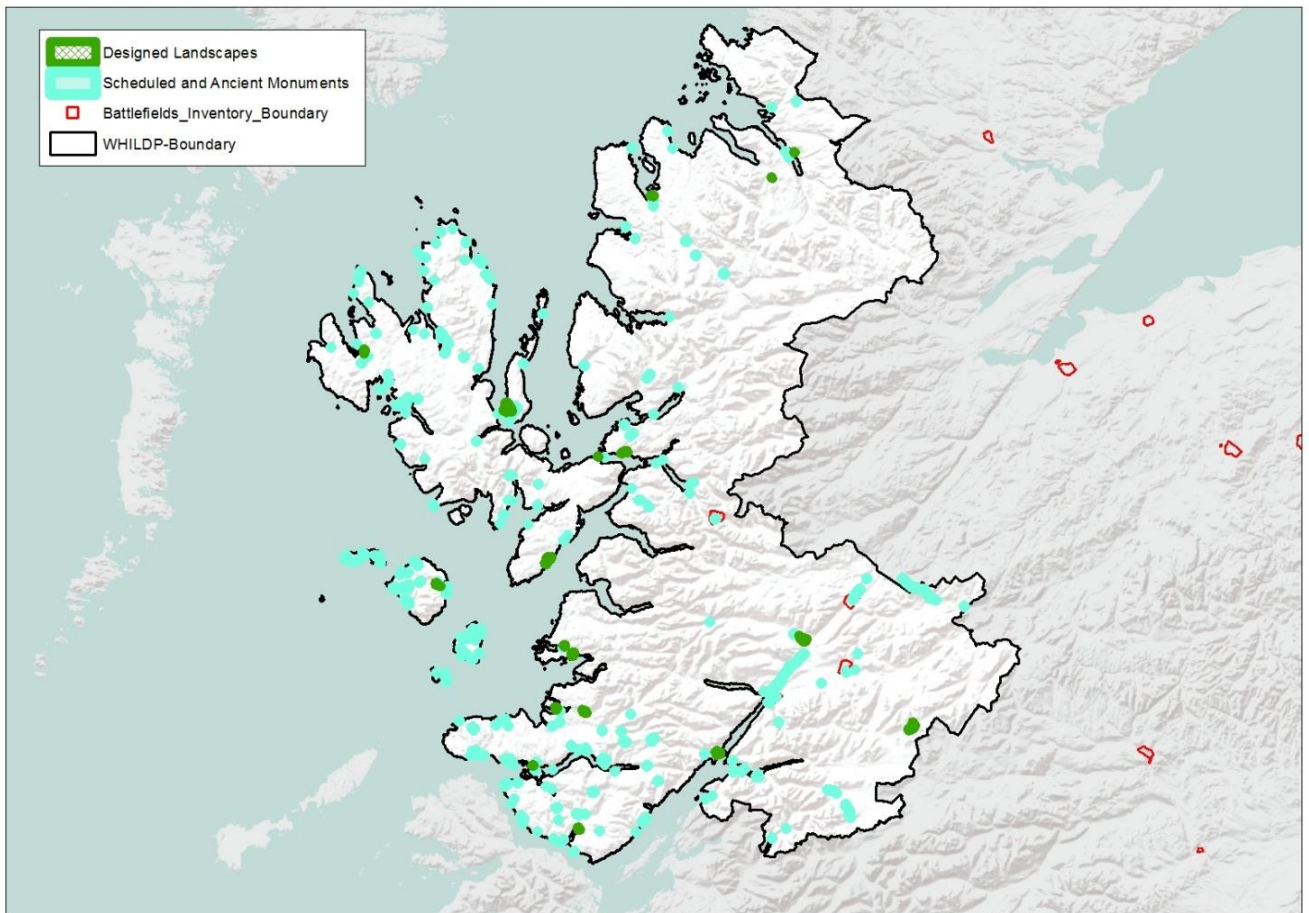
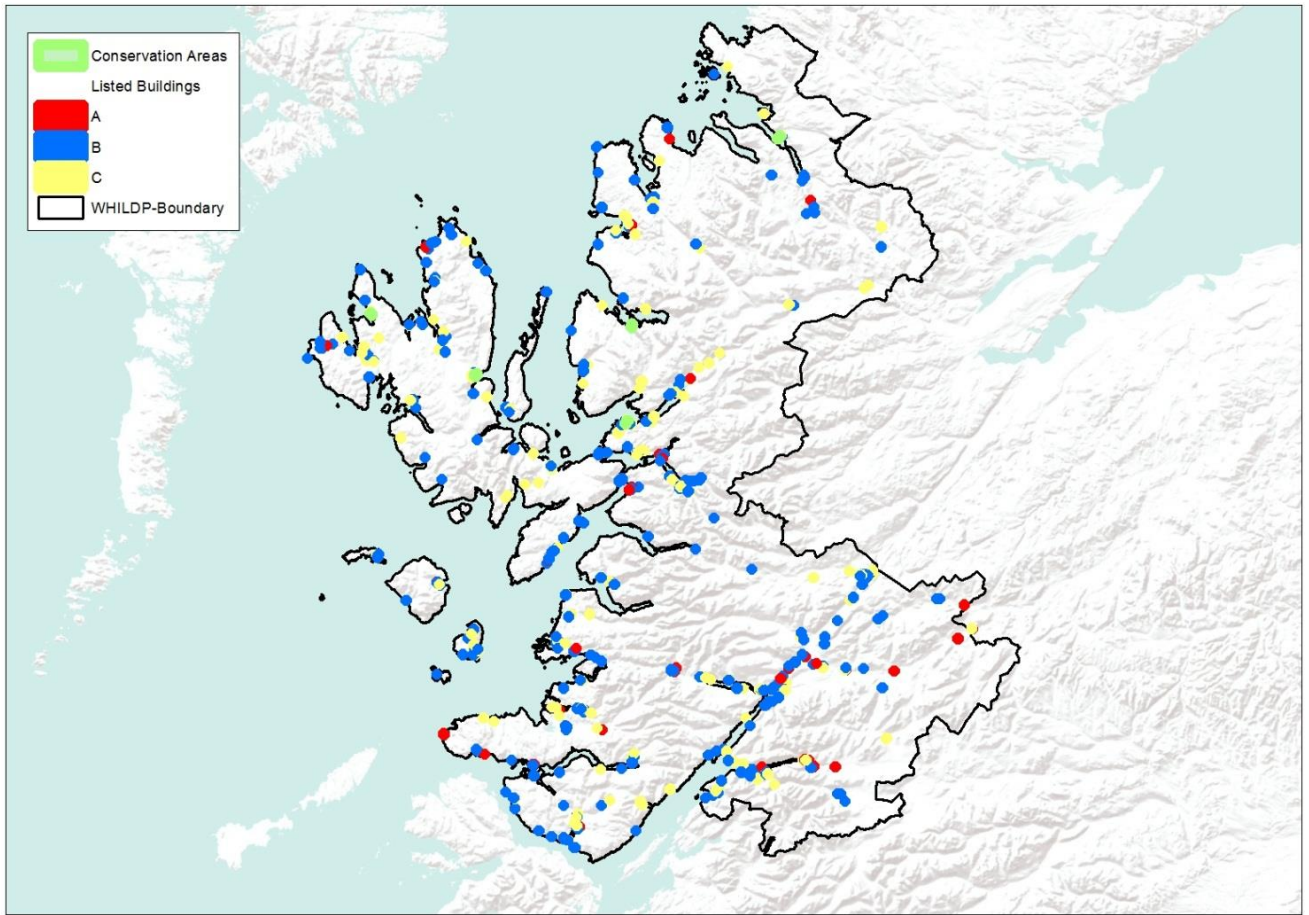


Map: Soil types in the West Highland and Islands area



Map: Simplified geological map illustrating the nature, age, origins and distribution of rocks

Cultural Heritage	Key Information	Data Source
Value and protect diversity and local distinctiveness.	Number of Landscape designations across the West Highland and Islands are: National Scenic Areas – 11 Wild Land Areas- 16 Special Landscape Areas- 15	GIS
Listed Buildings	Number of Listed buildings across West Highland and Islands are: A Listed - 45 B Listed - 347 C(S) Listed - 269	Historic Scotland data.historic-scotland.gov.uk/pls/htmlldb/f?p=2000:10:0
Schedule Monuments	Total number of Schedule Monuments in West Highland and Island is 273	Historic Scotland data.historic-scotland.gov.uk/pls/htmlldb/f?p=2000:10:0
Inventory Gardens and Designed Landscapes	There are 5 Inventory Gardens and Designed Landscapes in the Plan area.	Historic Scotland data.historic-scotland.gov.uk/pls/htmlldb/f?p=2000:10:0
Conservation areas	There are 5 conservation areas across the Plan area.	www.highland.gov.uk/info/192/planning_-_listed_buildings_and_conservation_areas/167/conservation/2
Building at Risk	There are 175 buildings on the Buildings at Risk register in Highland. Many of these are within the West Highland and Islands.	Buildings At Risk Register http://www.buildingsatrisk.org.uk/



Landscape	Key Information	Data Source
Retain and improve quality and quantity of publicly accessible open space.	There are 15 separate Landscape Character Types identified within West Highland and Islands.	Scottish Natural Heritage: Overview of Scotland's national programme of Landscape Character Assessment (2004) www.snh.gov.uk/protecting-scotlands-nature/looking-after-landscapes/lca/
National Scenic Areas	West Highland and Islands includes 11 National Scenic Areas – Scotland's finest landscapes.	SNH National Scenic Areas
Wild Land Areas	There are 16 Wild Land Areas identified in the WHILDP area that make up approx. 48% of the total Plan area.	SNH Wild Land Areas Highland Coastal Strategy
Coast		
Impact of Built development	Visual impact of built development	SNH's visual indicator of built development and land use change – http://www.snh.gov.uk/publications-data-and-research/trends/scotlands-indicators/natural-heritage-indicators
Special Landscape Areas	There are 15 SLAs wholly or partially within the Plan area.	SLA Citations www.highland.gov.uk/developmentplans

