

Local & National



Statutory Performance Indicators

2015/16

www.highland.gov.uk/performance

Benchmarking

What is the Local Government Benchmarking Framework (LGBF)?


Local councils across Scotland are required to publish their performance information using the LGBF each year. This ensures that councils report standard information on the services councils provide to local communities across Scotland. The indicators within the LGBF were selected through a wide consultation process to cover the major service areas of local authorities. The performance between all **32 Scottish Local Authorities** is reported in quartiles.



Children's Services

CHN1

How much does my council spend on primary schools?
£ per pupil
Highland £5,013.21




Scotland £4,733.06

£ Ranked **22** of **32**

CHN2

How much does my council spend on secondary schools?
£ per pupil
Highland £7,102.76




Scotland £6,736.84

£ Ranked **25** of **32**

CHN3

How much does my council spend on pre-school education?
£ per pre-school pupil
Highland £3,679.87

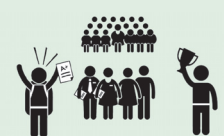


Scotland £3,853.71

£ Ranked **14** of **32**

CHN4

What percentage of secondary school pupils achieved 5 plus awards at SCQF level 5 or higher?
%
Highland 59%




Scotland £59%

👍 Ranked **14** of **32**

CHN5

What % of secondary school pupils achieved 5 plus awards at SCQF level 6 at the end of sixth year?
%
Highland 30%




Scotland 33%

👍 Ranked **21** of **32**

CHN6

What % of secondary school pupils from deprived areas achieved 5 plus awards at SCQF level 5 at the end of sixth year?
%
Highland 34%




Scotland 39%

👍 Ranked **22** of **32**

CHN7

What % of secondary school pupils from deprived areas achieved 5 plus awards at SCQF level 6 at the end of sixth year?
%
Highland 13%



Scotland 15%

👍 Ranked **18** of **32**

CHN8a

How much does my council spend on providing residential accommodation for 'looked after children'?
£ per child per week
Highland £9,455.84




Scotland £3,170.96

2014/15 Figures

£ Ranked **2** of **32**

CHN8b

How much does my council spend on providing fostering/family placements for 'looked after children'?
£ per child per week
Highland £403.31




Scotland £278.30

2014/15 Figures

£ Ranked **2** of **32**

CHN9

How many 'looked after children' are being cared for in foster/family placements rather than residential accommodation?
%
Highland 87.1%



Scotland 90.1%

2014/15 Figures

👍 Ranked **13** of **32**

CHN10

How satisfied are residents with local schools?
%
Highland 79.3%




Scotland 78.0%

👍 Ranked **21** of **32**

CHN11

What % of pupils enter a positive destination after leaving school?
%
Highland 93.7%




Scotland 92.9%

2014/15 Figures

👍 Ranked **14** of **32**

CHN12a

Average total points awarded for levels of attainment achieved - Overall average tariff
Average tariff score
Highland 877.02




Scotland 875.23

👍 Ranked **15** of **32**

CHN12b

Average total points awarded for levels of attainment achieved - SIMD Quintile 1
Average tariff score
Highland 543




Scotland 600

👍 Ranked **20** of **32**

CHN12c

Average total points awarded for levels of attainment achieved - SIMD Quintile 2
Average tariff score
Highland 640




Scotland 739

👍 Ranked **30** of **32**

CHN12d

Average total points awarded for levels of attainment achieved - SIMD Quintile 3
Average tariff score
Highland 876



Scotland 862

👍 Ranked **17** of **32**

CHN12e

Average total points awarded for levels of attainment achieved - SIMD Quintile 4

Average tariff score

Highland 968



Scotland 997



Ranked **20** of **32**

CHN12f

Average total points awarded for levels of attainment achieved - SIMD Quintile 5

Average tariff score

Highland 1,177



Scotland 1,195



Ranked **11** of **32**

Corporate Services

CORP1

How much of my council's total running costs is spent on administrative support services?

%

Highland 7.7%



Scotland 5.5%



Ranked **29** of **32**

CORP2

How much does my council spend on supporting elected members?

£ per 1,000 people

Highland £35,338.09



Scotland £29,980.64



Ranked **23** of **32**

CORP3b

How many women are in top 5% earners?

%

Highland 47%



Scotland 52%



Ranked **26** of **32**

CORP3c

What is the gender pay gap?

%

Highland 7.20%



Scotland 4.99%



Ranked **23** of **32**

CORP4

How much does my council spend on collecting council tax?

£ per home

Highland £10.68



Scotland £10.34



Ranked **20** of **32**

CORP5b2

How long does it take my council to attend a domestic noise complaint on average?

Hours

Highland 53.50 hours



Scotland 70.30 hours



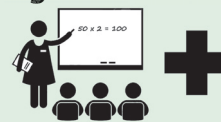
Ranked **23** of **32**

CORP6a

What is the level of sickness absence for teachers in my council?

Average number of days per teacher

Highland 6.08 days



Scotland 6.12 days



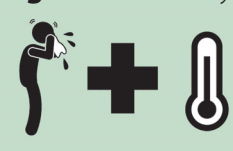
Ranked **16** of **32**

CORP6b

What is the level of sickness absence in my council?

Average number of days per employee (non-teachers)

Highland 9.61 days



Scotland 10.63 days



Ranked **6** of **32**

CORP7

How efficient is my council at collecting council tax?

%

Highland 95.6%



Scotland 96.2%



Ranked **20** of **32**

CORP8

How efficient is my council at paying invoices on time?

%

Highland 91.3%



Scotland 92.8%



Ranked **19** of **32**

C-AST1

How many council buildings are suitable for their current use?

%

Highland 64.2%



Scotland 79.6%



Ranked **31** of **32**

C-AST2

How many council buildings are in a satisfactory condition?

%

Highland 80.3%

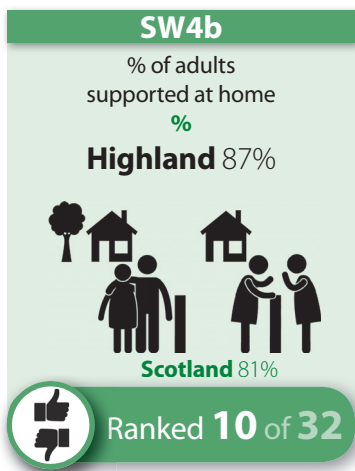
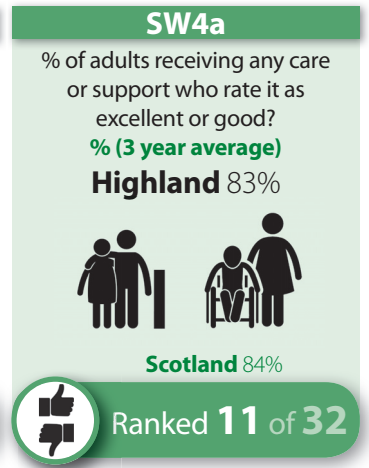
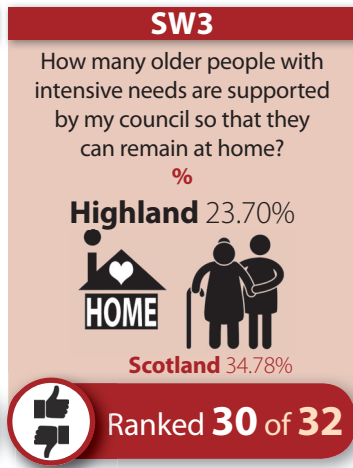
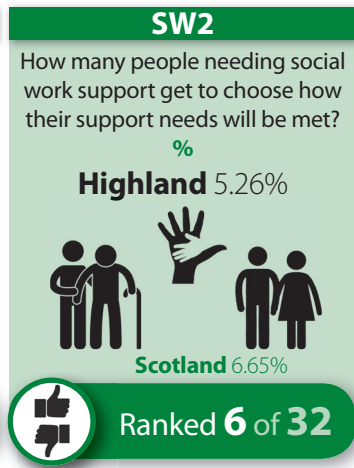


Scotland 81.5%

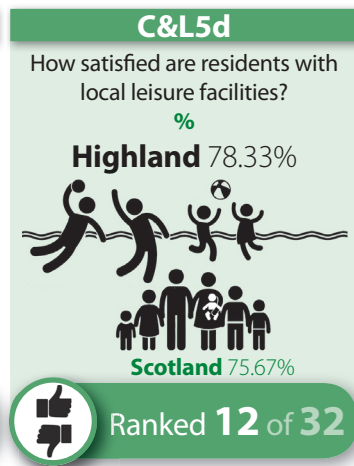
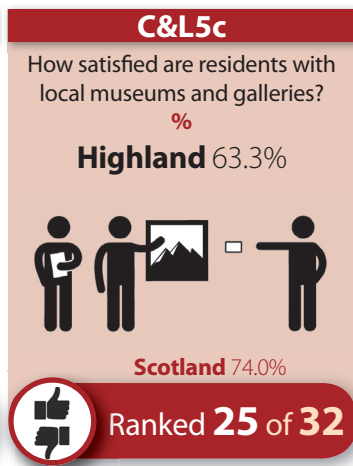
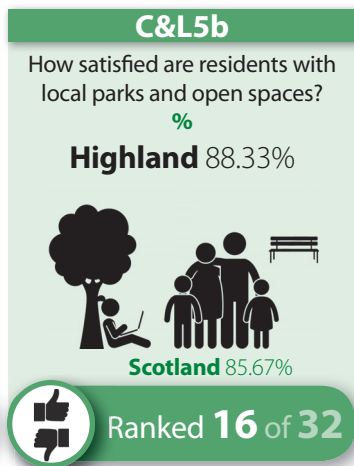
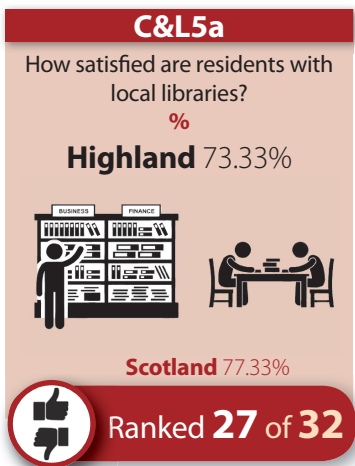


Ranked **22** of **32**

Adult Social Care Services



Culture and Leisure Services



Environmental Services

ENV1a

How much does my council spend on refuse collection (net)?
£ per premise
Highland £94.44



Scotland £63.44

£ Ranked **32** of **32**

ENV2a

How much does my council spend on waste disposal (e.g. recycling and landfill) (net)?
£ per premise
Highland £107.57



Scotland £97.02

£ Ranked **23** of **32**

ENV3a

How much does my council spend on street cleaning?
£ per 1,000 people
Highland £11,418



Scotland £15,480

£ Ranked **11** of **32**

ENV3c

How clean are my local streets?
%
Highland 93%



Scotland 93%

👍 Ranked **21** of **32**

ENV4a

How much does my council spend maintaining the condition of my roads?
£ per kilometre
Highland £6,411




Scotland £10,791

£ Ranked **7** of **32**

ENV4b

How many of my local A class roads are in need of repair?
%
Highland 27%




Scotland 29%

👍 Ranked **19** of **32**

ENV4c

How many of my local B class roads are in need of repair?
%
Highland 34.7%




Scotland 34.8%

👍 Ranked **24** of **32**

ENV4d

How many of my local C class roads are in need of repair?
%
Highland 39.0%



Scotland 34.7%

👍 Ranked **22** of **32**

ENV4e

How many of my local unclassified class roads are in need of repair?
%
Highland 46.4%



Scotland 40.1%

👍 Ranked **26** of **32**

ENV5a

How much does my council spend on providing trading standards?
£ per 1,000 people
Highland £4,169.00



Scotland £5,873.30

£ Ranked **8** of **32**

ENV5b

How much does my council spend on providing environmental health
£ per 1,000 people
Highland £18,914




Scotland £16,849

£ Ranked **24** of **32**

ENV6

How much household waste is recycled by my council?
%
Highland 45.5%




Scotland 44.3%

👍 Ranked **20** of **32**

ENV7a

How satisfied are residents with local refuse collection?
%
Highland 87.7%




Scotland 83.0%

👍 Ranked **13** of **32**

ENV7b

How satisfied are residents with local street cleanliness?
%
Highland 73.00%



Scotland 73.67%

👍 Ranked **21** of **32**

Housing Services

HSN1

How much rent is owed to the council due to arrears (gross)?
%

Highland 4.76%



Scotland 6.25%

£ Ranked **5** of **32**

HSN2

How much rent was lost due to empty properties?
%

Highland 1.00%



Scotland 1.05%

£ Ranked **16** of **32**

HSN3

What is the quality and standard of housing provided by my council measured by the Scottish Housing Quality Standard?
%

Highland 90.83%



Scotland 92.50%

Ranked **22** of **32**

HSN4

How long does it take my council to complete non emergency repairs?
average number of days

Highland 7.53 days




Scotland 9.38 days

Ranked **7** of **32**

HSN5

How energy efficient is the housing provided by my council as measured by the Scottish Housing Quality Standard?
%

Highland 92.36%



Scotland 96.16%


Ranked **23** of **32**

Economic Development

ECON1

How many unemployed people have been assisted into work by my council?
%

Highland 5.8%



Scotland 13.9%

Ranked **25** of **32**

ECON2

Cost per planning application?
£

Highland £4,286.70



Scotland £4,832.00

£ Ranked **15** of **32**

ECON3

Average time (weeks) per Planning Application
weeks

Highland 10.7




Scotland 11.2

Ranked **21** of **32**

ECON4

Total direct spend with Highland Small/Medium Enterprises to increase by 5% by 2017
%

Highland 23.1%



Scotland 19.7%

Ranked **11** of **32**

ECON5

Number of Business Gateway start-ups per 10,000 population
Highland 10.8



Scotland 16.9

Ranked **29** of **32**