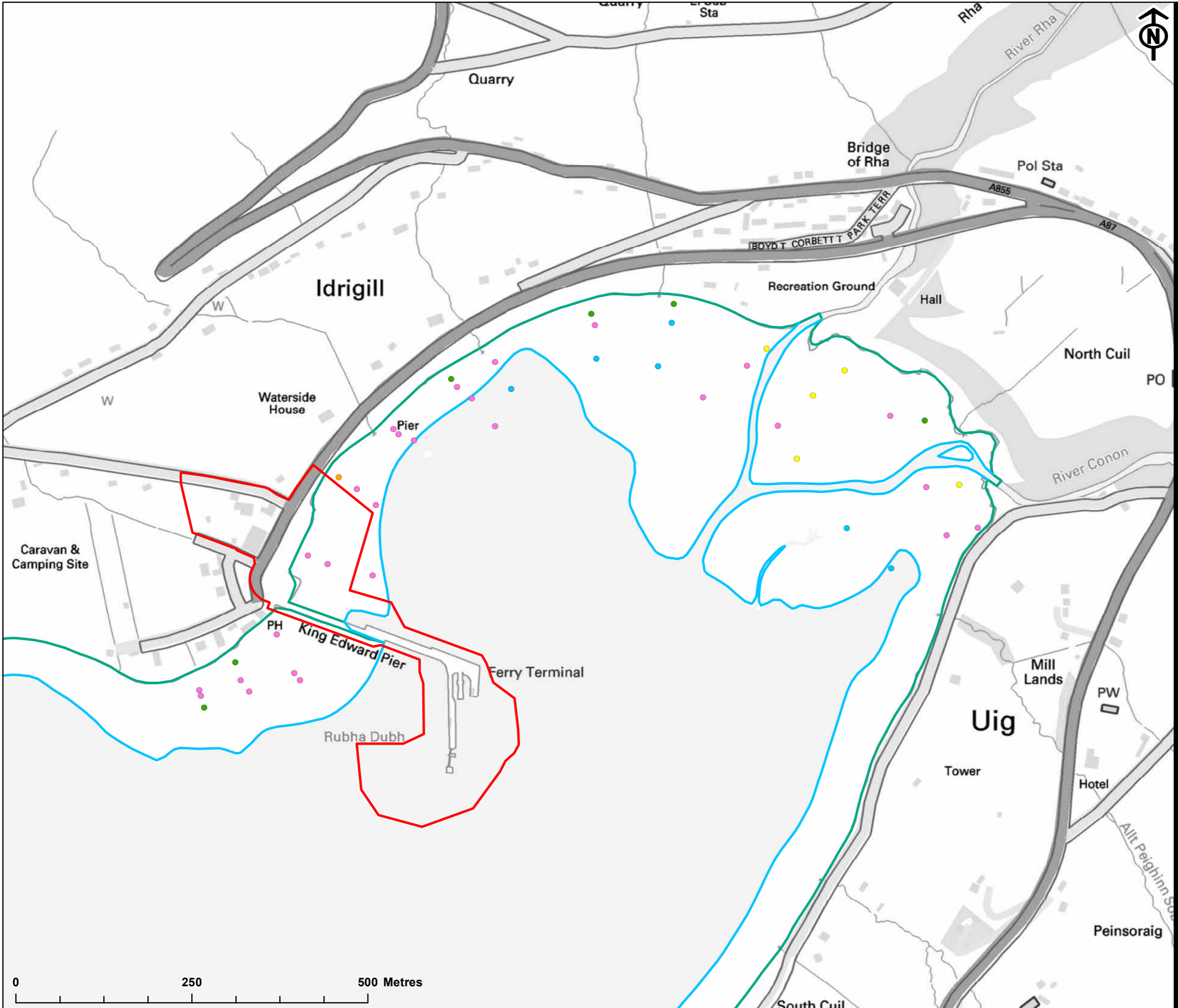


- KEY:
- Proposed Development Site
 - Sea of Hebrides Proposed Marine Protected Area
 - Special Areas of Conservation
 - Marine Conservation Areas
 - Mean Low Water Springs

This drawing has been produced for the use of AECOM's client. It may not be used, modified or relied upon by third parties, except as agreed by AECOM or as required by law. AECOM accepts no responsibility, and denies any liability whatsoever, to any party that uses or relies upon this drawing without AECOM's express written consent. Do not scale this document.



PROJECT
 Uig Harbour Redevelopment
 Environmental Impact Assessment
 CLIENT



KEY:
 Proposed Development Site
 Mean High Water Springs
 Mean Low Water Springs

Intertidal Walkover Survey Results

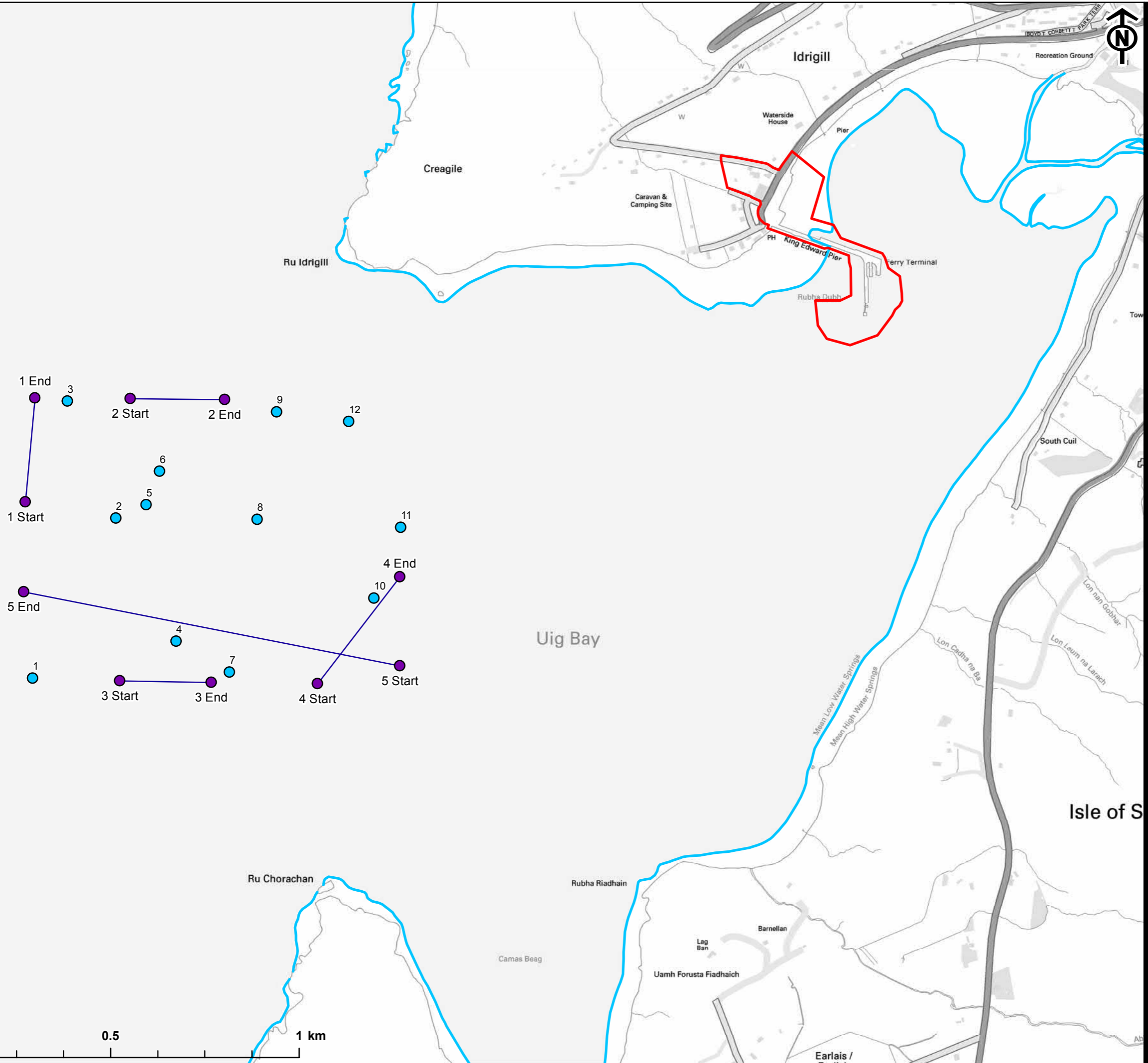
- Barnacles and fucoids on moderately exposed shores
- Fucoids on sheltered marine shores
- Fucoids on sheltered marine shores & Coastal saltmarshes and saline reedbeds
- Polychaete/bivalve-dominated muddy sand shores
- Littoral mixed sediments

PROJECT NUMBER
 60536743
 SHEET TITLE
 Figure 12.1 Intertidal walkover survey area and sampling stations: Recorded biotope classifications
 SHEET NUMBER
 1 of 1

This drawing has been produced for the use of AECOM's client. It may not be used, modified or relied upon by third parties, except as agreed by AECOM or as required by law. AECOM accepts no responsibility, and denies any liability whatsoever, to any party that uses or relies upon this drawing without AECOM's express written consent. Do not scale this document.



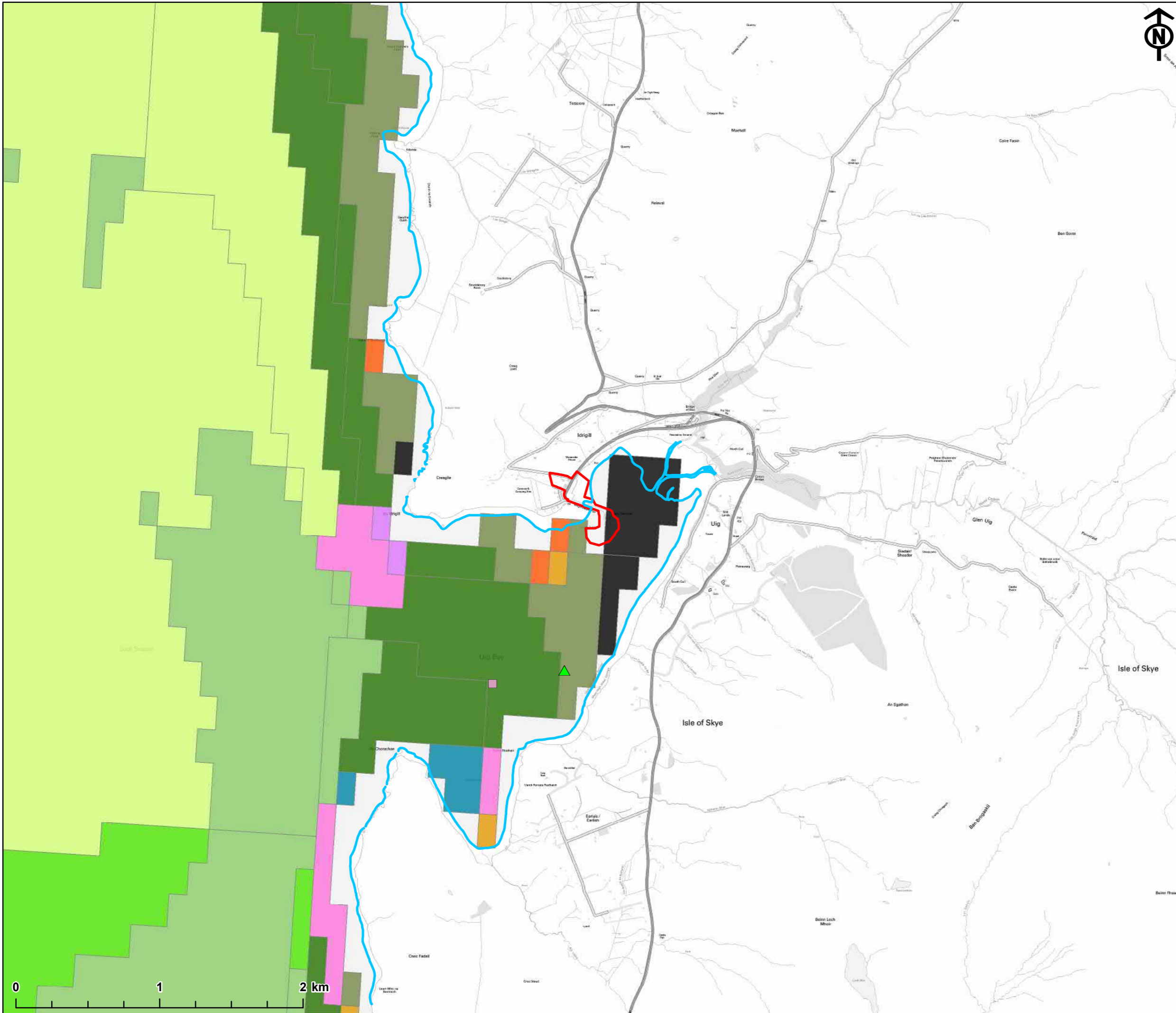
- KEY:
- Proposed Development Site
 - Mean Low Water Springs
 - ROV Transects
 - ROV Transect Start and End Points
 - Grab Sampling Locations



Project Management Initials: FA Designer: NS Checked: KM Approved: DH

Scale: 1:10,000 @ A3

This drawing has been produced for the use of AECOM's client. It may not be used, modified or relied upon by third parties, except as agreed by AECOM or as required by law. AECOM accepts no responsibility, and denies any liability whatsoever, to any party that uses or relies upon this drawing without AECOM's express written consent. Do not scale this document.



KEY:

Proposed Development Site

Mean Low Water Springs

Priority Marine Features

▲ Kelp and seaweed communities on sublittoral sediment

Borrowed Mud- Seapens and burrowing megafauna in circalittoral fine mud

Broad habitat – Broad-Scale Predictive Habitat Map EUSeaMap2 September 2016. Habitat Type:

A3.1: Atlantic and mediterranean high energy infralittoral rock

A3.2: Atlantic and mediterranean moderate energy infralittoral rock

A4.1: Atlantic and mediterranean high energy circalittoral rock

A4.2: Atlantic and mediterranean moderate energy circalittoral rock

A4.3: Atlantic and mediterranean low energy circalittoral rock

A5.33 or A5.34: Infralittoral sandy mud or infralittoral fine mud

A5.35: Circalittoral sandy mud

A5.35 or A5.36: Circalittoral sandy mud or Circalittoral fine mud

A5.36: Circalittoral fine mud

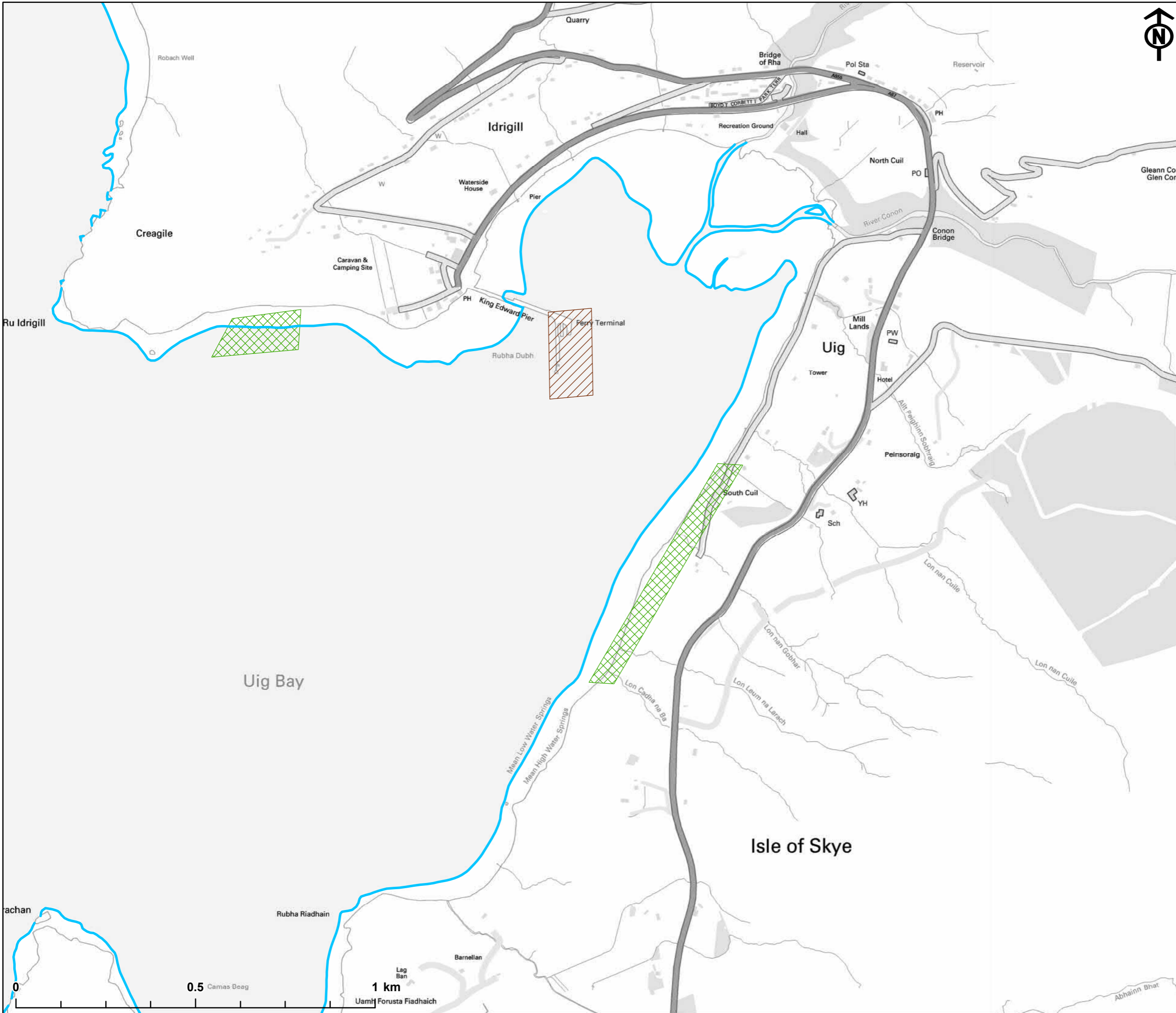
A5.37: Deep Circalittoral mud

Infralittoral seabed

This drawing has been produced for the use of AECOM's client. It may not be used, modified or relied upon by third parties, except as agreed by AECOM or as required by law. AECOM accepts no responsibility, and denies any liability whatsoever, to any party that uses or relies upon this drawing without AECOM's express written consent. Do not scale this document.

Project Management Initials: FA Designer: NS Checked: KM Approved: DH

Scale: 1:10,000 @ A3



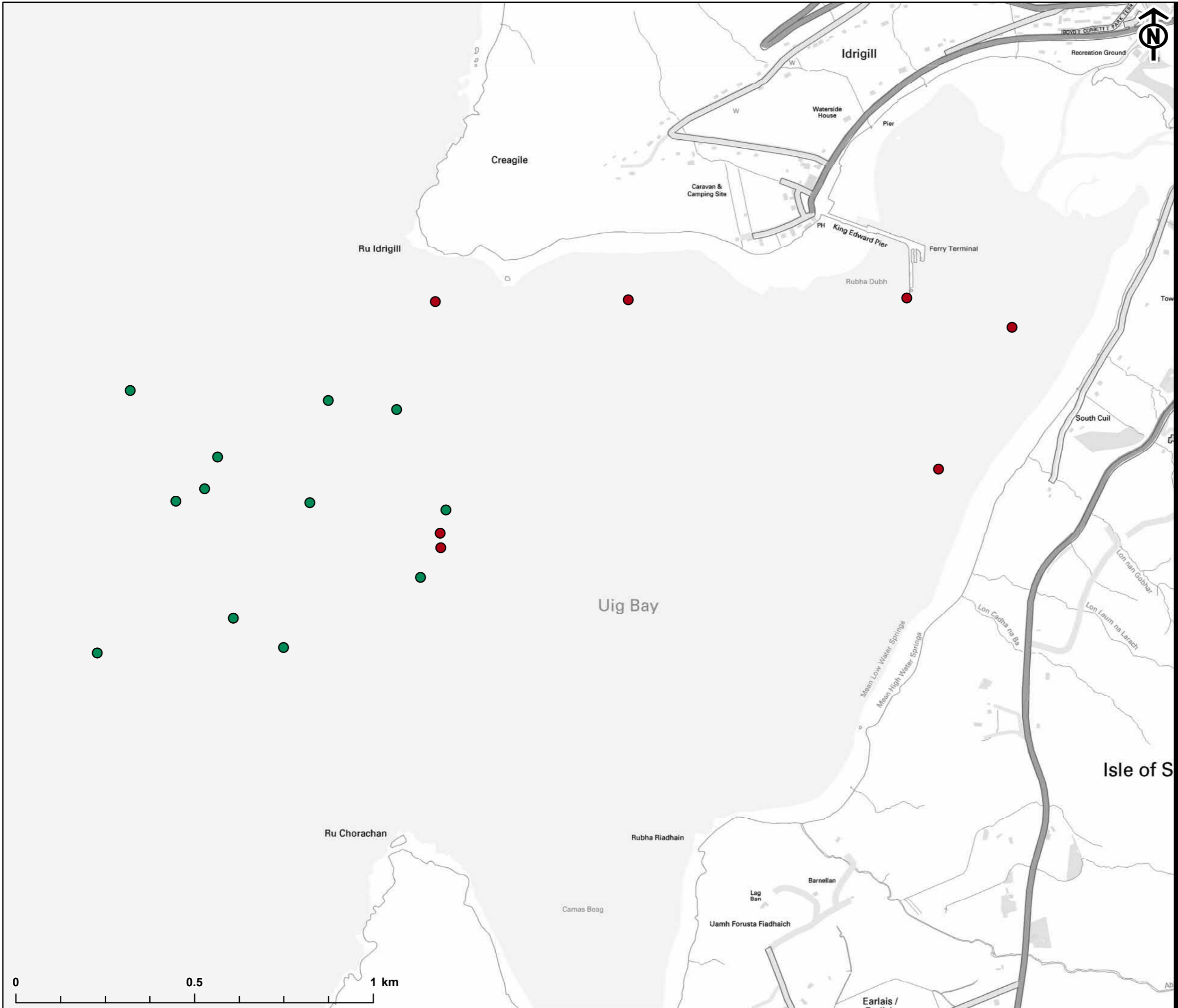
PROJECT
 Uig Harbour Redevelopment
 Environmental Impact Assessment
CLIENT



- KEY:**
- Mean Low Water Springs
 - 2015 Beach Recharge Locations
 - 2015 Maintenance Dredging Location

PROJECT NUMBER
 60536743
SHEET TITLE
 Figure 12.4 2015 Maintenance Dredging and Beach Recharge Locations
SHEET NUMBER
 1 of 1

This drawing has been produced for the use of AECOM's client. It may not be used, modified or relied upon by third parties, except as agreed by AECOM or as required by law. AECOM accepts no responsibility, and denies any liability whatsoever, to any party that uses or relies upon this drawing without AECOM's express written consent. Do not scale this document.



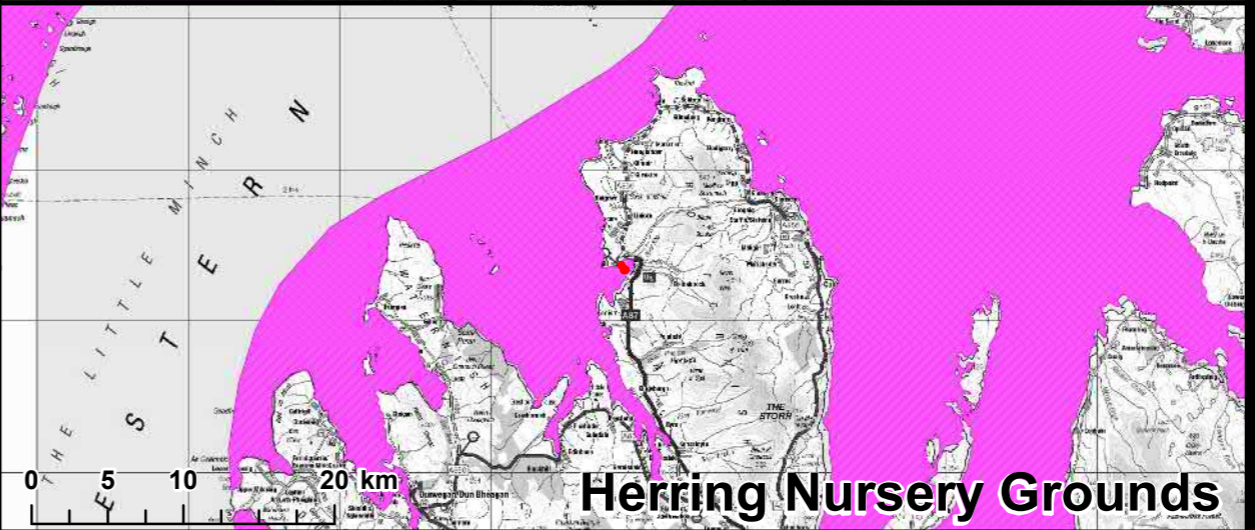
- KEY:
- Benthic survey sampling locations 2018
 - Benthic survey sampling locations 2016

This drawing has been produced for the use of AECOM's client. It may not be used, modified or relied upon by third parties, except as agreed by AECOM or as required by law. AECOM accepts no responsibility, and denies any liability whatsoever, to any party that uses or relies upon this drawing without AECOM's express written consent. Do not scale this document.



KEY

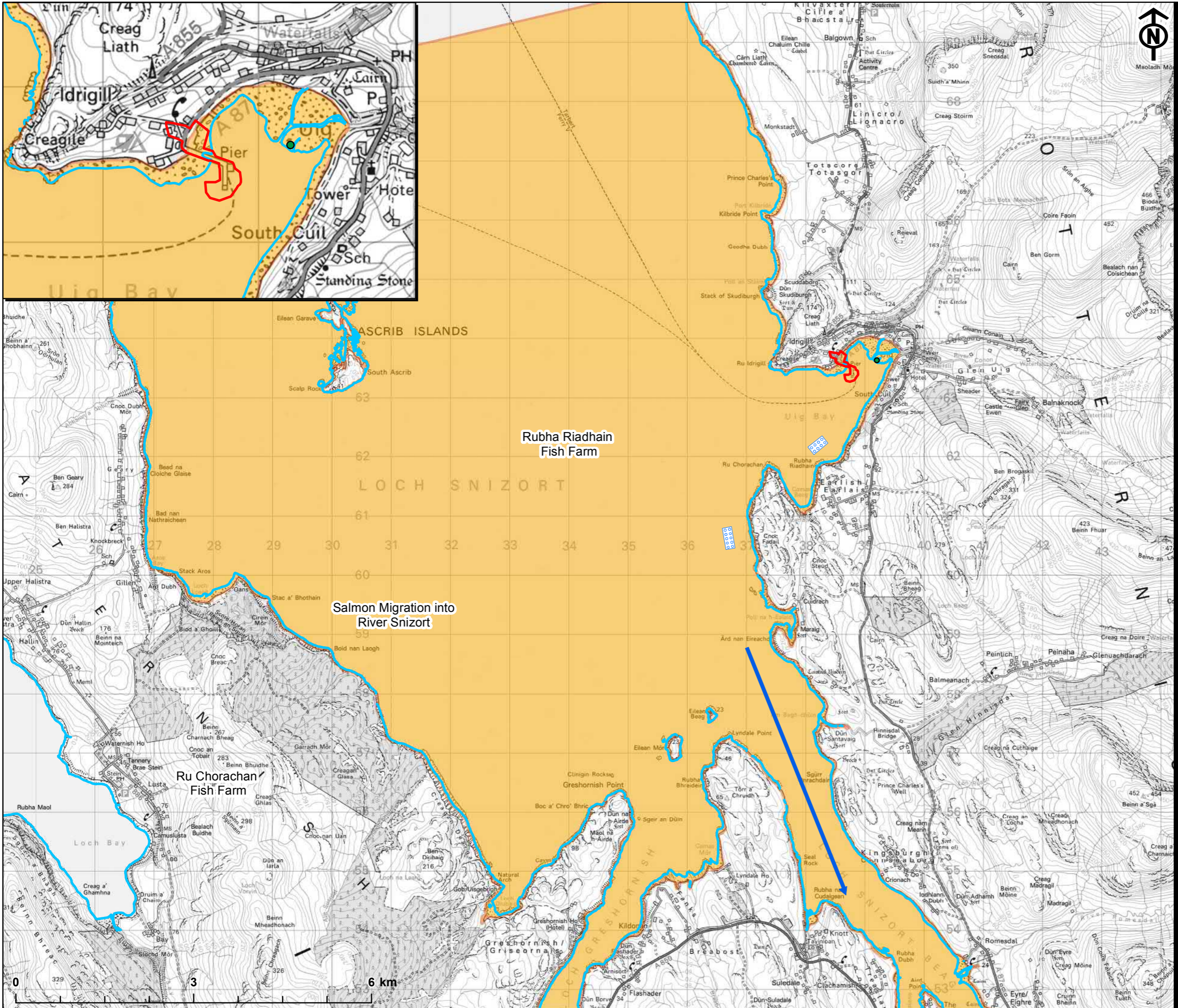
- Proposed Development Site
- Fish nursery grounds
- Fish spawning grounds



Project Management Initials: FA Designer: NS Checked: KM Approved: DH

Scale: 1:500,000 @ A3

This drawing has been produced for the use of AECOM's client. It may not be used, modified or relied upon by third parties, except as agreed by AECOM or as required by law. AECOM accepts no responsibility, and denies any liability, whatsoever, to any party that uses or relies upon this drawing without AECOM's express written consent. Do not scale this document.

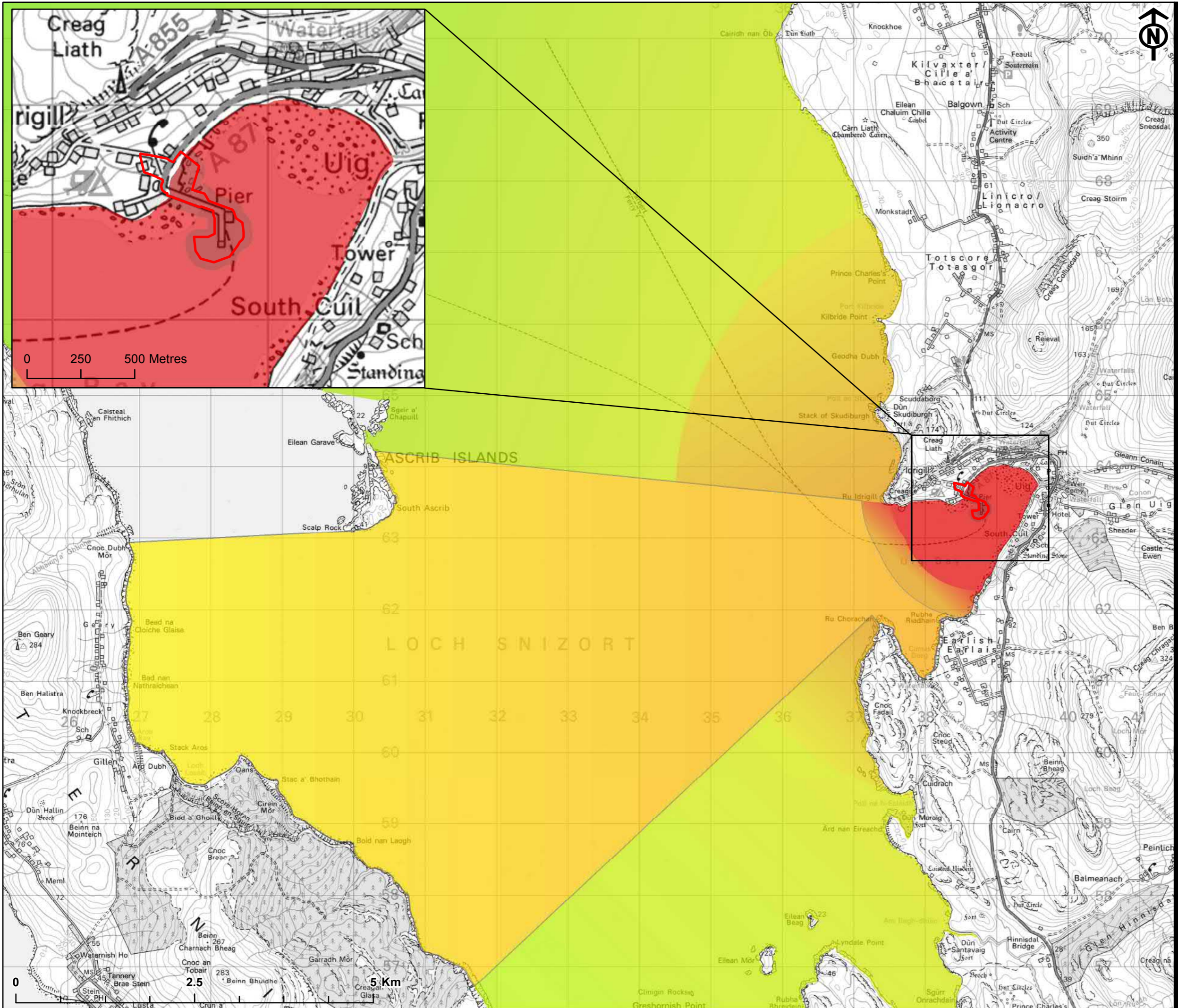


PROJECT
 Uig Harbour Redevelopment
 Environmental Impact Assessment
 CLIENT
 The Highland Council
 Comhairle na Gàidhealtachd

- KEY:
- Proposed Development Site
 - Fish Farms
 - Shellfish Growing Waters
 - Salmon Migration Route
 - Mean Low Water Springs
 - Mussel Locations

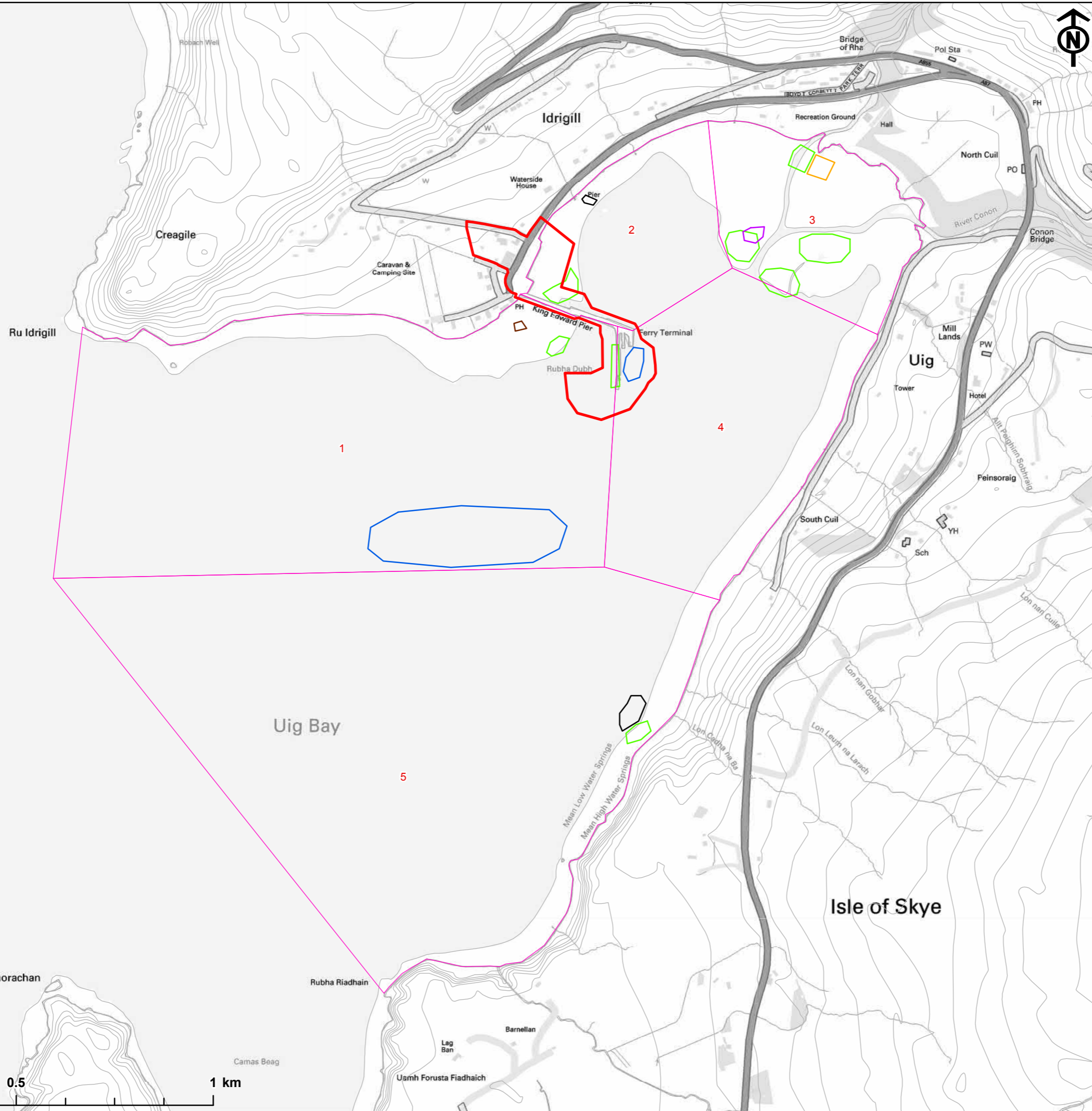
PROJECT NUMBER
 60536743
 SHEET TITLE
 Figure 13.2 Fish and shellfish ecology sensitivities
 SHEET NUMBER
 1 of 1

This drawing has been produced for the use of AECOM's client. It may not be used, modified or relied upon by third parties, except as agreed by AECOM, or as required by law. AECOM accepts no responsibility, and denies any liability whatsoever, to any party that uses or relies upon this drawing without AECOM's express written consent. Do not scale this document.



- KEY:
- Proposed Development Site
 - Underwater Sound Propagation Contours**
 - PTS – SPL dB_{peak}
 - PTS – SEL_{cum}
 - TTS or Behavioural Response






This drawing has been produced for the use of AECOM's client. It may not be used, modified or relied upon by third parties, except as agreed by AECOM or as required by law. AECOM accepts no responsibility, and denies any liability whatsoever, to any party that uses or relies upon this drawing without AECOM's express written consent. Do not scale this document.

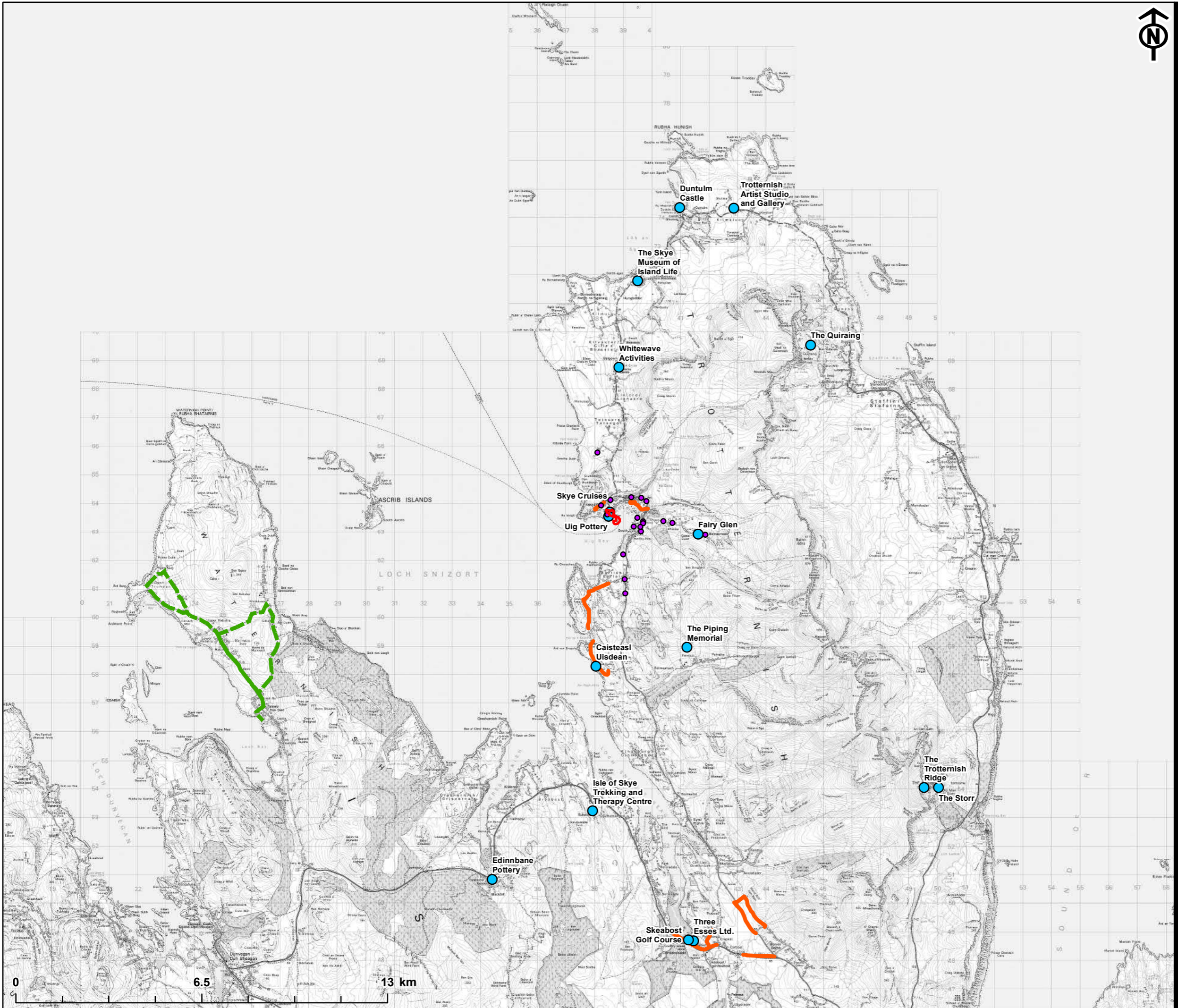


KEY:

- Proposed Development Site
- Count Sectors
- Roosts or other large aggregations of birds
- Curlew
- Eider
- Gulls
- Mallard
- Shag
- Turnstone



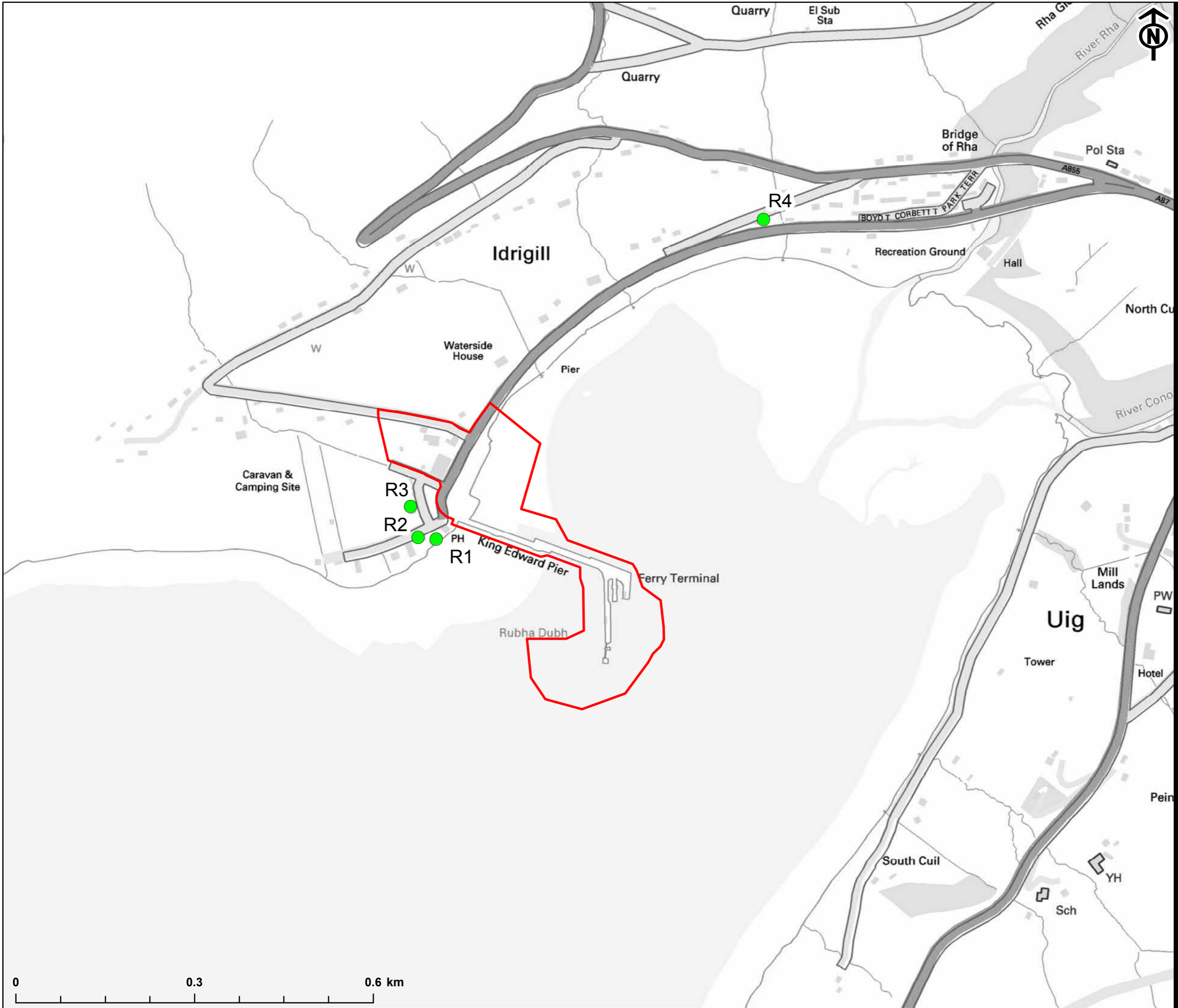
- KEY:
-  Proposed Development Site
 -  Accomodation (within 3 km)
 -  Attraction or Feature
 -  Core Paths
 -  Cycle Routes



This drawing has been produced for the use of AECOM's client. It may not be used, modified or relied upon by third parties, except as agreed by AECOM or as required by law. AECOM accepts no responsibility, and denies any liability whatsoever, to any party that uses or relies upon this drawing without AECOM's express written consent. Do not scale this document.

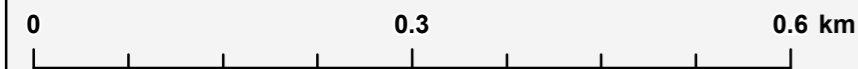
Project Management Initials: FA Designer: NS Checked: KM Approved: DH

Scale: 1:6,000 @ A3



PROJECT
 Uig Harbour Redevelopment
 Environmental Impact Assessment
 CLIENT
 The Highland Council
 Comhairle na Gàidhealtachd

KEY:
 Proposed Development Site
● Noise Sensitive Receptors



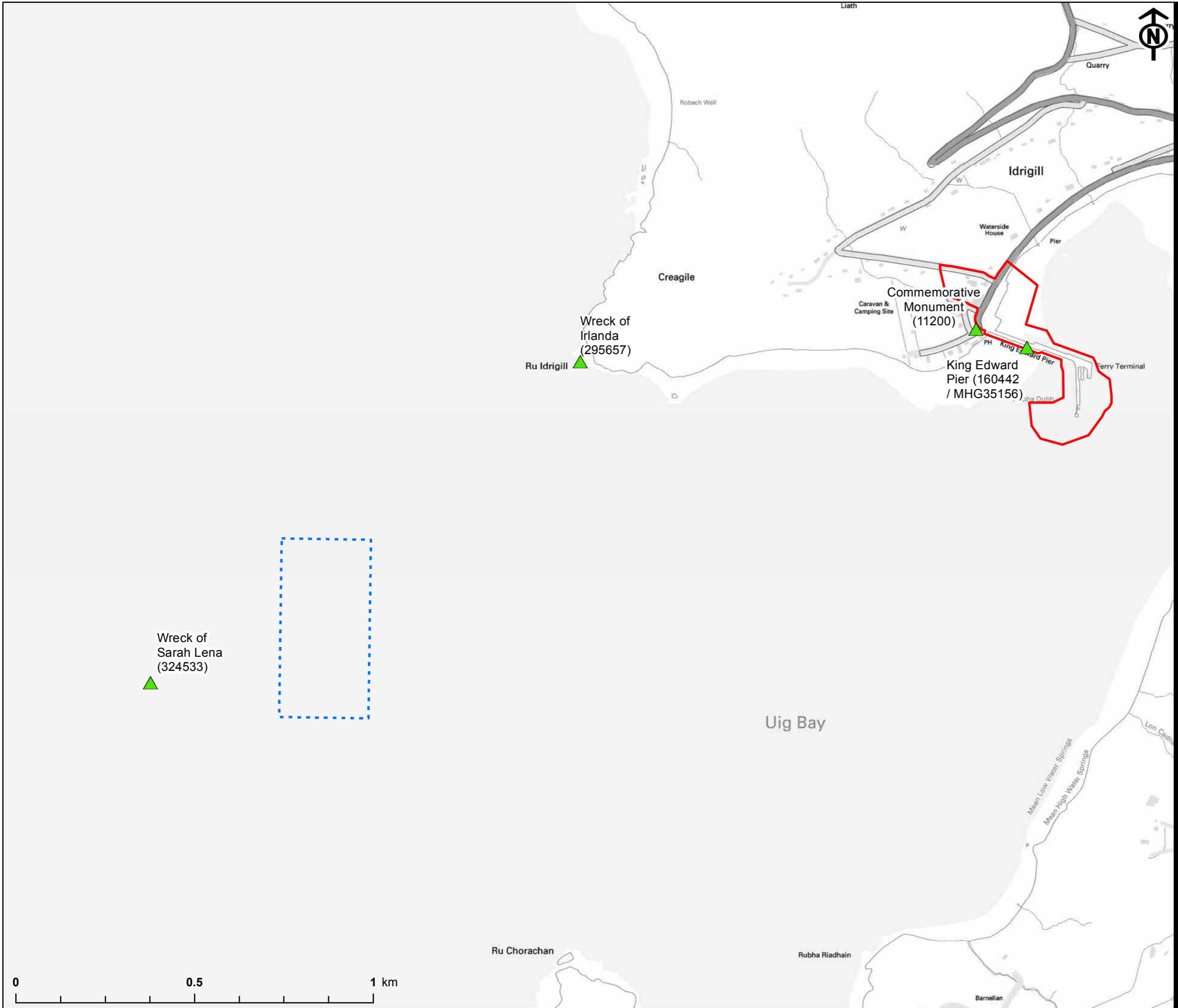
PROJECT NUMBER
 60536743
 SHEET TITLE
 Figure 17.1 Noise Sensitive Receptors
 SHEET NUMBER
 1 of 1

This drawing has been produced for the use of AECOM's client. It may not be used, modified or relied upon by third parties, except as agreed by AECOM or as required by law. AECOM accepts no responsibility, and denies any liability whatsoever, to any party that uses or relies upon this drawing without AECOM's express written consent. Do not scale this document.

PROJECT
Uig Harbour Redevelopment
Environmental Impact Assessment
CLIENT

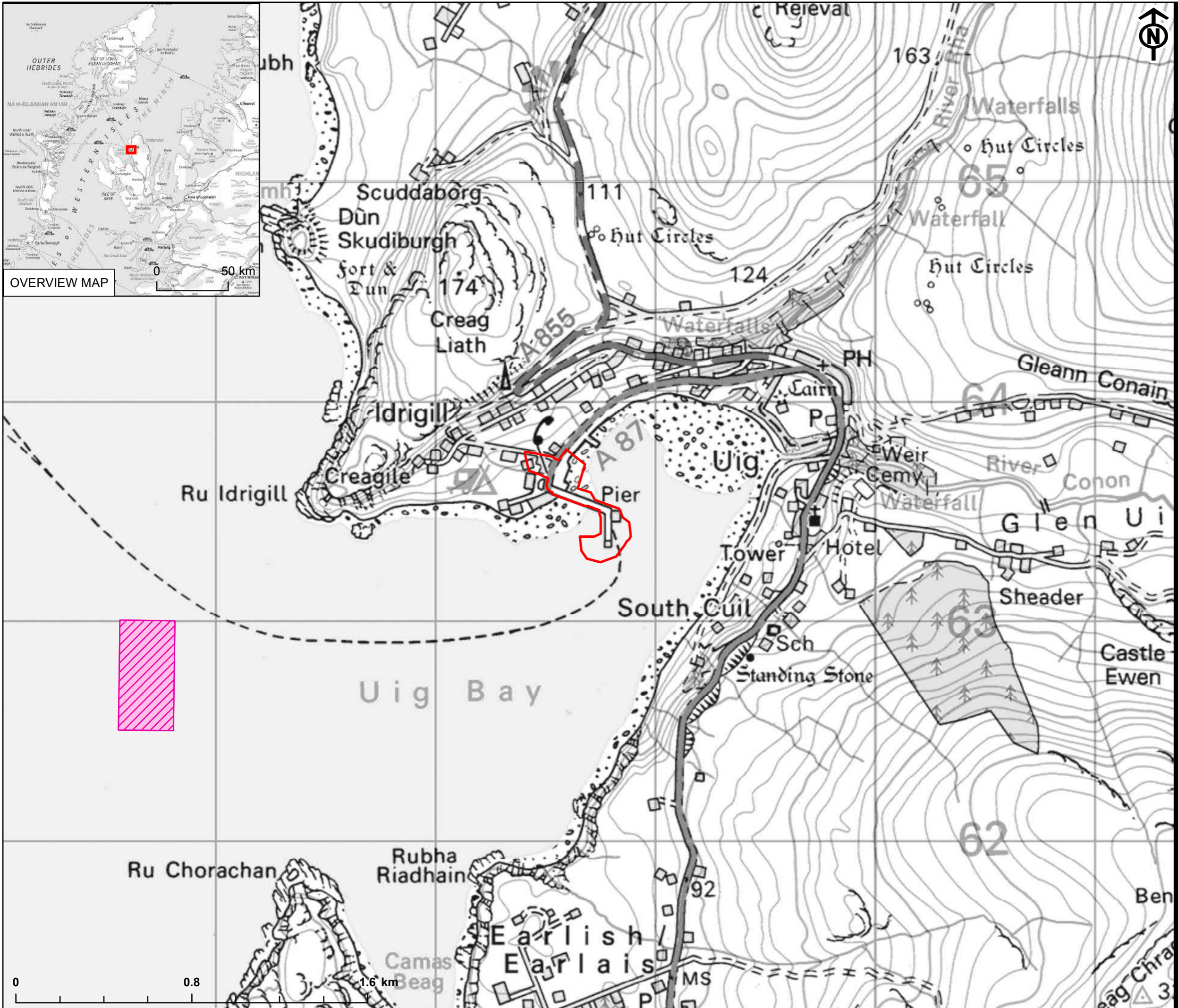


KEY:
 Proposed Development Site
 Sediment Disposal Area
 Heritage Assets



PROJECT NUMBER
60536743
SHEET TITLE
Figure 20.1 Location of Cultural
Heritage Assets
SHEET NUMBER
1 of 1

This drawing has been produced for the use of AECOM's client. It may not be used, modified or relied upon by third parties, except as agreed by AECOM or as required by law. AECOM accepts no responsibility, and denies any liability whatsoever, to any party that uses or relies upon this drawing without AECOM's express written consent. Do not scale this document.



PROJECT
 Uig Harbour Redevelopment
 Environmental Impact Assessment
 CLIENT
 The Highland Council
 Comhairle na Gàidhealtachd

KEY:
 Proposed Development Site
 Dredge Disposal Marine Licence Application Boundary

PROJECT NUMBER
 60536743
 SHEET TITLE
 Figure 1.1 Site Location Plan
 SHEET NUMBER
 1 of 1

This drawing has been produced for the use of AECOM's client. It may not be used, modified or relied upon by third parties, except as agreed by AECOM or as required by law. AECOM accepts no responsibility, and denies any liability whatsoever, to any party that uses or relies upon this drawing without AECOM's express written consent. Do not scale this document.