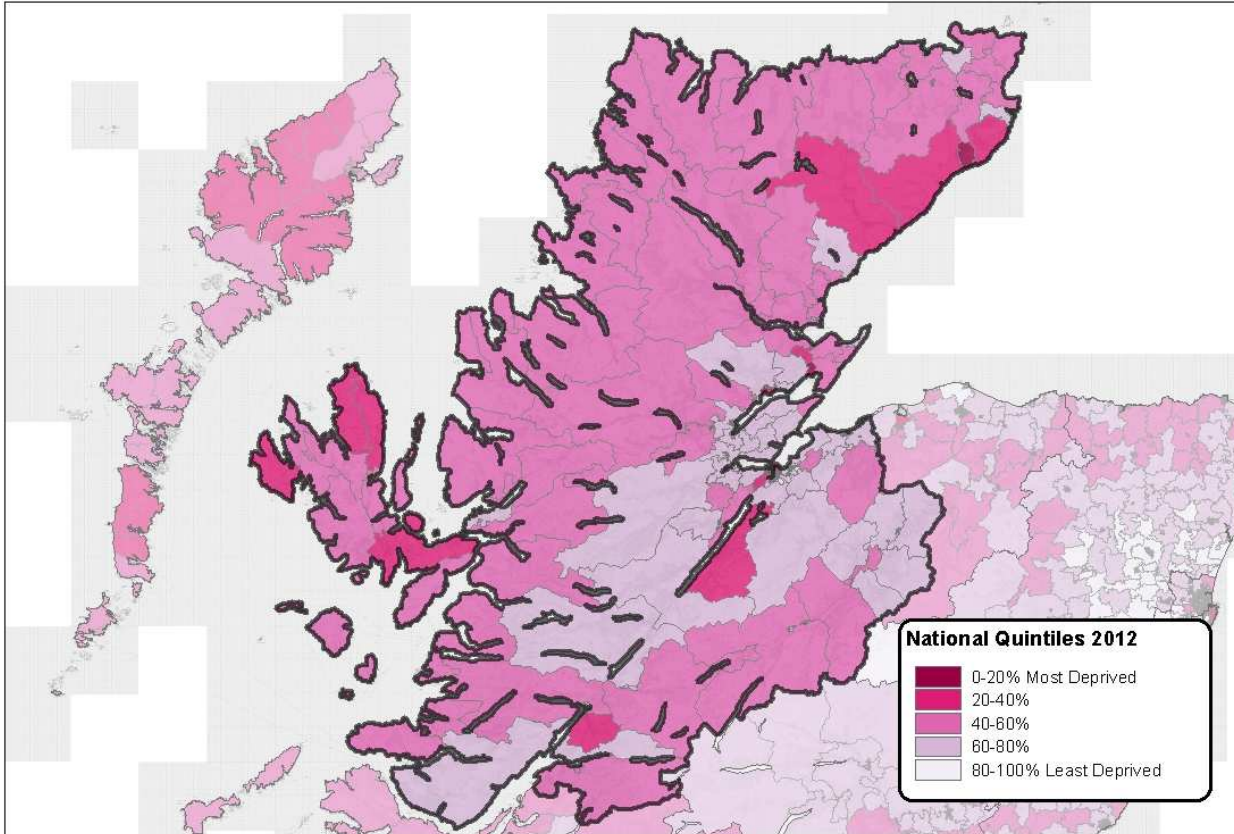


This provides a summary of key findings from the Scottish Index of Multiple Deprivation (SIMD 2012) published on 18 December 2012.

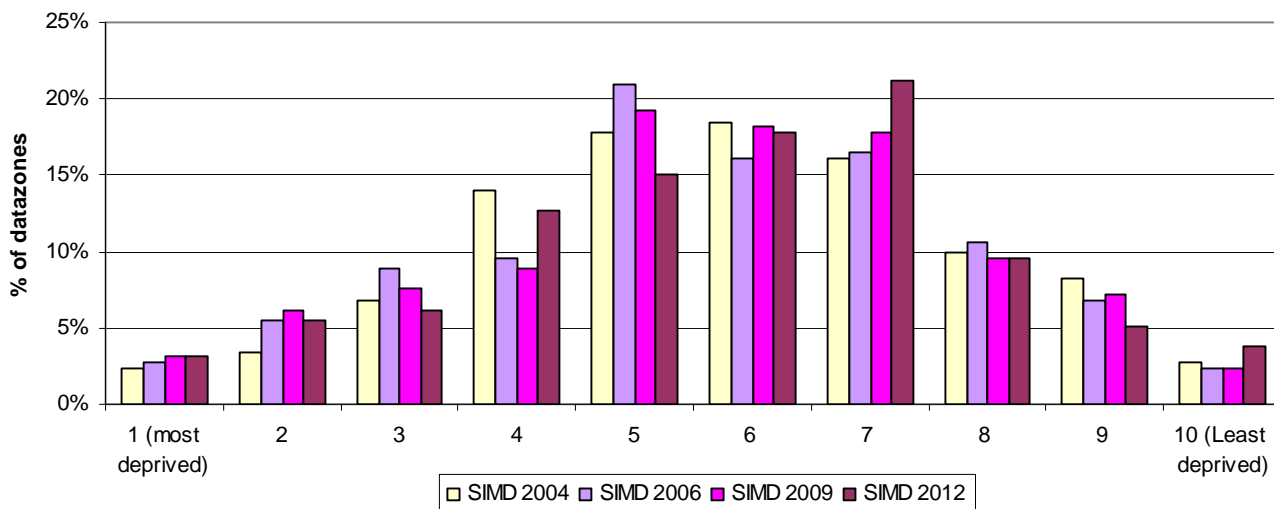
Map: Levels of deprivation in Highland in SIMD 2012 by quintiles



Reproduced by permission of Ordnance Survey on behalf of HMSO. © Crown copyright and database right (2012). All rights reserved. Ordnance Survey Licence number 100024655.

The decile graph shows what percentage of Highland’s datazones are found in each of the SIMD deciles. Most of Highland’s datazones are found in the middle deciles in SIMD 2012. This is similar to the pattern observed for SIMD 2009.

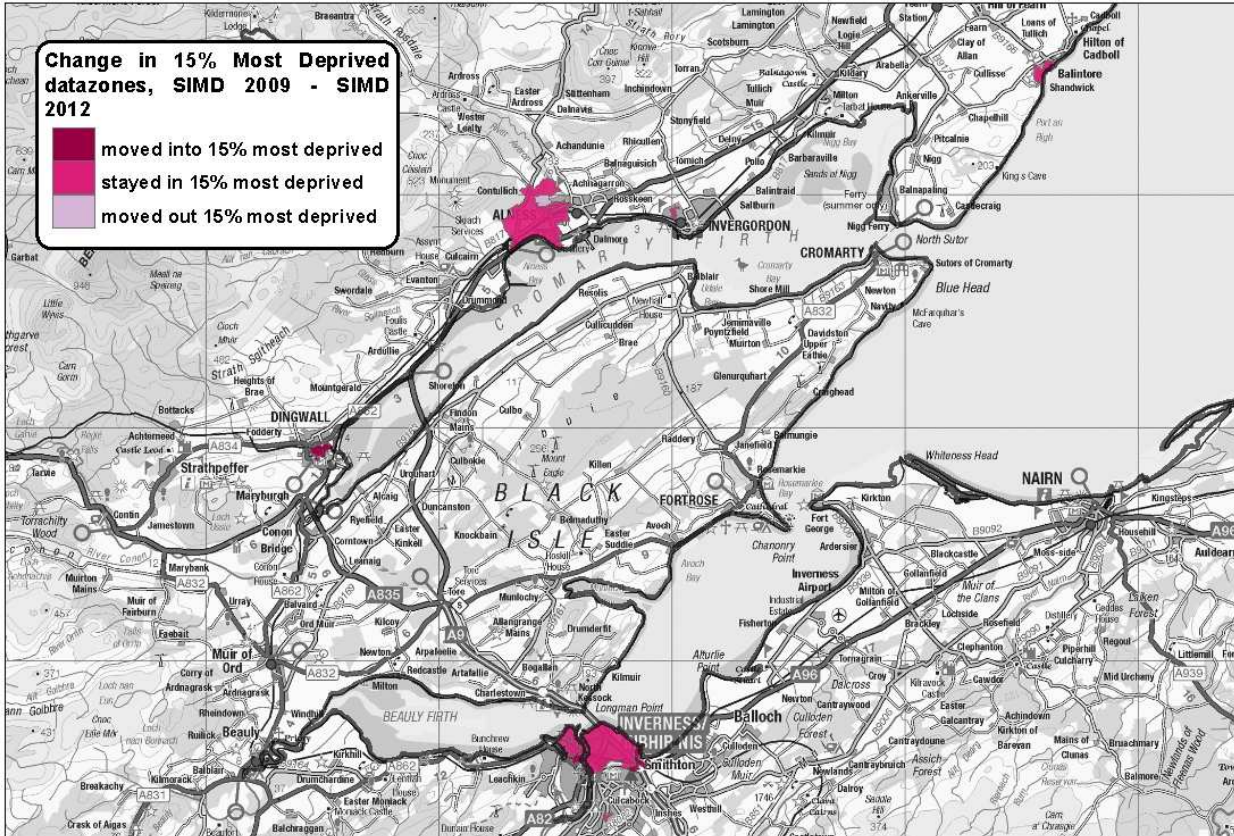
Decile graph: distribution of Highland’s datazones



Most deprived datazone in Highland

The most deprived datazone in Highland in the overall SIMD 2012 is S01003860, which is found in the Intermediate Zone of Inverness Merkinch and the Scottish Parliament Constituency of Ross, Skye & Inverness West. It has a rank of 32, meaning that it is amongst the 5% most deprived areas in Scotland.

Change map: datazones in Highland which have stayed in or moved out of the 15% most deprived in Scotland



Reproduced by permission of Ordnance Survey on behalf of HMSO. © Crown copyright and database right (2012). All rights reserved. Ordnance Survey Licence number 100024655.

The map shows the areas within Highland which have moved into or remained in the 15% most deprived areas between SIMD 2009 and SIMD 2012.

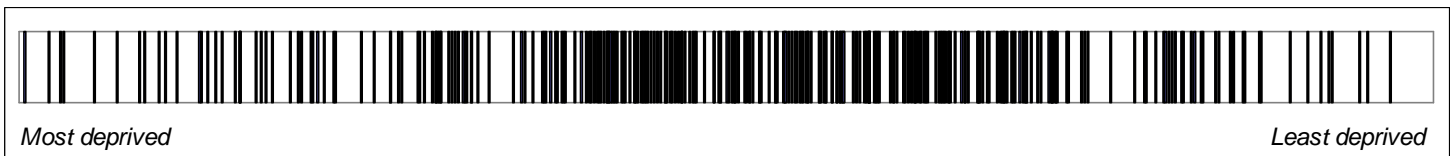
Note: There are also three additional datazones (S01003985, S01003976 and S01003978) which have stayed in the 15% most deprived areas between SIMD 2009 and SIMD 2012. These datazones are located within the Intermediate Geographies of Wick North and Wick South. Due to the location of these datazones they are not displayed on the map above which only shows part of Highland.

National Share of most deprived areas

In SIMD 2012, 17 (1.7%) of the 976 datazones in the 15% most deprived datazones in Scotland were found in Highland, compared to 16 (1.6%) in 2009, 17 (1.7%) in 2006 and 9 (0.9%) in 2004.

The barcode chart shows the position of the local authority's datazones in the Scotland-wide ranking. Each bar on the barcode represents a datazone in the local authority and is positioned according to its deprivation rank: the more deprived a datazone is, the further to the left it will be positioned.

Barcode chart: distribution of Highland's Datazones in SIMD 2012



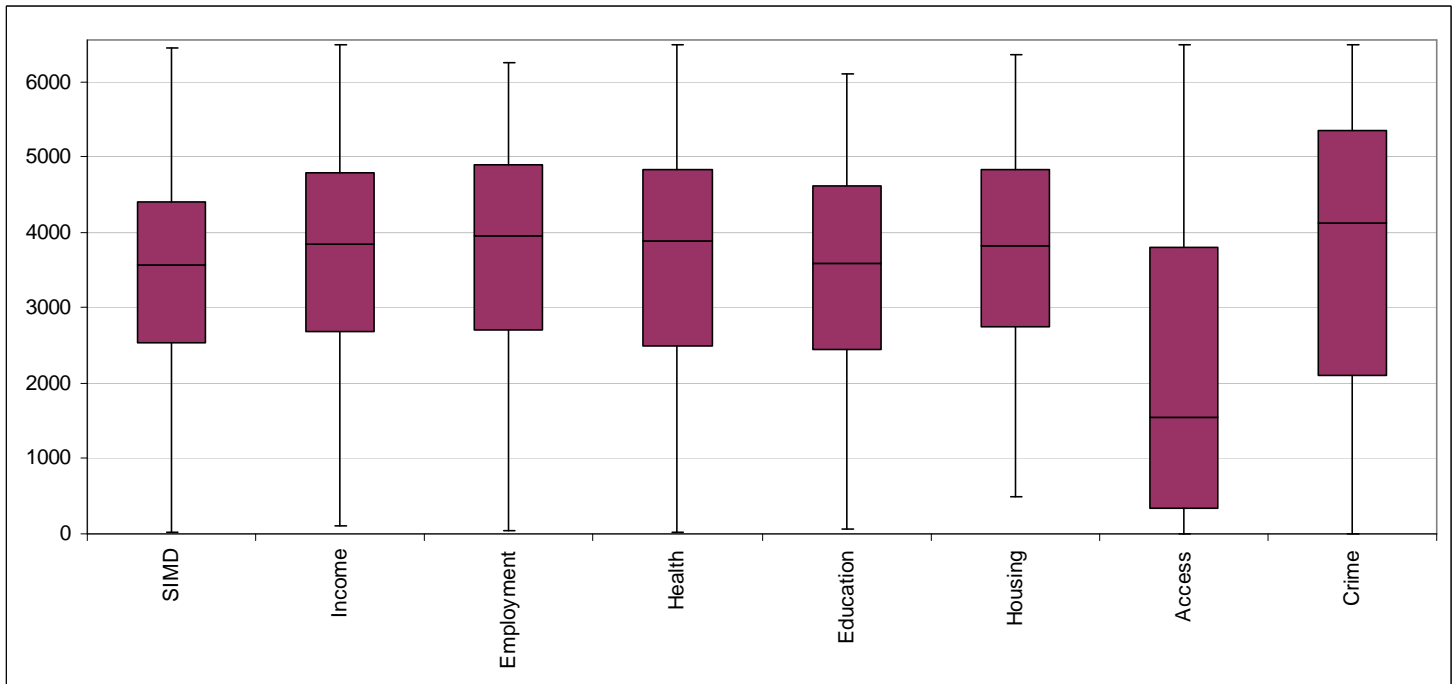
Local Share of most deprived areas

- In SIMD 2012, 17 (5.8%) of Highland's 292 datazones were found in the 15% most deprived datazones in Scotland, compared to 16 (5.5%) in 2009, 17 (5.8%) in 2006 and 9 (3.1%) in 2004.

Individual domains

The box plot summarises the range of values for the overall SIMD and the seven domains which make up the SIMD. In the following sections the individual domains are examined in more detail.

Box plot: Highland's ranks in the overall SIMD 2012 and individual SIMD domains. Boxes show the middle 50% of values and the middle (median) value; whiskers show the minimum and maximum ranks.



Income Domain

The level of income deprivation in Highland is below that in Scotland as a whole. In the SIMD 2012 income domain, 11% of the population of Highland were income deprived. This compares to 13% across Scotland as a whole.

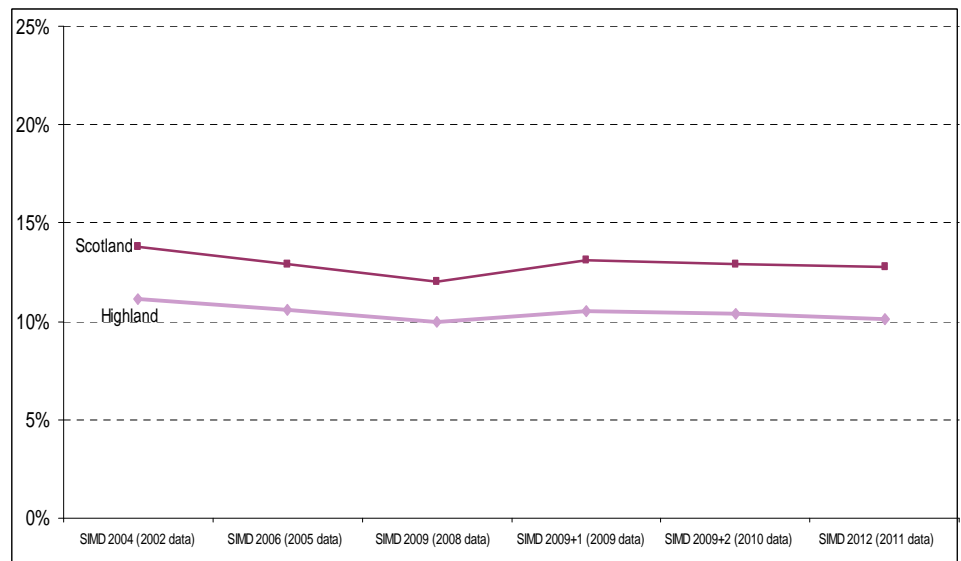
- *National share:* On the income domain in SIMD 2012, 12 (1.2%) of the 976 datazones in the 15% most deprived datazones in Scotland were found in Highland, compared to 16 (1.6%) in 2009, 17 (1.7%) in 2006 and 15 (1.5%) in 2004.
- *Local share:* On the income domain in SIMD 2012, 12 (4.1%) of Highland's 292 datazones were found in the 15% most deprived datazones in Scotland, compared to 16 (5.5%) in 2009, 17 (5.8%) in 2006 and 15 (5.1%) in 2004.
- The most income deprived datazone in Highland in SIMD 2012 is S01003862, which is found in the Intermediate Zone of Inverness Merkinch and the Scottish Parliament Constituency of Ross, Skye & Inverness West. It has a rank of 106, meaning that it is amongst the 5% most income deprived areas in Scotland.

Employment Domain

The level of employment deprivation in Highland is below that in Scotland as a whole. In the SIMD 2012 employment domain, 10% of the population of Highland aged 16-60/64 were employment deprived. This compares to 13% across Scotland as a whole (see line chart).

- *National share:* In the employment domain in SIMD 2012, 15 (1.5%) of the 976 datazones in the 15% most deprived datazones in Scotland were found in Highland, compared to 14 (1.4%) in 2009, 15 (1.5%) in 2006 and 10 (1%) in 2004.

Line chart: % of working age population employment deprived, SIMD 2004 to SIMD 2012



- *Local share:* In the employment domain in SIMD 2012, 15 (5.1%) of Highland's 292 datazones were found in the 15% most deprived datazones in Scotland, compared to 14 (4.8%) in 2009, 15 (5.1%) in 2006 and 10 (3.4%) in 2004.
- The most employment deprived datazone in Highland in SIMD 2012 is S01003860, which is found in the Intermediate Zone of Inverness Merkinch and the Scottish Parliament Constituency of Ross, Skye & Inverness West. It has a rank of 49, meaning that it is amongst the 5% most employment deprived areas in Scotland.

Health Domain

- *National share:* In the health domain in SIMD 2012, 25 (2.6%) of the 976 datazones in the 15% most deprived datazones in Scotland were found in Highland, compared to 22 (2.3%) in 2009, 18 (1.8%) in 2006 and 8 (0.8%) in 2004.
- *Local share:* In the health domain in SIMD 2012, 25 (8.6%) of Highland's 292 datazones were found in the 15% most deprived datazones in Scotland, compared to 22 (7.5%) in 2009, 18 (6.2%) in 2006 and 8 (2.7%) in 2004.
- The most health deprived datazone in Highland in SIMD 2012 is S01003860, which is found in the Intermediate Zone of Inverness Merkinch and the Scottish Parliament Constituency of Ross, Skye & Inverness West. It has a rank of 31, meaning that it is amongst the 5% most health deprived areas in Scotland.

Education Domain

- *National share:* In the education domain in SIMD 2012, 24 (2.5%) of the 976 datazones in the 15% most deprived datazones in Scotland were found in Highland, compared to 20 (2%) in 2009, 13 (1.3%) in 2006 and 4 (0.4%) in 2004.
- *Local share:* In the education domain in SIMD 2012, 24 (8.2%) of Highland's 292 datazones were found in the 15% most deprived datazones in Scotland, compared to 20 (6.8%) in 2009, 13 (4.5%) in 2006 and 4 (1.4%) in 2004.
- The most education deprived datazone in Highland in SIMD 2012 is S01003860, which is found in the Intermediate Zone of Inverness Merkinch and the Scottish Parliament Constituency of Ross, Skye & Inverness West. It has a rank of 70, meaning that it is amongst the 5% most education deprived areas in Scotland.

Housing Domain

- *National share:* On the housing domain in SIMD 2012, 2 (0.2%) of the 976 datazones in the 15% most deprived datazones in Scotland were found in Highland.
- *Local share:* On the housing domain in SIMD 2012, 2 (0.7%) of Highland's 292 datazones were found in the 15% most deprived datazones in Scotland.
- The most housing deprived datazone in Highland in SIMD 2012 is S01003853, which is found in the Intermediate Zone of Inverness Central, Raigmore and Longman and the Scottish Parliament Constituency of Ross, Skye & Inverness West. It has a rank of 496, meaning that it is amongst the 10% most housing deprived areas in Scotland.

Access Domain

- *National share:* In the access domain in SIMD 2012, 122 (12.5%) of the 976 datazones in the 15% most deprived datazones in Scotland were found in Highland, compared to 127 (13%) in 2009, 131 (13.4%) in 2006 and 126 (12.9%) in 2004.
- *Local share:* In the access domain in SIMD 2012, 122 (41.8%) of Highland's 292 datazones were found in the 15% most deprived datazones in Scotland, compared to 127 (43.5%) in 2009, 131 (44.9%) in 2006 and 126 (43.2%) in 2004.
- The most access deprived datazone in Highland in SIMD 2012 is S01003739, which is found in the Intermediate Zone of Lochaber West and the Scottish Parliament Constituency of Ross, Skye & Inverness West. It has a rank of 2, meaning that it is amongst the 5% most access deprived areas in Scotland.

Crime Domain

- *National share:* In the crime domain in SIMD 2012, 36 (3.7%) of the 976 datazones in the 15% most deprived datazones in Scotland were found in Highland, compared to 36 (3.7%) in 2009 and 26 (2.7%) in 2006.
- *Local share:* In the crime domain in SIMD 2012, 36 (12.3%) of Highland's 292 datazones were found in the 15% most deprived datazones in Scotland, compared to 36 (12.3%) in 2009 and 26 (8.9%) in 2006.
- The most crime deprived datazone in Highland in SIMD 2012 is S01003853, which is found in the Intermediate Zone of Inverness Central, Raigmore and Longman and the Scottish Parliament Constituency of Ross, Skye & Inverness West. It has a rank of 3, meaning that it is amongst the 5% most crime deprived areas in Scotland.