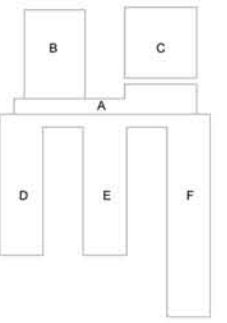




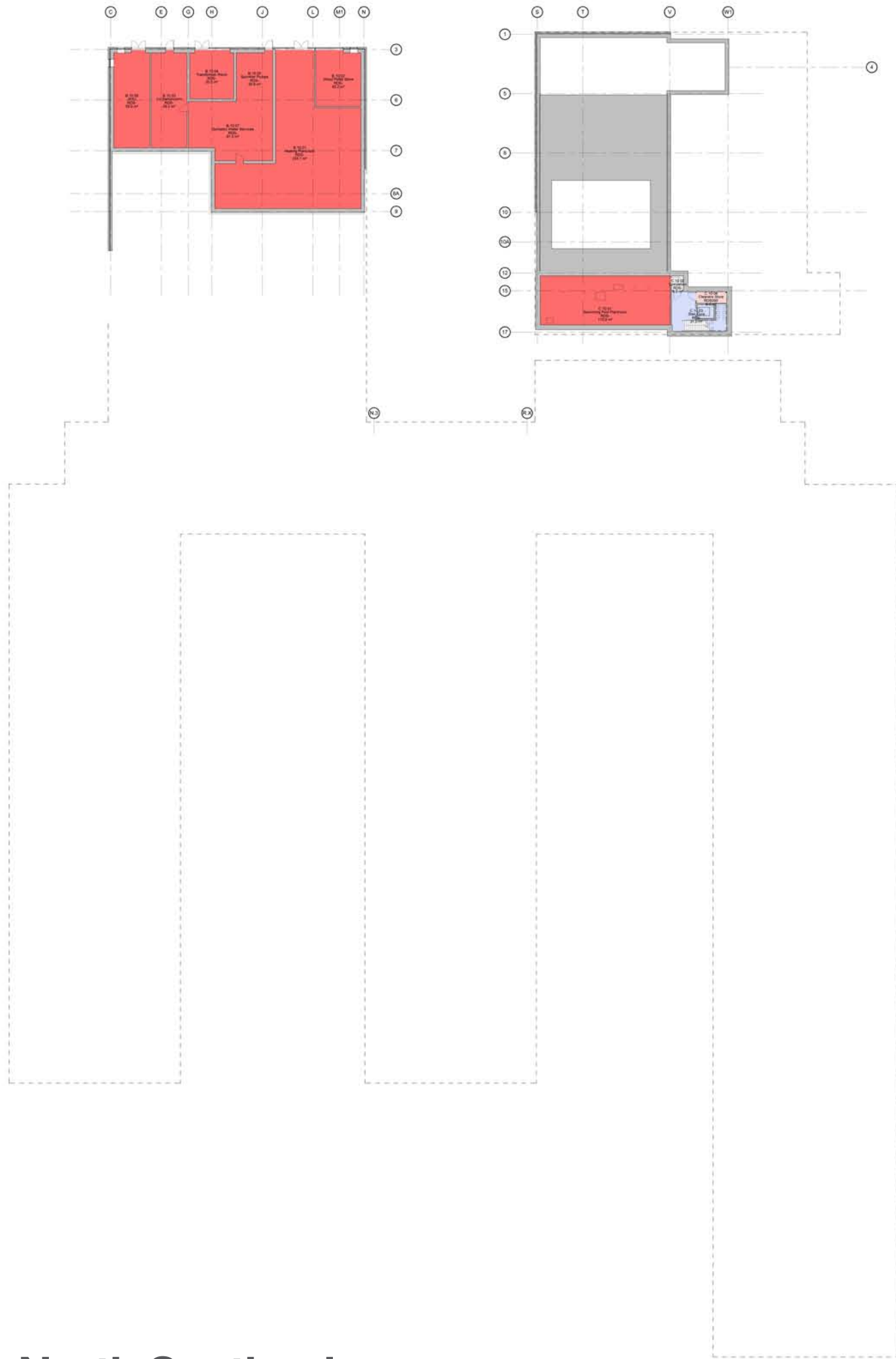
Hub North Scotland

Wick High School and East Caithness Community Facility: Landscape layout



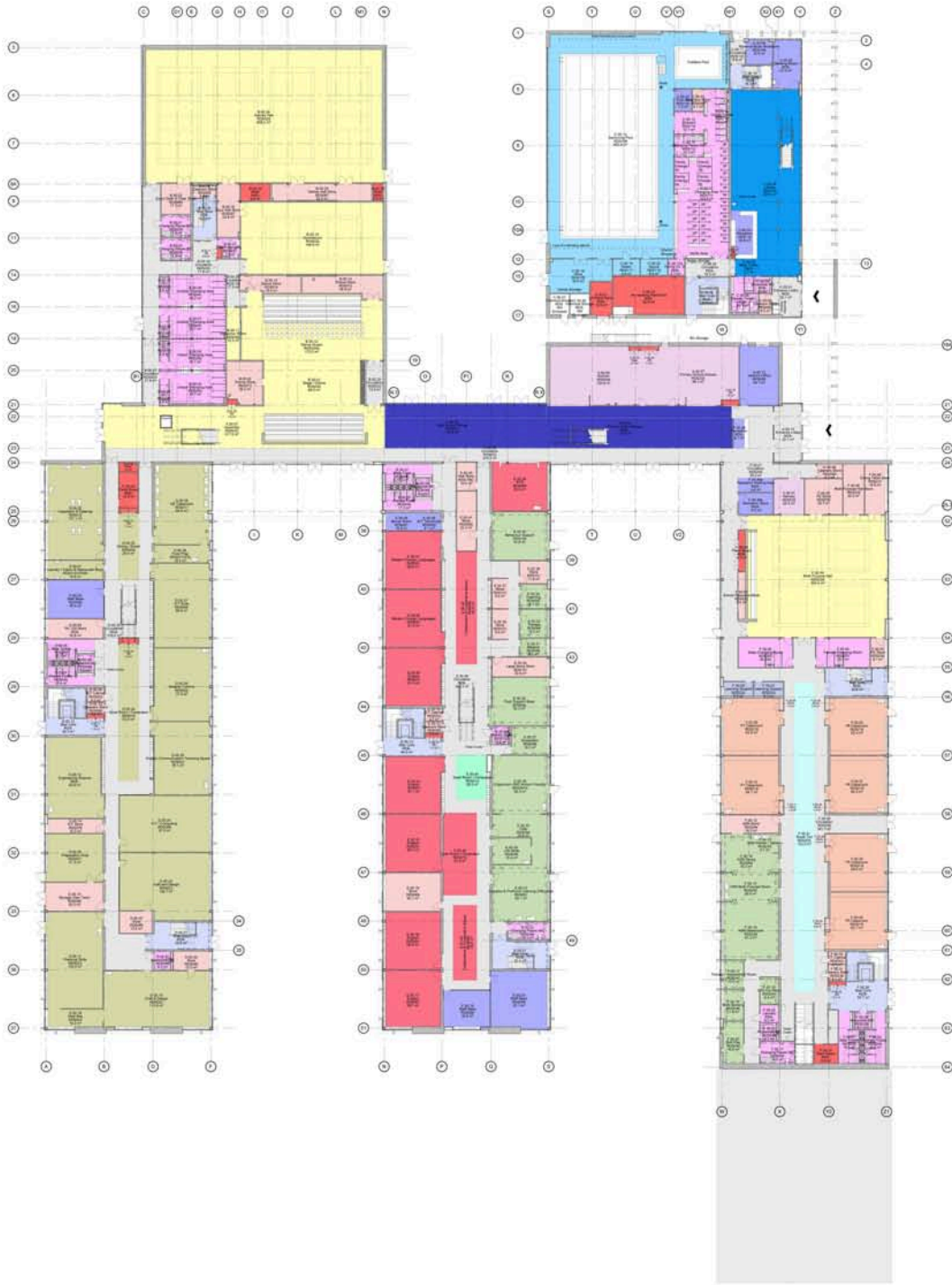
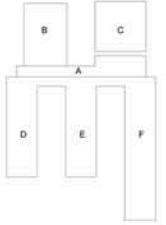


- Circulation
- Energy Centre
- Stair Core
- Store



Hub North Scotland

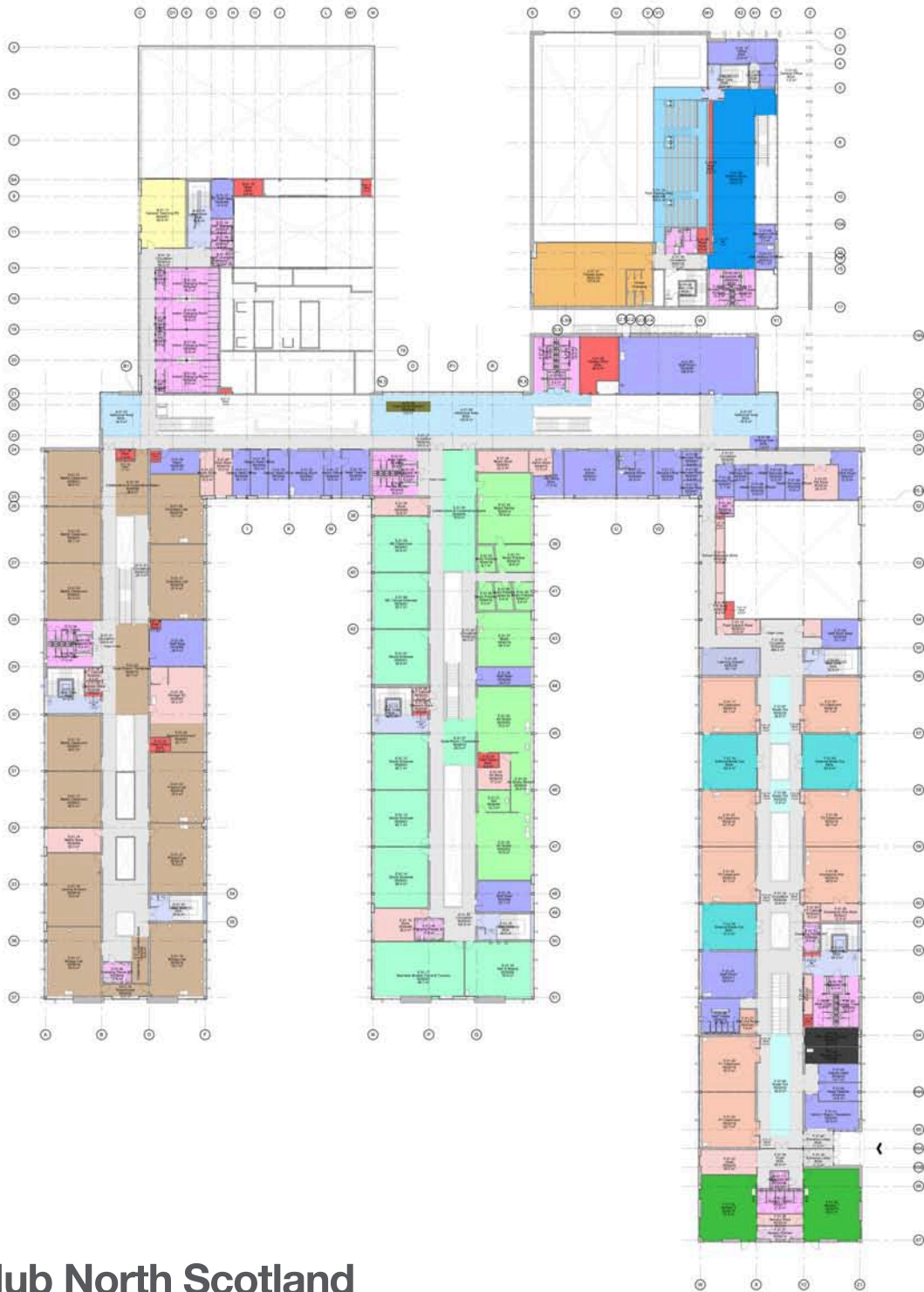
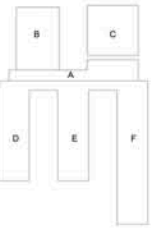
Wick High School and East Caithness Community Facility: Lower floor plan



- Admin & Staff
- Ancillary
- ASN
- Circulation
- Dining
- Energy Centre
- English & Modern Foreign Languages
- Internal Break Out
- Library
- Primary Learning Support
- Sanitary and Changing
- Social & Vocational
- Sports & Assembly
- Stair Core
- Store
- Swimming Pool
- Teaching
- Technology

Hub North Scotland

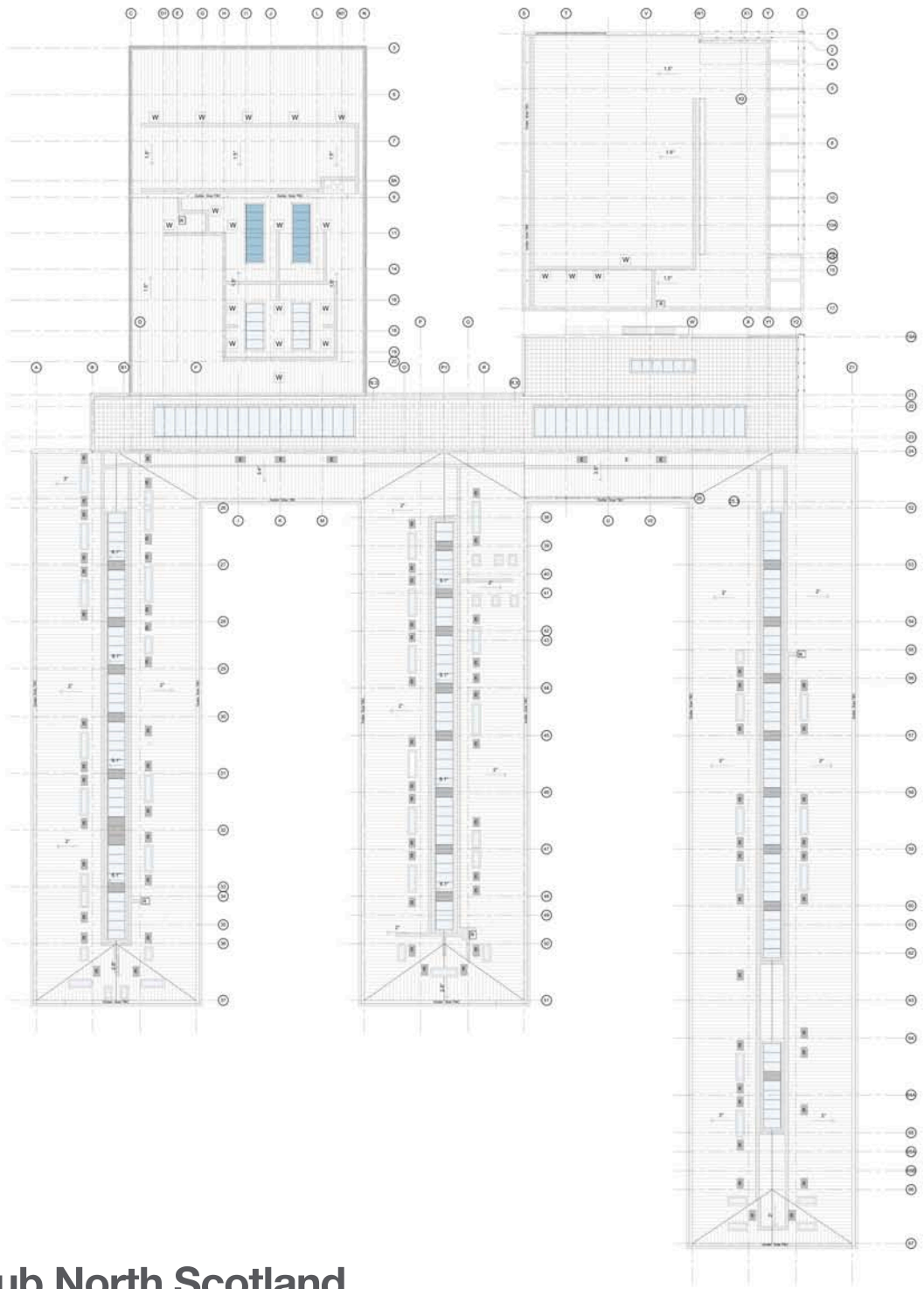
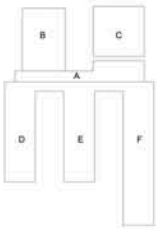
Wick High School and East Caithness Community Facility: Ground floor plan



- Additional Area
- Admin & Staff
- Ancillary
- Circulation
- Energy Centre
- Expressive Arts
- Fitness Suite
- Internal Break Out
- Kitchen
- Library
- Maths & Science
- Nursery
- Primary Admin & Staff
- Primary External Break Out
- Primary Learning Support
- Sanitary and Changing
- Social & Vocational
- Sports & Assembly
- Stair Core
- Store
- Swimming Pool
- Teaching

Hub North Scotland

Wick High School and East Caithness Community Facility: First floor plan



Hub North Scotland
Wick High School and East Caithness Community Facility: Roof plan

Ground floor plan / changes indicated

Ground floor plan

Ryder



Hub North Scotland

Wick High School and East Caithness Community Facility: High School Ground floor plan / change comparison

First floor plan /
changes indicated

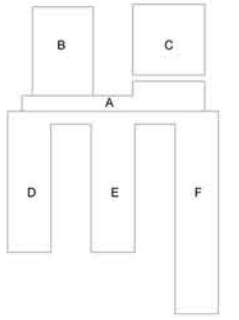
First floor plan

Ryder

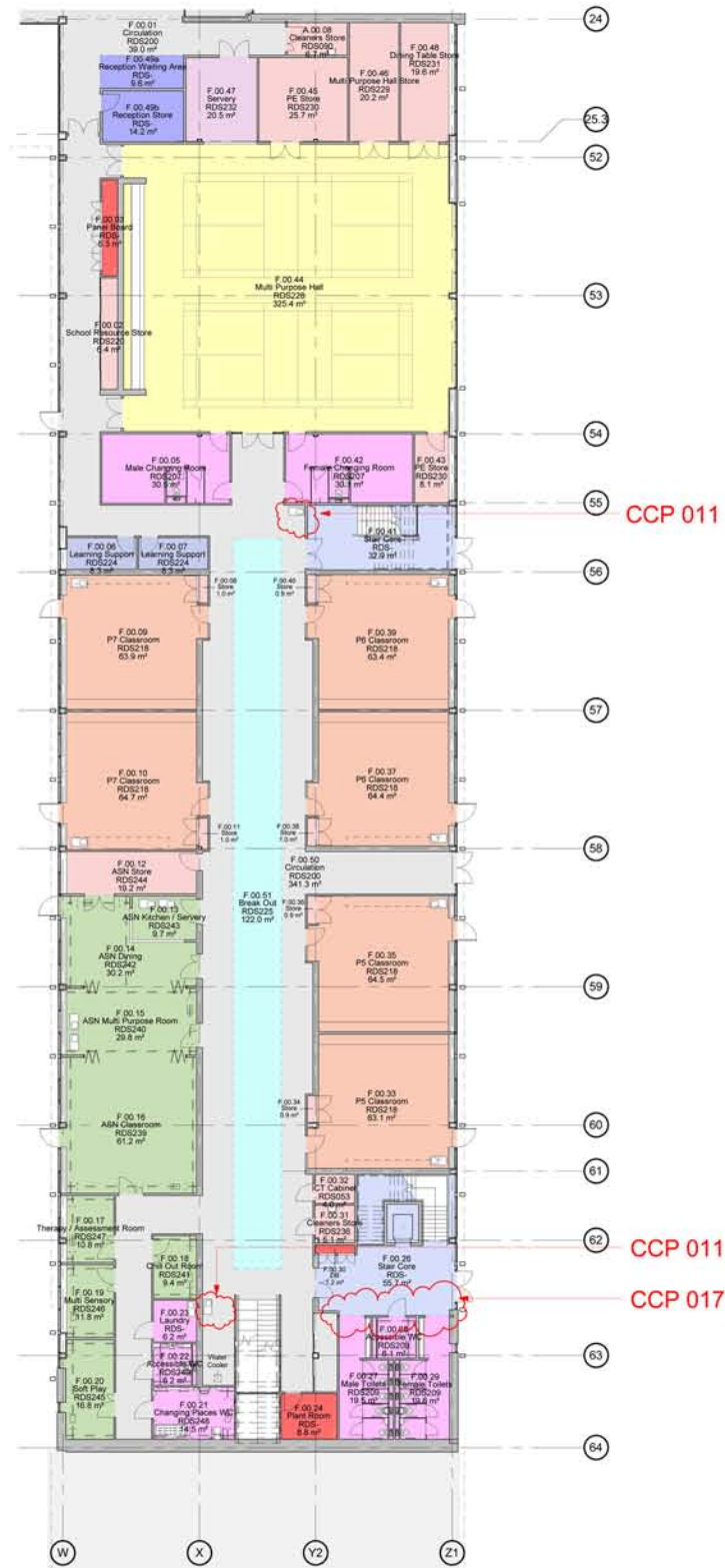


Hub North Scotland

Wick High School and East Caithness Community Facility: High School First floor plan / change comparison



- Admin & Staff
- Ancillary
- ASN
- Circulation
- Dining
- Energy Centre
- English & Modern Foreign Languages
- Internal Break Out
- Library
- Primary Learning Support
- Sanitary and Changing
- Social & Vocational
- Sports & Assembly
- Stair Core
- Store
- Swimming Pool
- Teaching
- Technology

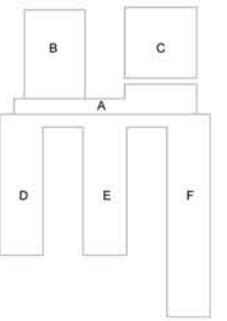


Ground floor plan / changes indicated

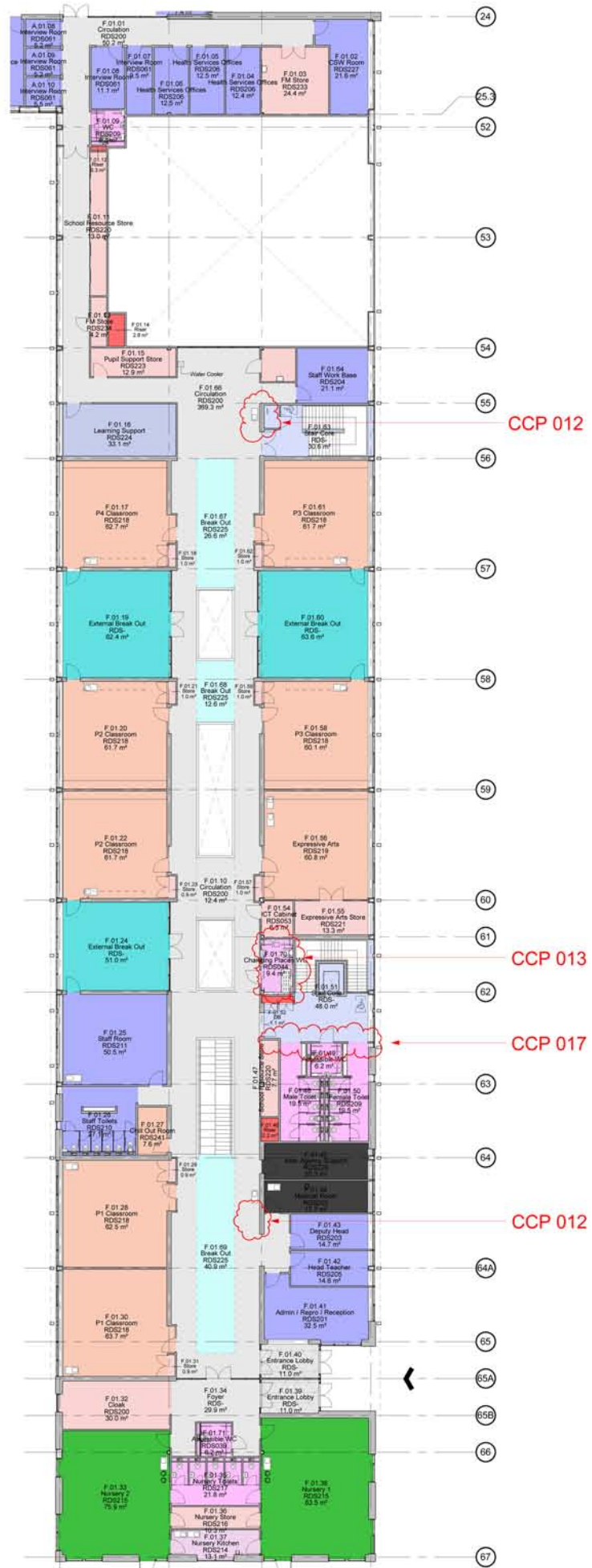
Ground floor plan

Hub North Scotland

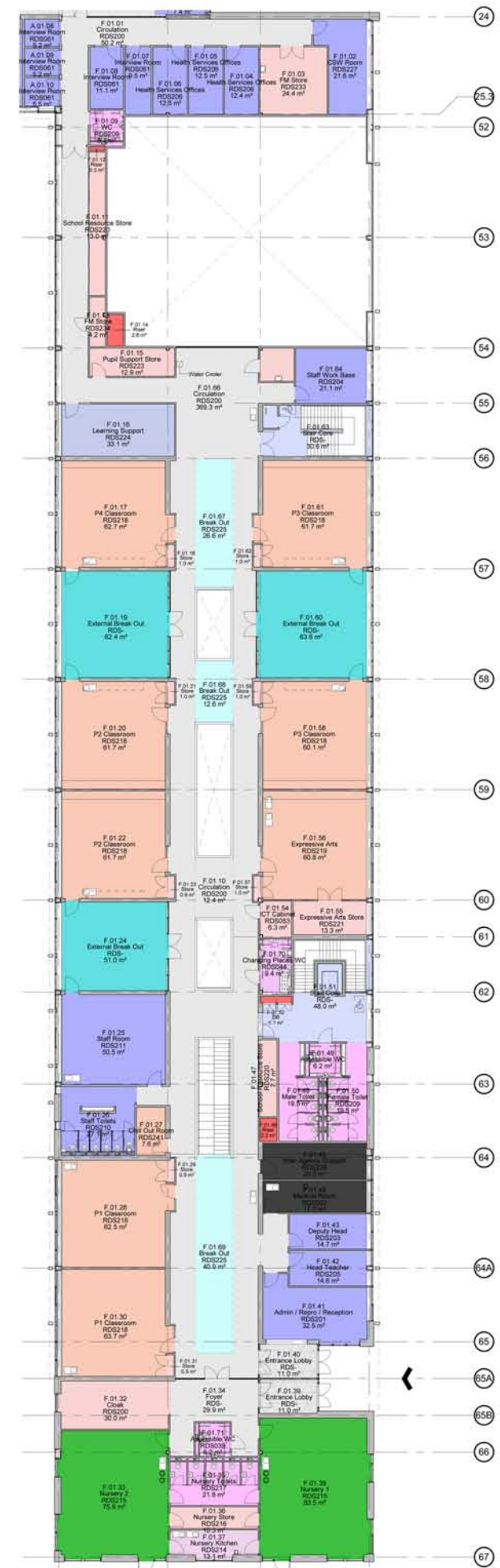
Wick High School and East Caithness Community Facility: South primary school - Ground floor Plan / change comparison



- Additional Area
- Admin & Staff
- Ancillary
- Circulation
- Energy Centre
- Expressive Arts
- Fitness Suite
- Internal Break Out
- Kitchen
- Library
- Maths & Science
- Nursery
- Primary Admin & Staff
- Primary External Break Out
- Primary Learning Support
- Sanitary & Changing
- Social & Vocational
- Sports & Assembly
- Stair Core
- Store
- Swimming Pool
- Teaching



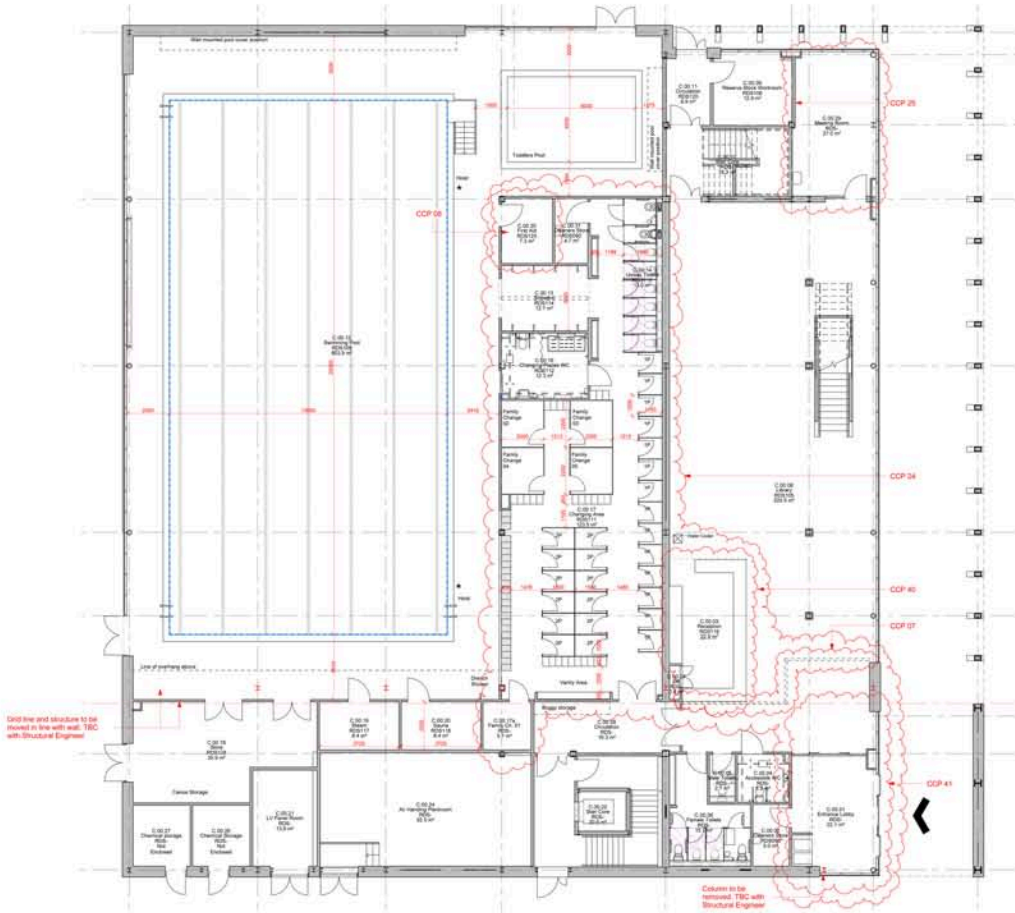
First floor plan / changes indicated



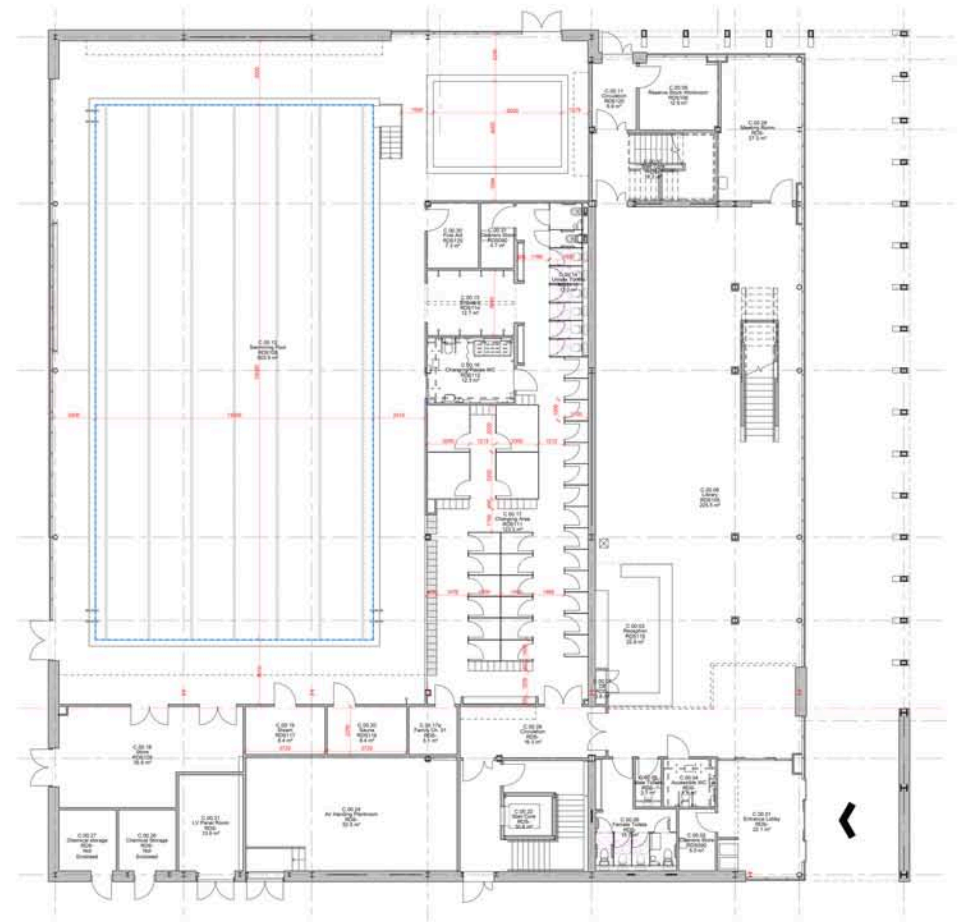
First floor plan

Hub North Scotland

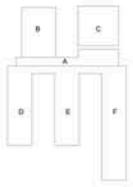
Wick High School and East Caithness Community Facility: Primary school - First floor Plan / change comparison



Ground floor plan / changes indicated

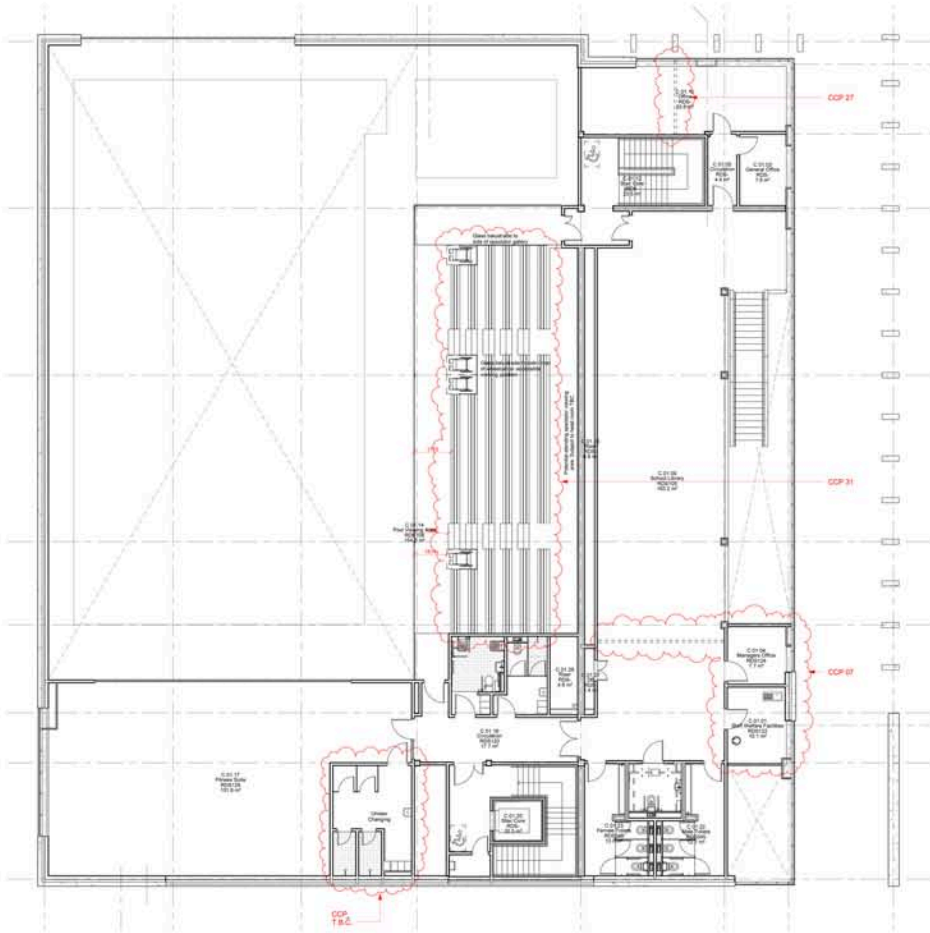


Ground floor plan

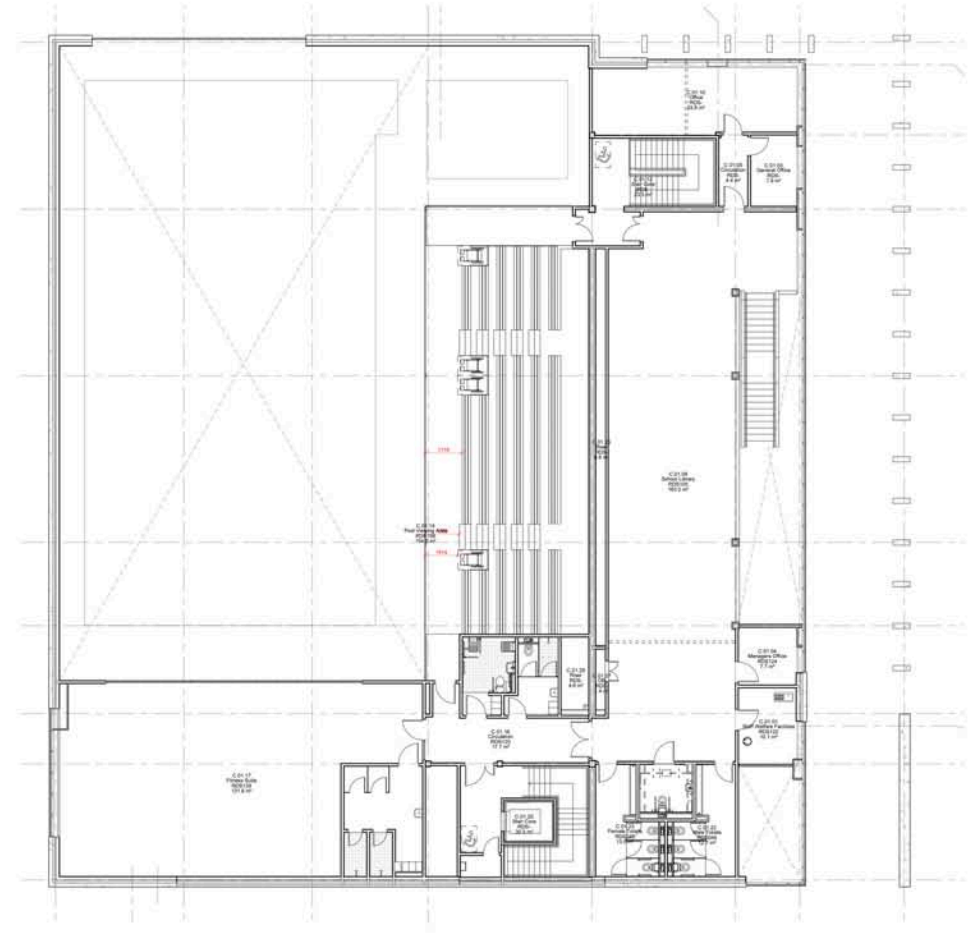


Hub North Scotland

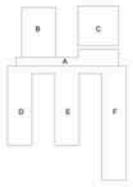
Wick High School and East Caithness Community Facility: Community building - Ground floor plan / change comparison



First floor plan / changes indicated

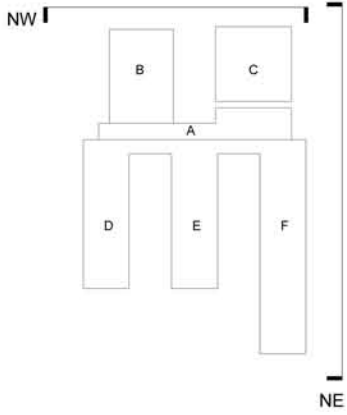


First floor plan



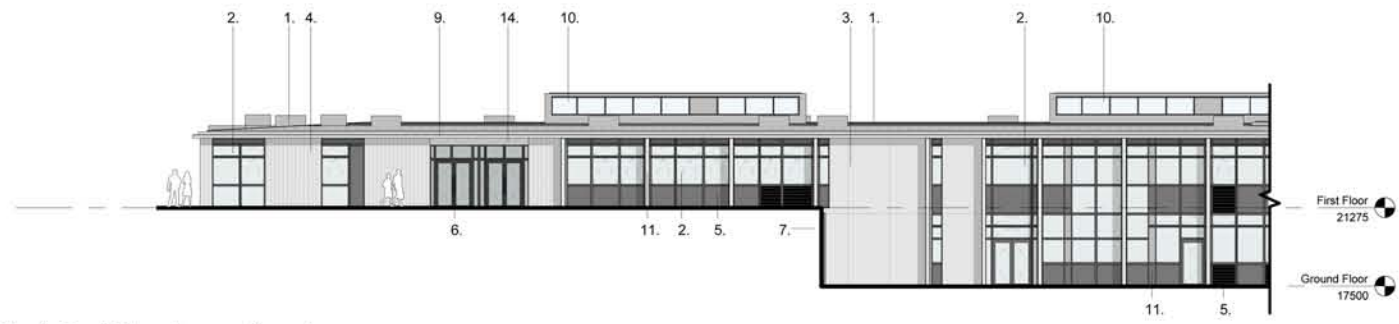
Hub North Scotland

Wick High School and East Caithness Community Facility: Community building - First floor plan / change comparison



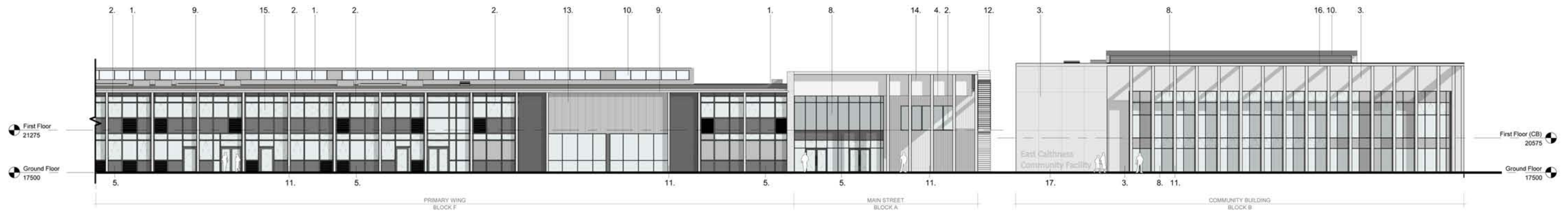
ANNOTATION KEY:

1. Aluminium standing seam roof
2. PPC Aluminium clad timber framed window and louvre panel system with integrated concealed opening lights and glazed spandrel panels as required. Colour: TBC *Note: Glazing / panel / solid facade TBC*
3. Acid etched precast concrete cladding panels with integrated recessed vertical and horizontal joints
4. Acid etched precast concrete cladding with moulding (mould TBC)
5. PPC aluminium spandrel panel. Colour: TBC
6. Glazed entrance door - frame finish to match curtain wall system
7. Retaining wall
8. PPC aluminium curtain wall system with integrated concealed opening lights and glazed spandrel panels as required
9. Anodised aluminium roof eaves cope / gutter profile
10. Rooflight with operable vent windows to upstand
11. Acid etched precast concrete vertical pier
12. Galvanneal access stair with balustrade
13. Frameless translucent polycarbonate facade system
14. Anodised aluminium soffit profile. Colour: TBC
15. Glazed balustrade with retractable glazed screen
16. Acid etched precast concrete cope
17. Embossed / recessed main signage to precast concrete panels
18. Curtain walling with integrated fit as required
19. PPC aluminium louvre wall with integrated door openings as required. Colour: TBC
20. Grey coloured insulated panels. Colour: To match concrete panels
21. Grey fibre cement cladding panel to inner parapet. Colour: To match concrete cladding panels
22. Grey coloured facing blockwork. Colour: To match concrete cladding panels
23. Concrete paving slabs over monolithic roof membrane



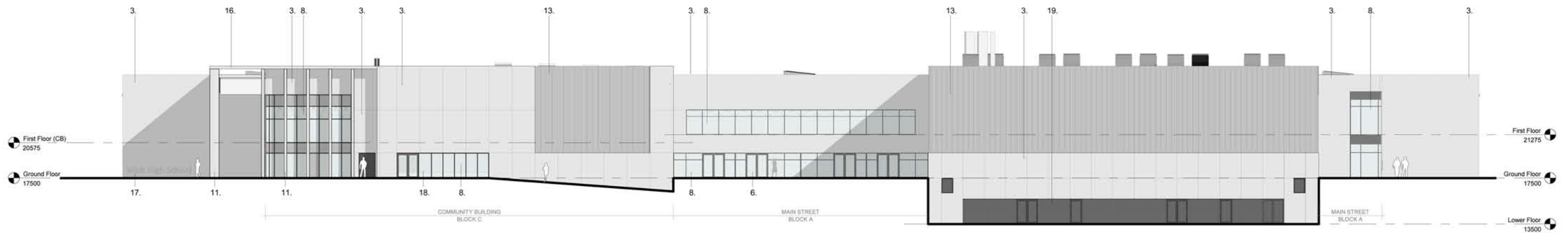
North East Elevation continued

1:200



North East Elevation

1:200

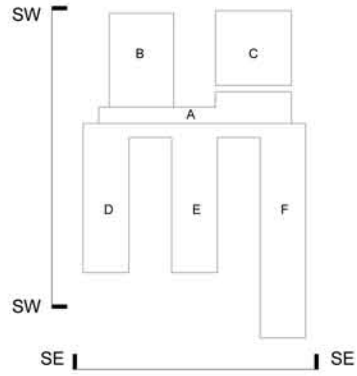


North West Elevation

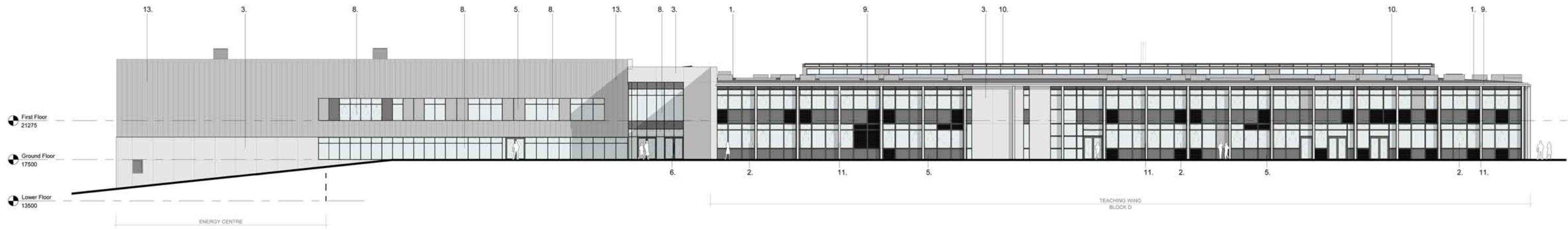
1:200

Hub North Scotland

Wick High School and East Caithness Community Facility: Elevations Sheet 01

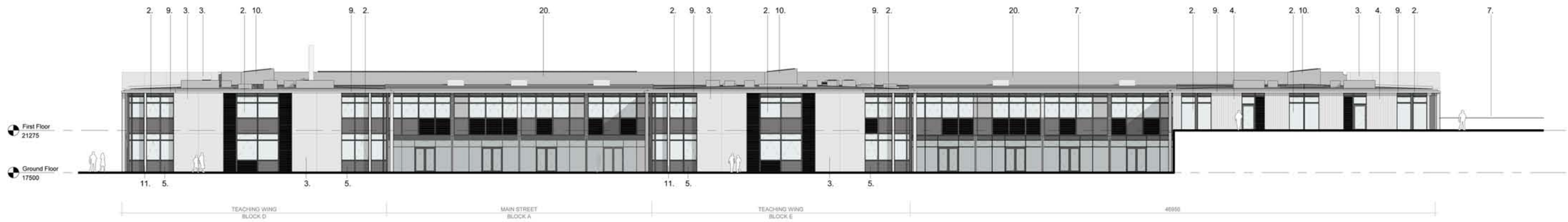


- ANNOTATION KEY:**
1. Aluminium standing seam roof
 2. PPC Aluminium clad timber framed window and louvre panel system with integrated concealed opening lights and glazed spandrel panels as required. Colour: TBC *Glazing / panel / and frame TBC*
 3. Acid etched precast concrete cladding panels with integrated recessed vertical and horizontal joints
 4. Acid etched precast concrete cladding with moulding (mould TBC)
 5. PPC aluminium spandrel panel. Colour: TBC
 6. Glazed entrance door - frame finish to match curtain wall system
 7. Retaining wall
 8. PPC aluminium curtain wall system with integrated concealed opening lights and glazed spandrel panels as required
 9. Anodised aluminium roof eaves cope / gutter profile
 10. Rooflight with operable vent windows to upstand
 11. Acid etched precast concrete vertical pier
 12. Galvanised access stair with balustrade
 13. Frameless translucent polycarbonate facade system
 14. Anodised aluminium soffit profile. Colour TBC
 15. Glazed balustrade with retractable glazed screen
 16. Acid etched precast concrete cope
 17. Embossed / recessed main signage to precast concrete panels
 18. Curtain walling with integrated fit as required
 19. PPC aluminium louvre wall with integrated door openings as required. Colour: TBC
 20. Grey coloured insulated panels. Colour: To match concrete panels
 21. Grey fibre cement cladding panel to inner parapet. Colour: To match concrete cladding panels
 22. Grey coloured facing blockwork. Colour: To match concrete cladding panels
 23. Concrete paving slabs over monolithic roof membrane



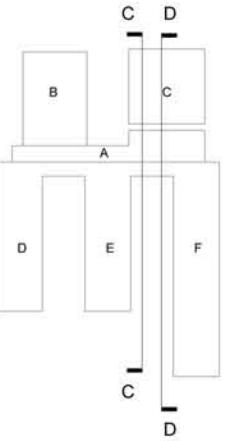
South West Elevation

1 : 200

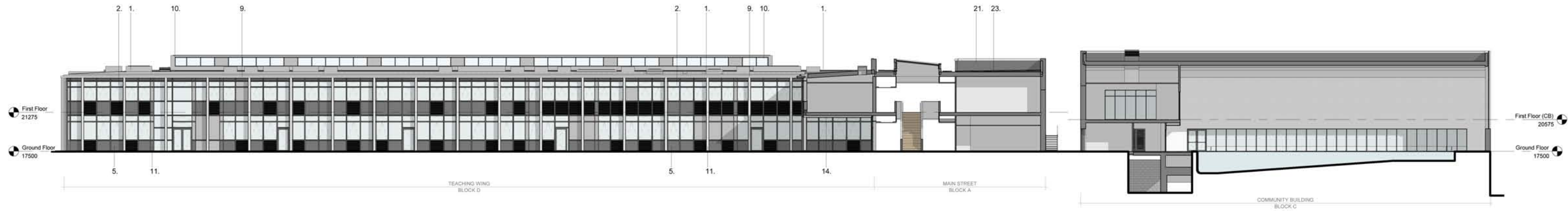


South East Elevations

1 : 200

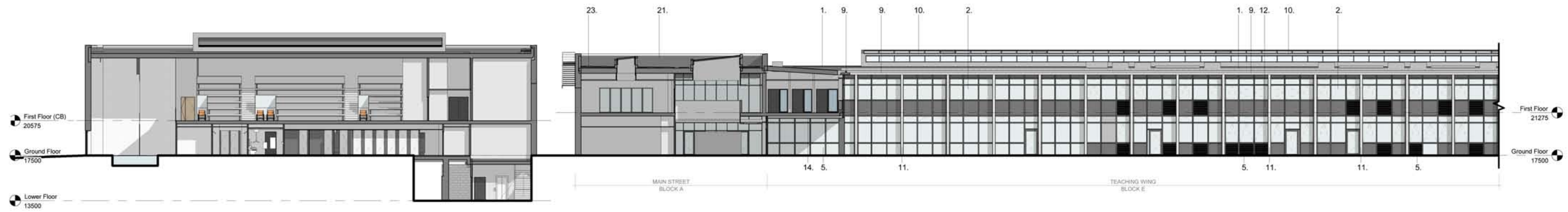


- ANNOTATION KEY:**
- 1. Aluminium standing seam roof
 - 2. PPC Aluminium clad timber framed window and louvre panel system with integrated concealed opening lights and glazed spandrel panels as required. Colour: TBC *Note: Glazing / panel/ and frame TBC*
 - 3. Acid etched precast concrete cladding panels with integrated recessed vertical and horizontal joints
 - 4. Acid etched precast concrete cladding with moulding (mould TBC)
 - 5. PPC aluminium spandrel panel. Colour: TBC
 - 6. Glazed entrance door - frame finish to match curtain wall system
 - 7. Retaining wall
 - 8. PPC aluminium curtain wall system with integrated concealed opening lights and glazed spandrel panels as required
 - 9. Anodised aluminium roof eaves cope / gutter profile
 - 10. Rooflight with operable vent windows to upstand
 - 11. Acid etched precast concrete vertical pier
 - 12. Galvanised access stair with balustrade
 - 13. Frameless translucent polycarbonate facade system
 - 14. Anodised aluminium soffit profile. Colour: TBC
 - 15. Glazed balustrade with retractable glazed screen
 - 16. Acid etched precast concrete cope
 - 17. Embossed / recessed main signage to precast concrete panels
 - 18. Curtain walling with integrated fit as required
 - 19. PPC aluminium louvre wall with integrated door openings as required. Colour: TBC
 - 20. Grey coloured insulated panels. Colour: To match concrete panels
 - 21. Grey fibre cement cladding panel to inner parapet. Colour: To match concrete cladding panels
 - 22. Grey coloured facing blockwork. Colour: To match concrete cladding panels
 - 23. Concrete paving slabs over monolithic roof membrane



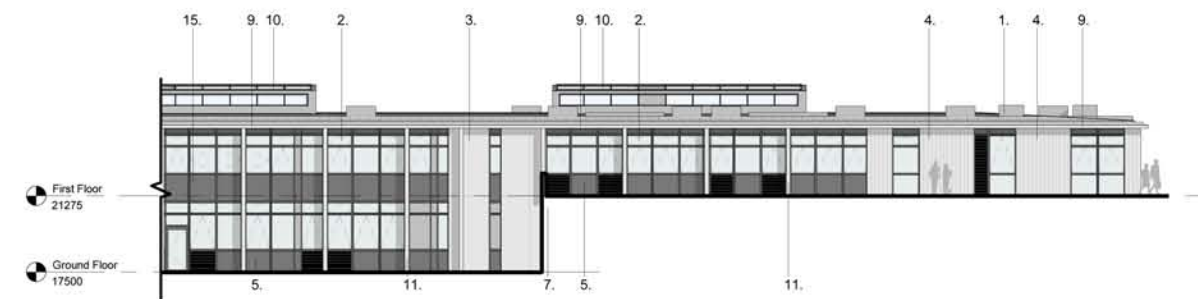
Section C - C

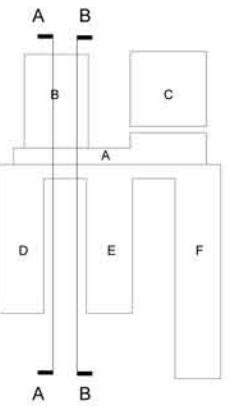
1 : 200



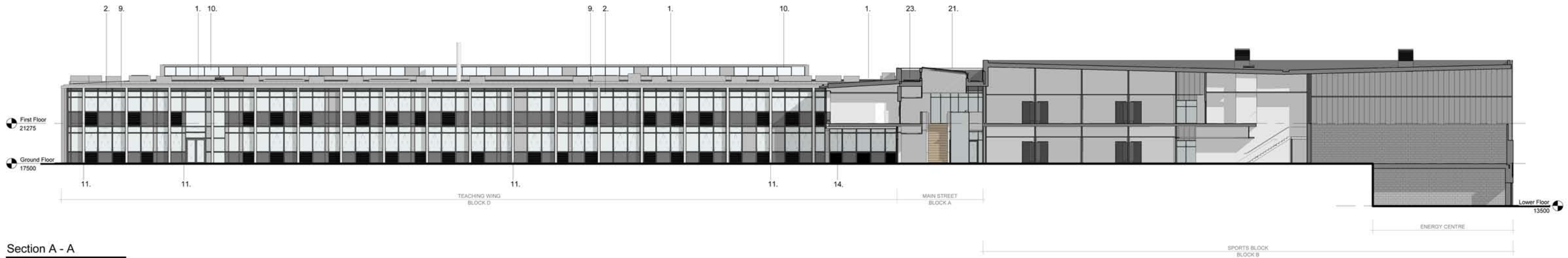
Section D - D

1 : 200



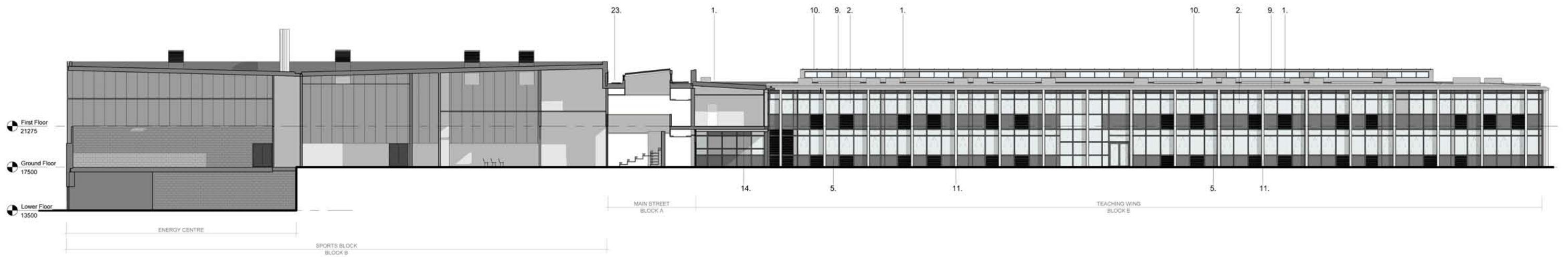


- ANNOTATION KEY**
- 1. Aluminium standing seam roof
 - 2. PPC Aluminium clad timber framed window and louvre panel system with integrated concealed opening lights and glazed spandrel panels as required. Colour: TBC *Glazing / panel / and frame TBC*
 - 3. Acid etched precast concrete cladding panels with integrated recessed vertical and horizontal joints
 - 4. Acid etched precast concrete cladding with moulding (mould TBC)
 - 5. PPC aluminium spandrel panel. Colour: TBC
 - 6. Glazed entrance door - frame finish to match curtain wall system
 - 7. Retaining wall
 - 8. PPC aluminium curtain wall system with integrated concealed opening lights and glazed spandrel panels as required
 - 9. Anodised aluminium roof eaves cope / gutter profile
 - 10. Rooflight with operable vent windows to upstand
 - 11. Acid etched precast concrete vertical pier
 - 12. Galvanised access stair with balustrade
 - 13. Frameless translucent polycarbonate facade system
 - 14. Anodised aluminium soffit profile. Colour: TBC
 - 15. Glazed balustrade with retractable glazed screen
 - 16. Add etched precast concrete cope
 - 17. Embossed / recessed main signage to precast concrete panels
 - 18. Curtain walling with integrated fit as required
 - 19. PPC aluminium louvre wall with integrated door openings as required. Colour: TBC
 - 20. Grey coloured insulated panels. Colour: To match concrete panels
 - 21. Grey fibre cement cladding panel to inner parapet. Colour: To match concrete cladding panels
 - 22. Grey coloured facing blockwork. Colour: To match concrete cladding panels
 - 23. Concrete paving slabs over monolithic roof membrane



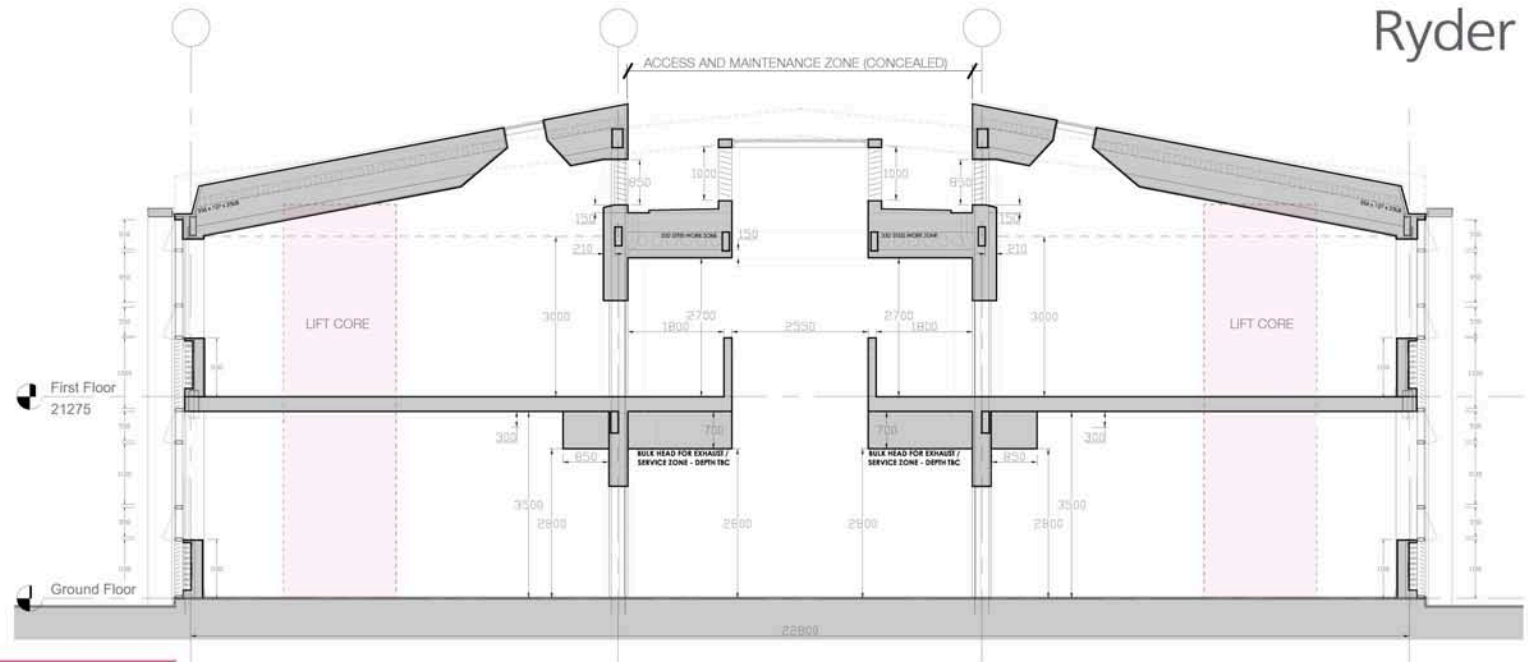
Section A - A

1 : 200

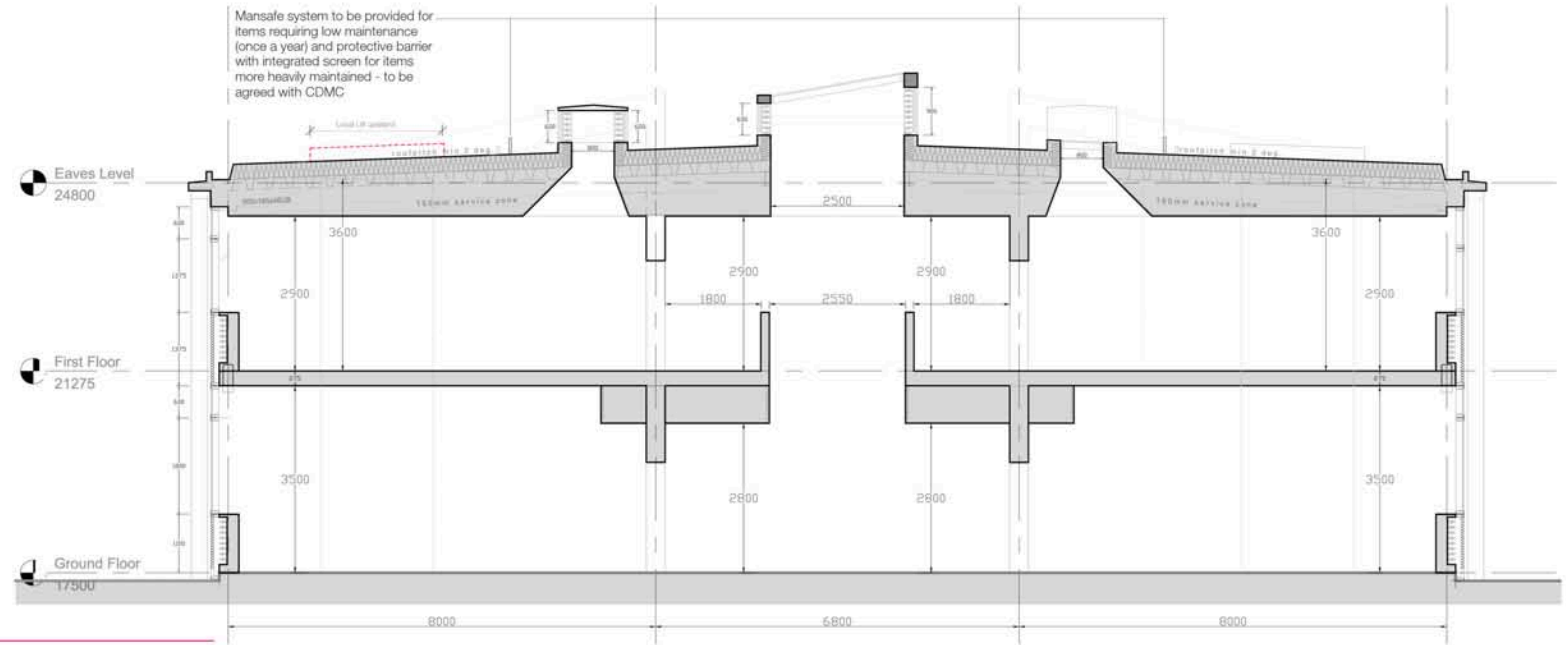


Section B - B

1 : 200



PLANNING SECTION AS SUBMITTED



ALTERNATIVE 'SHALLOW PITCH' SECTION

Hub North Scotland

Wick Joint Campus & East Caithness Community Facility: Teaching wing section comparison