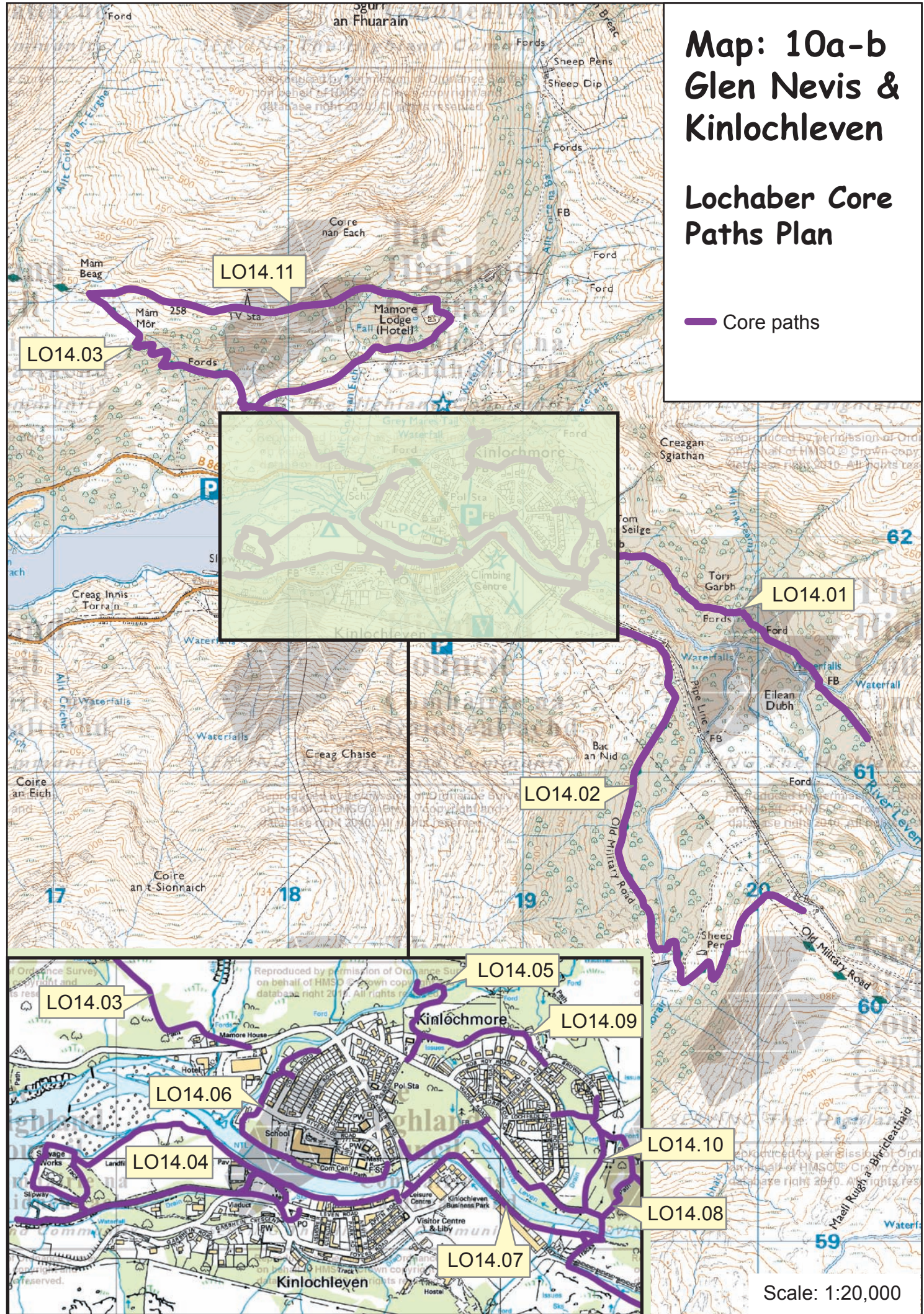
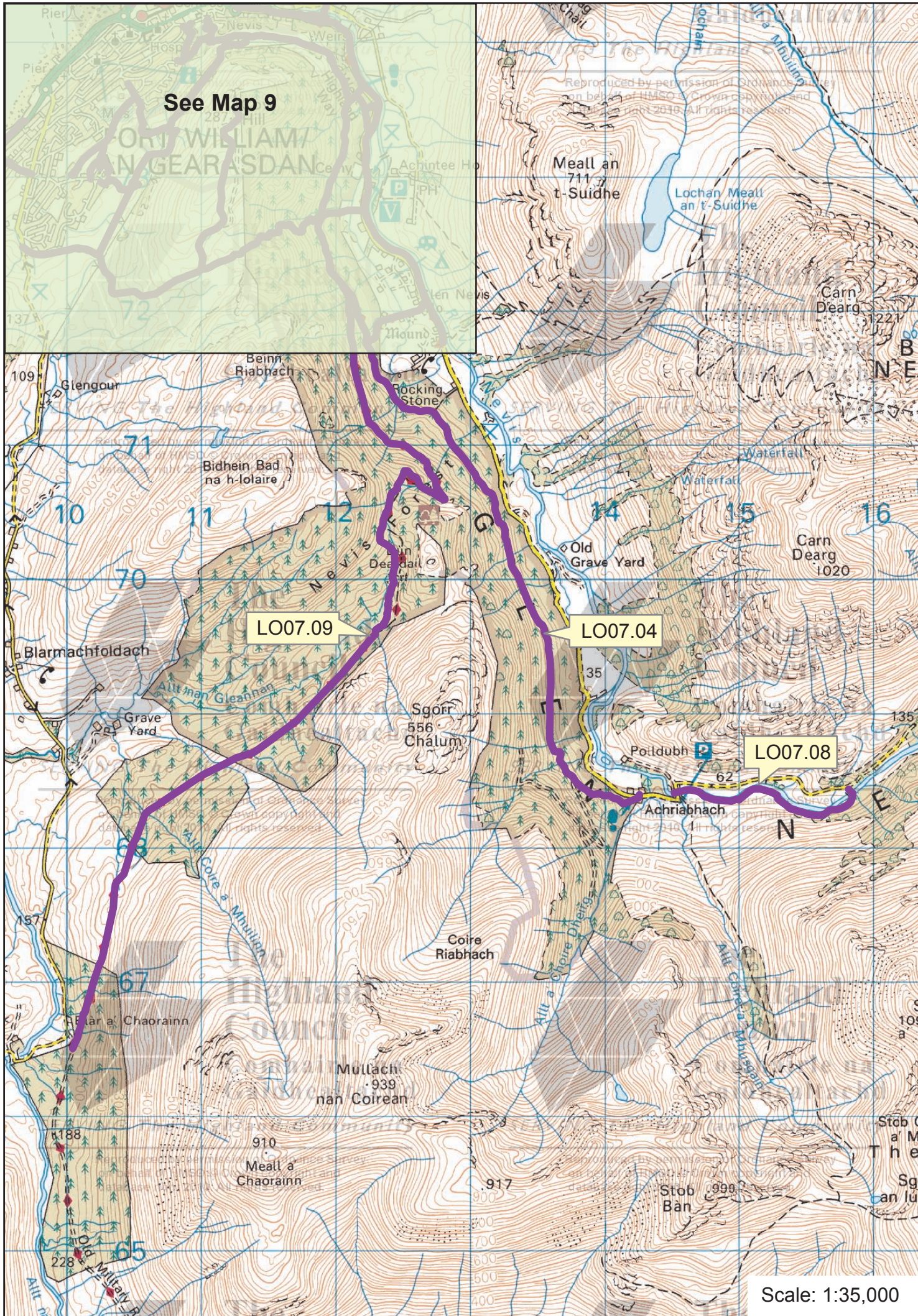


## Map: 10a-b Glen Nevis & Kinlochleven

### Lochaber Core Paths Plan

Path No.	Path Name/Route	Path Type	Length (kms)
LO07.04	Forest track to Achriabhach	forest track	5.5
LO07.08	Lower Falls to Paddy's Bridge	constructed path	1.6
LO07.09	Glen Nevis to Blar a' Chaorainn on West Highland Way	forest track/constructed path	7.7
LO14.01	Ciaran Path to site of POW Camp	track	1.9
LO14.02	Kinlochleven to Penstock on West Highland Way	constructed track	3.6
LO14.03	Kinlochleven to Mamore Track on West Highland Way	track/tarred pavement	1.7
LO14.04	Pier Circular Walk	track/constructed path/Dismantled puggy track	2.5
LO14.05	Grey Mare's Tail Waterfall	constructed path/trampled ground	0.4
LO14.06	Riverside Path	constructed tarred path/constructed stone path	0.8
LO14.07	Leven Bridges Circular Route	track (tar/stone)	0.9
LO14.08	Link from West Highland Way to Ciaran Path	trampled ground	0.2
LO14.09	Woodland Path - Wade's Road to Brown Terrace	constructed stone path	0.4
LO14.10	Brown Terrace to Bridge over River Leven	constructed stone path	0.2
LO14.11	Mamore Lodge Circuit with West Highland Way	track (stone/tar)	2.6





# Map: 10a-b Glen Nevis & Kinlochleven

## Lochaber Core Paths Plan

— Core paths