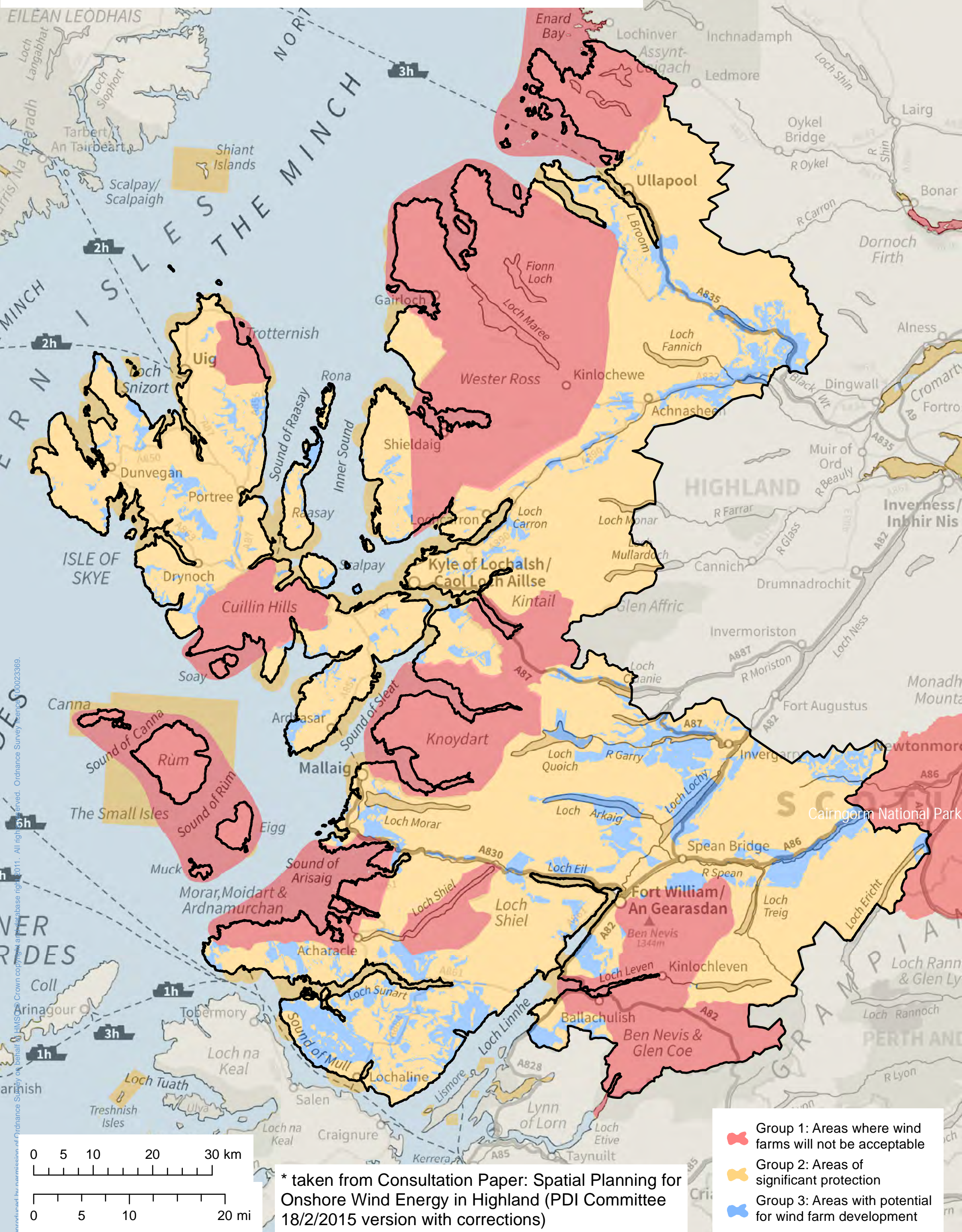


# Draft Spatial Framework Map\*: WEST HIGHLAND AND ISLANDS



\* taken from Consultation Paper: Spatial Planning for Onshore Wind Energy in Highland (PDI Committee 18/2/2015 version with corrections)

- Group 1: Areas where wind farms will not be acceptable
- Group 2: Areas of significant protection
- Group 3: Areas with potential for wind farm development

Ordnance Survey Crown Copyright and Database Right 2011. All rights reserved. Ordnance Survey Licence No: 100023369.