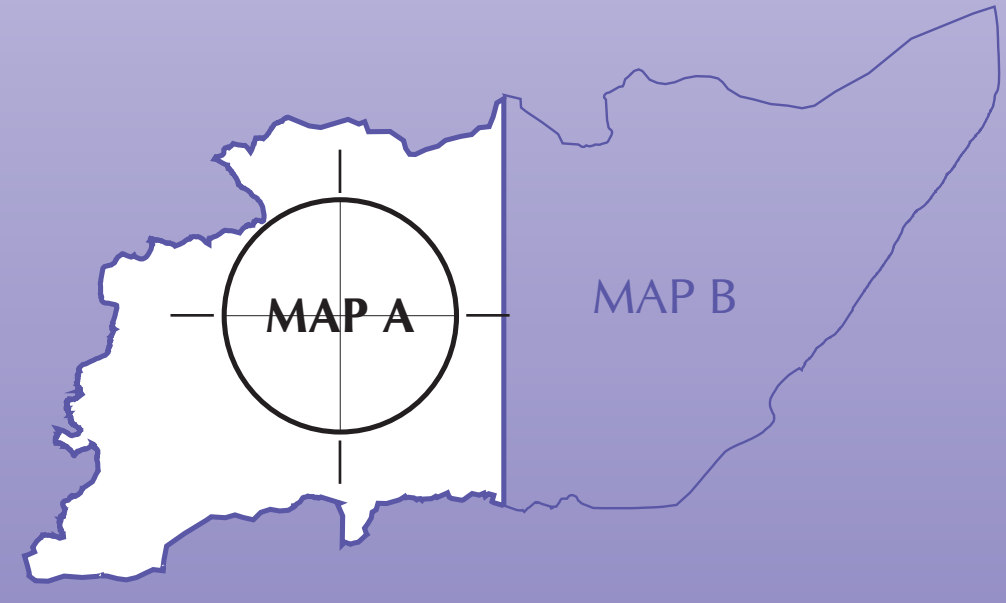


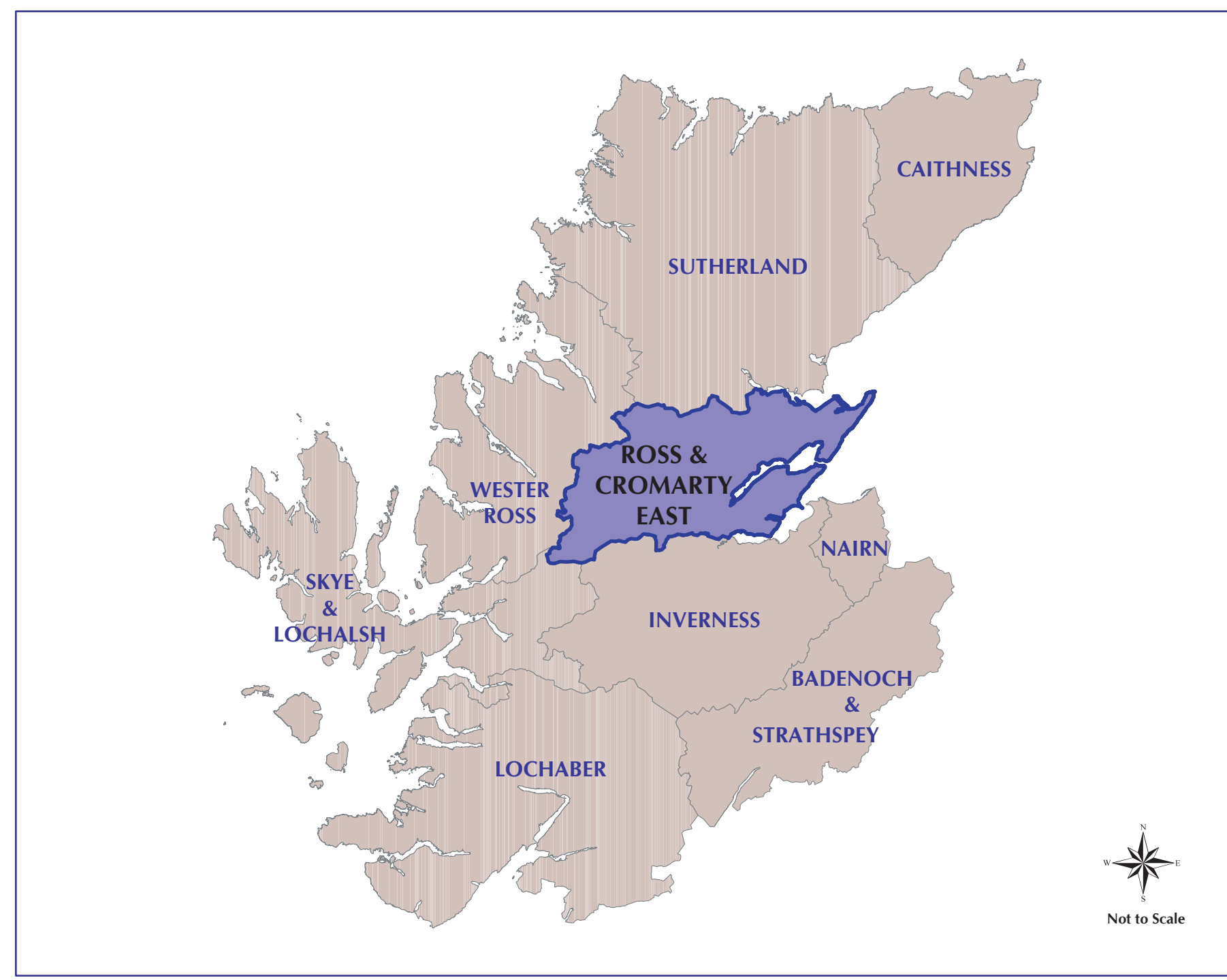
NOTE: Not all Policy Definitions are identified on the Proposals and Analysis Mapping. Background Policy Features are under constant review and therefore the Analysis Map is a point in time document, October 2003



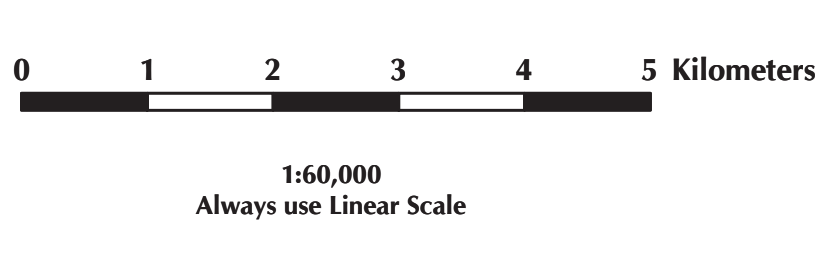
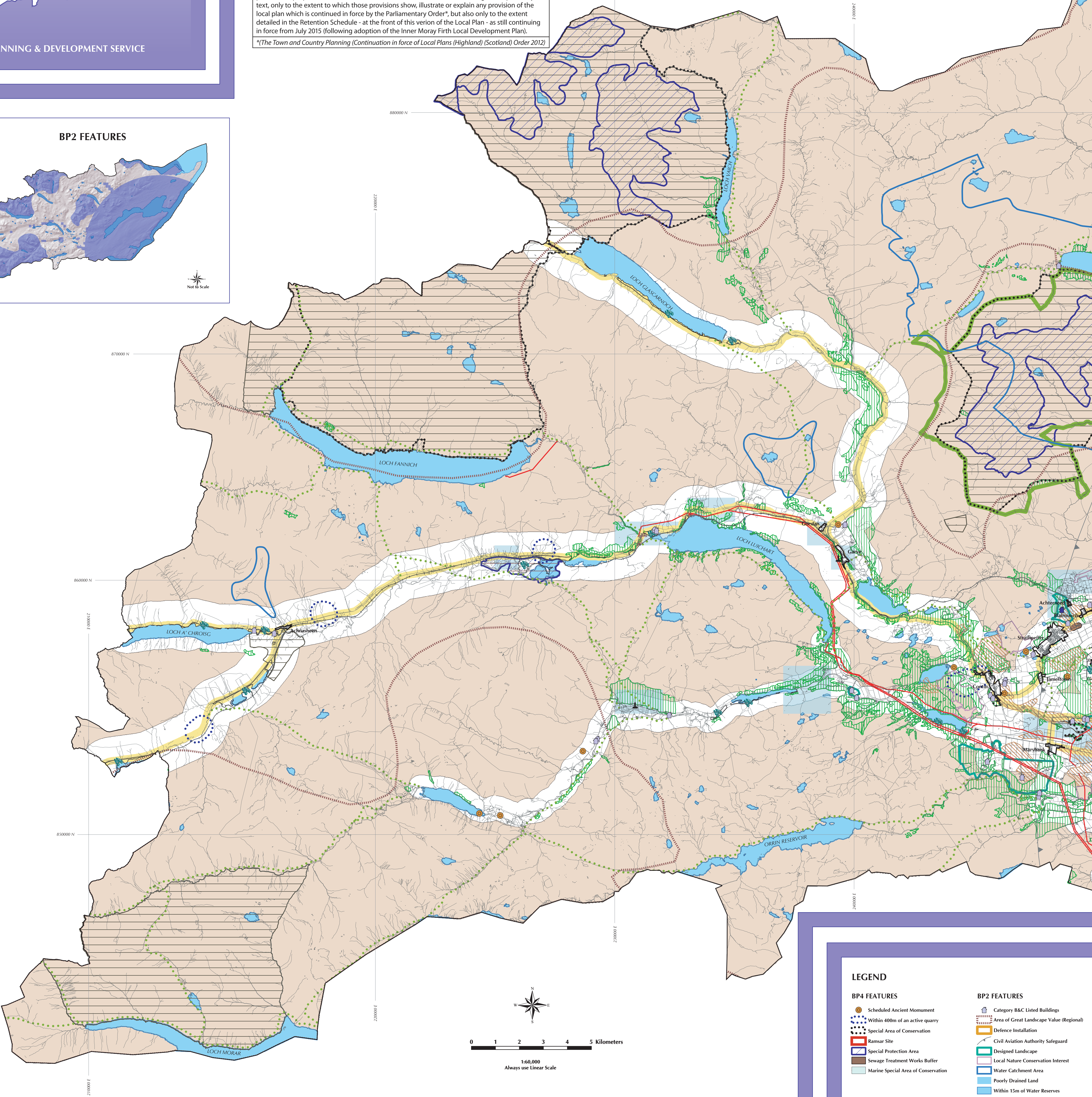
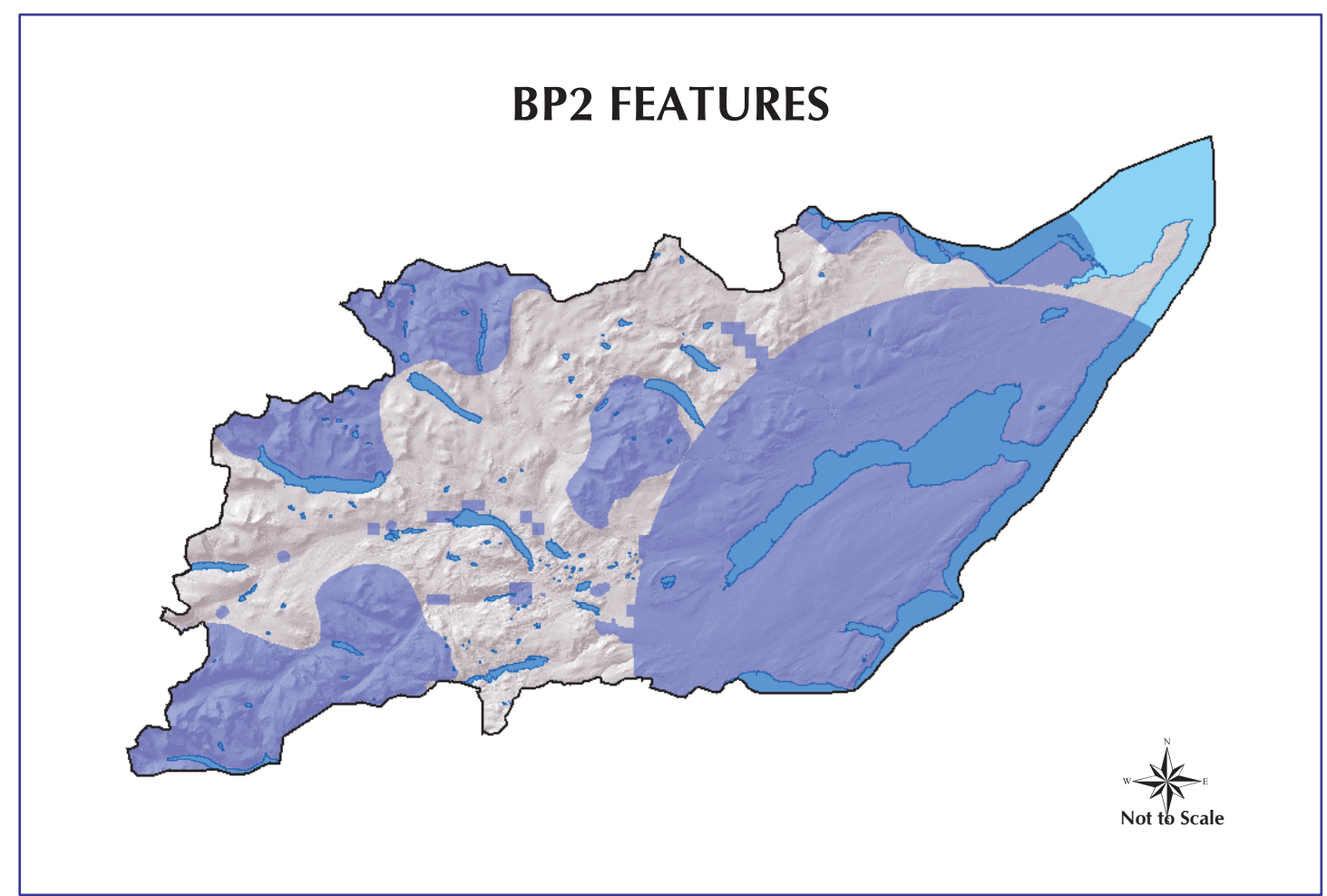
ROSS & CROMARTY EAST LOCAL PLAN
(As Continuing in Force, July 2015)
ANALYSIS MAP A



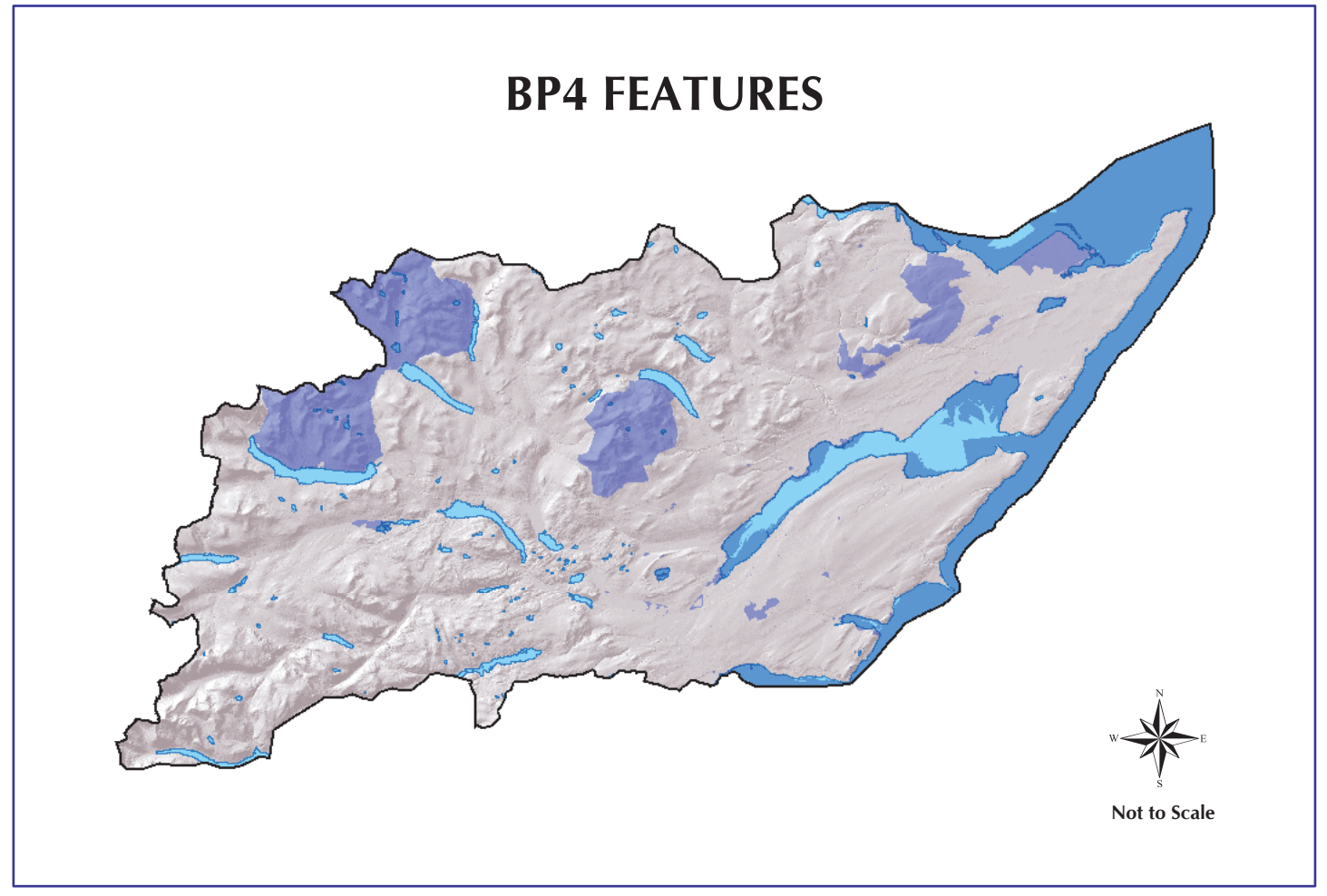
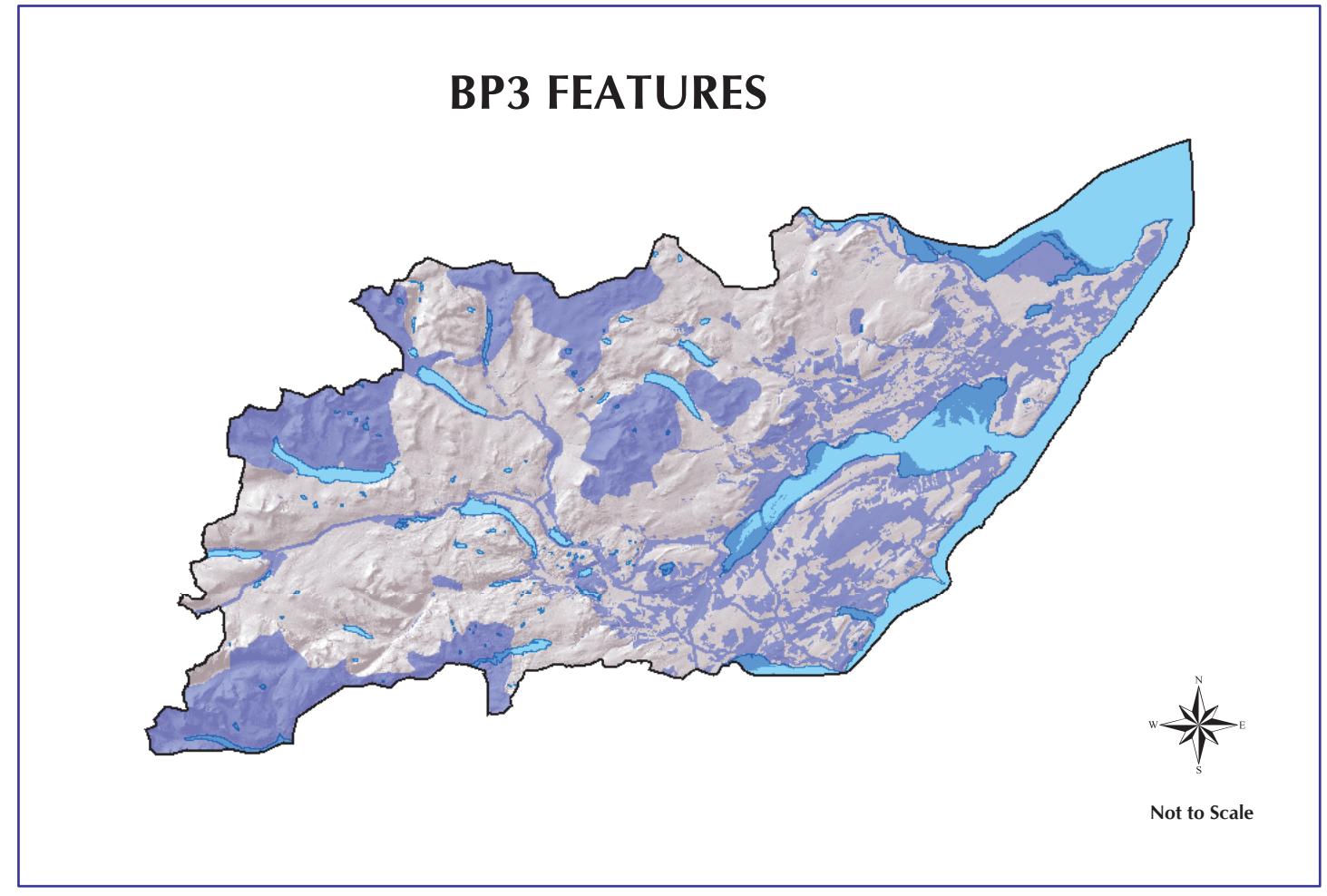
PLANNING & DEVELOPMENT SERVICE



Provisions of Local Plan map(s) as continuing in force, July 2015
The provisions of the Proposals Map (including any inset contained in or accompanying it and the policies and proposals shown on such inset) and related notations, referencing and explanatory text, only to the extent to which those provisions show, illustrate or explain any provision of the local plan which is continued in force by the Parliamentary Order*, but also only to the extent detailed in the Retention Schedule - at the front of this version of the Local Plan - as still continuing in force from July 2015 (following adoption of the Inner Moray Firth Local Development Plan).
*(The Town and Country Planning (Continuation in force of Local Plans (Highland) (Scotland) Order 2012)



LEGEND	
BP4 FEATURES	BP2 FEATURES
<ul style="list-style-type: none"> Scheduled Ancient Monument Within 400m of an active quarry Special Area of Conservation Ramsar Site Special Protection Area Sewage Treatment Works Buffer Marine Special Area of Conservation 	<ul style="list-style-type: none"> Category B&C Listed Buildings Area of Great Landscape Value (Regional) Defence Installation Civil Aviation Authority Safeguard Designed Landscape Local Nature Conservation Interest Water Catchment Area Poorly Drained Land Within 15m of Water Reserves National Scenic Area
BP3 FEATURES	OTHER
<ul style="list-style-type: none"> War Memorial Category A Listed Buildings Rights of Way Railway Line Pipelines Overhead Lines Within 1000m of Wind Generators Views over open water/coast Area of Great Landscape Value SSSI National Nature Reserve Prime Agricultural Land Semi-Natural & Ancient Woodland Tree Preservation Order Within 150m of Trunk/Major Road corridors Remote Area 	<ul style="list-style-type: none"> Local Plan Boundary Inset Boundary



Wood fibre from sustainable forests
Fully recyclable and biodegradable

Planning & Development Service
Glenurquhart Road
Inverness
IV3 5NX
Tel: (01463) 702250
fax: (01463) 702298