

THE HIGHLAND COUNCIL

ORDER TO EXEMPT LAND FROM ACCESS RIGHTS

THE HIGHLAND COUNCIL (OLD MAN OF STORR AND TROTTERNISH
RIDGE, SKYE) ORDER 2016

The Highland Council in exercise of the powers conferred on them by Section 11 (1) of the Land Reform (Scotland) Act 2003 ("the Act") hereby make the following Order:-

1. This Order may be cited as "The Highland Council (Old Man of Storr and Trotternish Ridge, Skye) Order 2016", and shall come into operation at 06:00hrs on 22 August 2016 until 10:30hrs on 22 August 2016 and again at 06:00hrs on 23 August 2016 until 10:30hrs on 23 August 2016 unless revoked earlier.
2. The Interpretation Act 1978 shall apply for the interpretation of this Order as it applies for the interpretation of an Act of Parliament.
3. The effect of the Order is to exempt land at: (1) The Old Man of Storr, Storr Forestry Plantation, Skye shown delineated in red on Plan 1 annexed and signed as relative to this Order; and (2) The Quiraing, Trotternish Ridge, South of the Staffin - Uig Hill Road to Bealach nan Coisichean, Skye shown delineated in red on Plan 2 annexed and signed as relative to this Order, from the access rights which would otherwise be exercisable in respect of that land by virtue of Part 1 of the Act. Rights of way are not affected by this Order.

Sealed with the Common Seal of The Highland Council and subscribed for them and on their behalf by Susan Blease, Proper Officer, at Dingwall on the 3rd day of August Two thousand and sixteen.



CERTIFIED AS A TRUE COPY

AT DINGWALL

ON 3 AUGUST 2016

SIGNED Claire McArthur

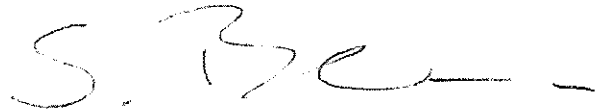
NAME CLAIRE MCARTHUR

THE HIGHLAND COUNCIL

ORDER TO EXEMPT LAND FROM ACCESS RIGHTS
THE HIGHLAND COUNCIL (OLD MAN OF STORR AND TROTTERNISH
RIDGE, SKYE) ORDER 2016

STATEMENT OF REASONS

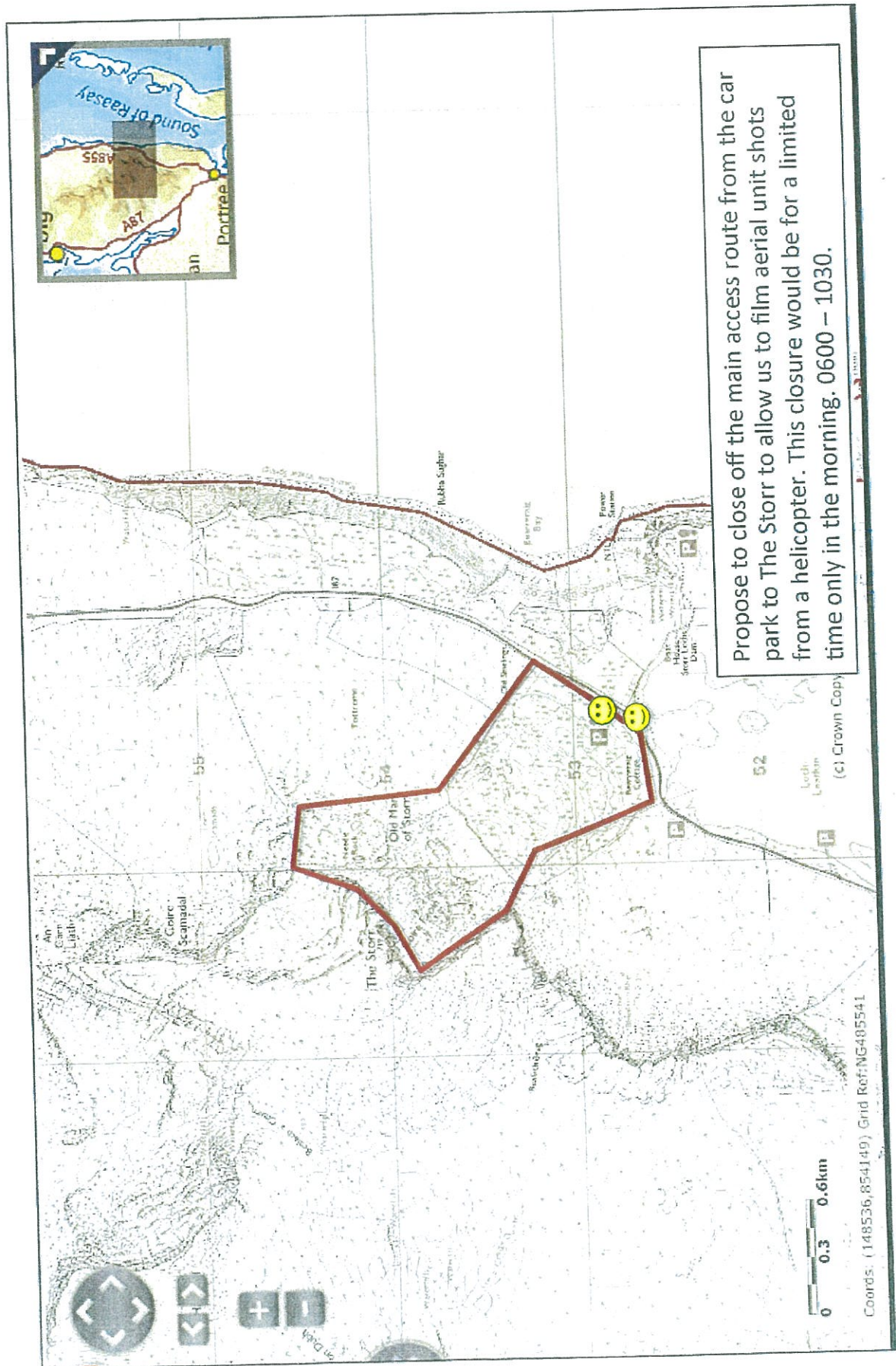
It is considered appropriate to exempt the land stated in the above proposed Order in the interests of safety of members of the public and safety/ security of cast, crew, horses and equipment on set during filming and preparations for filming.

A handwritten signature in black ink, appearing to read 'S. Be...', followed by a horizontal line.

This is Plan 1 referred to in the foregoing The Highland Council (Old Man of Storr and Trotternish Ridge, Skye) Order 2016

Location marshals to assist directing walkers around the set 😊

Old Man of Storr: Proposed area for closure

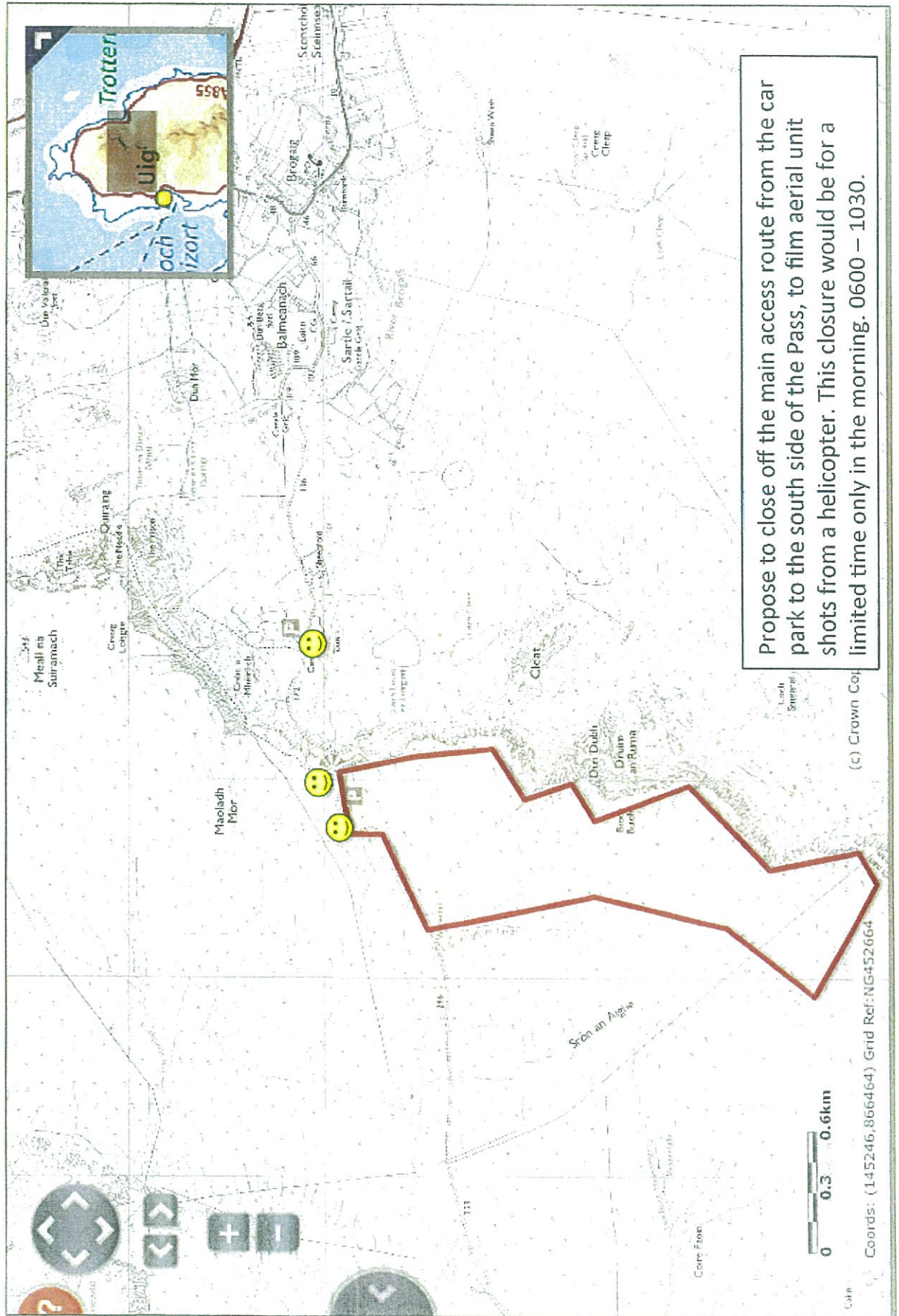


S. Ben

This is Plan 2 referred to in the ongoing The Highland Centre (Old mun of stor and Trotternish Ridge, Skye) order 2016

Location marshals to assist directing walkers around the set 😊

The Quiraing (South of the pass): Proposed closure



S.B.