

INSHES DISTRICT PARK – TIMELINE

PLANNING PERMISSION

- Planning permission for all three phases of the park was granted in 2007. The planning reference for this is :- 07/00145/NIDIN.

PARK DEVELOPMENT

- Construction work on Phase 1 of the park commenced in 2011 and Phase 1 of the park (North of Stevenson Road) was opened in August 2012.
- Developer contributions, from housebuilding in the Inshes area, which provides funding for the park's development, have continued to accrue since the opening of Phase 1.
- Funding is now sufficient to allow plans to be drawn up for the next phases of development within the land available. The illustration on the middle pages shows the area of land being considered.
- Public Consultation will start in October 2016.

NEXT STAGE

- Following comments and suggestions from the public Consultation, the park layout will be developed and refined. Consultation will continue with the Community Council and Inshes Community Association prior to finalising the plans.
- Plans and details will be submitted to the Planning Authority in accordance with the planning conditions.
- Planned construction of Phase 2—summer 2017.
- Planting works for Phase 2—November 2017 to March 2018.
- Opening of Phase 2—summer 2018.
- Phase 3 to follow as funding allows.

INSHES DISTRICT PARK

PHASE 2 AND 3

24th October 2016

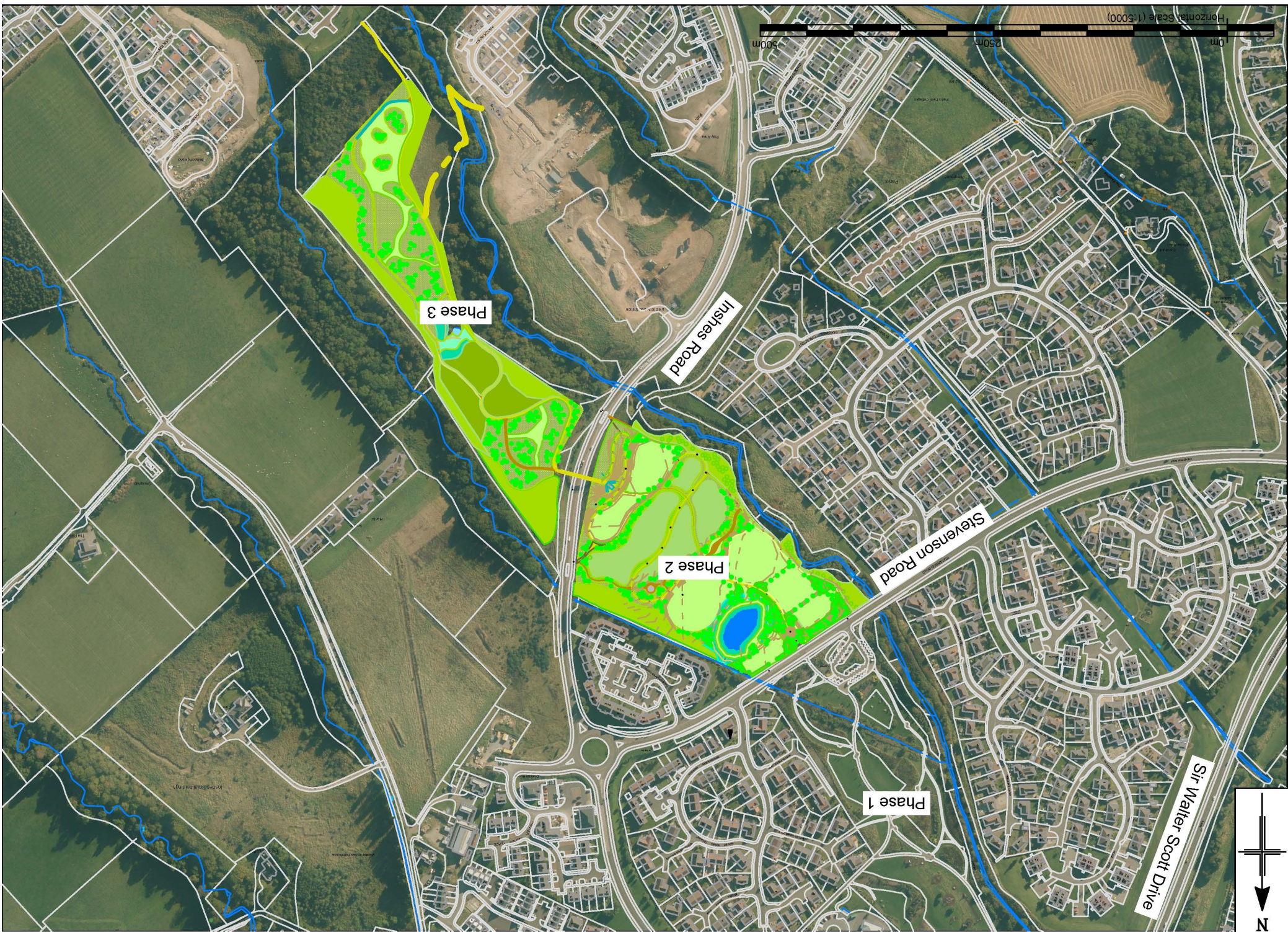
Welcome

Thank you for coming along today to see the proposed design for Phase 2 and 3 of Inshes Park. The Highland Council has been working to progress the scheme as an addition to Phase 1 of the park which was opened in August 2012.



We are available to answer questions today but if you would prefer, a comment sheet is available which can be handed to a member of staff or sent to The Highland Council at a later date.

For further information or comment contact Garry Smith on 01408 635 313 or garry.smith@highland.gov.uk



Horizontal Scale (1:5000)

0m 250m 500m

Phase 3

Inshes Road

Phase 2

Stevenson Road

Phase 1

Sir Walker Scott Drive

