

I n t r o d u c t i o n R o - r à d h

The Royal Burgh of Tain gained its royal charter in 1066, making it Scotland's oldest Royal Burgh. Tain today is a small but thriving town with a population of 4000.

It is the focal point for an extensive rural area stretching from Edderton in the west to Portmahomack in the east and Nigg in the South.

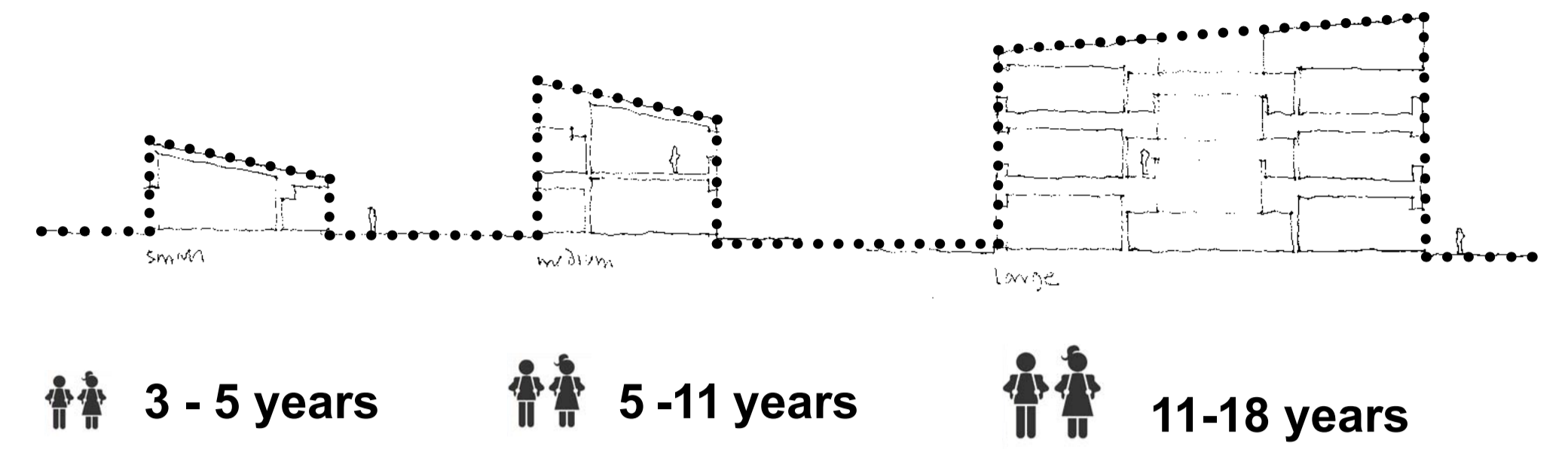
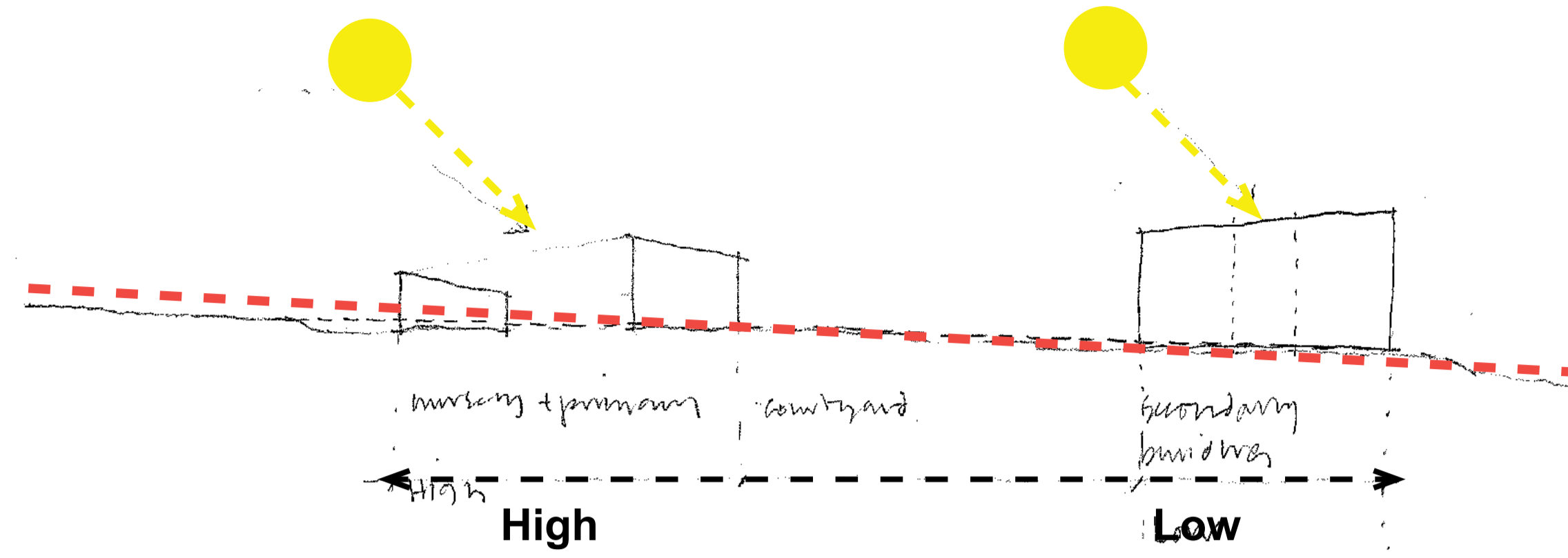
The A9 and the railway connect the town to the north and south of Scotland.

The location for the new 3-18 Campus is the existing Tain Royal Academy site. The site has an urban character, close to the town centre conservation area, with light industrial units to the north, in a predominantly residential setting.

As a major new community facility and school, the design of the new building should provide a strong connection with the town centre and should relate to Tain's local culture, historical context, topography and geography. It should also be designed in such a way that it creates a strong sense of place within the town of Tain.

SITING

The site has a gradual slope running from south to north, so the largest volumes have been placed at the lowest part of the site in order to reduce the overall impact of the building. In addition, by locating the larger elements to the north allows the sun's direct light to pass into the courtyard and around a larger perimeter of the building.



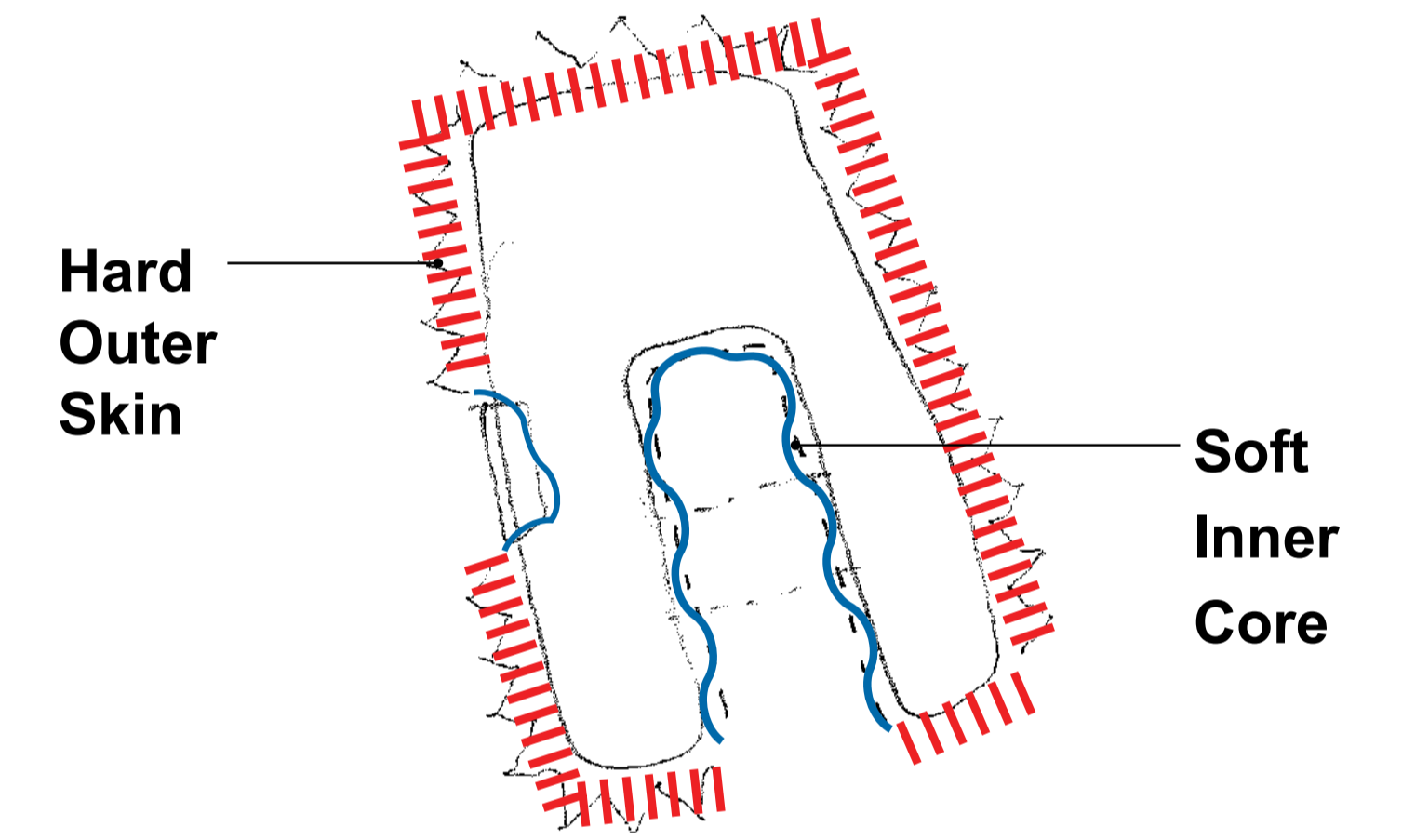
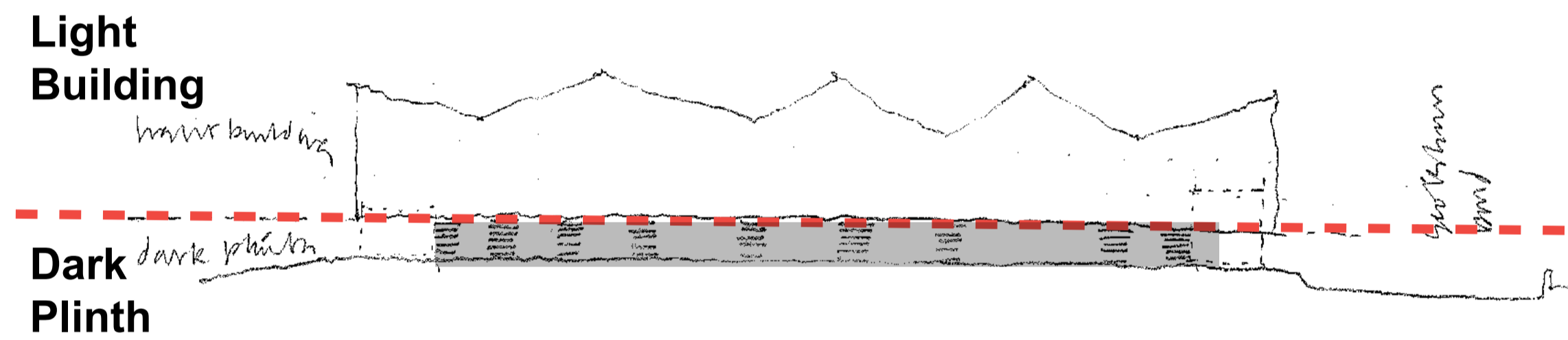
SCALE

The building elements range from single storey to 3 storey. The different scales of the school relate to the age groups of the pupils, so the primary and nursery wing is single to 2 storey, whilst the high school is arranged over 3 floors. The roof pitch of the structure is kept low in order to minimize its overall size.

MATERIALS

A limited palette of cladding materials has been suggested. A light coloured precast panel system sits upon a dark heavy plinth and the split will help to reduce the apparent scale of the elevations. In the north of Europe, the majority of our daylight is flat and diffused. A light coloured cladding will help to reflect and maximise the daylight around the building.

Timber is used in the primary school, nursery and St. Duthus as a cladding element which helps to identify the lower years part of the school. A softer, more tactile material is more suitable for the more intimate environments in and around the primary and nursery school.



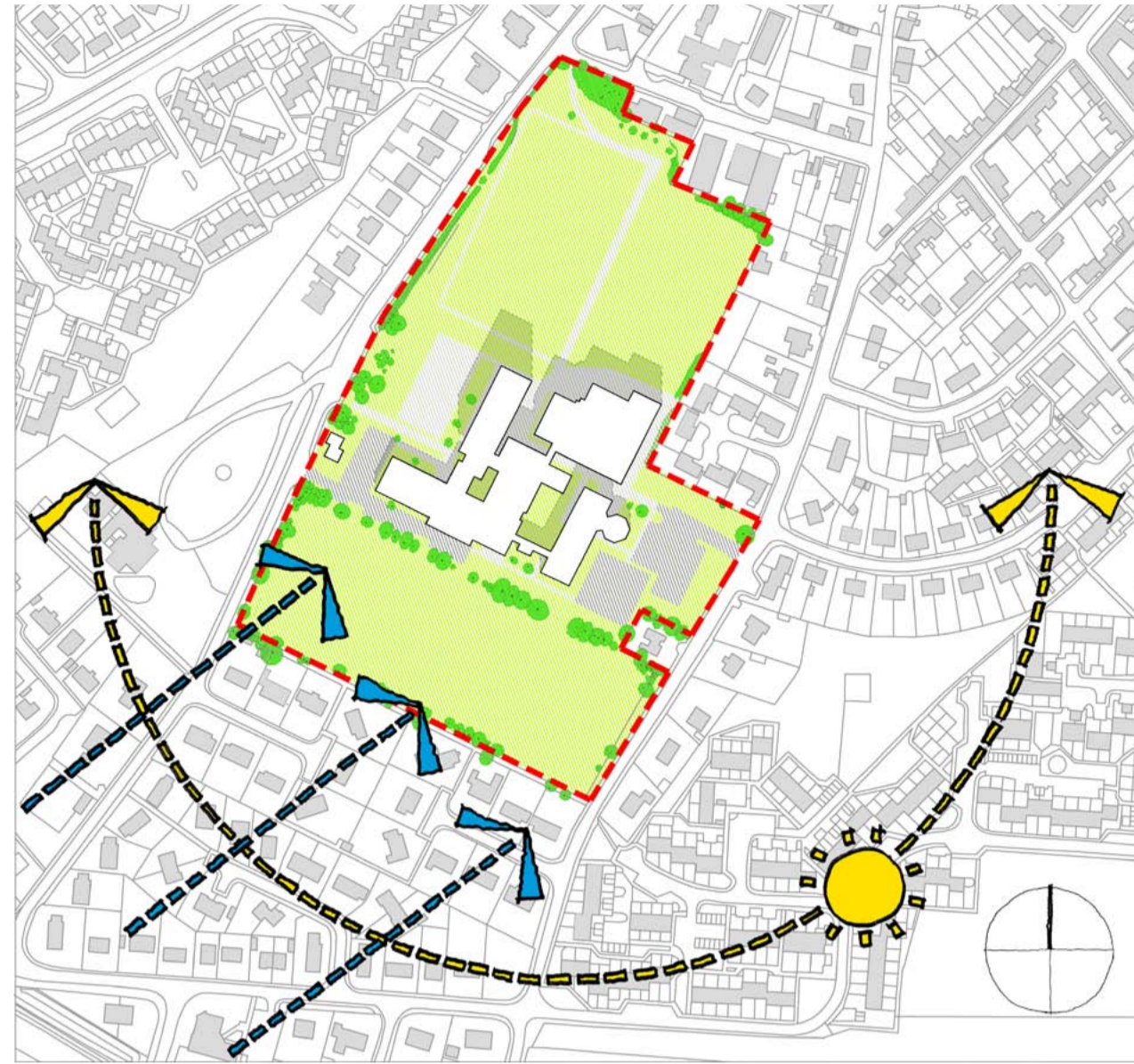
FORM

The building is split into 4 separate elements. The community, the secondary, St. Duthus, and the primary/nursery wing. These elements are arranged around a central courtyard.

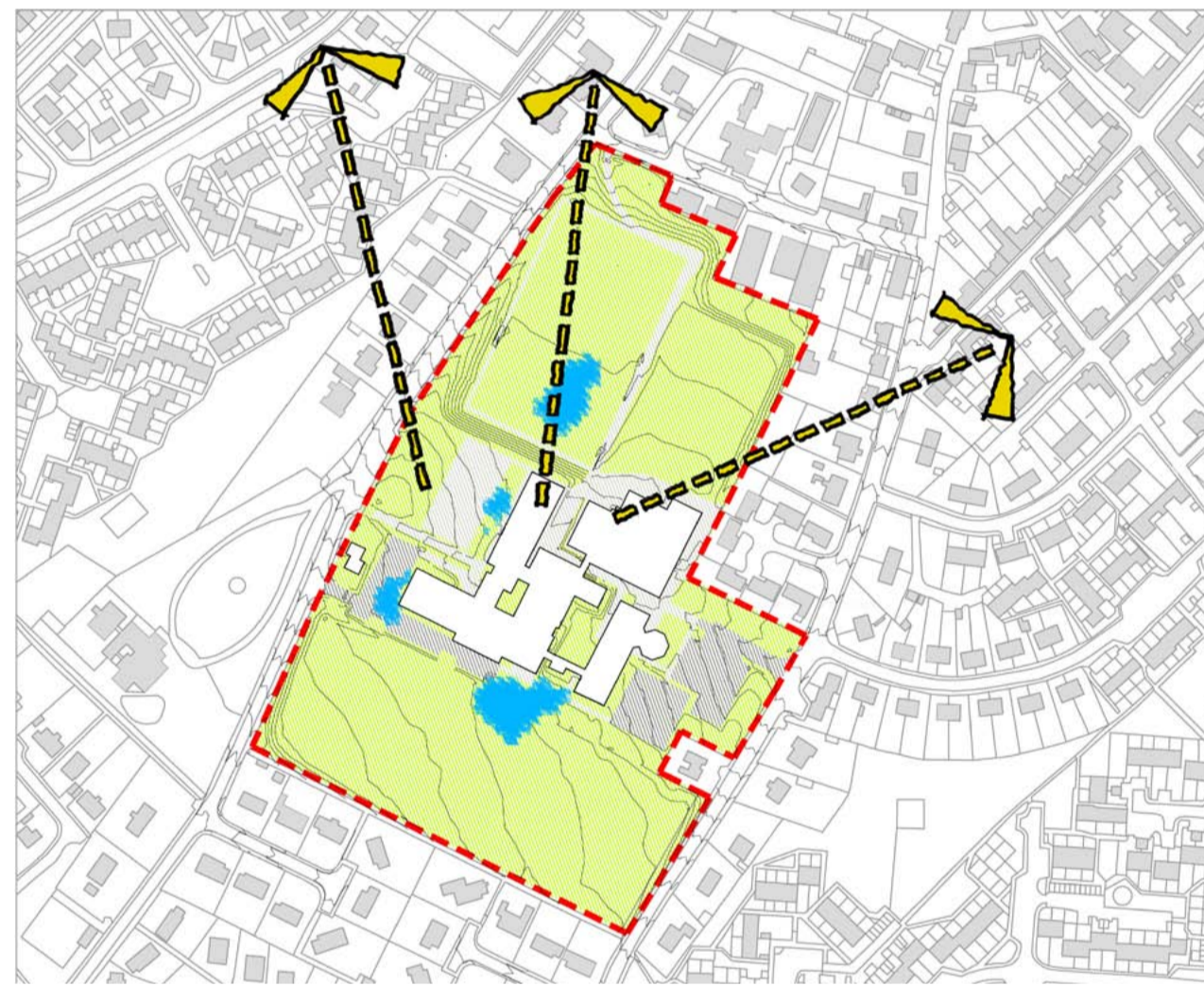
We drew upon certain points or moments in the townscape. At the head of the high street, 3 roads collide and form a partially enclosed space. Similarly, the area formed between Cadboll Place, and Upper King street opens out into a public, green space.

By arranging the individual building elements we can break down the scale and form a protected South East facing courtyard.





Wind & Sun

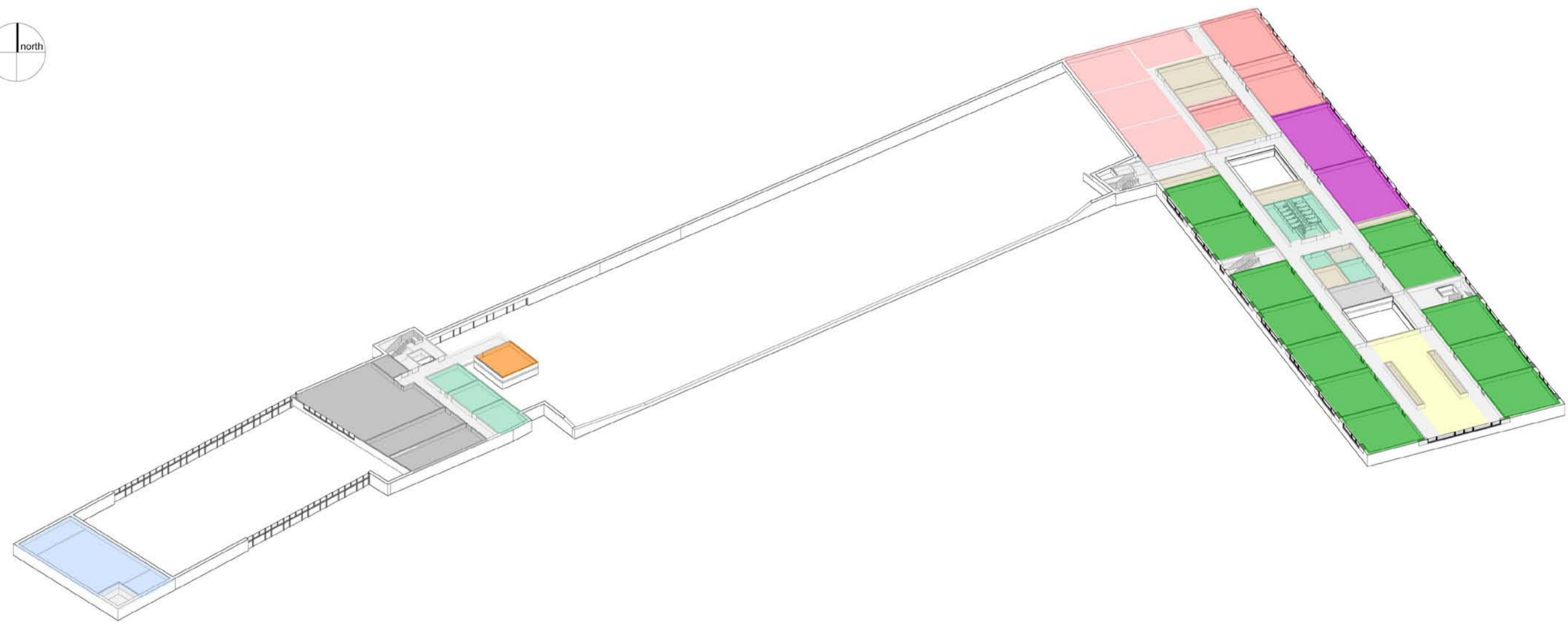
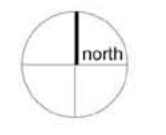


Views

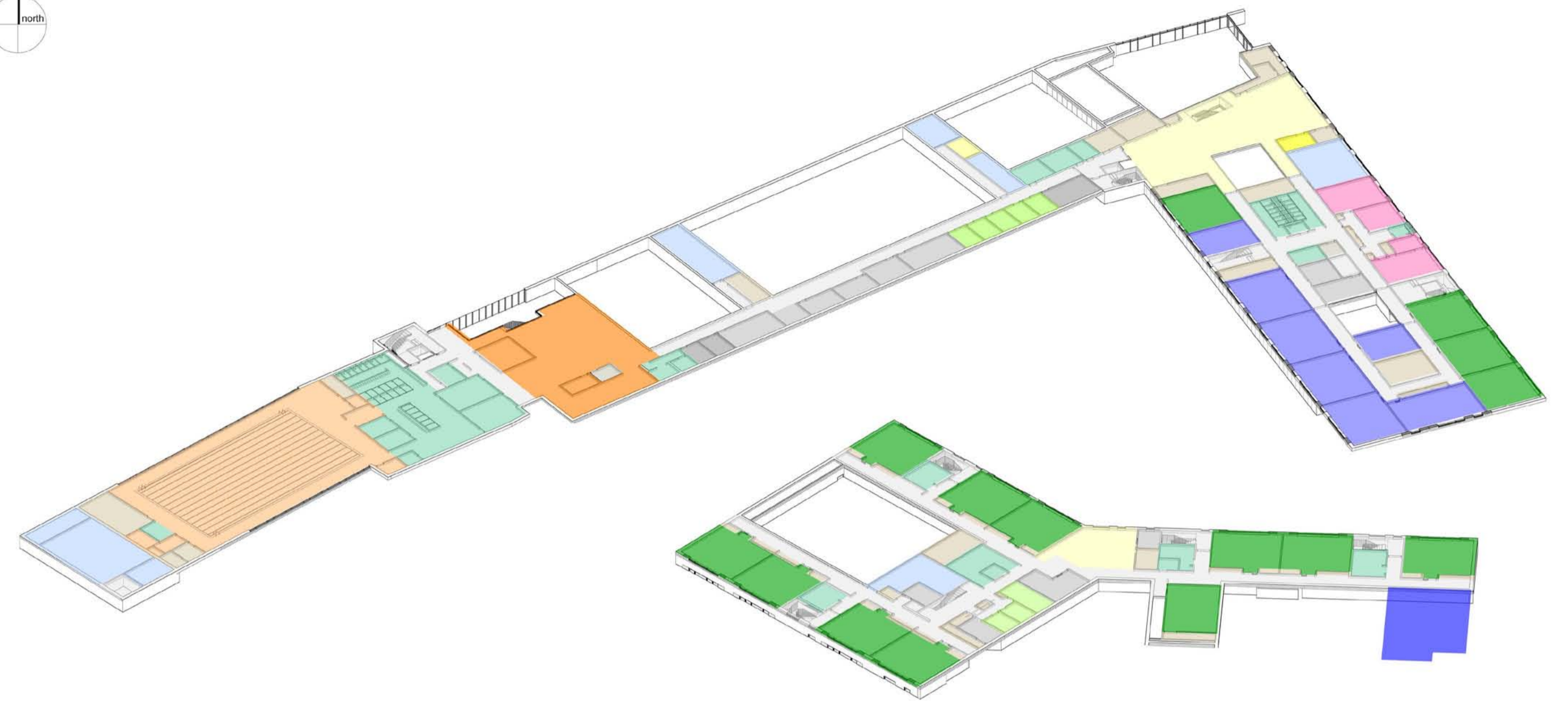
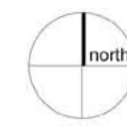


Boundary Conditions

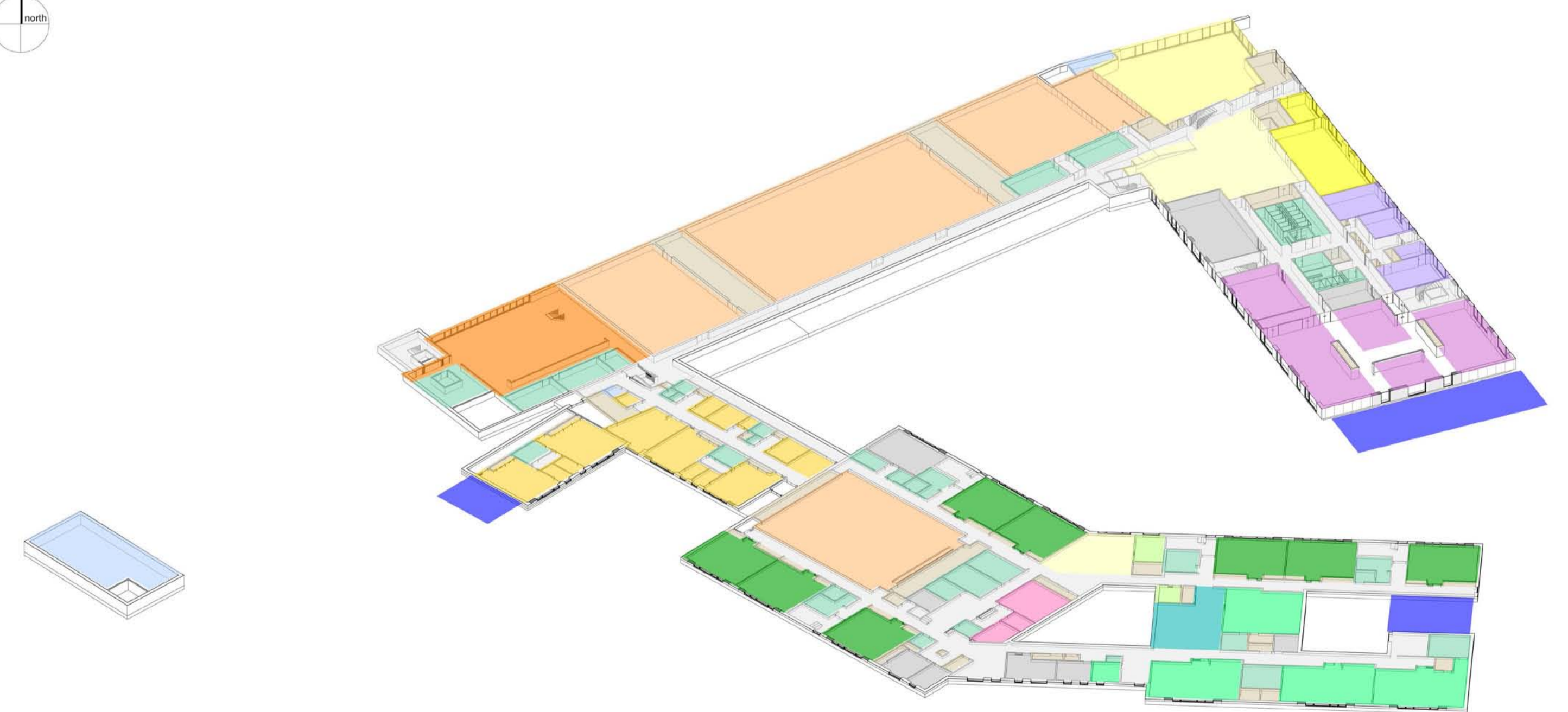
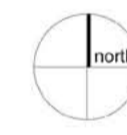




Second Floor



First Floor



Ground Floor

By Department Legend

- | | |
|------------------------|------------------|
| Admin | Kitchen |
| Art & Design | Learning Support |
| ASN | Library |
| Assembly | Music |
| Circulation | Nursery Classes |
| Comms | Nursery Cloaks |
| Community | PE |
| Craft & Design | Plant |
| Dining/Social/Breakout | Science |
| Future Expansion | Secondary SEBN |
| General Classes | St Duthus |
| Guidance | Stores |
| Home Economics | Toilets |



- Key
- Omega Zeta Panels
 - Dark Panels (Spec TBC)
 - Larch

East Primary



North Secondary



South Secondary

0m

50m



West Elevation



South Elevation



East Courtyard

Key







- Omega Zeta Panels
- Dark Panels (Spec TBC)
- Larch

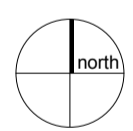
0m

50m



KEY

-  Electrical Cables
-  Foul Drainage
-  Services
-  Site Compound
-  Pitches
-  Demolition



As Existing
1:2500



Phase 01
1:2500



Phase 02
1:2500



Phase 03
1:2500



Phase 04
1:2500



Phase 05
1:2500