

Appendix 2 - Baseline Data Information and Maps

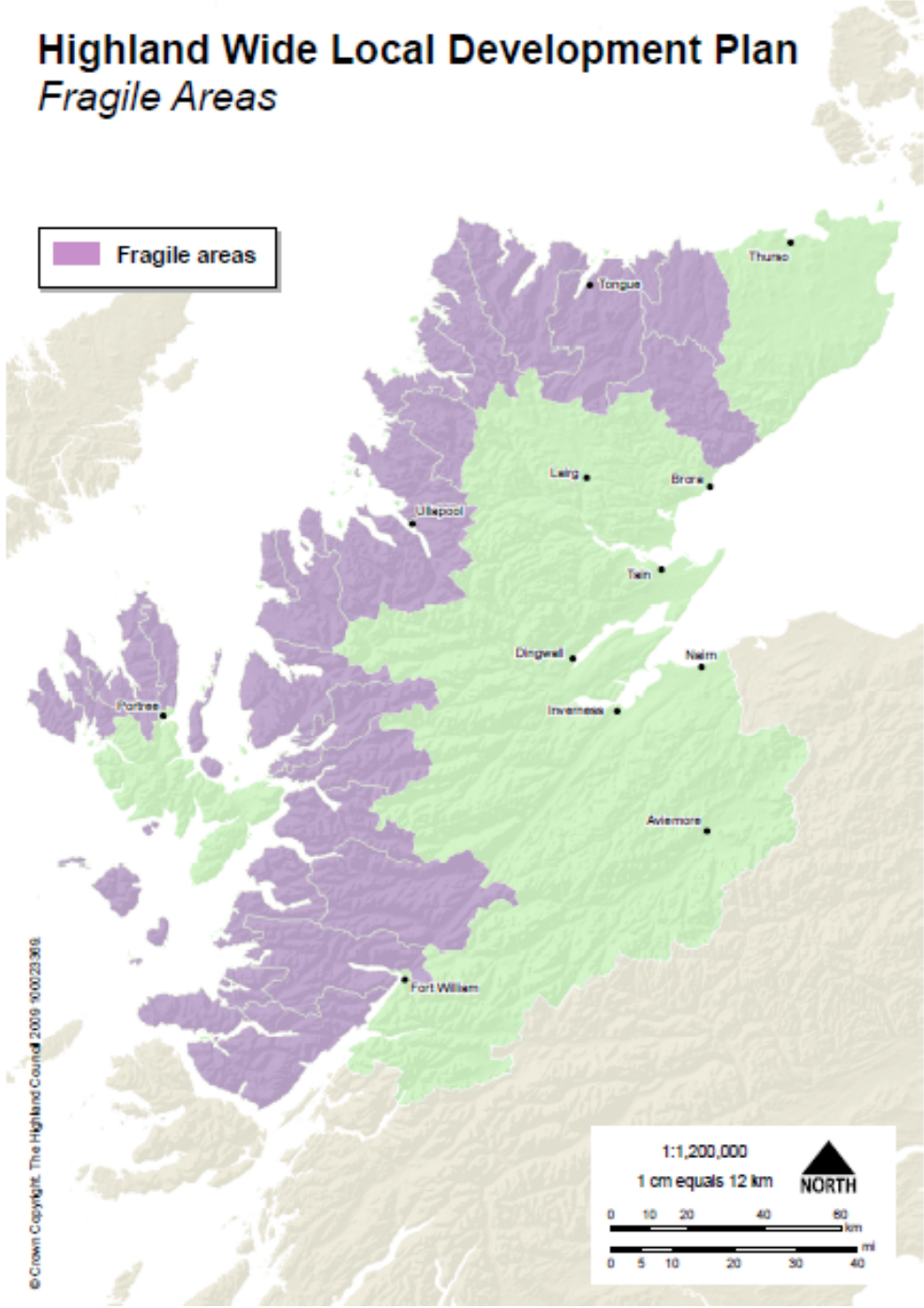
The information and maps in this section represent baseline data at a Highland wide Level. Date of data noted where known, otherwise taken as May 2010.

Key Information	Data Source
Population and Human Health	
Incidence of Coronary Heart Disease in Highland is 304 cases per 100,000 (Scotland – 306) for year ending 31 Dec 2006. 1997 figure was 396.	www.isdscotland.org
Highland wide in 2006 22 pedestrians and 5 cyclists were killed or serious injured in road accidents. 1994-98 yearly averages are 38 pedestrian and 16 cyclist fatalities.	www.scotland.gov.uk
82 non-domestic noise complaints received by Highland Council in 2006/7.	www.audit-scotland.gov.uk
Scottish Crime and Victimization Survey 2006 suggests 56% of respondents thought crime to be a 'big' problem (93% considered a problem overall). Feelings of safety while walking alone after dark is often used as a proxy measure for fear of crime. Overall, just over 3 in 10 respondents (32%) reported that they felt unsafe while walking alone after dark (which was the same as the proportion that reported feeling unsafe in the 2003 survey). Just over one in 10 (12%) reported that they felt 'very unsafe'. No regional data.	www.scotland.gov.uk
11 health-related walking groups operating in PPS area.	www.stepituphighland.org.uk
50% of Highland population walked a least on one day in the past week with the main aim been as a mode of transport (Scotland 53%). 64% walked at least one day in the past week just for pleasure or to keep fit (Scotland 46%).	SHS Transport Across Scotland 2005-2006
208, 914 people living in Highland.	Census 2001 http://195.173.143.171/plintra/iandr/cen/prof_high.htm
Highlands population is projected to increase by 3.6% by 2024. There is expected to be 16, 029 more people of retirement age and 5507 fewer children than in 2004. therefore the population is expected to age.	Highland Council population Projections 2004-2024 http://www.highland.gov.uk/NR/rdonlyres/20D86A3A-5750-42B3-927D-21000CD24694/0/bn8popproj.pdf
3 data zones in highland Region fall within the 5% most deprived zones in Scotland. 2 data zones fall within the top 5% least deprived.	The Scottish index of multiple Deprivation 2004 http://www.highland.gov.uk/NR/rdonlyres/796EA9D0-C754-4A2D-9799-DBB026E6A611/0/simd2004_paper.pdf

<p>A large proportion of Highland Region is referred to as “Fragile” in terms of remoteness and scarcity of population. An average of 8 people live per sq km, throughout the region, reducing to 2 people per sq km in some parts.</p>	<p>Highland Council Definition of Fragile Rural areas in Highland. http://www.highland.gov.uk/NR/rdonlyres/267DCD97-B9B0-4BF3-BE1C-15D662186C48/0/fragile_paper.pdf</p>
<p>Quantity of open space in Highland. Proportion of households within 1500m of open space. Proportion of sites of average standard or above.</p>	<p>Highland Green Space Audit.</p>

Highland Wide Local Development Plan

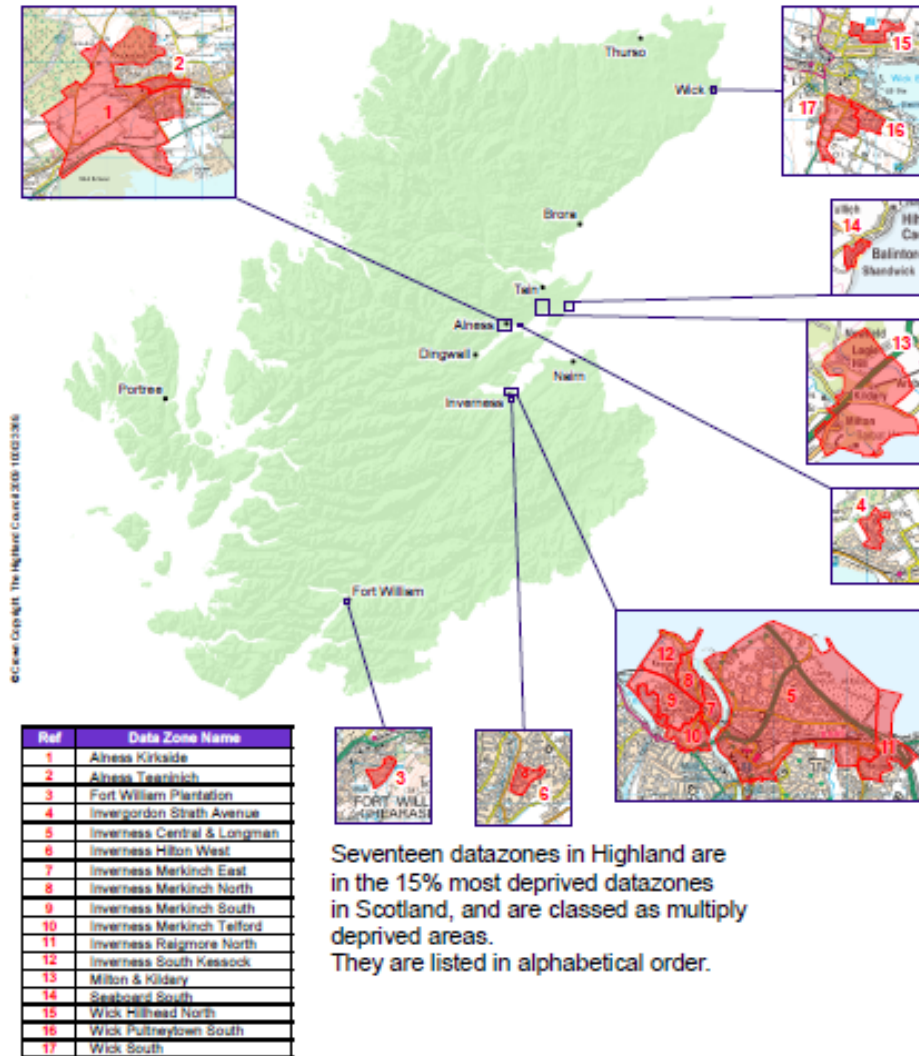
Fragile Areas



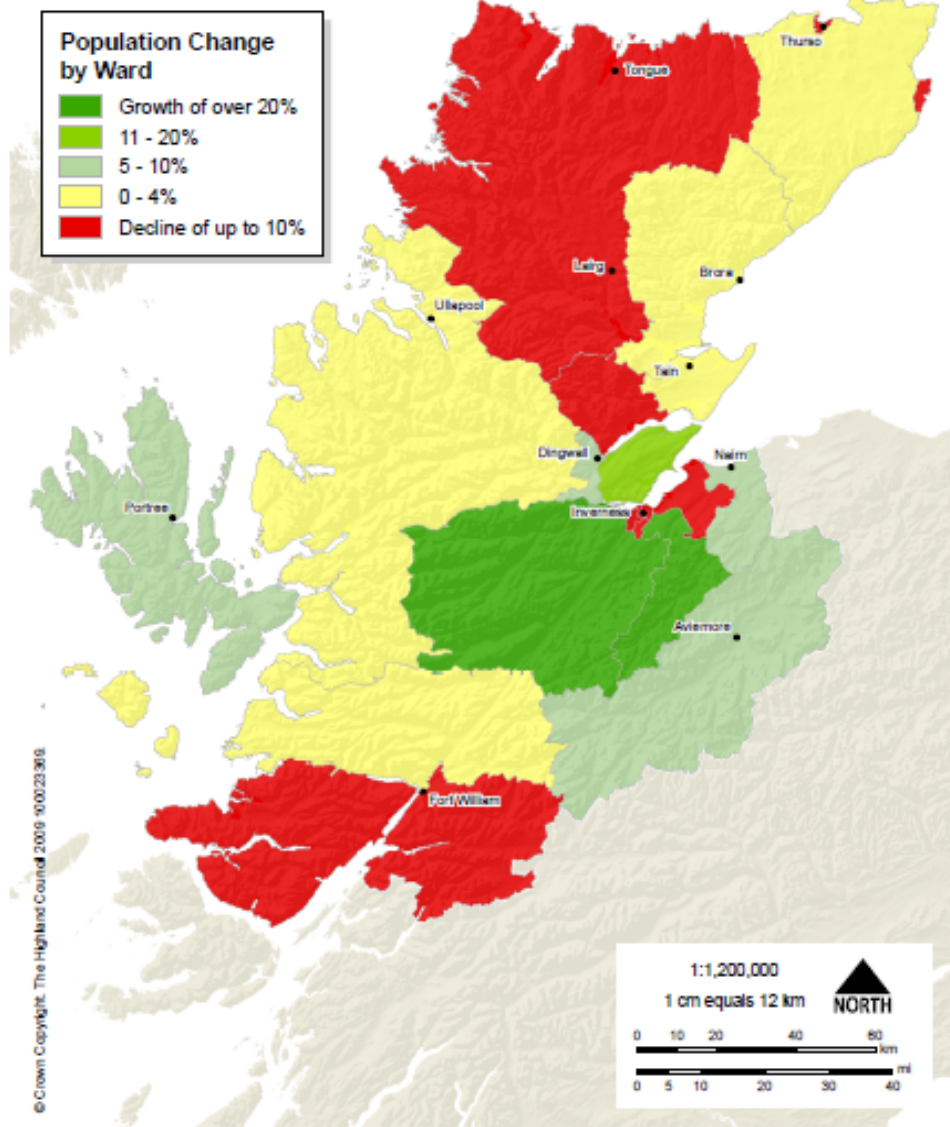
Highland Wide Local Development Plan

Most Deprived Areas in Highland

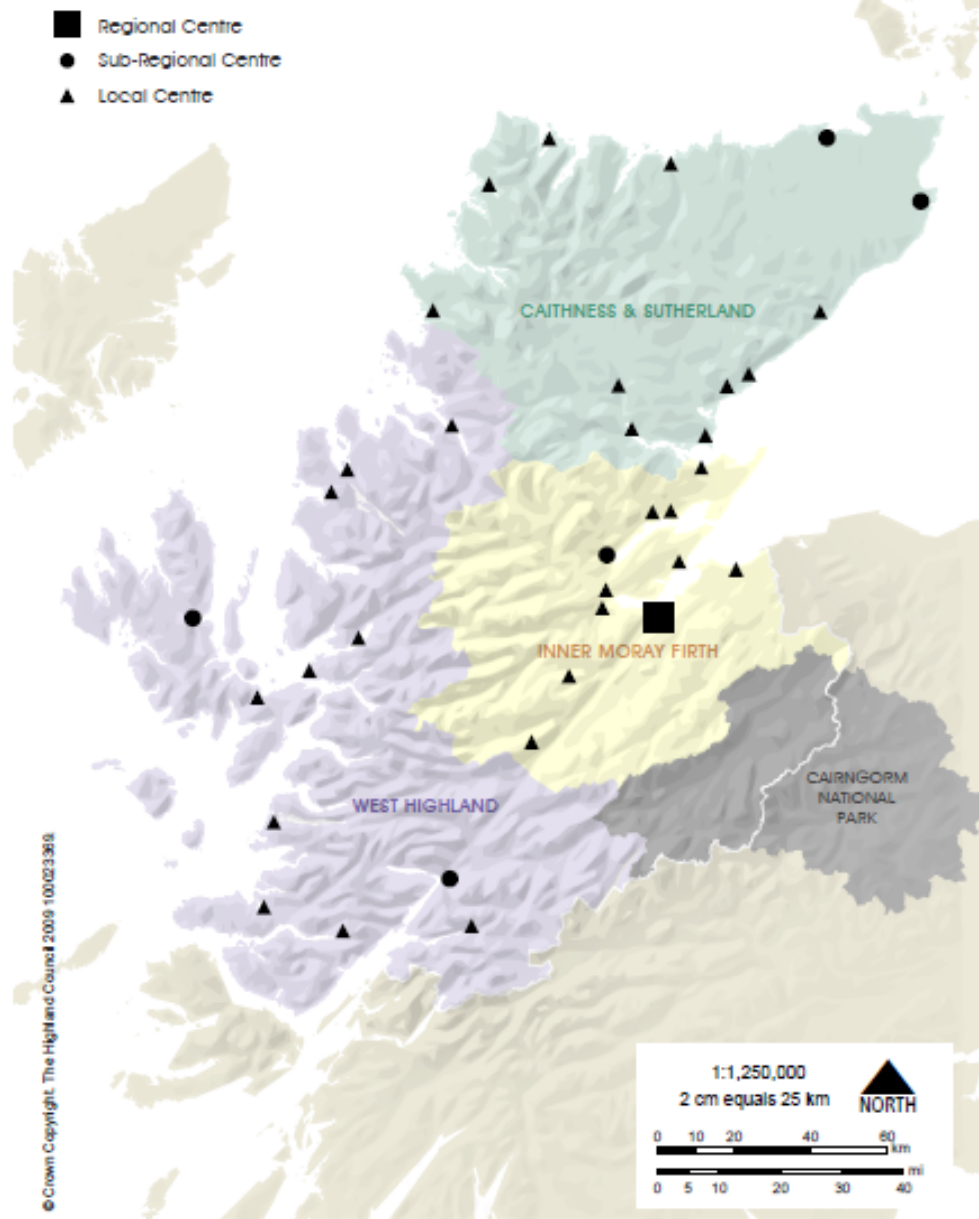
Scottish Index of Multiple Deprivation 2006



Highland Wide Local Development Plan Population Change 1998 to 2007



Highland Wide Local Development Plan *Settlement Hierarchy*

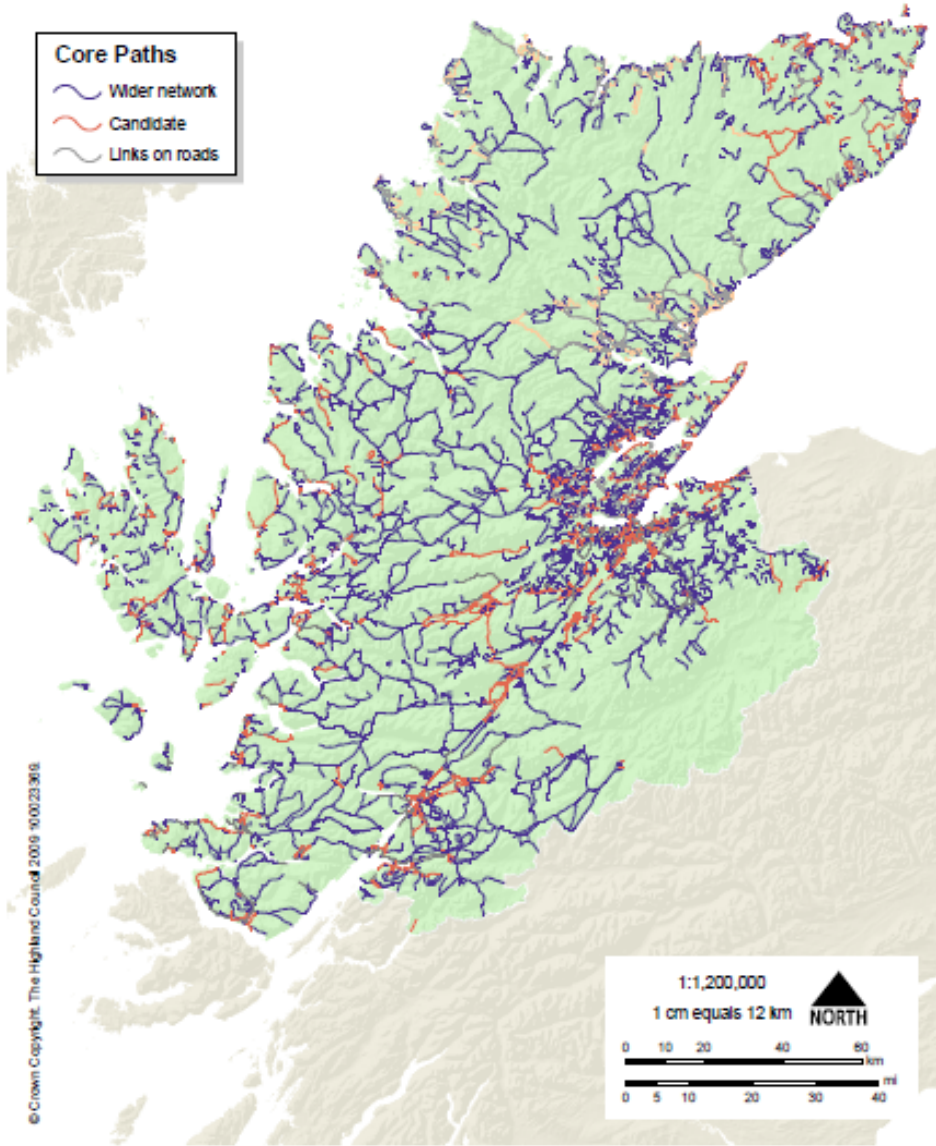


Material Assets	
There are 13, 329 housing units available in Highland between 2007 -2011	The Highland Council housing land Audit 2006 http://www.highland.gov.uk/NR/rdonlyres/B3104D9D-838A-42F1-B679-AE682078AE23/0/briefingnote24.pdf
A quarter of all house sales in highland are to people from out with the area.	Highland Council Paper – House Sales – What do they tell us about migration in Highland. http://www.highland.gov.uk/NR/rdonlyres/7C0C7DCA-0AB6-4EAE-B6C6-C33A0E03BA52/0/bn2.pdf
42 establishments containing a library	Highland Council Housing and Property data files
There are 93 211 households in highland region and of these just under 10% are vacant or second/holiday homes.	Highland Council Household Estimates (2004) http://www.highland.gov.uk/NR/rdonlyres/ADF1B5B3-1C8D-4C34-97AE-F5B3A35DA583/0/bn3.pdf General registrar for Scotland household Estimates 2006: http://www.gro-scotland.gov.uk/statistics/publications-and-data/household-estimates-statistics/household-estimates-for-scotland-2006/index.html
Number of degraded dwellings in each building condition category: A – Good – Performing well and operating efficiently B – Satisfactory – Performing adequately but showing minor deterioration C – Poor – Showing major defects and / or not operating adequately D – Bad - Life expired and / or serious risk of imminent failure	Highland Council Housing and Property data files
Supply of Affordable housing	Highland Council Affordable housing policy: http://www.highland.gov.uk/NR/rdonlyres/3098EF9A-20A2-46A4-ACD4-B05FEBFCBE0/0/dppgaffordablehousing.pdf
Renewable Energy Installation account for 536.25kW of Highland Council Energy use.	Highland Council Energy Management and Performance Plan.
Number of water treatments works in Highland. Investment in future.	Scottish Water Strategic Asset Capacity and Development Plan (2006); http://www.scottishwater.co.uk/portal/page/portal/SW_PAGE_GROUP_PS_ADMIN/SW_PUB_SCHEME_ADMIN_HOLDING/TAB65572/RELEASED%20STRATEGIC%20CAPACITY%20AND%20DEVELOPMENT%20PLAN%20MARCH%202006%20V2.pdf Scottish Waters Vision for Highlands 2010;

	http://www.scottishwater.co.uk/portal/page/portal/SWE_PGP_INVESTMENT/SWE_PGE_INV_ESTMENT/SWE_INV_HIGH_2010
<p>Waste into landfill: The proportion of waste in Highland being put into landfill. % of recycling/composting.</p> <p>Currently 183 recycling points in Highland.</p> <p>26% of waste in highland recycled.</p> <p>77393 tonnes waste to landfill.</p> <p>Target of 40% recycling rates for 2010.</p>	<p>HC Waste Data Report – http://www.highland.gov.uk/NR/rdonlyres/F6627158-2F0E-4C68-8250-9475DA7B8999/0/20062007AnnualWasteDataReport.pdf</p> <p>SEPA Waste Data Digest Series – http://www.sepa.org.uk/nws/data/data_digest.htm</p> <p>Audit Scotland Annual Statutory Performance Indicators reports – http://www.audit-scotland.gov.uk/performance/council</p> <p>The National Waste Strategy: http://www.sepa.org.uk/NWS/guidance/nwp.htm</p>
Number, type and specification of harbours in Highland.	http://www.highland.gov.uk/yourenvironment/roadsandtransport/harbours/
<p>45% of Highland households are within 3mins. walking distance of a bus stop (Scotland 55%) but with 20% having frequency of services of less than 1 bus per hour (Scotland 4%).</p> <p>12% of the population in Highland had used a train in the past month (Scotland 19%).</p> <p><i>SHS Transport Across Scotland 2005 – 2006.</i></p>	SHS Transport Across Scotland 2005 - 2006
Proportion of population living within 200m of a footpath. The core paths plan is yet to be completed but this information will be added to the baseline data when the plans are adopted, Autumn 2010.	The Highland Councils Core Path Plan.
Number of designated cycle routes in Highland	Sustrans National Cycle Network Map; http://www.sustrans.org.uk/webfiles/general/sustrans_2008_ncn_map.pdf

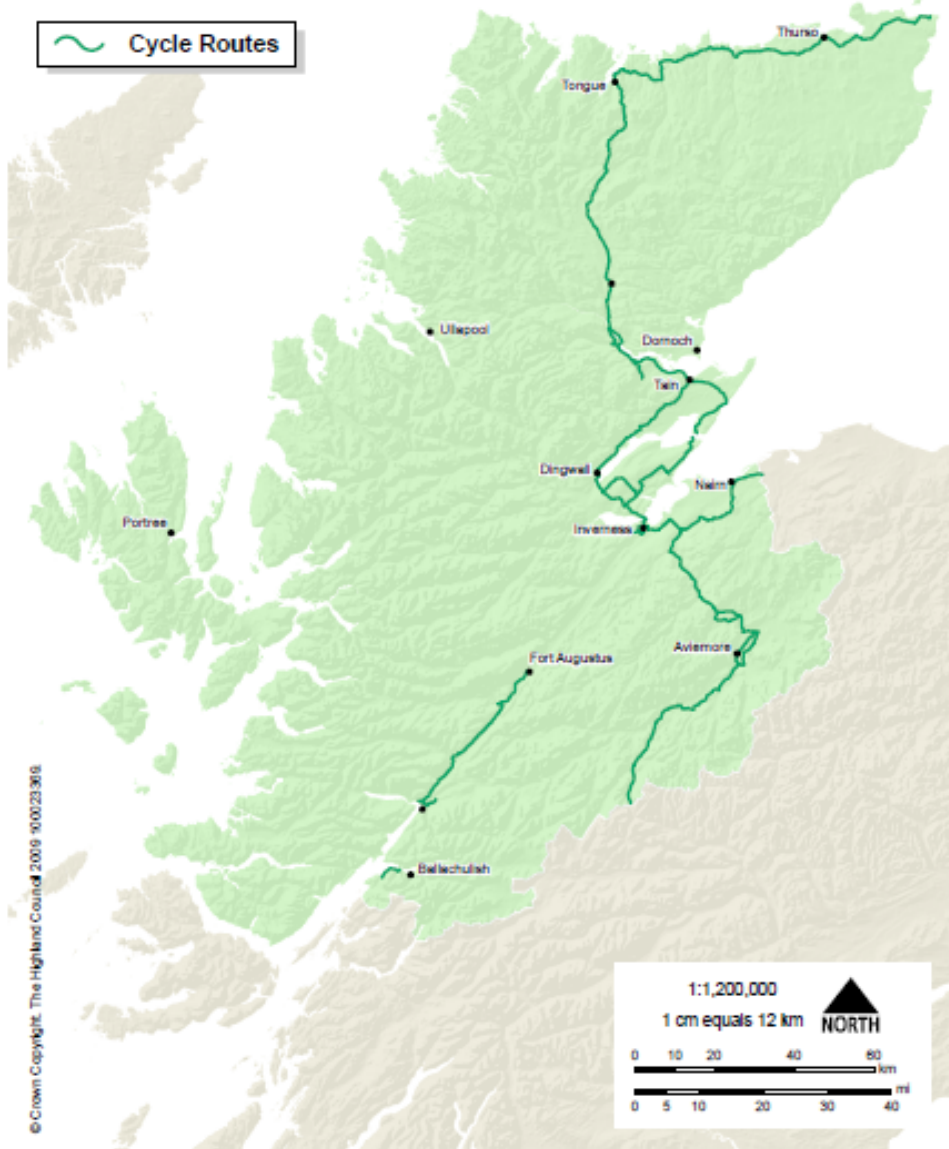
Highland Wide Local Development Plan

Core Paths Network



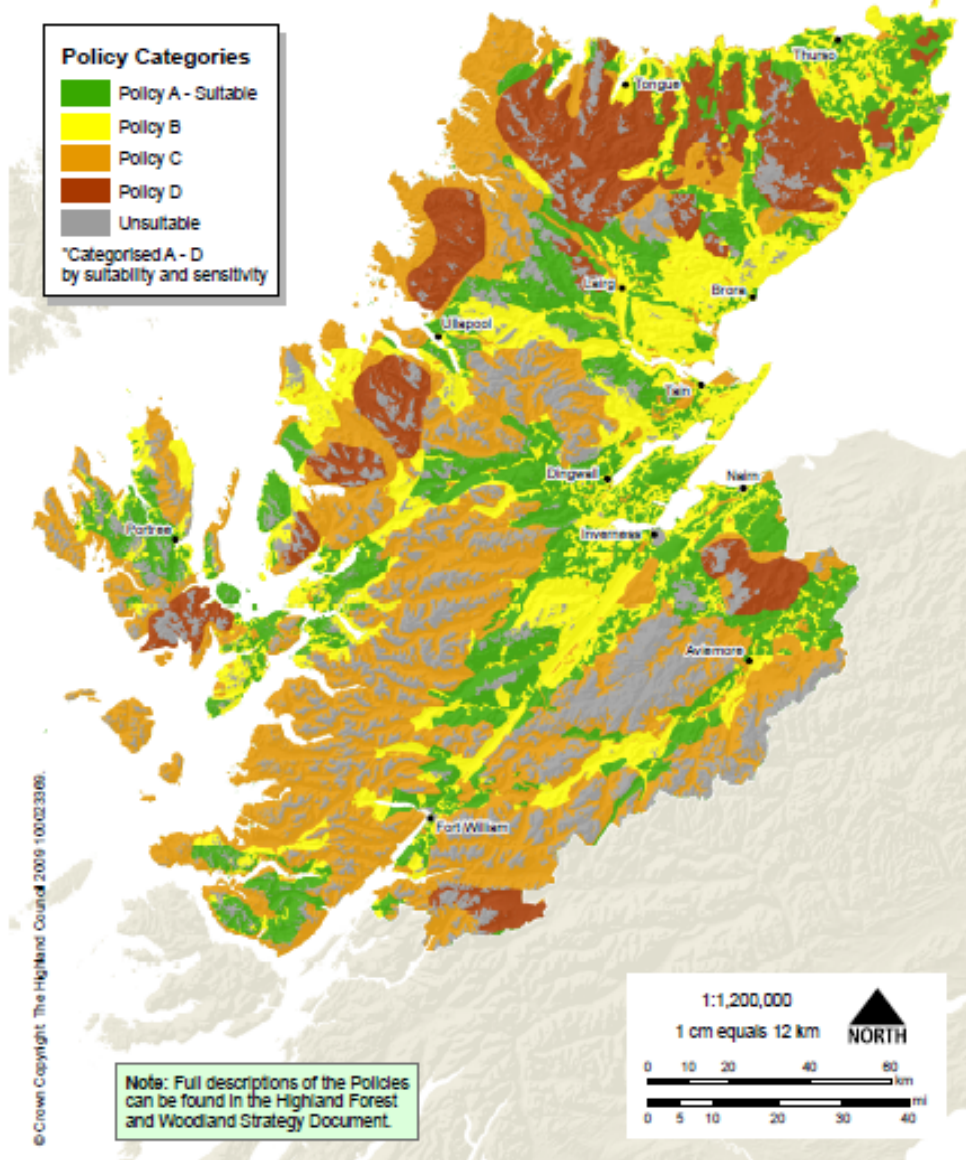
Highland Wide Local Development Plan

Highland Cycle Network

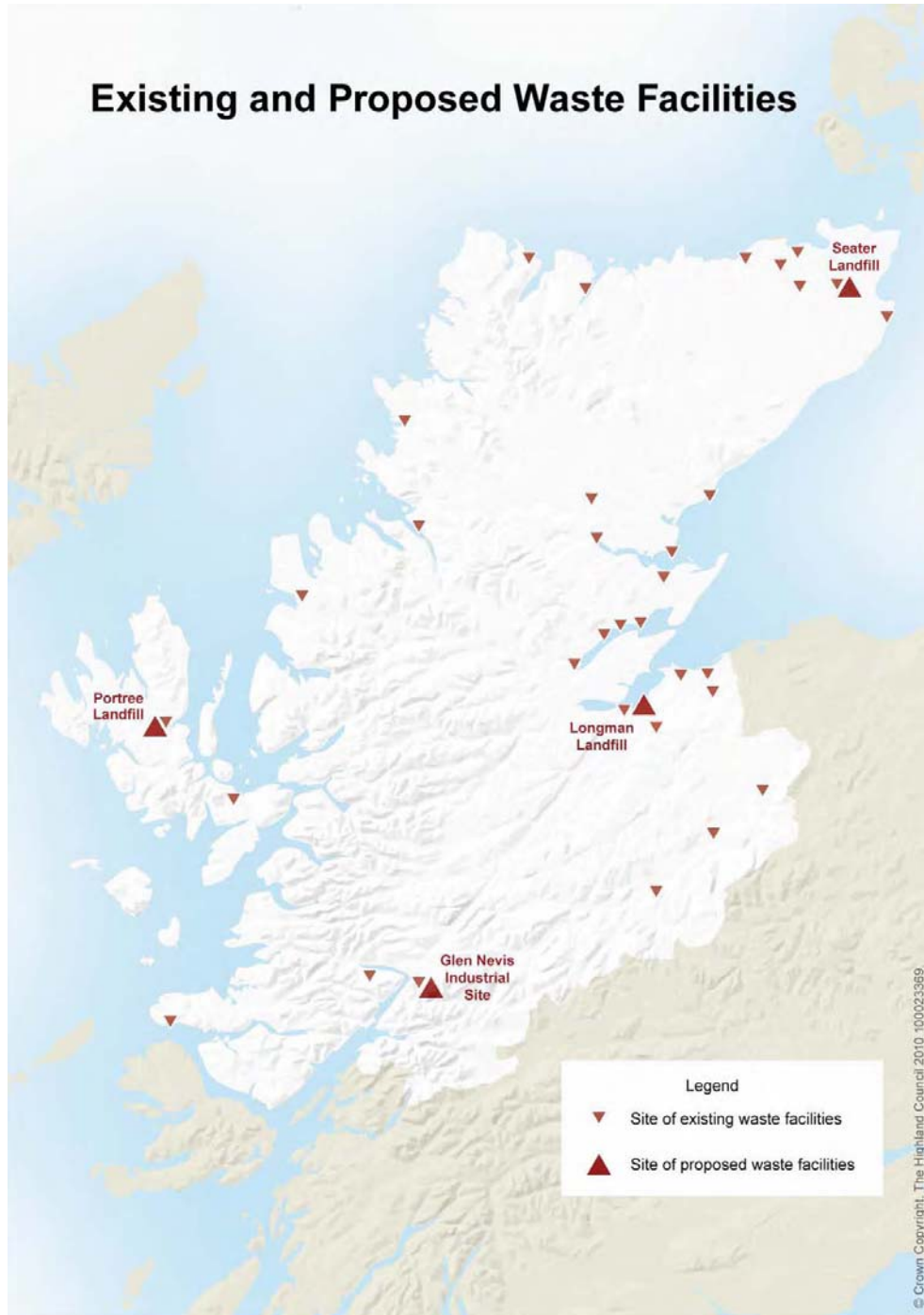


Highland Wide Local Development Plan

Highland Forest and Woodland Strategy

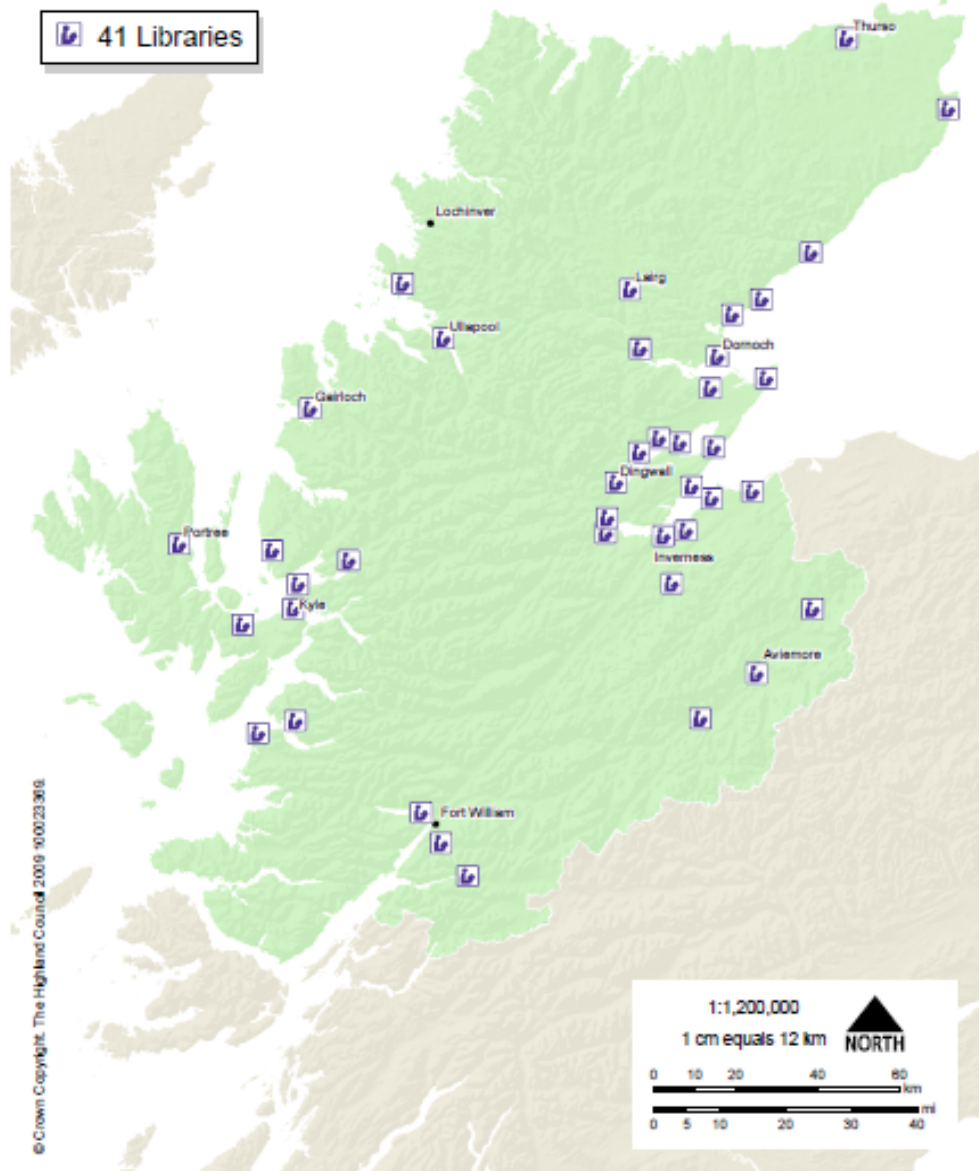


Existing and Proposed Waste Facilities



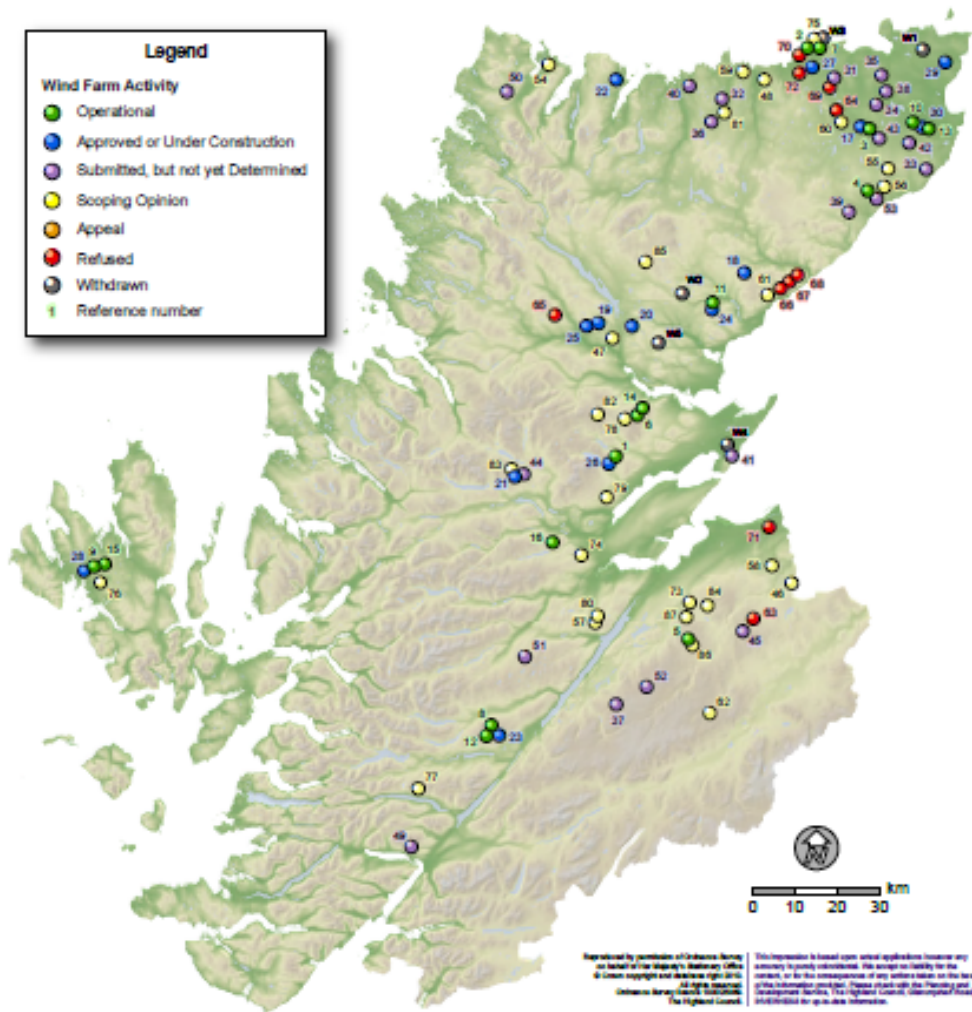
Highland Wide Local Development Plan

Highland Council Libraries



Highland Wind Farm Activity - August 2010

Aithisg Tuath Gaoithe - An Lùnastal 2010

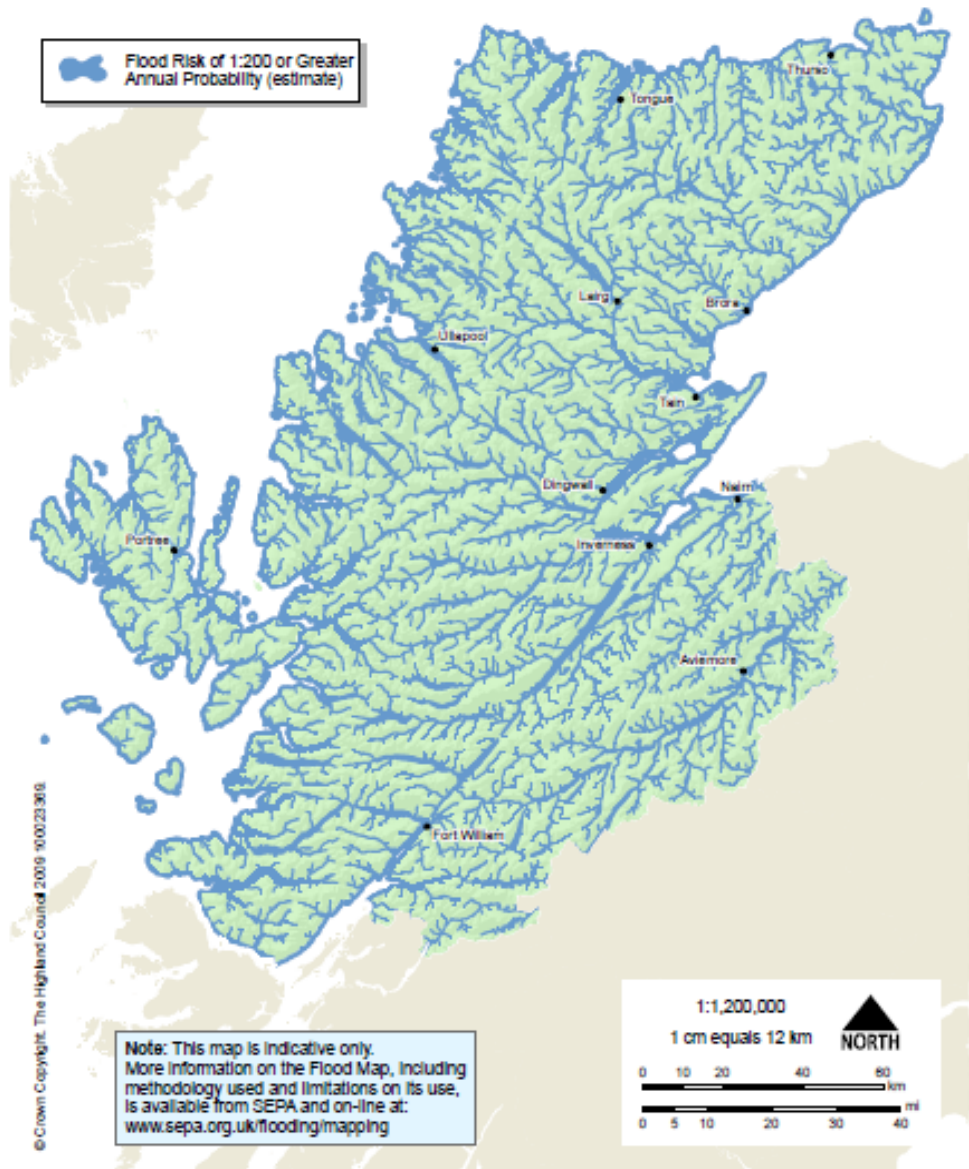


Climatic Factors	
<p>Areas affected by flooding/costs (sea) Areas affected by flooding (river) Priority Species Impact on Natural Resources Impact on Provision of Services/cost to Council</p>	<p>UKCIP09 The climate of the United Kingdom and recent trends. www.ukcip09.org.uk</p> <p>SEPA flood maps www.sepa.org.uk SCCIP pilot project LCLIP. www.sccip.org.uk Marine Climate Change Impacts Partnership.</p>
<p>Highland Council Energy Consumption is 22, 250GWH per annum.</p>	<p>Highland Council Energy Management and Performance Plan http://www.highland.gov.uk/NR/rdonlyres/4EA59619-0EF5-42CC-9889-7EDA9F997E8E/0/emppfeb06.pdf</p>
<p>Carbon Footprint – 11.73-11.99 tonnes CO₂ per capita</p>	<p>Stockholm Environment Institute. <i>Taken from the report “A Right Climate for Change”, (2007) Local Footprints Project and Stockholm Environmental Institute.</i></p> <p>Scottish Climate Change Bill; http://www.scotland.gov.uk/Topics/Environment/Climate-Change/16327/Climate-Change-Bill</p>
<p>Number of AQMA in Highland - None at present</p>	<p>http://www.scottishairquality.co.uk/</p>
<p>Number of employees travelling by car. Availability of video conferencing material. Staff training and awareness Number of School Travel Plans Number of Office Travel plans</p>	<p>This should be monitored through the Highland Council green travel plan which is currently under development,</p> <p>Local Transport Strategy http://www.highland.gov.uk/yourenvironment/roadsandtransport/transportplanning/localtransportstrategy.htm</p>
<p>Number of staff choosing public transport for commuting and business travel. Staff training and awareness. Number of School Travel plans Number of Office Travel Plans</p>	<p>This should be monitored through the Highland Council green travel plan which is currently under development. Information from other organisations will be collated in time.</p> <p>Local Transport Strategy http://www.highland.gov.uk/yourenvironment/roadsandtransport/transportplanning/localtransportstrategy.htm</p>
<p>Renewable Energy installations in Highland Council Building is 1200KWh</p> <p>Promotion of renewable energy.</p>	<p>Highland Council Energy Management and Performance Plan http://www.highland.gov.uk/NR/rdonlyres/4EA59619-0EF5-42CC-9889-7EDA9F997E8E/0/emppfeb06.pdf</p> <p>Highland Council Renewable Energy Strategy http://www.highland.gov.uk/yourenvironment/planning/energyplanning/renewbleenergy/highland</p>

	drenuableenergystrategy.htm Community Benefits from Renewables http://www.highland.gov.uk/livinghere/communityplanning/communitybenefit/
Promotion of Sustainable design in the Community.	Designing for Sustainability in the Highlands http://www.highland.gov.uk/yourenvironment/planning/developmentplans/developmentplanpolicyguidance/designingforsustainability.htm Scotland's Housing Expo 2010: http://www.highland.gov.uk/yourenvironment/sustainabledevelopment/sharingthegreenagenda/highlandhousingfair.htm
Adaptation or otherwise of habitats or species to climate factors.	Modelling Natural Resource Response to Climate Change (MONARCH) http://www.ukcip.org.uk/index.php?option=com_content&task=view&id=331
Frequency of landslides in Highland	TEC Services Records

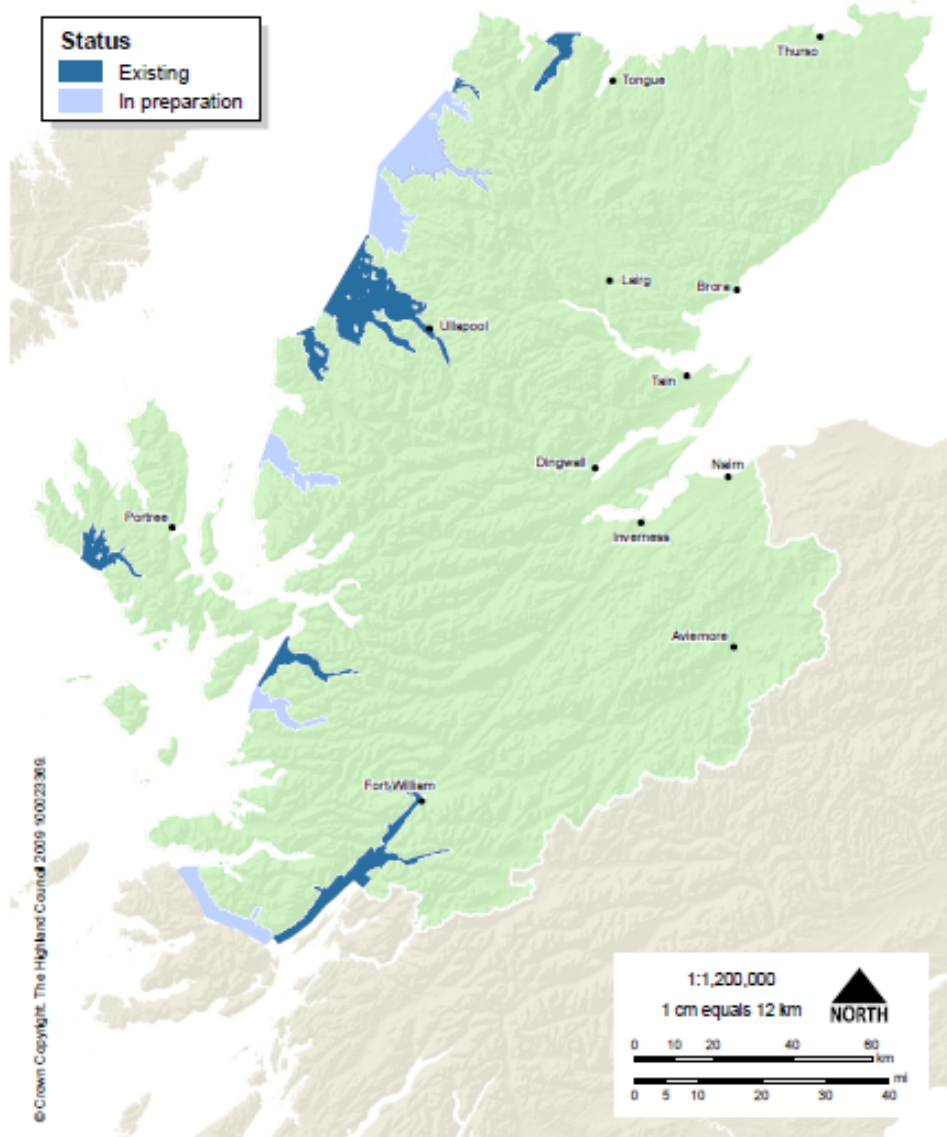
Highland Wide Local Development Plan

Highland Flood Risk



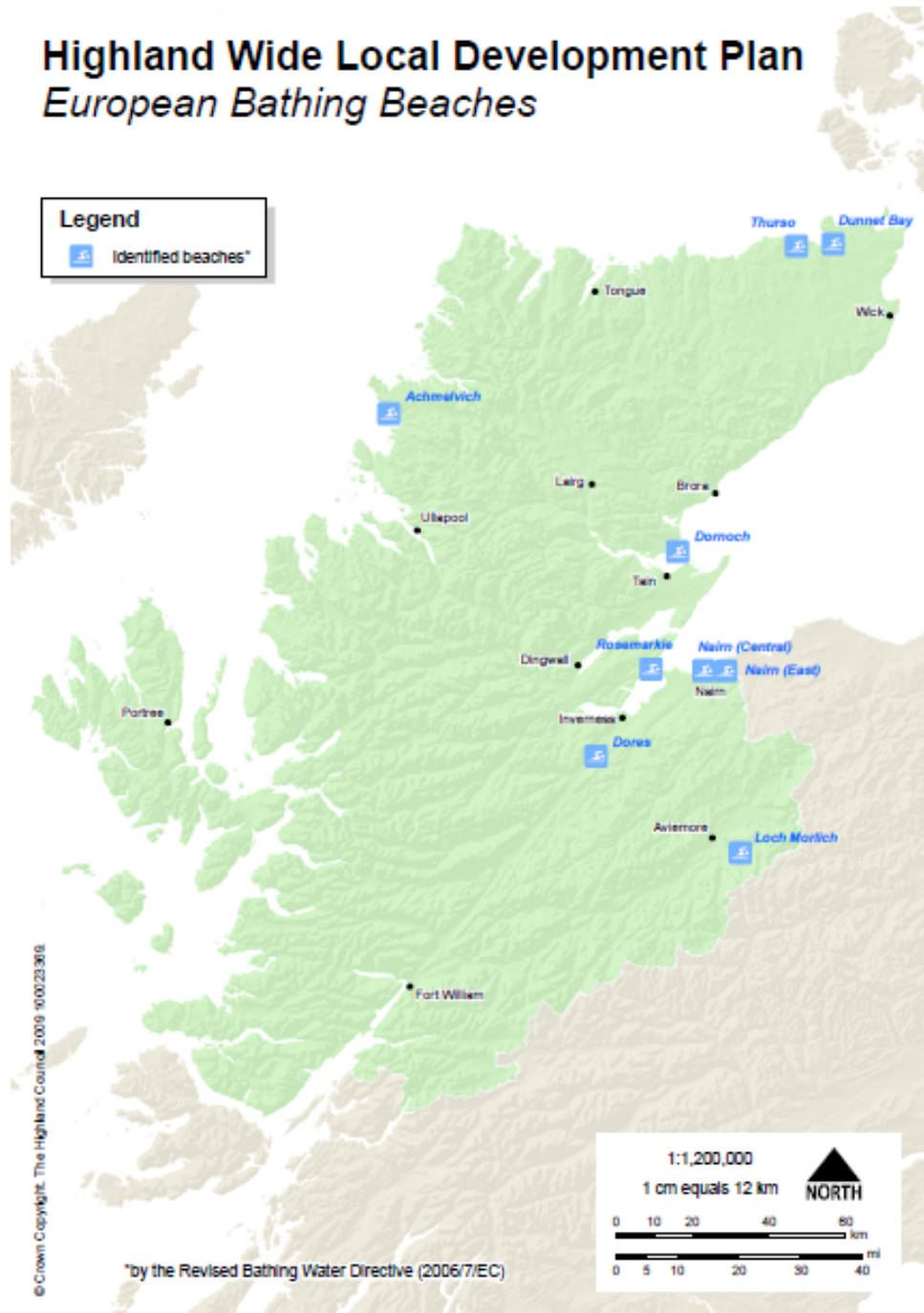
Water	
Number of rivers/lochs in good Ecological Condition.	<p>EU Water Framework Directive. Highland Biodiversity Action plan SEPA Scottish Water SEPA Water Quality Classifications: http://www.sepa.org.uk/pdf/data/classification/water_qual_class_2006.pdf</p> <p>Scottish Executives Bathing Water Strategy: http://www.scotland.gov.uk/Publications/2006/03/23151924/0</p> <p>Scottish Executives Statistics Environment:</p> <p>European Directive 76/160/EEC, which sets mandatory bacteriological and other health-related standards for bathing waters in Europe. Biodiversity</p>
Vulnerability of Highlands communities to flooding.	<p>Scottish Government: the Future of Flood risk Management in Scotland: http://www.scotland.gov.uk/Topics/Environment/Water/Flooding/Consultation</p> <p>UKCIP08: www.ukcip08.org.uk</p>
Existing flood defences	<p>Office of Science and technology (2005) Foresight report: <i>Future Flooding Scotland</i>. http://www.foresight.gov.uk/Previous_Projects/Flood_and_Coastal_Defence/Reports_and_Publications/Scotland/final_scotland.pdf</p>
Pumping Stations and Sewage Works	<p>Scottish Water (2006) Strategic Asset Capacity and Development Plan; http://www.scottishwater.co.uk/portal/page/portal/SW_PAGE_GROUP_PS_ADMIN/SW_PUB_SCHEME_ADMIN_HOLDING/TAB65572/RELEASED%20STRATEGIC%20CAPACITY%20AND%20DEVELOPMENT%20PLAN%20MARCH%202006%20V2.pdf</p>
80 Hydro-powered stations in Highlands and islands	http://www.hi-energy.org.uk/hydroenergy.html
Ground water and river levels	<p>Centre for Hydrology and Ecology. National Water Archive; http://www.ceh.ac.uk/data/NWA.htm</p>
Areas of Cumulative Drainage Impact	SEPA GIS Dataset
Areas of Shellfish harvesting and shellfish production	SEPA GIS Dataset

Highland Wide Local Development Plan *Aquaculture Framework Plans*



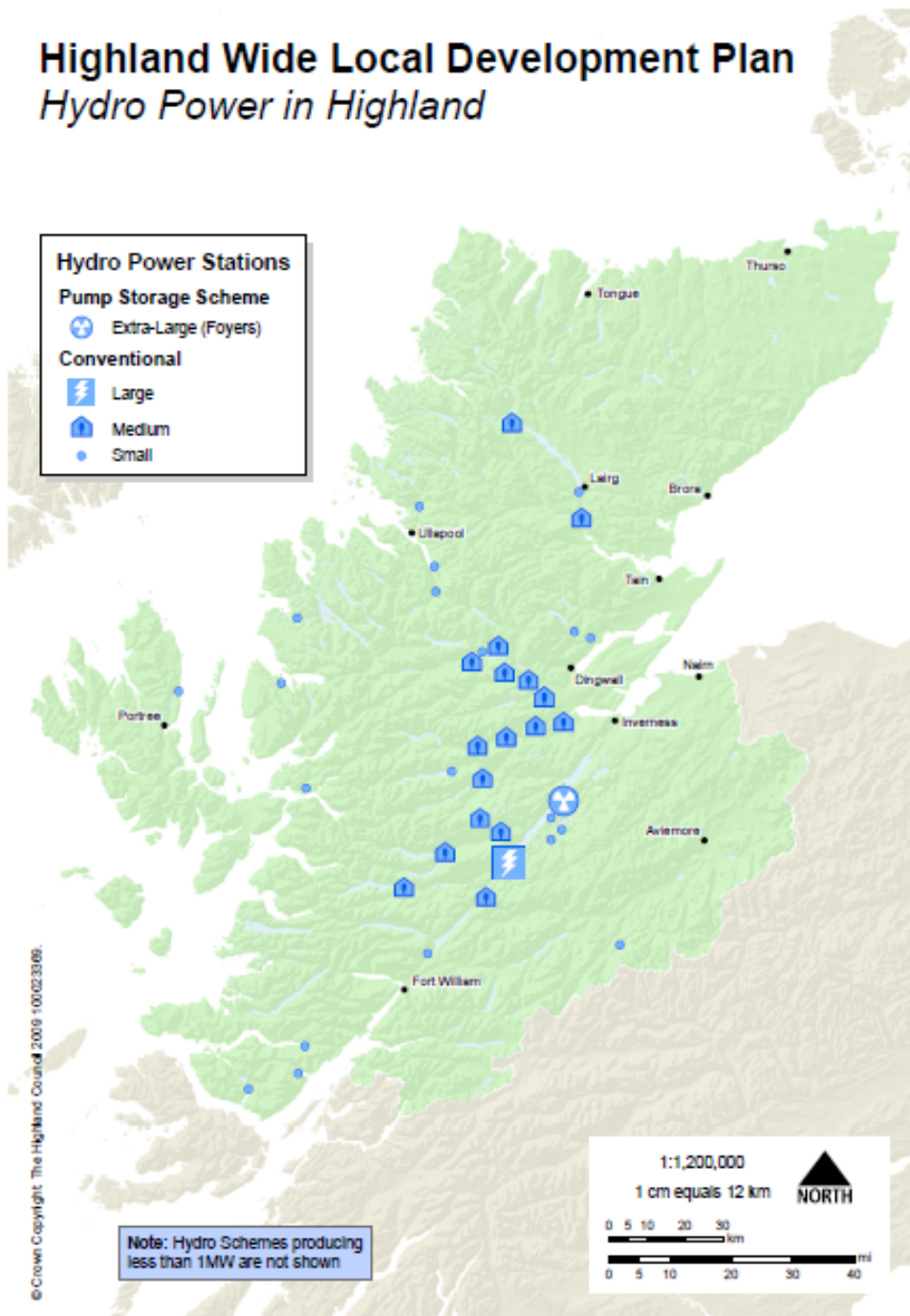
Highland Wide Local Development Plan

European Bathing Beaches

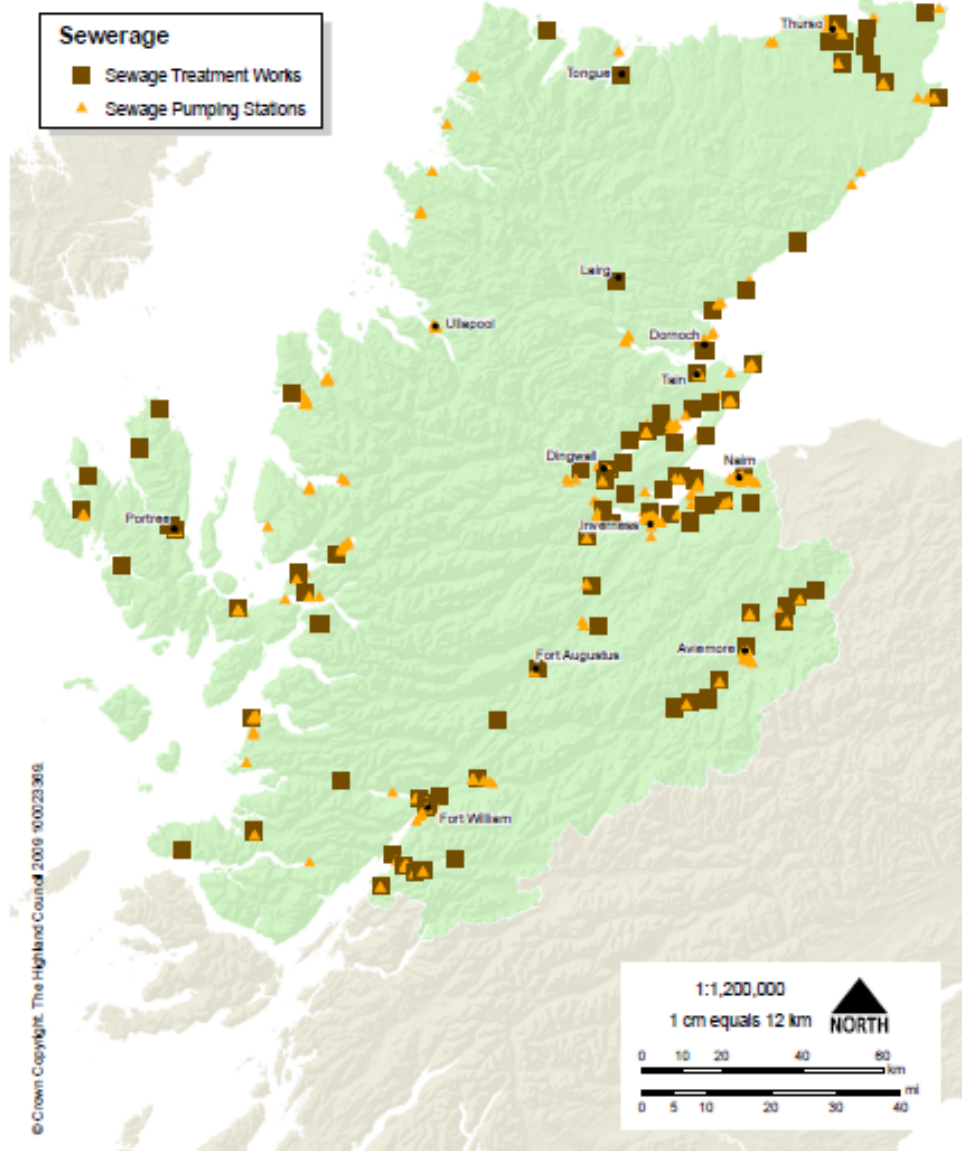


Highland Wide Local Development Plan

Hydro Power in Highland



Highland Wide Local Development Plan *Sewage Treatment*

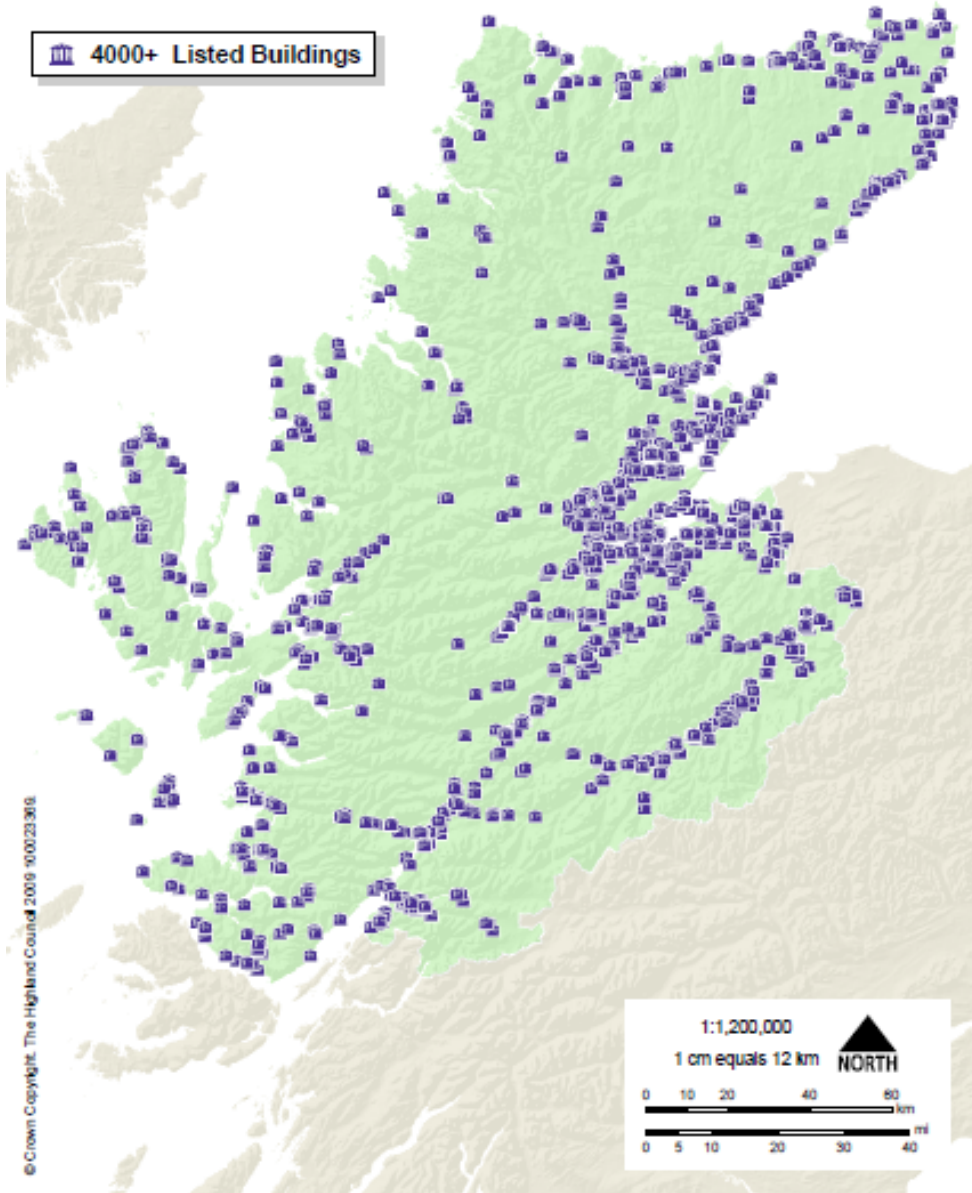


Soil	
Change in amount of prime agricultural land and prime croft land	Macaulay Institute Crofters Commission Annual report 2006/07; http://www.crofterscommission.org.uk/documents/croft-englishfinalreport0607.pdf
Distance and numbers of path where erosion or poor path construction has or is reducing soil quality and quantity. No data available but possible monitoring of core paths in the future can be used.	The Highland Council Core Paths Plan (to be adopted in summer 2008)
Number of sites of Contaminated land in Highland Area of Contaminated Land (ha) in Highland	Highland Council Contaminated Land Database.
Number of notified and unnotified GRC and RIGS Sites in Highland	http://www.jncc.gov.uk/page-2949
Area of peatland in Highland	Macaulay Institute

Cultural Heritage	
Value and protect diversity and local distinctiveness.	<p>A96 Development Framework: http://www.highland.gov.uk/NR/rdonlyres/7297B608-64F3-478C-AC10-4CEABF3595C1/0/A96DevelopmentFramework.pdf</p> <p>Inverness City Vision: http://www.highland.gov.uk/NR/rdonlyres/6E3C5D49-3E28-49D9-AC41-711ADDABA265/0/InvernessCityVision.pdf</p>
Number of listed buildings A Listed - 186 B Listed - 1667 C(S) Listed – 1161	Historic Scotland GIS Dataset
Total Number of Schedule Monuments in Highland is 1237	Historic Scotland GIS Dataset
Total Number of Inventory Gardens and Designed Landscapes – 52	Historic Scotland GIS Dataset
Unscheduled archaeology sites	Highland Historic Environment Record http://her.highland.gov.uk

Highland Wide Local Development Plan

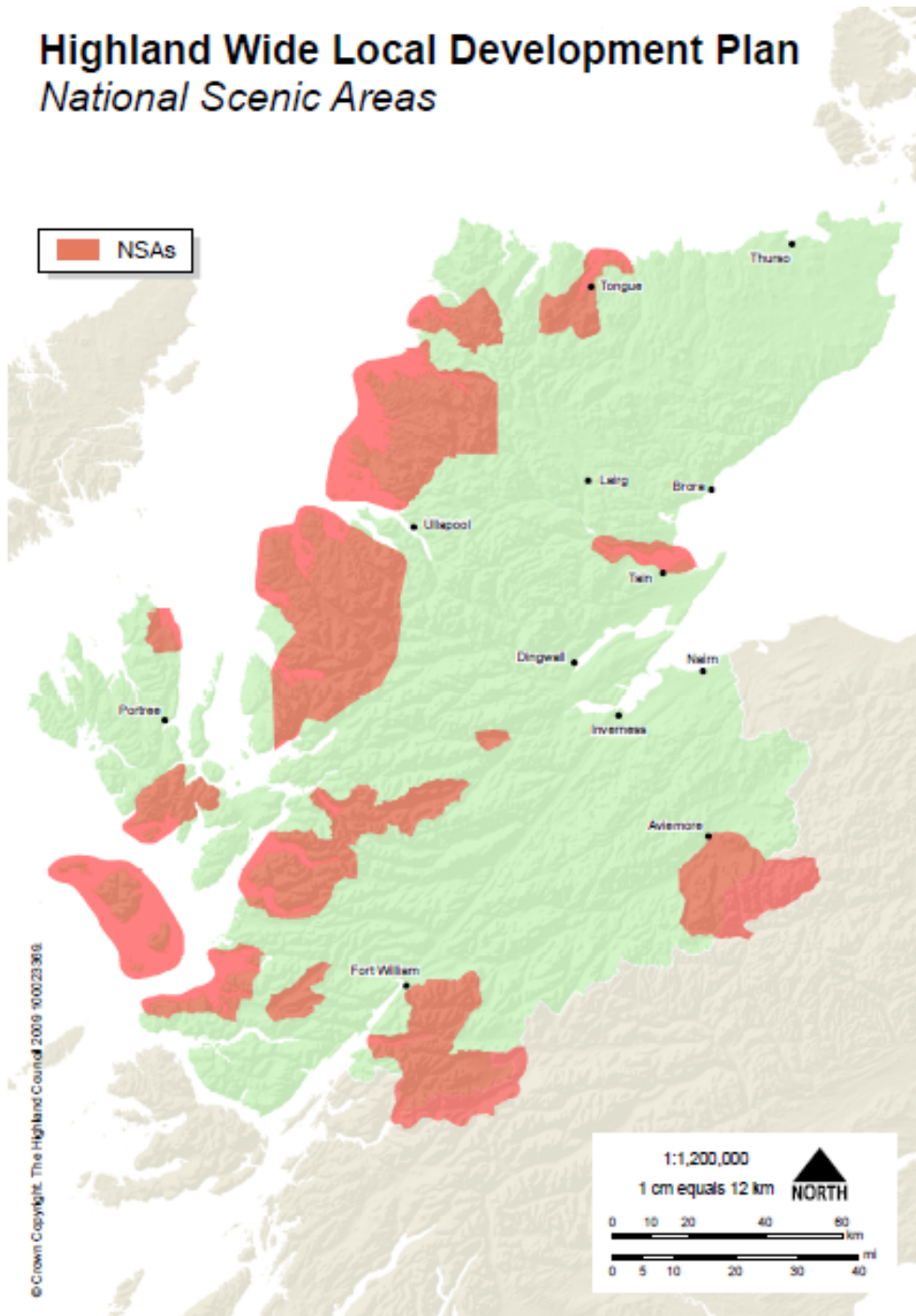
Listed Buildings

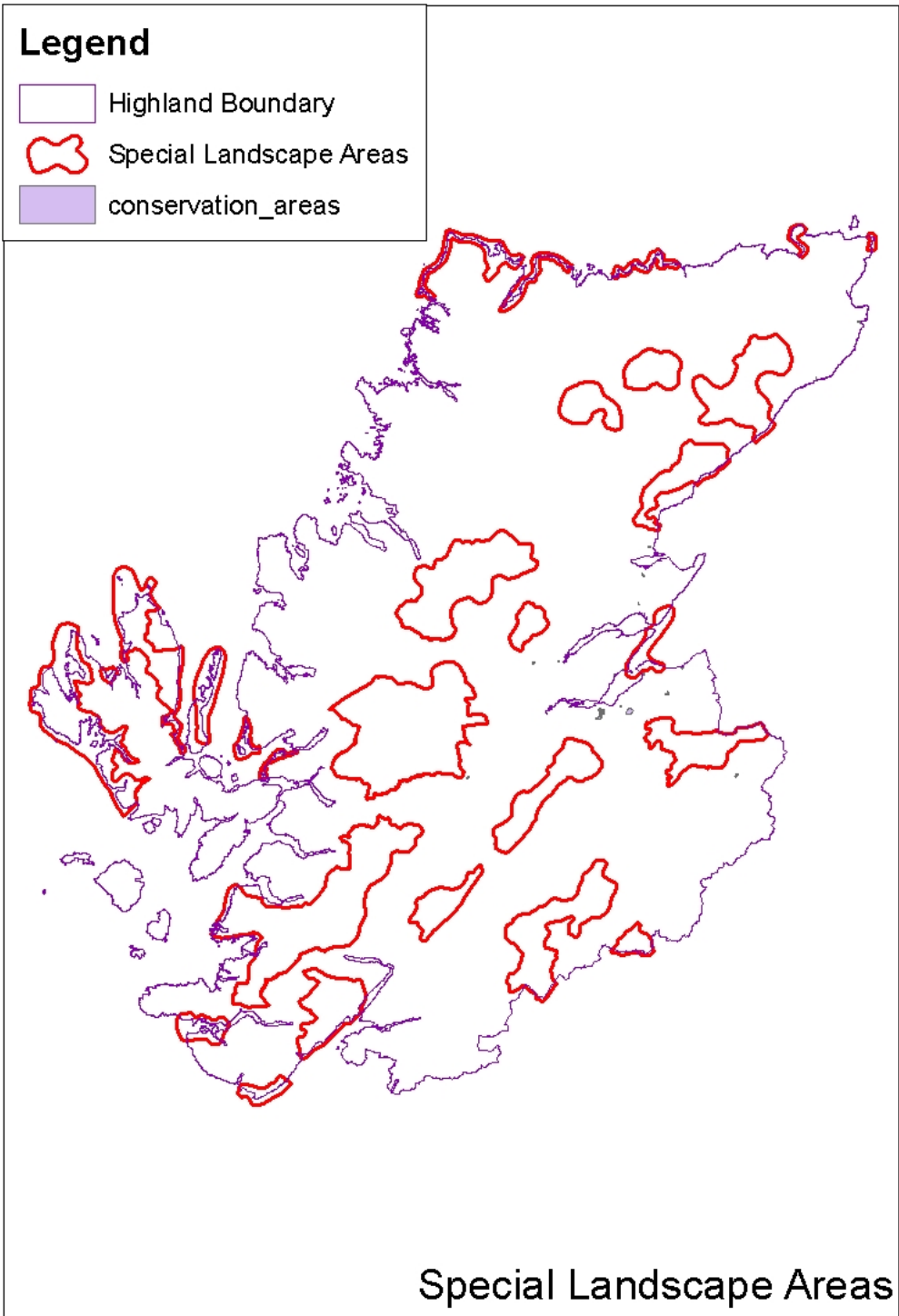


Landscape	
Significant changes to Landscape Character	<p>Scottish Natural Heritage: <u><i>Overview of Scotland's national programme of Landscape Character Assessment (2004)</i></u></p> <p>Scottish Natural Heritage (1996) <i>Cairngorms landscape assessment.</i></p> <p>Scottish Natural Heritage (1998) <u><i>Inner Moray Firth Landscape Character Assessment.</i></u></p> <p>Scottish Natural Heritage (1999) <u><i>Ben Alder, Ardverikie and Creag Meagaidh Landscape Character Assessment</i></u></p> <p>Scottish Natural Heritage (1998) <u><i>Inverness District Landscape Character Assessment</i></u></p> <p>Scottish Natural Heritage (1998) <u><i>Moray and Nairn Landscape Character Assessment</i></u></p> <p>Scottish Natural Heritage (1998) <i>Caithness and Sutherland Landscape Character Assessment.</i></p> <p>Scottish Natural Heritage (1996) <i>Skye and Lochalsh Landscape Character Assessment.</i></p> <p>Scottish Natural Heritage (1998) <i>Lochaber Landscape Character Assessment.</i></p> <p>Scottish Natural Heritage (1999) <i>Ross and Cromarty Landscape Character Assessment.</i></p>
Significant changes in Special Landscape Areas	<p>Special Landscape Area Citations. http://www.highland.gov.uk/NR/rdonlyres/A91EA583-83CF-4699-B7AD-072263B9A3F7/0/Item12SpecialLandscapeAreasCitations.pdf</p>
Broad areas of search for wild land	<p>Map 3 in SNH's Policy Statement, Wildness in Scotland's Countryside http://www.snh.gov.uk/docs/A150658.pdf</p>

Highland Wide Local Development Plan

National Scenic Areas

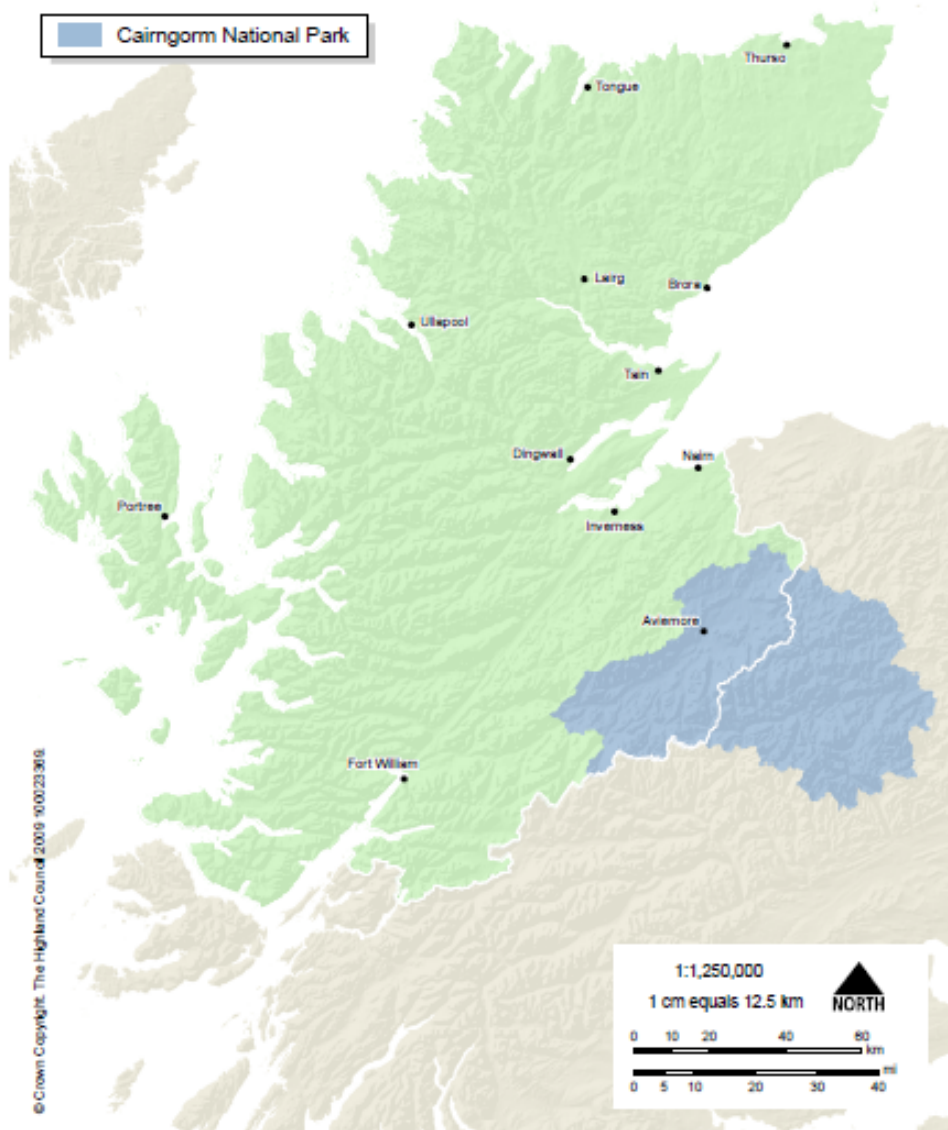




Biodiversity, Flora and Fauna	
There are currently 12 RAMSAR sites, 90 SAC's, 46 SPA's, 368 SSSI's, 12 NNR's, 1 LNR.	www.snh.org.uk http://www.nbn.org.uk
Protected Species in Highland	SNH Site Condition Monitoring Database
Highland region supports 192 of the 238 priority species in Scotland and 40 of the 42 priority habitats. 455 of the priority species of conservation importance are found in Highland.	Highland Biodiversity Action Plan www.highlandbiodiversity.com Habitat and Birds Directive – Annex 1 http://www.nbn.org.uk Protected Species Surveys submitted with planning applications.
Natural Resources of the Seas around Highland.	http://www.highland.gov.uk/yourenvironment/agriculturefisheriesandforestry/fisheriesandaquaculture/
Coverage of Forest and Woodland	The Highland Forest and Woodland strategy. http://www.highland.gov.uk/yourenvironment/agriculturefisheriesandforestry/treesandforestry/highland-forest-and-woodland-strategy.htm Forestry Commission Scotland; http://www.forestry.gov.uk/scotland
Biodiversity of coastal areas	Highland Biodiversity Action Plan www.highland.gov.uk

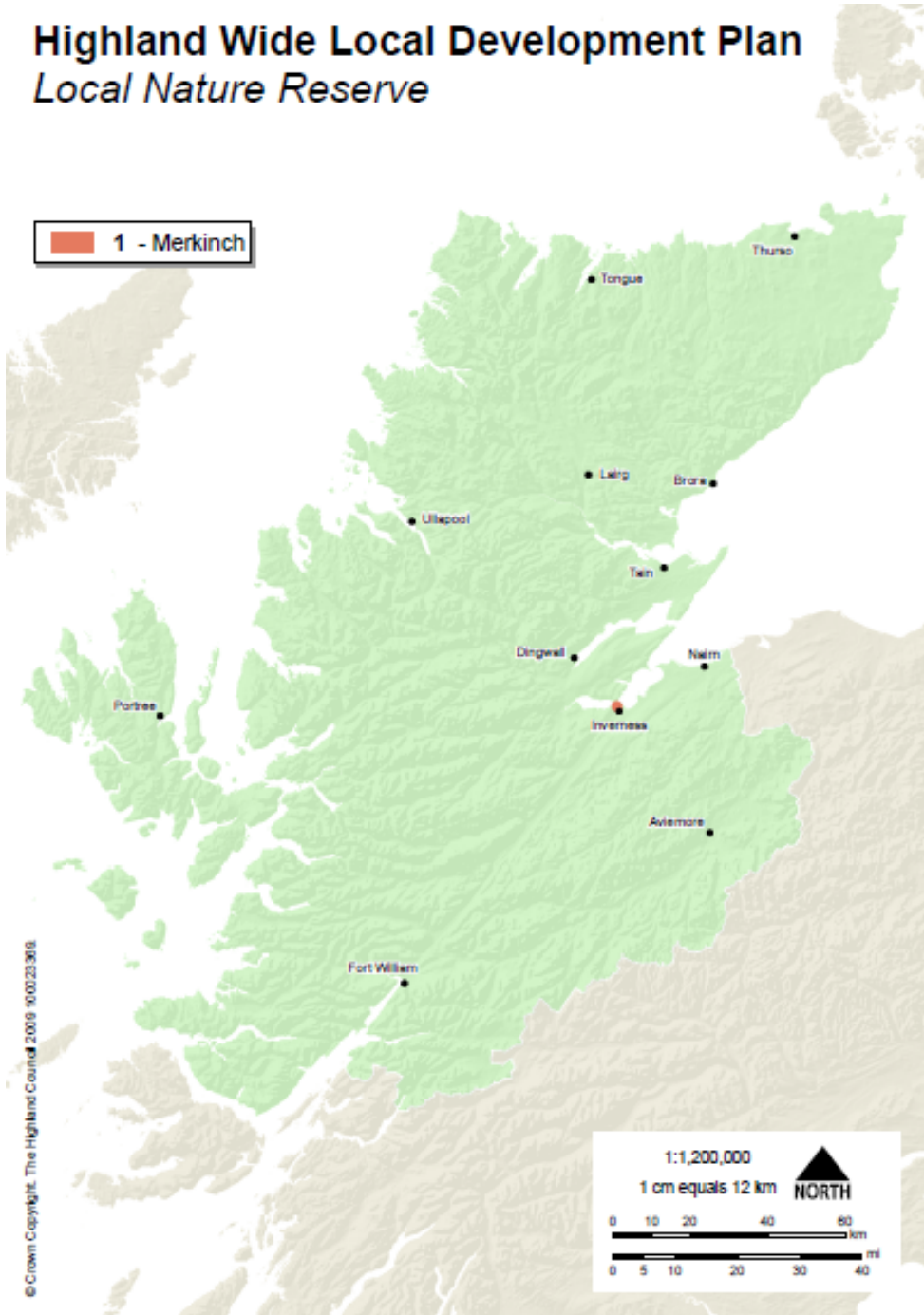
Highland Wide Local Development Plan

Cairngorm National Park



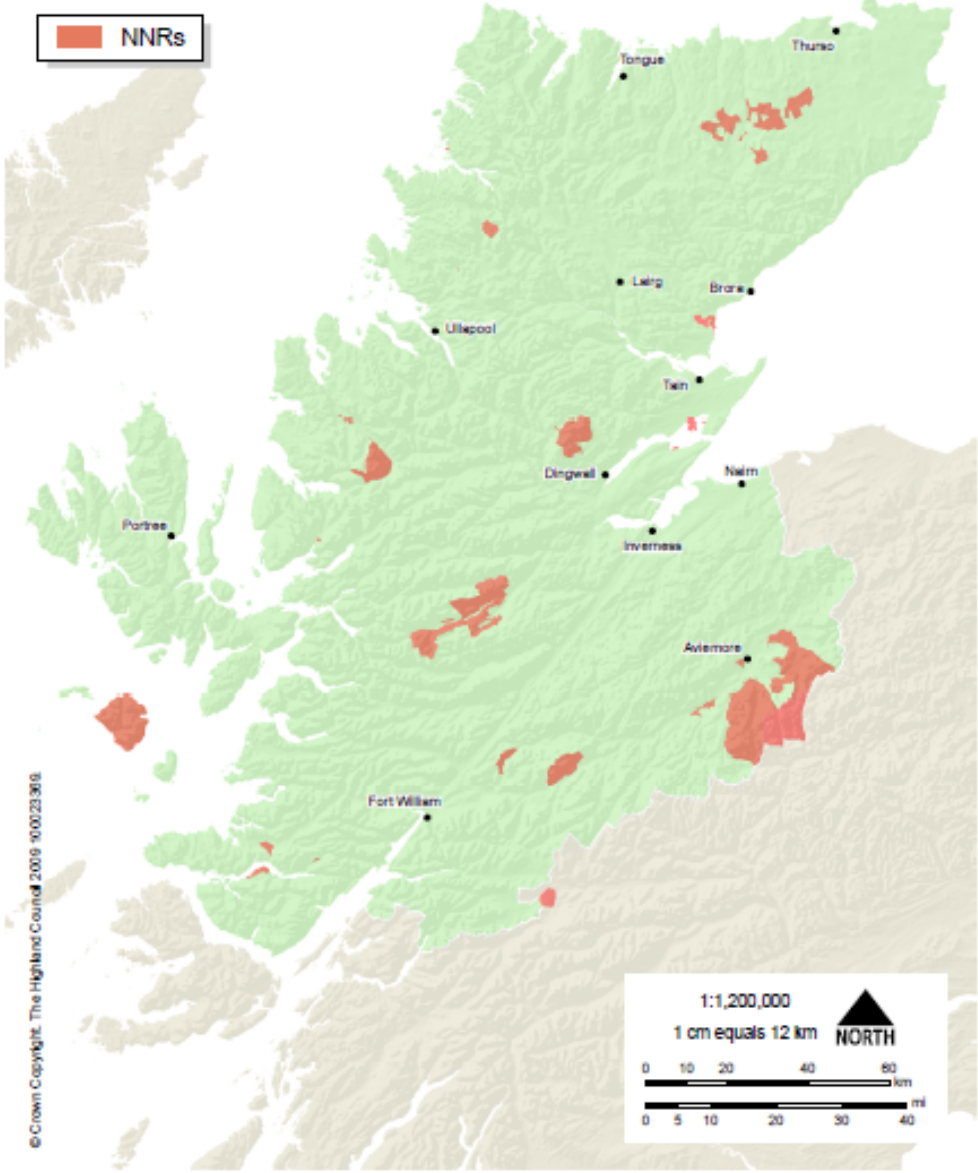
Highland Wide Local Development Plan

Local Nature Reserve



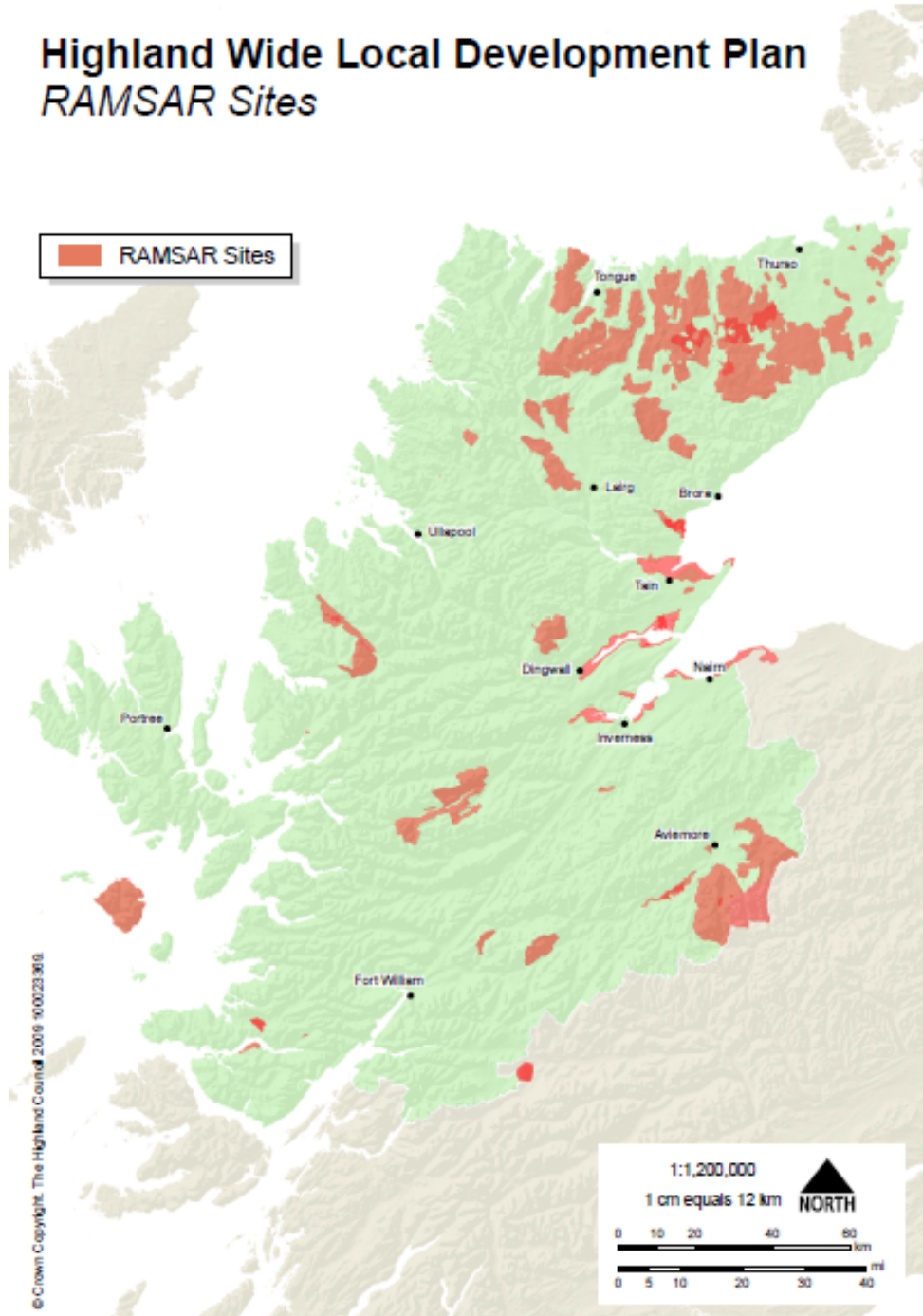
Highland Wide Local Development Plan

National Nature Reserves



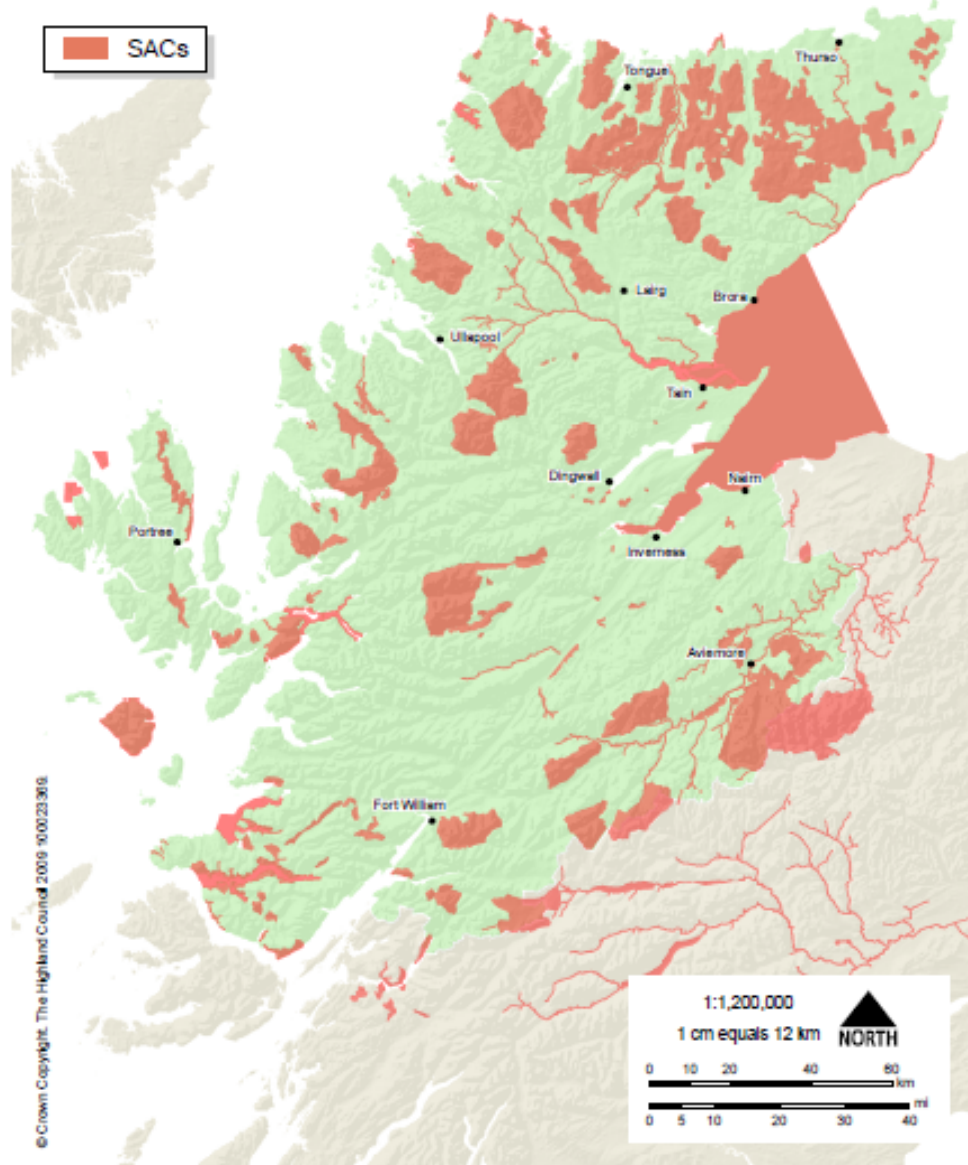
Highland Wide Local Development Plan

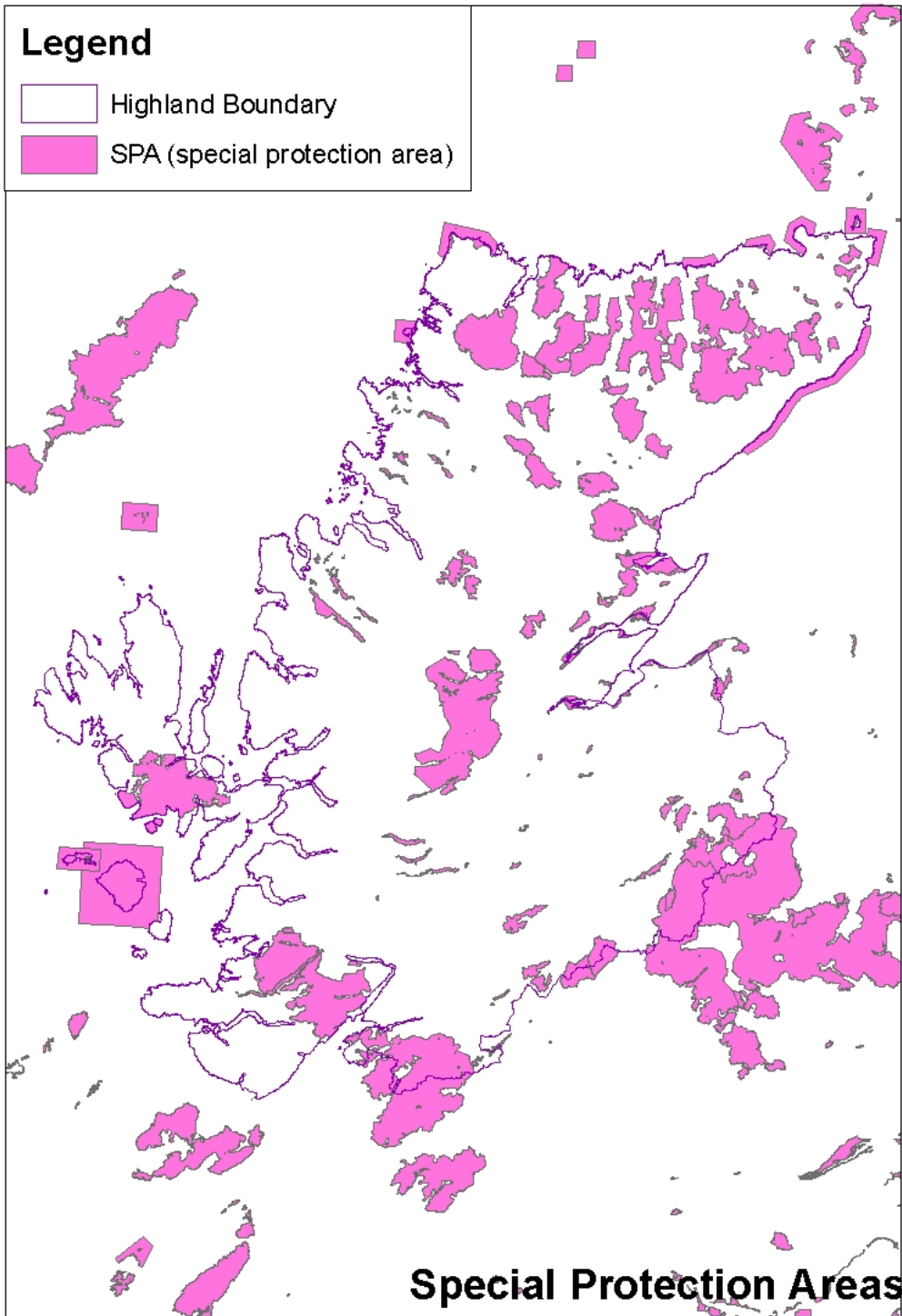
RAMSAR Sites



Highland Wide Local Development Plan

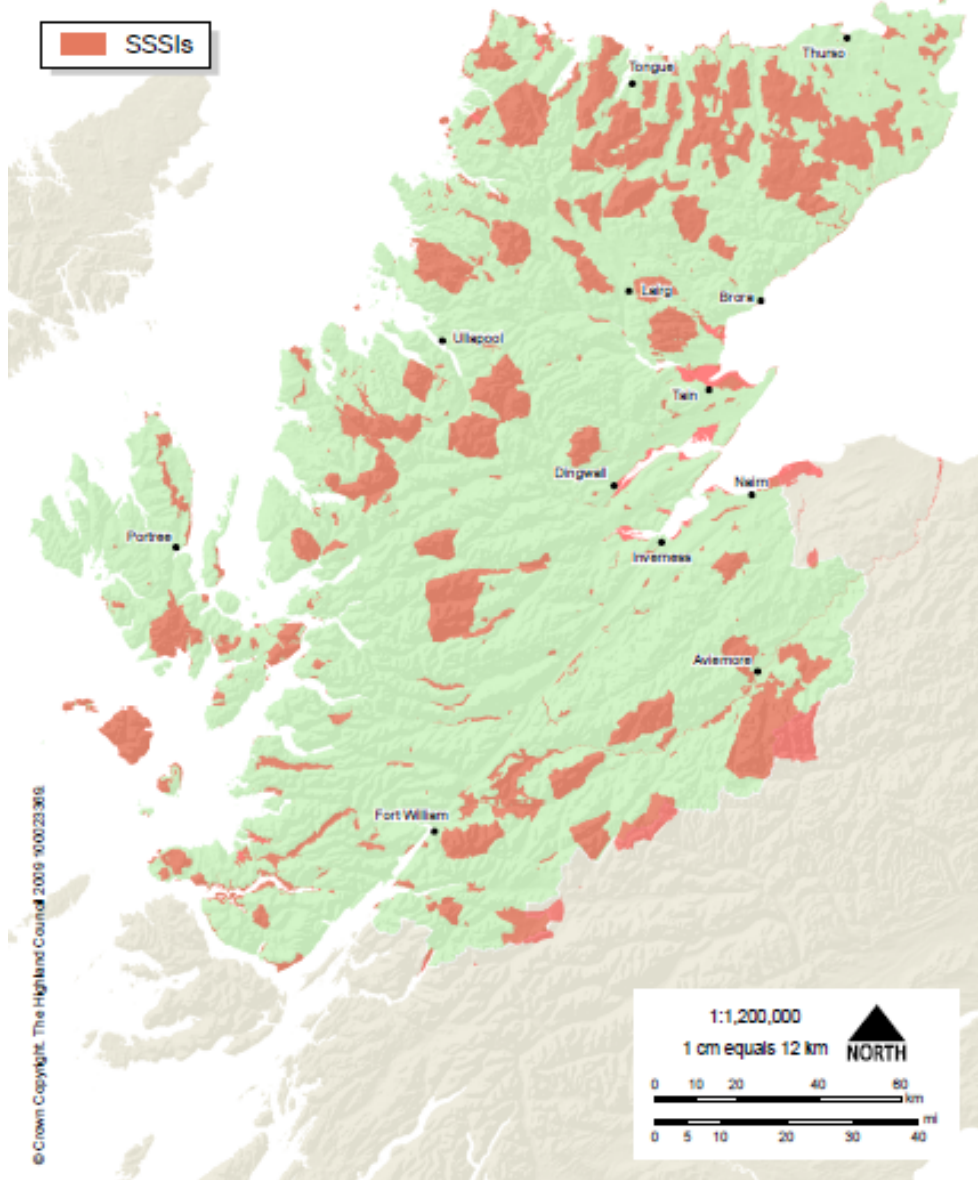
Special Areas of Conservation





Highland Wide Local Development Plan

Sites of Special Scientific Interest



Ancient and Long Established Woodland

