



OPERATION	DESCRIPTION
OP 20	126m OR THEREBY OF FLOOD WALL AND 2.5m WIDE SHARED FOOT PATH/ CYCLEWAY.
OP 21	SURFACE WATER DRAINAGE SYSTEM TO MITIGATE EFFECTS OF SECONDARY FLOODING
OP 22	120m OR THEREBY OF FLOOD WALL AND 2.5m WIDE SHARED FOOT PATH/ CYCLEWAY ALONG KILMALLIE ROAD TO TIE IN WITH ACCESS RAMP ON SOLDIERS BRIDGE.

- General Notes**
- All dimensions shown are in metres unless otherwise stated and levels in metres to Ordnance Datum.
 - Do not scale from this drawing.
 - This drawing is to be read in conjunction with:
 - 2013s7413-JBAU-00-00-DR-C-1001 - Chainage 0 to 2179.36m
 - 2013s7413-JBAU-00-00-DR-C-1002 - Chainage 0 to 76.80m
 - 2013s7413-JBAU-00-00-DR-C-1003 - Chainage 76.80 to 216.60m
 - 2013s7413-JBAU-00-00-DR-C-1004 - Chainage 216.60 to 334.41m
 - 2013s7413-JBAU-00-00-DR-C-1005 - Chainage 334.41 to 471.90m
 - 2013s7413-JBAU-00-00-DR-C-1006 - Chainage 471.90 to 595.52m
 - 2013s7413-JBAU-00-00-DR-C-1007 - Chainage 595.52 to 720.51m
 - 2013s7413-JBAU-00-00-DR-C-1008 - Chainage 720.51 to 842.19m
 - 2013s7413-JBAU-00-00-DR-C-1009 - Chainage 842.19 to 942.70m
 - 2013s7413-JBAU-00-00-DR-C-1010 - Chainage 942.70 to 1091.89m
 - 2013s7413-JBAU-00-00-DR-C-1011 - Chainage 1091.89 to 1209.17m
 - 2013s7413-JBAU-00-00-DR-C-1012 - Chainage 1209.17 to 1335.97m
 - 2013s7413-JBAU-00-00-DR-C-1013 - Chainage 1335.97 to 1474.34m
 - 2013s7413-JBAU-00-00-DR-C-1014 - Chainage 1474.34 to 1589.43m
 - 2013s7413-JBAU-00-00-DR-C-1015 - Chainage 1589.43 to 1697.69m
 - 2013s7413-JBAU-00-00-DR-C-1016 - Chainage 1697.69 to 1824.43m
 - 2013s7413-JBAU-00-00-DR-C-1017 - Chainage 1824.43 to 1952.82m
 - 2013s7413-JBAU-00-00-DR-C-1019 - Chainage 2080.00 to 2179.36m

- 2013s7413-JBAU-00-00-DR-C-3001 - Glenkie Street Secondary Flooding Pumping Station - Plan and Schematic Long-Section
- 2013s7413-JBAU-00-00-DR-C-3002 - Erracht Terrace Secondary Flooding Pumping Station - Plan and Schematic Long-Section
- 2013s7413-JBAU-00-00-DR-C-3003 - Kilmallie Road Secondary Flooding Pumping Station - Plan and Schematic Long-Section
- These plans are in accordance with the requirements of Section 60 and Schedule 2 of the Flood Risk Management (Scotland) Act 2009.
- The location, horizontal and vertical extents of the operations may vary by those limits (where applied) as noted in the Description of the Flood Protection Scheme.
- The locations of any known services shown on drawing are approximate and for guidance only.
- Diversion of any statutory undertaker apparatus will be carried out by or on behalf of the statutory undertaker under its own statutory powers.

Rev.:	Date	Drawn	S.B.	Designed	S.B.	Checked	I.F.	Approved	R.D.
2									
1									

Client Approval

A - Approved
B - Approved with Revisions
C - Do Not Use

Purpose of Issue: For Consultation Status: S4

JBA consulting

Unit 2.1
Quantum Court
Research Avenue South
Heriot Watt University
Edinburgh
EH14 4AP
United Kingdom
www.jbaconsulting.com
+44 (0)131 3192940
+44 (0)845 8627772
info@jbaconsulting.com

Project **Caol & Lochyside Flood Protection Scheme**

Title **Scheme Layout Plan**
Chainage 1952.82 to 2080.00m

Client **The Highland Council**
Comhairle na Gàidhealtachd

Scale: 1:200 @ A1

Project Number: 2013s7413

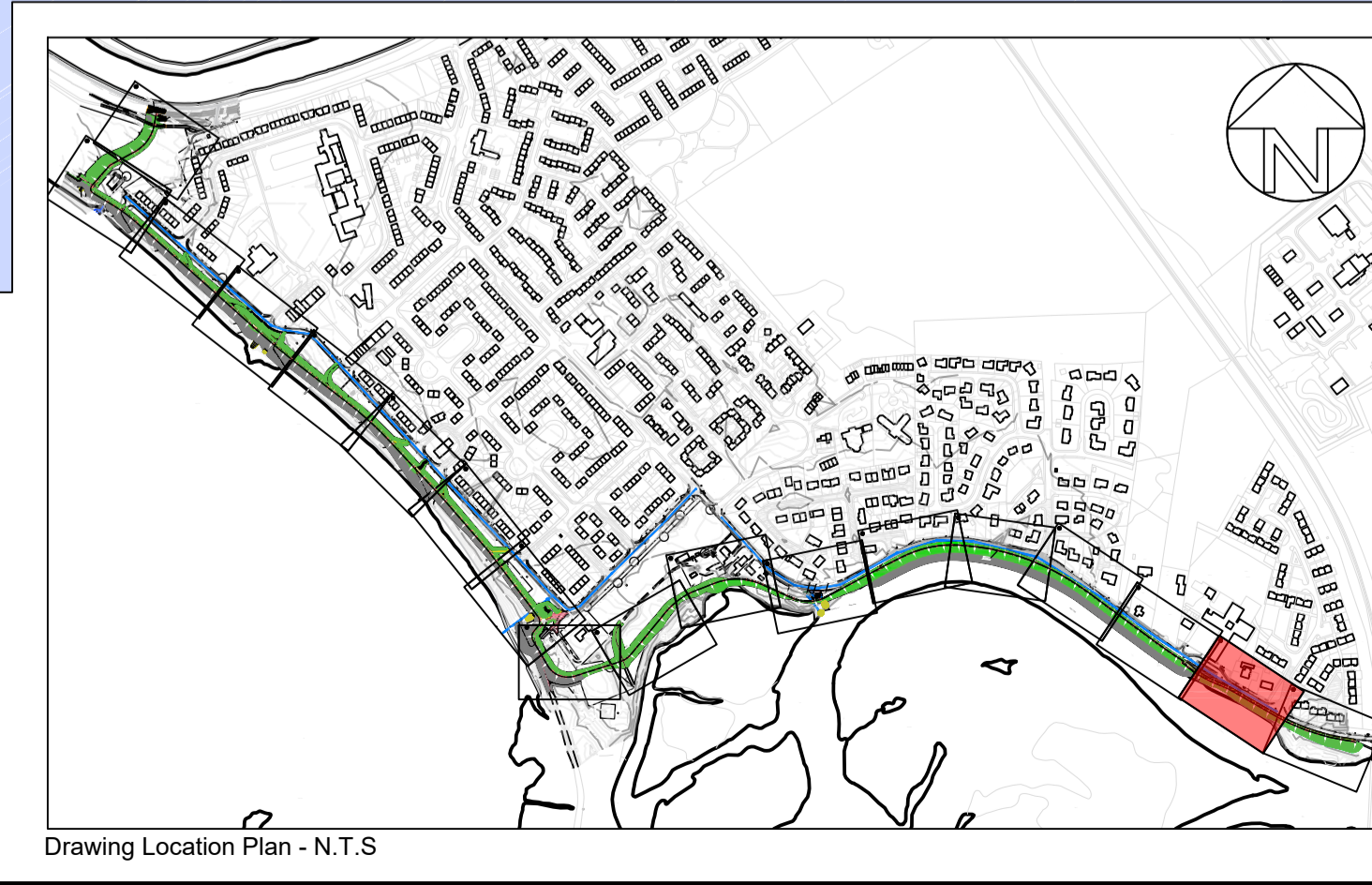
Drawing Number: 2013s7413-JBAU-00-00-DR-C-1018

Drawn:	B Henderson	16.12.16
Designed:	N. Tourigny	16.12.16
Checked:	I. Ferguson	09.01.17
Approved:	R. Dobson	09.01.17

Revision: 2

LEGEND

EXISTING WATERCOURSE / SEA	OUTFALL APRON	PROPOSED MANHOLE	Scottish Water - Combined Storm Overflow
REPROFILED GROUND	PROPOSED SURFACE WATER DRAINAGE	FLOOD EMBANKMENT	Scottish Water - Surface Water
FOOTPATH (SURFACED ASPHALT)	LIMITS OF LAND AFFECTED BY OPERATIONS	EXISTING CULVERT	Scottish Water - Foul Water
SHARED CYCLE / FOOTPATH (SURFACED ASPHALT)	OPERATION ARROW	TREE OR GROUP TO BE RETAINED	Scottish Water - Distribution Main
ACCESS RAMP (CONCRETE)	OPERATION CONTINUATION MARKER	TREE OR GROUP TO BE REMOVED	Crown Estate / BSW - Water Pipe
VEHICLE ACCESS (SURFACED ASPHALT)	SECTION MARKER	SSE - Underground Low Voltage	British Telecom - Overhead
VEHICLE ACCESS (UNSURFACED)	FLOOD WALL	Unknown Utility - Pipe	British Telecom - Proposed Underground
ROCK ARMOUR SIDE SLOPES	FLOOD GATE	Existing Watercourse	British Telecom - Underground
		The Highland Council - Street Lighting	SSE - Overhead 11kV High Voltage
			SSE - Underground 11kV



CONTINUATION ON 2013s7413-JBAU-00-00-DR-C-1017

CONTINUATION ON 2013s7413-JBAU-00-00-DR-C-1019