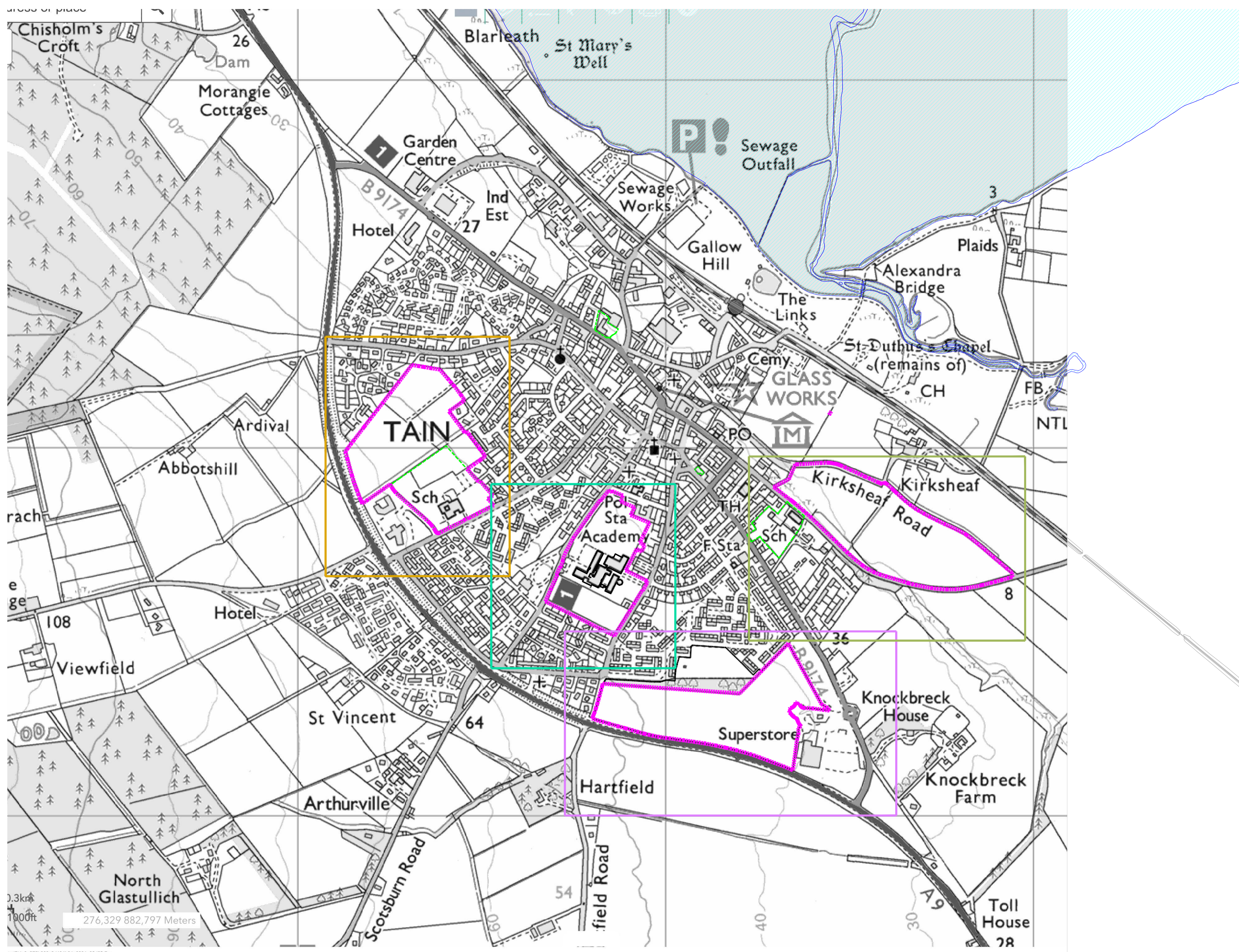


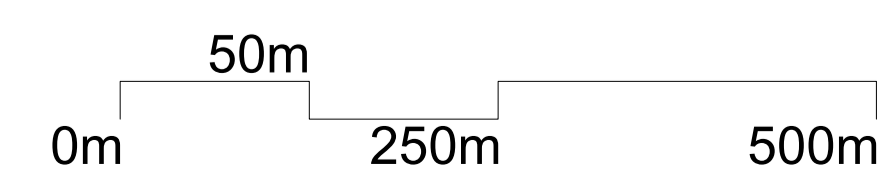


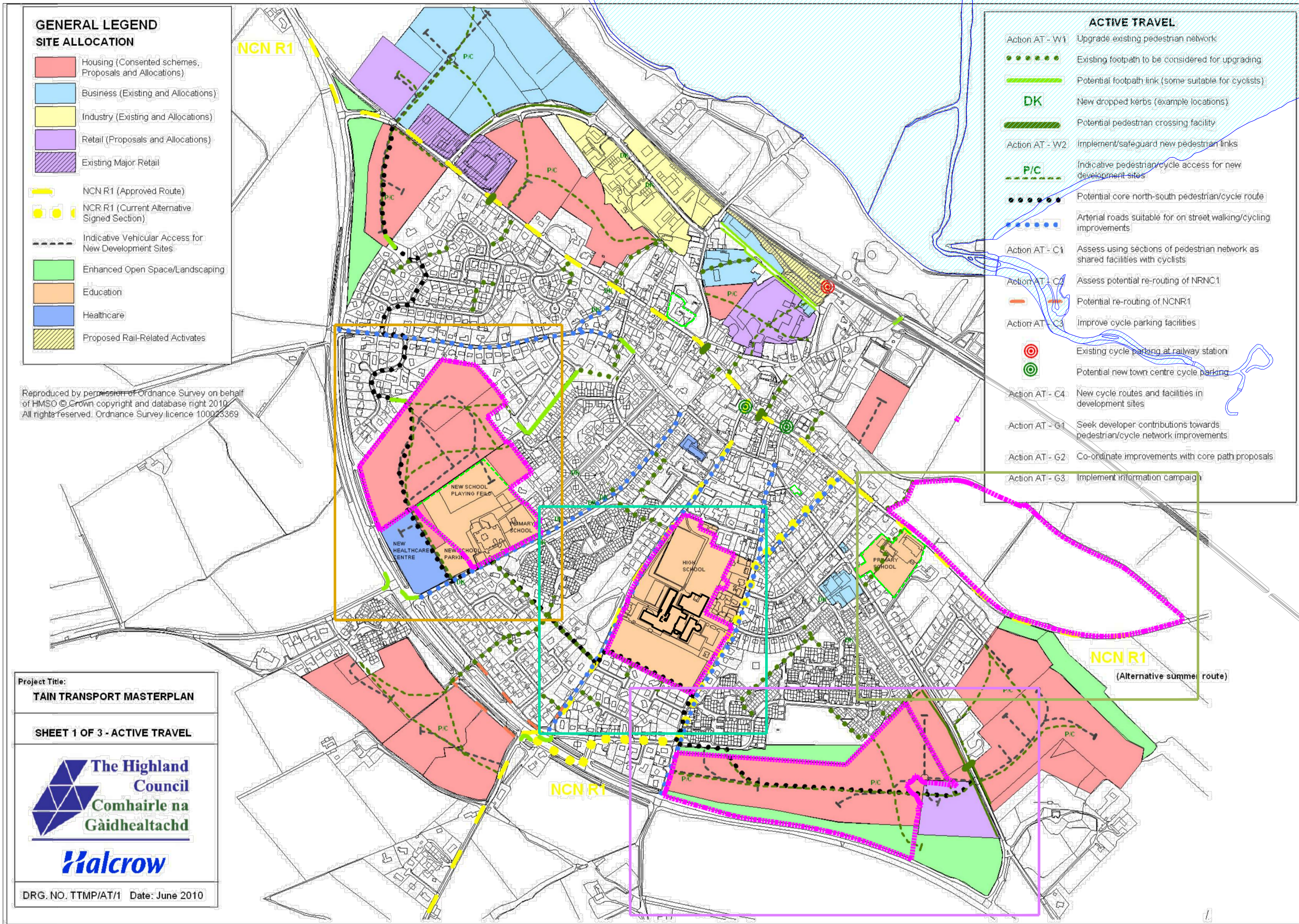
CLIENT						SCALE
PROJECT						DATE
CONTACT						DRAWN BY
DRAWING TITLE						CHECKED BY
PURPOSE OF ISSUE						PAPER
						A1
DRAWING NUMBER	PROJECT NUMBER	AGENT	SERIES	UNIQUE NO.	REV	



mm7id=9a975b260c2d484b84e6881a82d9b7a

CLIENT	SCALE			
PROJECT	DATE			
CONTACT	DRAWN BY			
DRAWING TITLE	CHECKED BY			
PURPOSE OF ISSUE	PAPER			
	A1			
DRAWING NUMBER	REV			
PROJECT NUMBER	AGENT	SERIES	UNIQUE NO.	REV





- GENERAL LEGEND**
- SITE ALLOCATION**
- Housing (Consented schemes, Proposals and Allocations)
 - Business (Existing and Allocations)
 - Industry (Existing and Allocations)
 - Retail (Proposals and Allocations)
 - Existing Major Retail
 - NCN R1 (Approved Route)
 - NCR R1 (Current Alternative Signed Section)
 - Indicative Vehicular Access for New Development Sites
 - Enhanced Open Space/Landscaping
 - Education
 - Healthcare
 - Proposed Rail-Related Activities

Reproduced by permission of Ordnance Survey on behalf of HMSO © Crown copyright and database right 2010. All rights reserved. Ordnance Survey licence 100023369

Project Title:
TAIN TRANSPORT MASTERPLAN

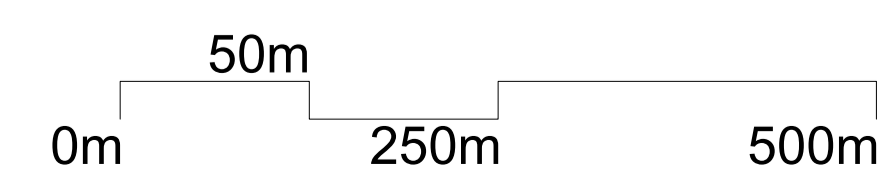
SHEET 1 OF 3 - ACTIVE TRAVEL


The Highland Council
Comhairle na Gàidhealtachd

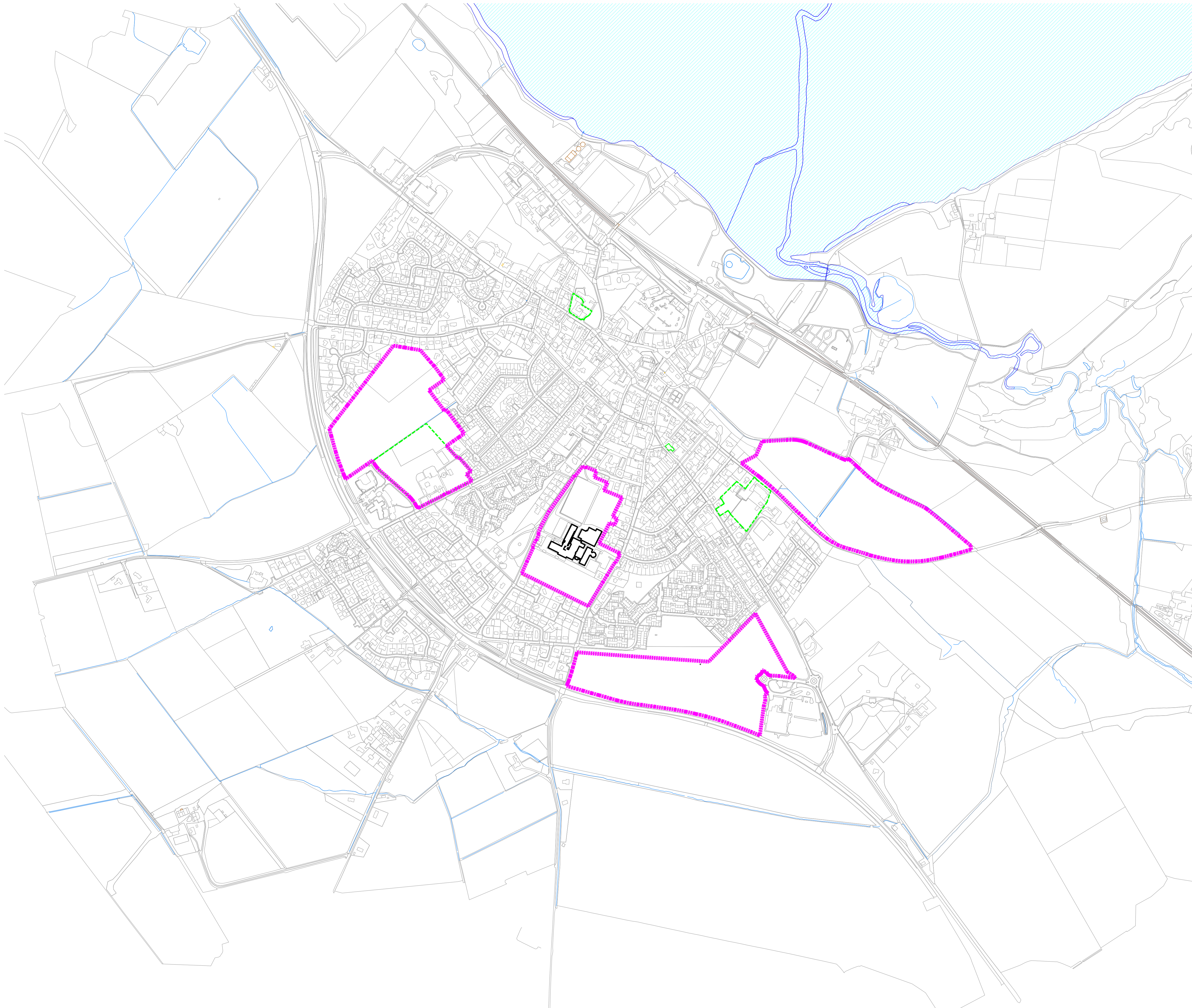

Halcrow

DRG. NO. TTMP/AT/1 Date: June 2010

- ACTIVE TRAVEL**
- Action AT - W1 Upgrade existing pedestrian network
 - Existing footpath to be considered for upgrading
 - Potential footpath link (some suitable for cyclists)
 - DK** New dropped kerbs (example locations)
 - Potential pedestrian crossing facility
 - Action AT - W2 Implement/safeguard new pedestrian links
 - P/C** Indicative pedestrian/cycle access for new development sites
 - Potential core north-south pedestrian/cycle route
 - Arterial roads suitable for on street walking/cycling improvements
 - Action AT - C1 Assess using sections of pedestrian network as shared facilities with cyclists
 - Action AT - C2 Assess potential re-routing of NRNC1
 - Potential re-routing of NCNR1
 - Action AT - C3 Improve cycle parking facilities
 - Existing cycle parking at railway station
 - Potential new town centre cycle parking
 - Action AT - C4 New cycle routes and facilities in development sites
 - Action AT - G1 Seek developer contributions towards pedestrian/cycle network improvements
 - Action AT - G2 Co-ordinate improvements with core path proposals
 - Action AT - G3 Implement information campaign

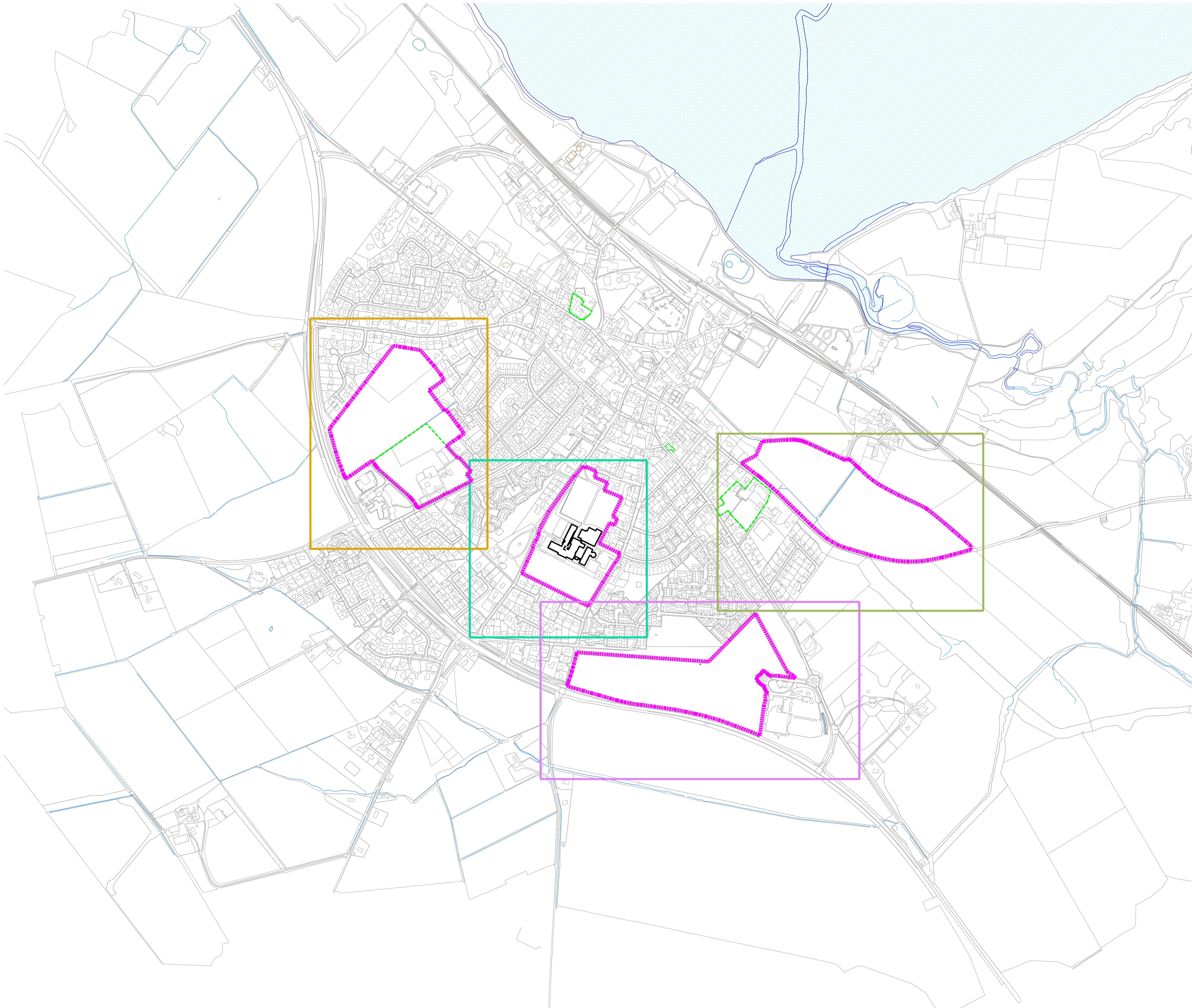


CLIENT	SCALE
PROJECT	DATE
CONTACT	DRAWN BY
DRAWING TITLE	CHECKED BY
PURPOSE OF ISSUE	PAPER
	A1
DRAWING NUMBER	REV
PROJECT NUMBER	AGENT
SERIES	UNIQUE NO.



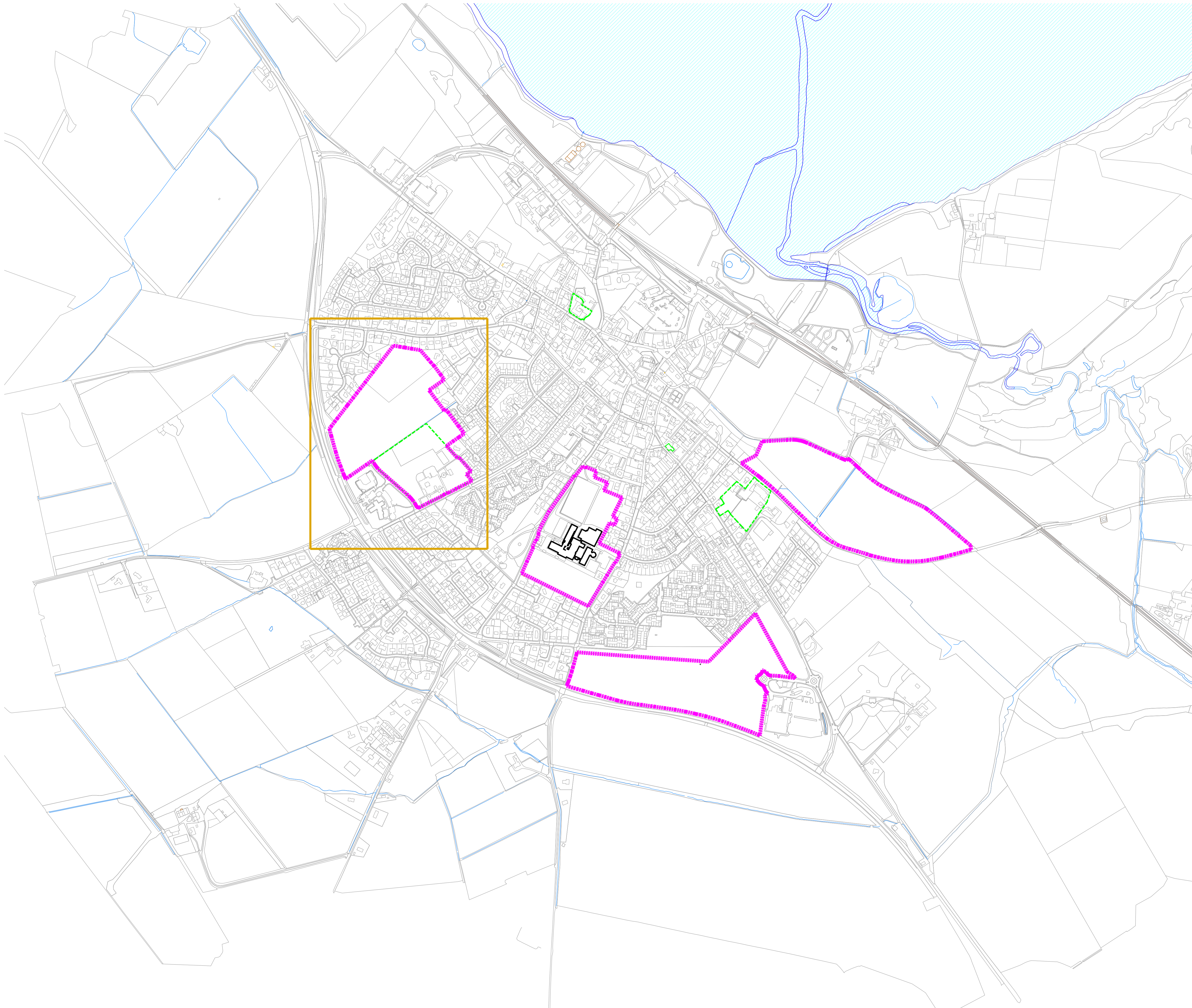
DEVELOPMENT AND
INFRASTRUCTURE SERVICE

CLIENT					SCALE
PROJECT					DATE
CONTACT					DRAWN BY
DRAWING TITLE					CHECKED BY
PURPOSE OF ISSUE					PAPER A1
DRAWING NUMBER	PROJECT NUMBER	AGENT	SERIES	UNIQUE NO.	REV

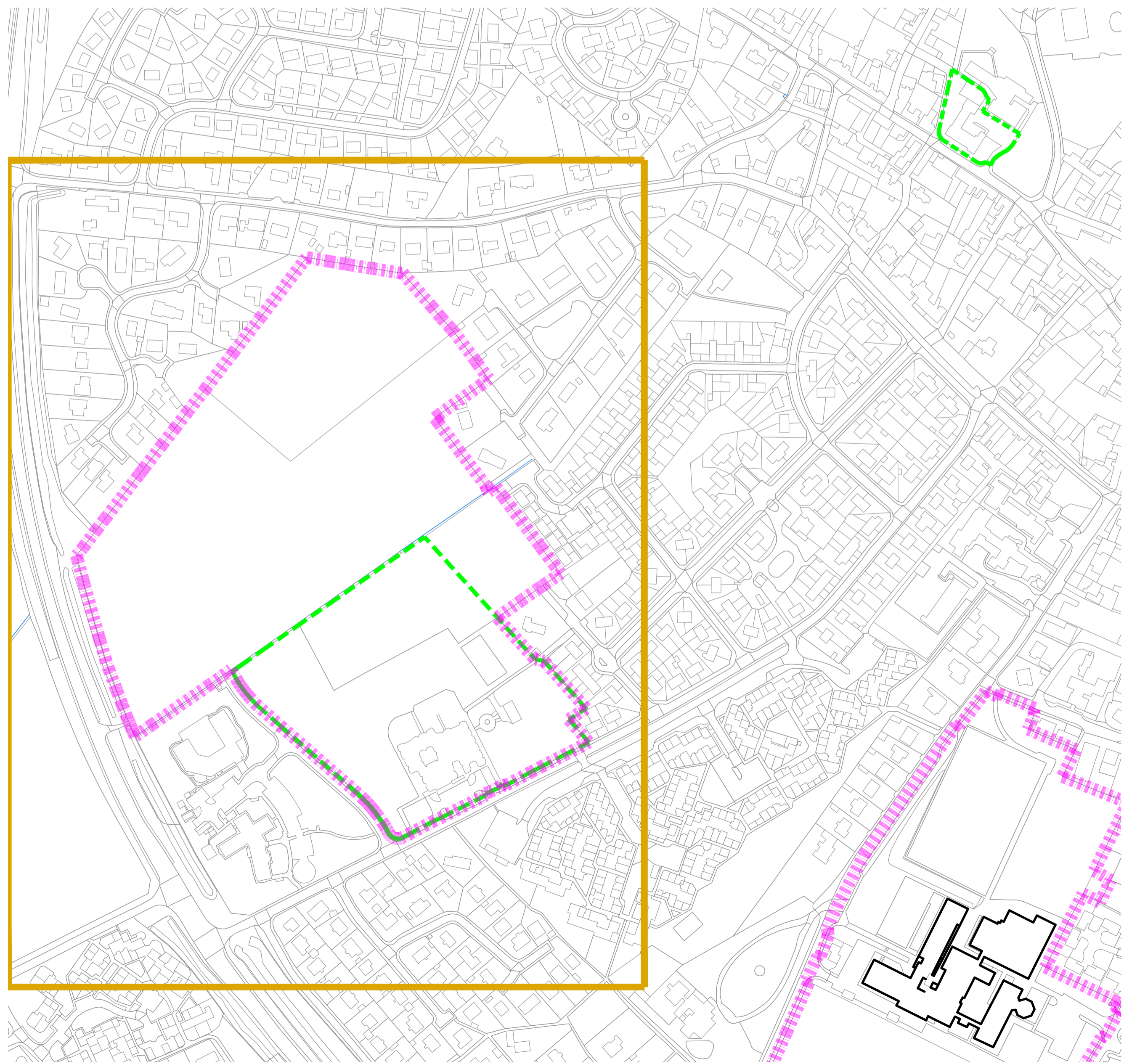


DEVELOPMENT AND
INFRASTRUCTURE SERVICE

CLIENT					SCALE
PROJECT					DATE
CONTACT					DRAWN BY
DRAWING TITLE					CHECKED BY
PURPOSE OF ISSUE					PAPER A1
DRAWING NUMBER	PROJECT NUMBER	AGENT	SERIES	UNIQUE NO.	REV

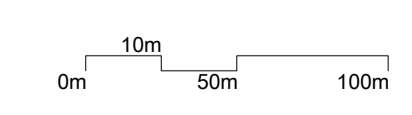


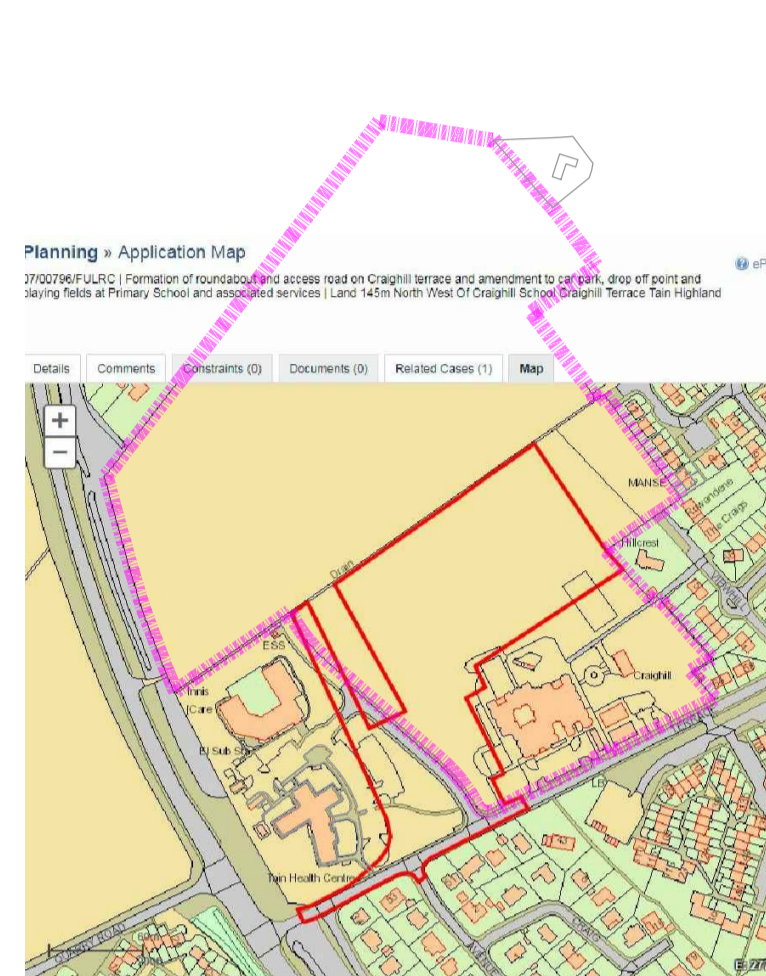
CLIENT					SCALE
PROJECT					DATE
CONTACT					DRAWN BY
DRAWING TITLE					CHECKED BY
PURPOSE OF ISSUE					PAPER
					A1
DRAWING NUMBER	PROJECT NUMBER	AGENT	SERIES	UNIQUE NO.	REV



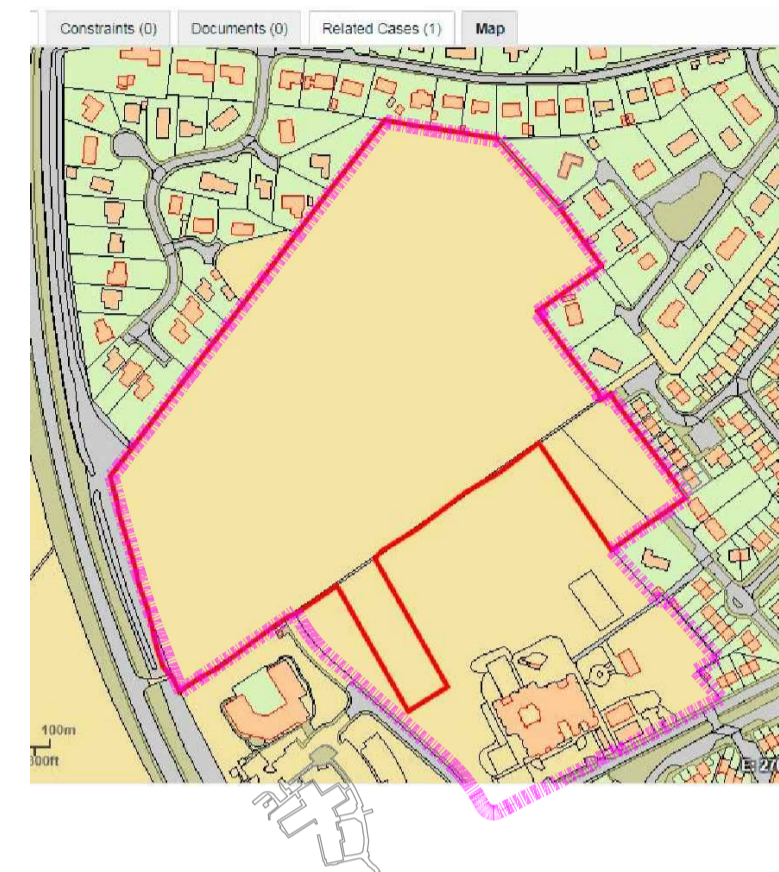
Site of existing Craighill Primary
(and additional housing land)
10.62Ha

CLIENT		care and learning			SCALE	varies
PROJECT		tain site appraisals			DATE	Oct. 2017
CONTACT		bruce ross			DRAWN BY	BR
DRAWING TITLE		site by craighill primary			CHECKED BY	-
PURPOSE OF ISSUE		information			PAPER	A1
DRAWING NUMBER	PROJECT NUMBER	AGENT	SERIES	UNIQUE NO.	REV	
	CAL 15088	[A]	sketch	xxx	-	

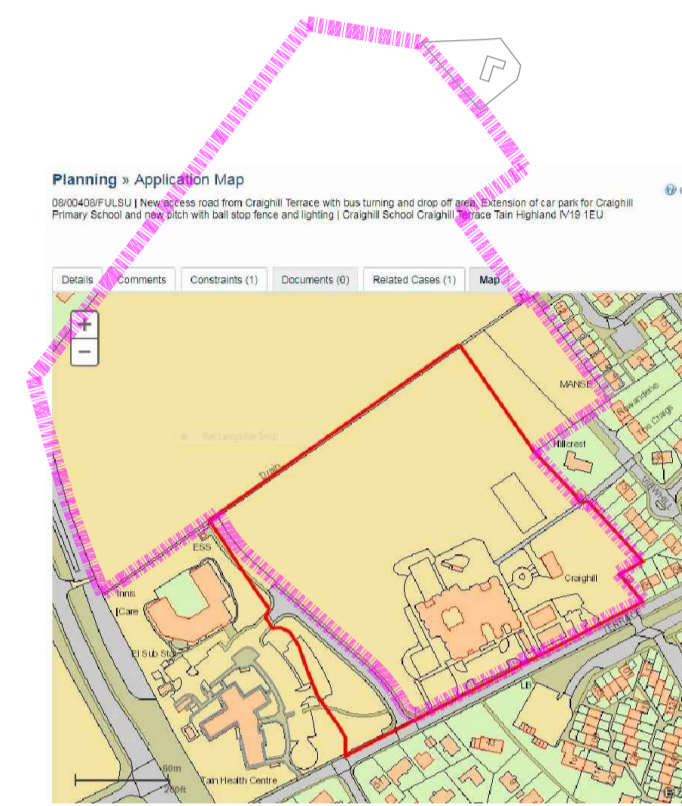




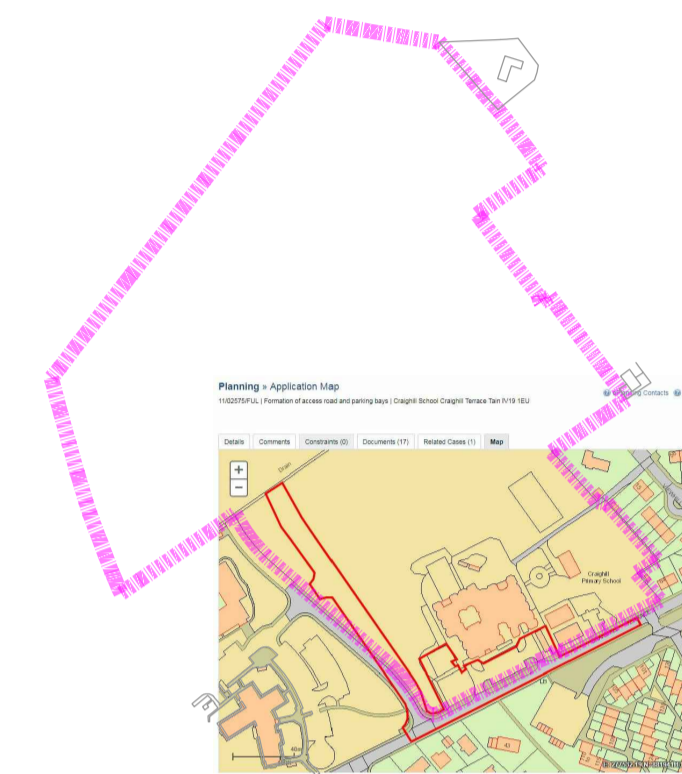
07/00796/FULRC
Formation of roundabout and access road on Craighill terrace and amendment to car park, drop off point and playing fields at Primary School and associated services | Land 145m North West Of Craighill School Craighill Terrace Tain Highland



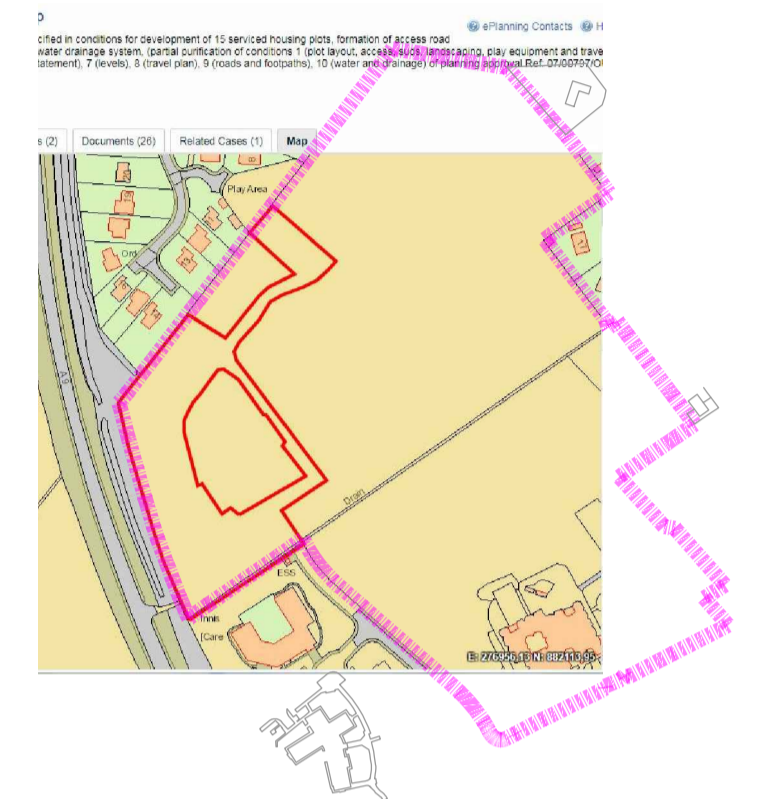
07/00797/OUTRC
Erection of 170 houses and associated infrastructure (Outline) | Land 145m North West Of Craighill School Craighill Terrace Tain Highland



08/00408/FULSU
New access road from Craighill Terrace with bus turning and drop off area. Extension of car park for Craighill Primary School and new pitch with ball stop fence and lighting | Craighill School Craighill Terrace Tain Highland IV19 1EU



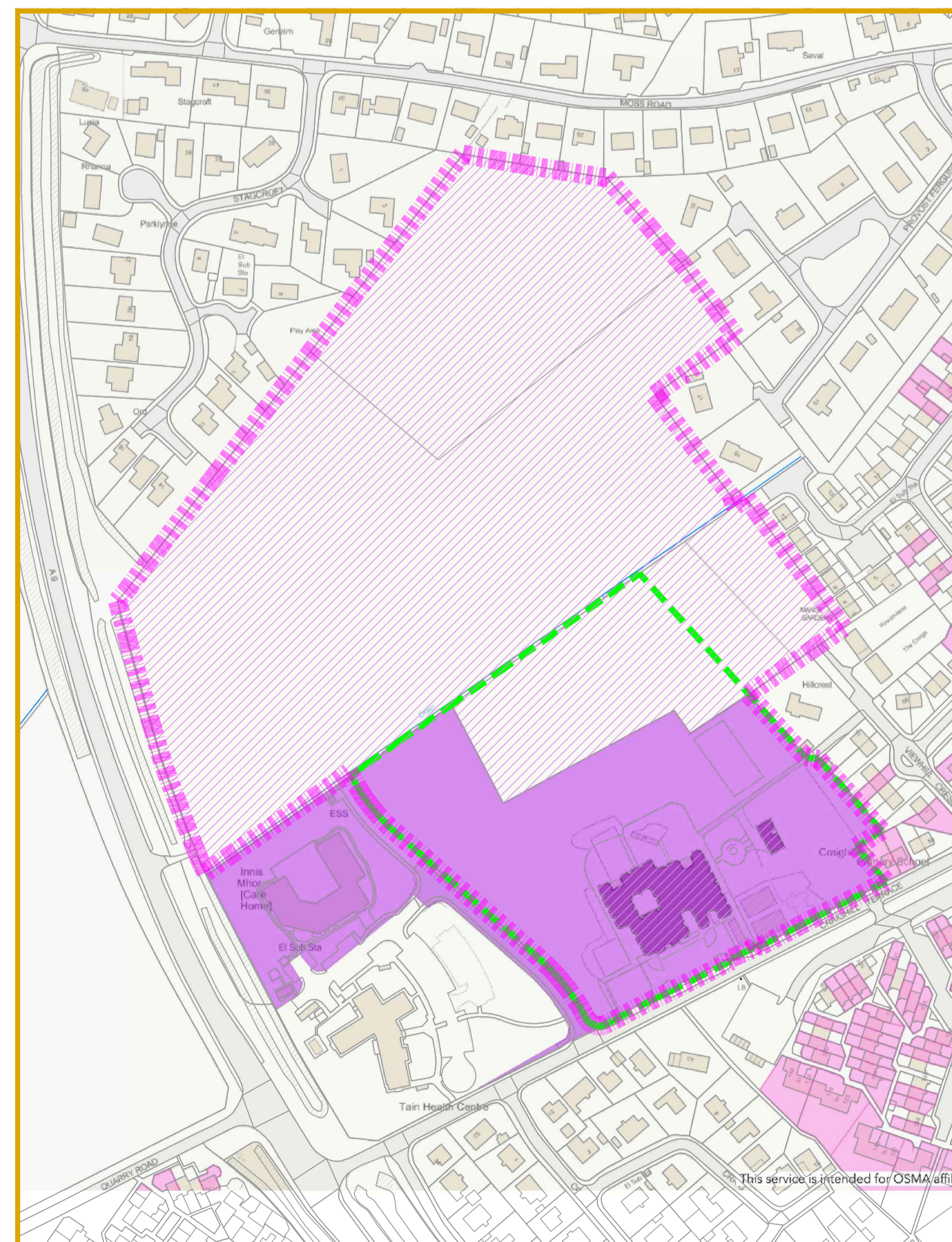
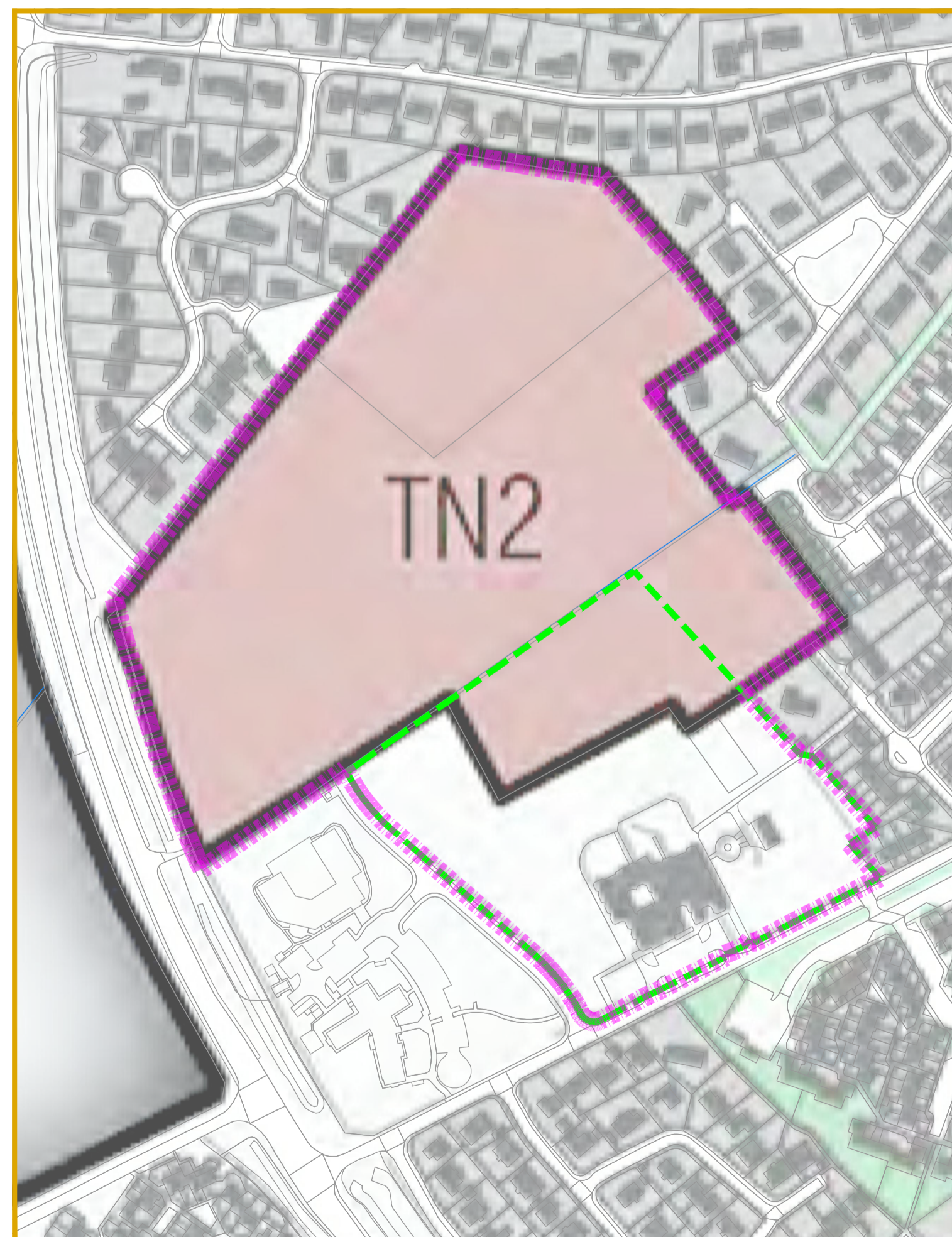
11/02575/FUL
Formation of access road and parking bays | Craighill School Craighill Terrace Tain IV19 1EU



13/00161/MSC
Approval of matters specified in conditions for development of 15 serviced housing plots, formation of access road and footpaths and installation of surface water drainage system.

11/04479/FUL
Section 42 application to vary condition 1 attached to planning permission ref no 07/00797/OUTSU

12/01560/FUL
Variation of Condition No.1 of Planning Permission 11/02575/FUL - to remove the 2m footpath setback from the road edge (section 42 Application)

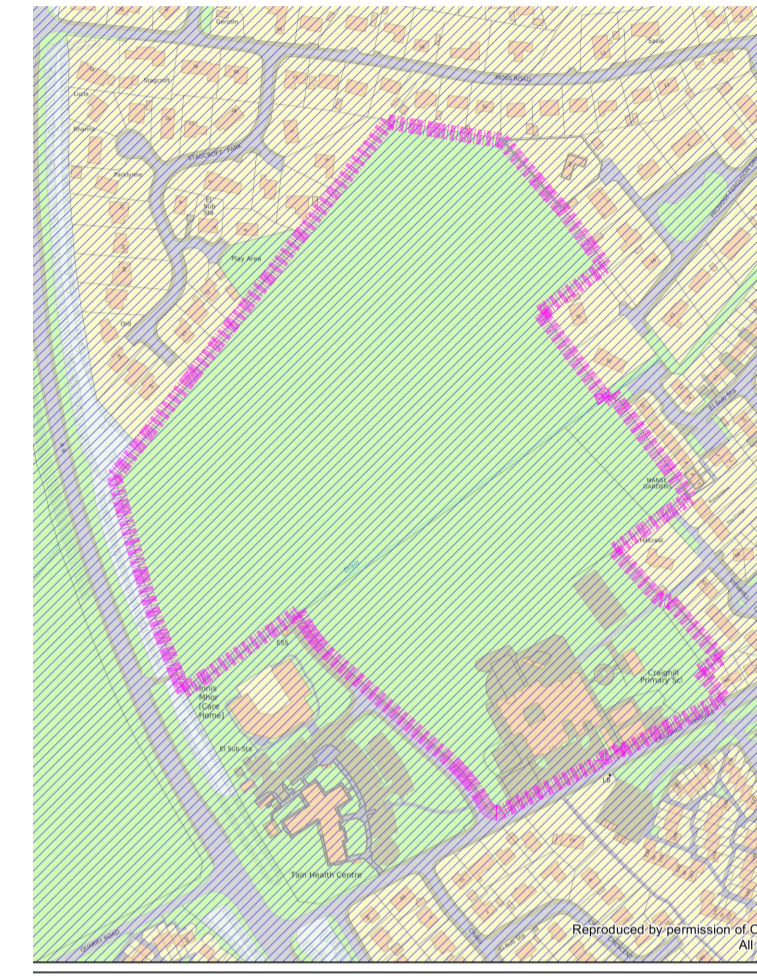


- HC owned site (common good)
- HC owned site (general)
- HC owned building (general)

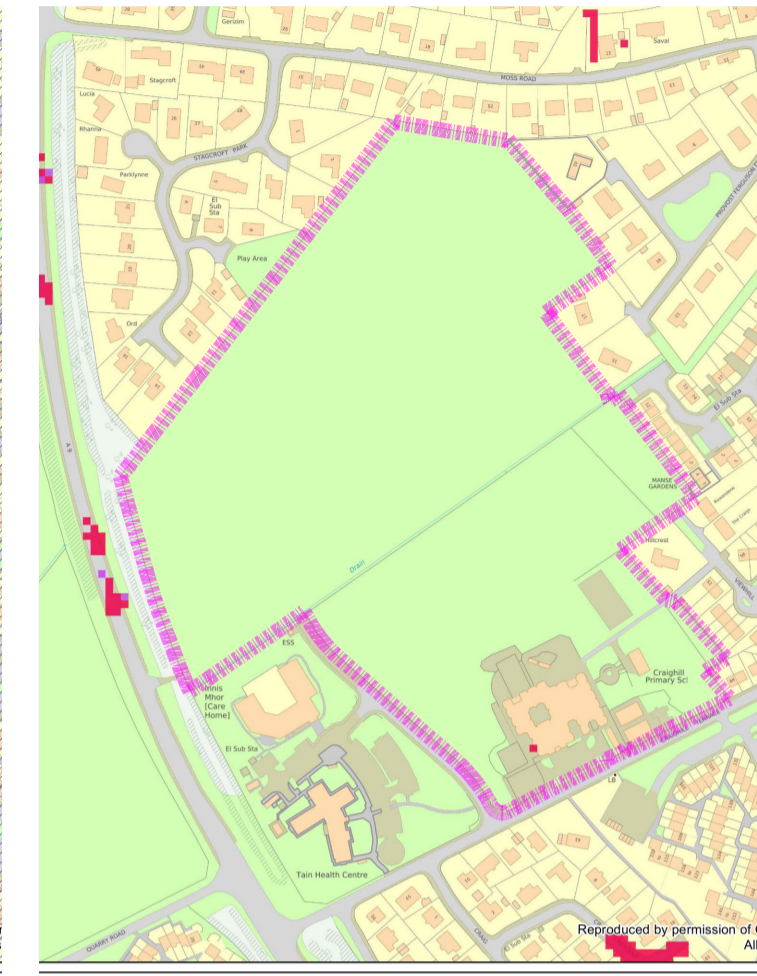
TN2
Housing
Land to rear of Craighill Primary School
Area (ha) : 7.9
Housing Capacity: 170

Development in accordance with Planning Permission
07/00797/OUTRC/FULRC
including access from Craighill Terrace

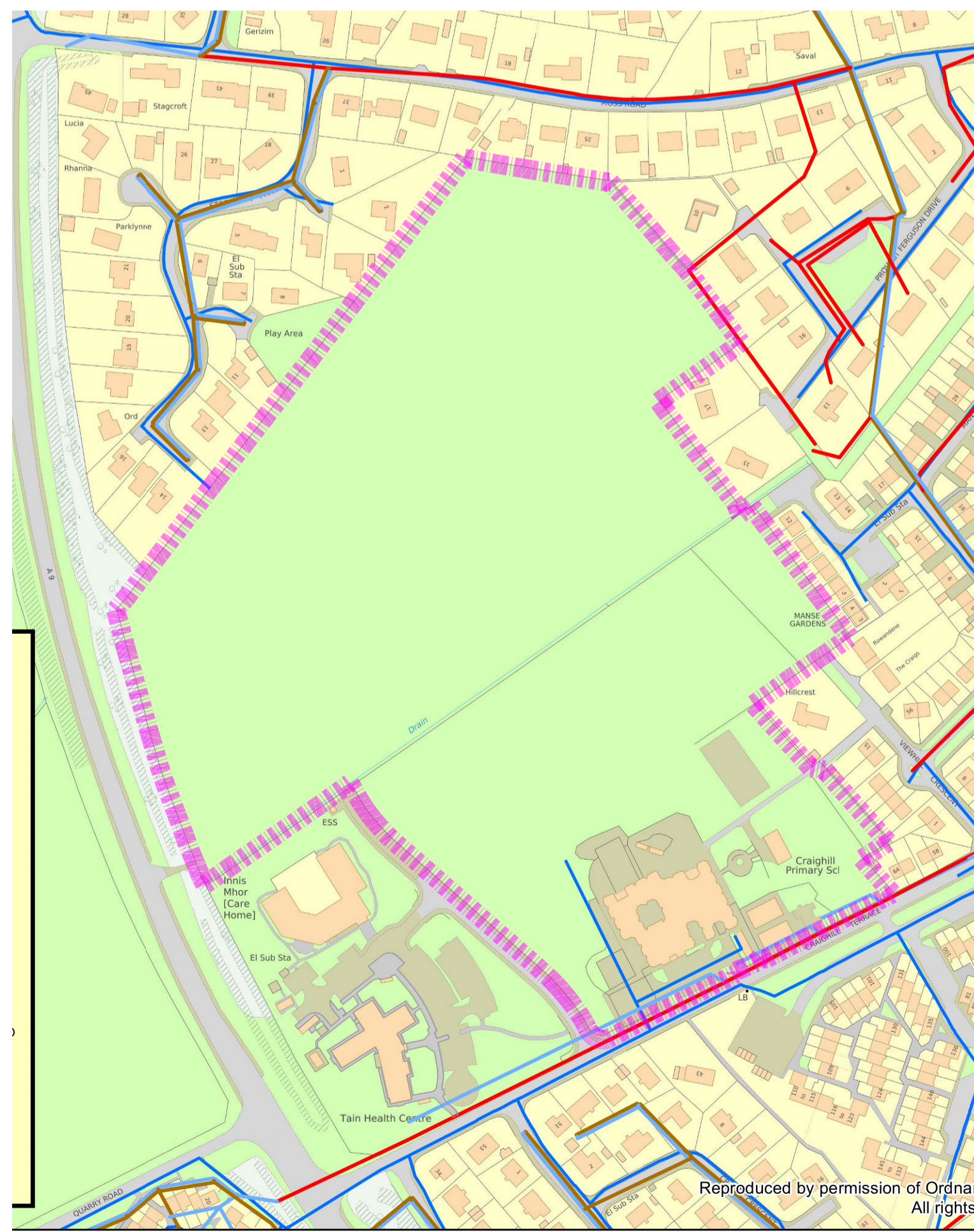
CLIENT	care and learning	SCALE	varies
PROJECT	tain site appraisals	DATE	Oct. 2017
CONTACT	bruce ross	DRAWN BY	BR
DRAWING TITLE	site by craighill primary	CHECKED BY	-
PURPOSE OF ISSUE	information	PAPER	A1
DRAWING NUMBER	CAL 15088 [A]	SERIES	sketch
AGENT	[A]	UNIQUE NO.	xxx
		REV	-



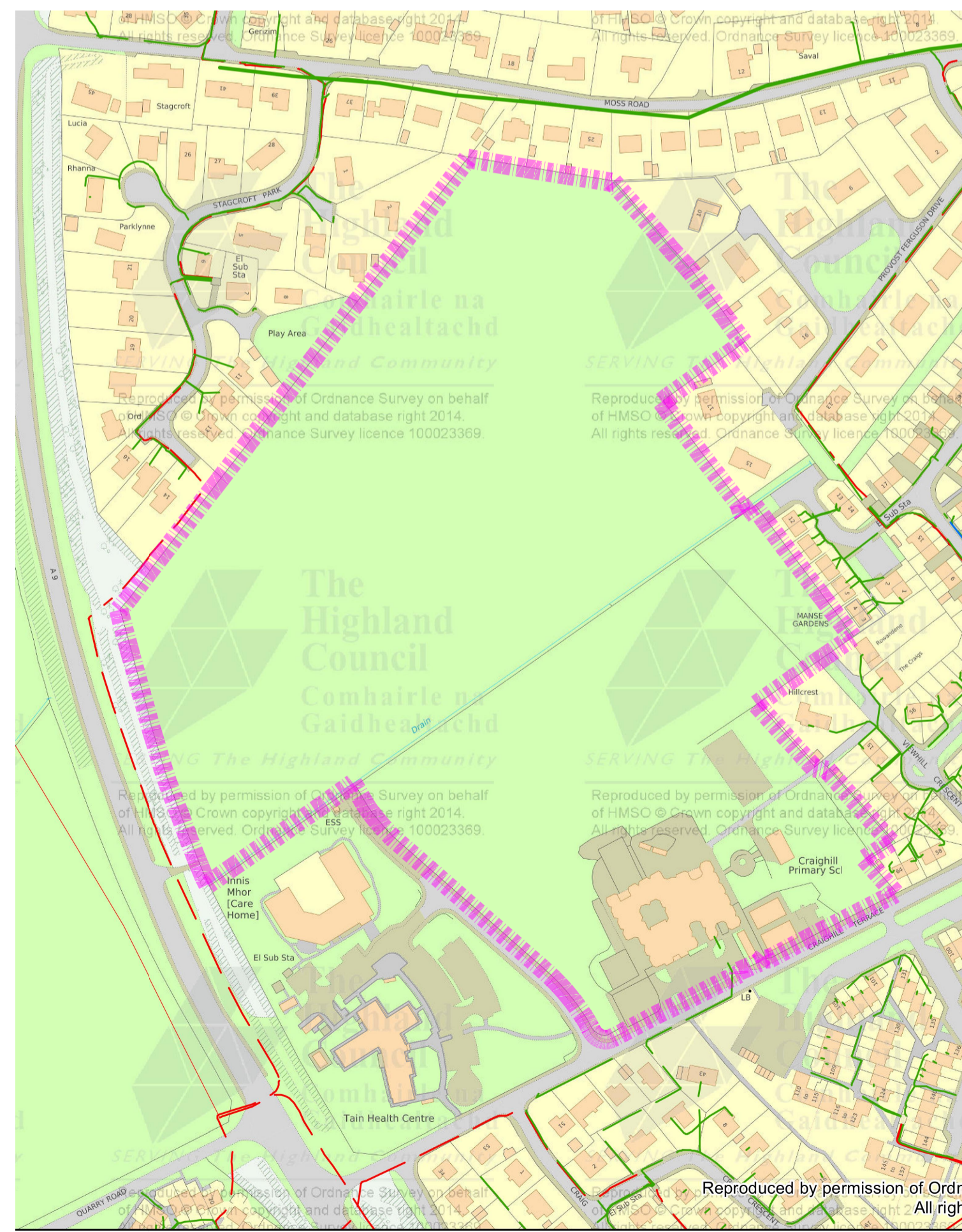
radon [0-1%]



flooding



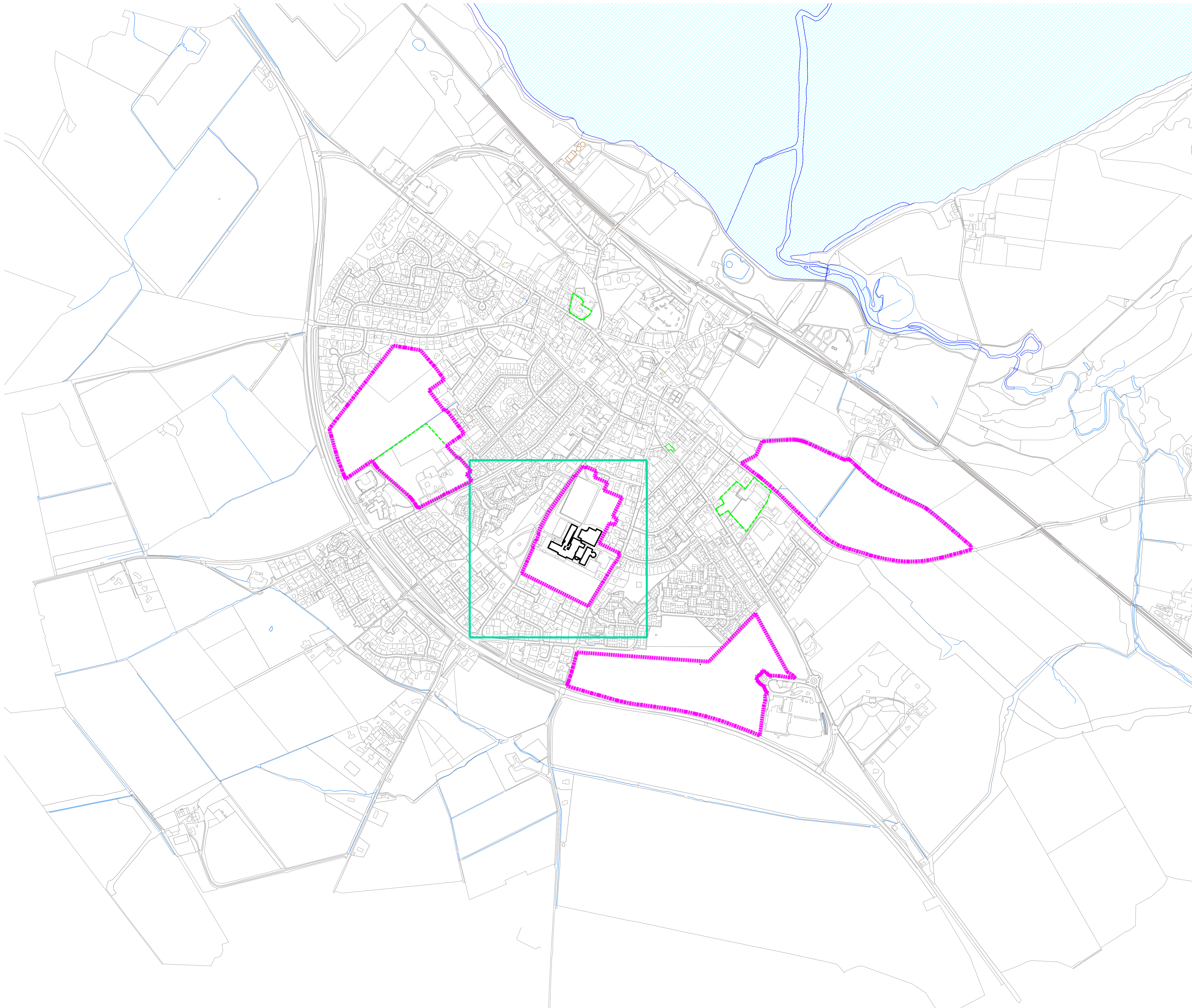
water and drainage



electricity

- combined sewer
- foul sewer
- surface water drainage
- mains supply water
- LV (overhead)
- HV (overhead)
- - LV (underground)
- - HV (underground)

CLIENT		care and learning		SCALE	varies
PROJECT		rain site appraisals		DATE	Oct. 2017
CONTACT		bruce ross		DRAWN BY	BR
DRAWING TITLE		site by craighill primary		CHECKED BY	-
PURPOSE OF ISSUE		information		PAPER	A1
DRAWING NUMBER	PROJECT NUMBER	AGENT	SERIES	UNIQUE NO.	REV
CAL 15088	[A]	sketch	xxx	-	-



DEVELOPMENT AND
INFRASTRUCTURE SERVICE

CLIENT					SCALE
PROJECT					DATE
CONTACT					DRAWN BY
DRAWING TITLE					CHECKED BY
PURPOSE OF ISSUE					PAPER A1
DRAWING NUMBER	PROJECT NUMBER	AGENT	SERIES	UNIQUE NO.	REV