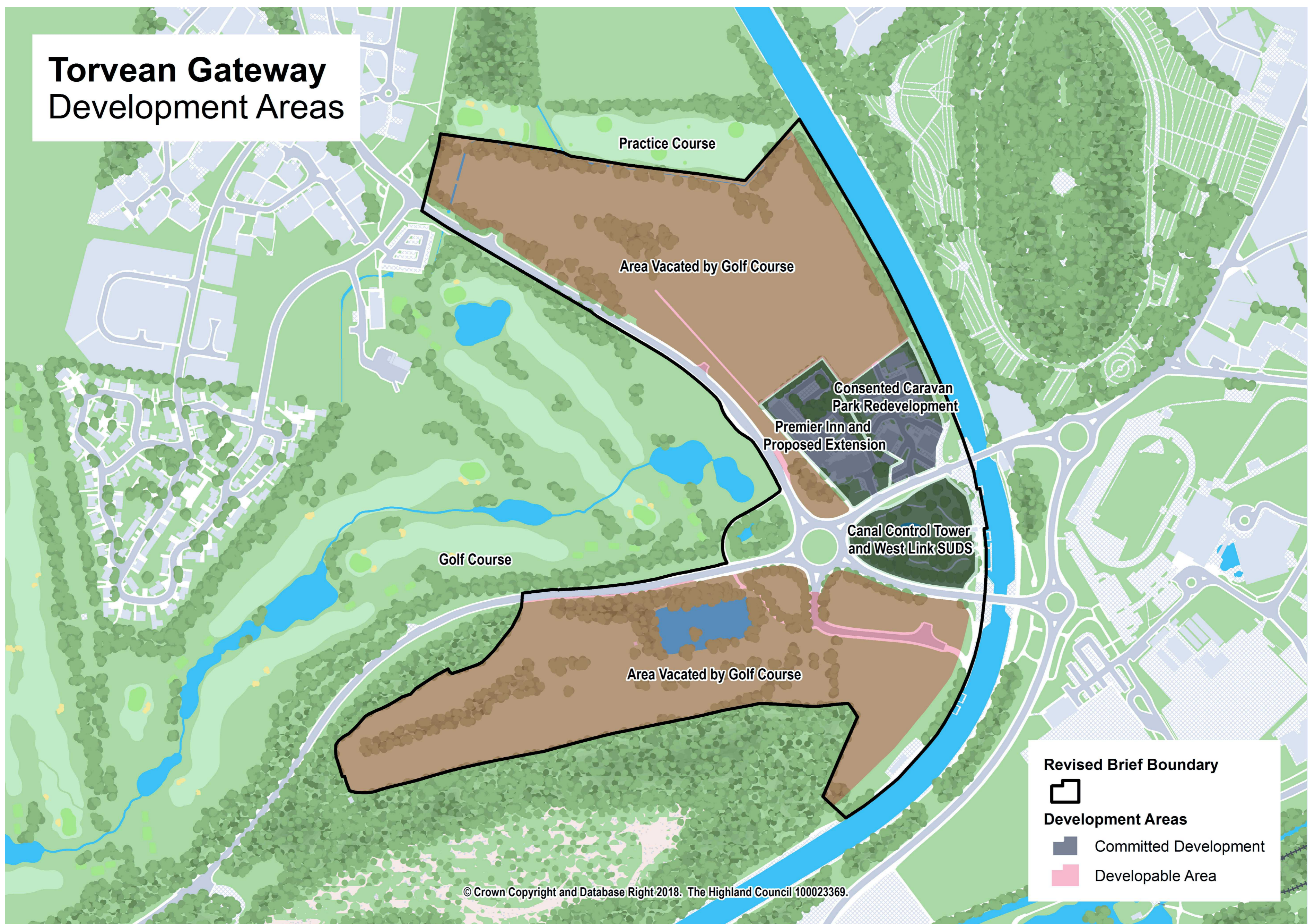
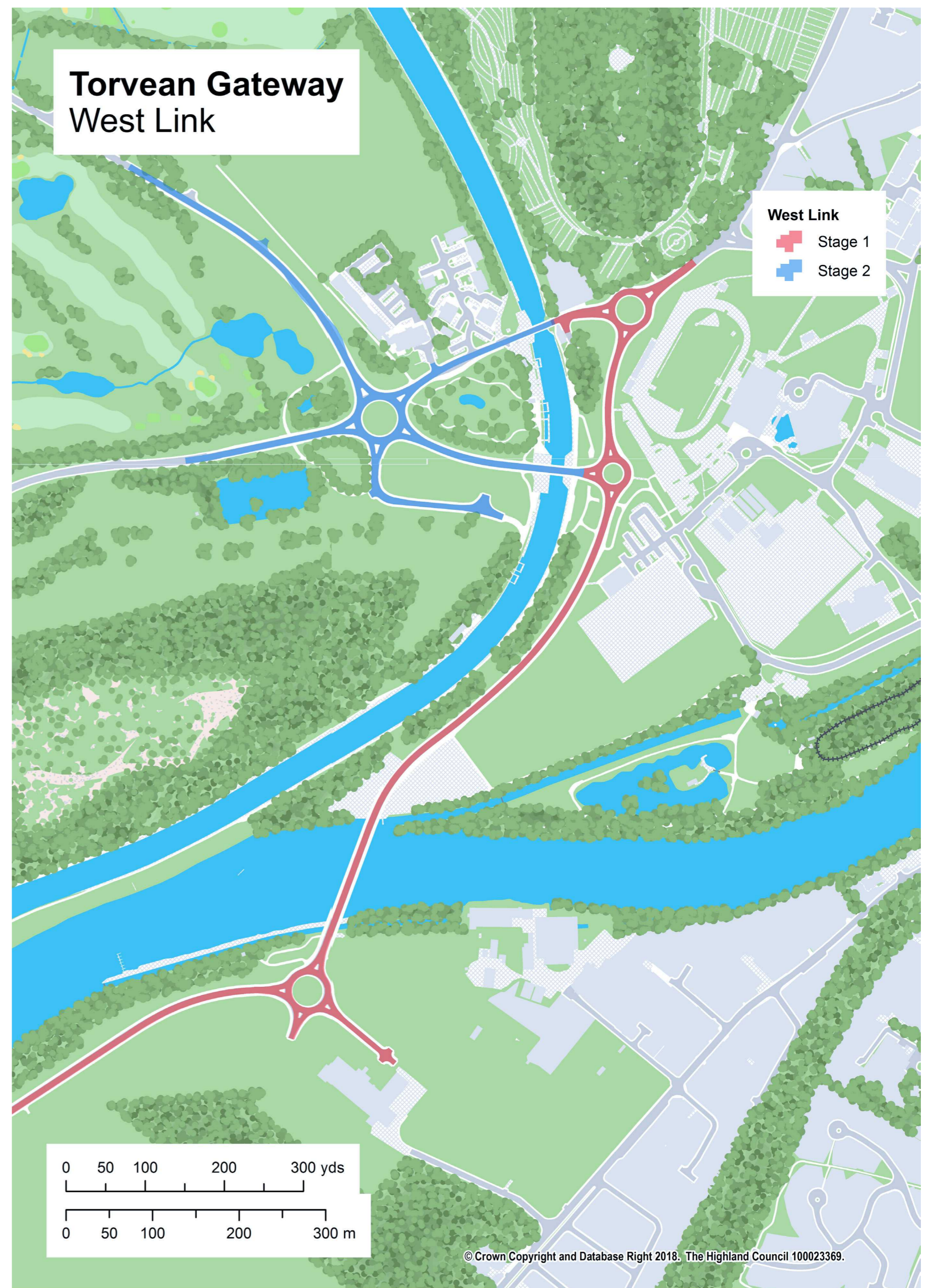


Your chance to shape the future of this unique area

Following the delivery of West link Stage 1, including the improvements to sports facilities, footpaths and cycle routes, the Council is now progressing with Stage 2 of this major project. This includes the delivery of an additional swing bridge across the Caledonian Canal to link to the A82 at a new roundabout and a realigned southern section of General Booth Road.

The Council is reviewing land uses surrounding these new roads to address the city's current needs. There are opportunities to deliver a high quality park and recreational spaces, combined with sports and tourism facilities and much needed homes for our growing city.

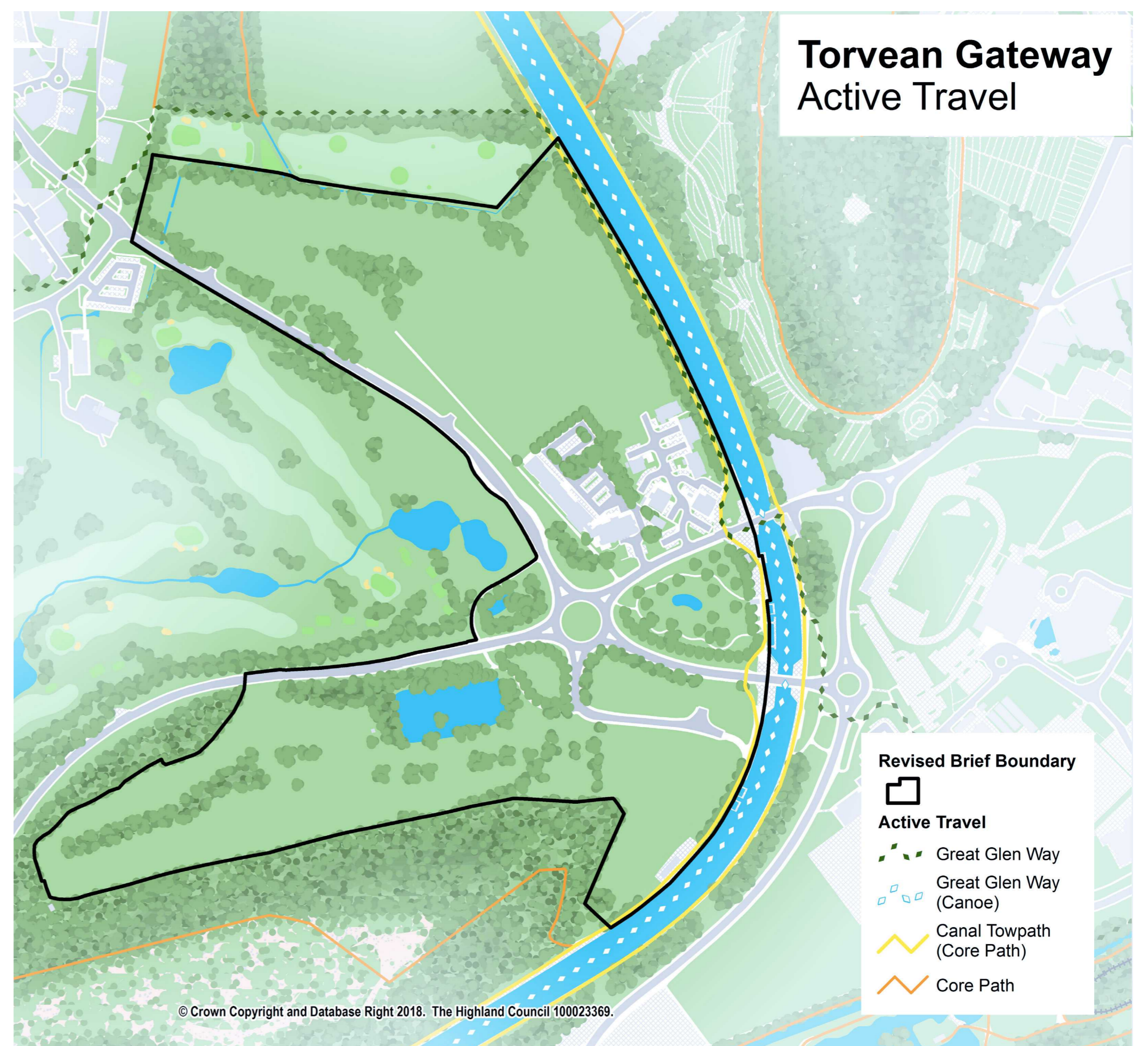
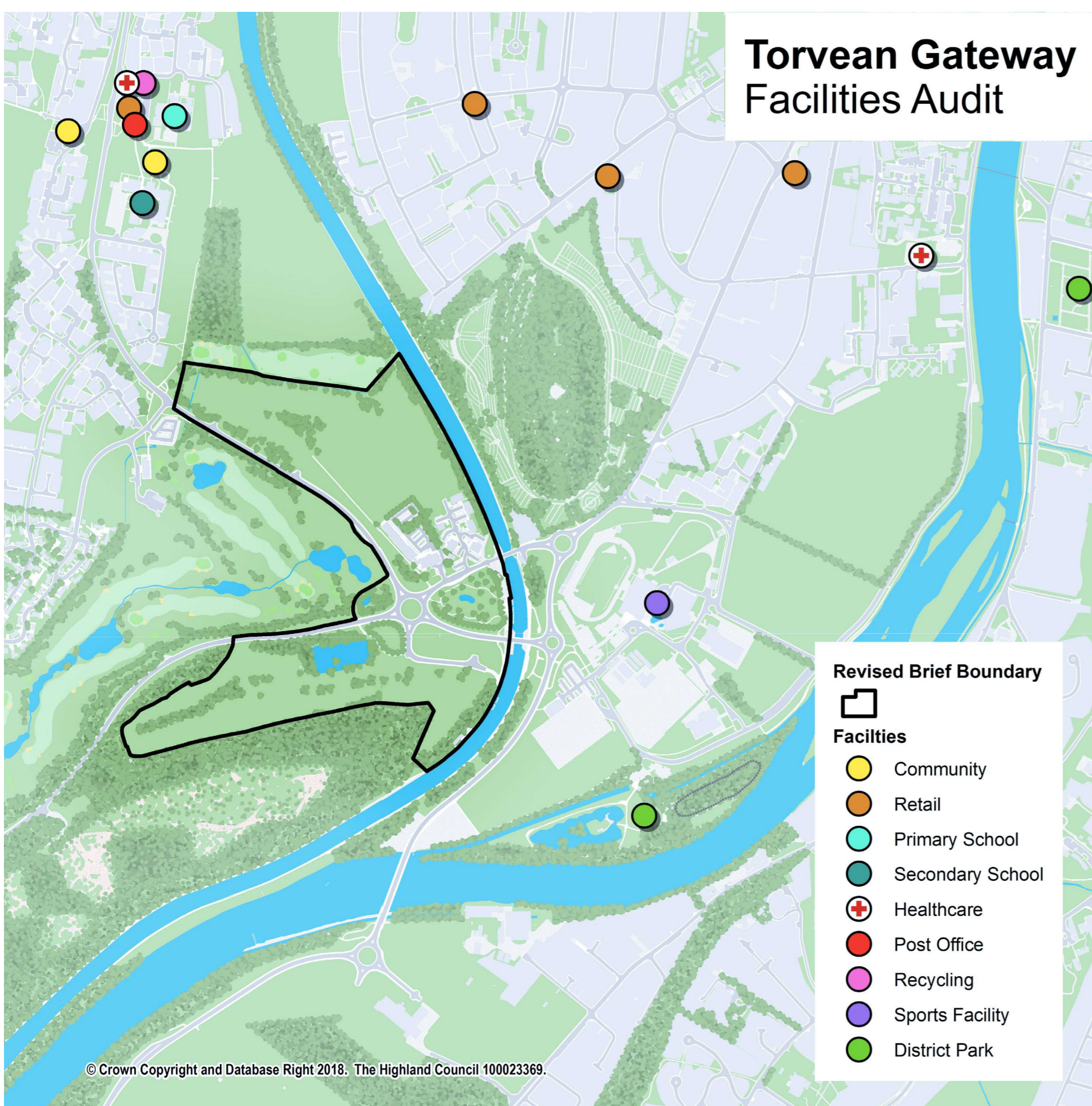


Your chance to shape the future of this unique area

Land in this area is allocated in the Inner Moray Firth Local Development Plan for a range of uses and a Development Brief was prepared for the wider area in 2013.



This part of this city is well served by a range of great facilities connected by good walking and cycling routes.



Your chance to shape the future of this unique area

Land to the north of the A82

There are great opportunities to reuse the land being vacated by Golf Courses for different things. The land to the north of the A82 is closest to existing schools, shops and other community facilities and this could make a great location for a new neighbourhood and local park.



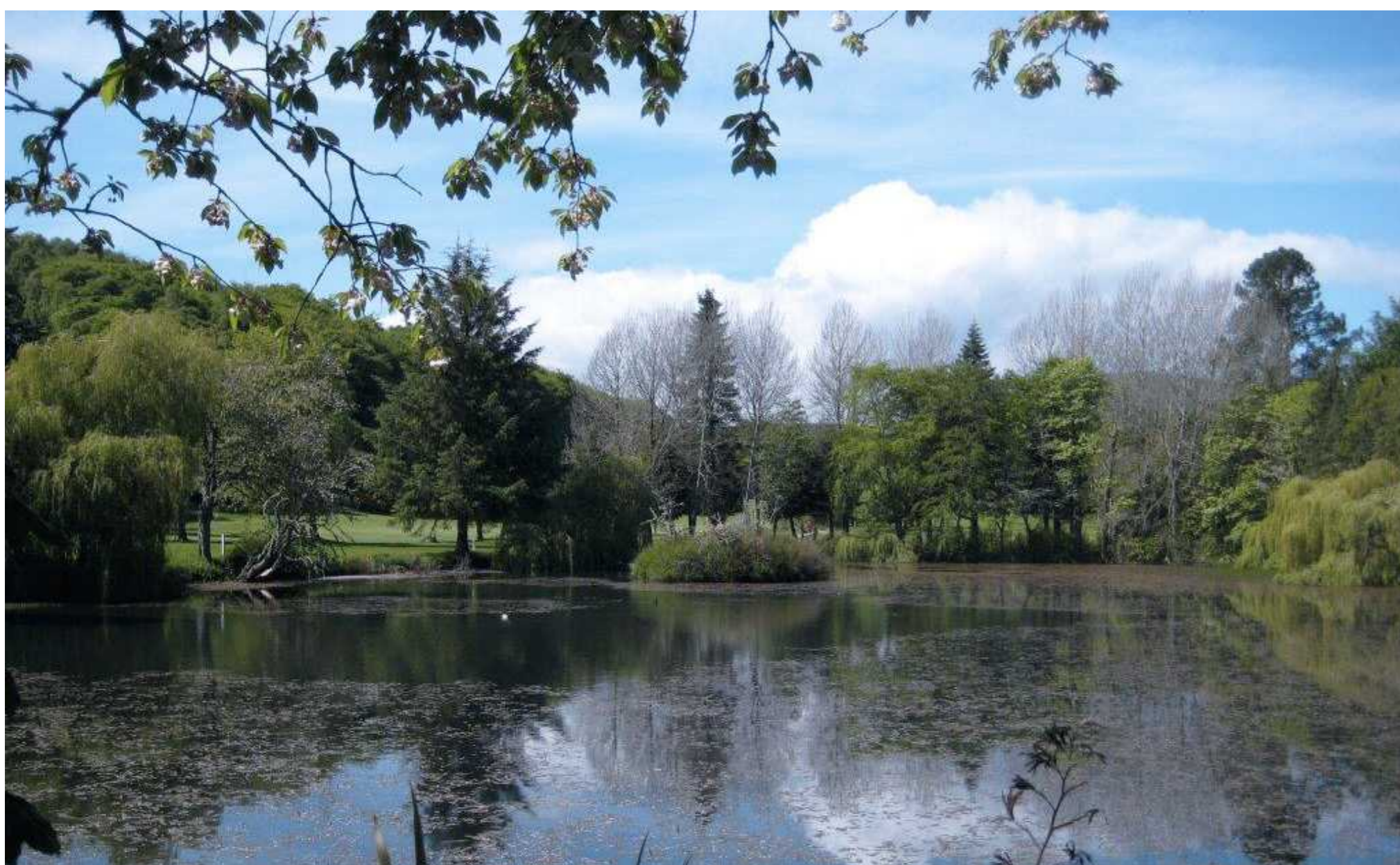
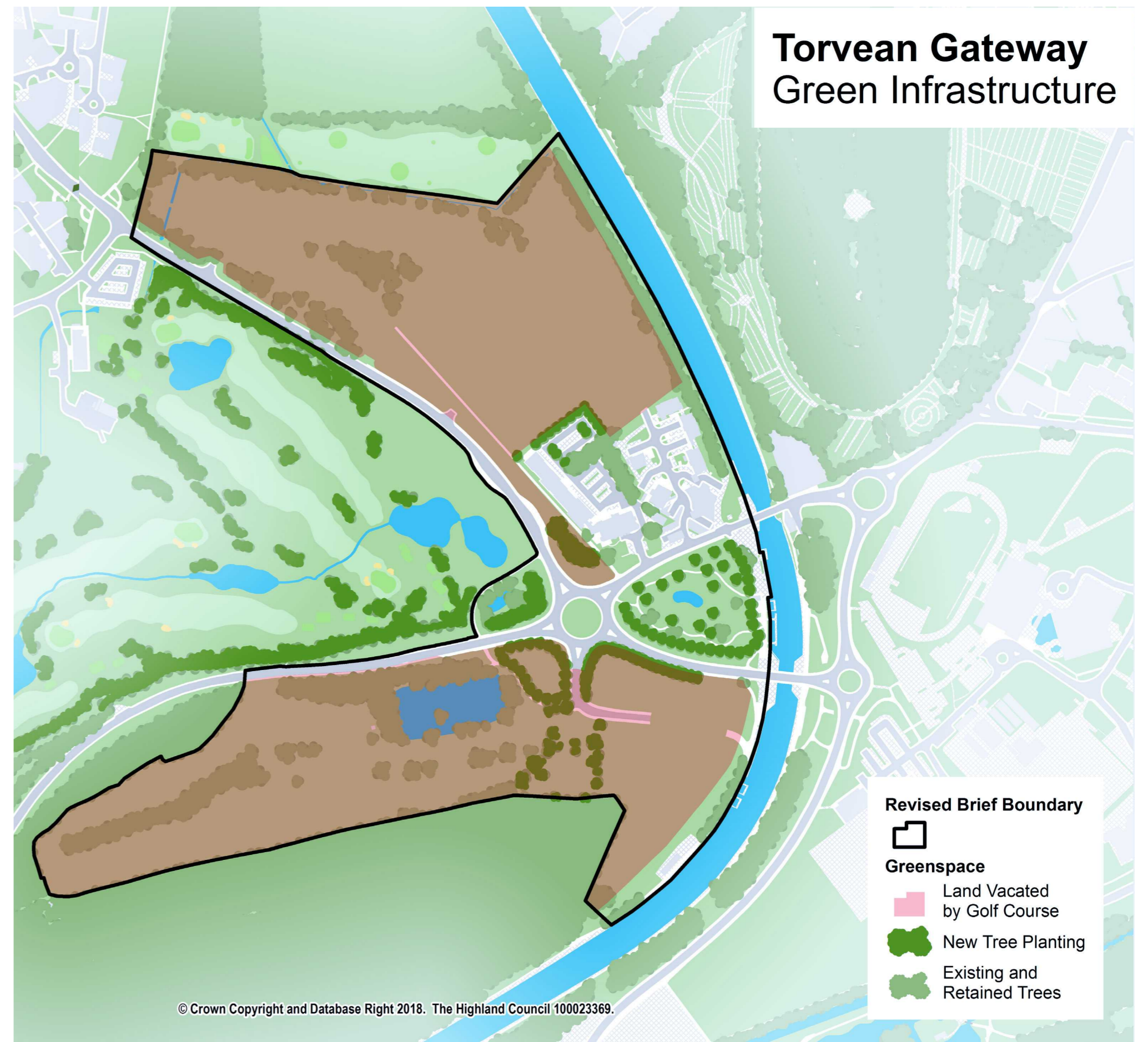
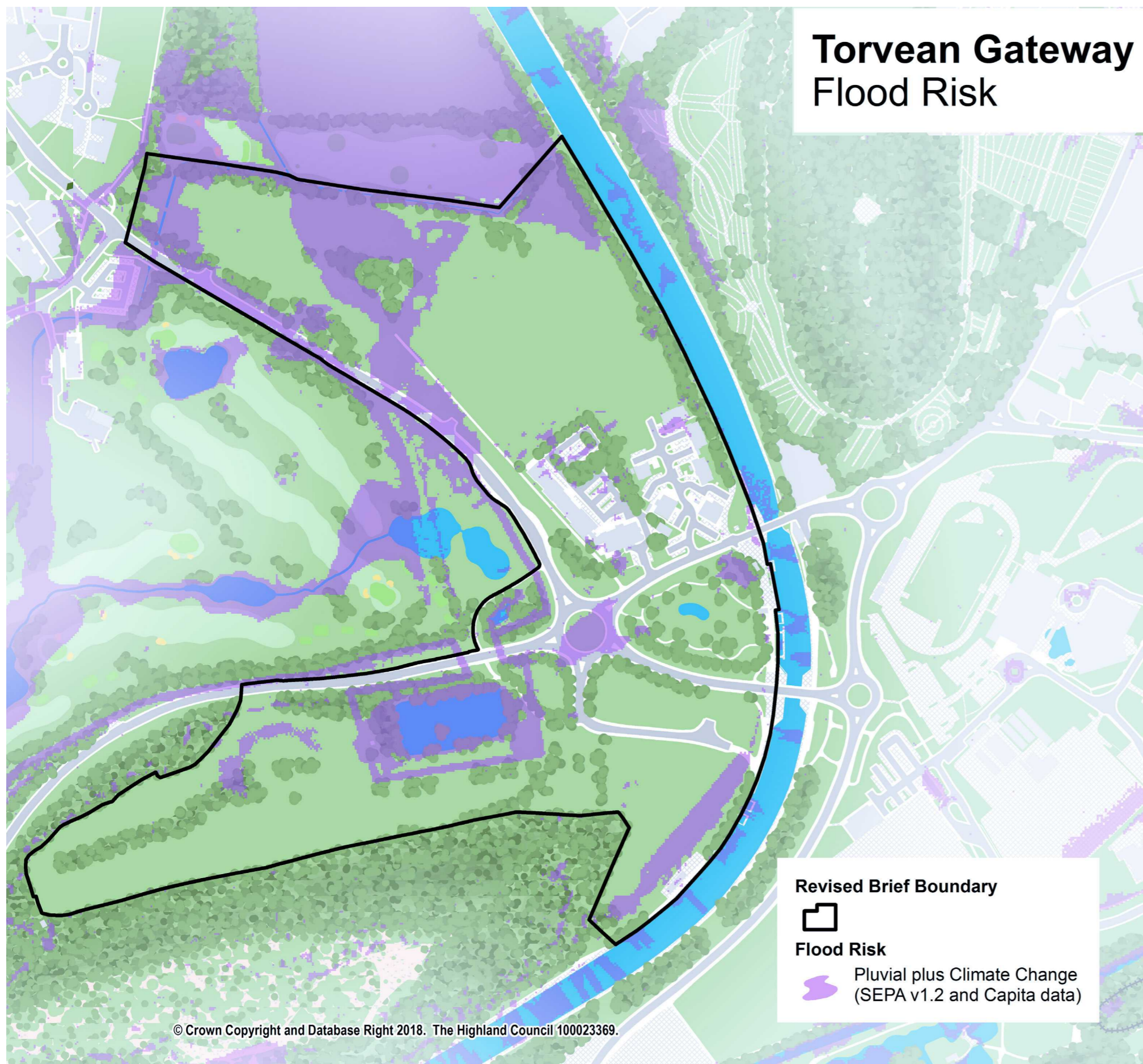
Land to the south of the A82

The land to the south of the A82 is well contained by the A82, Torvean's north-facing slopes and the Caledonian Canal. Its previous use as a golf course could enable part of this land to easily transform into a park. The canal-side location is attractive, well served by pedestrian, cycle and road links and has great potential. This area could be an ideal destination for visitors and locals that serves as a gateway to and from the city and Great Glen.



Your chance to shape the future of this unique area

There are constraints to development, like flood risk, which limit where built development can go, but these also offer opportunities to deliver new greenspaces for the city, that can accommodate solutions to flooding, as well as create new neighbourhood and district resources. The area has a rich green network that we think should be safeguarded and used to define these new parts of Inverness.

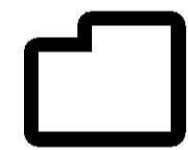


Torvean Gateway Draft Masterplan

Your chance to shape the future of this unique area

- 1 - Canal Control Tower and West Link SUDS
- 2 - Jacobite Cruises Building
- 3 - Consented Caravan Park Redevelopment
- 4 - Premier Inn and Proposed Extension
- 5 - Golf Club
- 6 - Rowing Club

Revised Brief Boundary



Proposed Landuse

- Residential with Potential School
- Commercial
- Hotel
- Canal-side Tourist Accommodation
- Public Open Space
- Park

Proposed Access and Parking

- Parking
- Potential Rowing Club Access
- Shared Path
- Potential Path Connection

