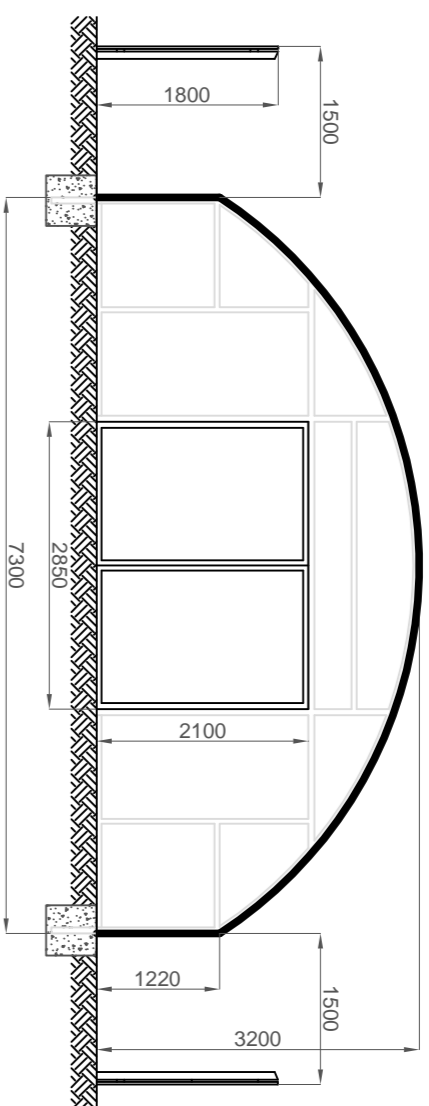
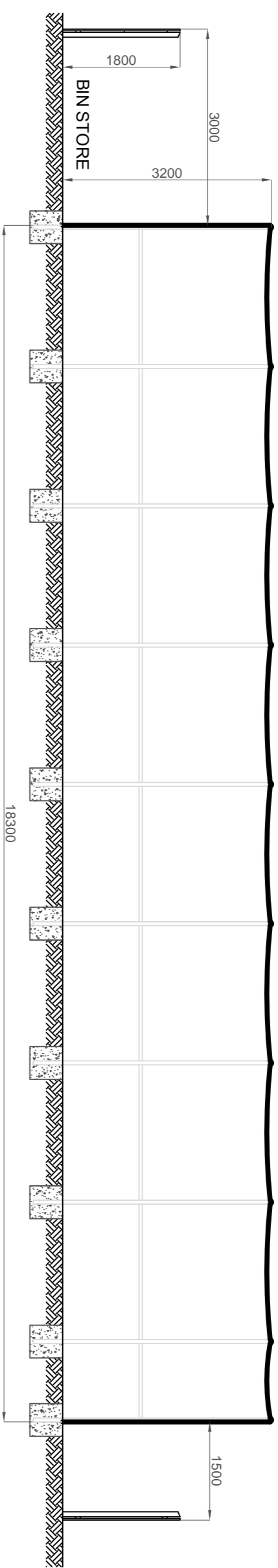


*Seaboard PolyTunnel - As Proposed  
Harbour Green, Balintore, NV20 1TZ*

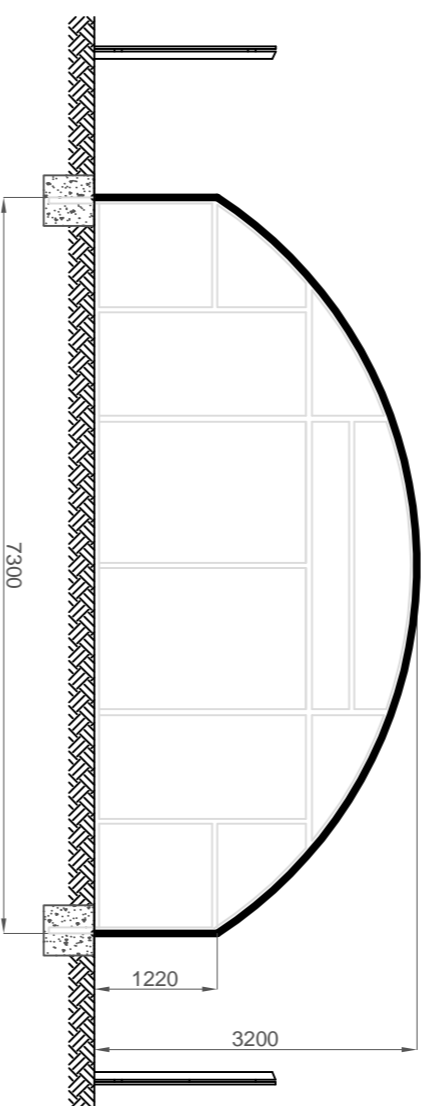
*Dwg No: SeaPoly - 003  
Elevations & Plan*



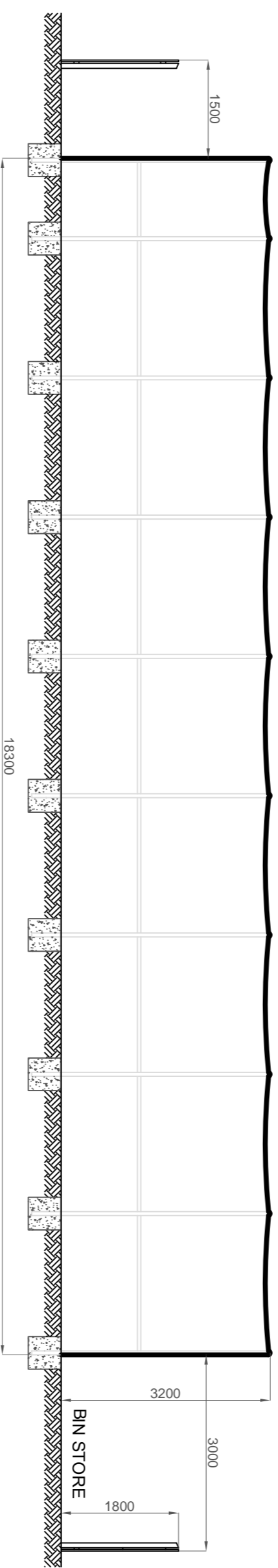
**SOUTH EAST ELEVATION**



**NORTH EAST ELEVATION**

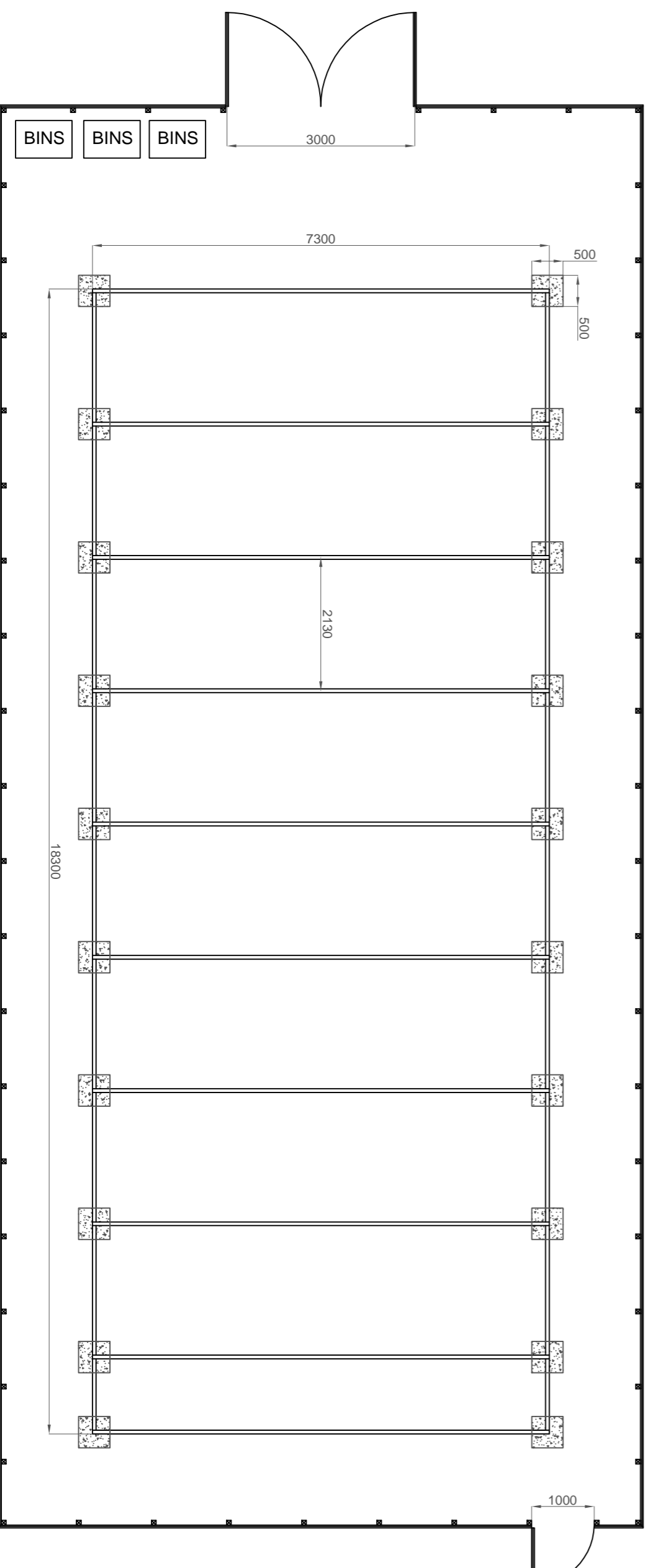


**NORTH WEST ELEVATION**



**SOUTH WEST ELEVATION**

**POLYTUNNEL SUPPLIED  
BY  
NORTHERN POLYTUNNELS  
24 ft x 60 ft ( 7.3 x 18.3 m )  
HOOP SPACING = 2.13 m  
TRADITIONAL FOUNDATIONS  
0.5 x 0.5 x 0.5 m  
TO EACH FRAME BASE  
AS PER MANUFACTURERS  
INSTRUCTIONS**



**PLAN**

**ENCLOSING BOUNDARY FENCE  
1.8m HIGH TIMBER  
POST & BAR WITH  
VERTICAL SLATS  
3m WIDE DOUBLE GATE  
TO SOUTH ELEVATION  
1m PEDESTRIAN GATE  
TO NORTH ELEVATION**

*Drawn by: D J Oliver*

*Scale 1:75 on A2 Sheet*