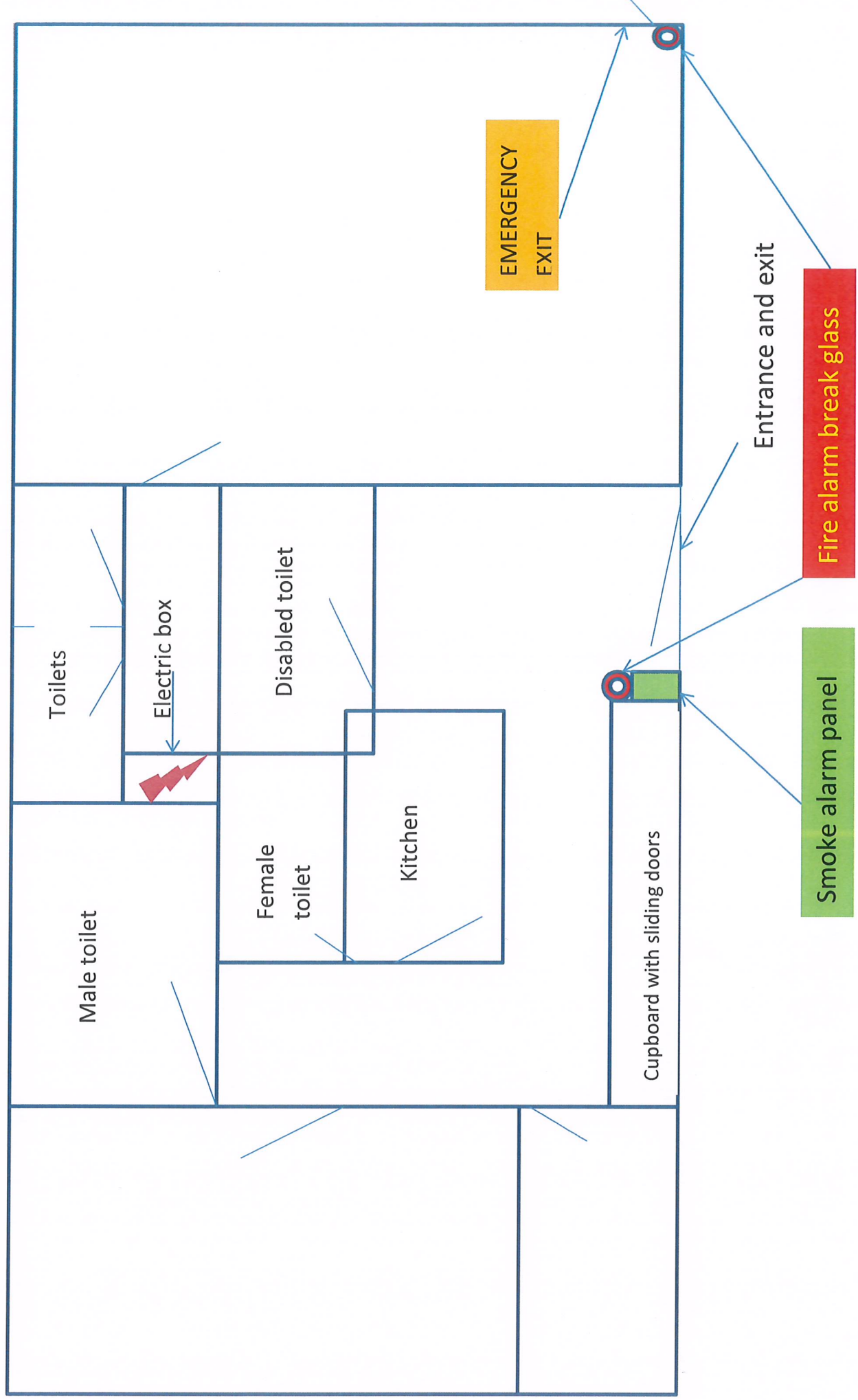
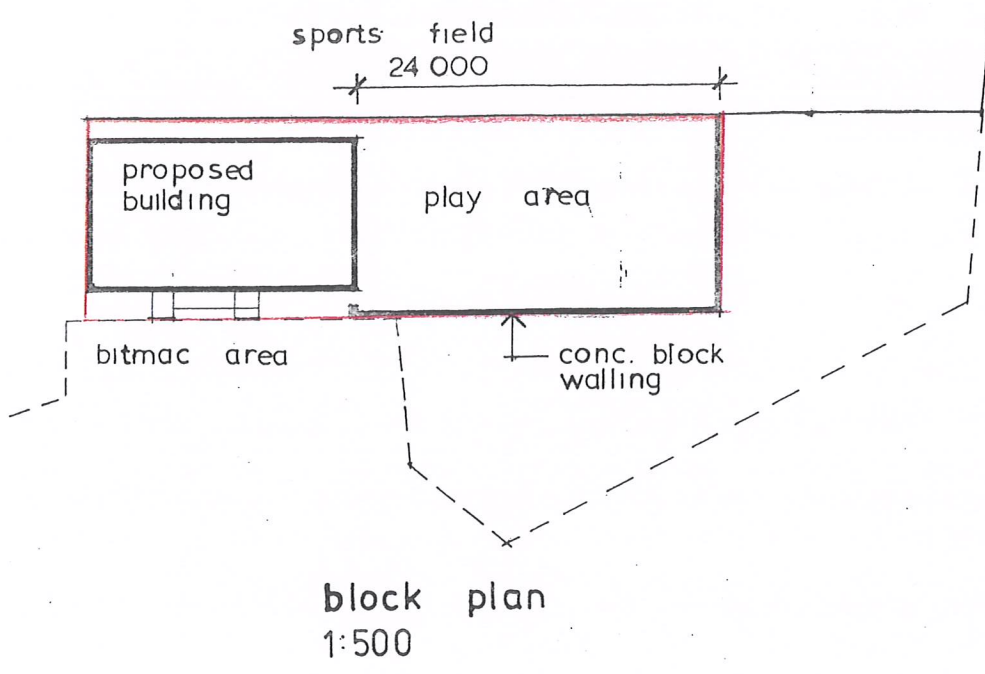
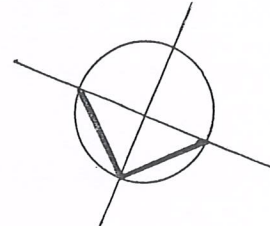
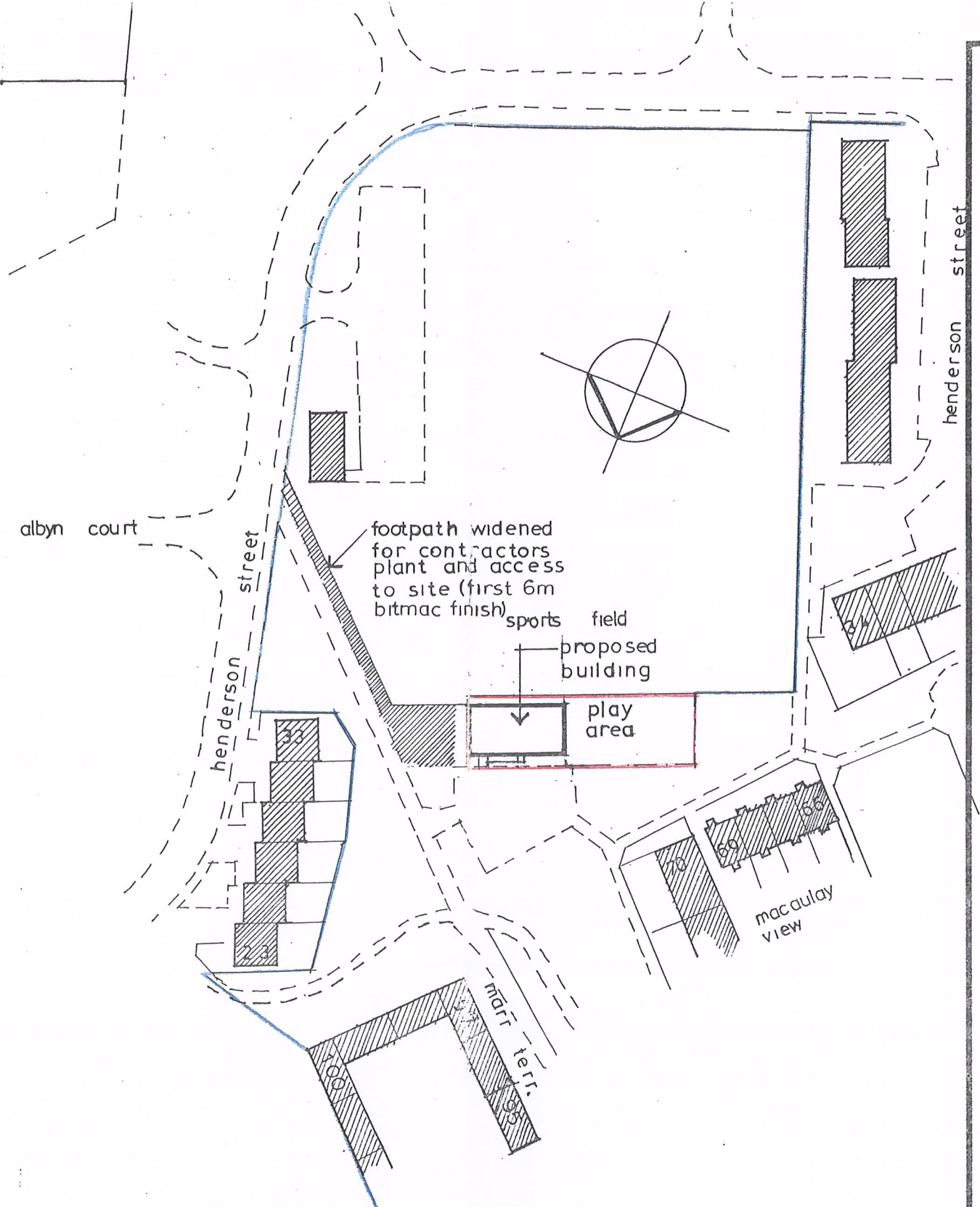


ORMLIE CENTRE FLOOR PLAN



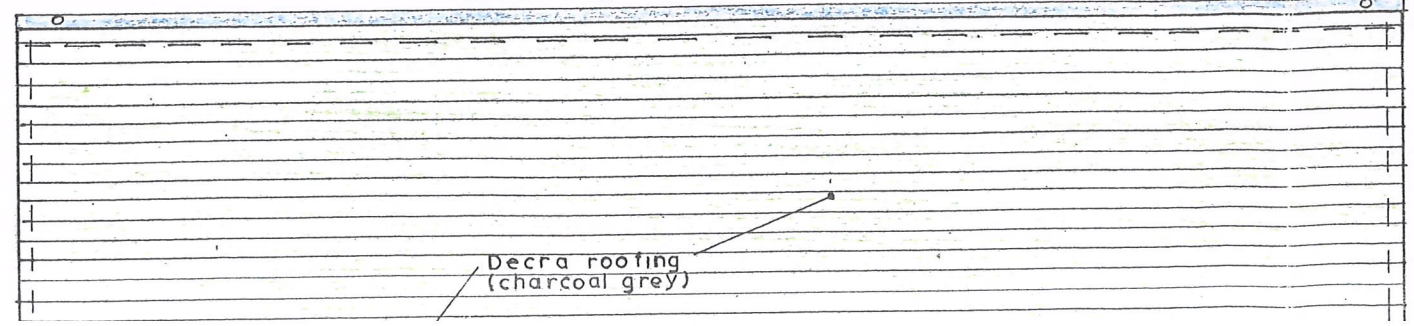


oughcasted conc. block railing around play area



sports field

Marley 'Deepflow' guttering



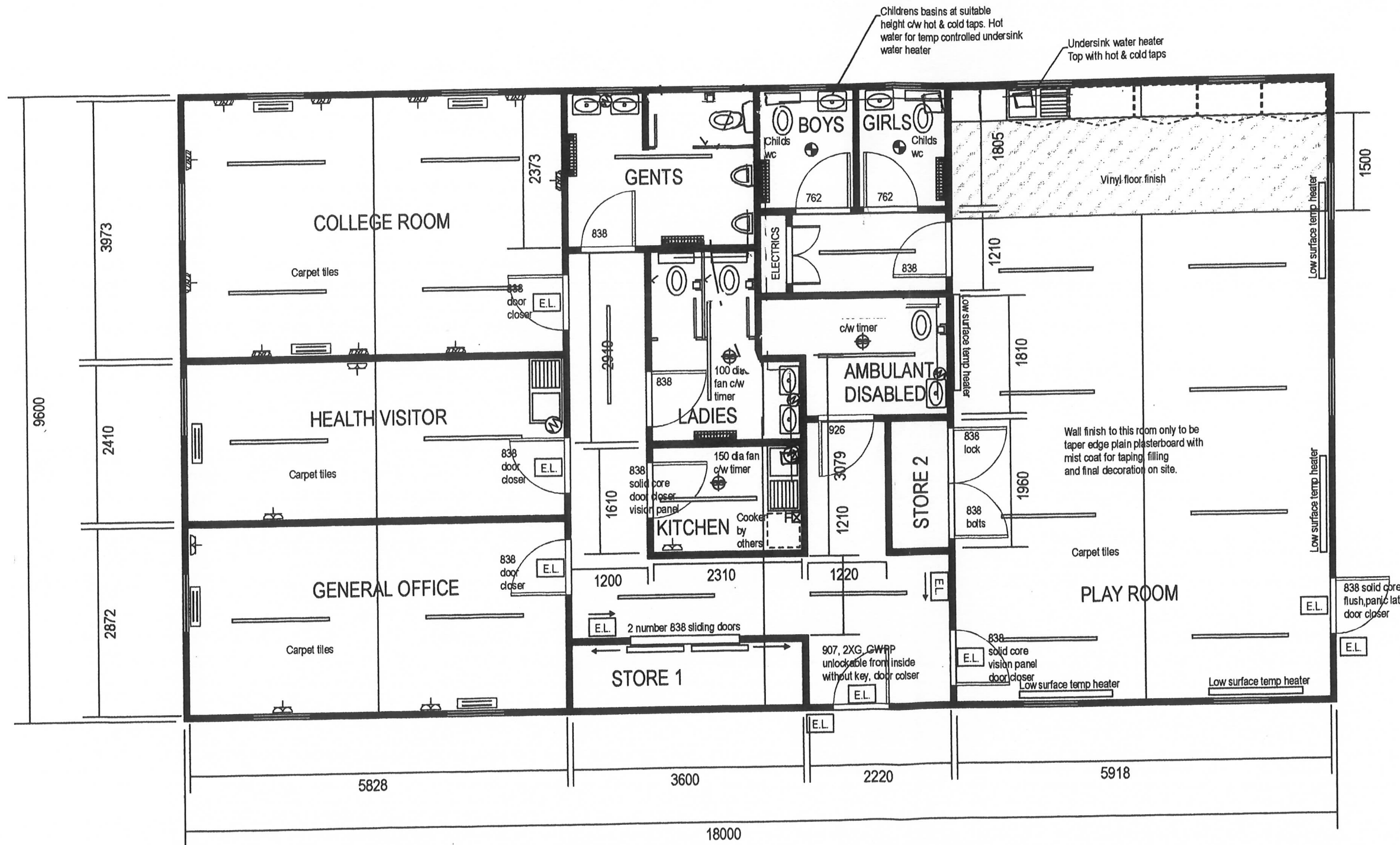
Amendments:

DO NOT SCALE - IF IN DOUBT ASK
 ALL DIMENSIONS ARE NOMINAL AND SUBJECT TO NORMAL MANUFACTURING TOLERANCES
 THIS DRAWING IS NOT A BILL OF QUANTITIES

Notes
 External finish plastisol (Terracotta) from 2.7m sheets
 roof finish Decra Tiles in Charcoal Grey on 30° pitch roof applied on site
 Floor finish Vinyl (Sea Green) except areas noted as Carpet tiles (
 Ceilings white vinyl faced plasterboard
 Walls Cream vinyl faced plasterboard except where noted (Play room)
 Internal trims in Dark Brown vinyl silk
 Internal doors Sapele finish
 External doors Gloss painted white
 Windows 1000w x 1500h with 1000d top hung top vent, UPVC double glazed
 with locking cockspur handles, restrictors and trickle vent, glazed in clear toughened
 glass. All with vertical louvre blinds (Cream) fire retardent material. EXCEPT..

Windows to toilet areas 600w x 400h, fully opening top hung, UPVC double
 glazed with obscure glass, locking cockspur handles, trickle vents.
 All fluorescent lights c/w diffusers
 Socket outlets to College Room at 1000 OFFL
 All internal emergency light fittings to have applicable pictograms
 All toilet area doors to be labelled
 External doors with Duraflex Sills

Geometric Data
 Floor panels 9600mm x 3000mm
 Ceiling Height 2400mm
 Sill height 700mm (1800mm to WC areas)



Childrens basins at suitable height c/w hot & cold taps. Hot water for temp controlled undersink water heater
 Undersink water heater Top with hot & cold taps

PLUMBER NOTE WELL
 REFER TO THE FOUNDATION LAYOUT
 FOR WASTE CONNECTION
 LOCATIONS

SCOTIA KABINS- 6 BAY MODULAR BUILDING - ORMLIE SURESTART PROJECT
 DRAWN BY FAWCETT, APRIL 2001 AT 1:50(A2), ISSUE 0o1.