

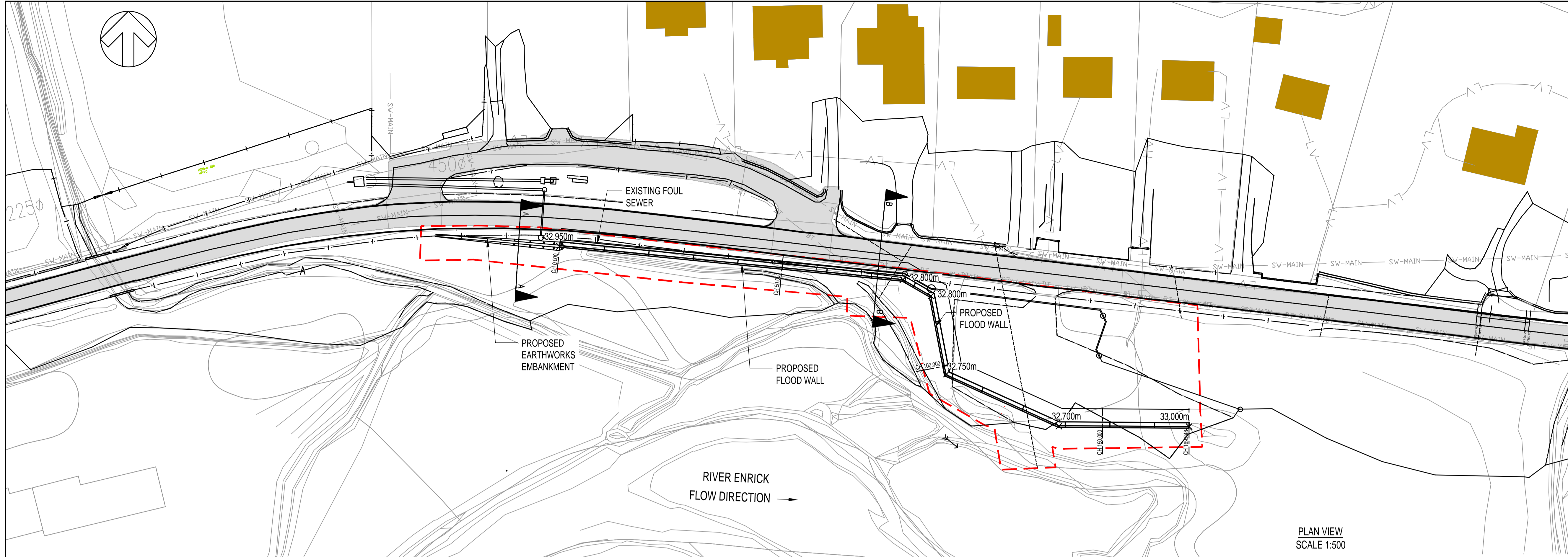
DO NOT SCALE

NOTES:

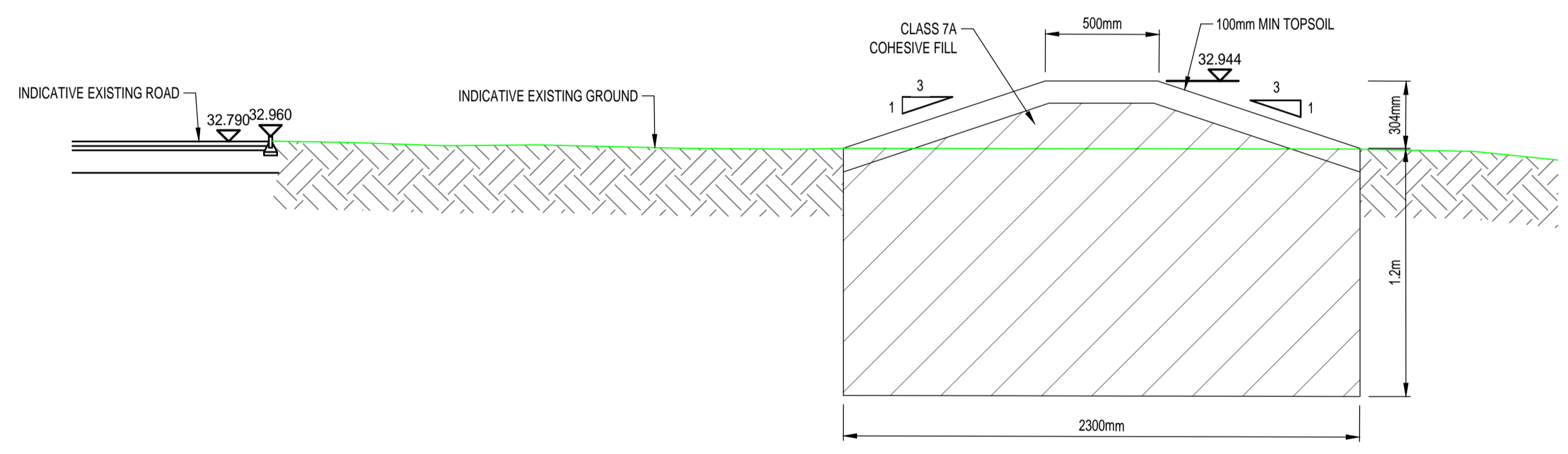
- ALL DIMENSIONS ARE IN METRES UNLESS OTHERWISE STATED.
- FOR TREE CLEARANCE PLAN REFER TO DRAWING 2745-XS-001.

LEGEND

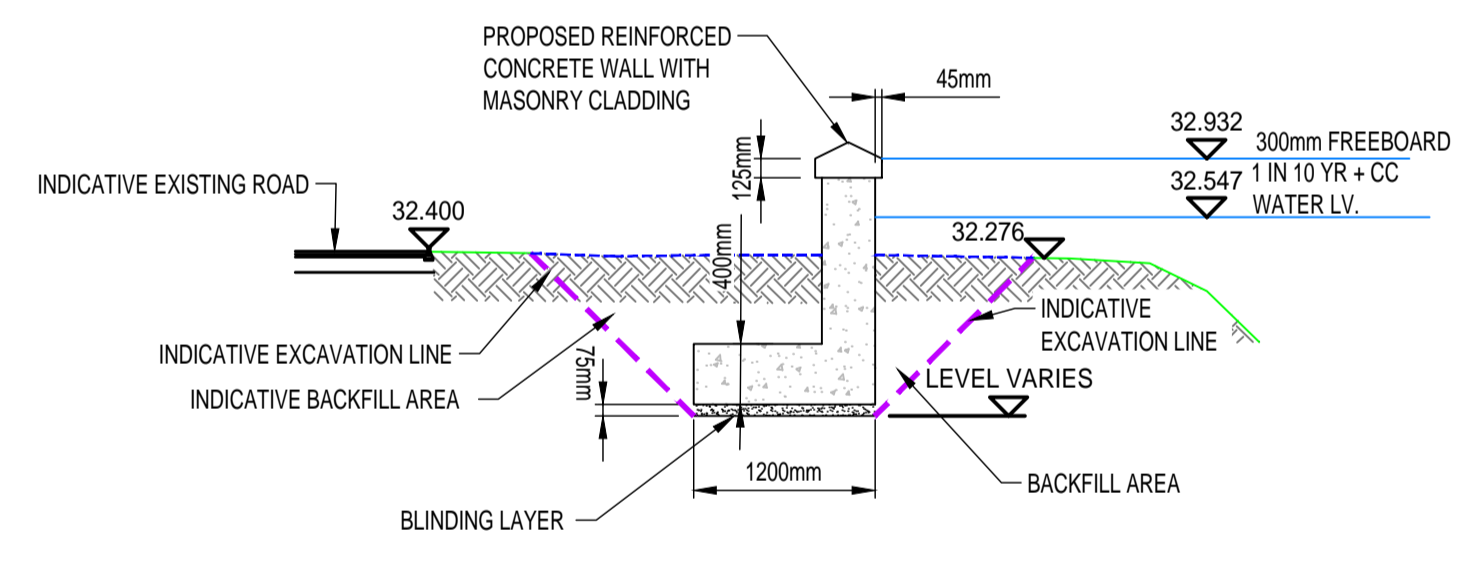
- EXISTING GROUND PROFILE —
- LEVEL OF PROPOSED FLOOD WALL —
- PROPOSED GROUND LEVEL - - -
- LIMIT OF LAND AFFECTED BY OPERATIONS AND OF LAND UPON WHICH ENTRY IS REQUIRED FOR THE PURPOSES OF CARRYING OUT THE OPERATIONS. - - -



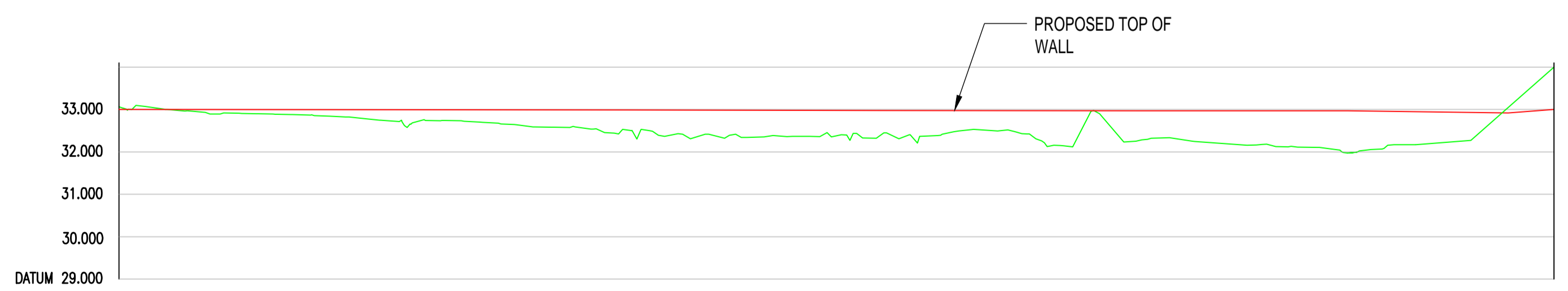
PLAN VIEW
SCALE 1:500



SECTION A-A
SCALE 1:20



SECTION B-B
SCALE 1:50



CHAINAGE	0.000	5.000	10.000	15.000	20.000	25.000	30.000	35.000	40.000	45.000	50.000	55.000	60.000	65.000	70.000	75.000	80.000	85.000	90.000	95.000	100.000	105.000	110.000	115.000	120.000	125.000	130.000	135.000	140.000	145.000	150.000	155.000	160.000	165.000	169.348
EXISTING GROUND LEVEL	33.063	33.015	32.934	32.906	32.884	32.838	32.764	32.706	32.734	32.662	32.586	32.557	32.516	32.389	32.396	32.346	32.364	32.394	32.413	32.370	32.511	32.512	32.145	32.976	32.252	32.303	32.304	32.177	32.109	31.976	32.162	32.171	32.210	32.195	34.000

SECTION ALONG PROPOSED FLOOD
WALL ALIGNMENT
SCALE: H: 1:500, V 1:100

REV	DATE	BY	DESCRIPTION	CHK	APP
F	28/01/19	NA	DRAWING AMENDED TO HIGHLAND COUNCIL COMMENTS	DS	PM
E	09/01/2019	BD	DRAWING UPDATE	DS	PM
D	21/11/2018	MM	DRAWING AMENDED TO HIGHLAND COUNCIL COMMENTS	DS	PM
C	05/11/2018	DS	DRAWING AMENDED TO HIGHLAND COUNCIL COMMENTS	DS	PM
B	26/09/2018	JR	DRAWING UPDATE	PM	PM
A	31/08/2018	JR	FIRST ISSUE	PM	PM

DRAWING STATUS: FOR INFORMATION ONLY

7 Lochside View, Edinburgh Park, Edinburgh, EH12 9DH, UK
T+ 44 (0) 131 344 2300, F+ 44 (0) 131 344 2301
wsp.com

CLIENT: THE HIGHLAND COUNCIL

ARCHITECT:

PROJECT: DRUMNADROCHIT FLOOD PROTECTION SCHEME

TITLE: KILMICHAEL WALL SECTIONS

SCALE @ AT:	CHECKED:	APPROVED:
AS SHOWN	PM	PM

CAD FILE:	DESIGN-DRAWN:	DATE:
2745-GA-005	JN	January 2019

PROJECT No:	DRAWING No:	REV:
70022745	2745-GA-005	F

© WSP Group Ltd

\\UK.WSPGROUP.COM\CENTRAL DATA\PROJECTS\70022745 - DRUMNADROCHIT FLOOD SCHEME\DEVELOPMENT\AUTOCAD\GA GENERAL ARRANGEMENT\2745-GA-005.DWG 01/03/2019 12:02:53 Dempster, Ben

Reproduced from the Ordnance Survey map with the permission of the Controller of Her Majesty's Stationery Office. Licence no. 100048735. Crown copyright reserved.