

# THE HIGHLAND COUNCIL

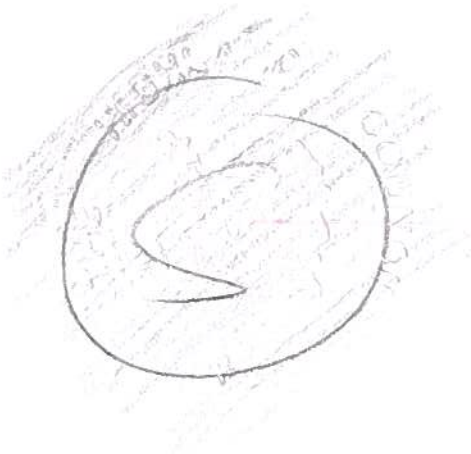
## ORDER TO EXEMPT LAND FROM ACCESS RIGHTS

### THE HIGHLAND COUNCIL (MOUNTAIN BIKE WORLD CUP EVENT) ORDER 2019

The Highland Council in exercise of the powers conferred on them by Section 11 (1) of the Land Reform (Scotland) Act 2003 ("the Act") hereby make the following Order:-

1. This Order may be cited as "The Highland Council (Mountain Bike World Cup Event) Order 2019", and shall come into operation at 0800hrs on Thursday 30 May 2019 until 2000hrs on Sunday 2 June 2019 unless revoked earlier.
2. The Interpretation Act 1978 shall apply for the interpretation of this Order as it applies for the interpretation of an Act of Parliament.
3. The effect of the Order is to exempt land, namely the DH Track, 4X Course, Trials Areas, Car Parks and Nevis Range Curtilage at the Nevis Range, Fort William shown delineated in red on the plan annexed and signed as relative to this Order, from the access rights which would otherwise be exercisable in respect of that land by virtue of Part 1 of the Act. Rights of way are not affected by this Order.

Sealed with the Common Seal of The Highland Council and subscribed for them and on their behalf by Karen Lyons, Proper Officer, at Inverness on the Fifteenth day of April Two thousand and nineteen.



*K Lyons*

Stewart D. Fraser  
Head of Corporate Governance  
The Highland Council  
Glenurquhart Road  
INVERNESS  
IV3 5NX

THE HIGHLAND COUNCIL

ORDER TO EXEMPT LAND FROM ACCESS RIGHTS  
THE HIGHLAND COUNCIL (MOUNTAIN BIKE WORLD CUP EVENT)  
ORDER 2019

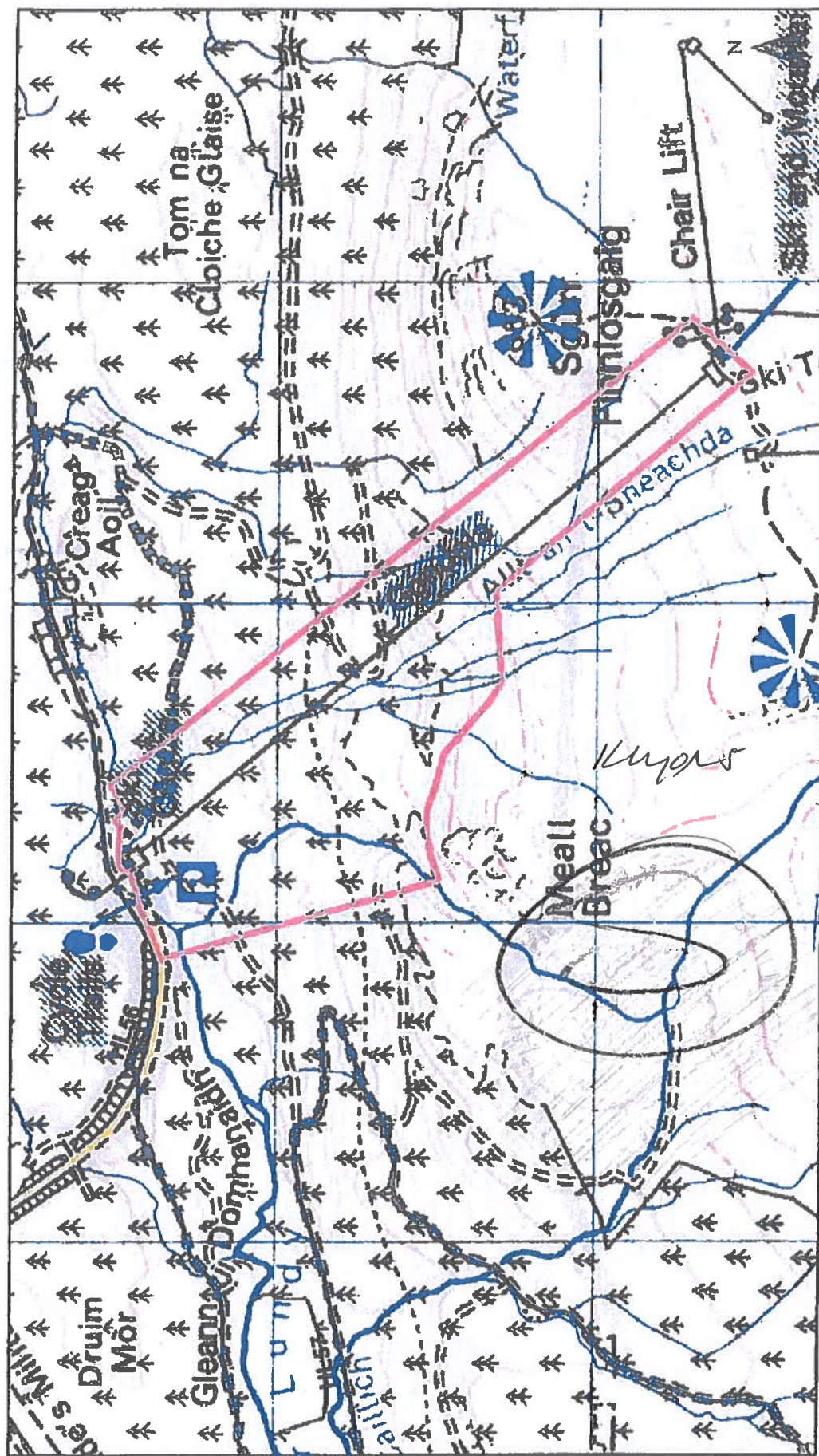
STATEMENT OF REASONS

It is considered appropriate to exempt the land stated in the above proposed Order in the interests of safety, security and to allow an admission charge to be levied.



*Kyons*

This is the plan referred to in the foregoing The Highland Council (Mountain Bike World Cup Event) Order 2019



### World Cup Exclusion Area

Catalogued Right of Way

Diversion to HL56

World Cup Exclusion Area

The Highland Council



Comhairle na Gàidhealtachd  
Serving The Highland Community

Scale: 1:16,717

0 0.1 0.2 0.3 0.4  
Kilometres

Reproduced from the Ordnance Survey Mapping with the permission of the Controller of Her Majesty's Stationary Office. © Crown Copyright. Unauthorised reproduction infringes Crown Copyright and may lead to prosecution or civil proceedings. The Highland Council 100025368.