



Inverness West Link Stage 2



Community Liaison Meeting

3rd June 2019





CAPITA

History and Background



Established Scottish Company

- Founded in 1951 – Roderick John MacLeod
- Offices Glasgow & Dingwall
- Compact management structure
- Turnover £100/£150m
- Strong financially secure
- Good supply chain relationships





CAPITA

'In-house' Resources & Capabilities



Comprehensive in-house capabilities

- 450 employees
- 175 long term experienced staff
- 275 trained operatives
- £13m fleet of modern plant
- Fully accredited to current standards
 - Health & Safety – BS OHSAS 18001
 - Quality management – ISO 9001
 - Environmental – ISO 14001
 - Energy management – ISO 50001





CAPITA

Markets



Broad spectrum of civil engineering projects

- Site infrastructure & services
- Roads & bridges
- Energy/electricity
- Streetscape
- Marine works
- Building





CAPITA

Infrastructure Works & Experience



Local Roads, Infrastructure, Bridge and Canal projects completed:

Recent Road and Infrastructure Works

- B9091 Clephanton Bends, Inverness (2017) - Highland Council - £0.56M
- B862 Stronelairg Off Site Roads, Fort Augustus (2017) - SSE - £2.70M
- B851 Sockich Bends, Inverness (2015) - Highland Council - £1.54M
- A82 Crianlarich Bypass (2015) - Transport Scotland - £5.05M
- Inverness Flood Prevention Ph4 (2012) – Highland Council - £5.68M

Recent Bridge and Canal Works

- B9090 White Bridge, Inverness, (2019) – Highland Council - £2.3M
- Roo Emah Road Bridge, (2018) Aberdeenshire Council - £0.6M
- Dochgarroch Jetty, Inverness (2018) - Jacobite Cruises - £0.4M
- Caledonian Canal Repairs (2006) - Scottish Canals - £0.6M



Chapel Level road & roundabout construction



A77 Whittlets Roundabout



Landlands West



Newton Farm Road Works



Clephanton Bends Road Construction



Wester Cowden Roundabout, Dalkeith



Chapel Level dual carriageway construction



M876 Glenbervle Slip Roads and roundabout construction



A82 Crafnalrich bypass road construction



A77 Symington Road and bridge construction



A77 Structure Transportation



Amurlee Bridge Replacement



Bund and cut off piling In operational Macduff harbour



Caledonian Canal cut off using bund and sheet pile wall for dewatering



Tillynaught Bridge Construction



A75 Dunragit Bypass Bridge construction



Macduff harbour bund & piling cut off wall



KyleakIn pier concrete edge beam construction



Tillynaught Bridge Construction



Inverness Flood Channel box culvert construction including management of services



Inverness Flood Channel geotextiles and seeding



Ullapool Linkspan construction in operational Harbour



Scrabster Harbour bund construction



Dochgarroch quay and jetty construction



Dochgarroch quay and jetty construction

This submission has been prepared in response to the Methodology Quality Statement Section of the Inverness West Link Stage 2. The photographs highlight pictorial examples of our experienced proposed methodology for key construction elements. The photos have been selected from our previous experience on similar project and with similar elements of work. This specific key experience and lessons learned will be utilised for the works on this project.

DATE	ISS	DESIGNED	APP	APPROVED	APRD	REVISION					
01	March 2016	02	March 2016	03	March 2016						
SCALE	N1'S @ A3		TYPE	Tender		PROJECT NO.	8806	DRAWING NO.	004		

RJ McLEOD
 RJ McLEOD (CONTRACTORS) LTD.
 10th, Broomfield & Broomfield, Inverness
 Tel: 01463 222222 Fax: 01463 222222
 Email: info@rjmcLeod.co.uk

CLIENT: The Highland Council
 PROJECT: Inverness West Link Stage 2
 ELEMENT: Previous Experience Methodology



CAPITA

Key Elements



- **Utilities** – diversion or protection
- **Community Interaction** – residents, schools, businesses, public transport etc.
- **Traffic Management**
- Earthworks
- Swing Bridge & Canal Works
- Drainage and services
- Kerbing & surfacing
- Signage & lining
- SUDS/swales
- Landscaping





CAPITA

Methodology



Comprehensive Preparation

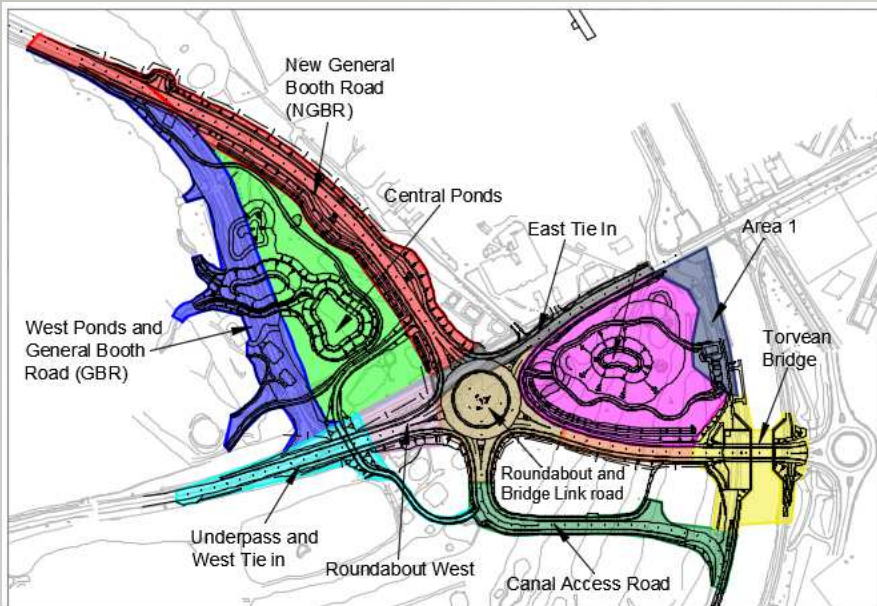
- Critical activities identified – Traffic Management & Canal Works.
- Assess project risks and develop mitigation plans.
- RAMS prepared for all major activities.
- Works progressed in logical sequence using adequate plant & resources.
- Continual review – programme, weekly meeting, progress meetings, etc.

Key to project success = **Planning, Control, Communication**

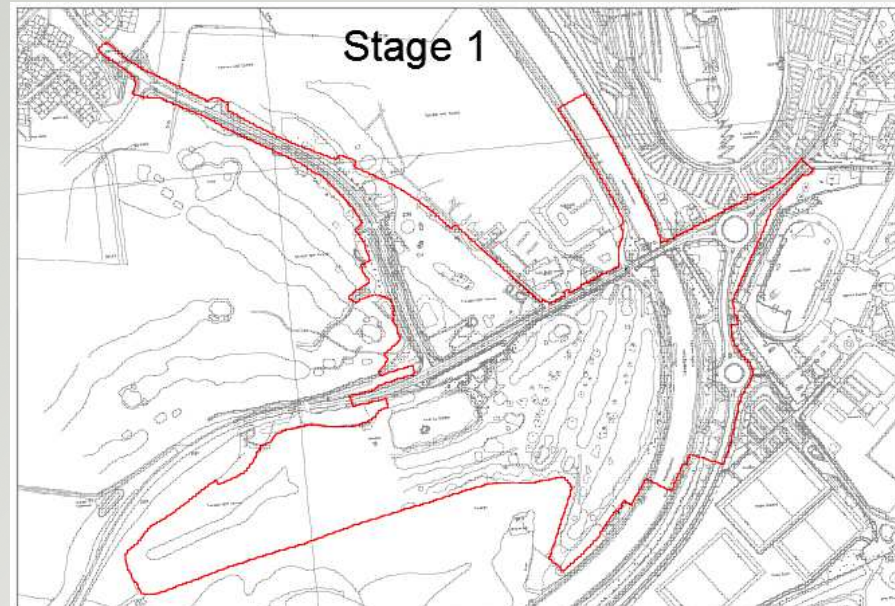


CAPITA

Stage 1



Construction Area Phasing Key

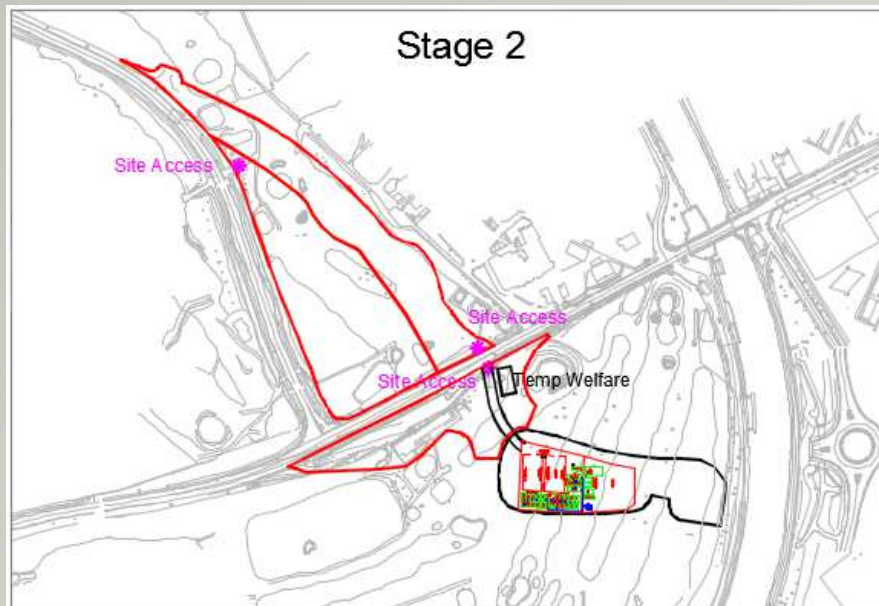


- Planning Condition Discharge
- Contractor Design elements
- Long Lead Item Procurement
- Production of RAMS
- Licence and permit acquisition
- Ecological studies
- Public Exhibition/PR/Community Liaison Group
- Commencement of Temporary Service Diversions

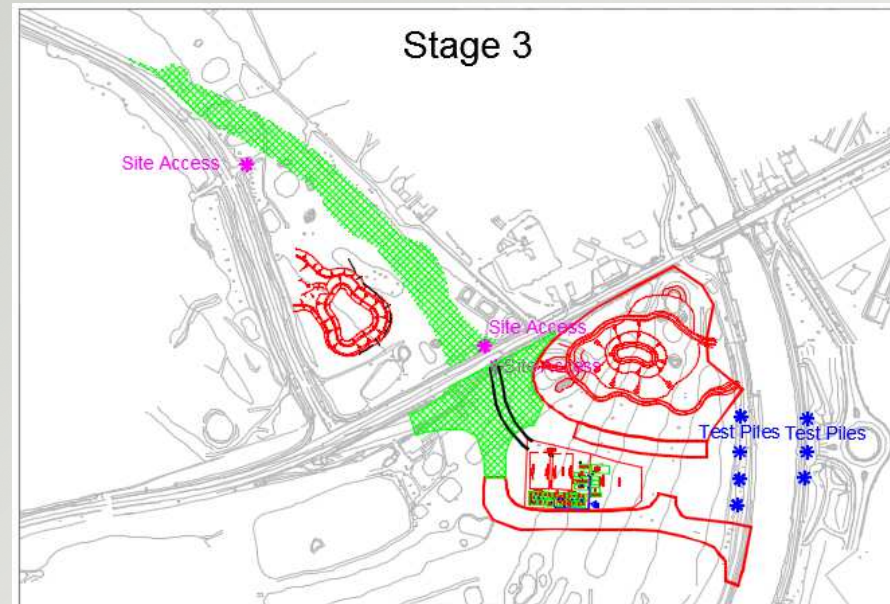


CAPITA

Stages 2 & 3



- Mobilisation to Site (temp welfare provided until main compound formed)
- Temporary fencing around trees & Env measures installation
- Creation of access, site compound and office complex
- Site Clearance of New General Booth Road and Roundabout
- Completion of temporary BT and SSE ducts
- Golf club house site clearance/ demolition

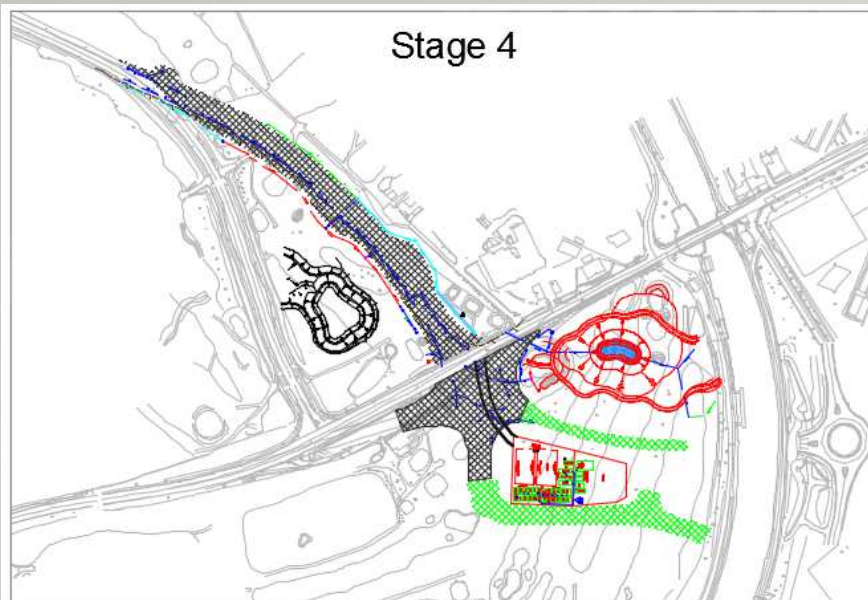


- Site Clearance of East Suds pond and canal link road
- Excavation of central Suds pond
- Place carriageway formation and bulk fill to General Booth Road and roundabout
- Carry out Test Piles installation

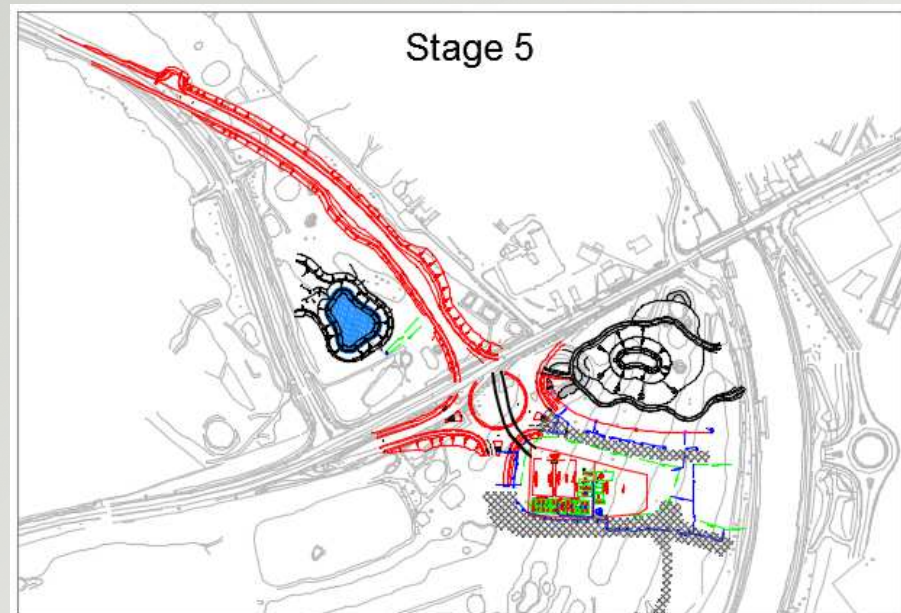


CAPITA

Stage 4 & 5



- Drainage installation to General Booth Road and roundabout
- Service installation General Booth Road and roundabout - Gas, BT, City Fibre & Street lighting
- Excavation of East SUDS pond and place carriageway formation and bulk fill to Bridge & Canal Link Road
- Formation of East and central Suds pond

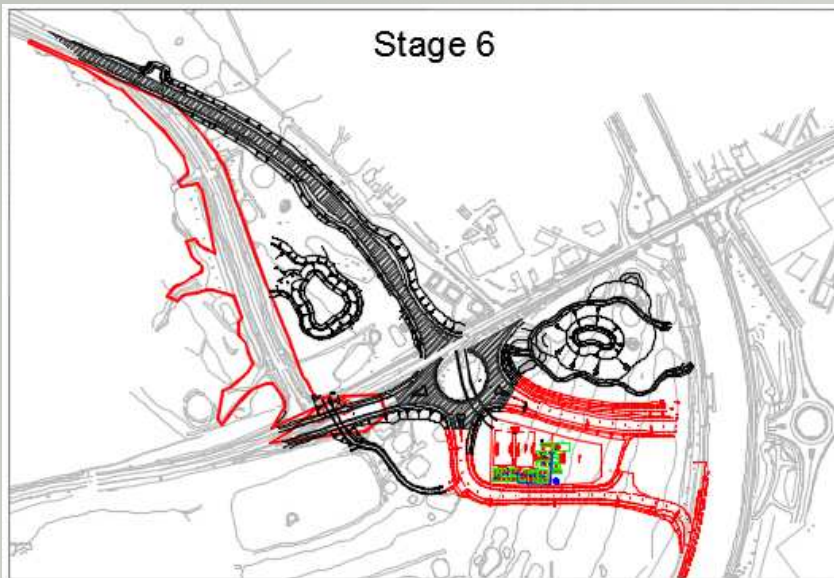


- Kerbing New General Booth Road and roundabout
- General Booth Road tie in construction
- Surfacing General Booth Road
- Drainage & Service installation to Bridge and Canal link - SSE, Gas & BT
- Rowing Club Temp Car Park



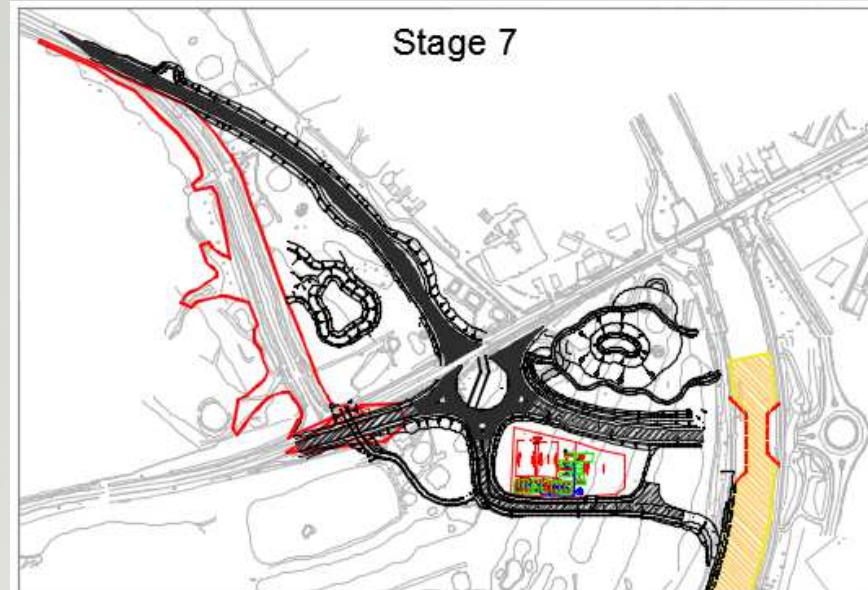
CAPITA

Stage 6 & 7



Stage 6

- Switch Traffic to new General Booth Road
- Site clearance General Booth Road
- Form temporary A82 diversion to accommodate underpass construction
- Excavate for Torvean Underpass
- Kerbing Bridge and Canal Link roads
- Install compensatory overpumping for canal
- Pre canal closure warf piling



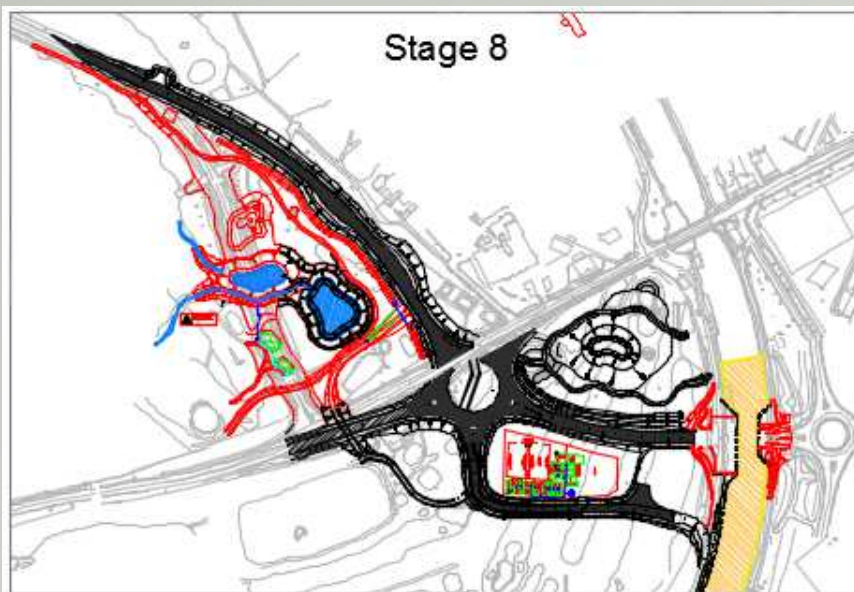
Stage 7

- Surfacing of Bridge and Canal Link Roads
- Placing of formation to roundabout and west roundabout
- Drainage installation to roundabout and west roundabout
- A82 traffic to use temporary diversion
- Torvean Underpass installation
- Canal Closure
- Install cut off dam/walls across canal and pile abutment walls
- Install warf concrete edge beams

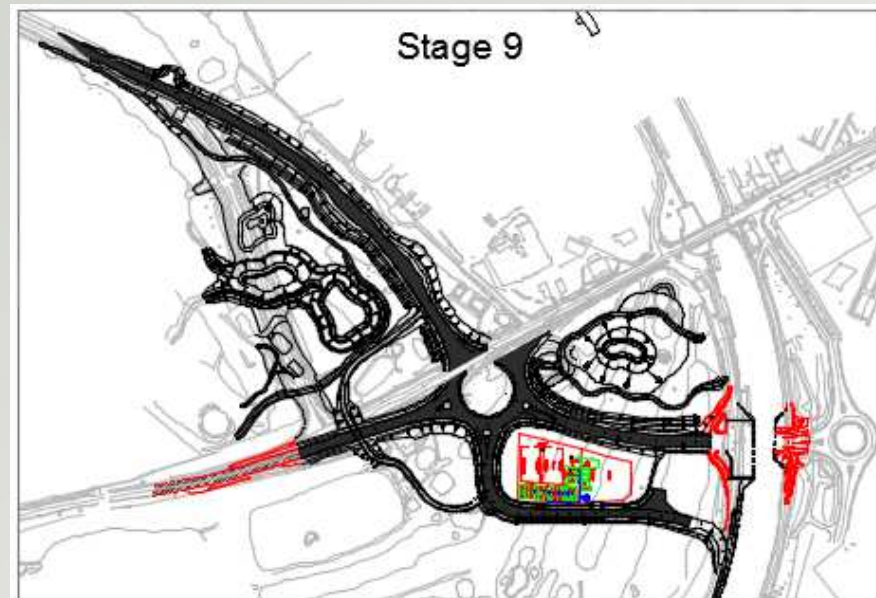


CAPITA

Stage 8 & 9



- Form west ponds and associated drainage
- Completion of underpass construction
- Install Jetty
- Install abutment concrete edge beams beam and pile new jetty
- Install canal invert Slab and ducts
- Install Canal Scour protection
- On completion, refill canal and remove cut off walls
- Canal Open

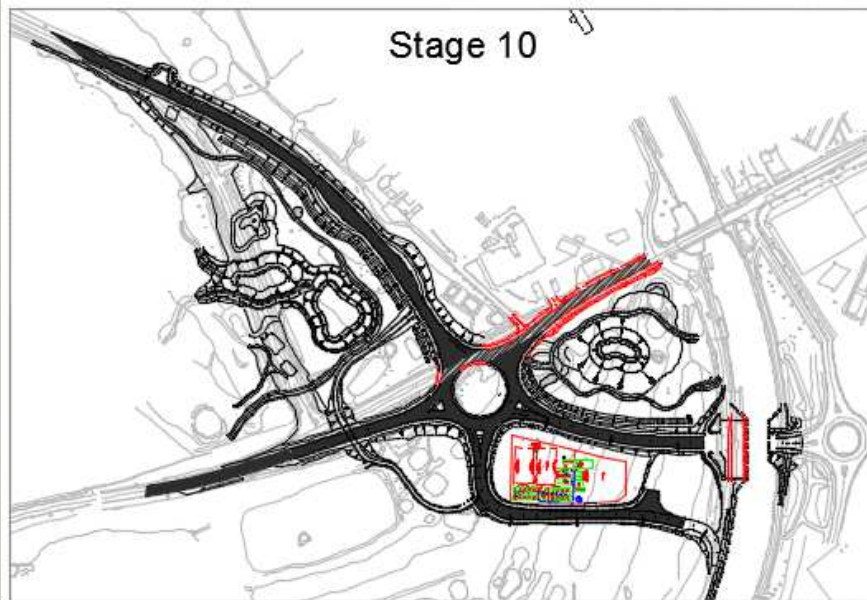


- Complete west tie in - kerbing drainage and surfacing
- Complete Bridge Link road tie ins - drainage, kerbing and surfacing
- Completion of warf and abutment concrete slabs and approach tie ins

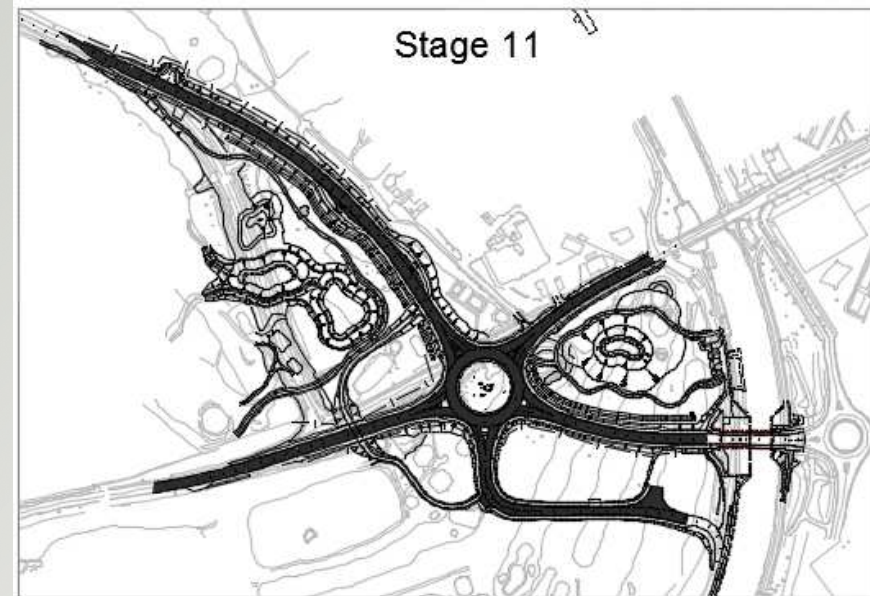


CAPITA

Stage 10 & 11



- Kerbing and drainage of East Tie in and northern roundabout
- Surfacing East Tie in and northern roundabout
- Bridge delivery and fabrication on site



- Site Tidy & final landscaping
- M&E fit out
- Bridge wigwags and control infrastructure
- Swing Bridge commissioning
- Site demobilisation



CAPITA

Community Interaction / Benefit



Community Interaction

- Employment - local company employing local people and using local suppliers and subcontractors
- Liaison with businesses, organisations, schools, community councils, stakeholders
- Work Experience - Student Engineer on work placement
- Construction Careers Information, Advice & Guidance
- Training
- Community sponsorship & support – Rowing Club, Park Run, Cycling without Age, Hockey, Highland Cross, Golf Course, ICE – Bridge building in local schools
- Newsletters, open meeting

Contact Details

- ✓ Community Liaison contact
- ✓ THC Website





CAPITA

Questions



Any Questions?