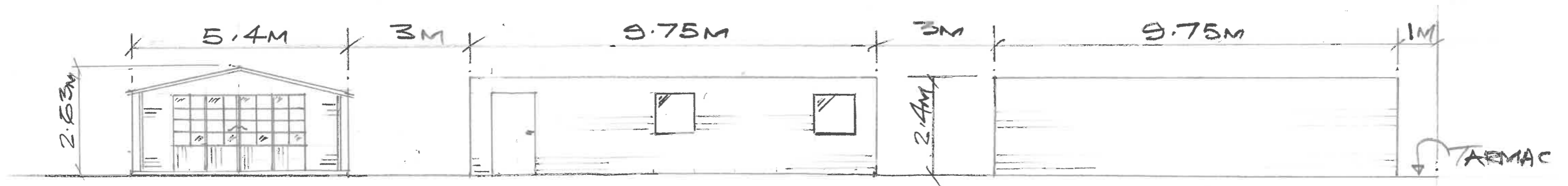


23M TARMAC.

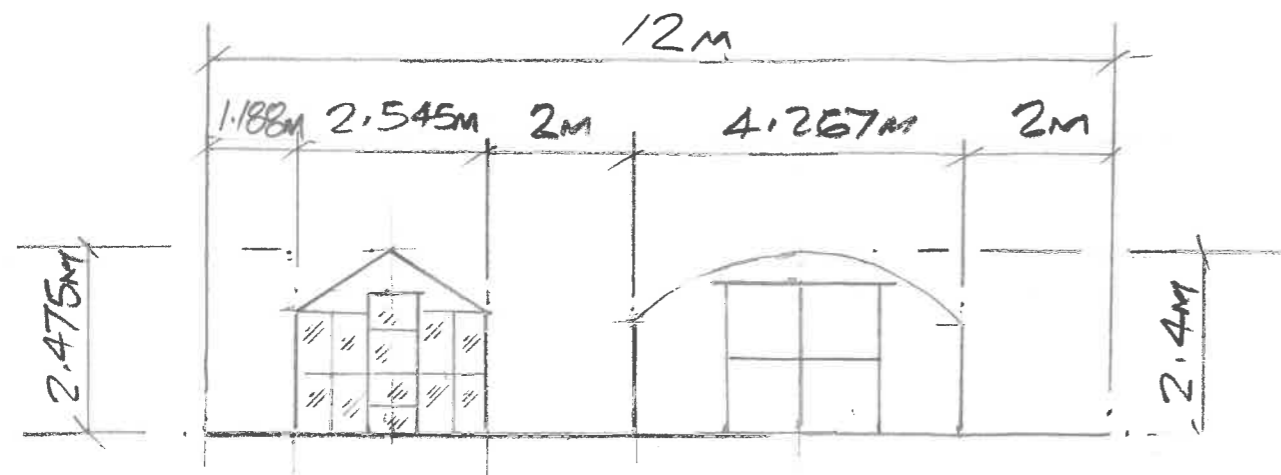


STEEL CONTAINERS
WILL BE CLAD WITH
WOOD & EVENTUALLY
HAVE A GREEN ROOF
OF FLOWERS (WILD)

VIEW ON 'A-A'



VIEW ON 'B-B'



VIEW ON 'C-C'

SCALE :- 1:100

DINGWALL MON'S SHED - PROPOSED LAYOUT
OF BUILDINGS AT SKATE PARK DINGWALL

DRN BY:- JW DATE:- 5/8/19

DRG N°:- DMS-002 REV 0