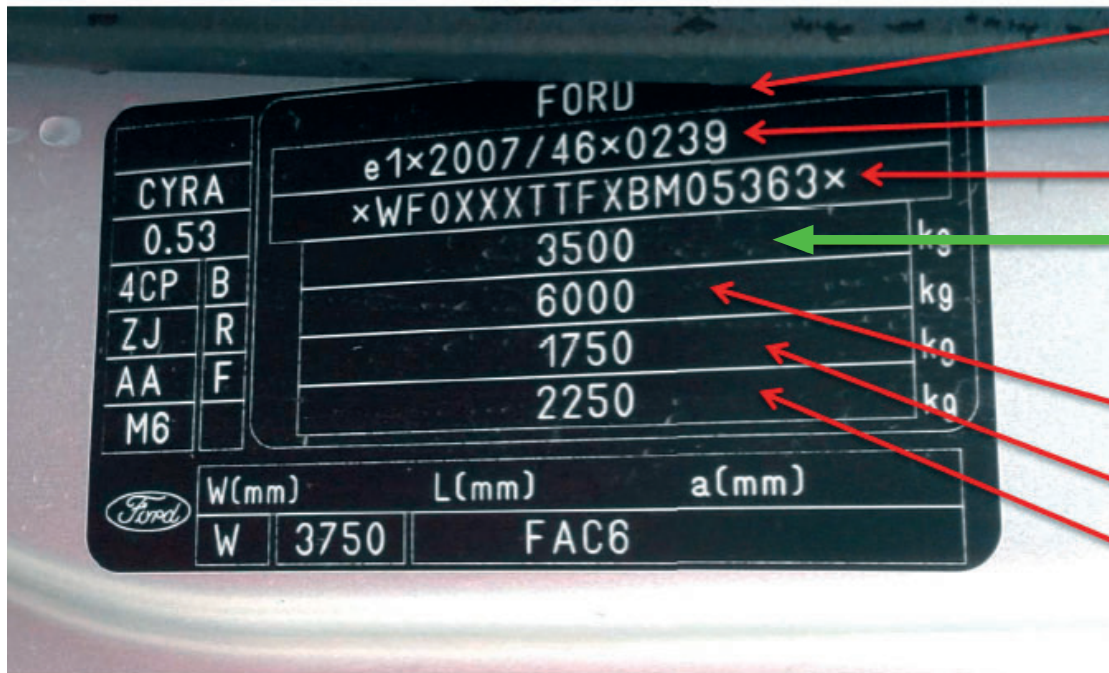


## How to Identify the Maximum Gross Vehicle Weight from the Manufacturer's Identification Plate

1. The picture below shows an example of a vehicle identification plate that will be found on any light commercial vehicle.
2. Vehicle identification plates must be fitted to vans by law and are normally found either under the bonnet or in the frame of the driver or passenger door.
3. This example shows a vehicle with a maximum gross weight of 3500kg and therefore would not be permitted to use the household waste recycling site after 1/2/2020.

(Further information can be found in the Best Practice Guide Interpreting Weight Plates for Light Commercial Vehicles, produced by East Sussex Council, August 2012)



Manufacturer's name

Whole vehicle EEC or national type approval number (if any)

Vehicle identification number

**Maximum Gross Vehicle Weight**  
**This must be less than 3500 kg to be permitted on site.**

Maximum train weight for vehicles designed to tow a trailer

Maximum axle weight (front axle)

Maximum axle weight (rear axle)