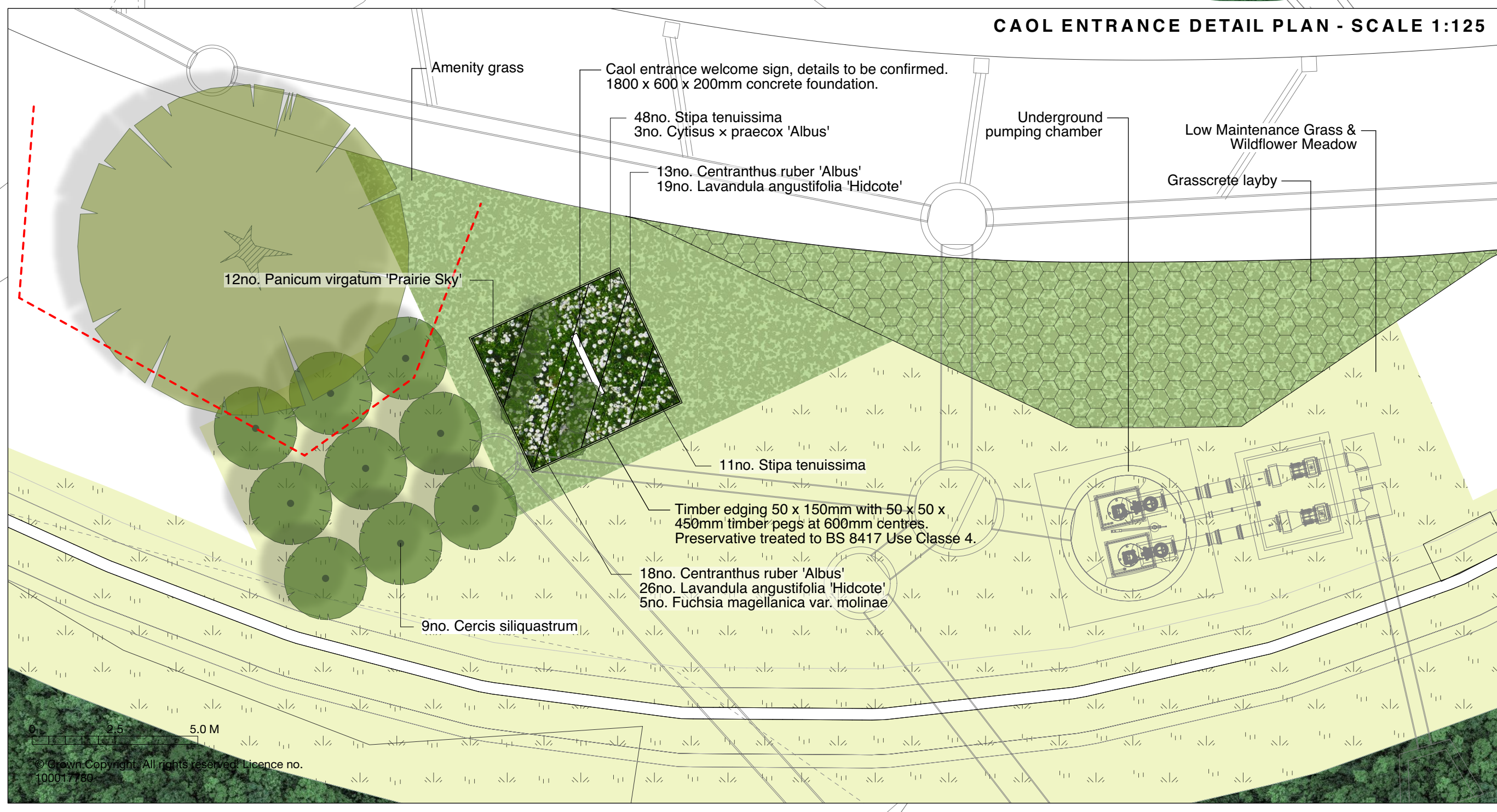
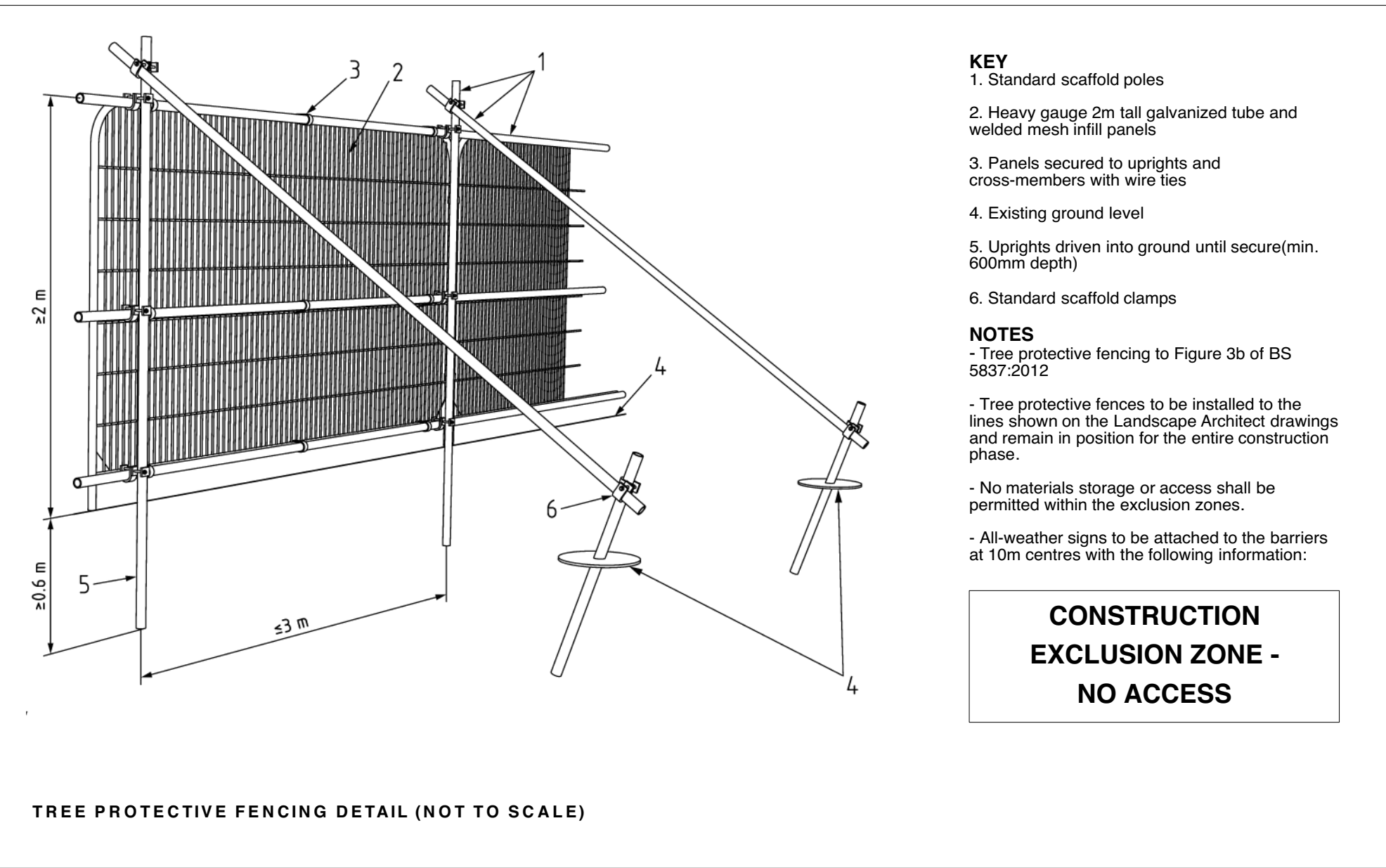
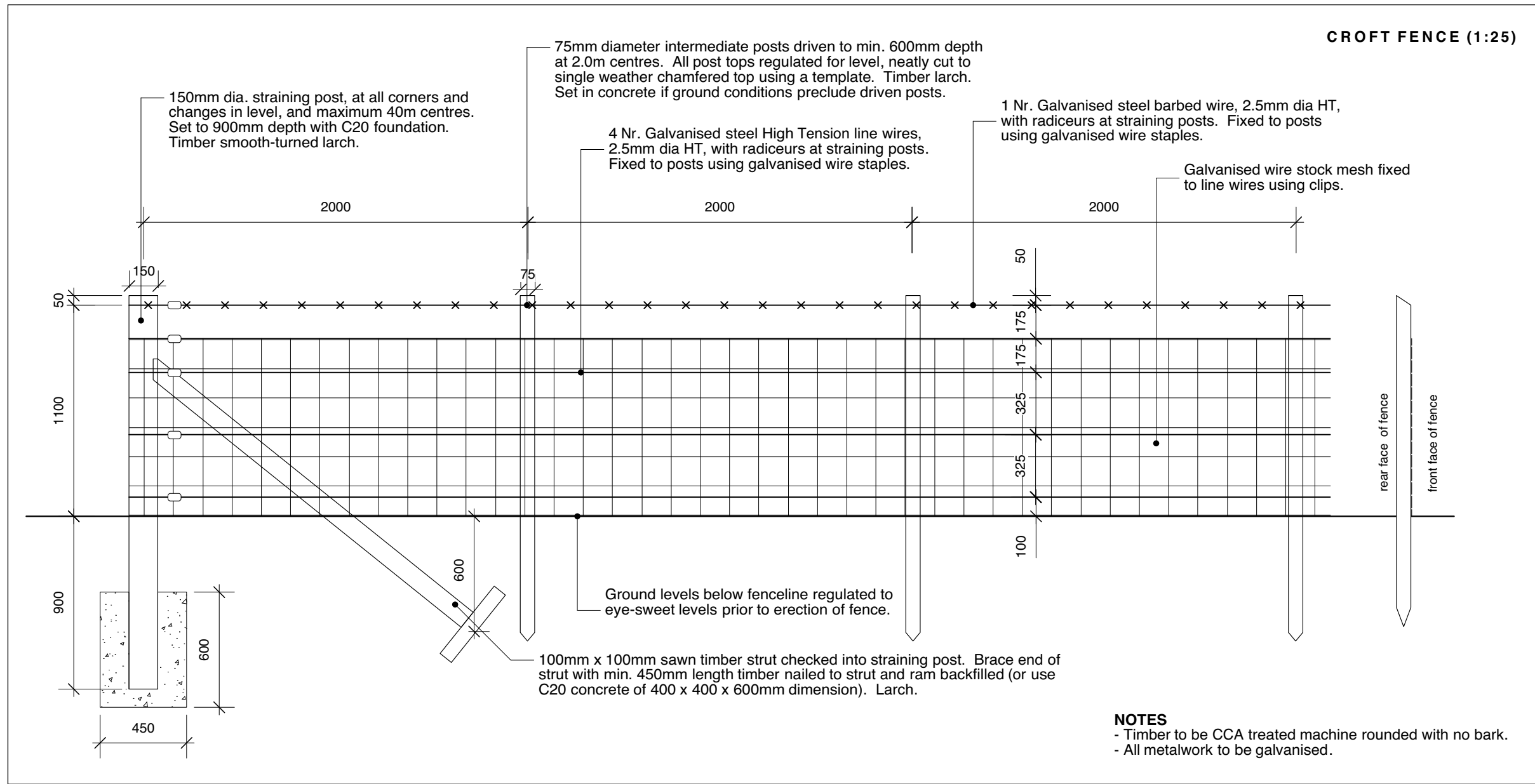


- KEY**
- Existing native woodland
  - Existing strand line vegetation
  - Existing trees
  - Track / path surface
  - Engineered rock armour on seaward slope of flood embankment
  - Strand reinstatement zone, existing natural vegetation and substrate protected (refer to Construction Environmental Management Plan)
  - Shingle vegetation along embankment
  - Coastal meadow
  - Amenity grass verges and games areas
  - Pasture grassland
  - Native woodland planting
  - Native riparian plug planting
  - Native riparian tree planting
  - Wet meadow
  - Specimen tree planting
  - Coastal garden planting
  - Low maintenance grass & wildflower meadow
  - Shinty field fence (see drawing 2141/02 for detail)
  - Shinty field gate (see drawing 2141/02 for detail)
  - Croft fence (see detail)
  - Tree protection fence (see detail)
  - Timber post and rail fence (see drawing 2141/04 for detail)
  - Proposed extent of embankment
  - Litter / dog waste bin
  - Signpost
  - Reinforced grass mat (see drawing 2141/04 for detail)
  - Play sand pit (see drawing 2141/04 for detail)
- NOTE**  
See drawing 2141/01 for full specification.



REVISION	NOTES	DATE	CHECKED
C	Layout updated following THC comments, THC flood wall and pumping station layby layouts added, drainage layout updated.	16/07/2020	NJB
B	Wildflower meadow/amenity grass areas updated.	14/04/2020	NJB
A	Woodland planting, tree protective fencing and existing trees added	01/04/2020	NJB
-	-	29/10/2019	NJB

**TENDER**

The Highland Council  
Caol and Lochside Flood Protection Scheme

Detailed Landscape Layout 4

SCALE 1:500 @ A1  
DRG NO: 2141 / 05