

CAITHNESS LOCAL PLAN

PROPOSALS MAP

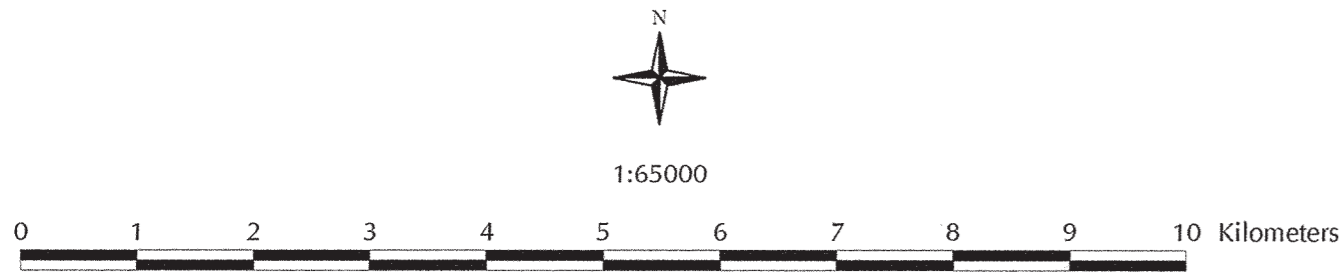
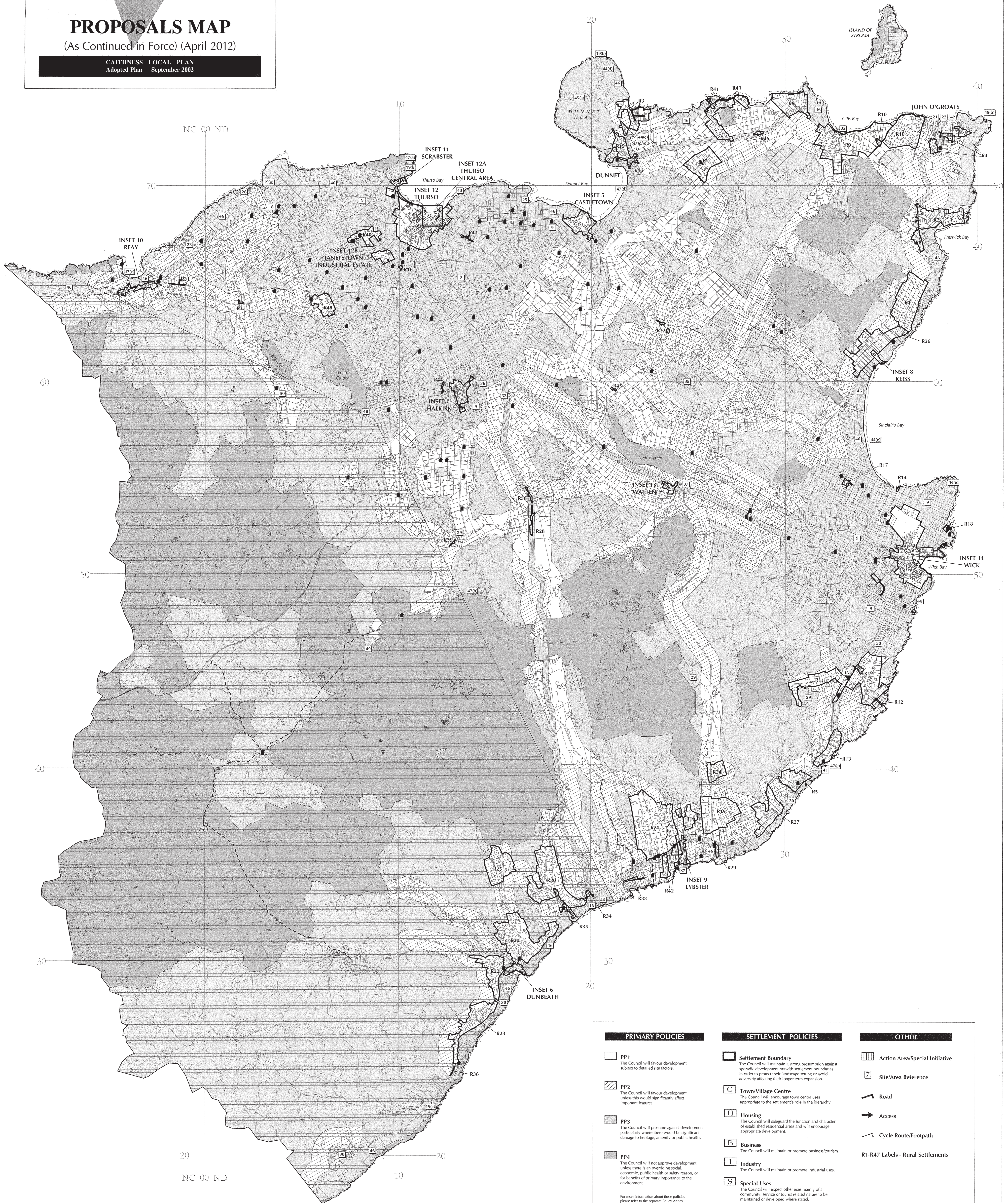
(As Continued in Force) (April 2012)

CAITHNESS LOCAL PLAN
Adopted Plan September 2002

Provisions of Local Plan Map(s) as continued in force

The provisions of the Proposals Map (including any inset contained in or accompanying it and the policies and proposals shown on such inset) and related notations, referencing and explanatory text, only to the extent to which those provisions show, illustrate or explain any provision of the local plan which is continued in force by the Parliamentary Order* and as detailed in the Retention Schedule.

*The Town and Country Planning (Continuation in Force of Local Plans (Highland) (Scotland) Order 2012)



Planning & Development
The Highland Council

PRIMARY POLICIES	SETTLEMENT POLICIES	OTHER
<p>PP1 The Council will favour development subject to detailed site factors.</p> <p>PP2 The Council will favour development unless this would significantly affect important features.</p> <p>PP3 The Council will presume against development particularly where there would be significant damage to heritage, amenity or public health.</p> <p>PP4 The Council will not approve development unless there is an overriding social, economic, public health or safety reason, or for benefits of primary importance to the environment.</p> <p><small>For more information about these policies please refer to the separate Policy Annex.</small></p>	<p>Settlement Boundary The Council will maintain a strong presumption against sporadic development outside settlement boundaries in order to protect their landscape setting or avoid adversely affecting their longer term expansion.</p> <p>C Town/Village Centre The Council will encourage town centre uses appropriate to the settlement's role in the hierarchy.</p> <p>H Housing The Council will safeguard the function and character of established residential areas and will encourage appropriate development.</p> <p>B Business The Council will maintain or promote business/tourism.</p> <p>I Industry The Council will maintain or promote industrial uses.</p> <p>S Special Uses The Council will expect other uses mainly of a community, service or tourist related nature to be maintained or developed where stated.</p> <p>E Expansion The Council will encourage development in accordance with a comprehensive master plan and will presume against piecemeal proposals.</p> <p>A Amenity Areas The Council will safeguard these areas from development not associated with their purpose or function.</p> <p>Fragile Countryside</p> <p>Housing Group</p>	<p>Action Area/Special Initiative</p> <p>Site/Area Reference</p> <p>Road</p> <p>Access</p> <p>Cycle Route/Footpath</p> <p>R1-R47 Labels - Rural Settlements</p>

LOCAL PLANS LEGEND