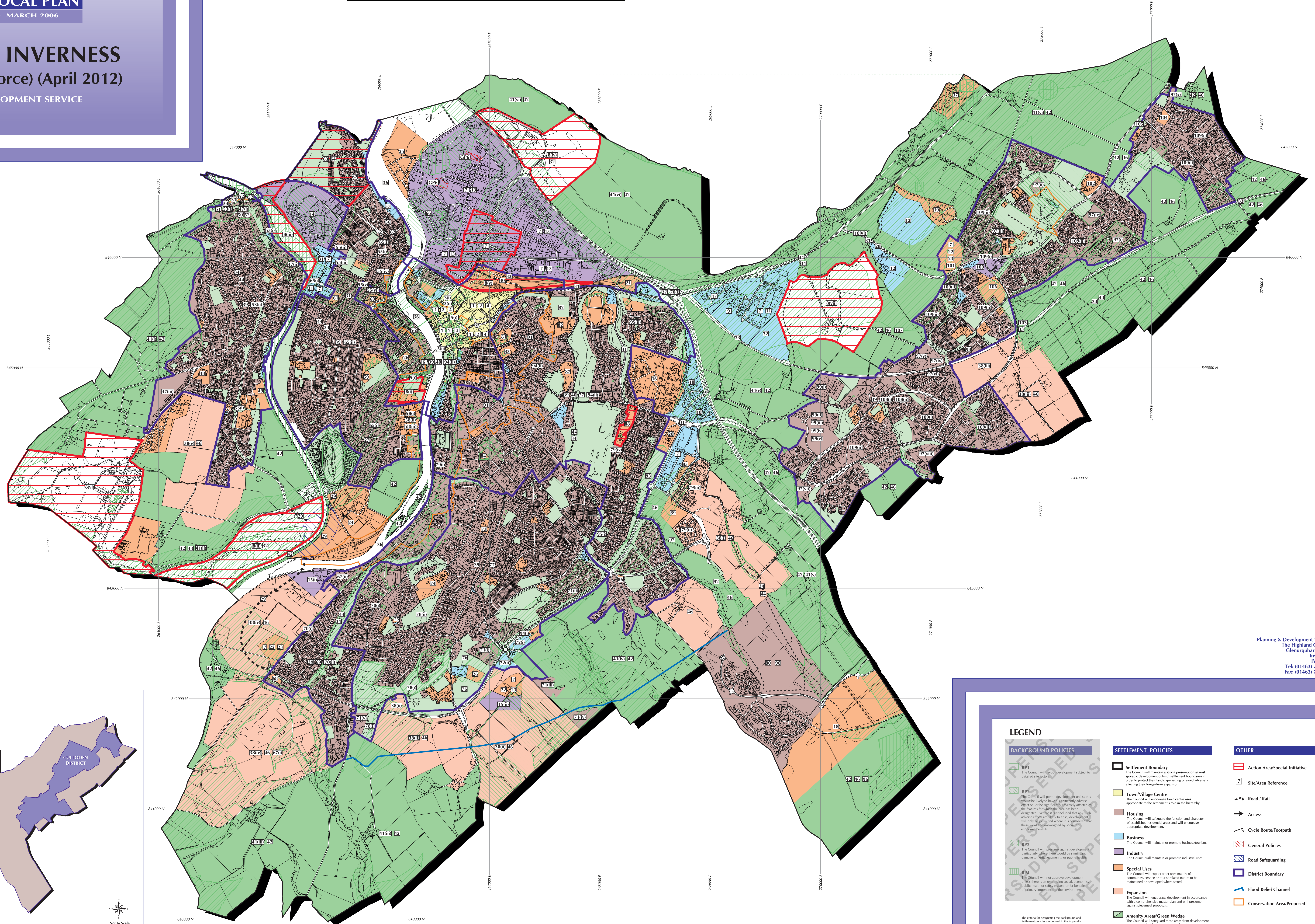
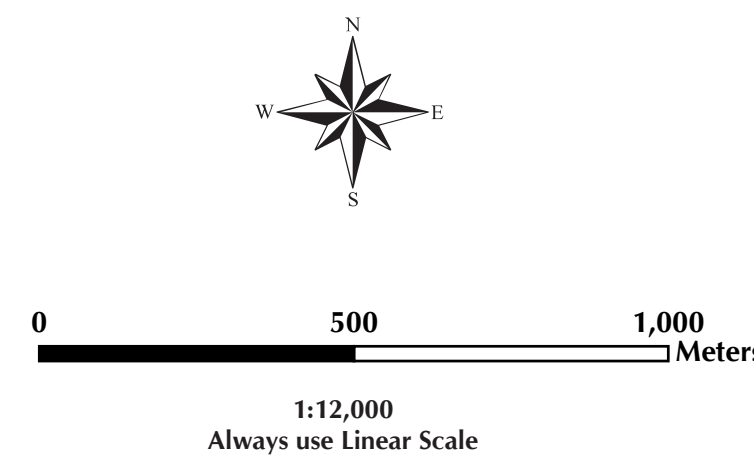
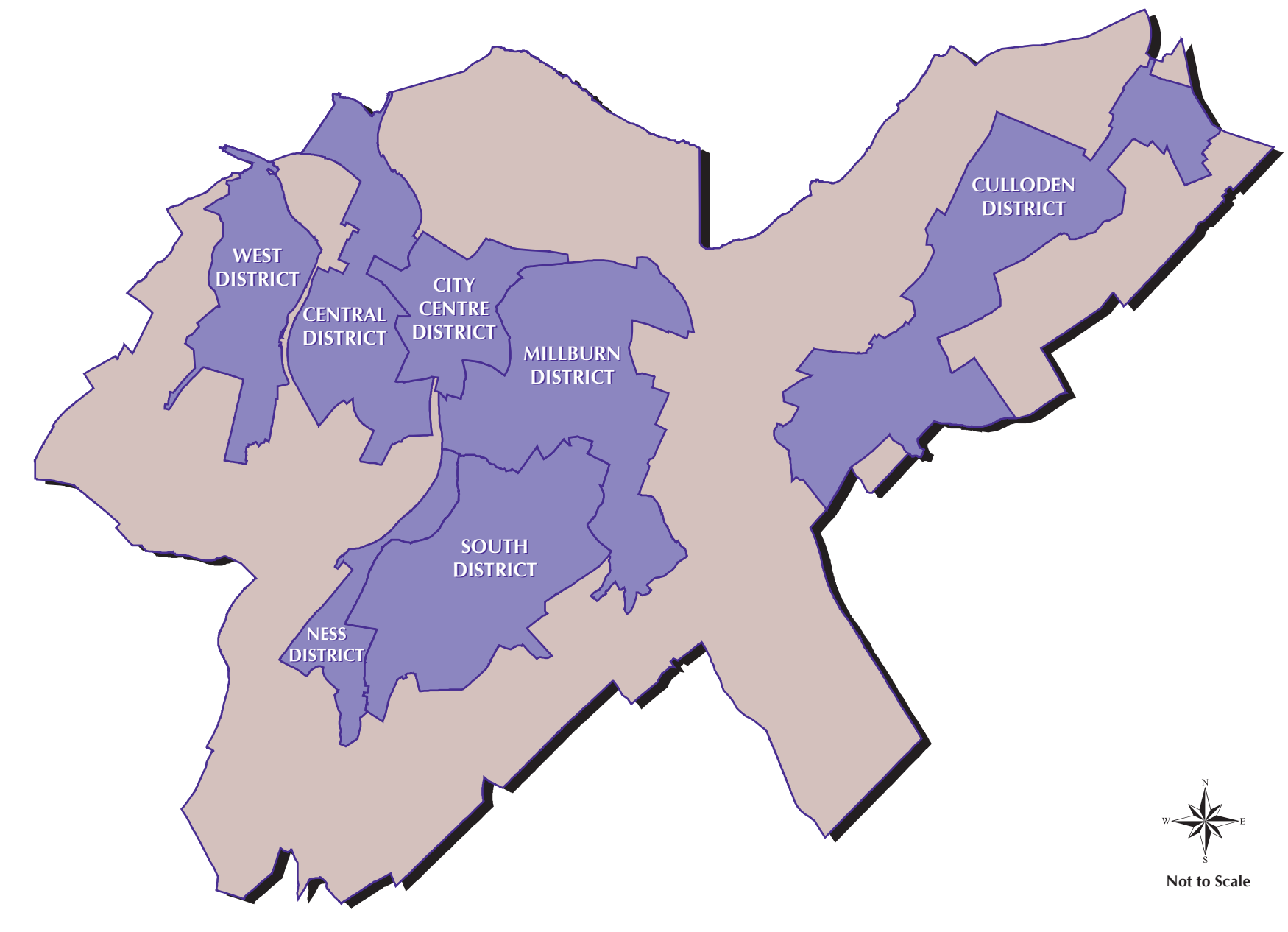


Provisions of Local Plan Map(s) as continued in force
The provisions of the Proposals Map (including any inset contained in or accompanying it and the policies and proposals shown on such inset) and related notations, referencing and explanatory text, only to the extent to which those provisions show, illustrate or explain any provision of the local plan which is continued in force by the Parliamentary Order* and as detailed in the Retention Schedule.
(*The Town and Country Planning (Continuation in force of Local Plans (Highland) (Scotland) Order 2012)



Planning & Development Service
The Highland Council
Glenurquhart Road
Inverness
IV3 5NX
Tel: (01463) 702250
Fax: (01463) 702295

CITY DISTRICTS



LEGEND

- | | | |
|---|---|---|
| <p>BACKGROUND POLICIES</p> <p>BP1
The Council will restrict development subject to detailed site layout.</p> <p>BP2
The Council will permit development unless it would be likely to bring significant adverse effects or be significantly affected by development, unless it is concluded that any such adverse effects are outweighed by the benefits to be gained through the development.</p> <p>BP3
The Council will restrict development particularly where there would be significant damage to the community or public health.</p> <p>BP4
The Council will not approve development where there is an outstanding social, economic, public health or safety issue, or the benefit of a previous regeneration project.</p> | <p>SETTLEMENT POLICIES</p> <p>Settlement Boundary
The Council will maintain a strong presumption against special development outside settlement boundaries in order to protect their landscape setting or avoid adversely affecting their long-term expansion.</p> <p>Town/Village Centre
The Council will encourage town centre uses appropriate to the settlement's role in the hierarchy.</p> <p>Housing
The Council will safeguard the function and character of established residential areas and will encourage appropriate development.</p> <p>Business
The Council will maintain or promote businesses.</p> <p>Industry
The Council will maintain or promote industrial uses.</p> <p>Special Uses
The Council will support other uses, mainly of a community, service or tourist related nature to be maintained or developed where suited.</p> <p>Expansion
The Council will encourage development in accordance with a comprehensive master plan and will promote appropriate proposals.</p> <p>Amenity Areas/Green Wedge
The Council will safeguard these areas from development not associated with their purpose or function.</p> | <p>OTHER</p> <p>Action Area/Special Initiative</p> <p>Site/Area Reference</p> <p>Road / Rail</p> <p>Access</p> <p>Cycle Route/Footpath</p> <p>General Policies</p> <p>Road Safeguarding</p> <p>District Boundary</p> <p>Flood Relief Channel</p> <p>Conservation Area/Proposed</p> |
|---|---|---|

* Crown Copyright. The Highland Council 08003366. All OS base maps are the most up-to-date available to The Highland Council at the time of the production of this Local Plan. The data on other maps which is the product of a process that has been not been derived in advance by The Council. FOOTNOTES: Not all of the policy details listed in the Appendix to the Written Statement are detailed on this Proposals Map sheet.