

57°48'35"N 4°04'02"W



Introduction

Location

Site

Vision

Programme

Introduction

The Highland Council have committed to replacing the current Tain Royal Academy, Craighill Primary school, Knockbreck Primary school and St Duthus School with a new 3-18 learning campus.

Purpose

The purpose of this consultation is to build on the Initial community engagement and stakeholder sessions which provided an understanding of some key issues, local concerns, and the proposals that have been developed to address these matters, including the selection of a new site in the town.

This session is intended to update the community on our progress, confirm a programme for delivery of the new facility, and provide an opportunity for the community stakeholders to feedback ideas, concerns or propose improvements to the approach.

The Educational provision in the The Highland Council is going through a significant transformation with the provision of new schools such as Wick High School, Inverurie Community Campus, Alness Academy, Caol Joint Campus, and the construction of Ness Castle Primary School, Dunvegan Primary School, Tain Community Campus, and the extension/refurbishment of Culloden Academy.

- excellence

ambition

aspiration

inclusion

attain

achieve

participate

supported

social wellbeing

care

lifestyle

innovation

activity
- creativity

connectivity

youth facilities

resource

talents

abilities

skills

community space

heritage

culture

economy

employment

enterprise



Wick High School - Wick



Ness Castle Primary School -



Caol Joint Campus - Fort William



Inverurie Community Campus - Inverurie



Alness Academy - Alness



Ness Castle Primary School - Inverness

Introduction

Location

Site

Vision

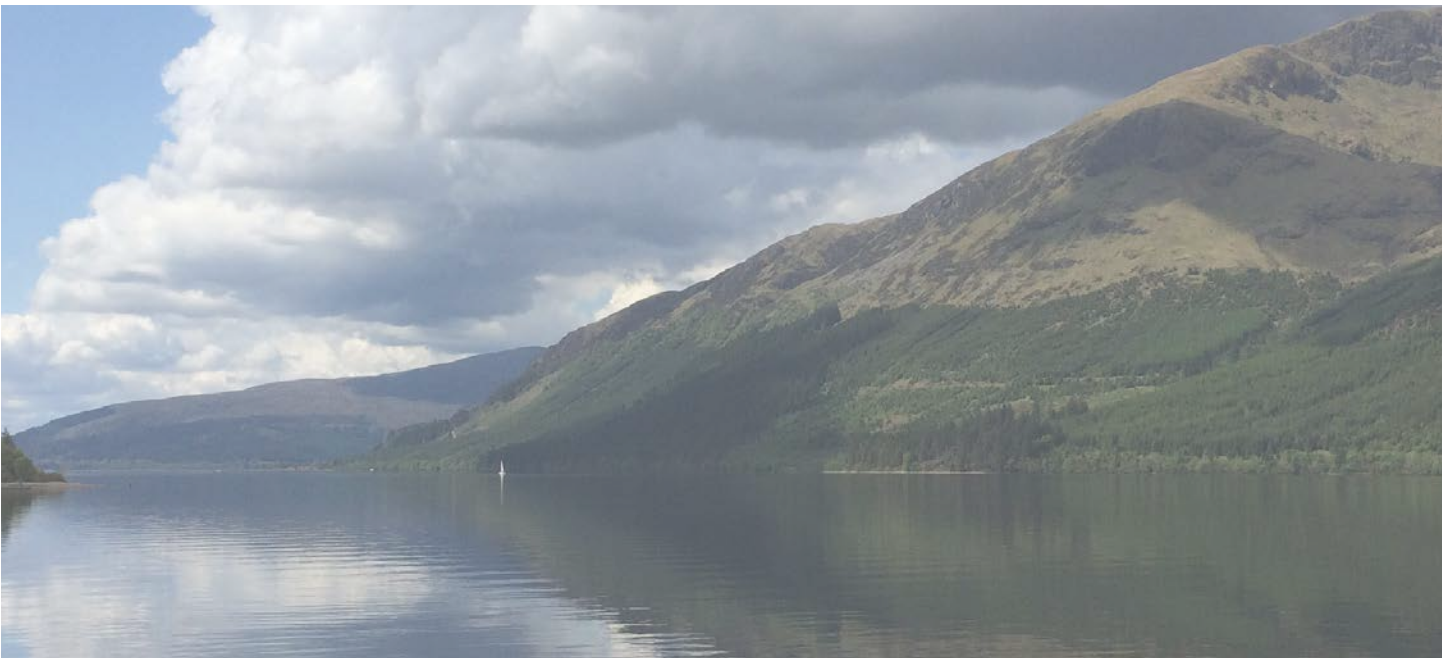
Programme

Location

The royal burgh of Tain is situated within the dramatic natural landscape of the Dornoch Firth. This ancient town a has a long and rich heritage. The selected site is the current ground of Craighill Primary School and is located off Craighill Terrace, adjacent to the A9 bypass. This is a significant site located within the settlement boundary with good walking and cycling links.

The site has residential properties along the north and east boundaries. The existing Craighill Primary School is on the south edge and will be demolished once the campus is complete. The recently completed care home and health centre is located at the entry point to the site, and this blend of use provides an opportunity to create an important destination for Tain and the wider Ross-shire Community.

The topography of the site slopes downhill towards the town centre which provides strong views out to the Dornoch Firth. Minimising the visual impact of the development will be a critical consideration.



We have considered how the town has incrementally and sensitively expanded from its historic core into the surrounding landscape

SECONDARY SCHOOLS

- 1 _ Tain Royal Academy

SCHOOLS/NURSERY

- 1 _ Craighill Primary School
- 2 _ Knockbreck Primary School
- 3 _ Tain Nursery Unit
- 4 _ St Duthus School

COMMUNITY

- 1 _ Duthac House Resource Centre
- 2 _ Tain Library
- 3 _ Tain Community Enterprise Hub
- 4 _ Duthac Centre
- 5 _ TRACC

HISTORY & HERITAGE

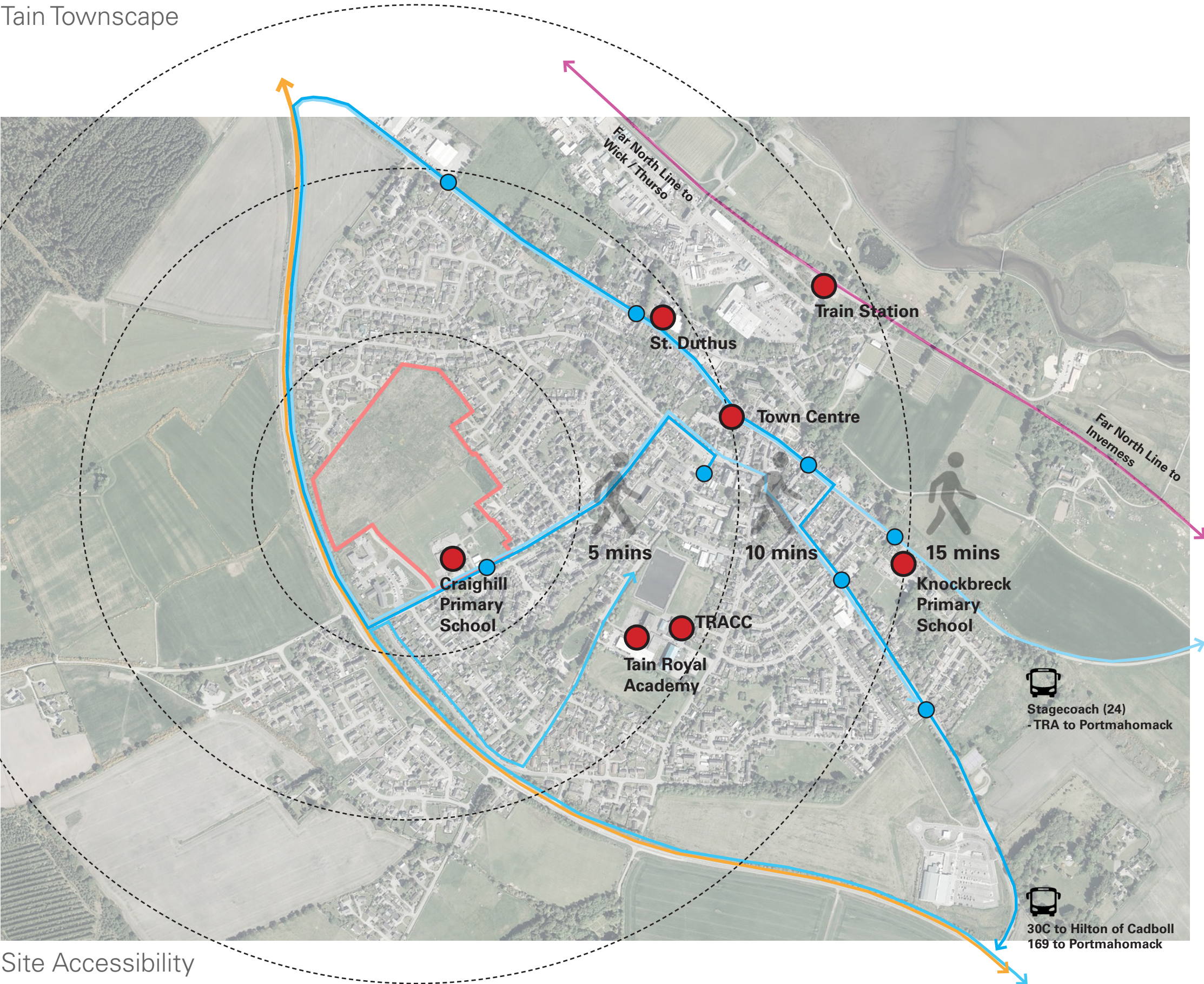
- 1 _ Tain Through Time
- 2 _ Tain Town Centre
- 3 _ The Rose Garden
- 4 _ RAF Tain Museum



Site Context & Environment



Tain Townscape



Site Accessibility

- Key:
- Key place
 - Bus stop
 - ↔ Main road
 - ↔ Railway
 - ↔ Bus route

Programme

Proposed Site Layout

- Introduction
- Location
- Site
- Vision
- Programme

The Learning Space Continuum; Early Years, Primary, Secondary Transitions & Beyond

The innovative spatial planning being introduced across the complete Tain Campus learning environment unites the five learner stages detailed in the Curriculum for Excellence, a key strategy to help ease the transitions for learners, acknowledging that learning happens at different speeds and abilities across the pupil cohort.

Each educational space is tuned to the requirements of the respective user. The spaces contained within each of the integrated schools provide a variety of learning environments which encourage various modes of learning. This educational “identity” is a core concept of the 3-18 campus strategy as it signifies a learning journey that allows students grow and flourish within their community.

A Campus for all

The integration of shared sports facilities, library, and extra-curricular spaces for extended community use incorporates lifelong learning into the fabric of the campus’ programme. This allows the campus to play a central role in the continued development of the wider community, placing health, education, and well-being at the heart of the campus.



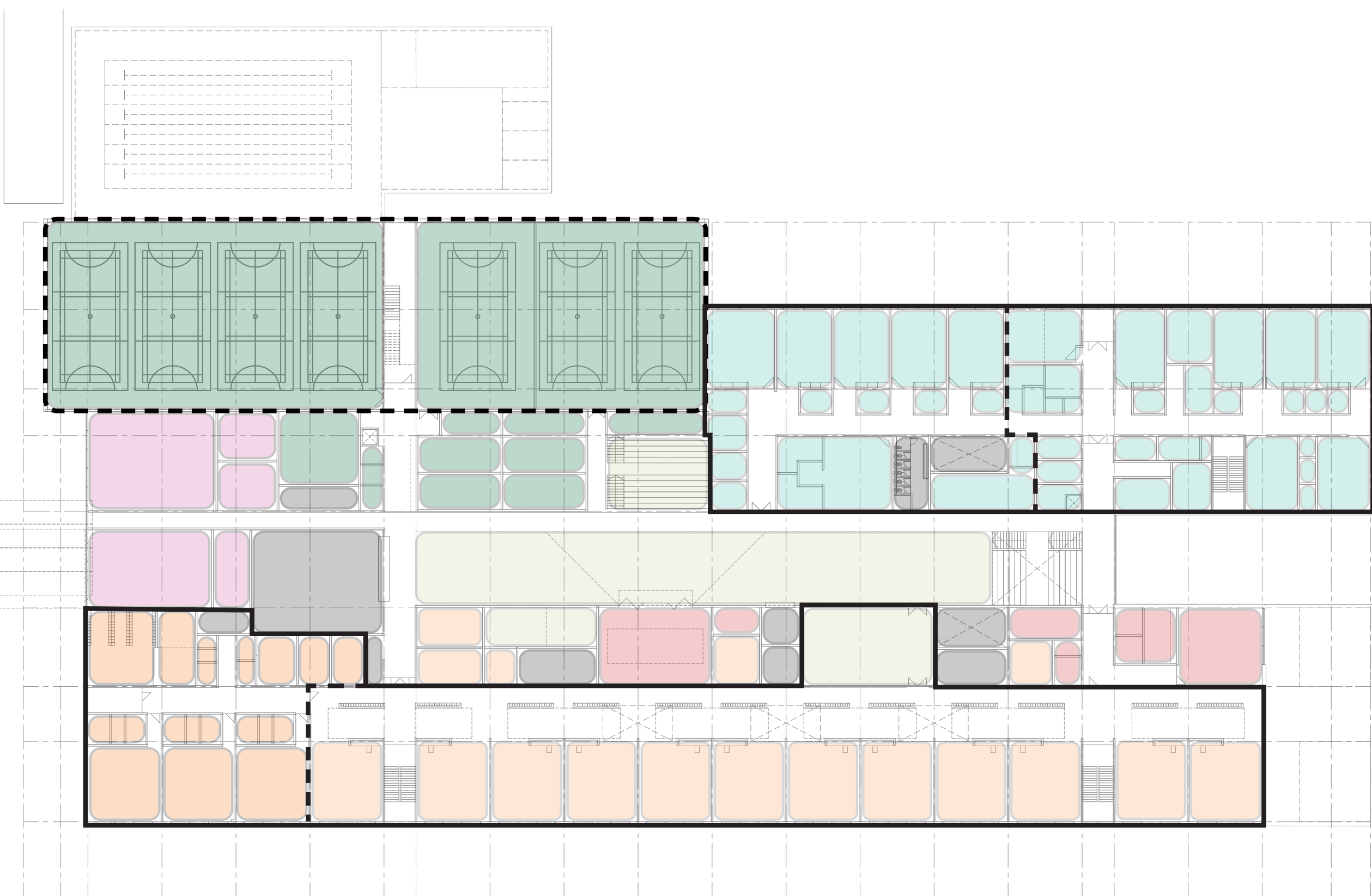
Introduction

Location

Site

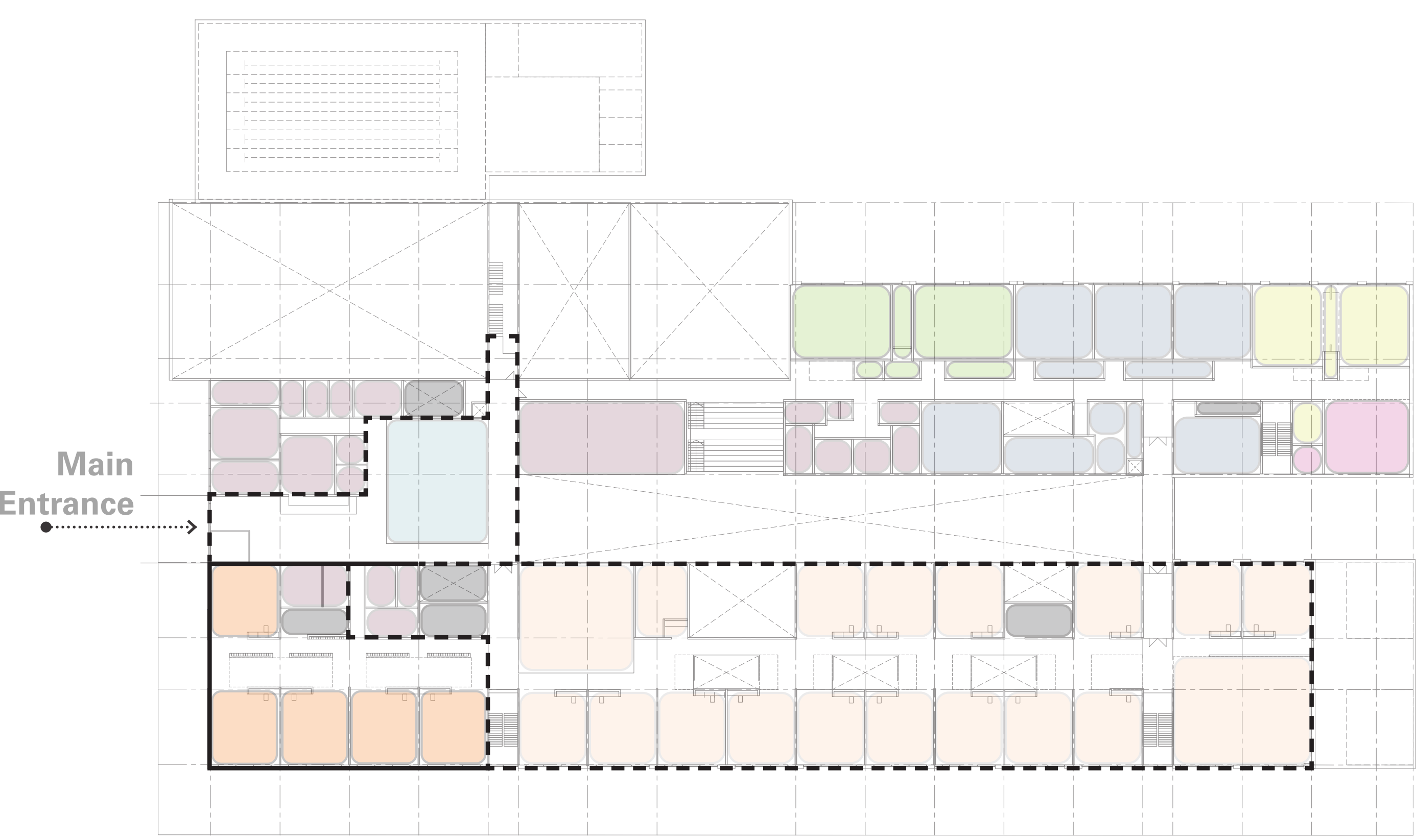
Vision

Programme

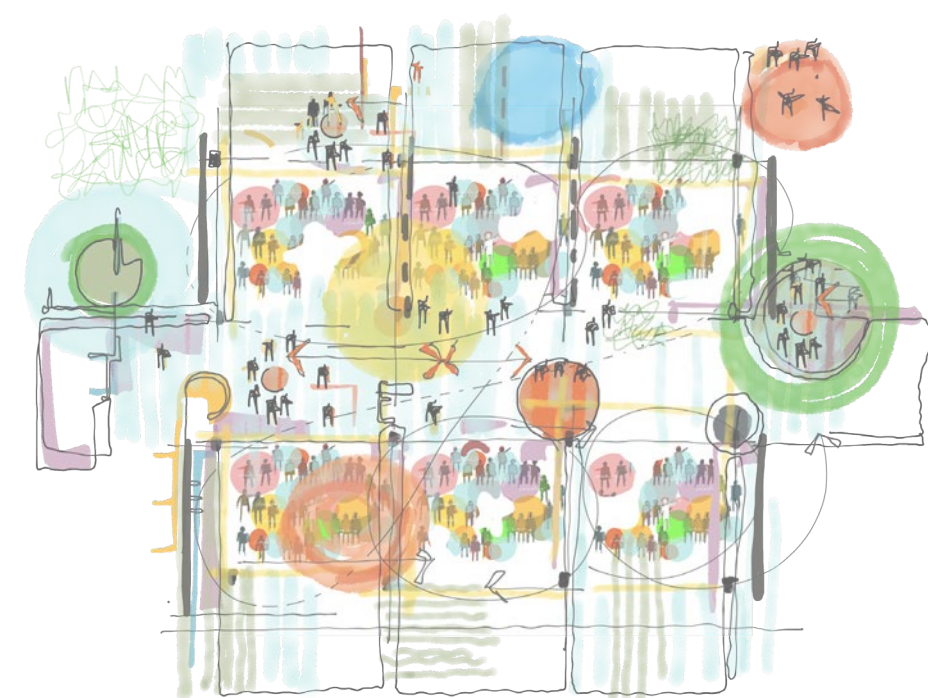


Ground Floor Plan

Key:			
	Dining/communal areas		Primary School
	Shared sports facilities		Secondary School (non-practical)
	Nursery		Science
	Primary School		Art - Ceramics
	ASN/St Duthus		Graphic communication, Eng science, textiles, computing
	Music / Drama		Food Tech
	CDT		Admin/offices
	Support / WCs / Services		Support / WCs / Services
	Library		



First Floor Plan



- Introduction
- Location
- Site
- Vision
- Programme



Concept Visualisation from Craighill Terrace

- Introduction
- Location
- Site
- Vision
- Programme



Concept Visualisation from Proposed Pitches

- Introduction
- Location
- Site
- Vision
- Programme

Project Timeframe

