



Caol & Lochyside Flood Protection Scheme



Community Liaison Meeting
28th September 2021



Project Manager : Steve Scott BEng CEng MICE



Project Update –

Phase 1 – Phase 2

- Stem Injection of the Japanese Knotweed
- Laying of pumped sewer and overflow along Erracht Dive
- Installation of SUDS Tank below former swing park
- Installation of drainage along Erracht Drive
- Continue with installation of drainage along Kilmallie Road
- Scottish Water works in the vicinity of the Shinty club house



Project Phasing – Erracht Drive Phase 1 (June – September 21)

Erracht Drive - Phase 1 - Site Establishment, clearance and drainage outfalls

RJ McLEOD



Activity	Key	Mitigation
Compound and Site Establishment		Dedicated access points, one way system on Erracht Drive in operation
Service diversions		Signal Controlled single lane working (where required)
Japanese knotweed removal		Works contained within site. Refinement of material on site reducing vehicle required for disposal
Drainage outfall installation		Works contained within site. Use of precast headwall where possible to minimise material deliveries
Site Access Points		Designated access points to control traffic movements. Use of one way system along Erracht Drive
Site Access Route		Access route with site boundary minimising traffic on Erracht Drive

Project Mitigation Measures

- Use of vehicle one way system eastward for site traffic along Erracht Drive shore front to site's compound
- Access to Site compound
- Site construction extends from southern kerb of Erracht Drive for majority of works maintaining unrestricted traffic flow for as much of the project as possible
- Pedestrian access maintained along north footway of Erracht Drive
- Designated crossing points where cycle routes, footways, Great Glen way cross the works with access maintained throughout
- Footway at base of canal and towpath maintained throughout with localised diversions during earth retention works
- Internal site traffic along drainage providing site access and removing traffic from public road
- Dedicated site access points ensuring safe access and egress
- Access maintained to canal parks, club and residential properties.
- Public and businesses kept up to date with liaison groups and notice boards

RJ McLEOD



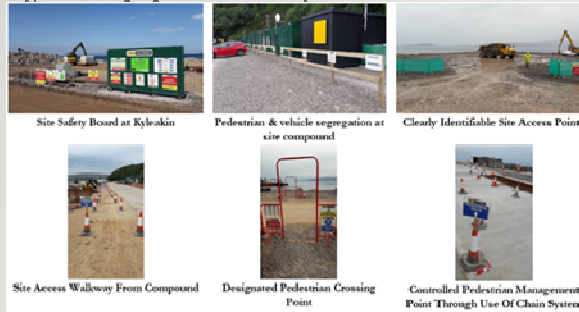
Project Phasing – Erracht Drive Phase 2 (August – October 21)

Erracht Drive - Phase 2 – Drainage Installation and Embankment Construction



Activity	Key	Mitigation
Drainage installation		Works contained within site. Use of just in time deliveries direct to work front to minimise handling and transportation of materials.
Storm cell installation		Works contained within site. Use of just in time deliveries direct to work front to minimise handling and transportation of materials.
Site access route		Access route within site boundary minimising traffic on Erracht Drive

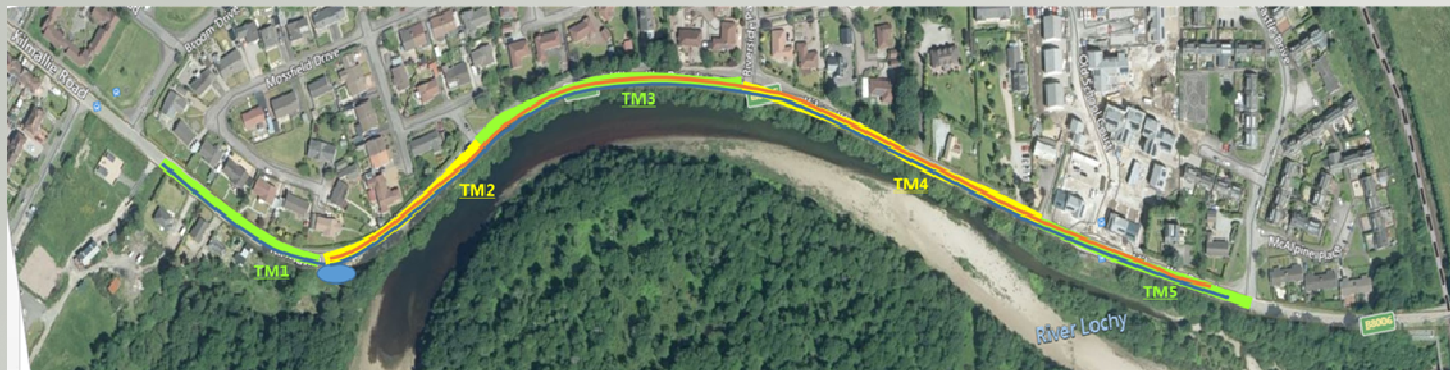
Typical Site Signage To Coordinate Operatives and Public





Project Phasing – Kilmallie Road Phase 2 (August – November 21)

Kilmallie Road - Phase 2 – Pump Station, Drainage Network and Service Diversions



Activity	Key	Mitigation
Pump Station installation		"Off line" construction of pump station minimising public interaction
Drainage network installation		Signal controlled single lane working to install mainline drainage system and tie in gully tails maintain traffic flow along Kilmallie Road.
Service diversions		Water main installed in same trench as drainage network minimising construction/Traffic Management duration.
TMP		Traffic Management Phases for signal controlled single lane working. Deployment of 2 way lights between junctions to minimise the need for 3 way lights and the associated delays between green cycles.

Project Mitigation Measures

- Protection of existing southern kerb line to maintain integrity during construction
- Phased Traffic Management installations using 2 way working to reduce waiting times.
- Liaison with bus operating company to ensure alternative bus stops agreed and provide where necessary maintaining timetable timings
- Localised refinement of drainage network to ensure installation while maintaining required live traffic lane width. Isolated use of convoy working and reduced lane (with Project Manager Consent) for manhole installation where refinement not possible. Consideration of night working in conjunction with resident consultation.





Progress Photos – Drainage Installation Kilmallie Road





Progress Photos – Japanese Knotweed Stem Injection





Progress Photos – Installation of Attenuation Tank





Progress Photos – Installation of Attenuation Tank





Progress Photos – Forming access / bund along the front in preparation for material deliveries





Planned Works for next 4 weeks

- Service diversions
- Installation of 2 SUDS tanks
- Continue with drainage on Kilmallie Road
- Reinstatement of drainage track along Kilmallie Road
- Water and Foul Main Installation
- Installation of headwalls and valves on shore



Community Benefit

- **90% of site personnel reside in the Highlands.**
- **65% of site personnel live within 75-mile radius of the site.**
- **50% of site personnel are locals (live within a 10-mile radius of the site)**
- **Employed 2 local labourers, 1 ganger, 1 machine operator and a local cleaner all living within 2 miles of the site.**
- **Adverts in job centre for labourers and machine operators**
- **Discussions with the local schools on talks, time capsules and training for secondary pupils**
- **Strimming to the front of the community centre**



Any Questions?