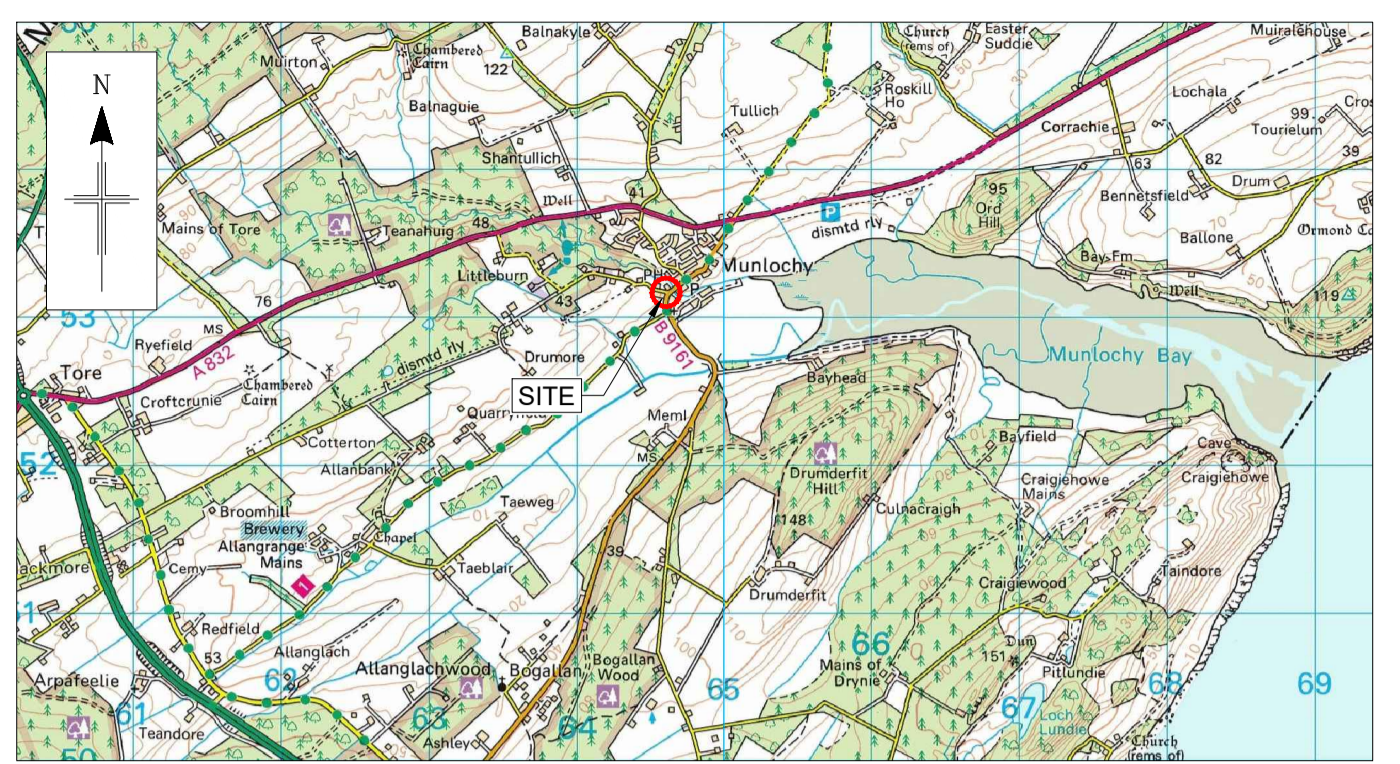
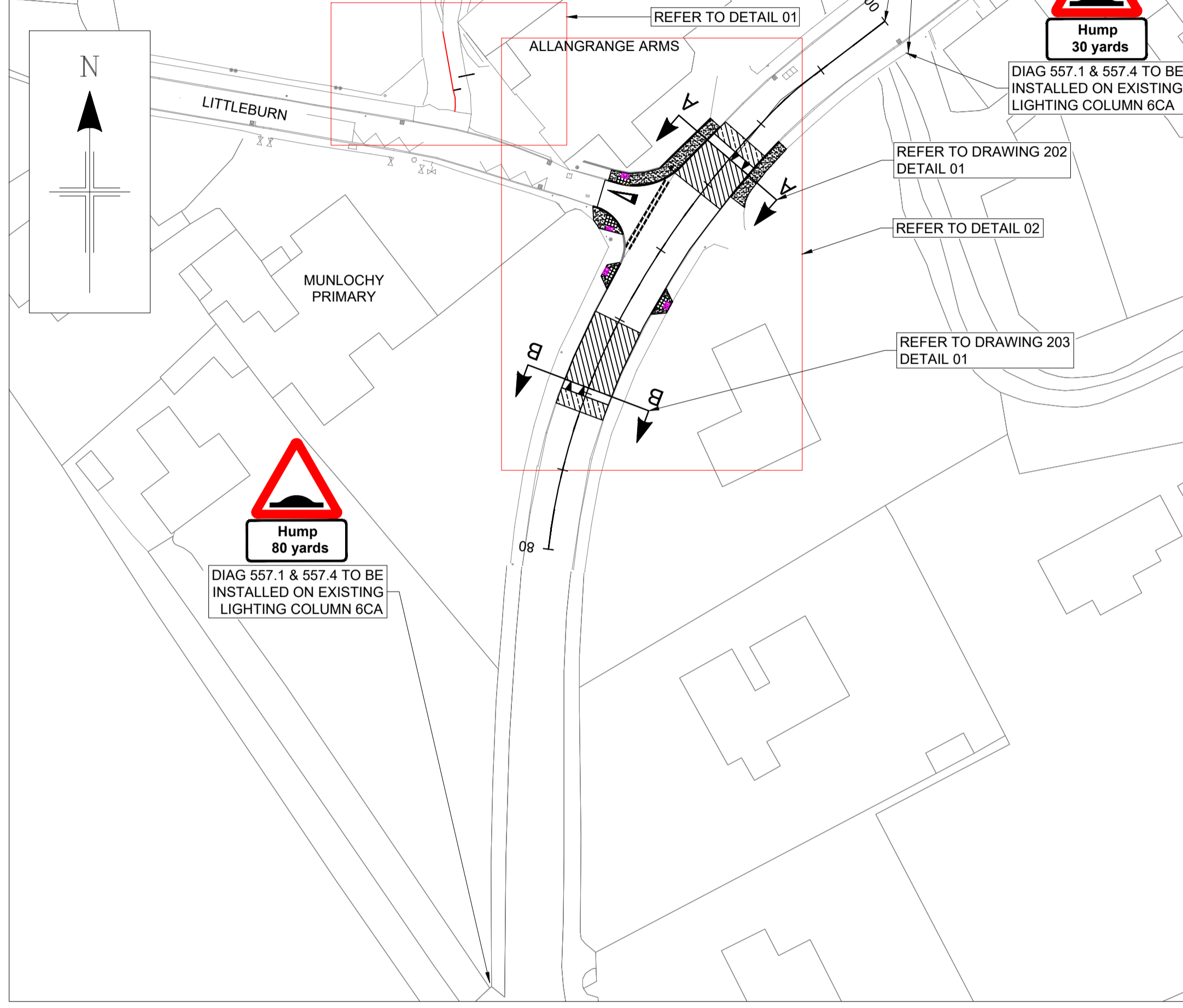


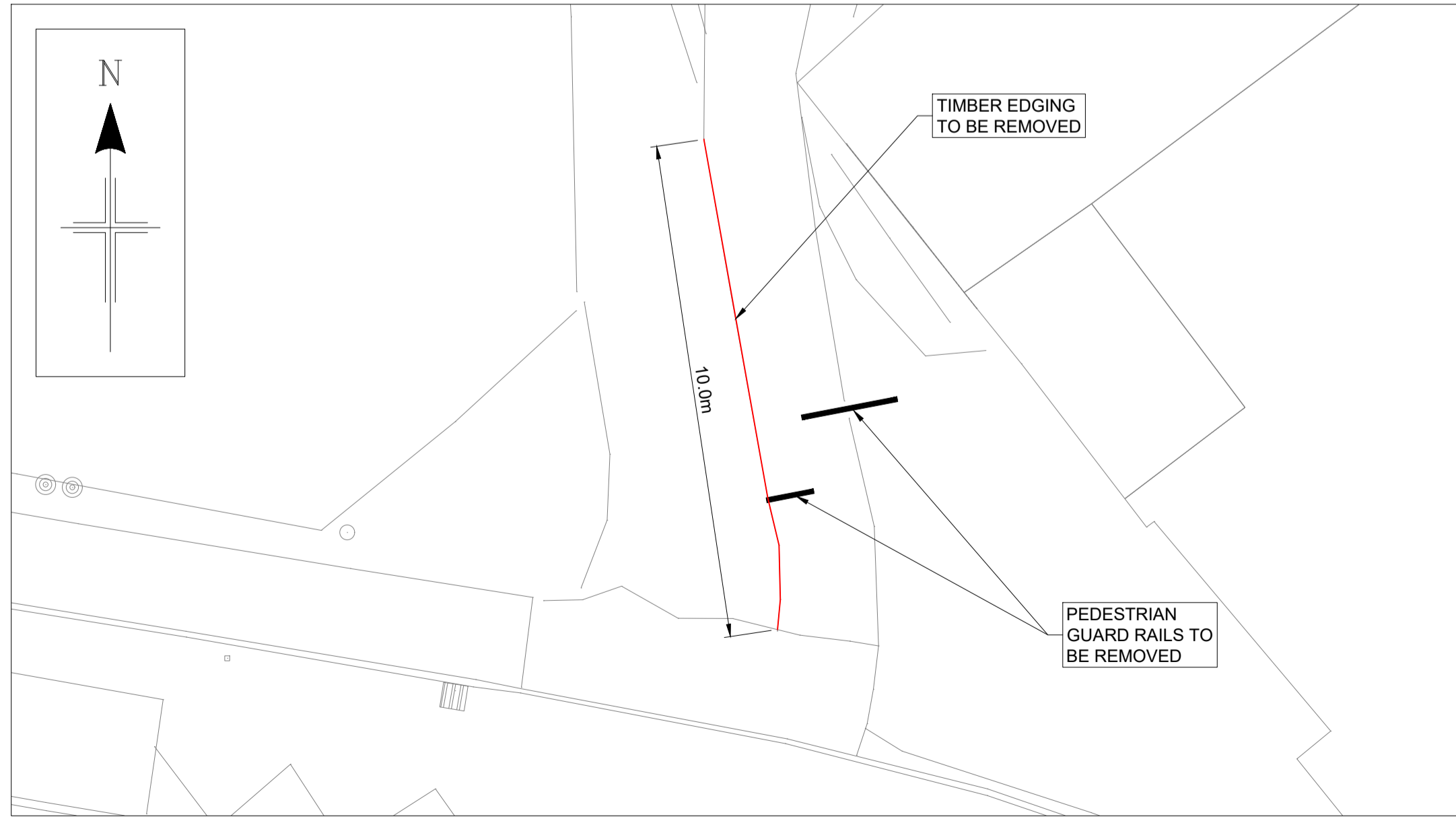
T:\001_Design Team 2\003_Small_Schemes_Projects\HAS3001 Safer Routes To School\2021 - 2022 Schemes\Munloch Primary - YCHMS3007\2 DRAWINGS\CAD\Live\YCHMS3007_LIVE_01.dwg 13/10/2021 User1285



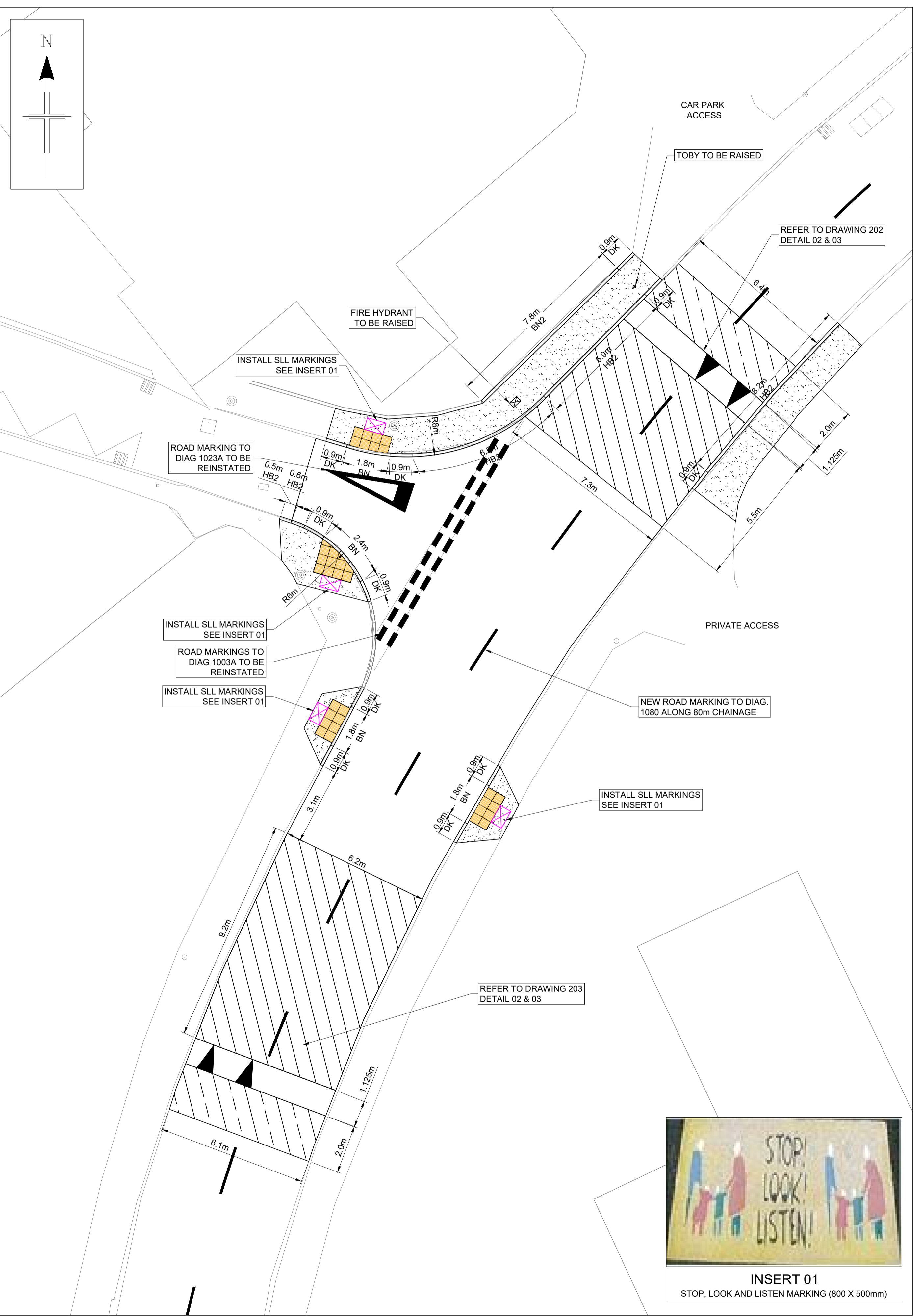
LOCATION PLAN
SCALE 1:50,000



GENERAL LAYOUT
SCALE 1:500



DETAIL 01
SCALE 1:100



DETAIL 02
SCALE 1:100



INSERT 01
STOP, LOOK AND LISTEN MARKING (800 X 500mm)

COPYRIGHT, DESIGNS and PATENTS ACT 1988:
THIS DRAWING MAY NOT BE REPRODUCED, COPIED OR USED IN ANY WAY WITHOUT THE WRITTEN PERMISSION OF THE DIRECTOR OF DEVELOPMENT AND INFRASTRUCTURE.
© THE HIGHLAND COUNCIL
© CROWN COPYRIGHT AND DATABASE RIGHTS 2019 OS 100023369. YOU ARE GRANTED A NON-EXCLUSIVE, ROYALTY FREE, REVOCABLE LICENCE SOLELY TO VIEW THE LICENSED DATA FOR NON-COMMERCIAL PURPOSES FOR THE PERIOD WHICH THE HIGHLAND COUNCIL MAKES IT AVAILABLE. YOU ARE NOT PERMITTED TO COPY, SUB-LICENSE, DISTRIBUTE, SELL OR OTHERWISE MAKE AVAILABLE THE LICENSED DATA TO THIRD PARTIES IN ANY FORM. THIRD PARTY RIGHTS TO ENFORCE THE TERMS OF THIS LICENCE SHALL BE RESERVED TO THE OS.

DO NOT SCALE FROM DRAWING.
ALL DIMENSIONS ARE IN mm UNLESS OTHERWISE STATED.

- NOTES
- LEGEND:
 - PROPOSED 400x400 BLISTER TACTILE PAVING (BUFF)
 - PROPOSED CARRIAGEWAY SURFACE (92m² APPROX)
 - FOOTPATH TO BE RE-GRADED (44m² APPROX)
 - TIE IN TO EXISTING CARRIAGEWAY (25m² APPROX)
 - FOR CONCRETE KERB, FOUNDATION AND CARRIAGEWAY TIE IN DETAILS SEE DRAWING 204 DETAIL 01.
 - FOR NEW SIGN POST AND FOUNDATIONS REFER TO DRAWING 204 DETAIL 02

CONSULTATION ISSUE

01	CONSULTATION ISSUE	CF	BS	13/10/21
REV	REVISION DETAILS	DRAWN BY	CHECK BY	DATE



INFRASTRUCTURE & ENVIRONMENT

PROJECT DESIGN UNIT
COUNCIL BUILDINGS
HIGH STREET
DINGWALL IV15 9QN

PHONE: 01349 868800
E-MAIL: PDU.DT2@highland.gov.uk

PROJECT
CYCLING, WALKING AND SAFER STREETS AT MUNLOCH PRIMARY SCHOOL

TITLE
RAISED TABLE CONSTRUCTION & FOOTPATH IMPROVEMENT

SCALE	AS SHOWN	ORIGINAL SIZE	A1 (594 x 841)
DRAWN	CF	DATE	24/06/21
CHECKED	BS	DATE	13/10/21

PROJECT No. **YCHMS3007**
DRAWING No. **201** REVISION **01**