

Skye and Raasay Future Àm ri Teachd an Eilein Sgitheanaich is Ratharsair Highlights

Preserving our heritage | Investing with our community • A' gleidheadh ar dualchais | A' tasgadh le ar coimhearsnachd

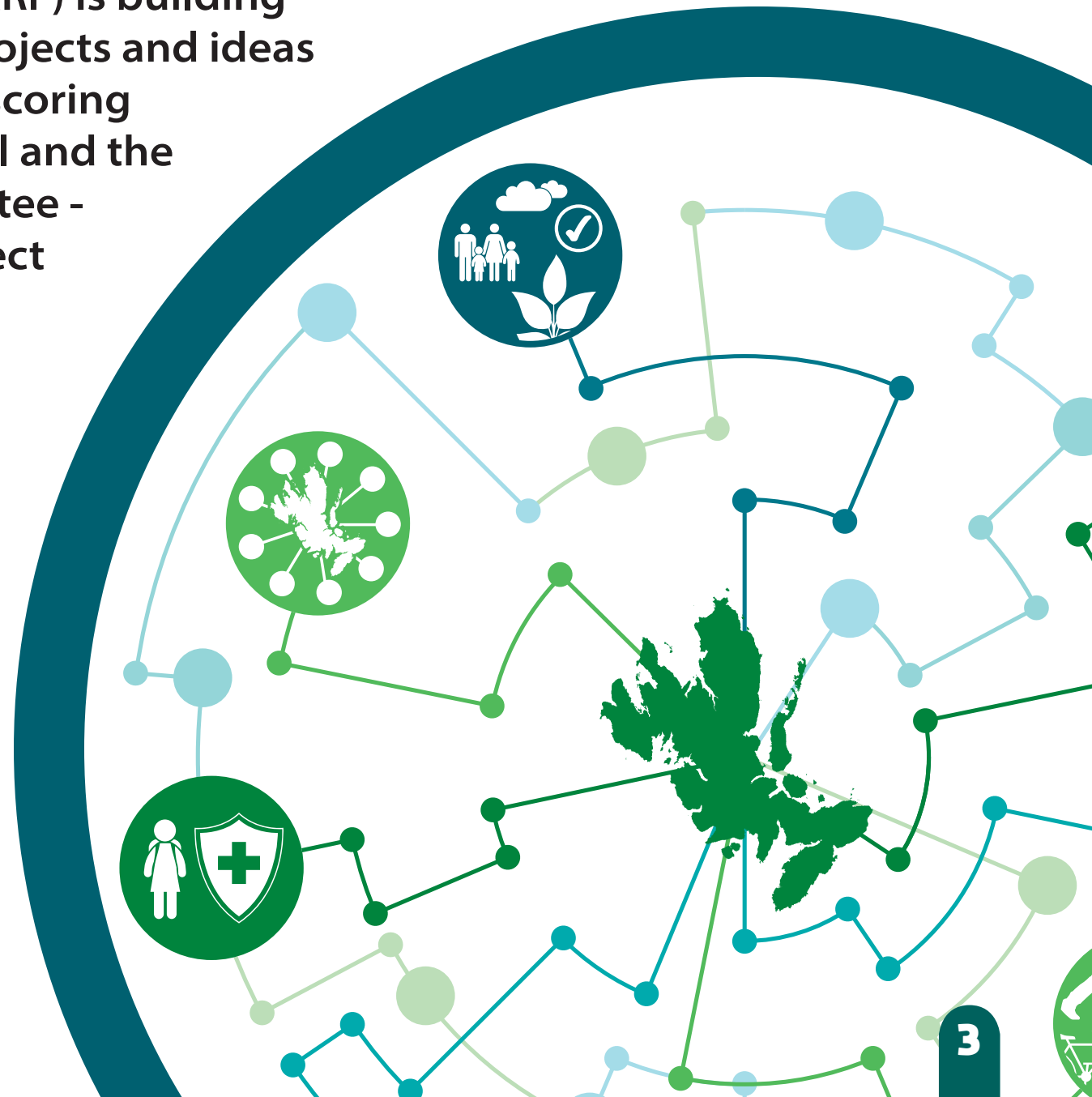
An aerial photograph of a Scottish landscape, likely Skye, featuring a large lake in the center, surrounded by rolling green hills and mountains. The sky is filled with dramatic, colorful clouds, suggesting a sunset or sunrise. The overall scene is serene and majestic.

Skye and Raasay Future
Àm ri Teachd an Eilein Sgitheanaich is Ratharsair

Introduction

Introduction

The Skye and Raasay Future (SARF) is building momentum. The package of projects and ideas - championed by partners and scoring approval from Highland Council and the Isle of Skye and Raasay Committee - is shifting up a gear with a project board now in place to support partners. Some of the work ongoing and completed is highlighted here to coincide with its first meeting.



Skye and Raasay Future
Àm ri Teachd an Eilein Sgitheanaich is Ratharsair

Climate Action and Resilience





Climate Action and Resilience

A net zero emission place where actions have been taken to decarbonise all key sectors including buildings and transport, whilst communities and businesses have been prepared and are ready for the impacts of our changing climate.

In addition to the ongoing studies into carbon reduction through active travel, the Raasay Community Renewables' £1 million Raasay Micro Hydro scheme is well-progressed. Also to be championed, along with so many other project leaders in the area is the Sleat Hydro Community Benefit Society, formed by Sleat Community Trust in 2020. It launched a community share offer raising £235k for the Micro Hydro project at Tormore, which was commissioned in August 2021.



Skye and Raasay Future
Àm ri Teachd an Eilein Sgitheanaich is Ratharsair

Strengthening Communities





Strengthening Communities

A resilient, inclusive and resourceful community network where everyone has access to good quality, affordable housing options, appropriate access to essential services, and where Gaelic and the area's unique culture and identity is celebrated.

Community engagement strongly reflects that access to suitable and affordable housing is the standout issue affecting Skye and Raasay and partners are trying to find solutions. Lochalsh and Skye Housing Association and the Highland Council, working with Scottish Government and Communities Housing Trust along with HIE-supported community-led development organisations have been progressing affordable house building on Skye and Raasay.

Live and recently completed projects, with indicative investment totalling more than £24million, include:

- **Staffin Housing and Business** - six affordable housing and business units.
- **Kyleakin Housing** - 28 housing units.
- **Broadford Housing** - 24 housing units and next-phase infrastructure.
- **Portree Housing** - 45 flats and 15 housing units.

Skye and Raasay Future
Àm ri Teachd an Eilein Sgitheanaich is Ratharsair

Diverse and Green Economy





Diverse and Green Economy

An economy which builds on the area's natural assets, delivers sustainable tourism, and embraces a range of employment opportunities to promote wellbeing, attract investment and supports a thriving population.

Skye and Raasay is one of Scotland's iconic tourism destinations. There has been a rise in visitors bringing economic benefit and has massively raised the global profile of the area. It has also put significant pressure on their infrastructure. Live and recently completed projects, with an indicative investment of £7million include:

- The Old Man of Storr scheme featuring parking, toilets, campervan waste facilities, paths, as well as site management and maintenance.
- The Fairy Glen scheme featuring parking, a turning area, passing places and a path.
- The Skye Habitat restoration project bringing inclusive access, viewpoints, interpretation, promotion and marketing to support sustainable tourism at the Fairy Pools, Old Man of Storr, and Quiraing.
- The Advancing Manufacturing Project, run by West Highland College, will support SME manufacturing and technology development.
- Raasay, Installation of pontoons, with on shore facilities including redesigned toilets, showers and laundry. Camper-van hook-ups, waste and water, EV car charging, refuse and recycling facilities.
- Camper-van waste, toilet and shower facilities to support sustainable tourism at An Crubh and Kilbeg.
- Elgol, new Accessible toilets with adjacent Disability car parking, improved parking at the Community Hall, EV charging point and Camper-van waste and water facilities.

Skye and Raasay Future
Àm ri Teachd an Eilein Sgitheanaich is Ratharsair

Transport Infrastructure



© Willie Urquhart



Transport Infrastructure

An integrated and well-maintained network of high-quality sustainable transport options which support social inclusion, a competitive economy and deliver the wider ambitions for the area.

Action underway to address this priority outcome includes a consultation set to look at active travel around Portree and a study commissioned by the Skye Integrated Transport Group. This new group brings transport stakeholders together to agree future investment priorities for the community. The main goal is carbon reduction - no mean feat when an estimated 70% of visitors come to the area in cars or campervans. In addition, Skye Cycle Network are developing an active travel plan for cyclists, wheelers and walkers, following extensive community engagement.

Current live projects include:

- The Skye Cycle Way project to build a 7-mile active travel path between the Skye Bridge and Broadford.
- The Edinbane Community Companies Lynedale multi-user path, with funding recently secured from the Highland Coastal Community Fund and the Healthy Islands Fund.



Skye and Raasay Future
Àm ri Teachd an Eilein Sgitheanaich is Ratharsair

Health and Education





Health and Education

Modern health, care and education facilities and services appropriate for the area, making it resilient and an attractive place to live.

Engagement event feedback underlines the challenges around healthcare access and the retention and recruitment of health professionals. NHS Highland and the HIE-supported [Skye Lab](#) (along with the work of Lochalsh and Skye Housing Association) are exploring technology to allow people to remain independent in their own homes. These moves will inform studies exploring how everyday health services may be provided in this way although physical access to a wide range of healthcare services may still be necessary.

The new hospital in Broadford is expected to help to meet many of the outcomes identified by local people. Indicative investment to date is £19million. NHS Highland's ongoing work to develop the wider vision for Skye is to be welcomed.

Dunvegan Primary School is part of a masterplan that includes new school, community football pitch, housing, multi-use games area and play areas. The Broadford facility will include a primary school and nursery, along with a community hub comprising community group offices and facilities, the local Highland Council Service Point, and library.

Both schools will provide English and Gaelic medium primary and nursery education, with Dunvegan projected to open in 2024 and Broadford in 2025. These form part of the Scottish Government's new Net Zero Public Sector Building Standard, setting new standards for ultra-low energy demand and have indicative investment of £24million.

Skye and Raasay Future
Àm ri Teachd an Eilein Sgitheanaich is Ratharsair

Funding for the Future

Funding for the Future

Skye and Raasay projects can access the Highland Coastal Communities Fund (HCCF), Place Based Investment Funds, Island Infrastructure Fund, Rural Tourism Infrastructure Fund, SSE Sustainable Development Funding and replacement EU funding as well as other national and local pots of money that become available, for example through organisations like HIE and NatureScot.

The Highland Coastal Communities Fund alone is expected to provide a local annual allocation of funding of around £490k, with decisions on funding awards being taken within the area. Skye and Raasay received an allocation for distribution during 2021 of more than £505k. An open call for projects late in 2020 resulted in 33 expressions of interest within the area requesting a total more than of £1.8million.

Given how over-subscribed the fund was, it was invaluable to have had the outcomes within SARF as a guide to investment priorities. It is expected that again we will look to the outcomes within SARF as a means of prioritising projects for future allocations. There is potential to work with elected Members and the wider community to further refine the priorities for the fund, in alignment with SARF, to ensure that the investment is directed where it can achieve the most impact.

Highland Council's Funding Programme Manager Fiona Cameron

To date, 17 projects have received an award of funding from HCCF and approximately £503k has been committed. All projects are linked to the outcomes of SARF and can show that they are contributing to the delivery of the plan.

Future annual allocations of funding are expected to remain at around the same level for the area.

