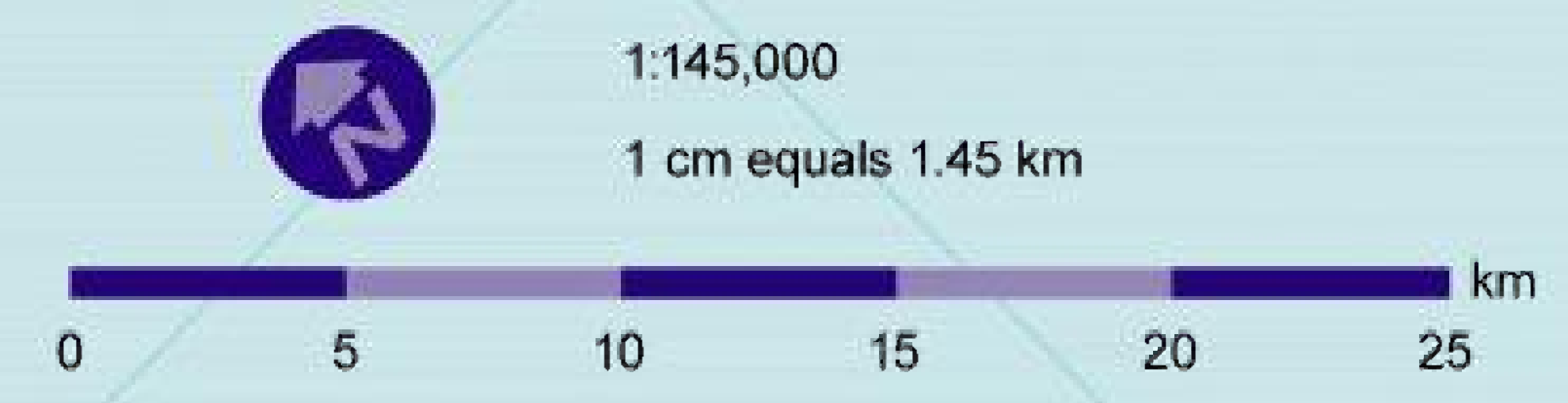
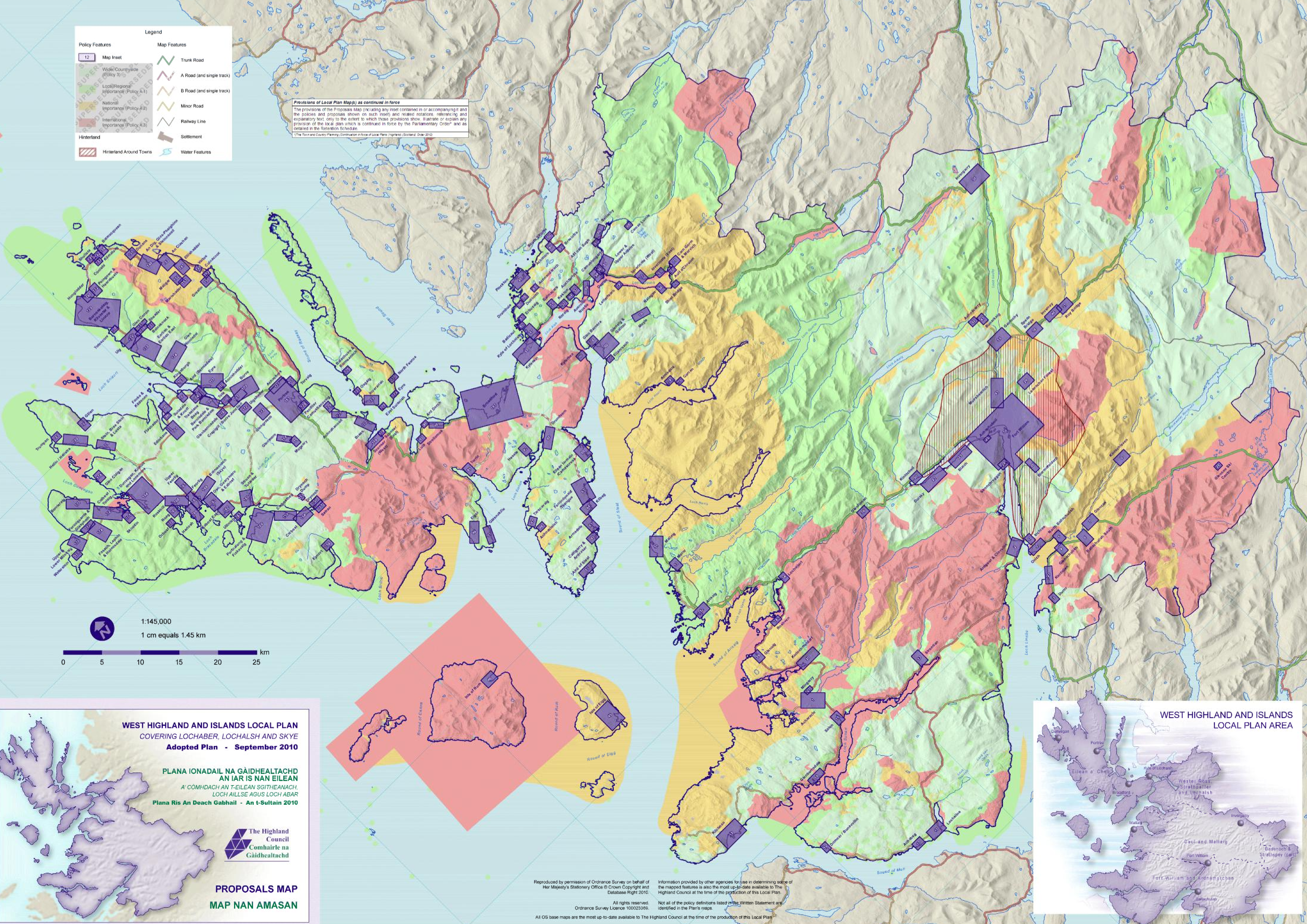


Legend

Policy Features	Map Features
12 Map Inset	Trunk Road
Wide Countryside (Policy 3)	A Road (and single track)
Local/Regional Importance (Policy 4.1)	B Road (and single track)
National Importance (Policy 4.2)	Minor Road
International Importance (Policy 4.3)	Railway Line
Hinterland	Settlement
Hinterland Around Towns	Water Features

Provisions of Local Plan Maps as continued in force
 The provisions of the Proposal Map (including any inset contained in or accompanying it and the policies and proposals shown on such inset) and related notations, referencing and explanatory text, only to the extent to which those provisions show, illustrate or explain any provision of the local plan which is continued in force by the Parliamentary Order and as detailed in the Retention Schedule.
 © The Highland Council Planning Commission in force of Local Plans (Highland) (Scotland) Order 2010



WEST HIGHLAND AND ISLANDS LOCAL PLAN
 COVERING LOCHABER, LOCHALSH AND SKYE
Adopted Plan - September 2010

PLANA IONADAIL NA GÀIDHEALTACHD AN IAR IS NAN EILEAN
 A' COMHDACH AN T-EILEAN SGITHEANACH, LOCH AILLSE AGUS LOCH ABAR
 Plana Ris An Deach Gabhail - An t-Sultain 2010

The Highland Council
 Comhairle na Gàidhealtachd

PROPOSALS MAP
MAP NAN AMASAN



Reproduced by permission of Ordnance Survey on behalf of Her Majesty's Stationery Office © Crown Copyright and Database Right 2010.
 Information provided by other agencies for use in determining scale of the mapped features is also the most up-to-date available to The Highland Council at the time of the production of this Local Plan.
 All rights reserved.
 Ordnance Survey Licence 100023369.
 Not all of the policy definitions listed in the Written Statement are identified in the Plan's maps.
 All OS base maps are the most up-to-date available to The Highland Council at the time of the production of this Local Plan.